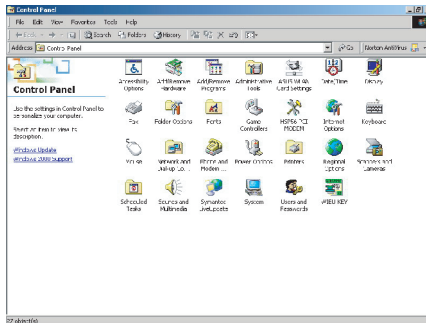


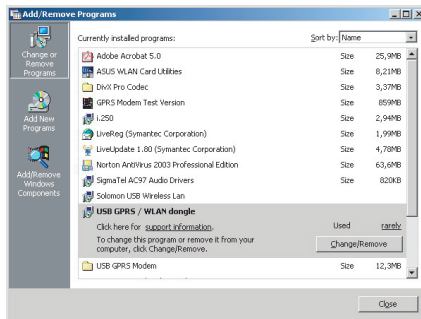
Users Manual

Remove the GPRS modem software

1. Go to add/remove programs in Control.

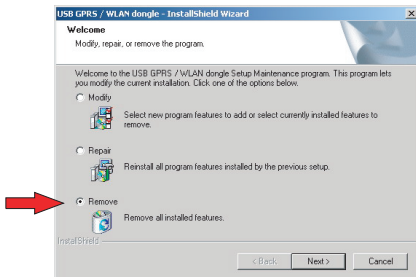


2. Select "USB GPRS/WLAN dongle" then click on Change/Remove.

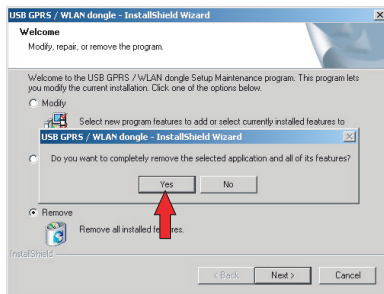


Users Manual

3. You will see the USB GPRS-WLAN dongle installation dialogue box, select "Remove", then click "Next".

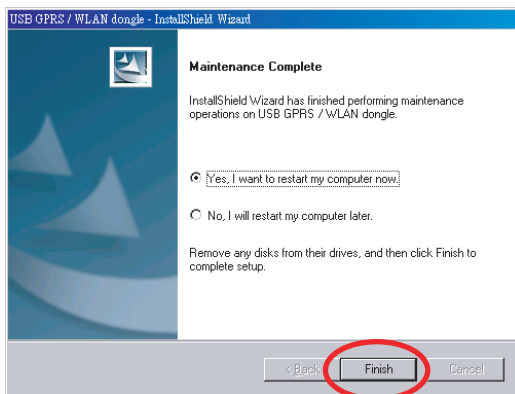


4. A popup window shows "Do you wish to remove the program and its components"? Click on Yes, and then the software starts to remove the program.



Users Manual

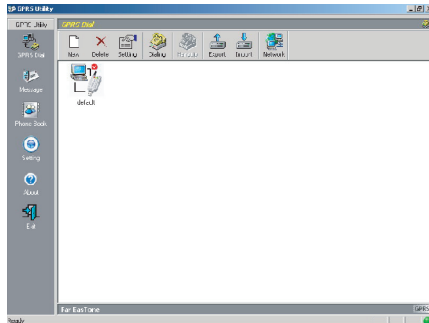
5. When the program is removed, a dialogue box will show up to indicate it has completed, then click on Finish to close the dialog box.



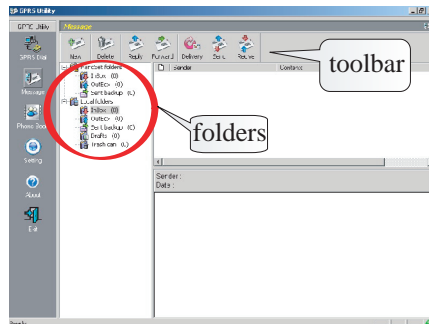
SMS Management

■ Send and Receive SMS

- 1. Click "Message" icon and the SMS functions will be initiated.



- 2. The SMS user interface.



- Folders including: SIM card folders and Local folders; SIM card folders indicate the contents stored on the SIM card and the Local folders indicate the contents stored on the local PC.

SMS Management

New SMS

1. Click on "New" in the toolbox or right mouse click on the empty folder content select "New", the Message Editor window will pop out.

