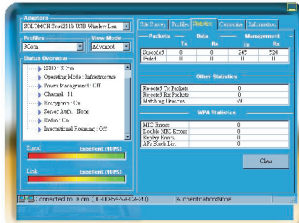
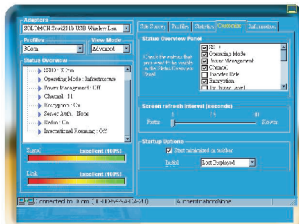


Users Manual

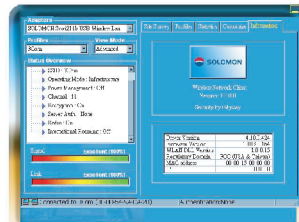
Statistics : to show the current connection and packets status, click on "Clear" you can clear to start anew



Customize : to check the entries that you want to be visible in the Status Overview Panel



Information : to view the software version, Regulatory Domain and the MAC address etc



Appendix :

1. Operation Mode: The usage modes include Ad-Hoc mode and Infrastructure mode (please refer to WLAN network mode)
2. Channel: ISM band, the numbers of channels vary in different countries, channel allocations are controlled by AP in the Infrastructure mode, Ad-Hoc and be set as manual control
3. SSID: All WLAN Dongles need to use the same SSID in the Ad-Hoc mode, all WLAN Dongles will adapted to AP's SSID in the Infrastructure mode
4. Tx Rate: You may manually set the Tx rate to be 1, 2, 5, 11 Mbps or Auto, default is set as Auto
5. International Roaming: Default is set to "Disable"
6. Radio: You may manually turn the radio on/off
7. Encryption: Two types of encryptions are provided WEP and TKIP, you may also choose in between 64 or 128 bit encryption codes, and you can set to none

Users Manual

8. Preamble: The preamble type can be set as long, short or auto for the PLCP within the physical layer, default is **Auto**
9. Tx Power Level: You may adjust the transmission power level from 5~100 dBm
10. Fragmentation Threshold: You may choose to divide frame in Tx, it is more efficient if the frame is divided because only the failed frames need to be re-transmitted. It is suitable to be used when the S/N ratio is low
11. RTS/CTS Threshold: When the frame is smaller than the RTS/CTS Threshold, when WLAN dongle will transmit the frame is idled channels, if not, WLAN dongle will transmit the frame with the standard 802.11b protocol, this will include RTS and CTS frames and headers, it will take longer time to identify each other's signaling, but it can avoid collisions
12. Power Saving: This can be set into power save mode, default is **off**

Frequently asked Q & A



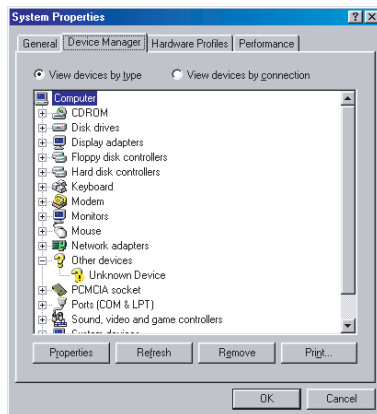
Users Manual

■ GPRS modem installation failure:

1. Please make sure you have properly installed the USB GPRS software, if not, please re-install the software.
2. Did you plug the GPRS modem into the computer USB port prior to the USB GPRS software installation? If yes, please remove the device from Windows Hardware Manager.

<Windows 98 SE>

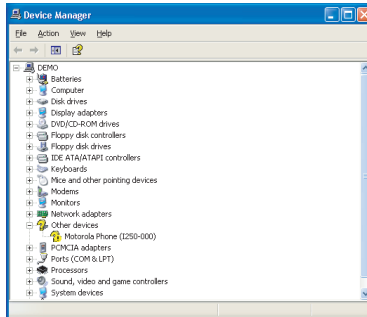
Remove the Device with the question mark manually in the Hardware Manager.



Users Manual

<Windows ME/XP/2000>

Remove the Device with the question mark manually from Other Devices in the Windows Hardware Manager



Once you have removed all the devices from the Windows Hardware Manager, please remove the GPRS modem from your computer first, and then re-install the program.

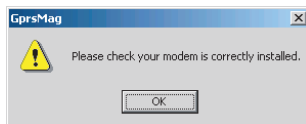
Note: The Solomon GPRS Modem is using Motorola GPRS chipset, it is quite all right to see "Motorola Phone (I250-000)" during the installation.

3. If you are using a PCMCIA (or other form) to USB conversion card and the computer failed to detect the GPRS modem, please check the hardware first.
4. Please make sure the GPRS modem is plugged into the USB port completely.

Users Manual

■ Could not open the GPRS manager:

Please make sure your GPRS modem is plugged into the USB port on your computer.



■ Could not establish GPRS connection:

1. Please make sure your network has granted your GPRS service
2. Have you entered all the parameters during the software installation?
3. Please check ② light is lit on your GPRS modem, if not, you are probably in a RF dead zone or in an area your GPRS roaming service is not permitted. If ① light is lit on your GPRS modem, your SIM card is probably inserted incorrectly or damaged.

■ GPRS connection is slow and unstable:

1. Please disconnect from the network and re-connect, the network might re-assign you to a better sector in the network.
2. If the connection is still slow it indicates the base-stations near you is having heavy traffic, try to re-connect later or move to a different location (move to a nearby window might help).

■ Interference during connection

1. Try to stay away from microwave stove, stereo, or TV, which might interfere the RF connection.
2. If you are in a spot where there is a fading dip, you might have poor communication; make use of the USB extender cord in the package to adjust a better antenna angle will definitely help!

■ Q & A

1. **The speaker on my computer is making strange noise or my computer is functioning improperly?**

Answer: The USB GPRS modem is using the GSM cellular phone network, the maximum transmitting power could reach 2 watts, if your notebook or PC is not properly designed for EMI protection, the speaker and the computer might function improperly, it is not the USB GPRS modem's fault.

2. **I did not move my PC, but get disconnected from the network?**

Answer:

- 1) could be the base-stations near you is having heavy traffic.
- 2) the network is dynamically re-allocating all the mobile handsets in its sectors, if your GPRS modem is being allocated to a sector which has lower signal you might get disconnected, just re-connect.

3. Is the RF power of the GPRS modem hazardous to human body?

Answer: The GPRS modem is plugged into your computer, not like the mobile phone is attached to one's head, the influence of the GPRS modem on human body is much lighter than mobile phones.

4. Can I use the GPRS modem to dial a speech phone call?

Answer: Negative, it is data only, however, the Internet application of speech can be achieved.

5. May I use the GPRS modem abroad?

Answer: Yes, but please make sure your GPRS roaming is activated on your SIM card and the overseas country is offering the adequate frequencies for your GPRS modem.

6. Am I logging on to the real Internet or just WAP?

Answer: Yes, the real Internet, not WAP.

7. I have SIM pin on my SIM card; do I need to remove the SIM pin first?

Answer: Yes, please remove the SIM pin first.

8. Why my GPRS modem gets hot when in use?

Answer: The GPRS modem transmit 2 watts in 900 MHz band and 1 watt in 1800 MHz band when in full power, it is normal to be a little hot when it communicates with the Internet.