

SEGM-520 USB EDGE Modem



■ Copyright

This USB EDGE Modem Installation Guide is copyright by Solomon Tech. Corp. with all rights reserved. No part of this document may be reproduced in any form without the prior written approval of Solomon Tech. Corp.

■ Disclaimer

The information in this document is accurate at time of release. However, as Solomon Tech. Corp. is committed to continued research and development activities, these specifications may change from time to time. Contact your local representative should you require clarification on information contained in this document or to request of copy of the latest version of this document.





■ **Be aware of aviation safety**

Please do not use this device on the civilian airplanes, the aviation instruments on board maybe interfered by the RF power leads to failure.



■ **Be aware of your surroundings**

Please do not use this device when your are close to gas stations, fuels silos, chemical factories, or any explosive materials.



■ **Be aware of traffic safety**

Please do not use this device when you are driving a vehicle.



■ **Be aware of the RF power.**

Keep your body at least 2 inches (5 cm) away from the antenna when in use.



■ **Be aware of the medical device.**

The transmitted RF power might interfere some of the medical devices such as a heart pacer, please do not use this device in hospitals.



Warnings



The device is a delicate instrument, please handle with care, it is prohibited to fall on the ground or bent to avoid damage to the device.



There are no parts to be maintained by the user, if the device seemed to be not functioning, please have it serviced by the qualified technician at the qualified service center. To avoid damage to the device, please do not take this device apart by yourself; the warranty is void once the seal is broken.



Do not let children play with this device.



When the device is not in use, please unplugged from the notebook PC and keep it at a cold dry place.



Do not take the antenna off the device to avoid poor reception.



Do not touch the antenna when in use to avoid poor reception.



The device is not waterproof, please do not use it in rain or damp surroundings.

■ Cautions when in use

- The device might suffer interference and cause poor reception when it close to a massive metal structure such as a metal furniture or inside of a steel structure of a building.
- To avoid RF interference, try not to use the device when it is close to a microwave oven or a TV.
- Please do not use the device when it has passed through dramatic temperature variations, the moisture inside the device may cause short circuits once powered on. Please wait until the moisture dries out before power on.
- The device is powered by the USB port from the computer, to avoid poor communication quality please do not power on the device when the computer is in low battery.
- It is always a nice tip to cut your large file into small packets for transmission.

■ SAR related issues

- This device is not a cellular phone. However, please use it accordingly to the instructions.



1. Introduction

Package contents	07
------------------------	----

2. Installation & setting procedures

System requirements	08
Software & hardware requirements	08
Network system requirements	08
SIM card installation	09
Insert the SIM card	09
Remove the SIM card	10
Install the EDGE modem to the PC	11
Software installation	12
Install the EDGE modem driver software	13
Exit	18



Index

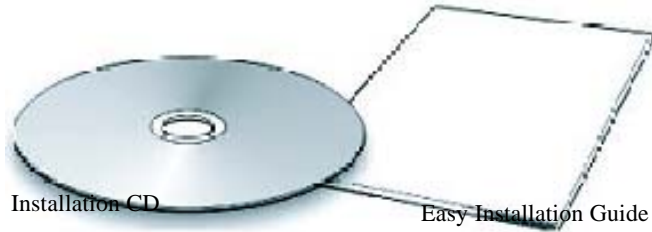
Install EDGE modem	19
Setup EDGE modem	22
To use EDEG modem	26
SMS Management	28
Phonebook Management	38
Setting	42
About	45
Q & A.....	46
FCC Information	50



Users Manual

Package contents.

Please check below items in the package, if there is any shortage or damage, please contact your local representative immediately.



Items	Quantity
SEGM-520 EDGE Modem	1
USB Extender Cord	1
Installation CD	1
Easy Installation Guide	1

■ System requirements

Please make sure your computer's hardware and software meet the following requirements, please refer to your computer's users manual or contact your local representative for more information.

Software & hardware requirements

- A valid SIM card (EDGE service is granted)
- An USB port or a PCMCIA to USB converter card is available.
- IBM compatible Pentium II 400 MHz (or above) notebook or
PC with a minimum of 64 MB RAM

■ Network system requirements

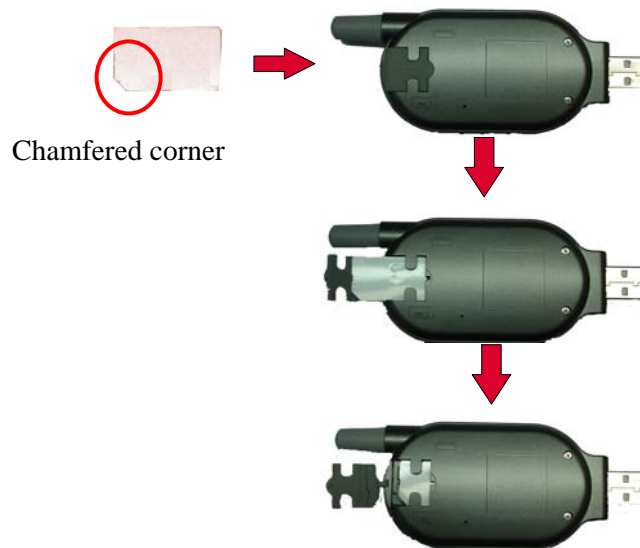
Please make sure your local GSM network provides EDGE service and please apply the EDGE service from network.



SIM card installation

Insert SIM card

Insert SIM card into SIM card compartment with the chamfered corner to click into the housing.



Note:

1. Please make sure the chamfered corner on SIM card matches with the latch on the housing.
2. If SIM card is inserted into the housing with incorrectly direction, the SIM card won't be able to click into the chamfered latch.

Remove SIM card

Gently pressing the chamfered latch on the housing, SIM card will be ejected from the housing automatically.

Gently pressing the chamfered latch



SIM card will be ejected



Install EDGE modem on PC

- **Please follow the following procedures to install driver software.**
- USB EDGE Installation Wizard will automatically determine the type of operating system on your computer and choose the proper driver for the EDEG modem.
- When the software installation is completed, plug EDGE modem into USB port on your computer; the operation system will automatically identify EDGE modem.

Note: Do not plug the EDGE modem into computer prior to the software installation.

1. Put installation disc into the CDROM on your computer.
2. USB EDGE Installation Wizard shows up on the screen automatically.



EDGE modem Installation on PC

Software Installation

Install the EDGE modem driver software

1. Click on "Driver Installation".

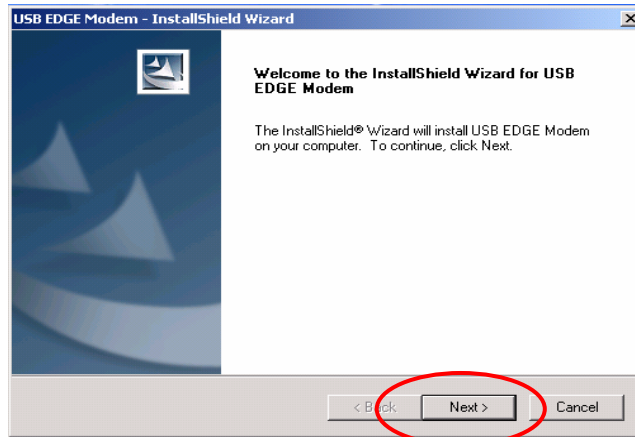


2. Install the software window. Click on left button.

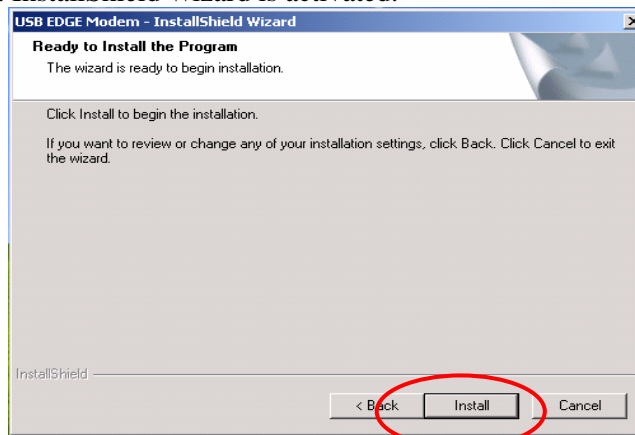
- 1.Driver Installation
- 2.Users Manual
- 3.About Solomon
- 4.Exit



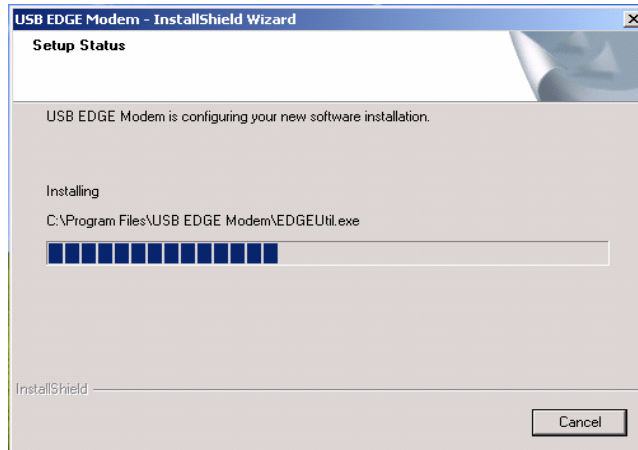
3. "Driver Installation".



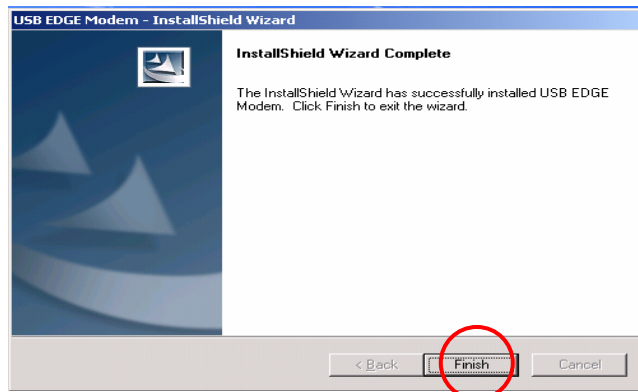
4. InstallShield Wizard is activated.



5. "USB EDGE Modem –InstallShield Wizard"



6. "InstallShield Wizard Complete" shows up, then click on "Finish".



Users Manual

7. You may find an "EDGE Manager" icon on desktop.



Users Manual



Users Manual

1." shows up users manual"



**Please install legal Adobe Acrobat Reader
before opening users manual**



SOLOMON

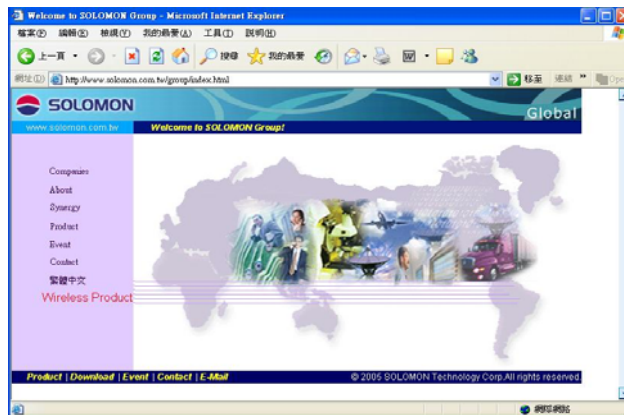
16

Users Manual

About Solomon



1. The browser will connect you to the Solomon WEB site (www.solomon.com.tw) if you are connected to Internet.



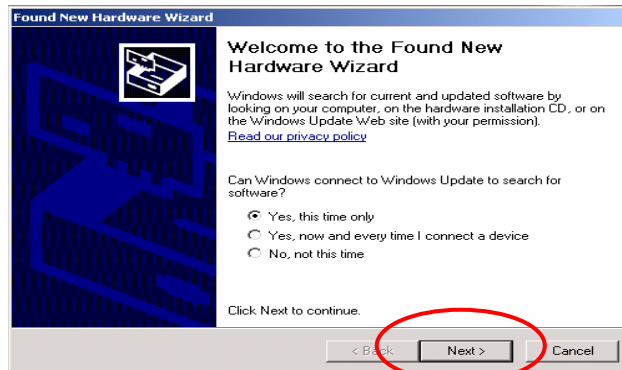
Exit

1. Click on "Exit" to complete the installation

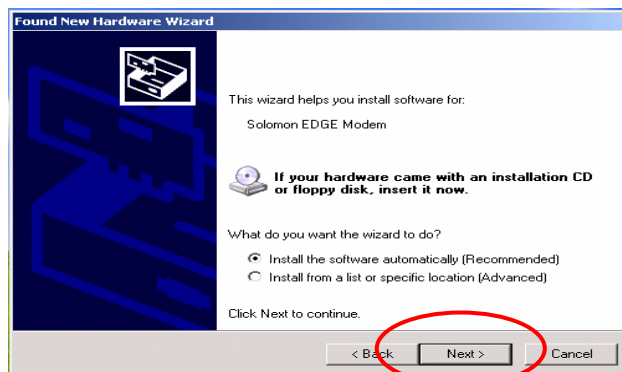


EDGE modem installation

1. Plug the EDGE modem into the USB port on your notebook or PC.
2. The "Found New Hardware Wizard" will appear on the screen, then click "Next".

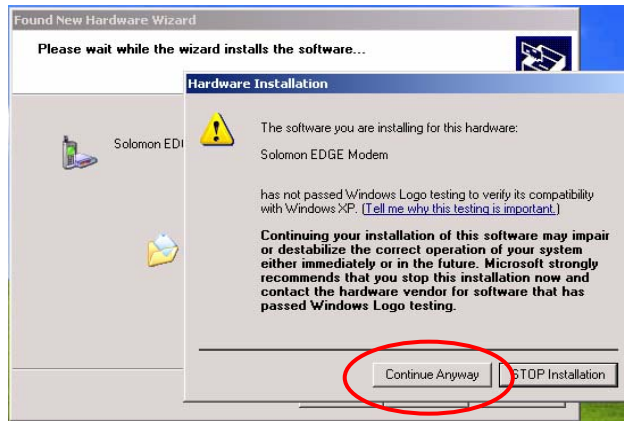


3. "Install the software automatically" then click "Next".

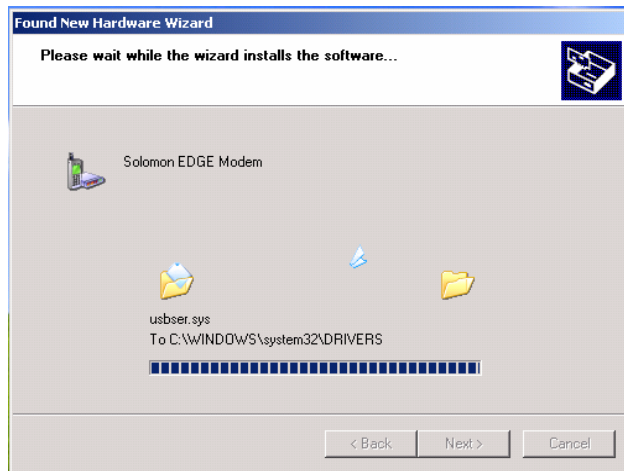


Users Manual

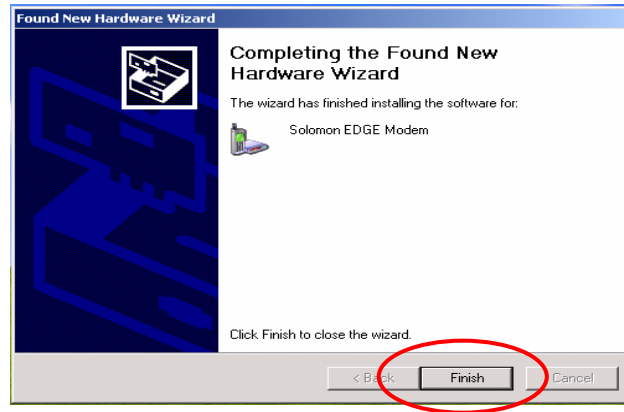
4. Solomon EDGE modem is found, click "Continue Anyway".



5. Software for the Solomon EDGE modem is now installing.



6. Click "Finish" to finish installation.

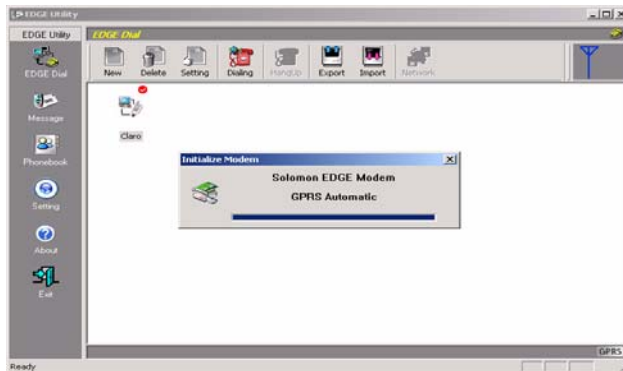


Setup EDGE modem

1. Double click on the "EDGE Manager" icon on your desktop (EDGE modem is already plugged into the USB port on your computer) to start the connection settings.

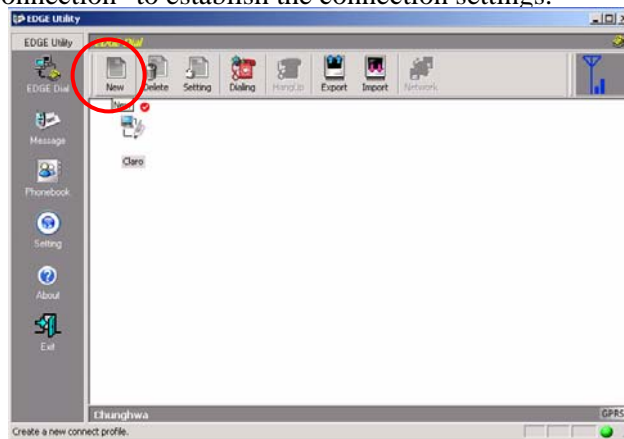


2. "EDGE Utility" will show up.

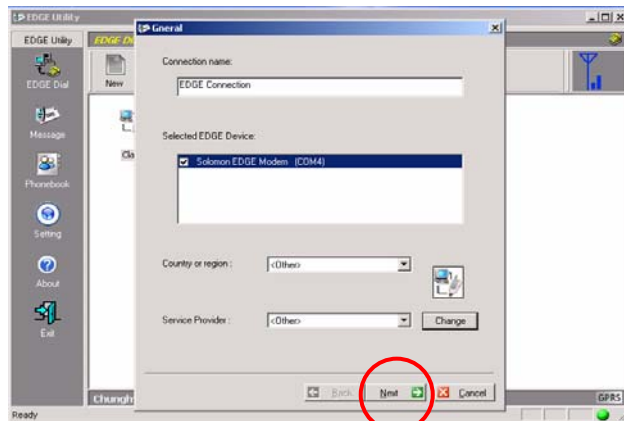


Users Manual

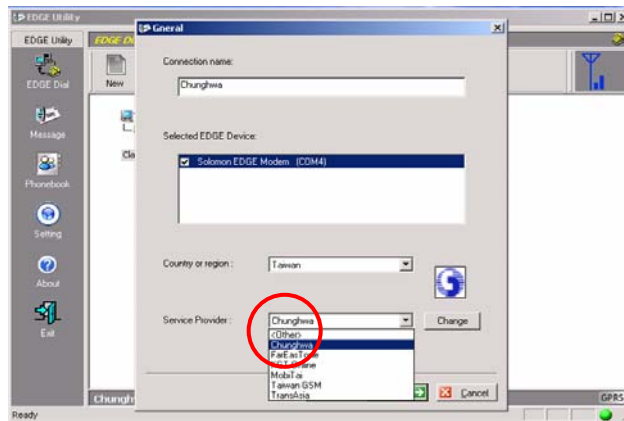
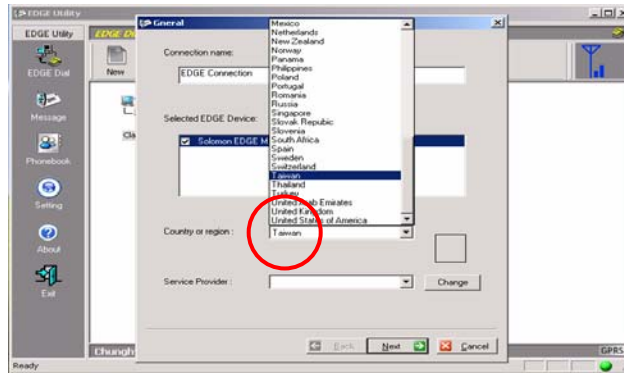
3. Pull down the Connection menu bar and choose "make a new connection" to establish the connection settings.



4. Enter a new connection name as you wish, then click "Next".

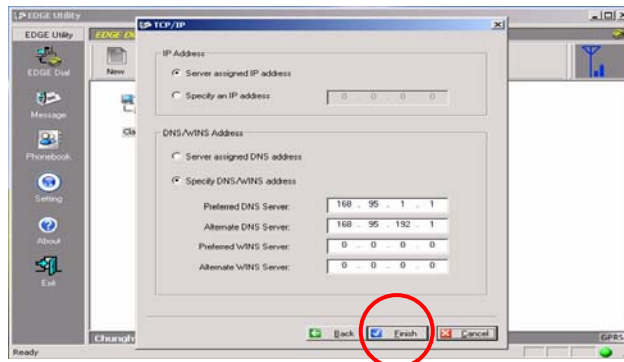


5. Click the right side "Change" options

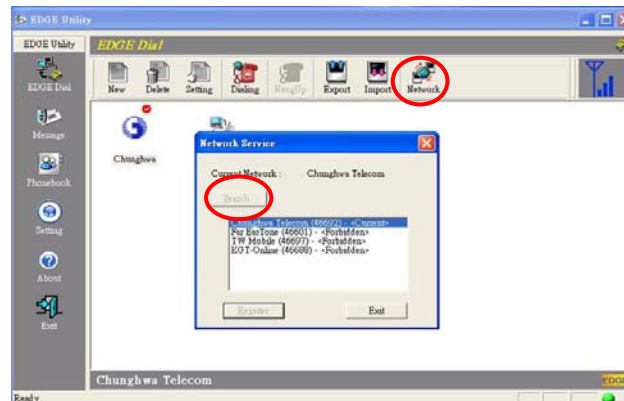


Users Manual

- "TCP/IP" & "DNS" options will appear, you can enter the network's IP & DNS address or leave it blank to use the Server assigned address; then click "Finish".



- Searching Network Availability.

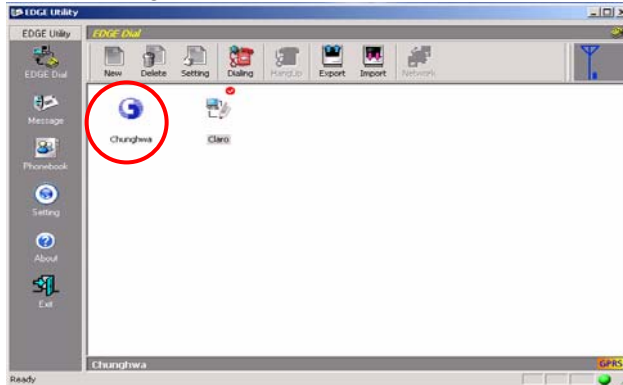


EDGE modem Usage

1. Double click on the "EDGE Manager" on your desktop to initiate the EDGE connection.

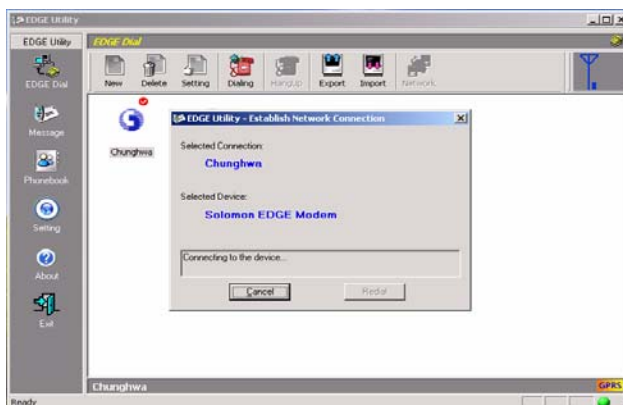


2. Double click on the connection in the "EDGE Utility" window to start dialing.

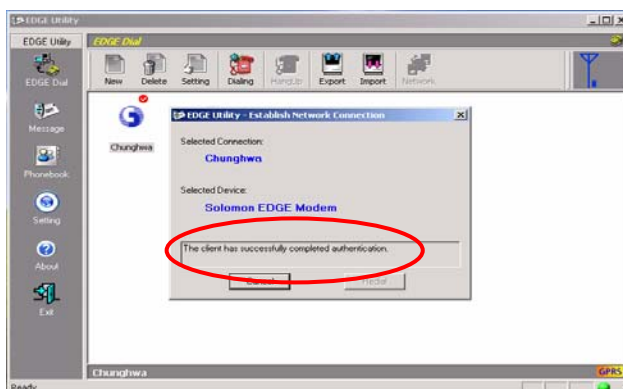


Users Manual

3. EDGE Utility start performing dialing to the network.

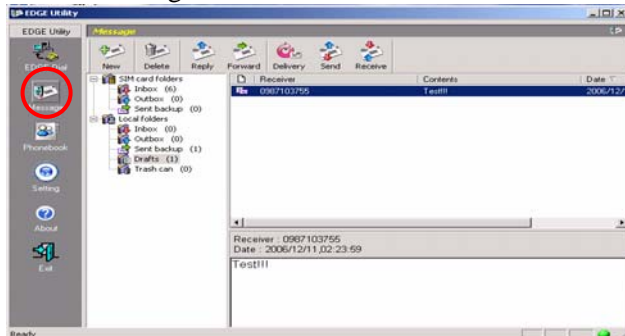


4. Once the connection is established, the modem connection will appear in the message.

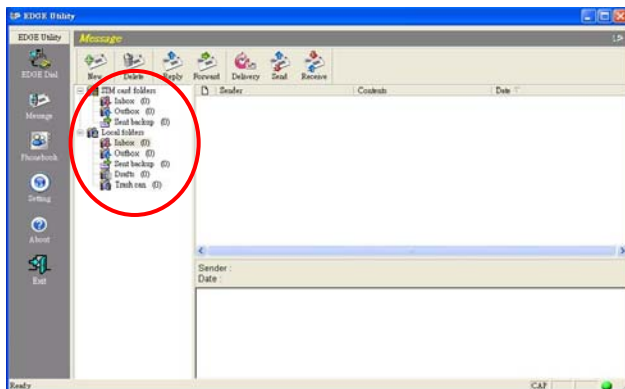


Send and Receive SMS

1. Click "Message" icon and the SMS functions will be initiated.



2. The SMS user interface.

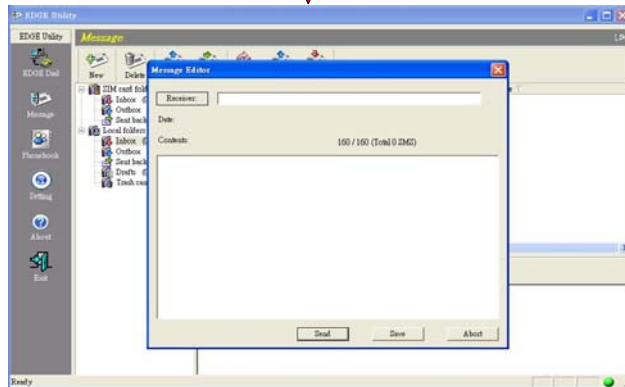
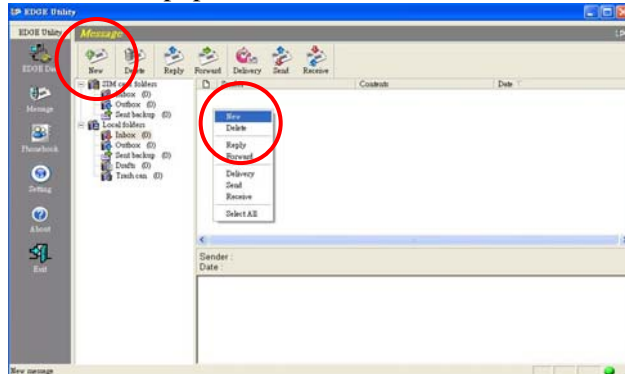


- ◆ Folders including: SIM card folders and Local folders; SIM card folders indicate the contents stored on the SIM card and the Local folders indicate the contents stored on the local PC.

Users Manual

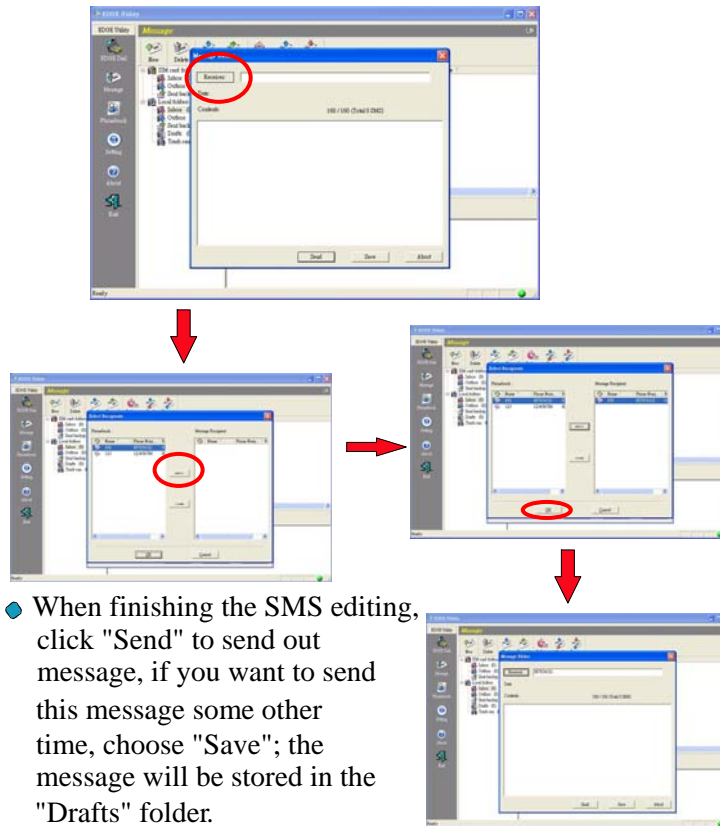
New SMS

1. Click on "New" in the toolbox or right mouse click on the empty folder content select "New", the Message Editor window will pop out.



Users Manual

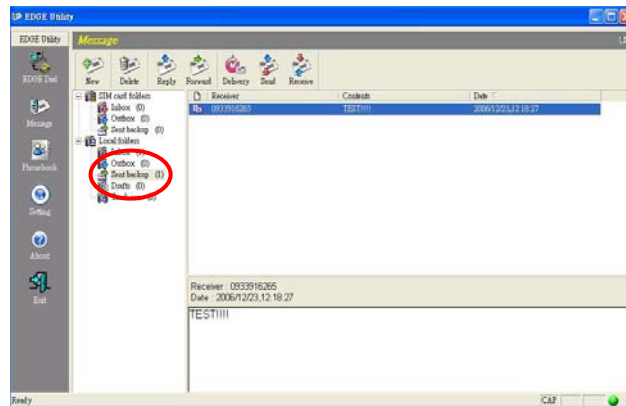
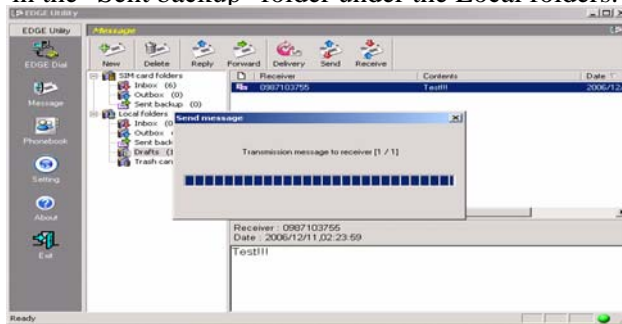
- 2. Click "Recipient" on the Message Editor window to select recipient from the phonebook or type in the recipient's phone number, you may choose multiple recipients for the SMS service.



- ◆ When finishing the SMS editing, click "Send" to send out message, if you want to send this message some other time, choose "Save"; the message will be stored in the "Drafts" folder.

Users Manual

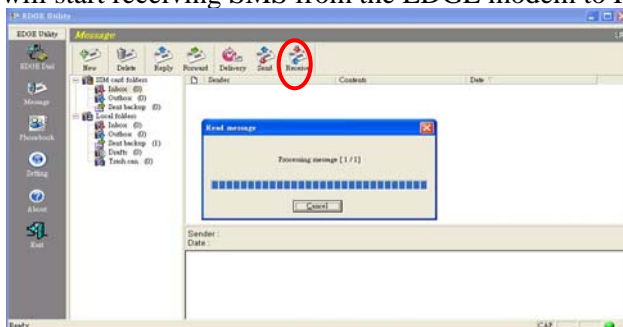
- 3. Send SMS progress window: Shows the progress of the SMS being sent to the network, a backup will be stored in the "Sent backup" folder under the Local folders.



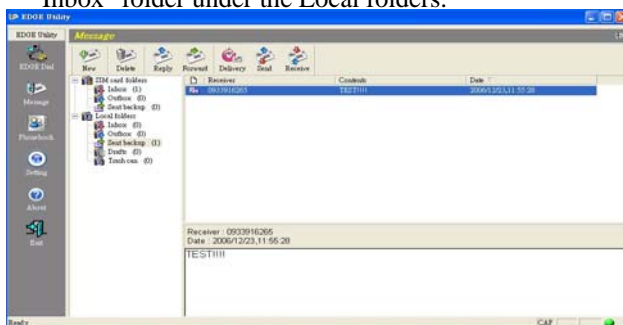
Sent backup window

Receive SMS

1. Click "Receive" in the toolbox or the right button on mouse. Then click the empty folder content, select "Receive", then it will start receiving SMS from the EDGE modem to PC.

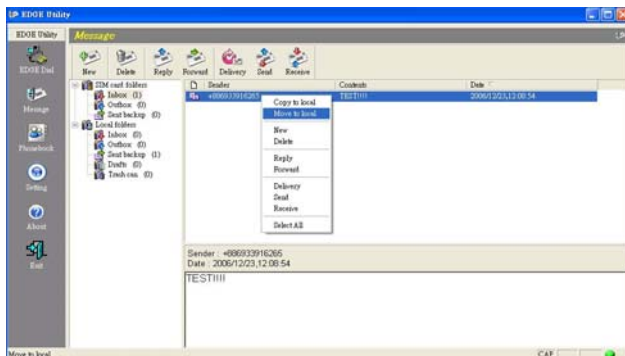


2. There are two modes for to receiving the SMS from the EDGE modem to the PC.
 - ① Preview Mode: Messages are resided on SIM card.
 - ② Post Mode: Messages will be moved from SIM card to the "Inbox" folder under the Local folders.

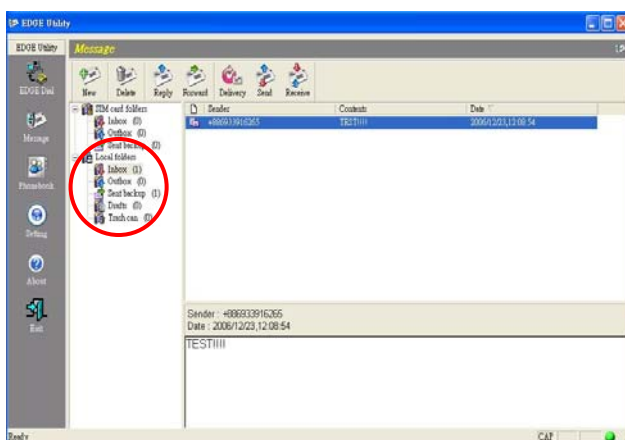


Duplicate or move the received SMS

1. If you right click on any of the received SMS, you can copy or move SMS to the Local PC.



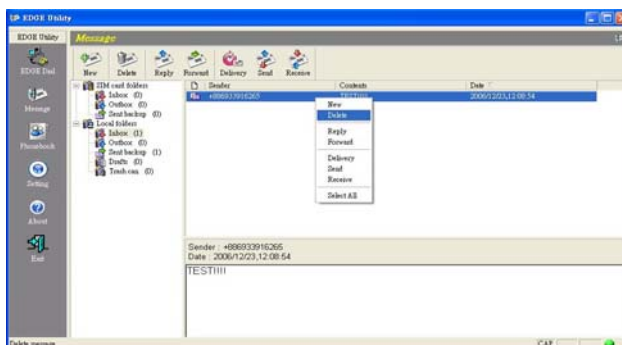
2. The selected SMS will get copied or moved to the "Inbox" folder under the Local folders.



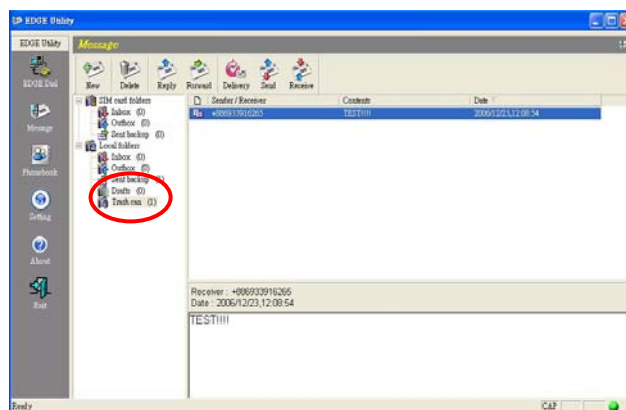
Users Manual

Delete SMS

1. Select the SMS you wished to delete then click on "Delete" in the toolbox to delete it or click on the right button on mouse and select "Delete".

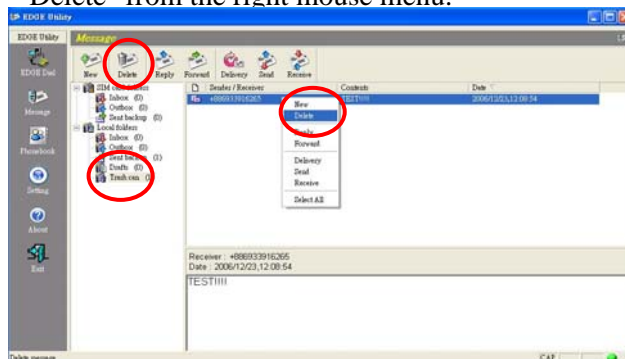


2. The deleted SMS will be moved to the "Trash can" folder under the Local folders.

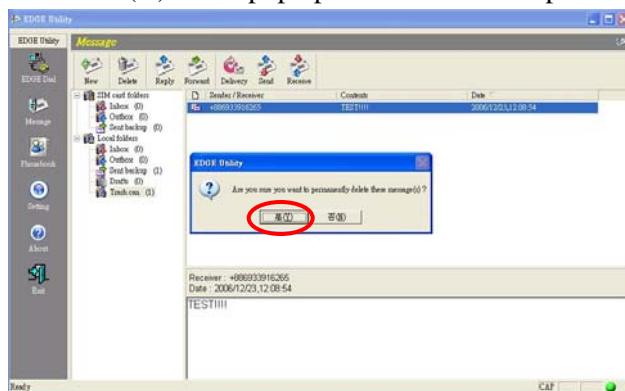


Delete SMS permanently

1. Select the SMS you want to delete permanently in the "Trash can" folder, then click on "Delete" in the toolbox to delete it permanently or right mouse click to select "Delete" from the right mouse menu.

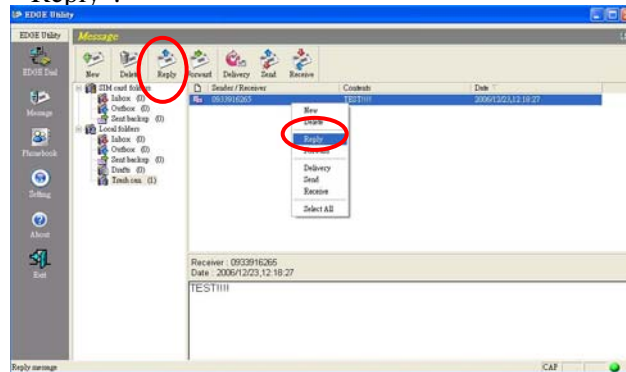


2. Click on (Y) in the pop window to delete permanently.

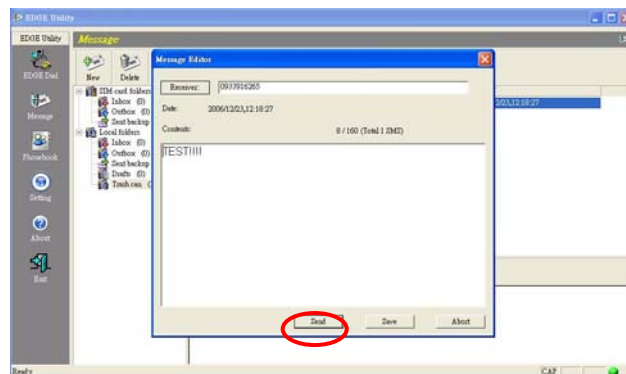


Reply an SMS

1. Select the SMS you want to reply then click on "Reply" in the toolbox or click the right button on mouse and select "Reply".

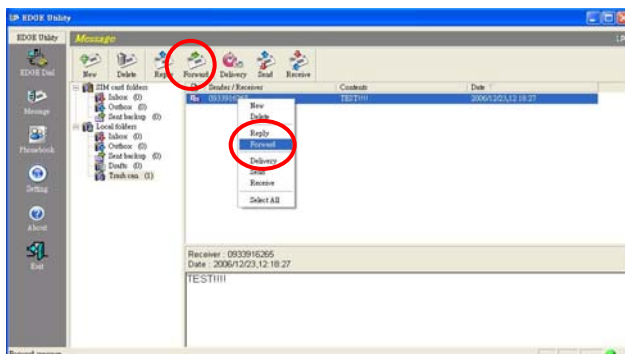


2. Click "Send" to send out the message after finishing SMS edition.

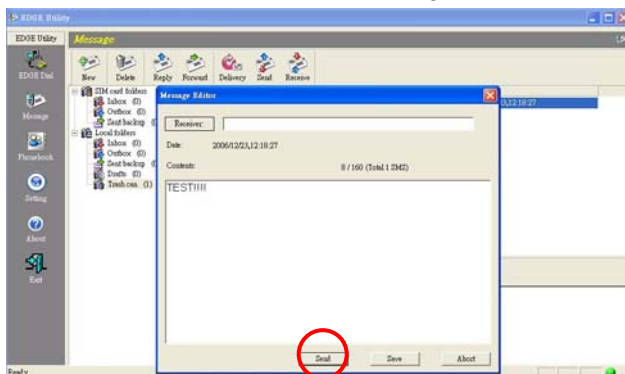


Forward an SMS

1. Select the SMS you want to forward then click "Forward" in the toolbox or click the right button on the mouse and select "Forward".

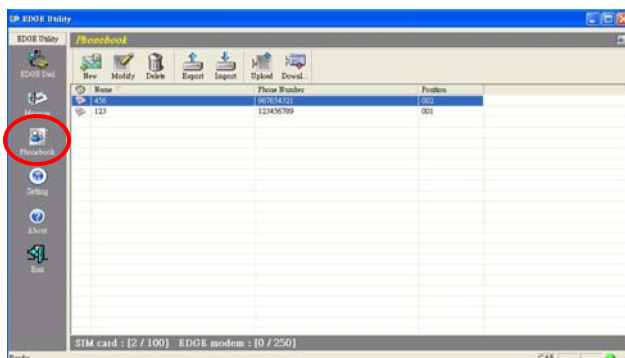


2. Select "Recipient" and finish the SMS edition, then click "Send" to send out the message.

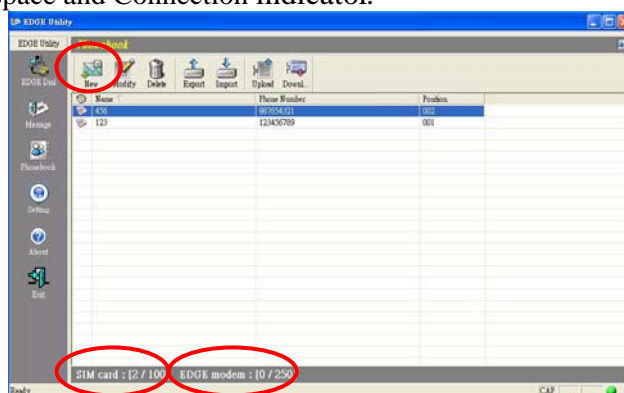


Users Manual

- Please click the "Phonebook" icon. Names and phone numbers inside EDGE modem and SIM card will be displayed.



- Phonebook user interface contains: Toolbox, Phonebook, Used SIM card memory space, used EDGE modem memory space and Connection indicator.



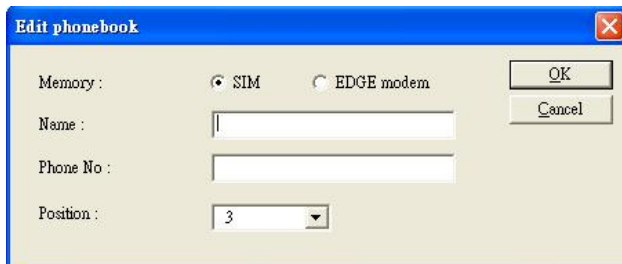
Users Manual

- Toolbar includes below icons: New, Modify, Delete, Export, Import, Upload and download.



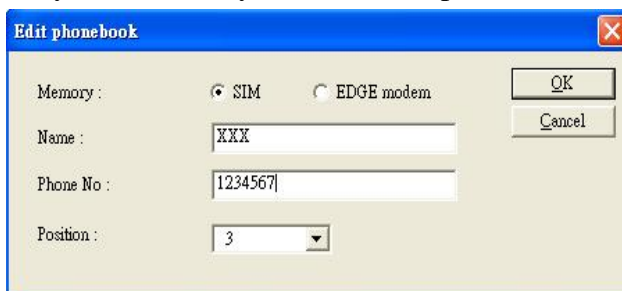
Add a New Contact

- Add a new contact: Please enter name, phone number, and choose to store in the EDGE modem or SIM card.

A screenshot of a dialog box titled 'Edit phonebook'. It has a blue title bar with a close button. The main area is light beige. It contains: 'Memory : SIM EDGE modem', 'Name :' followed by an empty text box, 'Phone No :' followed by an empty text box, and 'Position :' followed by a dropdown menu showing '3'. On the right side, there are 'OK' and 'Cancel' buttons.

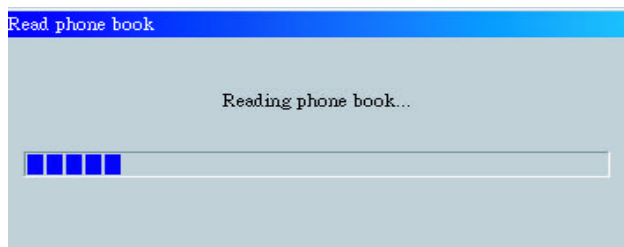
Phonebook edition

- Select a contact data need to be modified and click “Edit”. Then you can modify the name and phone number.

A screenshot of the same 'Edit phonebook' dialog box. The 'Name' field now contains 'XXX' and the 'Phone No' field contains '1234567'. The 'Position' dropdown still shows '3'. The 'OK' and 'Cancel' buttons are visible on the right.

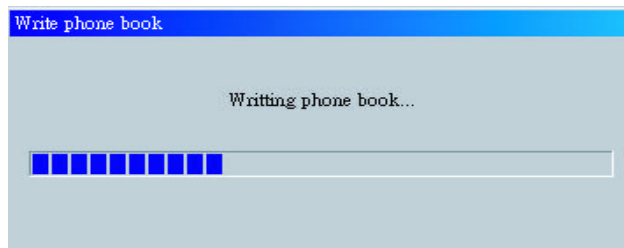
Upload

- Users can upload modified contact data to EDGE modem or SIM card.



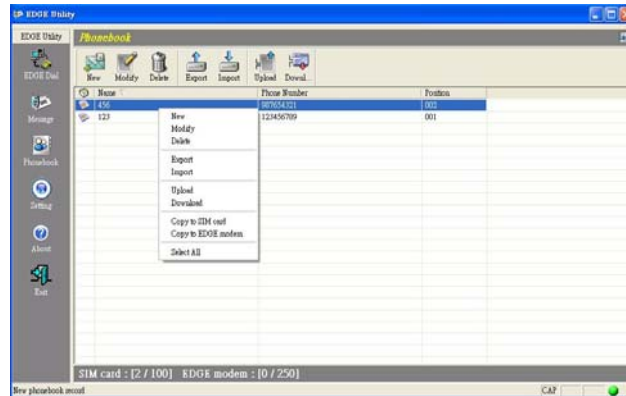
Download

- Users can download phonebook from the EDGE modem or SIM card into the PC.



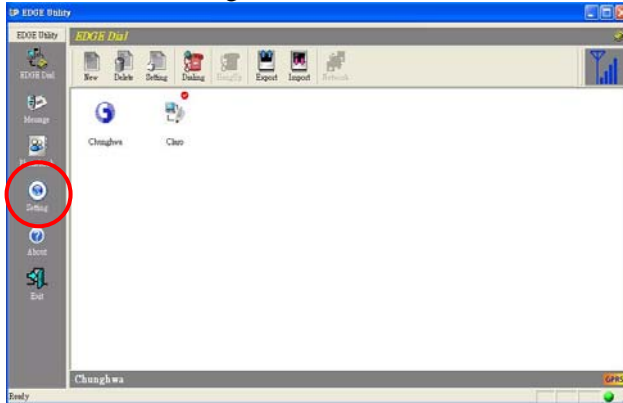
Speed editing

- All above features can also be executed by clicking the right button of the mouse and select menu.

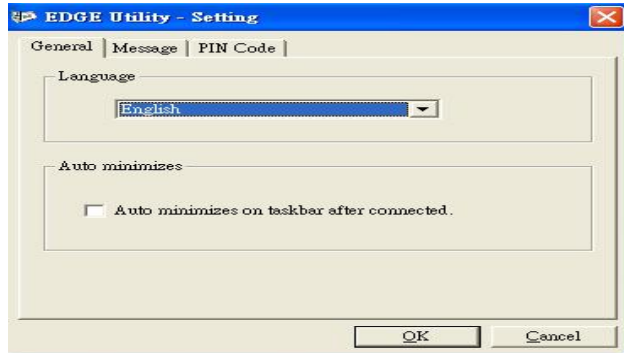


Setting

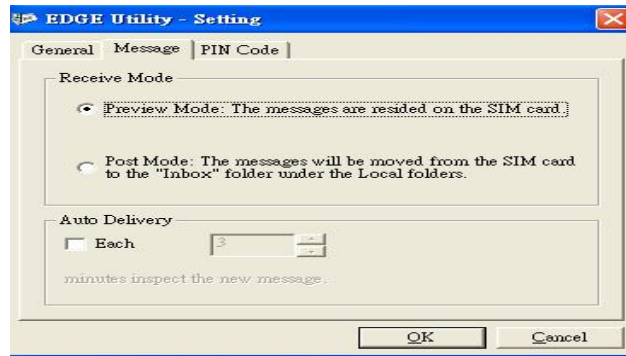
1. Please click "Setting" icon.



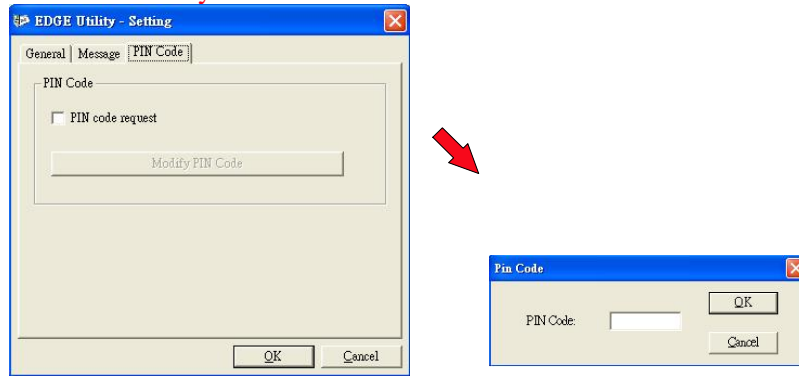
- General: Users can choose English, Traditional Chinese, Simplified Chinese, and Portuguese.



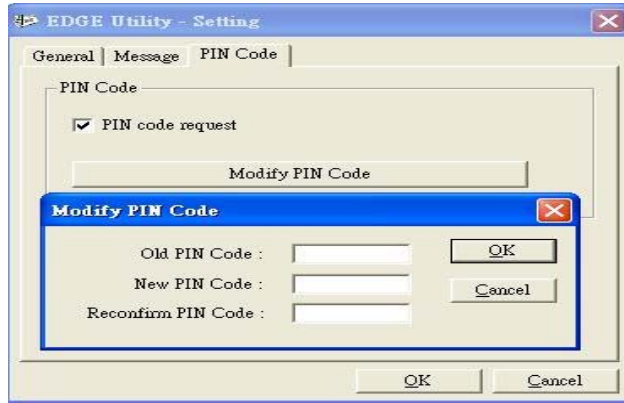
- ◆ Message: Users can choose from Preview mode and Post mode.



- ◆ Pin code: Please enable the PIN code request before using the security service. Users must enter the original default PIN code or the modified PIN code. **Please notice SIM card will get locked if you entered the incorrect PIN code three times.**



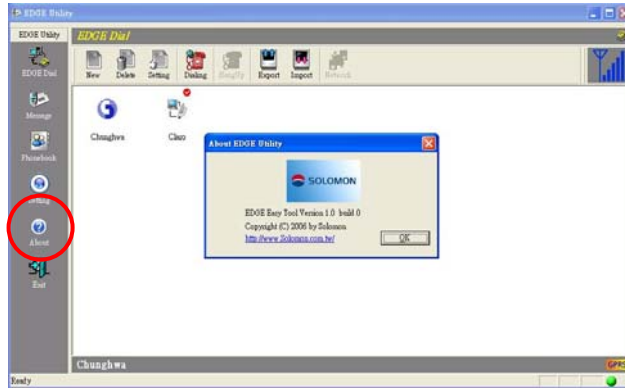
2. Change PIN code: PIN code in SIM card can be modified. Please enter the old PIN code twice, then entering the new PIN to complete the process. **Please notice after entering incorrect PIN code three times, the SIM card will be locked (PUK code is required to unlock it).**Please enable the PIN code request before modifying the PIN code.



Users Manual

About

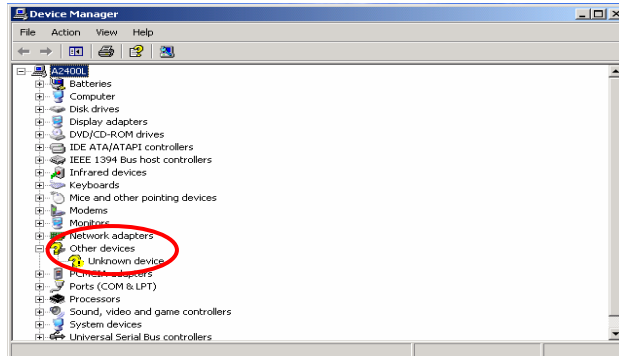
1. About: users can check the revision of the software release.



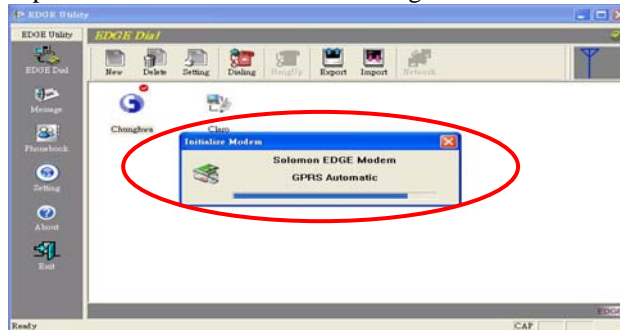
Q & A

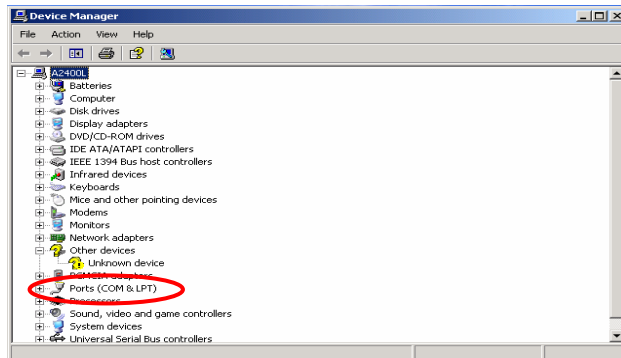
EDGE modem installation failure:

- A 1. Please make sure you have properly installed the USB EDGE software, if not, please re-install the software.
2. Did you plug the EDGE modem into the computer USB port prior to the USB EDGE software installation? If yes, please remove the device from Windows Hardware Manager.



- B If EDGE Utility initialize procedure halted when opening this process. Please check ports in device manager, and remove all hardware devices in the ports. Then install EDGE modem again.





- C Could not establish EDGE connection
1. Please make sure your SIM card has granted EDGE service.
 2. Please make sure you have chosen the right operator's icon, which coincide with your SIM card. Different operator will have different telecom network parameter setting.
 3. When SGEM-520 is trying to establish EDGE connection, the blue LED will flicker. If the blue LED still flickers, please wait a moment, the required establishing time depends on RF signal quality and computer status.
- D Data rate is unstable and slow
1. Please disconnect and re-connect the SEGM-520, so the telecom network can re-assign your module to a better sector in the system.
 2. If the transmission data rate is still slow. The reason may be the heavy traffic load in the nearest base station. Please try again later.
 3. If the transmission data rate is always not good enough. Maybe the RF signal in that area is bad, please change a place, and try again.



- E Interference during connection
1. Please keep SEGM-520 from microwave stove, stereo, or TV, these might cause connection interference.
 2. If you are in a fading dip area, the communication quality may not be good. Please plug the SEGM-520 into the USB extend cord. By adjusting the position and angle of the antenna, to achieve a better connection quality.
- F The speaker on my computer makes strange noise when I use SEGM-520, is it caused by EDGE module or some PC improper function?
- Answer: The SEGM-520 modem uses EDGE cellular phone network, the maximum transmitting power could reach 2 Watt. If your notebook is not designed for EMI protection, the speaker and your PC might work unsuccessfully, it is not the fault SEGM-520.
- G Why does my SEGM-520's network connection be interrupted without moving it?
1. Perhaps the nearest base station is under heavy load. Therefore, please access to network later.
 2. The network is dynamically re-allocating all mobile handsets in its sector. If your SEGM-520 is allocated to a sector with lower signal you might get disconnected, just re-connect.
- H Is the RF power of the SEGM-520 hazardous to human body? The SEGM-520 is plugged into your computer. Unlike mobile phone is hold in user's head. The influence of SEGM-520 on human body is much slighter than mobile phones
- I Can I use SEGM-520 to dial a speech phone call? SEGM-520 is for data only. But users can still make speech phone call through Internet such as Skype.



- J May I use SEGM-520 abroad?
Yes, but please make sure your EDGE roaming is activated,
and the overseas country is offering the adequate frequencies for your
SEGM-520 modem.
- K Am I logging on to the real Internet or just WAP?
Yes, real internet, not WAP
- L I have SIM pin on my SIM card; do I need to remove the SIM pin first?
Yes, please remove the SIM pin first.
- M Why my SEGM-520 modem begin hot up when using it?
The SEGM-520 modem's maximum transmission power is 2W in
900MHz, and 1W in 1800MHz, which induces larger current
consumption, subsequently the operation temperature goes
higher, it's normal condition.



FCC INFORMATION

The Federal Communication Commission Radio Frequency Interference Statement includes the following paragraph:

The equipment has been tested and found to comply with the limits for a Class B Digital Device, pursuant to part 15 of the FCC Rules. These limits are designed to provide reasonable protection against harmful interference in a residential installation. This equipment generates, uses and can radiate radio frequency energy and, if not installed and used in accordance with the instruction, may cause harmful interference to radio communication. However, there is no grantee that interference will not occur in a particular installation. If this equipment does cause harmful interference to radio or television reception, which can be determined by turning the equipment off and on, the user is encouraged to try to correct the interference by one or more of the following measures:

- Reorient or relocate the receiving antenna.
- Increase the separation between the equipment and receiver.
- Connect the equipment into an outlet on a circuit different from that to which the receiver is connected.
- Consult the dealer or an experienced radio/TV technician for help.

FCC Radiation Exposure Statement:

This equipment complies with FCC radiation exposure limits set forth for an uncontrolled environment.

This device complies with Part 22, 24 of the FCC Rules. Operation is subject to the following two conditions: (1) This device may not cause harmful interference, and (2) this device must accept any interference received, including interference that may cause undesired operation.

The user should not modify or change this equipment without written approval from SOLOMON Technology Corporation. The modification could void authority to use this equipment.

