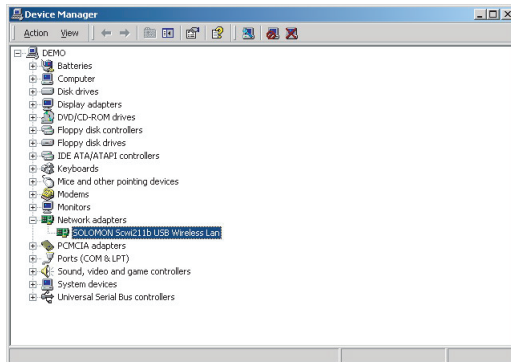


# Users Manual

5. The computer shall automatically find the USB WLAN dongle software driver, click on "Next" to proceed.
6. Click on "Finish" to complete the installation.
7. Should you wish to check the installation is successful or not?  
Please follow the steps to check the hardware.

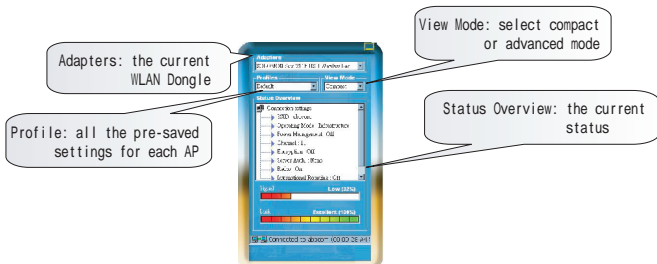
Right click on "My Computer" to choose "Property", select "Hardware" then click on "Device Manager", scroll to "Network Adapters" to see if "SOLOMON Scwi211b USB Wireless Lan" is properly installed.





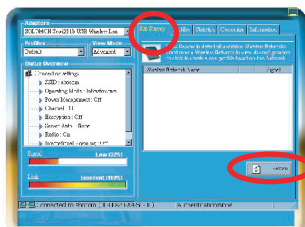
# Users Manual

## The utility program



### Compact Mode

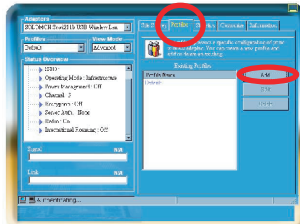
**Site Survey**: click on "Rescan" to view all the available AP in your area, the each individual signal strength will be shown, double click on the AP you wished to connect, you may choose to save the settings as a profile, you may choose the profile to connect to each particular AP for later days.



### Advanced Mode

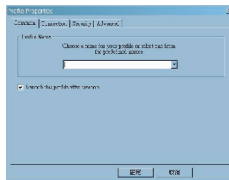
# Users Manual

**Profiles** : to view all the pre-saved settings for each AP, you may add new profile or edit an existing profile

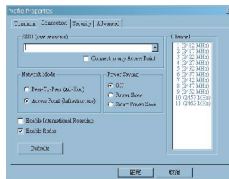


Click on "add" to edit a new profile

**Common** : to enter a profile name

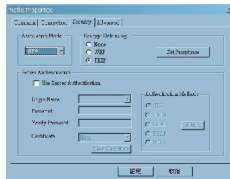


**Connection** : select the necessary settings



# Users Manual

**Security :** choose the encryption type, WEP and TKIP are provided, you may also choose 64 or 128 bit encryption codes



**Advanced :** to set up Fragment Threshold, Tx Power Level, RTS/CTS Threshold, Link Speed and Preamble

