

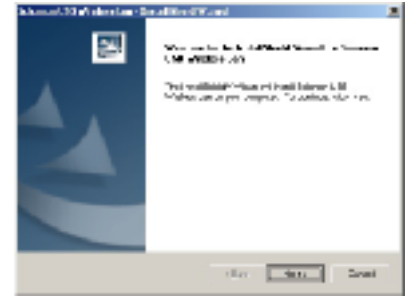
# Easy installation Guide:



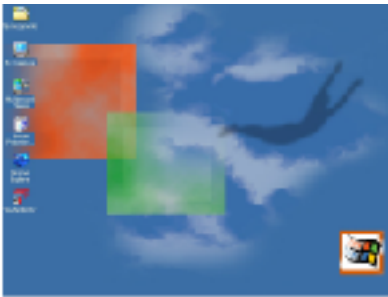
1. Insert the WLAN Dongle into the USB port on the computer, computer will show found new hardware and the "Upgrade Device Driver Wizard" will show up, choose "search for a suitable driver" and then click on "Next" to continue.



2. Put the installation CD into the CDROM drive and the installation program will get invoked.



3. Click on install driver to proceed.



4. When the installation is completed, "WLAN Monitor" shortcut icon will be on the desktop.



5. Site Survey: Click on Rescan to search the nearby AP (access point), the names of the AP and their signal strength will be displayed. Double click on the AP you wished to access to start the connection. You may also choose to save the profile of the AP to be used in later days.



6. Security: You may choose WEP or TKIP for security; WEP can choose 64 or 128 Bit encryption.

## NOTE

This equipment has been tested and found to comply with the limits for a Class B digital device, pursuant to Part 15 of the FCC Rules. These limits are designed to provide reasonable protection against harmful interference in a residential installation. This equipment generates, uses and can radiated radio frequency energy and, if not installed and used in accordance with the instructions, may cause harmful interference to radio communications. However, there is no guarantee that interference will not occur in a particular installation. If this equipment does cause harmful interference to radio or television reception, which can be determined by turning the equipment off and on, the user is encouraged to try to correct the interference by one or more of the following measures:

- Reorient or relocate the receiving antenna.
- Increase the separation between the equipment and receiver.
- Connect the equipment into an outlet on a circuit different from that to which the receiver is connected.
- Consult the dealer or an experienced radio/TV technician for help.

Changes or modifications not expressly approved by the party responsible for compliance could void the user's authority to operate the equipment.

The antenna(s) used for this transmitter must not be co-located or operating in conjunction with any other antenna or transmitter

## FEDERAL COMMUNICATIONS COMMISSION

This device complies with Part 15 of the FCC Rules. Operation is subject to the following two conditions: (1) this device may not cause harmful interference, and (2) this device must accept any interference received, including interference that may cause undesired operation.

This device complies RF exposure limits of OET 65C