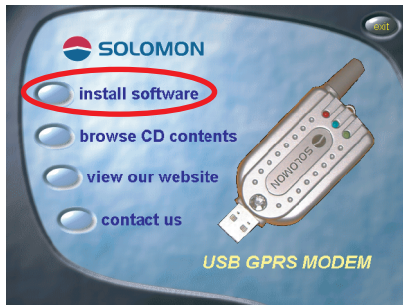


Users Manual

■ Install the software

Install the GPRS modem driver software

1. Click on "install software".

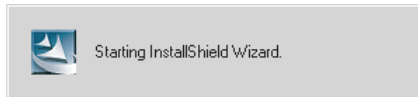


2. Select "Install driver" to proceed.

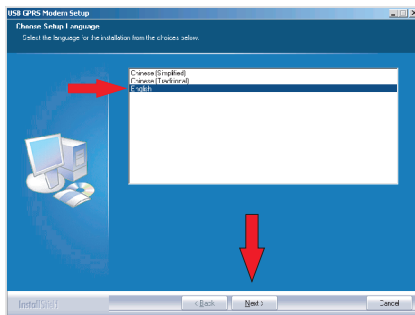


Users Manual

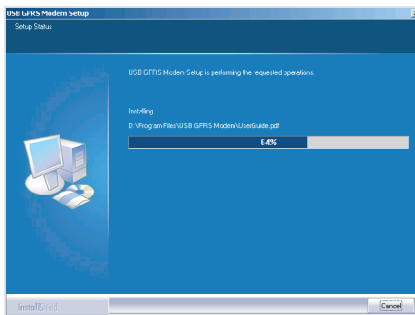
3. InstallShield Wizard is activated.



4. Choose language: you may choose "English", then click "Next".

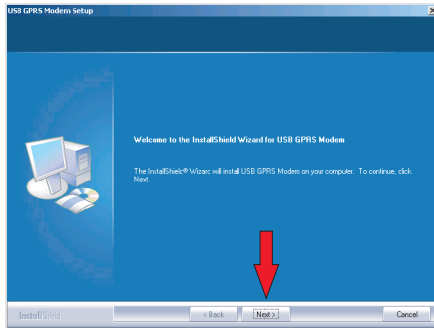


5. "Setup status" shows up.

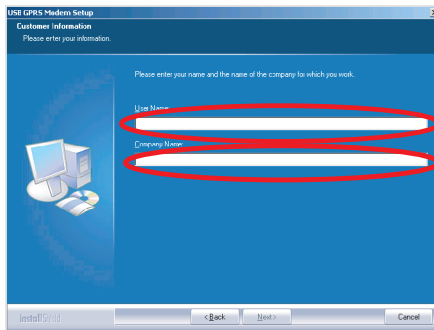


Users Manual

6. "USB GPRS Modem InstallShield Wizard" shows up, then click "Next".

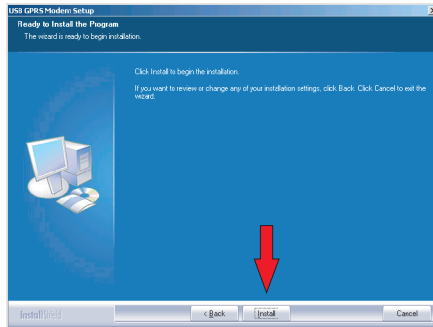


7. Please enter your name and company name on this page, then click "Next",

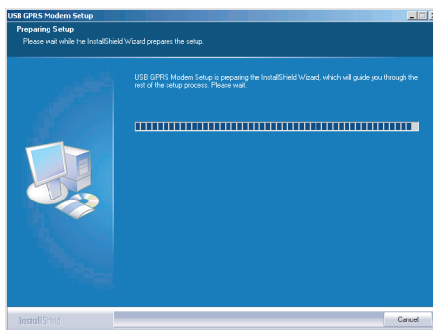


Users Manual

8. "Ready to Install Software" shows up, then click on "Install".

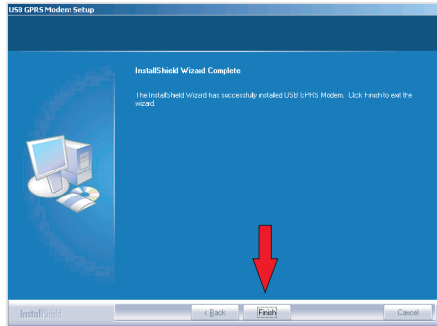


9. Now you may witness the progress (percentage) of the installation.

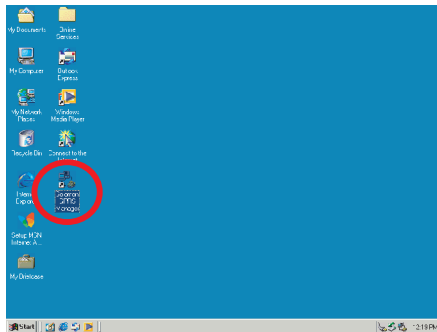


Users Manual

10. "InstallShield Wizard Complete" shows up, then click on "Finish".



11. On your desktop, you may see a "Solomon GPRS Manager" icon.



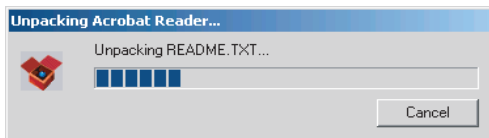
Users Manual

Install Adobe Acrobat Reader

1. If you do not have a previously installed Adobe Acrobat Reader on your computer, then you may install the Adobe Acrobat Reader now. On the Installation Wizard, please click on "install Adobe Acrobat Reader".

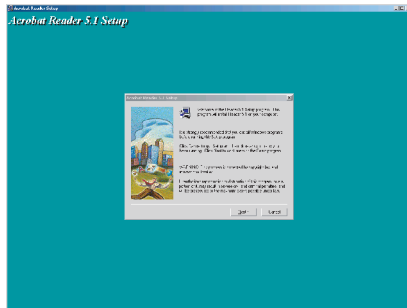


2. "Unpacking Acrobat Reader" shows up.

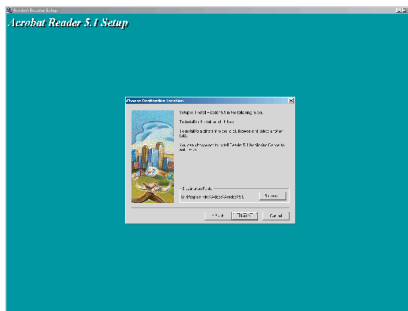


Users Manual

3. "Acrobat Reader 5.1 Installation" shows up, then click on "Next".

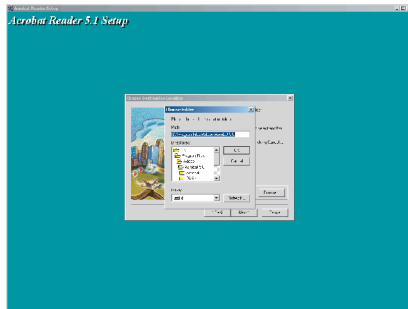


4. "Acrobat Reader 5.1 Installation path" shows up, you may click on "next" or choose "browse" to choose another path.

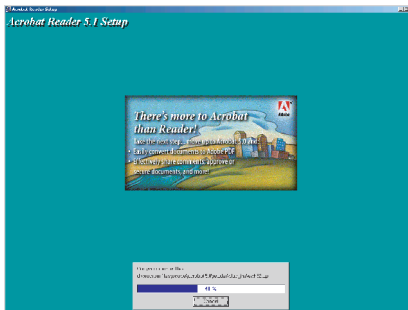


Users Manual

5. "Installation path and directory" shows up, then click on "Next".

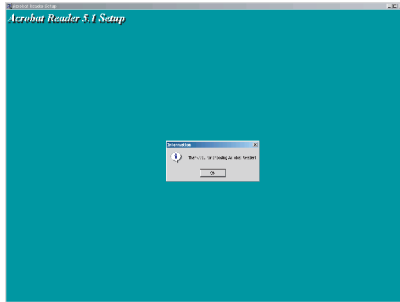


6. Now you may witness the progress (percentage) of the installation.



Users Manual

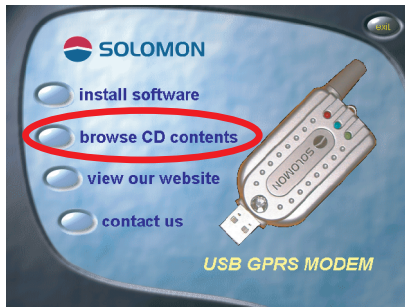
7. "Acrobat Reader 5.1 Installation Finished" shows up, then click on "Finish".



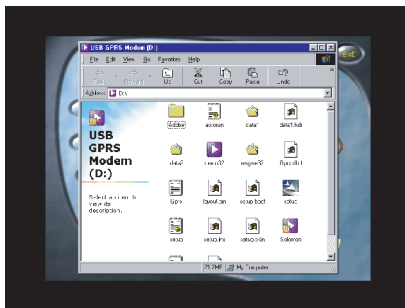
Users Manual

■ Browse CD contents.

1. Click on "browse CD contents" to look into the contents on the CD.



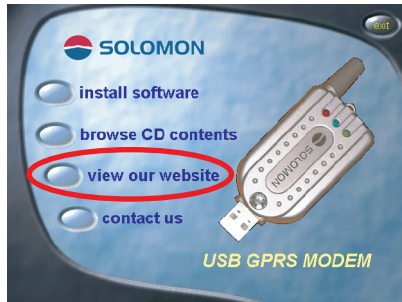
2. The contents will show up on the computer.



Users Manual

View our website

1. Click on "view our website".

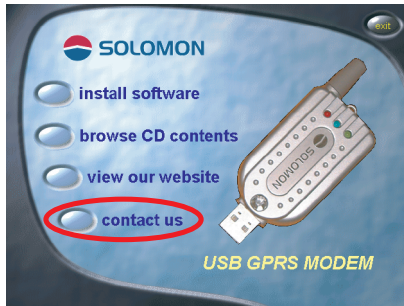


2. The browser will connect you to the Solomon WEB site (www.solomon.com.tw) if you are connected with the Internet.



Users Manual

1. Click on "contact us": you may check the related information about Solomon.



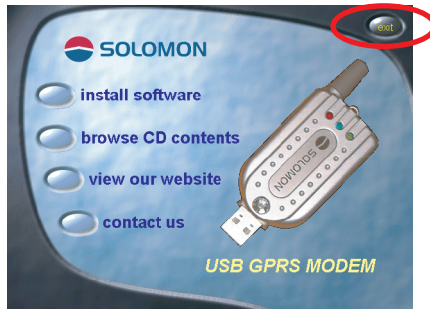
2. The relevant information on Solomon will show up.



Users Manual

Exit

1. Click on "Exit" to end the USB GPRS Installation Wizard.



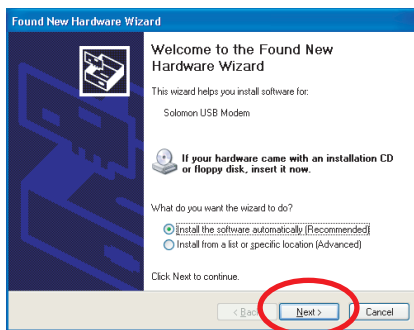
2. Click on "Exit" again to exit the "Thank you" window.



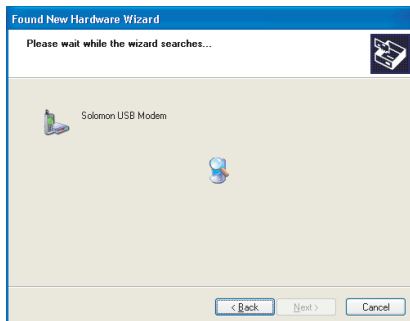
Users Manual

■ To install the GPRS modem

1. Plug the GPRS modem into the USB port on your notebook or PC.
2. The "Found New Hardware Wizard" will show up on the screen, then click "Next".

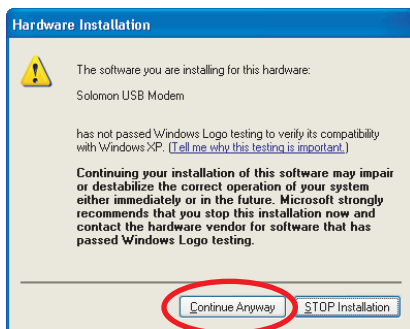


3. "Please wait while the wizard searches" shows up.

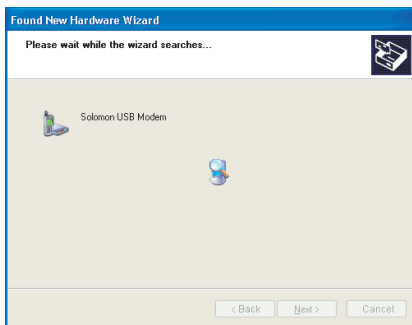


Users Manual

4. Computer has found the Solomon USB modem, click "Continue Anyway".

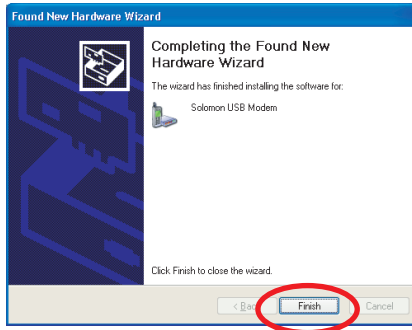


5. Computer is now installing the software for the Solomon USB modem.



Users Manual

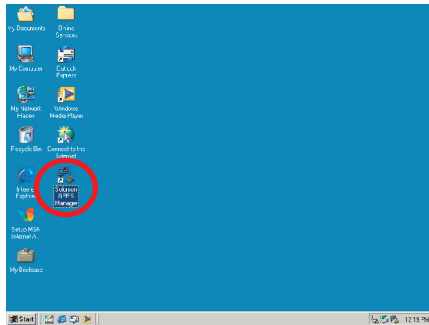
6. Click "Finish" to finish the installation.



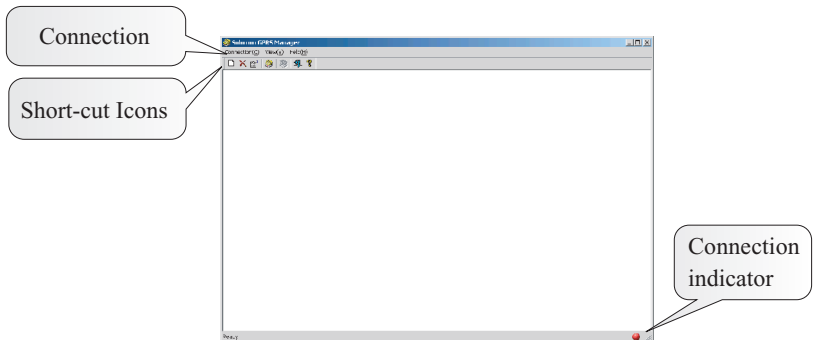
Users Manual

Setup the GPRS modem

1. Double click on the "Solomon GPRS Manager" icon on your desktop (your GPRS modem is already plugged into the USB port on your computer) to start the connection settings.

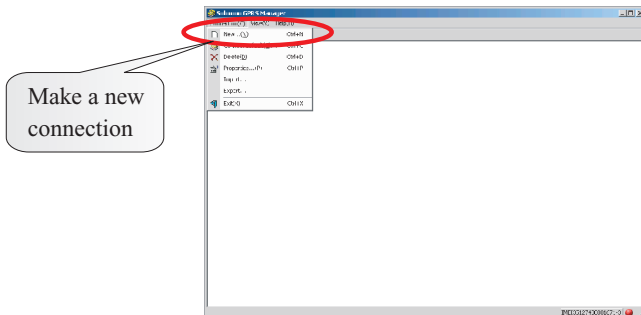


2. "Solomon GPRS Manager" will show up.

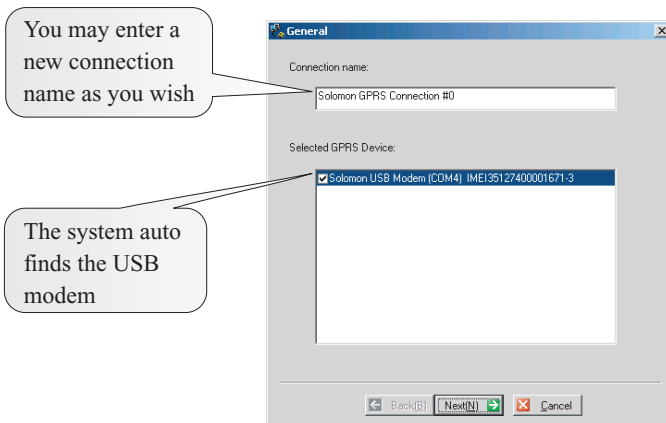


Users Manual

3. Pull down the Connection menu bar and choose "make a new connection" to establish the connection settings.



4. "Solomon GPRS Connection #0" will show up, you may enter a new connection name as you wish, then click "Next".



Users Manual

5. "GPRS" configuration menu will show up, you may enter the user name, password and the connection number, if you click on "Extra settings", you may setup the APN options, then click on "Next".

The screenshot shows the "GPRS" configuration window. It has two main sections: "Username and Password Required" and "Extra Setting Required".

- Username and Password Required:** Includes fields for "Username:", "Password:", and "Confirm Password:". A callout bubble points to these fields with the text "Enter the user name and password".
- Phone Number:** A single-line text field. A callout bubble points to it with the text "Enter the connection number".
- Extra Setting Required:** Includes radio buttons for "APN only:" and "Entire setting:". A callout bubble points to the "APN only:" field with the text "Enter the APN options".

At the bottom, there are three buttons: "Back(B)", "Next(N)", and "Cancel".

6. "TCP/IP" & "DNS" options will show up, you may enter the network's IP & DNS address or leave it blank to use the Server assigned address, and then click "Finish".

The screenshot shows the "TCP/IP" configuration window. It has two main sections: "IP Address" and "DNS/WINS Address".

- IP Address:** Includes radio buttons for "Server assigned IP address" and "Specify an IP address:". A callout bubble points to the "Specify an IP address" field with the text "Enter the Network's IP address".
- DNS/WINS Address:** Includes radio buttons for "Server assigned DNS address" and "Specify DNS/WINS address:". Below this are fields for "Preferred DNS Server:", "Alternate DNS Server:", "Preferred WINS:", and "Alternate WINS Server:". A callout bubble points to the "Specify DNS/WINS address" section with the text "Enter the Network's DNS address".

At the bottom, there are three buttons: "Back(B)", "Finish", and "Cancel".

Users Manual

7. Here below is an example of how to setup the GPRS modem, please contact your local network for precise information.

User Name and Password:

enter the user name and password or leave it blank.

Phone number:

Enter the connection number such as *99#.

Extra settings:

enter the APN name such as "internet".

Entire setting:

You may choose to enter special AT commands streams such as `at+cgdcont=1,"ip","internet"`.

IP address:

You may enter an individual IP address if it is required by the network, or click on "Server Assigned IP Address" instead.

DNS Address:

You may enter an individual DNS address if it is required by the network, or click on "Server Assigned DNS Address" instead.