

# Users Manual

## SCMi250u USB GPRS Modem



# Users Manual

## **FEDERAL COMMUNICATIONS COMMISSION**

This device complies with Part 15 of the FCC Rules. Operation is subject to the following two conditions:(1) this device may not cause harmful interference, and (2) this device must accept any interference received, including interference that may cause undesired operation.

## **Note**

This equipment has been tested and found to comply with the limits for a Class B digital device, pursuant to Part 15 of the FCC Rules. These limits are designed to provide reasonable protection against harmful interference in a residential installation. This equipment generates, uses and can radiated radio frequency energy and, if not installed and used in accordance with the instructions, may cause harmful interference to radio communications. However, there is no guarantee that interference will not occur in a particular installation. If this equipment does cause harmful interference to radio or television reception, which can be determined by turning the equipment off and on, the user is encouraged to try to correct the interference by one or more of the following measures:

- Reorient or relocate the receiving antenna.
- Increase the separation between the equipment and receiver.
- Connect the equipment into an outlet on a circuit different from that to which the receiver is connected.
- Consult the dealer or an experienced radio/TV technician for help.

Changes or modifications not expressly approved by the party responsible for compliance could void the user's authority to operate the equipment.

This EUT is in compliance with SAR for general population /uncontrolled exposure limits in ANSI/IEEE C95.1-1999 and had been tested in accordance with the measurement methods and procedures specified in OET Bulletin 65 Supplement C.

The manufacturer is not responsible for any radio or TV Interference caused by unauthorized modifications to this equipment. Such modifications could void the user's authority to operate the equipment.

# Users Manual

## ■ Copyright

This USB GPRS Modem Installation Guide is copyright by Solomon Tech. Corp. with all rights reserved. No part of this document maybe reproduced in any form without the prior written approval of Solomon Tech. Corp.

## ■ Disclaimer

The information in this document is accurate at time of release. However, as Solomon Tech. Corp. is committed to continued research and development activities, these specifications may change from time to time. Contact your local representative should you require clarification on information contained in this document or to request of copy of the latest version of this document.

# Users Manual



## ■ Be aware of aviation safety

Please do not use this device on the civilian airplanes, the aviation instruments on board maybe interfered by the RF power leads to failure.



## ■ Be aware of your surroundings

Please do not use this device when your are close to gas stations, fuel silos, chemical factories, or explosive materials.



## ■ Be aware of traffic safety

Please do not use this device when you are driving a vehicle.



## ■ Be aware of the RF power.

Keep your body at least 2 inches (5 cm) away from the antenna when in use.



## ■ Be aware of the medical device.

The transmitted RF power might interfere some of the medical devices such as a heart pacer, please do not use this device in hospitals.

## Warnings



■ The device is a delicate instrument, please handle with care, it is prohibited to fall on the ground or bent to avoid damage to the device.



■ There are no parts to be maintained by the user, if the device seemed to be not functioning, please have it serviced by the qualified technician at the qualified service center. To avoid damage to the device, please do not take this device apart by yourself; the warranty is void once the seal is broken.



■ Do not let children play with this device.



■ When the device is not in use, please unplugged from the notebook PC and keep it at a cold dry place.



■ Do not take the antenna off the device to avoid poor reception.



■ Do not touch the antenna when in use to avoid poor reception.



■ The device is not waterproof, please do not use it in rain or damp surroundings.

# Users Manual

## ■ Cautions when in use

- The device might suffer interference and cause poor reception when it close to a massive metal structure such as a metal furniture or inside of a steel structure of a building.
- To avoid RF interference, try not to use the device when it is close to a microwave oven or a TV.
- Please do not use the device when it has passed through dramatic temperature variations, the moisture inside the device may cause short circuits once powered on. Please wait until the moisture dries out before power on.
- The device is powered by the USB port from the computer, to avoid poor communication quality please do not power on the device when the computer is in low battery.
- It is always a nice tip to cut your large file into small packets for transmission.

## ■ SAR related issues

- The device is not a cellular phone, however please use it accordingly to the instructions.



# Memo

---



# Index

## 1. Introduction

Thanks for using .....	10
Package contents .....	11
Exterior introduction .....	12
Status indicator lights .....	13
Lock latch .....	14

## 2. Installation & setting procedures

System requirements .....	16
Software & hardware requirements .....	16
Network system requirements .....	16
SIM card installation .....	17
Insert the SIM card .....	17
Remove the SIM card .....	18
Install the GPRS modem to the PC .....	19
Software installation .....	20
Install the GPRS modem driver software .....	20
Install the Adobe Acrobat Reader .....	25



# Index

Browse the Installation Guide CD .....	39
Visit the Solomon Website .....	30
Contact us .....	31
Exit .....	32
Install the GPRS modem .....	33
Setup the GPRS modem .....	36
To use the GPRS modem .....	47
Remove the GPRS modem .....	51

## **Frequently asked Q & As**

GPRS modem installation failure .....	55
Could not open the GPRS manager .....	57
Could not establish the GPRS connection .....	57
GPRS connection is slow and unstable .....	57
Q & A .....	59
GPRS connection parameter settings .....	59

# Introduction



# Users Manual

## ■ Thanks for using

First of all, thanks for choosing the Solomon SCMi250u GPRS modem.

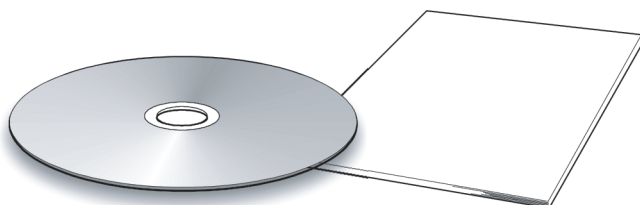
The one of a kind Solomon SCMi250u GPRS modem is light, small, no charging required and it is high-speed (64 Kbps maximum). Now your notebook PC can get on-line anywhere and everywhere! Just like you are using a physical phone line, the Solomon SCMi250u GPRS modem gets your notebook PC connected to the real Internet, you may send/receive emails and browsing the web pages just like at home or at the office when you are on a bus, in a taxi, on a train, or even in the subway (if GPRS service is available).

This Solomon SCMi250u GPRS modem installation guide will help you to understand the device and guide you through the installation procedures.

# Users Manual

## ■ Package contents.

Please check the items in the package, if there is any short or damage in the package, please contact your local representative immediately.



Installation CD

Easy Installation Guide



SCMi250u GPRS Modem



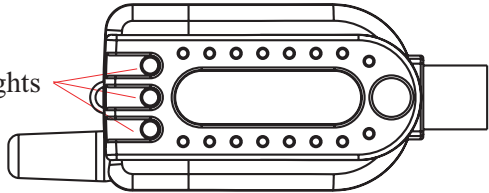
USB Extender Cord

Items	Quantity
SCMi250u GPRS Modem	1
USB Extender Cord	1
Installation CD	1
Easy Installation Guide	1

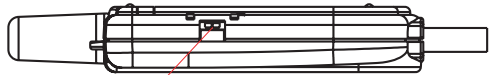
# Users Manual

## Exterior introduction

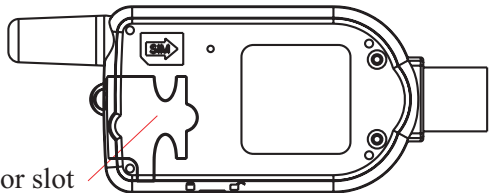
Status indicator lights



Lock latch



SIM card connector slot

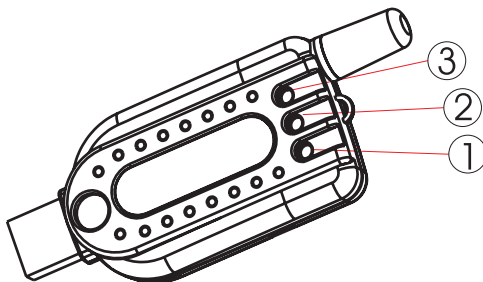


# Users Manual

## ■ Status indicator lights

Status indicator lights indicates the connection status when it is powered on.

Items	Representing
Light 1	Power indicator (Will stay on once plugged into the computer)
Light 2	Connected to the network
Light 3	Error (Invalid SIM card or failed to connect to the network)



### Note:

The normal lights-on sequence:

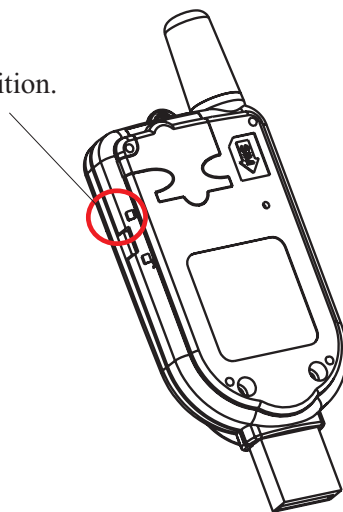
①on → ②on → ③on → ②off → ③off → ②on

# Users Manual

## ■ Lock latch

Lock latch is for the maintenance personnel to perform tests, it should be kept in "locked" at all time, however, if the latch is switched to the un-locked position, you may experience "connection failure" when you are trying to connect to the network.

Please keep it at "locked" position.



### **Note:**

The Lock latch is in default "locked" position when it is released from the factory.

# GPRS modem Installation & setting procedures





# Users Manual

## ■ System requirements

Please make sure your computer's hardware and software meet the following requirements, please refer to your computer's users manual or contact your local representative for more information.

### **Software & hardware requirements**

- A valid SIM card (GPRS service is granted)
- An USB port or a PCMCIA to USB converter card is available.
- IBM compatible Pentium II 400 MHz (or above) notebook or PC with a minimum of 64 MB RAM  
Operating System: Windows 2000/XP/ME/98 SE

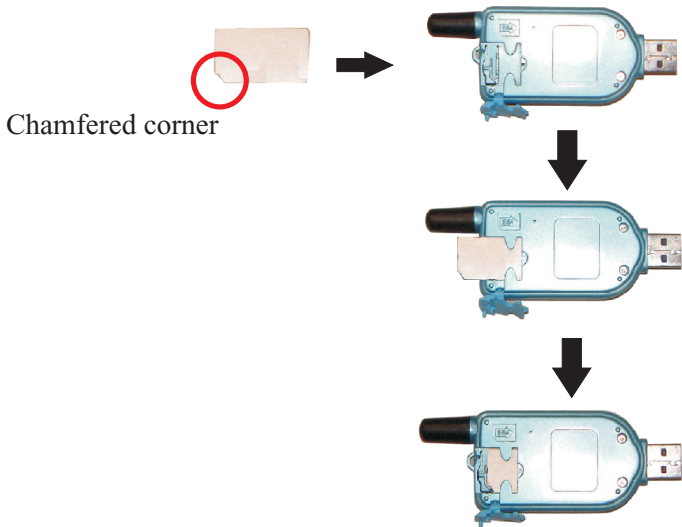
## ■ Network system requirements

Please make sure your local GSM network provides GPRS service and please apply the GPRS service from the network.

# SIM card installation

## ■ Insert the SIM card

Insert the SIM card into the SIM card compartment with the chamfered corner to click into the housing.



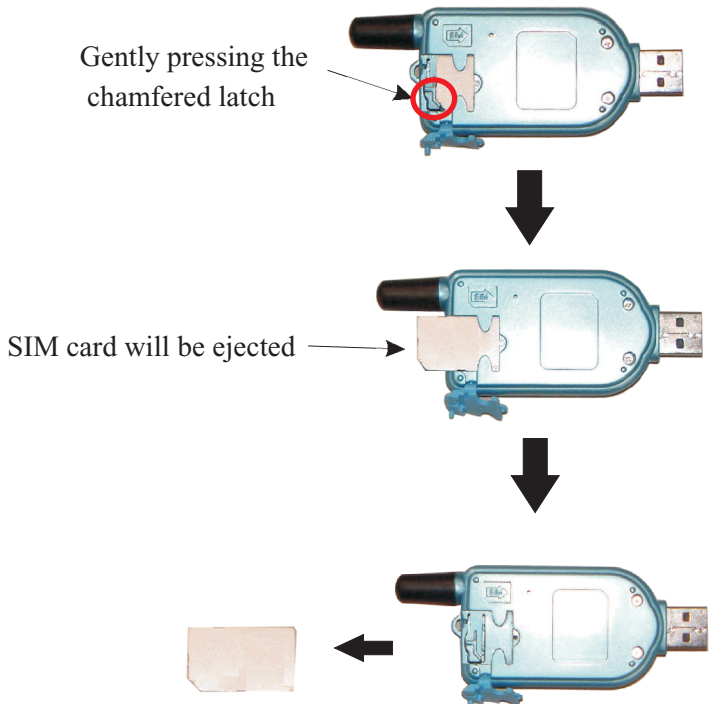
### Note:

1. Please make sure the chamfered corner on the SIM card matches with the latch on the housing.
2. If the SIM card is inserted into the housing with an incorrect direction, the SIM card won't be able to click into the chamfered latch.

# Users Manual

## ■ Remove the SIM card

Gently pressing the chamfered latch on the housing, the SIM card will be ejected from the housing automatically.



# Install the GPRS modem on the PC

## ■ Please follow the following procedures to install the driver software.

- The USB GPRS Installation Wizard will automatically determine the type of operating system on your computer and choose the proper driver for the GPRS modem.
- When the software installation is completed, plug the GPRS modem into the USB port on your computer; the operating system will automatically identify the GPRS modem.
- Then you may configure the software settings, please refer to

**Note:** Do not plug the GPRS modem into the computer prior to the software installation.

1. Put the installation disc into your CDROM on your computer.
2. The USB GPRS Installation Wizard shows up on the screen automatically.



- install software: install the driver for the GPRS modem.
- browse CD contents: browse the contents of the installation disc.
- visit our web site
- contact us: you may check the related information about Solomon.