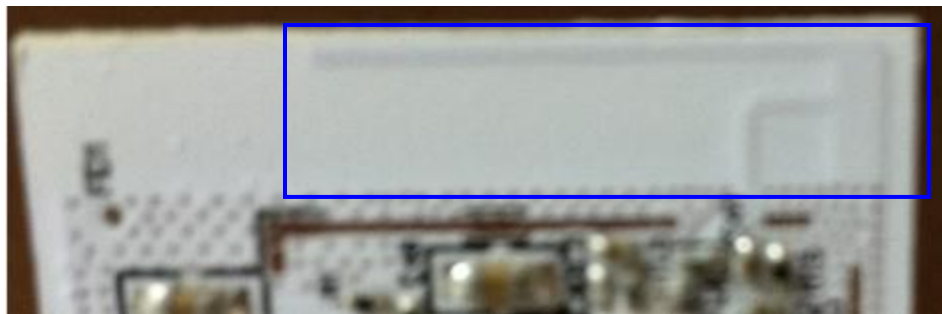
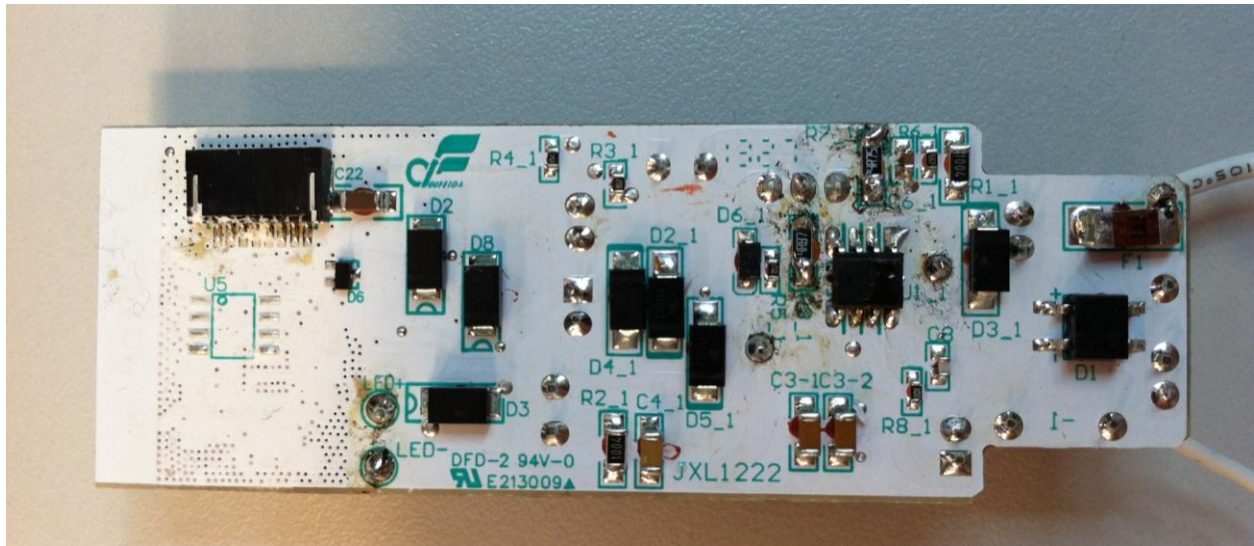


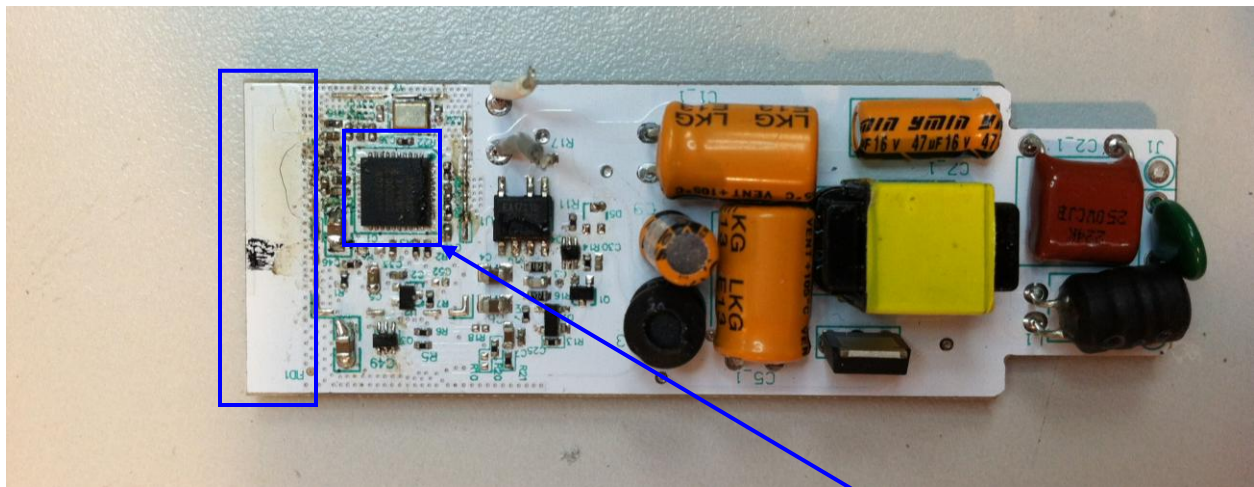
In the Blue Rectangle is the PCB based antenna. The radio is embedded in the Microcontroller, shown with a blue square and arrow.



Zoomed in on the antenna.



Bottom Side of the PCB



Top Side of the PCB. Blue Rectangle is where the Antenna is located. The radio is embedded in the Microcontroller, shown with a blue square and arrow.