



# Colorsprees Users Manual

The Colorsprees LED bulb is a color tunable light bulb that may be controlled with the standard wall switch or wirelessly with an APP on a remote Smart device.

Colorsprees requires no additional components or hardware.

Simply screw in the lightbulb, download the free APP, and select from millions of color settings.

Range is up to 100 feet, and line of site is not required.

The Colorsprees LED bulbs come with the following features:

**Secure PIN Control** - Only those who know your PIN may control your bulbs.

**Two Internal Timers** - Programs when the Bulb should be ON and OFF

**Color Control** - Choose from million of colors - Color Changing Bulbs Only.

**Two Color Mode** - Alternates between Two Colors - Color Changing Bulbs Only

**Random Color Mode** - Alternates to Random Colors - Color Changing Bulbs Only

**Gradient Color Mode** - Slowly Rotates through the Colors - Color Changing Bulbs Only

## Manual Control

The light bulb screws into a standard light socket.

Once installed, a wall switch may control the light bulb.

The light bulb will turn ON and OFF to the last saved color and wireless control is not required.

## Factory Reset

If you wish to restore the Factory Settings for the bulb, turn it ON and OFF quickly three times with the wall switch.

When the Colorsprees bulb is factory RESET, it will turn YELLOW for RGB bulbs, and a SOFT WHITE for other bulbs.

Factory Reset will restore the Bulb PIN to the factory default. You will need to delete the bulb from your KNOWN list on the APP if you want to control it. This is because the Factory Reset bulb will not longer know your device.

## Remote Control

The Colorspre APP is free and available for both Android and iOS devices. The name of the APP is:

*Colorspre by TCP*

The APP requires Bluetooth 4.0 on your hardware. Please refer to your device documentation to ensure the APP is compatible. Generally, the APP stores will inform you prior to download of compatibility issues.

## Initial Use

1. Install the Colorspre LED bulb.

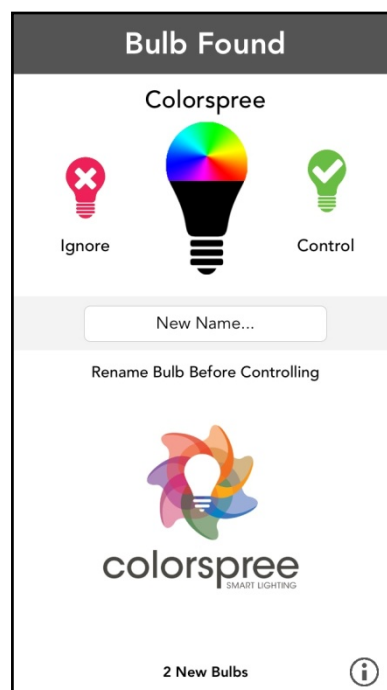
The bulb will function like a normal light bulb with a wall switch. You will know that the bulb is on because it is emitting light.

2. With the bulb powered ON, start the APP.

The first time you use the APP, you will need to select a language and enter a 4 digit PIN. The PIN is shared with a new light bulb so that others cannot control your light bulb. This is a one time process, and you may change it at a later time.

3. Control the Flashing Bulb

- i. When the APP finds a new Colorspre bulb, the bulb should start to flash.
- ii. Enter a new name for the bulb if you wish. You may change the name at a later time.
- iii. Select the Control button. Your device now will add this light bulb to your APP and you will be able to control it remotely.
- iv. You may also choose to Ignore a bulb if the APP finds a bulb and it is not yours or you do not wish to add it to your device.



## Additional Bulbs



The APP will remember up to 100 bulbs and new bulbs may be added at any time. It is a simple 3 step process: **Install / Scan / Control**

1. **Install** - Install the new bulb. Be sure it is receiving power.
2. **Scan** - Scan for the new bulb with the APP. You may do this by selecting the Scan button on the Home Page, or the Refresh button on the various bulb lists in the APP.
3. **Control** - When you see the bulb flashing, this lets you know your APP has found the bulb. Enter then name and select control as you did with your first bulb.

## Controlling Bulbs

The APP has many tips for the various features and controls. It also comes with common Questions and Answers for bulb control.

There is no limit to the number of devices that can use the Colorspreet APP. However, only one device may be connected to a bulb at the same time.

New bulbs learn the pin of your APP. You may control other bulbs with different PINS if you change your APP pin.

The various features and controls for the Colorspreet LED bulbs can be seen below:

### Home Screen

*Provides control of the various features of the bulb.*

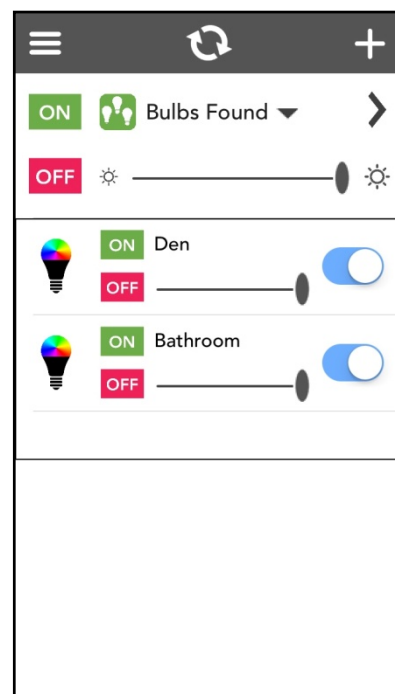
*Allows a user to select a group of bulbs to control - up to 10 bulbs per group.*

*A Scan button is provided to search for bulbs in the area.*

*Menu for accessing the Tools, Music, and Timer features of the APP and bulb.*

*Multiple types of bulbs may be controlled individually or as a group.*

*Create multiple groups. The active groups is indicated with a Green icon.*





## Menu

*From the Menu you may access the various features of a Colorspree bulb.*

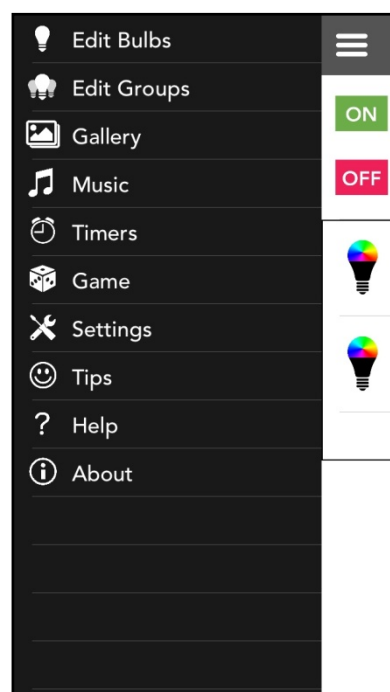
*The name assigned to each bulb may be changed with the Edit Bulbs selection.*

*Color may be selected from various images that come with the APP, or images on your device may be used.*

*The Music feature works with songs that are loaded on your device.*

*The classic Memory Game may be played with your Colorspree bulbs.*

*Tips provide an IN APP walkthrough of the various features.*



## Color Control - Tunable Light Bulbs

*Colorspree Tunable Light Bulbs adjust color based on light temperature.*

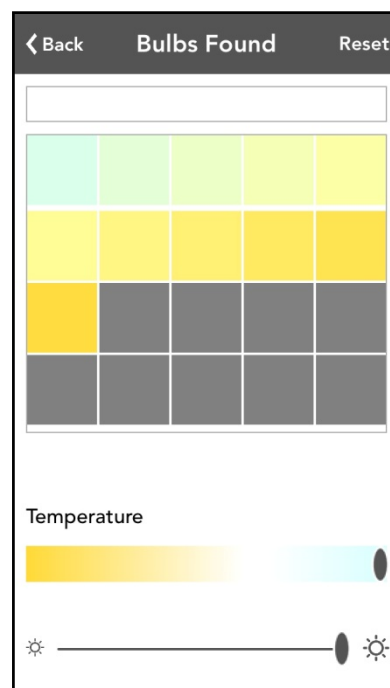
*Select a temperature from one of the Swatches or use the Temperature slider.*

*Swatches may be personalized by selecting a color from the slider, and then Holding a swatch for 2 seconds.*

*To reset the swatches, touch the Reset button.*

*The brightness for each temperature may be adjusted.*

*Only Tunable Light Bulbs respond to these commands.*



## Color Control - Limitless Color Bulbs

*Colorspre Limitless Color Bulbs allow for may be used as a White Light Bulb or Color Light Bulb.*

*Colors may be selected from a Gradient, RGB sliders, or from Swatches.*

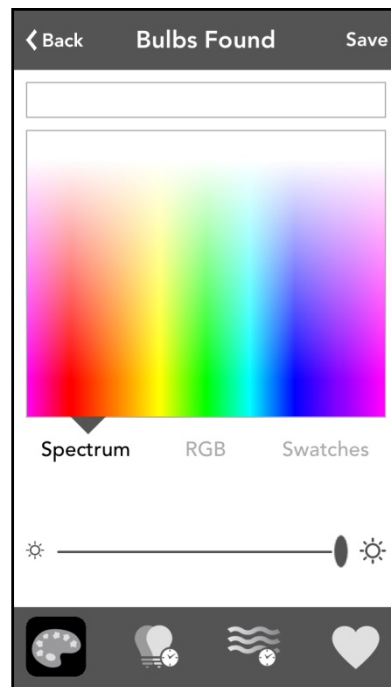
*Color Settings include:*

- Color - Millions of choices.*
- Two Color - Alternate between two colors.*
- Flow - Flow through all colors gradually.*
- Jump - Randomly Jump through colors.*

*Colors and Settings may be saved as favorites.*

*Brightness and Speed may be controlled for all settings.*

*Only Limitless Color Bulbs respond to these commands.*



## Additional Limitless Color Features

*The Colorspre APP comes with a Music player.*

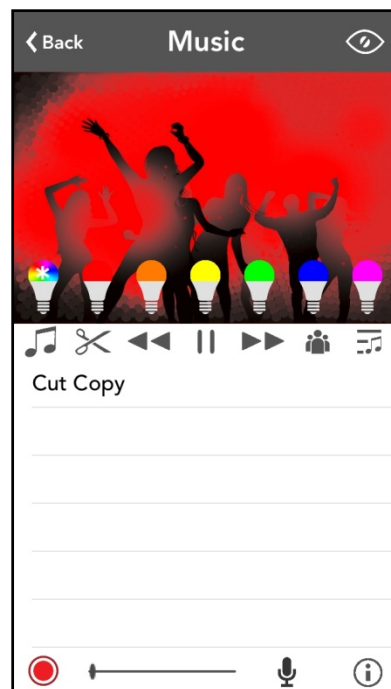
- Works with music loaded on your device.*
- The beat of the music triggers color changes.*
- The Microphone may be used to trigger color changes based on the sound around you.*
- Color changes are based on the song levels*

*The Colorspre APP comes with a Memory game.*

- The bulb will flash a color pattern that needs to be remembered.*
- Pass the device around. The person who can't remember the pattern loses.*

*The Colorspre APP comes with a Gallery that can be used to select a color.*

*These features only work with Limitless Color bulbs.*



## Timers

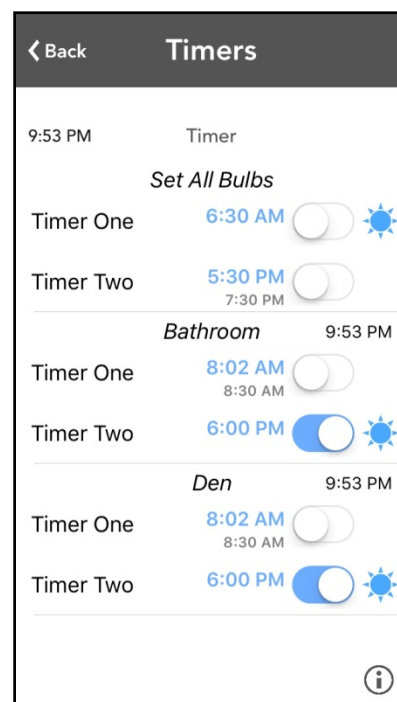
*Each Colorspree bulb comes with two internal timers.*

*Once the timers are set, the device does not need to be connected to the bulb.*

*The timer will turn on to whatever state the bulb is in when the timer is set.*

*If the bulb stops receiving POWER, the timer will need to be sent once again to the bulb.*

*Touch a Time to change the settings for the bulb.*



## Settings

### Quick Scan

*Scan only for KNOWN bulbs that you have already installed.*

*This feature must be turned off if you are installing NEW bulbs.*

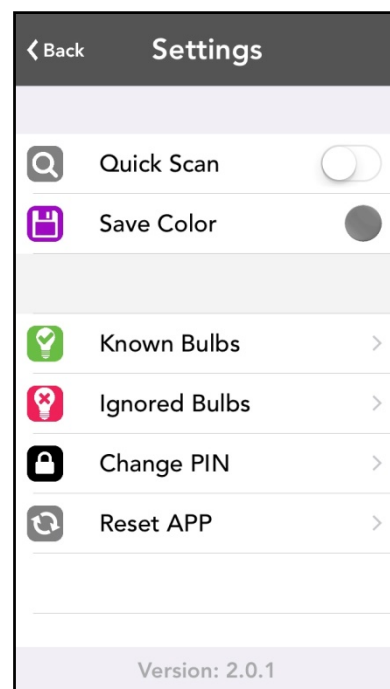
### Save Color

*SAVE the current color to connected bulbs.*

*The saved color is restored when a wall switch is used - i.e. White.*

*Manage KNOWN and IGNORED bulbs.*

*Change the APP pin if you wish to control bulbs with a different PIN.*





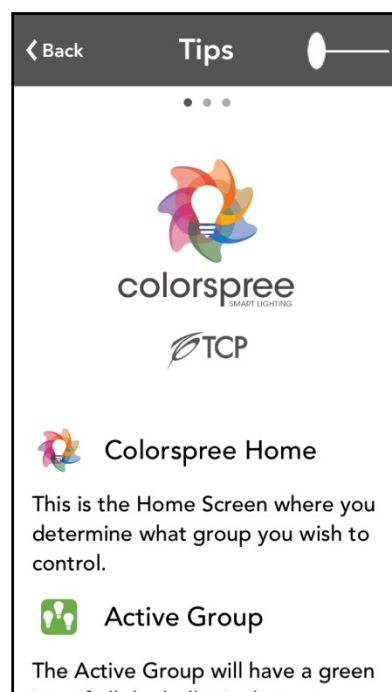
## Tips

*Tips are also provided for the various features and functions while using the App.*

*Swipe RIGHT or LEFT to view different screens.*

*Scroll UP and DOWN to review the tips.*

*Review the HELP section in the Menu for frequent questions if the Tips do not provide an answer.*



## Colorspre Specifications

Range is up to 100 feet.

Device Compatibility:

Android Hardware	iOS Hardware
Devices with Bluetooth 4.0	iPhone 4s or greater
Android Software	iPad 3 <sup>rd</sup> generation or greater
4.4 or greater	iPod Touch
5.0 or greater recommended	iOS 6.0 or greater







## FCC Compliance Statement

This device complies with part 15 of the FCC Rules. Operation is subject to the following two conditions:

1. This device may not cause harmful interference, and
2. This device must accept any interference received, including interference that may cause undesired operation.

## FCC WARNING

This equipment has been tested and found to comply with the limits for a Class B digital device, pursuant to Part 15 of the FCC Rules. These limits are designed to provide reasonable protection against harmful interference in a residential installation.

This equipment generates, uses and can radiate radio frequency energy and, if not installed and used in accordance with the instructions, may cause harmful interference to radio communications. However, there is no guarantee that interference will not occur in a particular installation. If this equipment does cause harmful interference to radio or television reception, which can be determined by turning the equipment off and on, the user is encouraged to try to correct the interference by one or more of the following measures:

- Reorient or relocate the receiving antenna.
- Increase the separation between the equipment and the receiver.
- Connect the equipment into an outlet different from that to which the receiver is connected.
- Consult the dealer or an experienced radio/TV technician for help

The Federal Communications Commission warns that changes or modifications of the unit not expressly approved by the party responsible for compliance could void the user's authority to operate the equipment.

**To comply with RF exposure limits for general population / uncontrolled exposure, the antenna(s) used for this transmitter must be installed to provide a separation distance of at least 20 cm from all persons and must not be co-located or operating in conjunction with any other antenna or transmitter**

*This device complies with Industry Canada licence-exempt RSS standard(s). Operation is subject to the following two conditions: (1) this device may not cause interference, and (2) this device must accept any interference, including interference that may cause undesired operation of the device.*

*Le présent appareil est conforme aux CNR d'Industrie Canada applicables aux appareils radio exempts de licence. L'exploitation est autorisée aux deux conditions suivantes : (1) l'appareil ne doit pas produire de brouillage, et (2) l'appareil doit accepter tout brouillage radioélectrique subi, même si le brouillage est susceptible d'en compromettre le fonctionnement*