

BLUEWAVE

GUARDIAN™

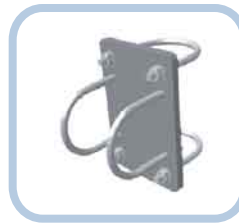
BGO902G

Previously BWM9006

902-928 MHz

ANTENNA SPECIFICATIONS

Bottom Operating Frequency (MHz VSWR ≤ 1.5)	902
Top Operating Frequency (MHz VSWR ≤ 1.5)	928
Nominal Gain (dBd)	6
Horizontal Beamwidth (Deg-3dB)	360
Vertical Beamwidth (Deg-3dB)	15
Power Rating (W)	200
Length (inches)	71.5
Width (inches)	2.38
Antenna Weight (lbs.)	6
Cross Sectional Area (Max. ft ²)	1.02
Lateral Thrust at 100mph (lbs.)	25.5
Rated Wind Velocity (mph)	125
Rated Wind Velocity with 1/2" Radial Ice (mph)	100



Includes mounting hardware
BWC1005



BGO902G contains an integrated N-Female connector.

The **BGO902G** has been designed to provide omni directional performance in the 902-928 MHz frequency band. Antenna base is 6061-T6 aluminum to provide a solid secure mount for the N-Female termination. The **BGO902G** is fully enclosed in a UV-stable all season radome.

7015 - 8 Street N.E. CALGARY, AB CANADA T2E 8A2

PHONE: 403.291.4422 FAX: 403.219.3644

TOLL FREE: 1.888.334.9244

EMAIL: sales@bluewaveantenna.com

WWW.BLUEWAVEANTENNA.COM

© Bluewave Antenna Systems Ltd.

BLUEWAVETM

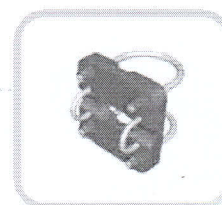
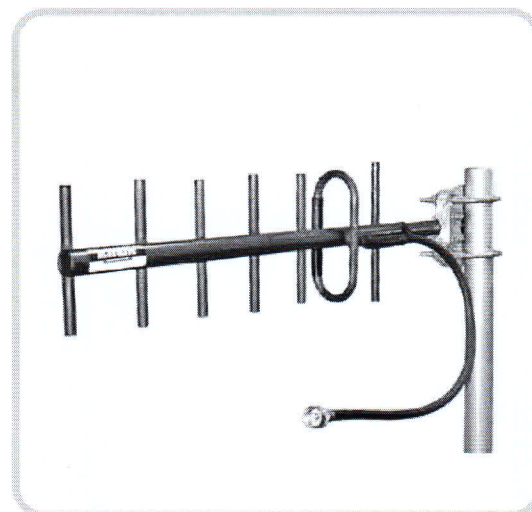
MARATHONTM

BMY890K
Previously BW947Y-2

890-960 MHz

ANTENNA SPECIFICATIONS

Bottom Operating Frequency (MHz VSWR \leq 1.5)	890
Top Operating Frequency (MHz VSWR \leq 1.5)	960
Nominal Gain (dBd, dBi > 1GHz)	10
Horizontal Beamwidth (Deg-3dB)	56
Vertical Beamwidth (Deg-3dB)	46
Front to Back Ratio (dB)	20
Power Rating (W)	200
Length (inches)	6.8
Width (inches)	2.38
Antenna Weight (lbs.)	2
Cross Sectional Area (Max. ft ²)	0.24
Lateral Thrust at 100mph (lbs.)	6
Rated Wind Velocity (mph)	125
Rated Wind Velocity with 1/2" Radial Ice (mph)	120



Includes mounting hardware
BWC1001

BMY890K5502N1 contains 2' of RG213/U and N-Male crimp connector.

Other options available.

Cable Type: Your choice of RG213U or BW400.

Cable Length: Up to 50'.

Connector: N, BNC, TNC and more.

The BMY890K has been engineered to meet the requirements of a high gain, broadband, premium quality antenna. This antenna provides 10 dBd gain and operates in the 890-960 MHz range. The BMY890K is manufactured using high strength 6061-T6 Aluminum to withstand heavy ice, high wind and other harsh conditions. Our patented dipole design has an integral feed line and is welded to the boom for extra strength and electrical conductivity. This also eliminates misalignment or fastener problems. The entire antenna is anodized for appearance and corrosion resistance. A heavy duty clamp is supplied which easily permits horizontal or vertical polarization. The BMY890K is available with RG213U and N-Male Crimp connector. Other options available by special order.

7015 - 8 Street N.E. CALGARY, AB CANADA T2E 8A2
PHONE: 403.291.4422 FAX: 403.219.3644
TOLL FREE: 1.888.334.9244
EMAIL: sales@bluewaveantenna.com

WWW.BLUEWAVEANTENNA.COM

© Bluewave Antenna Systems Ltd.

BLUEWAVETM

MARATHONTM

BMO902J

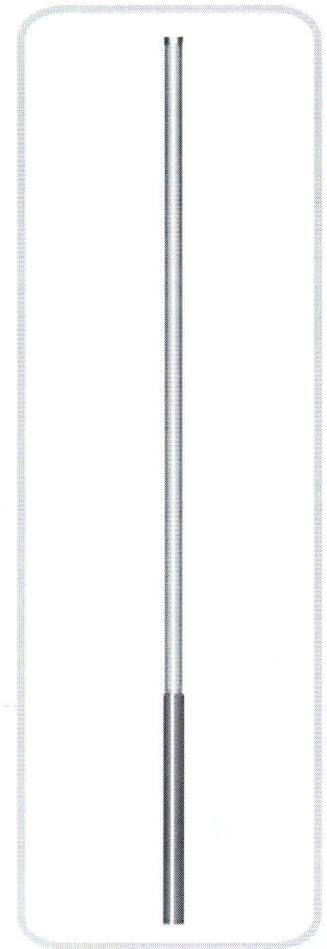
Previously BW9009

902-928 MHz

ANTENNA SPECIFICATIONS

Bottom Operating Frequency (MHz VSWR \leq 1.5)	902
Top Operating Frequency (MHz VSWR \leq 1.5)	928
Nominal Gain (dBd)	9
Horizontal Beamwidth (Deg-3dB)	360
Vertical Beamwidth (Deg-3dB)	5
Power Rating (W)	200
Length (inches)	120.5
Width (inches)	2.5
Antenna Weight (lbs.)	12.5
Cross Sectional Area (Max. ft ²)	1.9
Lateral Thrust at 100mph (lbs.)	47.5
Rated Wind Velocity (mph)	120
Rated Wind Velocity with 1/2" Radial Ice (mph)	90

BMO902J contains an integrated N-Female connector.



The BMO902J has been designed to provide omni-directional coverage in the 902-928 MHz frequency band. Antenna base is anodized 6061-T6 Aluminum to provide a solid, secure mount for the N-Female termination. The BMO902J is fully encased in a UV-stable, heavy-duty fiberglass radome to withstand harsh environmental conditions.

7015 - 8 Street N.E. CALGARY, AB CANADA T2E 8A2
PHONE: 403.291.4422 FAX: 403.219.3644
TOLL FREE: 1.888.334.9244
EMAIL: sales@bluwaveantenna.com

WWW.BLUEWAVEANTENNA.COM

© Bluwave Antenna Systems Ltd.

BLUEWAVE

GUARDIAN™

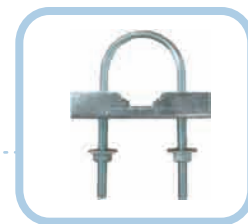
BGY890K

Previously BMW947Y-2

890-960 MHz

ANTENNA SPECIFICATIONS

Bottom Operating Frequency (MHz VSWR \leq 1.5)	890
Top Operating Frequency (MHz VSWR \leq 1.5)	960
Nominal Gain (dBd, dBi > 1GHz)	10
Horizontal Beamwidth (Deg-3dB)	56
Vertical Beamwidth (Deg-3dB)	46
Front to Back Ratio (dB)	20
Power Rating (W)	200
Length (inches)	24
Width (inches)	6.8
Antenna Weight (lbs.)	2
Cross Sectional Area (Max. ft ²)	0.24
Lateral Thrust at 100mph (lbs.)	6
Rated Wind Velocity (mph)	125
Rated Wind Velocity with 1/2" Radial Ice (mph)	120



Includes mounting hardware
BWC1022

BGY890K Comes with 2' RG213U feed line with an N-type Female connector.

The **BGY890K** has been engineered to provide high gain broadband performance between the frequencies of 890-960 MHz. Solid 3/8" Aluminum elements complement the fully welded dipole on the boom. The black powder coat **BGY890K** comes with an integral low loss 2' RG213U feed line with a standard N-Female connector. High strength mounting clamp is supplied for vertical or horizontal polarization.

7015 - 8 Street N.E. CALGARY, AB CANADA T2E 8A2
PHONE: 403.291.4422 FAX: 403.219.3644
TOLL FREE: 1.888.334.9244
EMAIL: sales@bluwaveantenna.com

WWW.BLUEWAVEANTENNA.COM

© Bluwave Antenna Systems Ltd.