

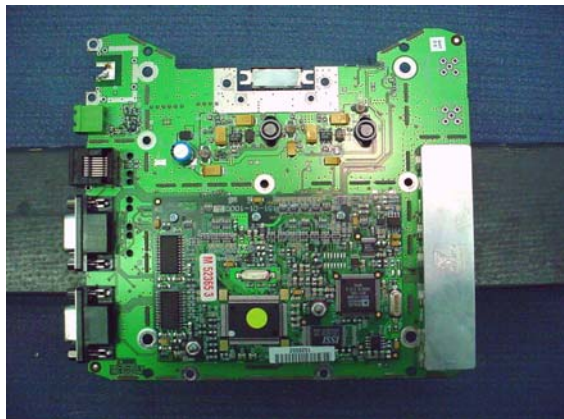
# EMC Technologies (NZ) Ltd

Test Report No 40939.3

Report date: 5<sup>th</sup> October 2004

---

## Remote half duplex internal views



---

### **EMC Technologies (NZ) Ltd**

STREET ADDRESS - 47 MacKelvie Street, Grey Lynn, Auckland, New Zealand

POSTAL ADDRESS - PO Box 68 307, Newton, Auckland, New Zealand

**This report may not be reproduced except in full**

Telephone: +64 9 360 0862 Fax: +64 9 360 0861

E-mail: [auckland@ihug.co.nz](mailto:auckland@ihug.co.nz)

Web Site: [www.emctech.com.au](http://www.emctech.com.au)

Page 23 of 24

# EMC Technologies (NZ) Ltd

Test Report No 40939.3

Report date: 5<sup>th</sup> October 2004

---

## Remote full duplex internal views



---

### EMC Technologies (NZ) Ltd

STREET ADDRESS - 47 MacKelvie Street, Grey Lynn, Auckland, New Zealand

POSTAL ADDRESS - PO Box 68 307, Newton, Auckland, New Zealand

**This report may not be reproduced except in full**

Telephone: +64 9 360 0862 Fax: +64 9 360 0861

E-mail: [aucklab@ihug.co.nz](mailto:aucklab@ihug.co.nz)

Web Site: [www.emctech.com.au](http://www.emctech.com.au)

Page 25 of 24