

APPENDIX 3: Photographs of test setup

Radiated Emission

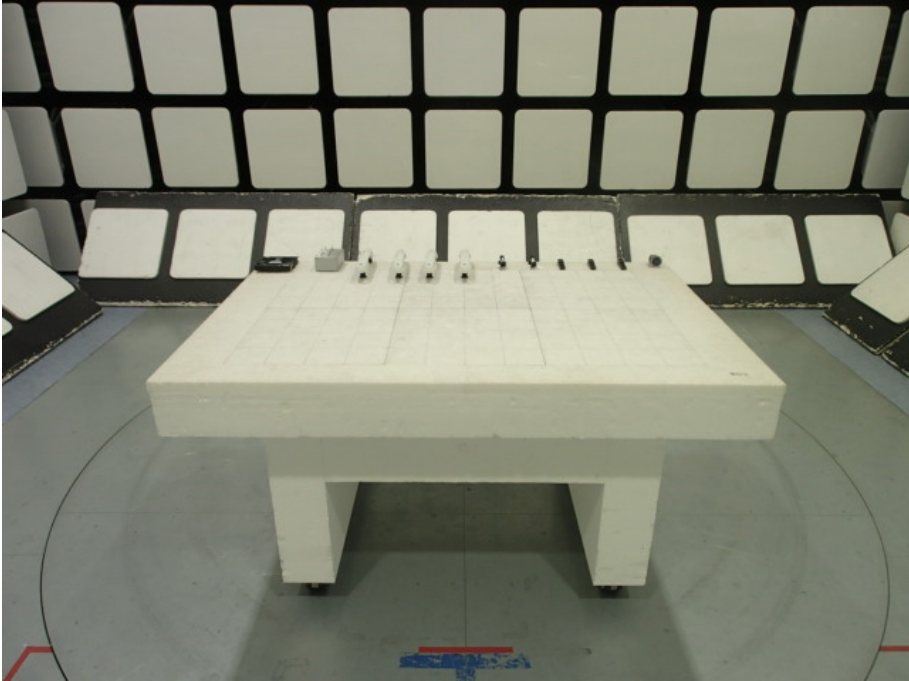


Photo 1



Photo 2

Worst Case Position

ECU
Below 30 MHz: X-axis
Above 30 MHz: Horizontal: X-axis /
Vertical: X-axis

X-axis



Y-axis

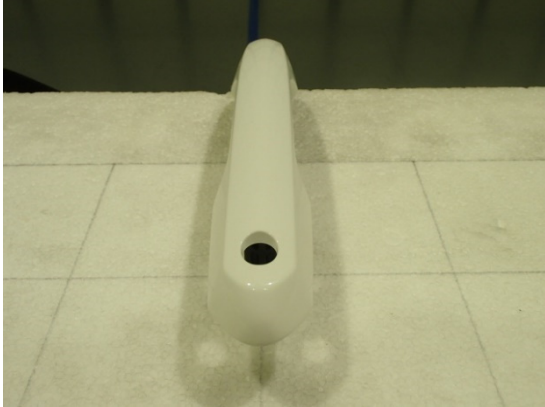


Z-axis



Outside Antenna
Below 30 MHz: X-axis
Above 30 MHz: Horizontal: X-axis /
Vertical: X-axis

X-axis



Y-axis



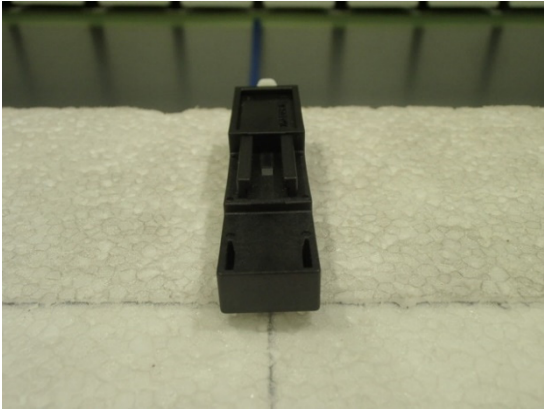
Z-axis



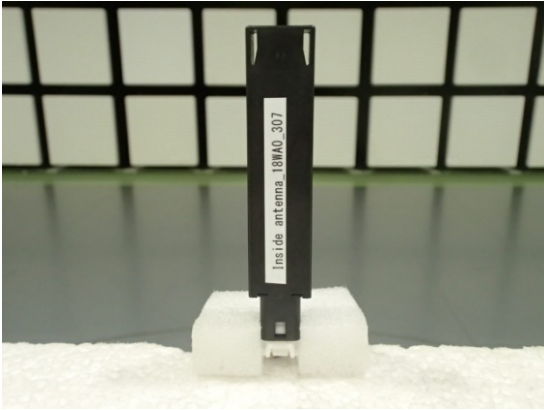
Worst Case Position

Inside Antenna
Below 30 MHz
X-axis
Above 30 MHz
Horizontal: X-axis / Vertical: X-axis

X-axis



Y-axis

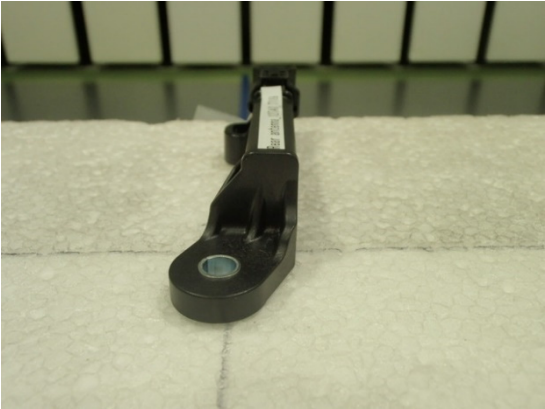


Z-axis

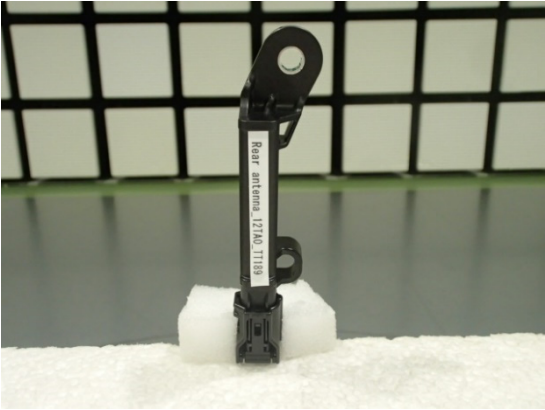


Rear Antenna
Below 30 MHz
X-axis
Above 30 MHz
Horizontal: X-axis / Vertical: X-axis

X-axis



Y-axis



Z-axis



Worst Case Position

Immobilizr Antenna

Below 30 MHz

X-axis

Above 30 MHz

Horizontal: X-axis / Vertical: X-axis

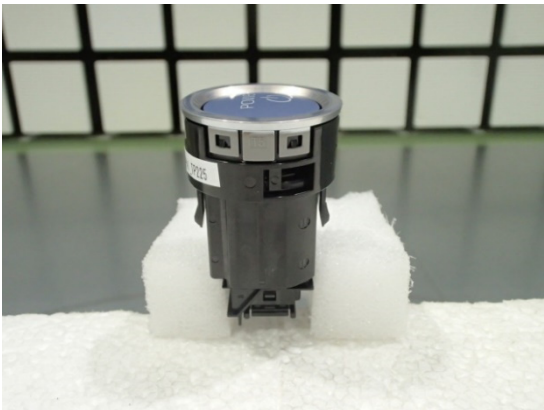
X-axis



Y-axis



Z-axis



Worst case position



With transponder key attached



Without transponder key attached (Worst)

End of Report