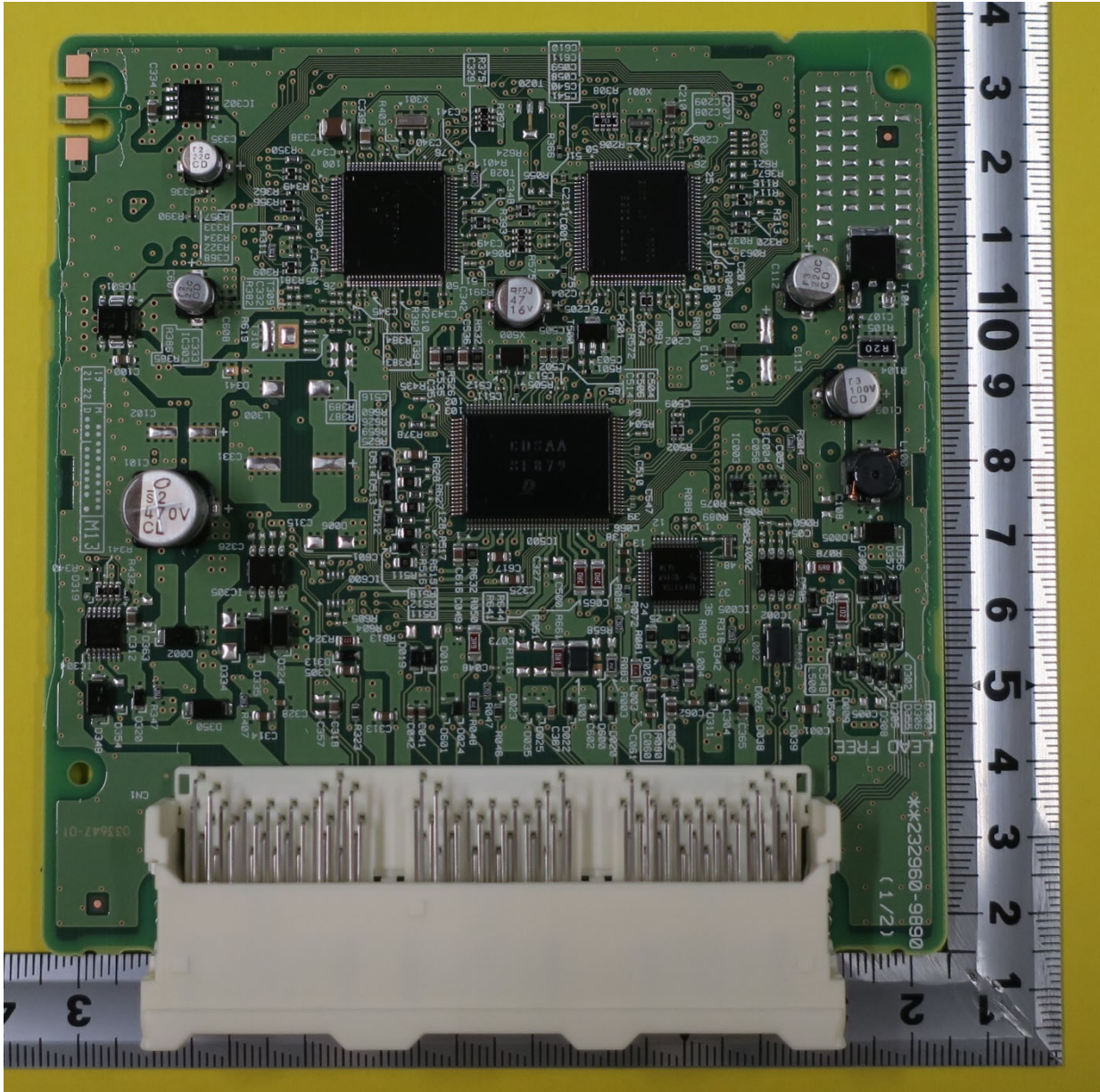


TOYOTA MOTOR CORPORATION  
Smart LF oscillator  
FCC ID: NI4TMLF19D-3  
IC Number: 2842A-TMLF19D3

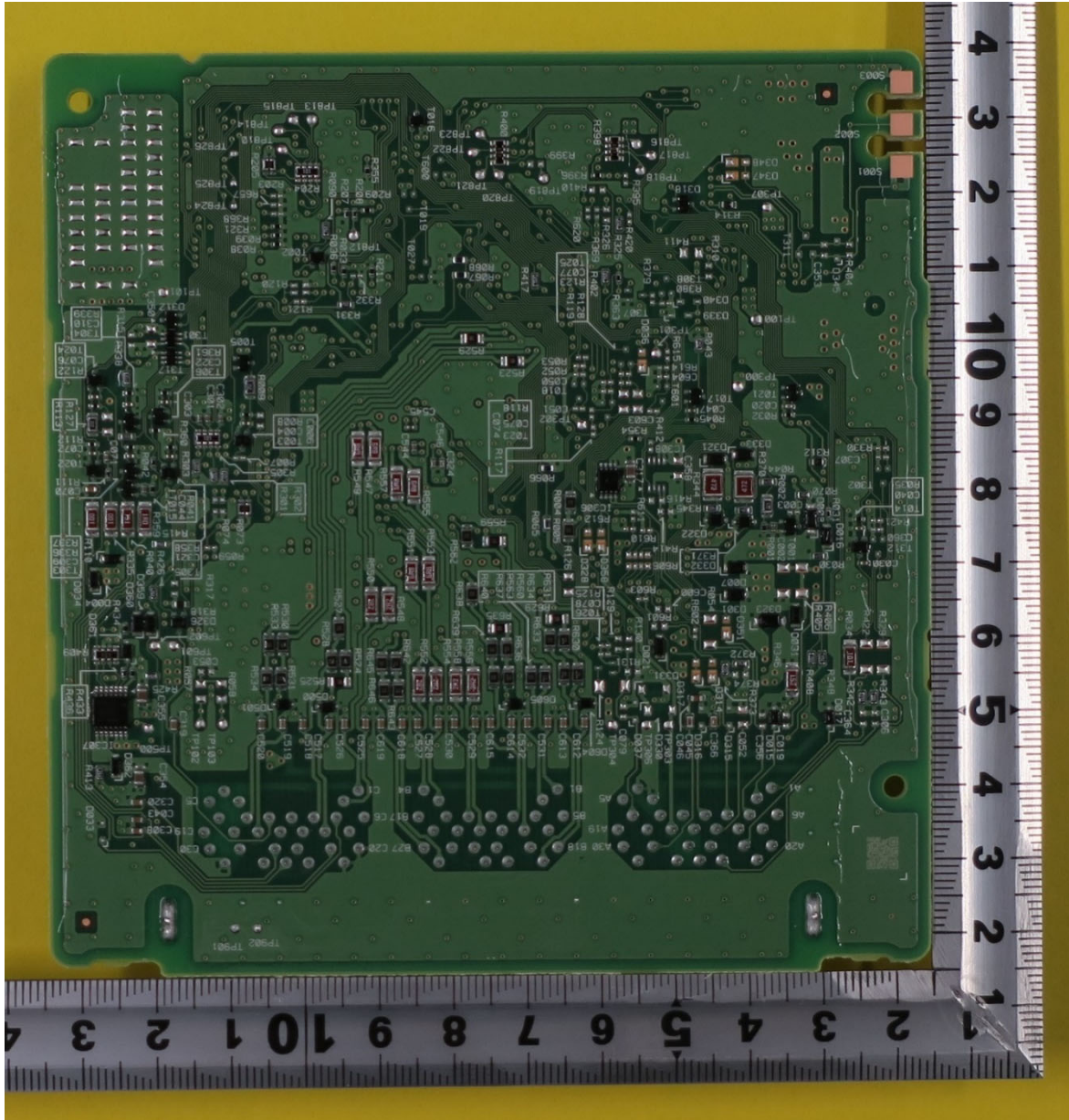
Internal Photos: Smart ECU 1/2



Front

TOYOTA MOTOR CORPORATION  
Smart LF oscillator  
FCC ID: NI4TMLF19D-3  
IC Number: 2842A-TMLF19D3

Internal Photos: Smart ECU 2/2



Rear

TOYOTA MOTOR CORPORATION  
Smart LF oscillator  
FCC ID: NI4TMLF19D-3  
IC Number: 2842A-TMLF19D3

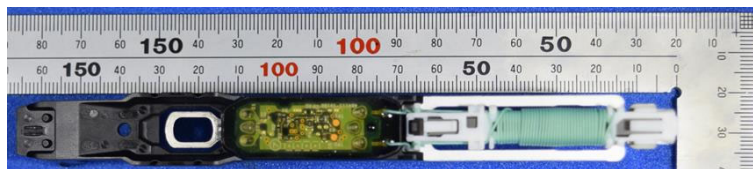
Internal Photos: Outside antenna 1/2



Front



Rear



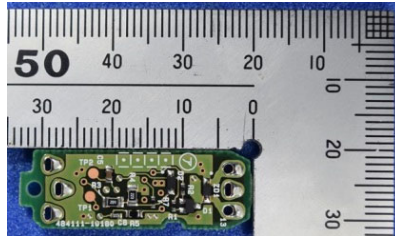
Top



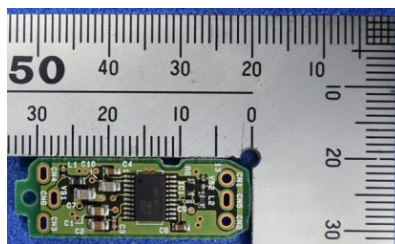
Bottom

TOYOTA MOTOR CORPORATION  
Smart LF oscillator  
FCC ID: NI4TMLF19D-3  
IC Number: 2842A-TMLF19D3

Internal Photos: Outside antenna 2/2



Top



Bottom

TOYOTA MOTOR CORPORATION  
Smart LF oscillator  
FCC ID: NI4TMLF19D-3  
IC Number: 2842A-TMLF19D3

Internal Photos: Inside antenna



Front



Rear



Top

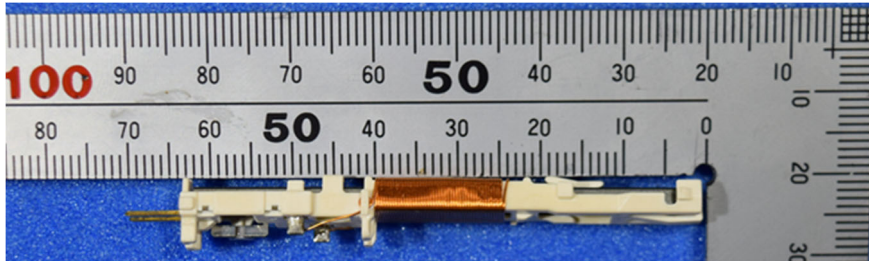


Bottom

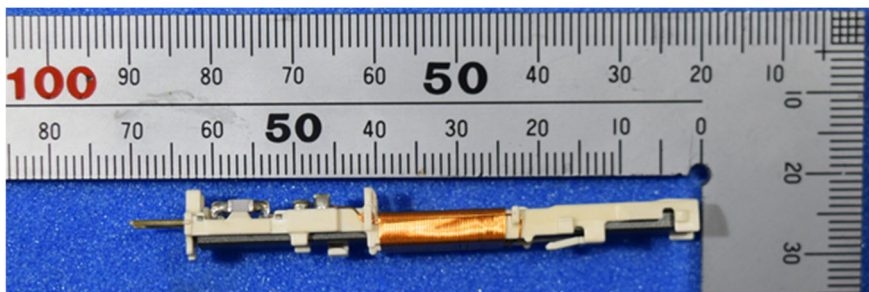
Note : Inside antenna does not have any PCB.

TOYOTA MOTOR CORPORATION  
Smart LF oscillator  
FCC ID: NI4TMLF19D-3  
IC Number: 2842A-TMLF19D3

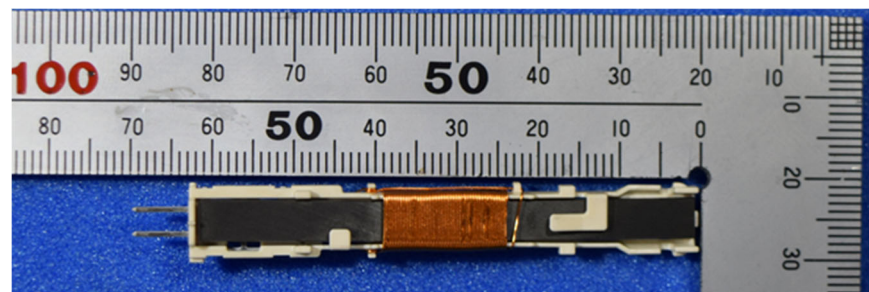
Internal Photos: Rear antenna



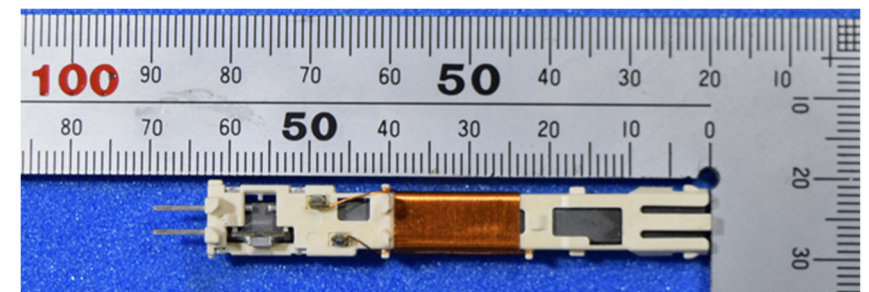
Front



Rear



Top

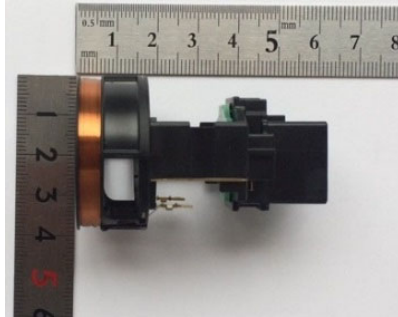


Bottom

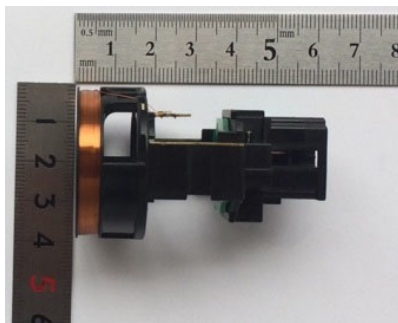
Note : Rear antenna does not have any PCB.

TOYOTA MOTOR CORPORATION  
Smart LF oscillator  
FCC ID: NI4TMLF19D-3  
IC Number: 2842A-TMLF19D3

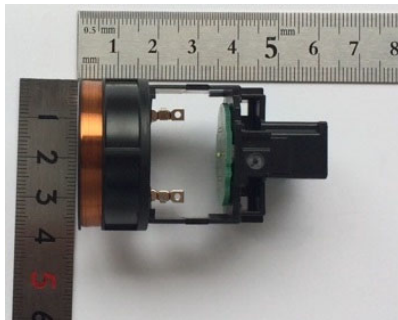
Internal Photos: Immobilizer antenna 1/2



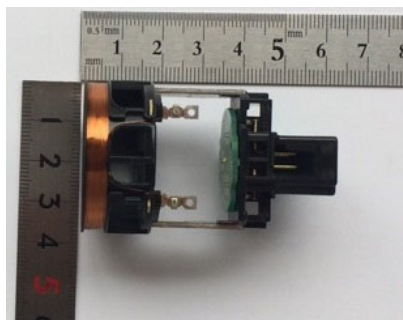
Front



Rear



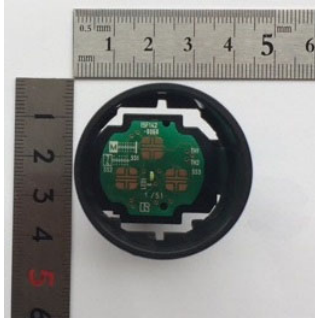
Top



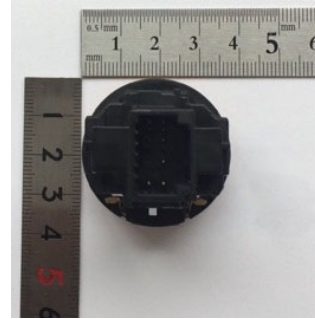
Bottom

**TOYOTA MOTOR CORPORATION**  
**Smart LF oscillator**  
**FCC ID: NI4TMLF19D-3**  
**IC Number: 2842A-TMLF19D3**

Internal Photos: Immobilizer antenna 2/2



Left



Right

Note : Immobilizer antenna has the PCB, but it is not used for an antenna circuit.