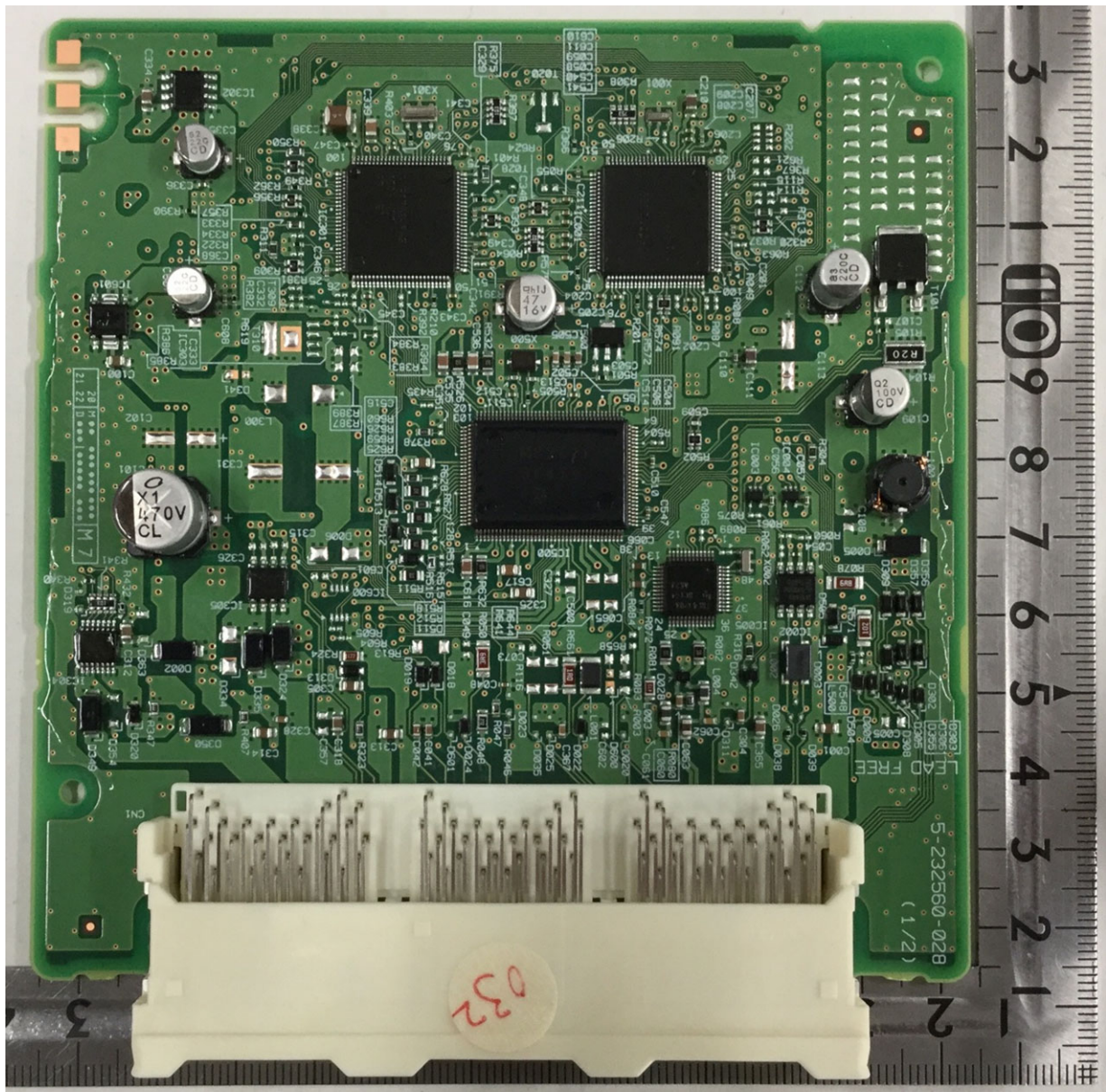


Toyota Motor Corporation
Smart LF oscillator
Model: TMLF19D-1

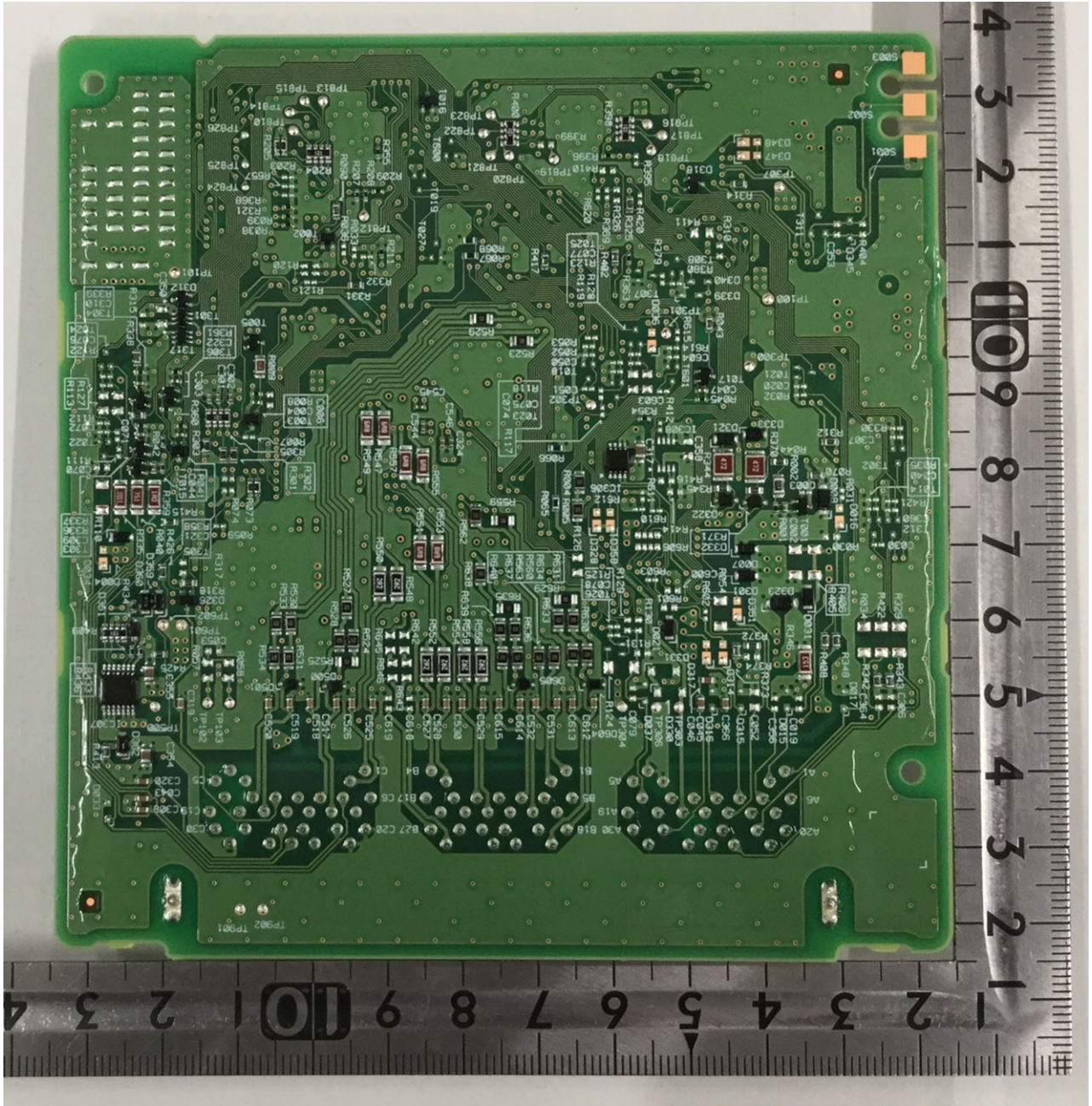
Internal Photos: Smart ECU 1/2



Front

Toyota Motor Corporation
Smart LF oscillator
Model: TMLF19D-1

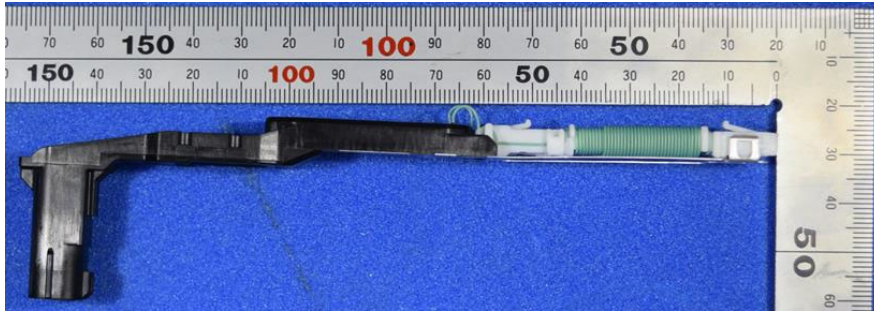
Internal Photos: Smart ECU 2/2



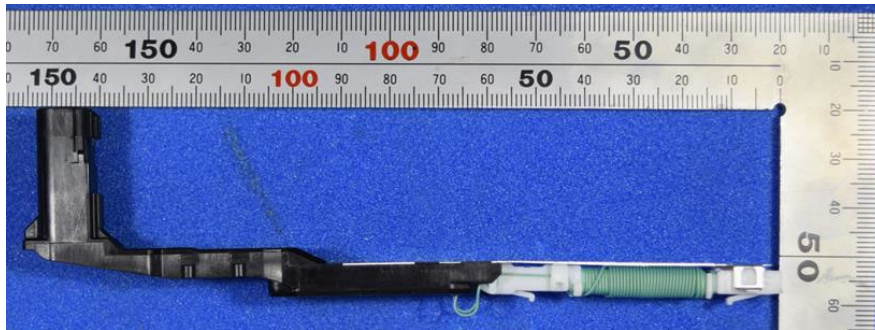
Rear

Toyota Motor Corporation
Smart LF oscillator
Model: TMLF19D-1

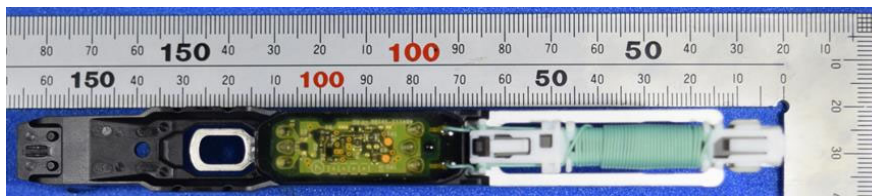
Internal Photos: Outside antenna 1/2



Front



Rear



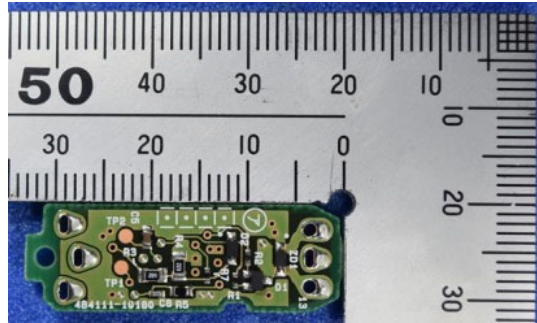
Top



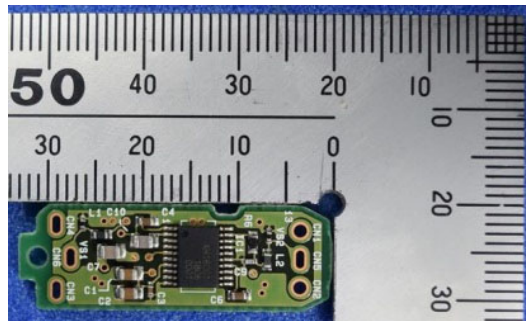
Bottom

Toyota Motor Corporation
Smart LF oscillator
Model: TMLF19D-1

Internal Photos: Outside antenna 2/2



Top



Bottom

Toyota Motor Corporation
Smart LF oscillator
Model: TMLF19D-1

Internal Photos: Inside antenna



Front



Rear



Top



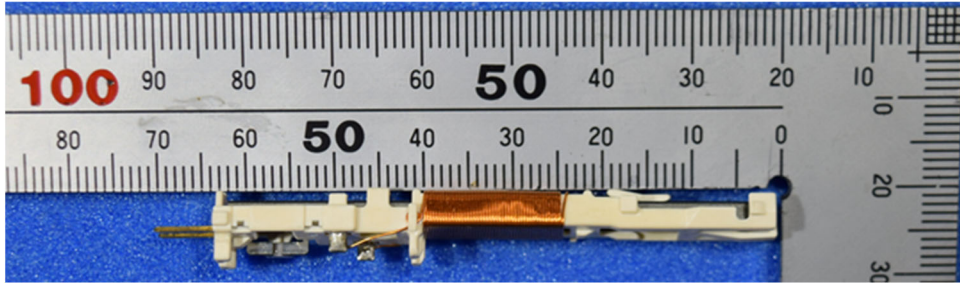
Bottom

Note :

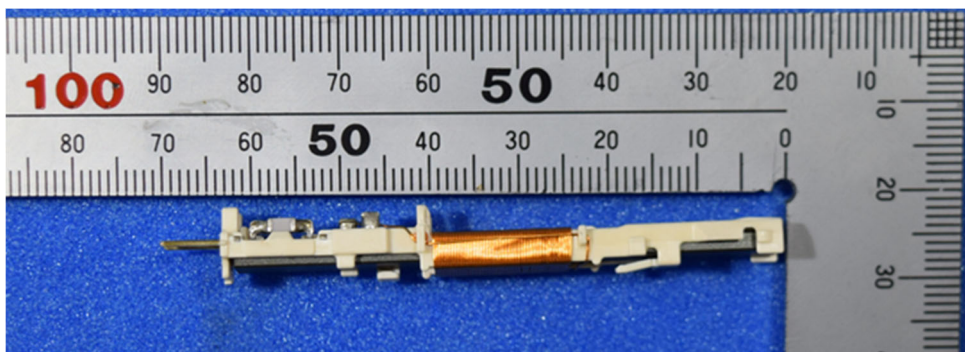
Inside antenna does not have any PCB.

Toyota Motor Corporation
Smart LF oscillator
Model: TMLF19D-1

Internal Photos: Rear antenna 1/2



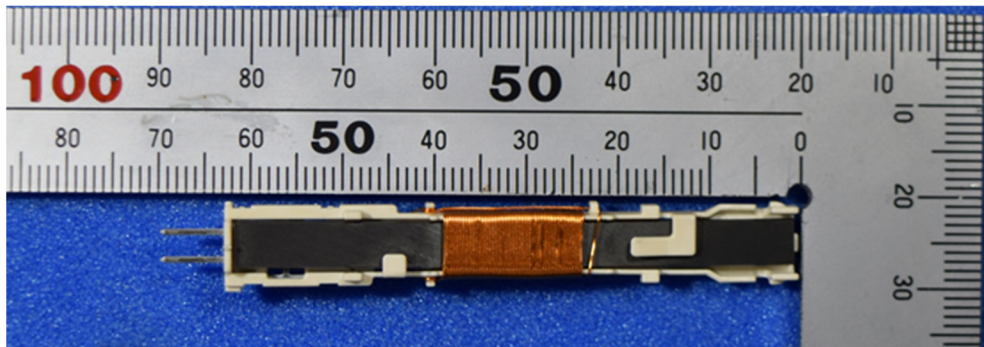
Front



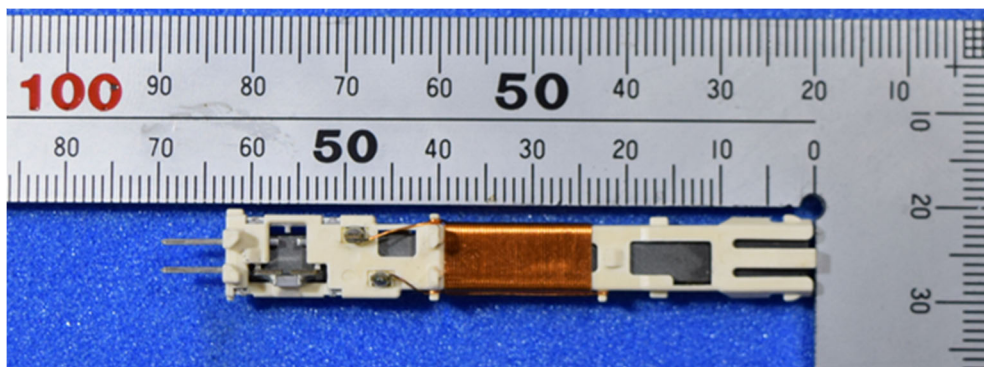
Rear

Toyota Motor Corporation
Smart LF oscillator
Model: TMLF19D-1

Internal Photos: Rear antenna 2/2



Top



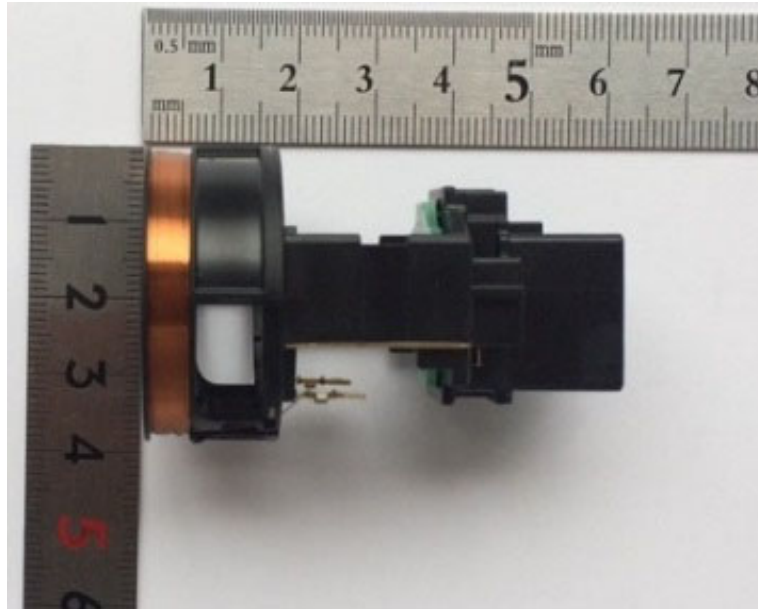
Bottom

Note :

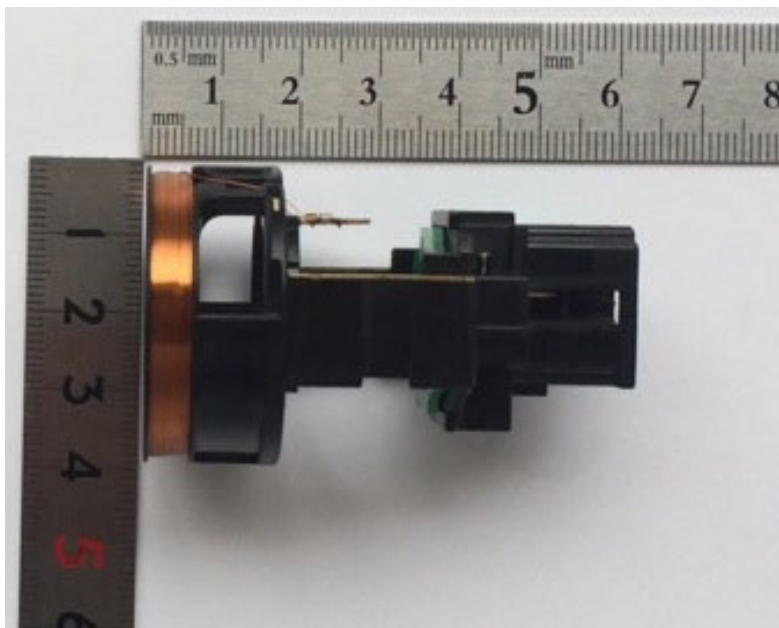
Rear antenna does not have any PCB.

Toyota Motor Corporation
Smart LF oscillator
Model: TMLF19D-1

Internal Photos: Immobilizer antenna 1/3



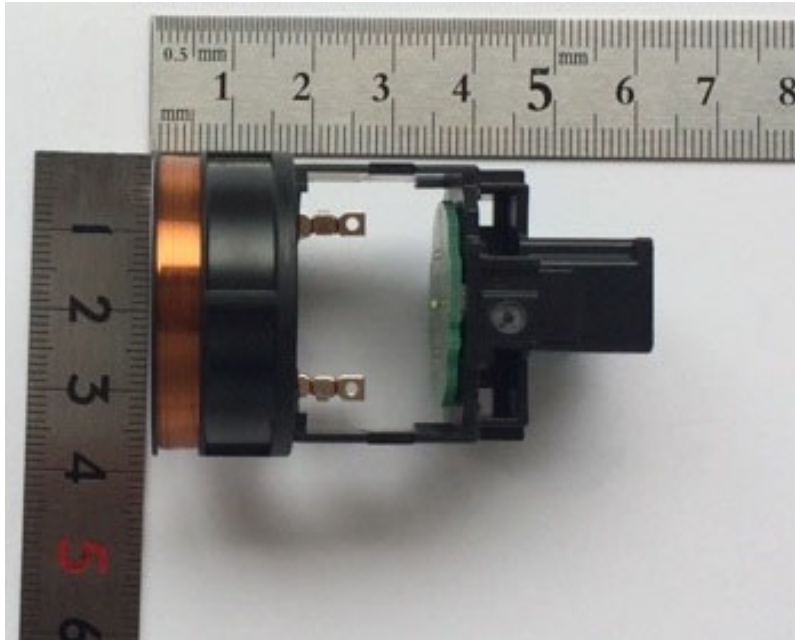
Front



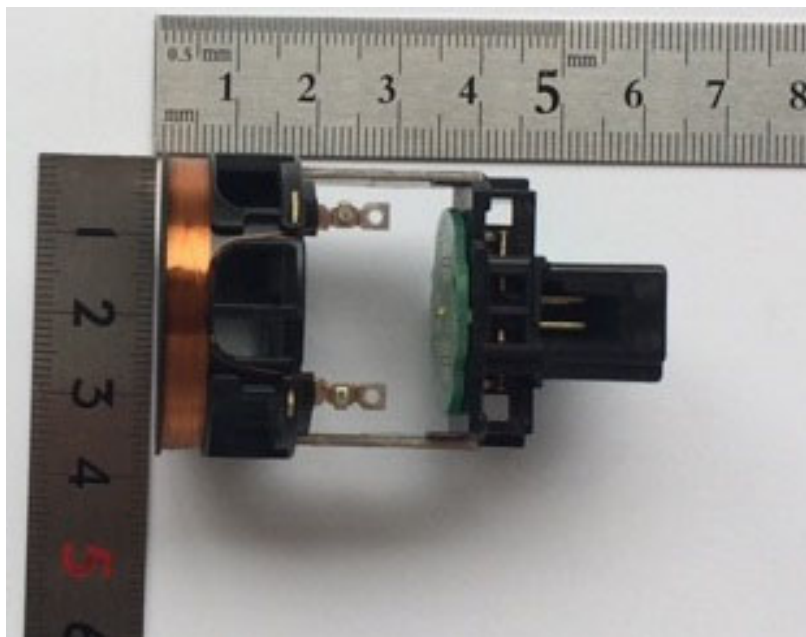
Rear

Toyota Motor Corporation
Smart LF oscillator
Model: TMLF19D-1

Internal Photos: Immobilizer antenna 2/3



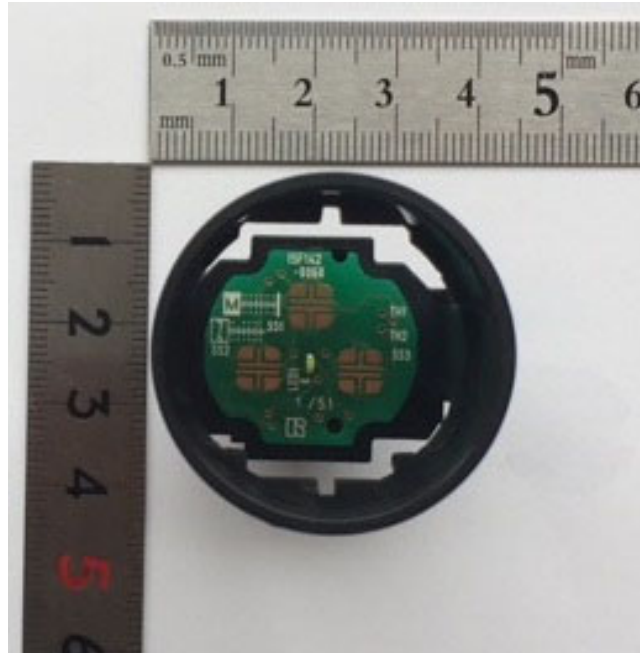
Top



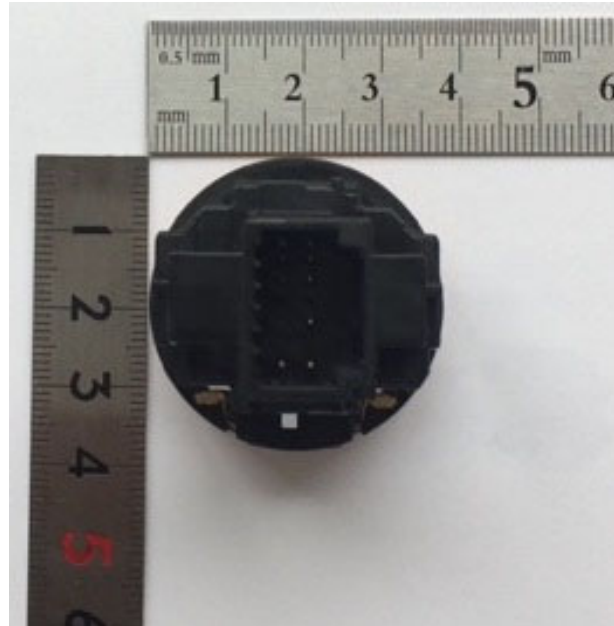
Bottom

Toyota Motor Corporation
Smart LF oscillator
Model: TMLF19D-1

Internal Photos: Immobilizer antenna 3/3



Left



Right

Note :

Immobilizer antenna has the PCB, but it is not used for an antenna circuit.