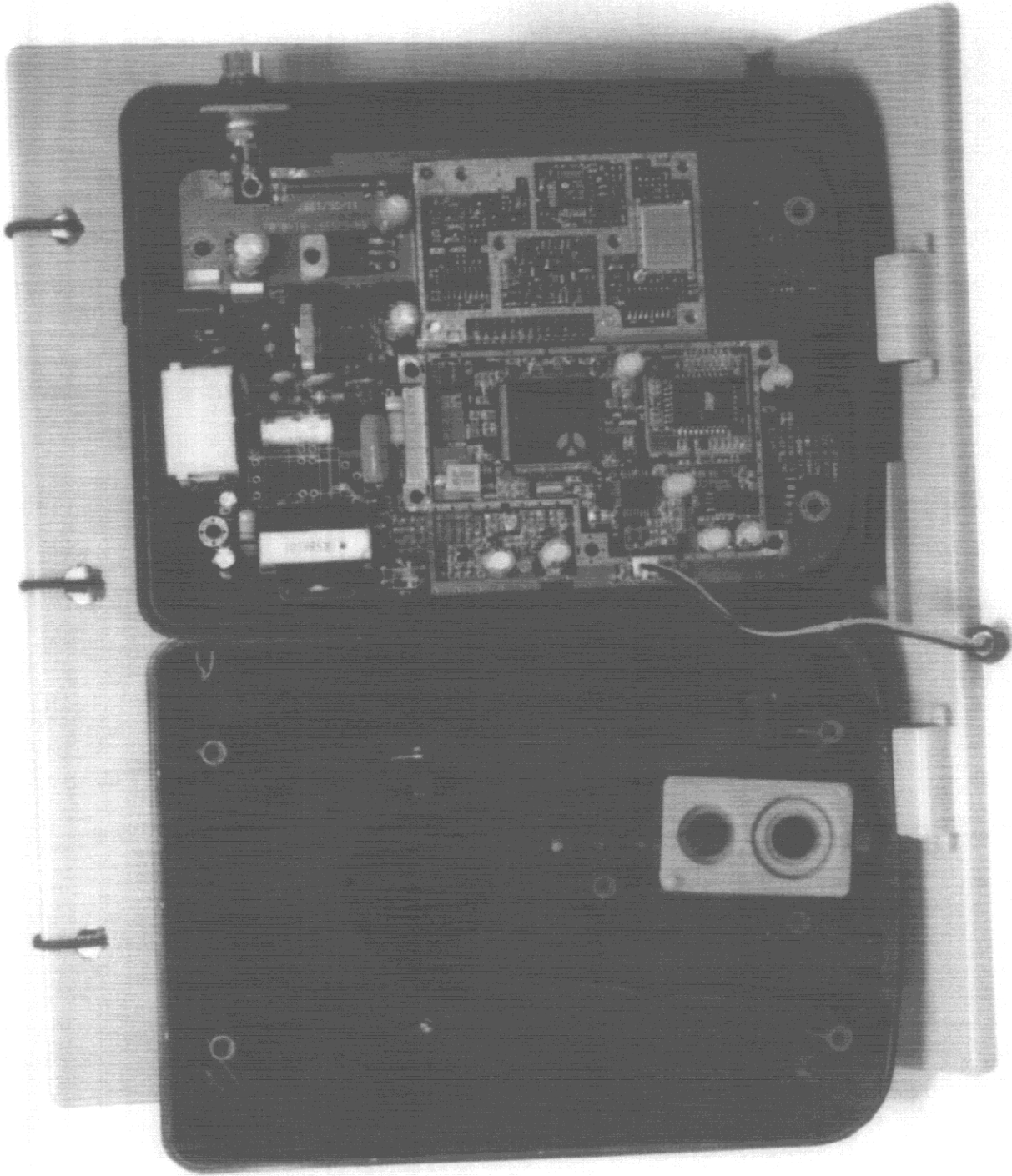
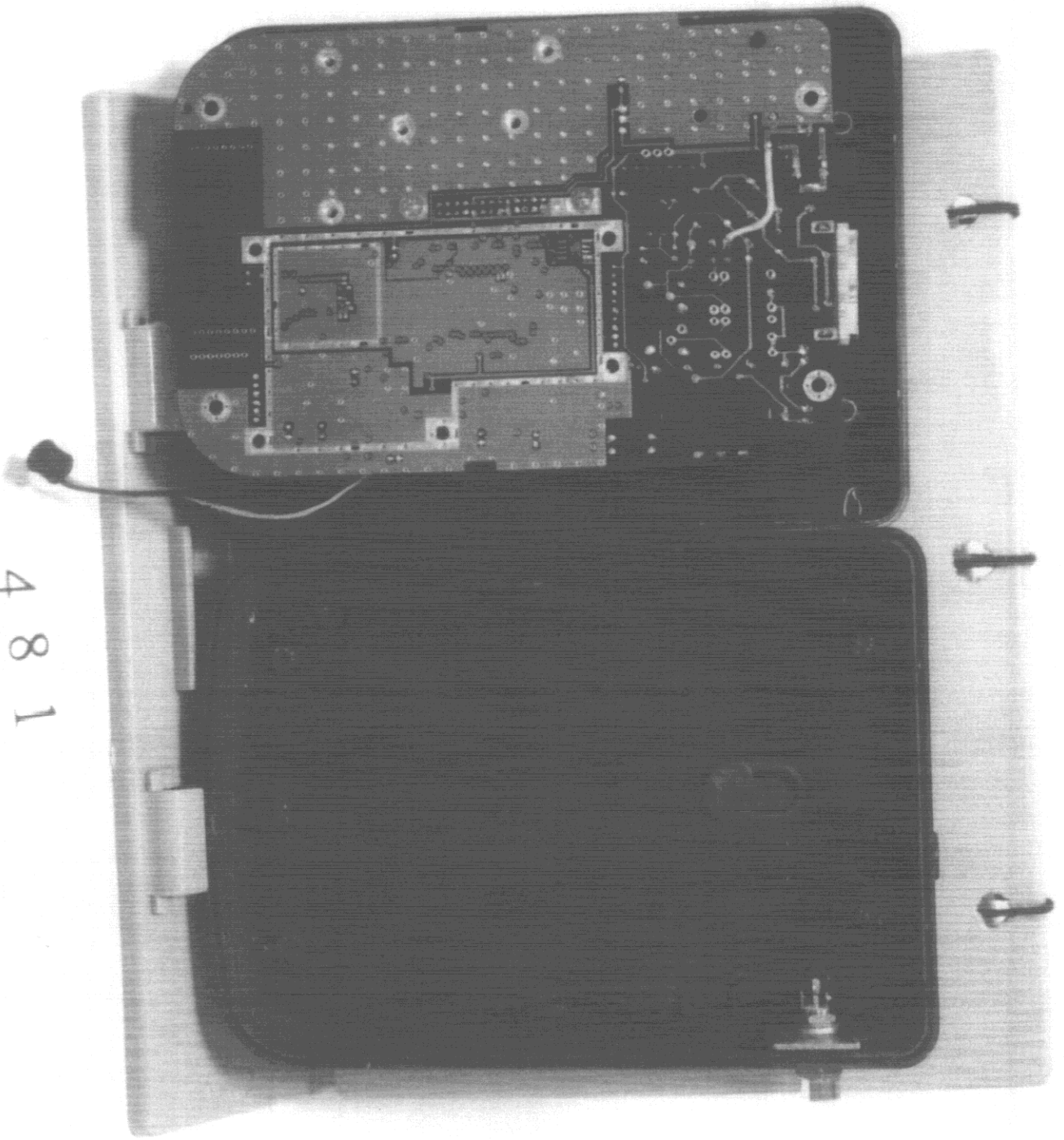


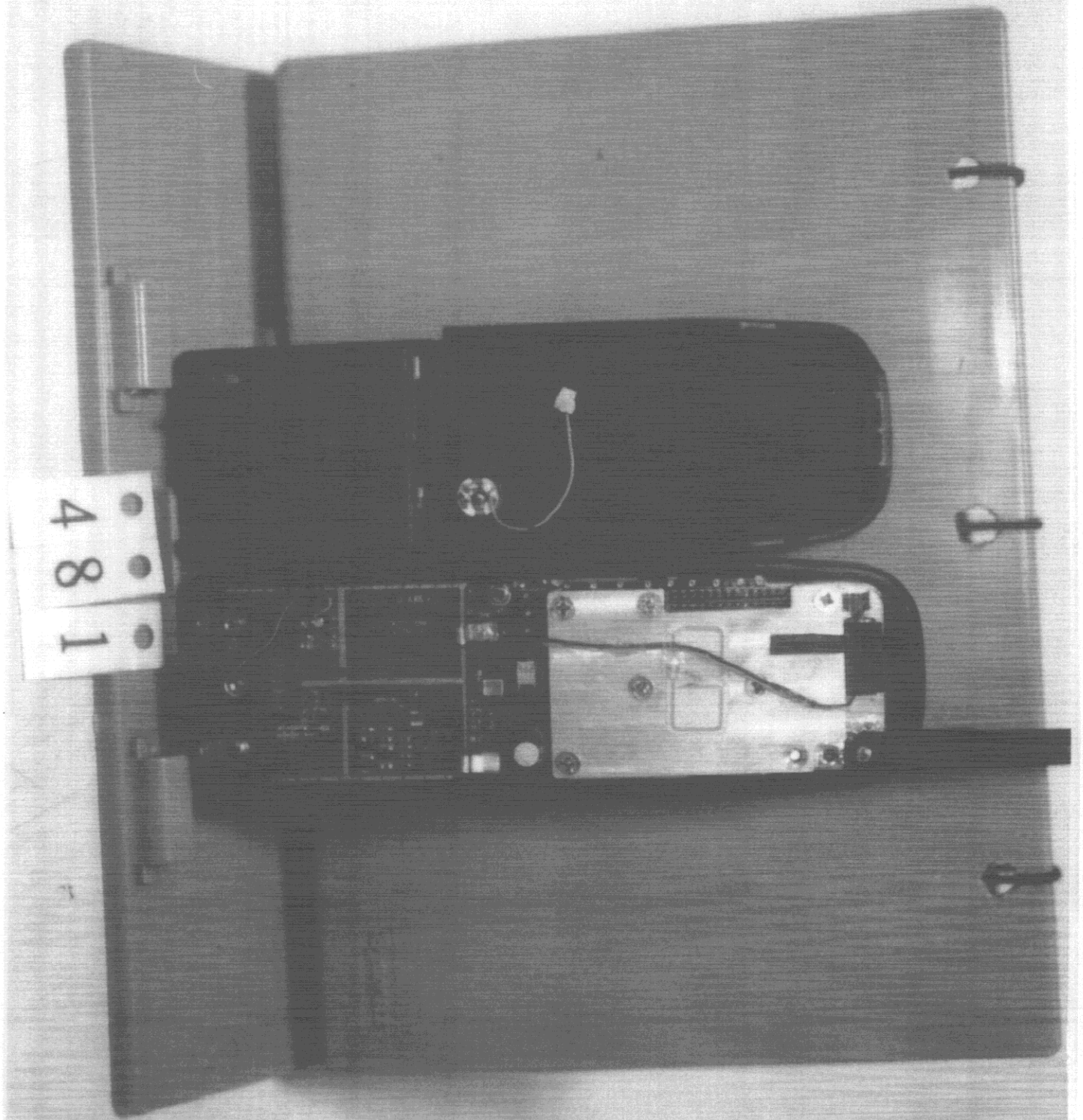
481



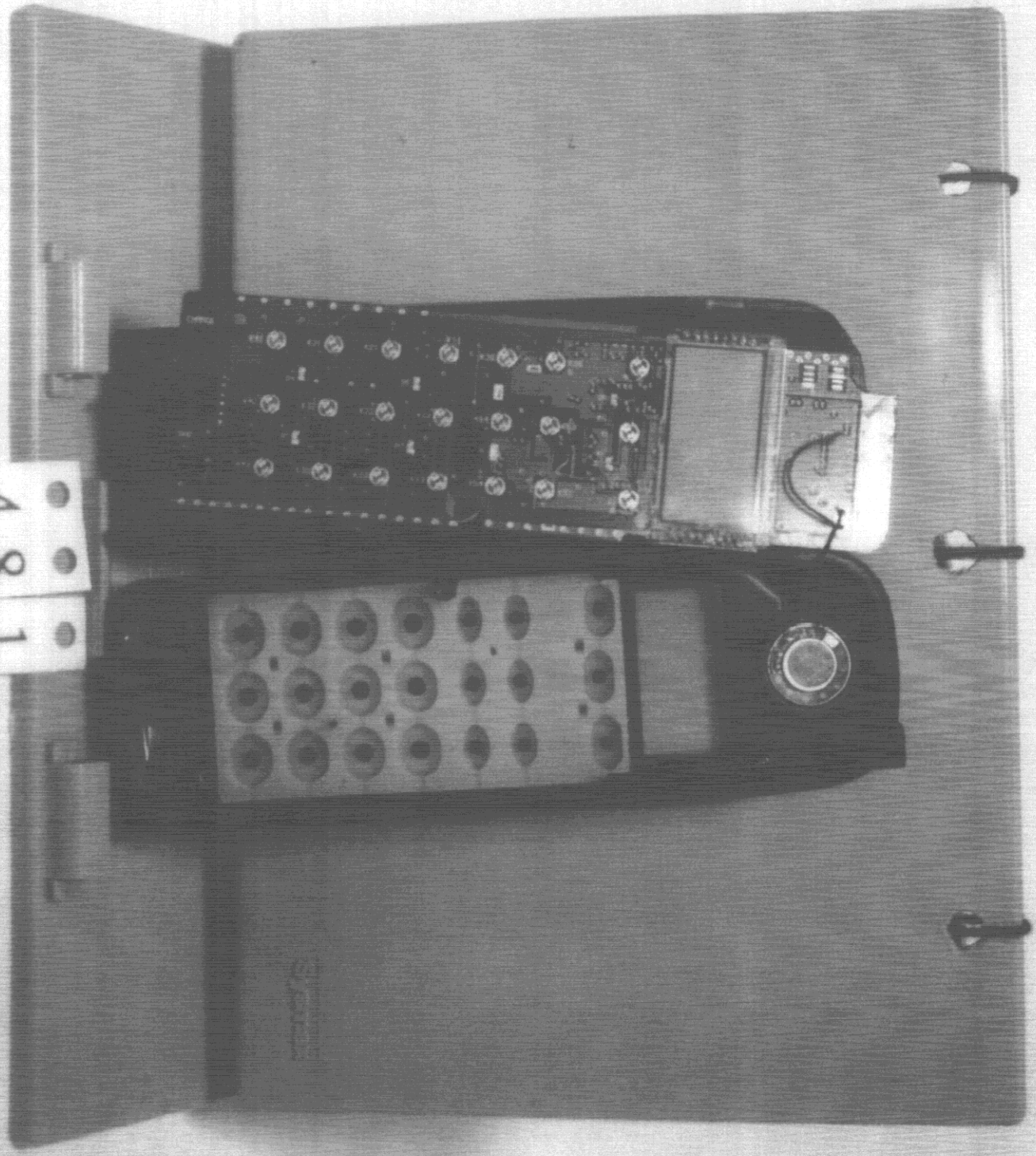
481

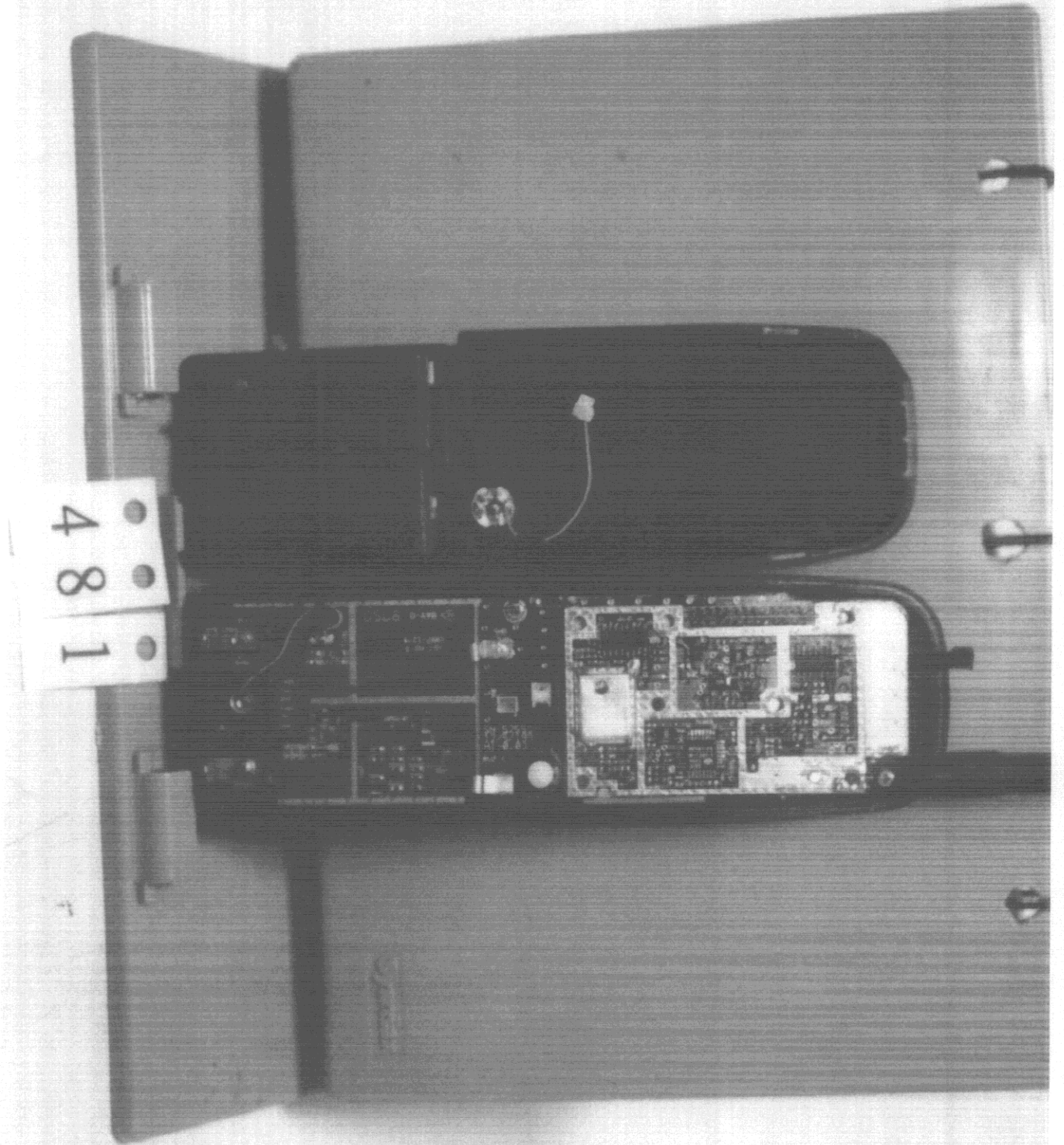
481





4  
8  
1

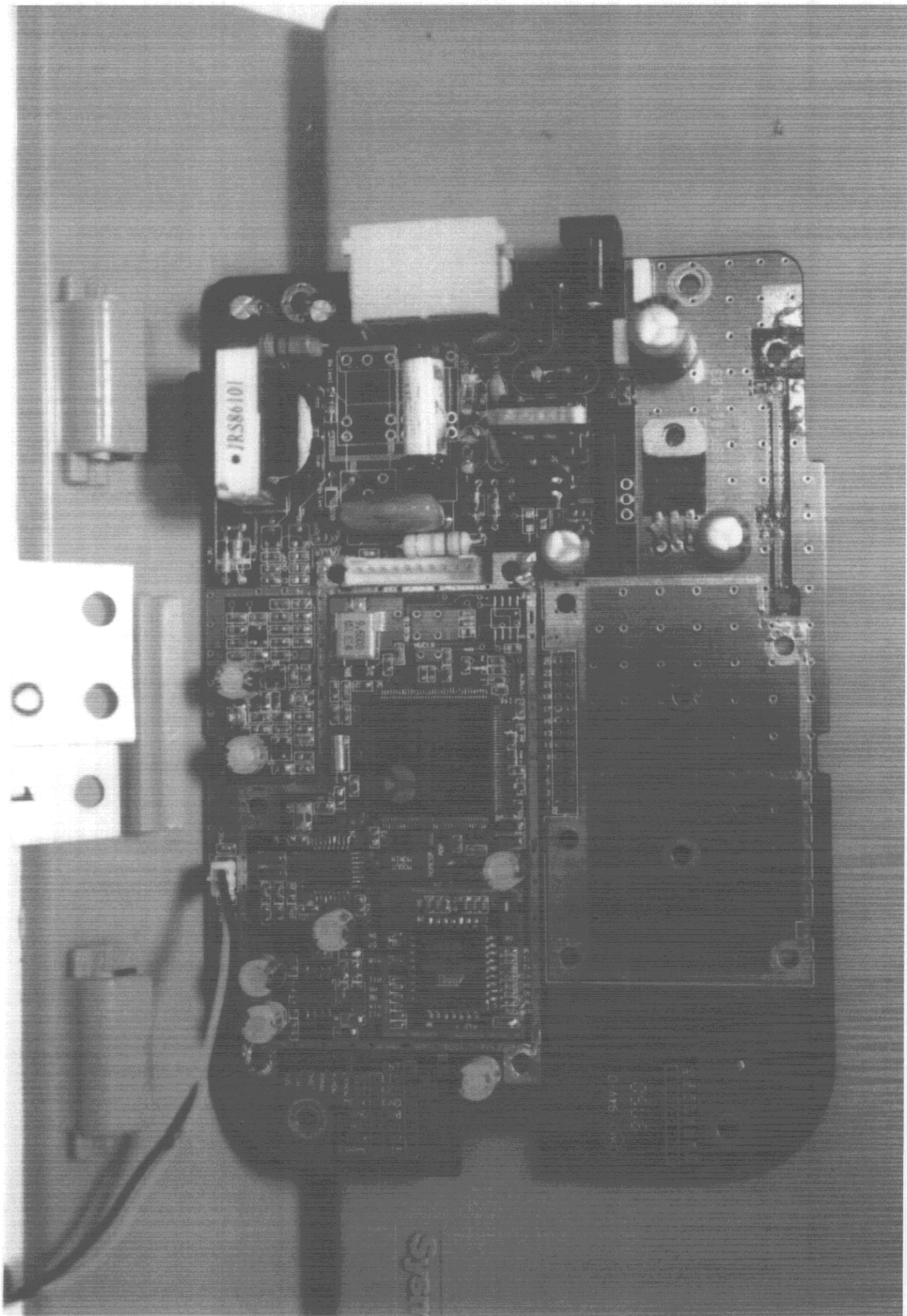




4

8

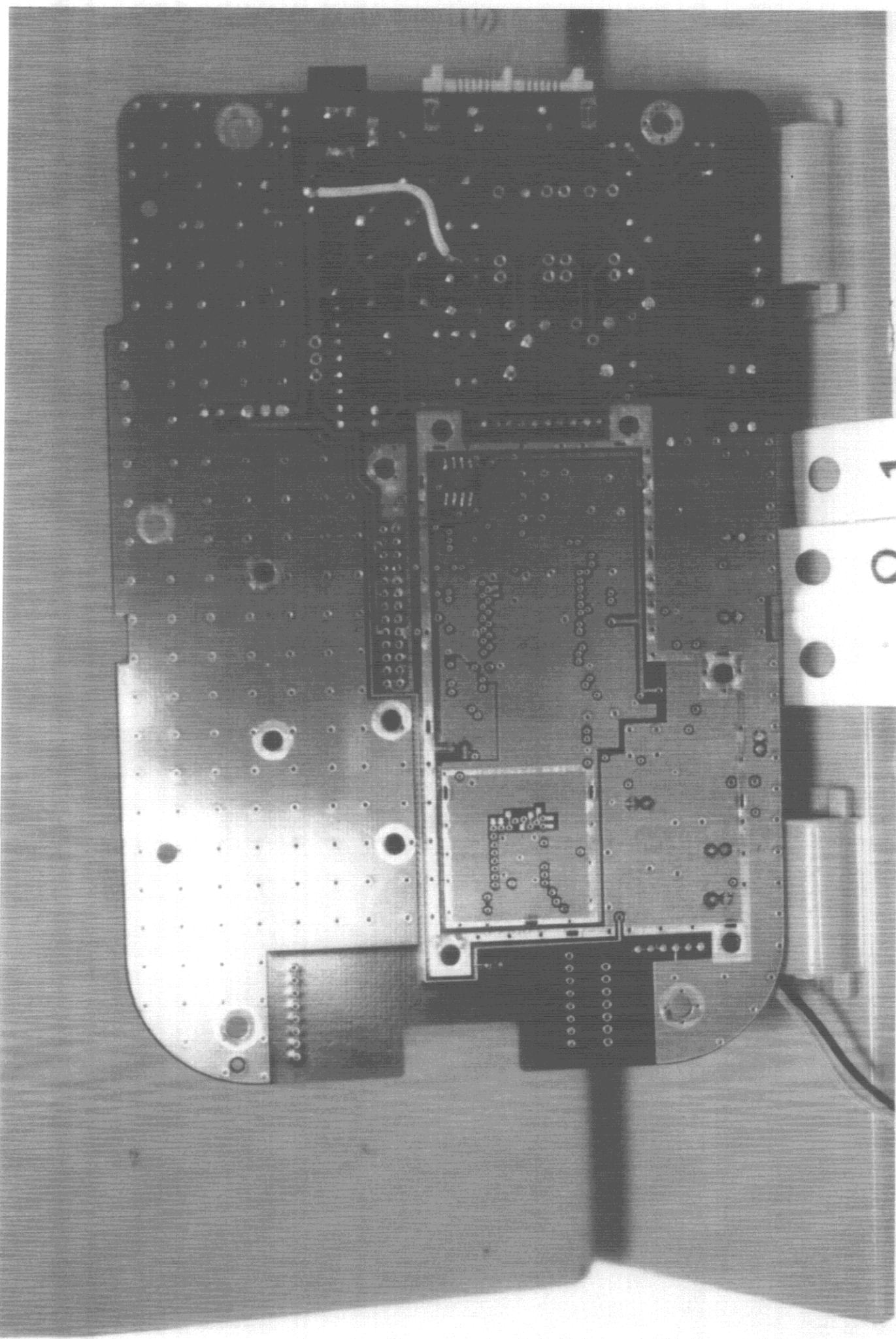
1



JRS86101

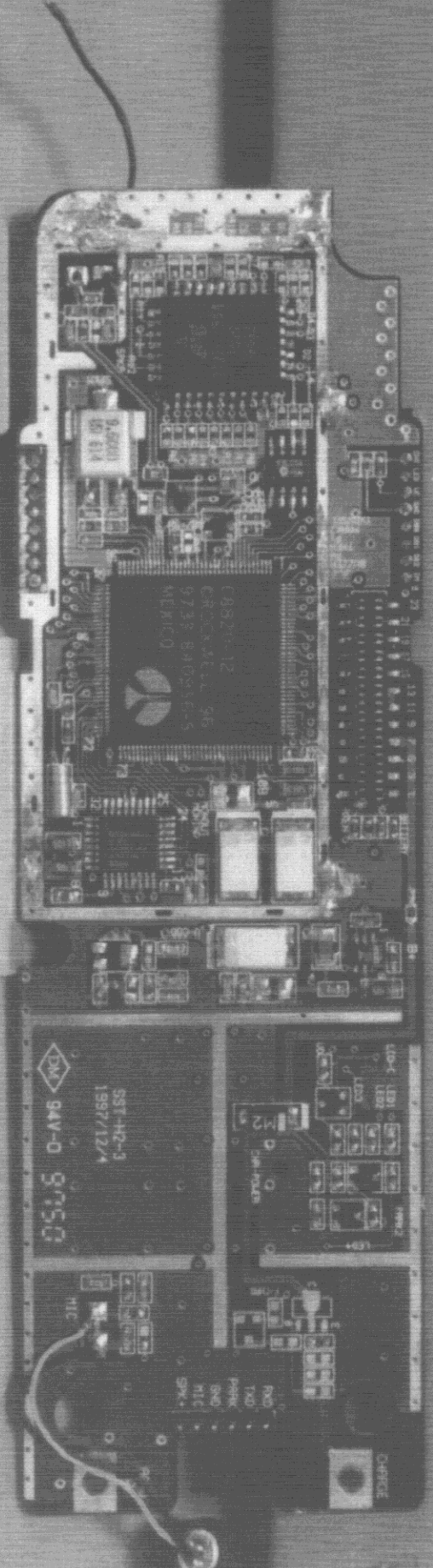
1

SONY



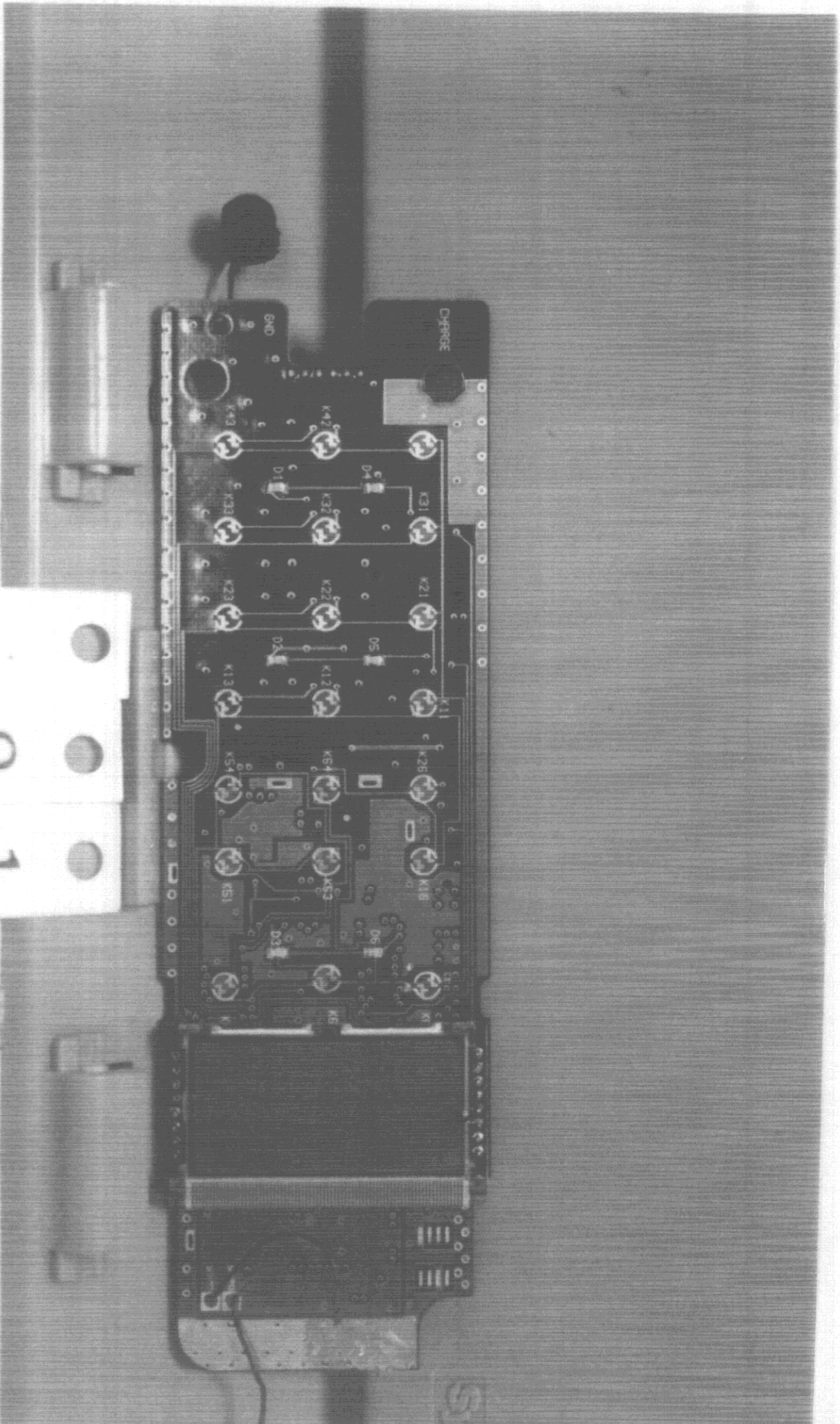


81



SST-H2-3  
1997/12/4  
94V-0 9750

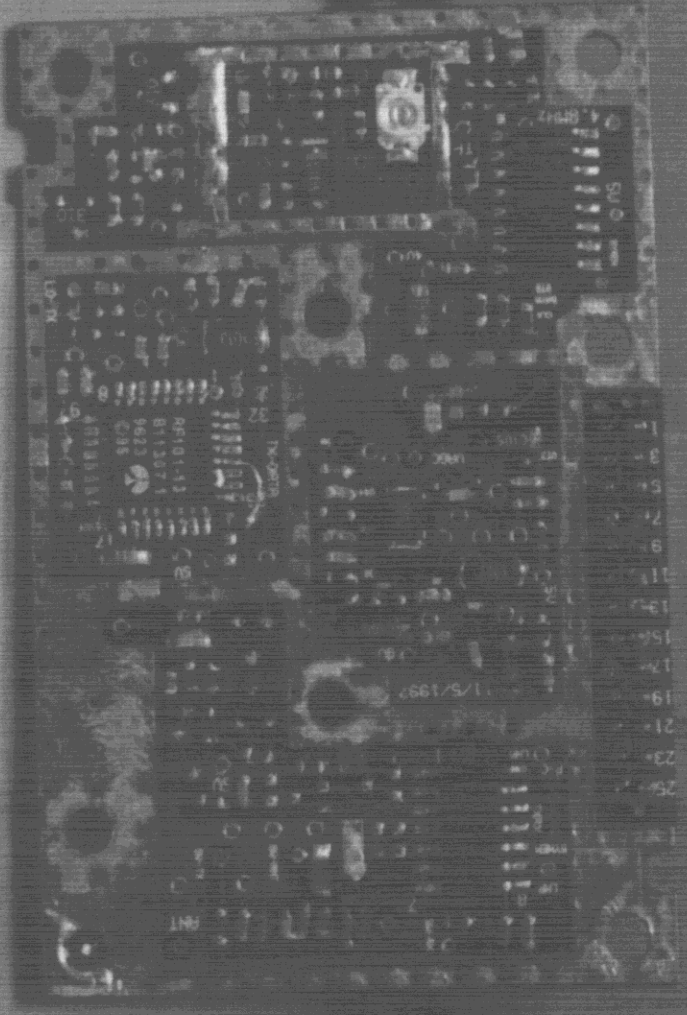
CHARGE  
MIC  
TxD  
RxD  
SPK

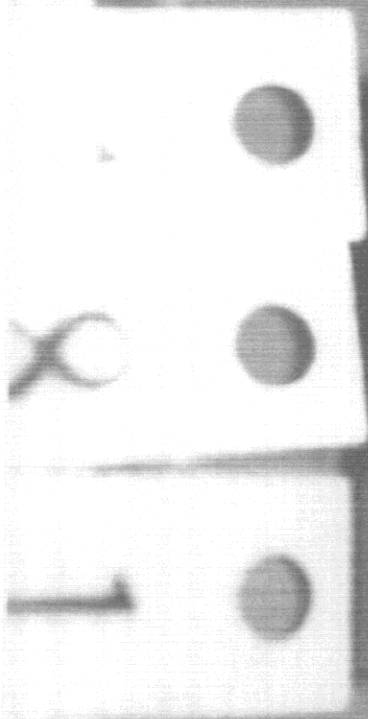
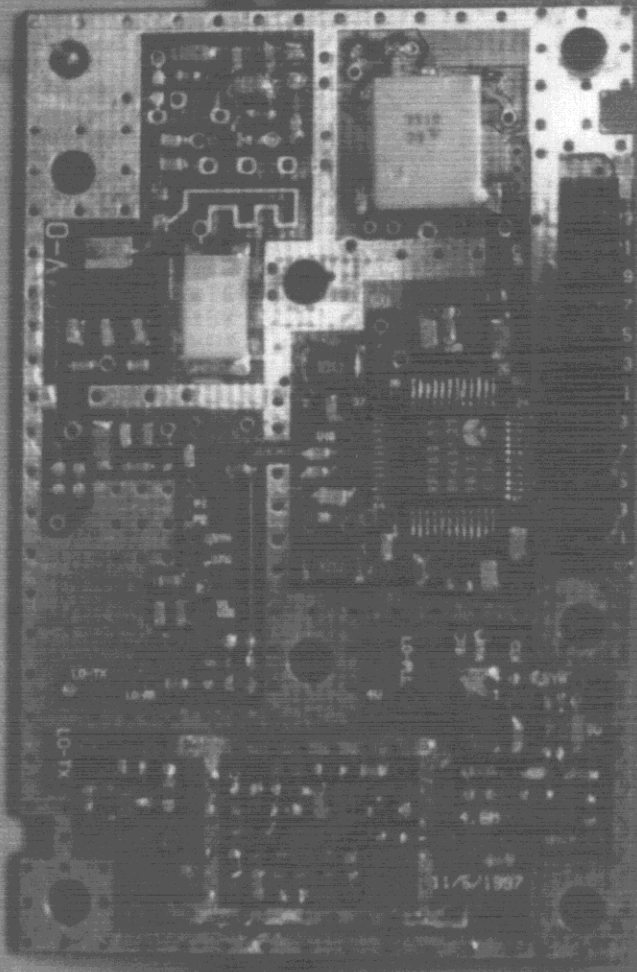


81

2025 RELEASE UNDER E.O. 14176

Q 1

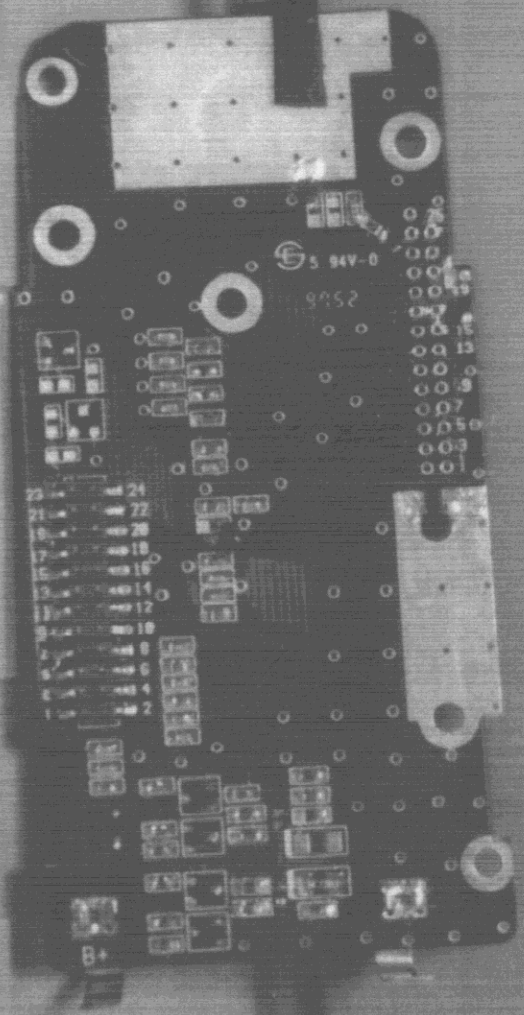




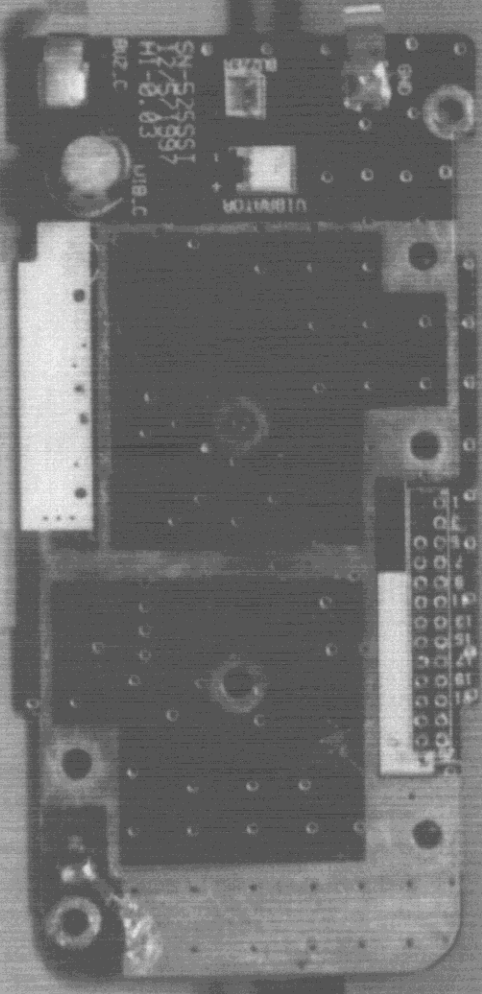
7

7

18



18



SPK

PWR/CAL D8

IN-USE D9

INT-COM D10

R53

R54

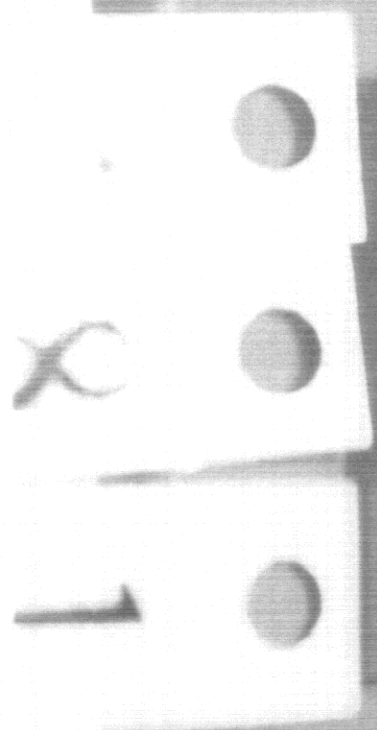
R55

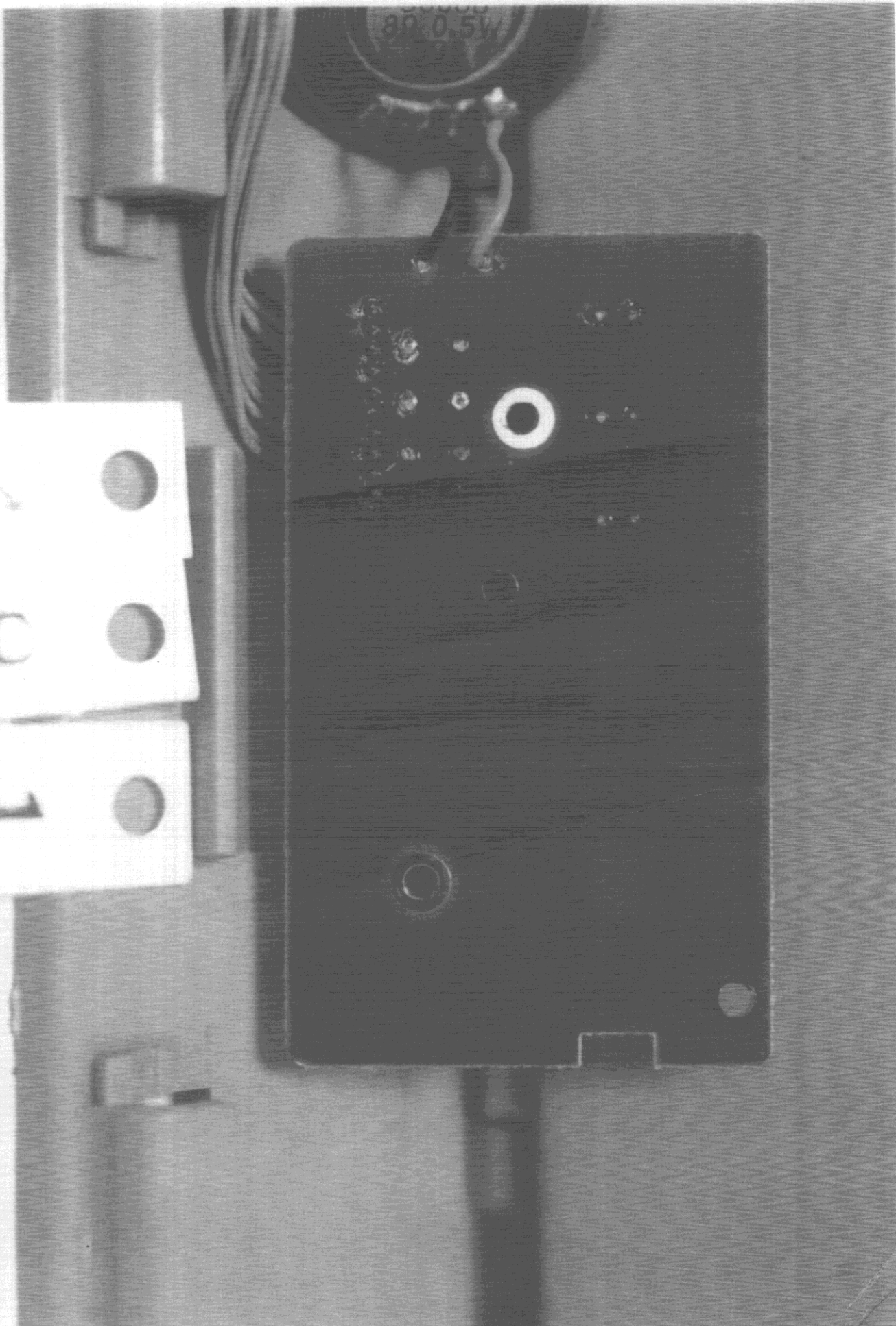
SW2

VOLUME

INT-COM SW1

SN525SST  
B2-0.03  
12/5/1997





80 0.5W

X