

10/16/02

### D2450V2 S/N:706, Frequency: 2450 MHz

Frequency: 2450 MHz; Crest factor: 1.0

Medium: Head 2450MHz:  $\sigma = 1.93$  mho/m  $\epsilon_r = 38.4$   $\rho = 1.00$  g/cm<sup>3</sup>

SAM-1 Phantom; Flat Section; Position: (90°,90°)

Probe: ET3DV6 - SN1578; ConvF(4.50,4.50,4.50);

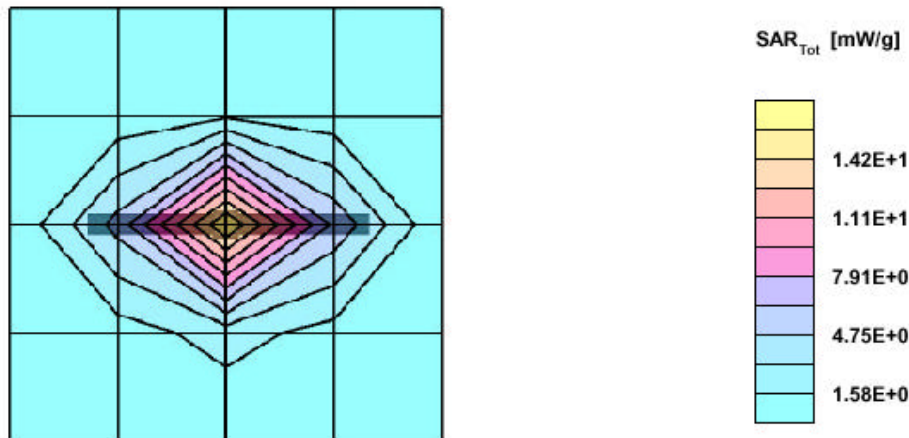
SAR:Cube 5x5x7: Peak: 29.3 mW/g, SAR (1g): 14.2 mW/g, SAR (10g): 6.55 mW/g, (Worst-case extrapolation)

Penetration depth: 6.5 (6.3, 7.2) [mm]; Powerdrift: -0.11 dB

Coarse: Dx = 20.0, Dy = 20.0, Dz = 10.0

Ambient Temperature (degree C): 23

Liquid Temperature (degree C): 21.3



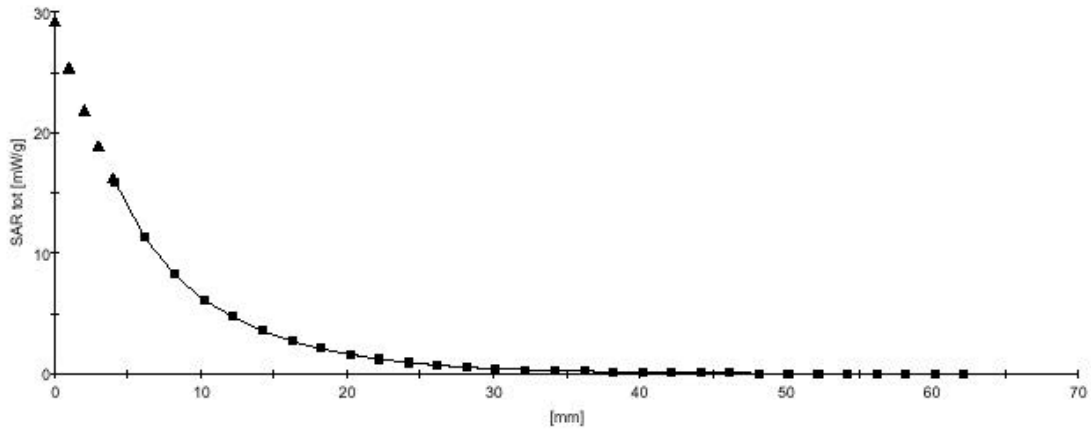
COMPLIANCE CERTIFICATION SERVICES

10/16/02

### D2450V2 S/N:706, Frequency: 2450 MHz

Frequency: 2450 MHz; Crest factor: 1.0  
Medium: Head 2450MHz:  $\sigma = 1.93$  mho/m  $\epsilon_r = 38.4$   $\rho = 1.00$  g/cm<sup>3</sup>  
SAM-1 Phantom; Section; Position:  
Probe: ET3DV6 - SN1578; ConvF(4.50,4.50,4.50);  
SAR:: , , ()  
Penetration depth: 6.6 (6.3, 7.3) [mm];  
Z-Axis: Dx = 0.0, Dy = 0.0, Dz = 2.0

Ambient Temperature (degree C): 23  
Liquid Temperature (degree C): 21.3



COMPLIANCE CERTIFICATION SERVICES