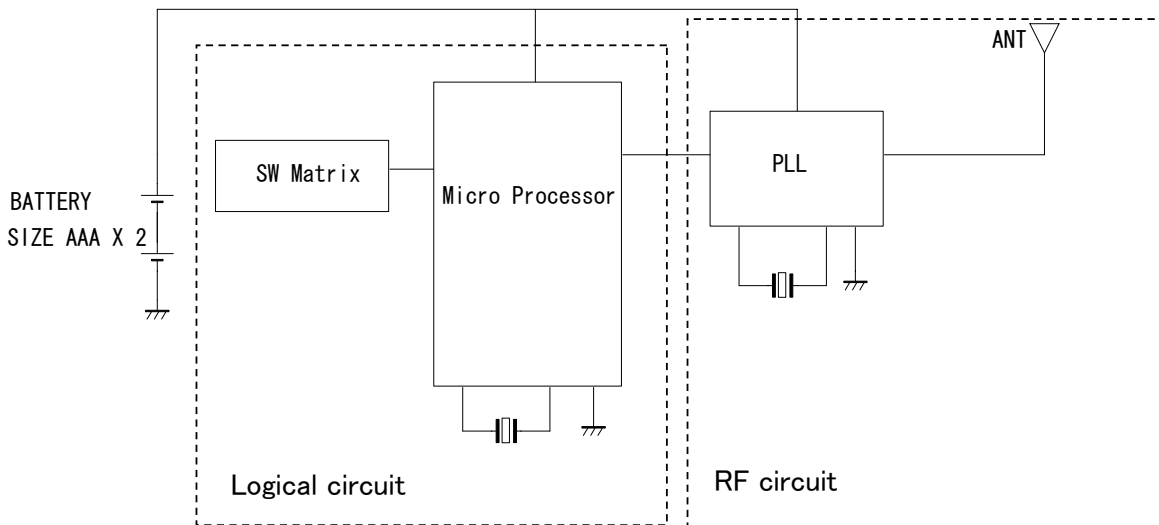


BLOCK DIAGRAM



RF circuit consists of the following.

1. Fully integrated as PLL(Phase Locked Loop) IC
PLL-stabilized VCO (Voltage Controlled Oscillator), PFD (Phase/Frequency Detector), Pri-Scaler (div 32), Charge Pump, PA (Power Amplifier)
2. Crystal
This crystal makes the reference frequency for the VCO.
3. Antenna
This antenna is integrated on the PCB.