

EUT Internal Photos

*Photo 4
Internal View (Cover Removed)*



*Photo 5
PCB View (Front View)*

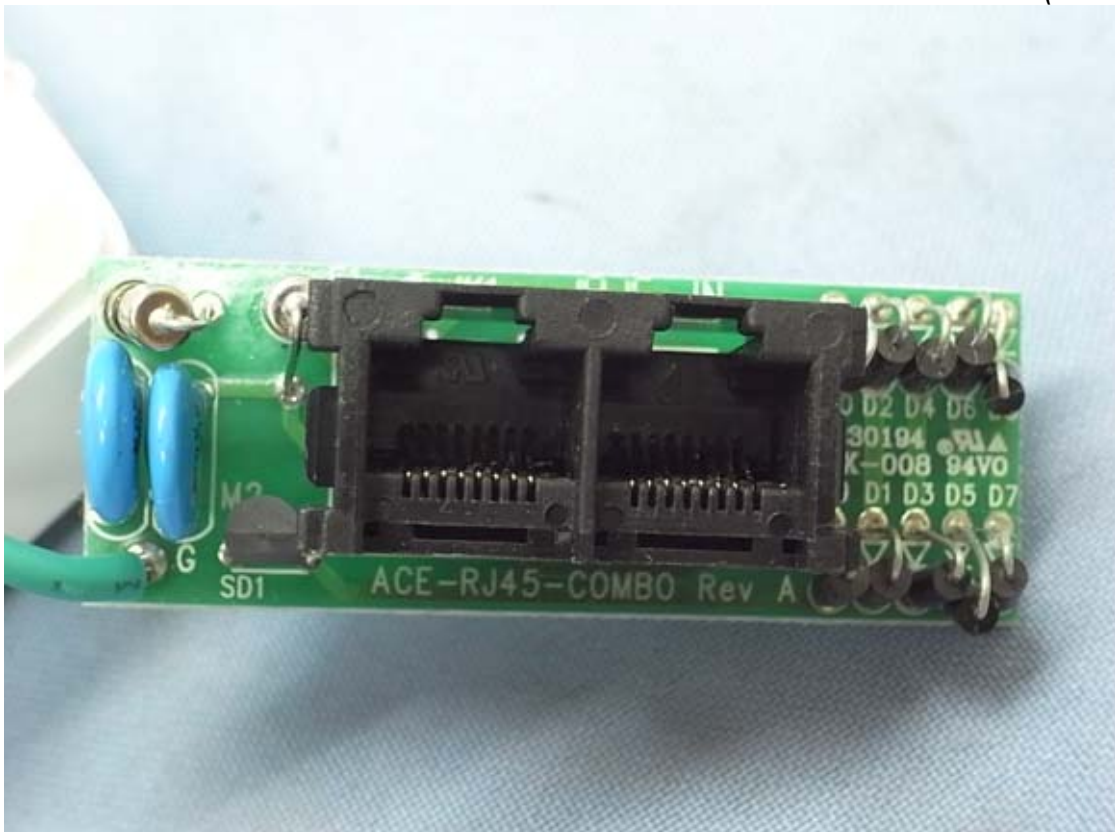


Photo 6
PCB View (Back View)

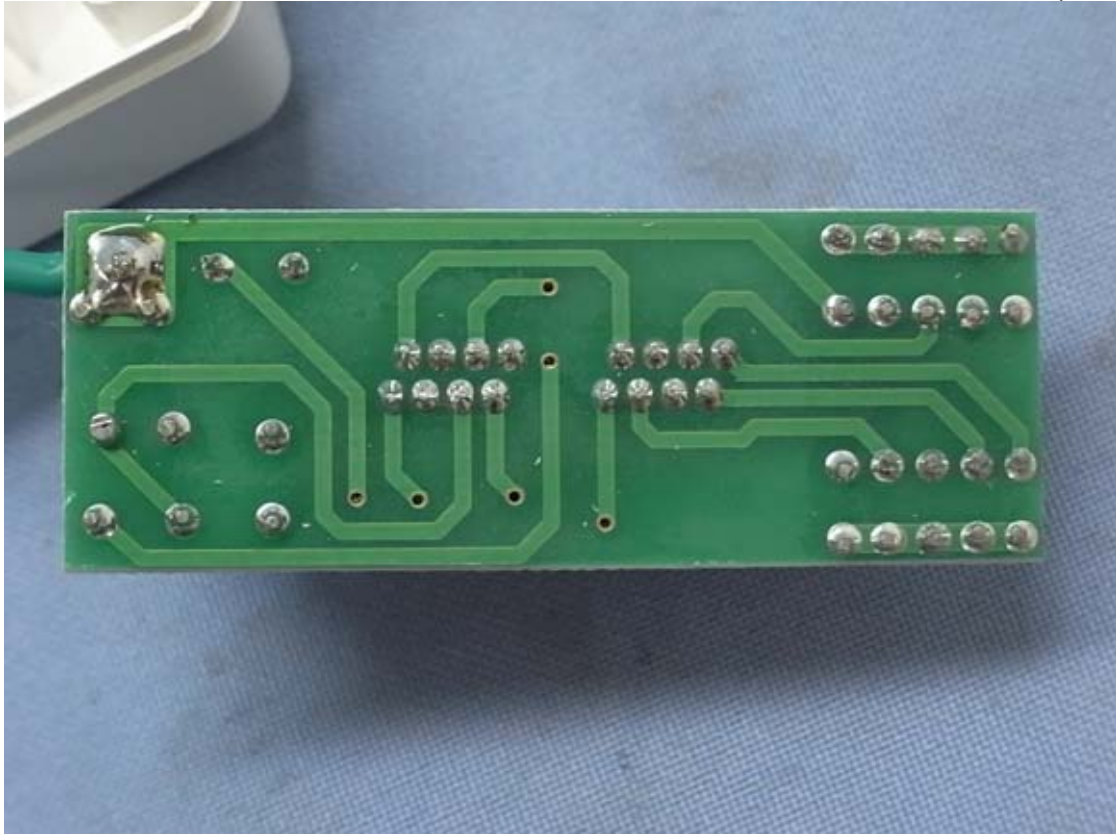


Photo 7
PCB View (Front View)

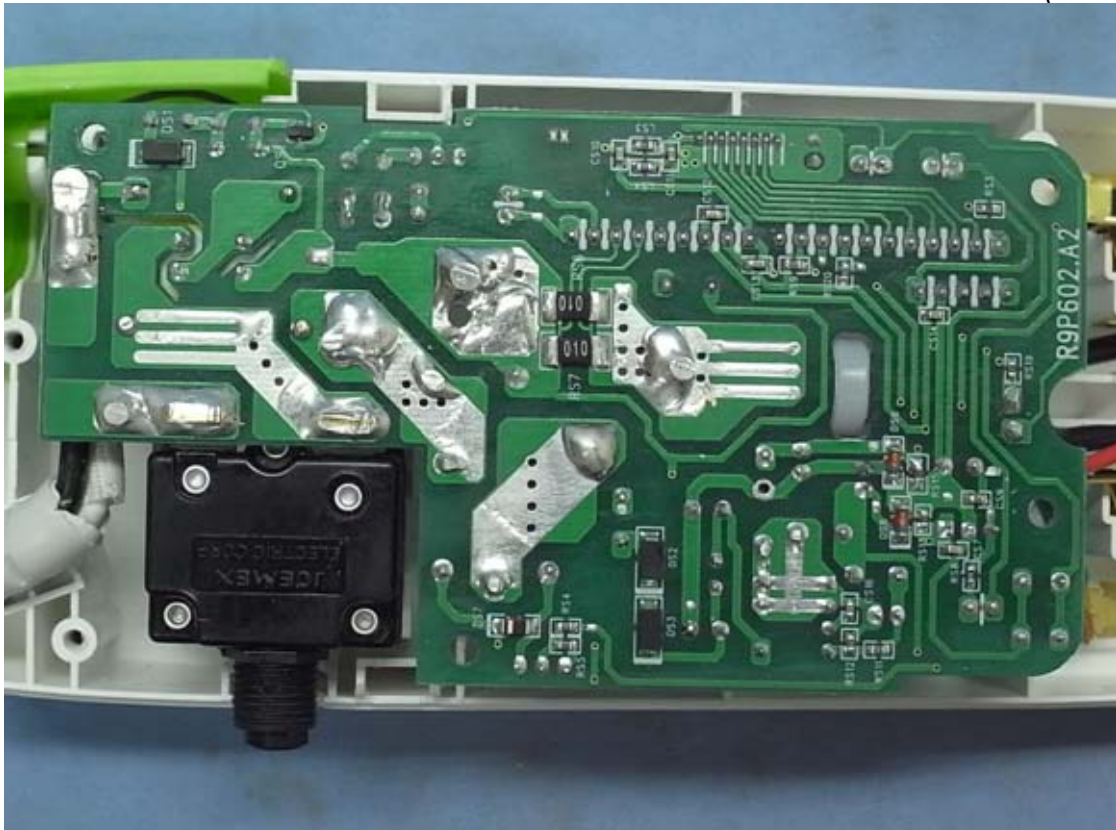


Photo 8
PCB View (Back View)



Photo 9
PCB View (Side View)



Photo 10
PCB View (Side View)

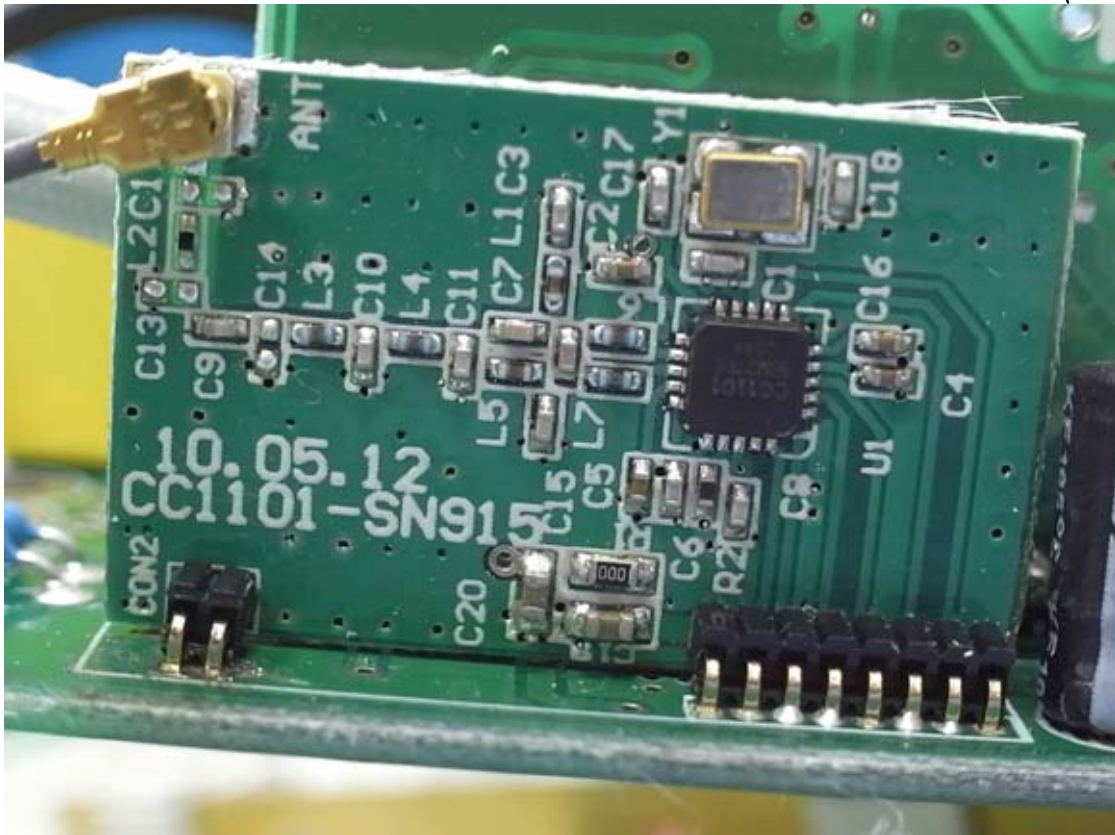


Photo 11
PCB View (Front View)

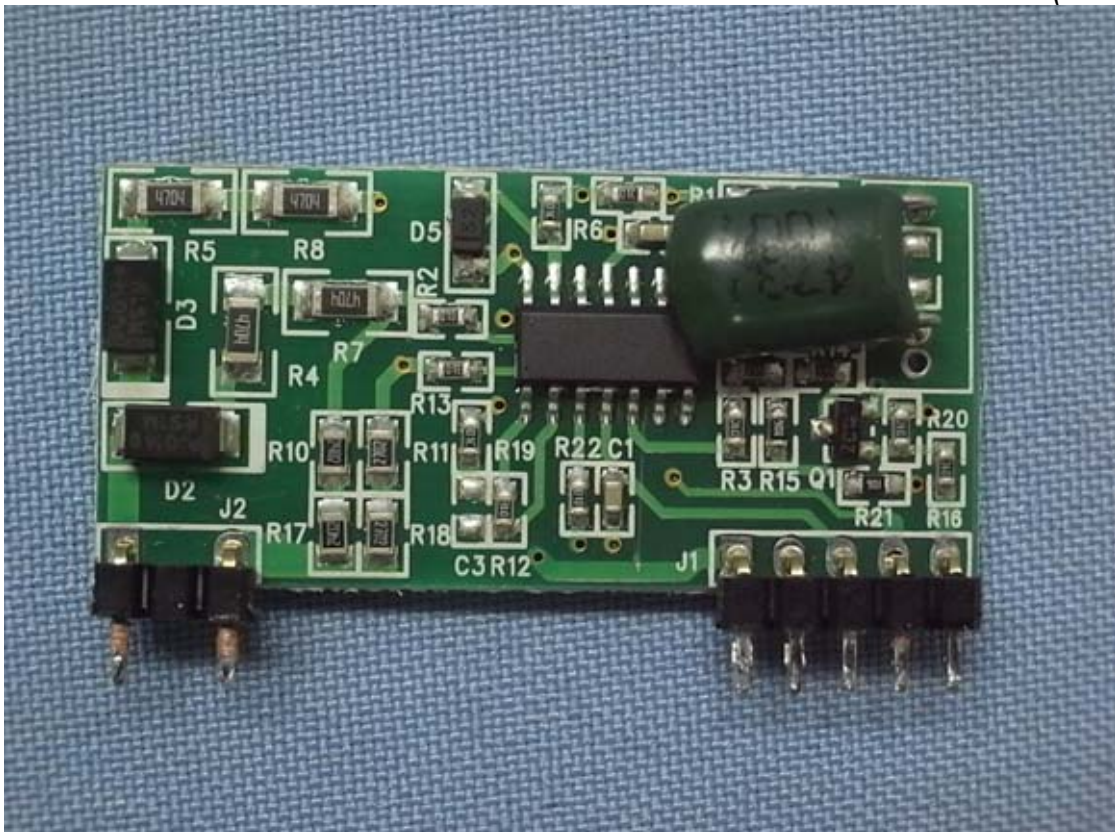


Photo 12
PCB View (Back View)

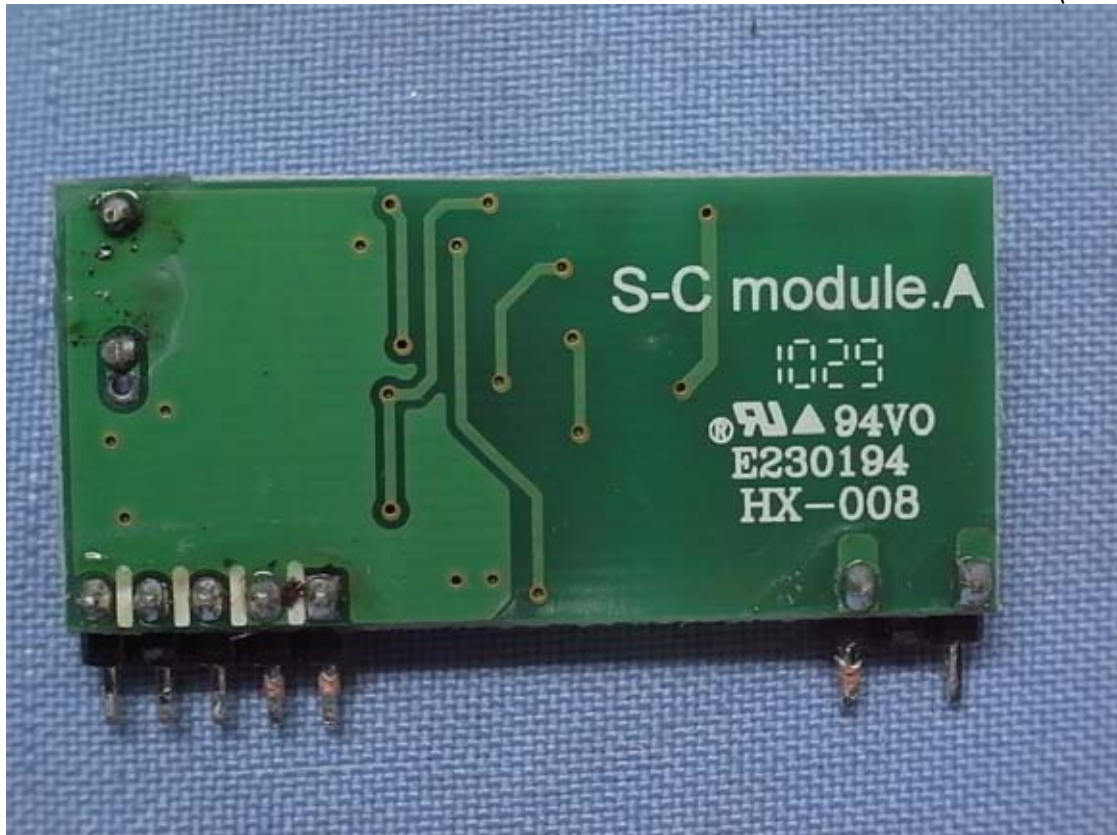


Photo 13
PCB View (Front View)

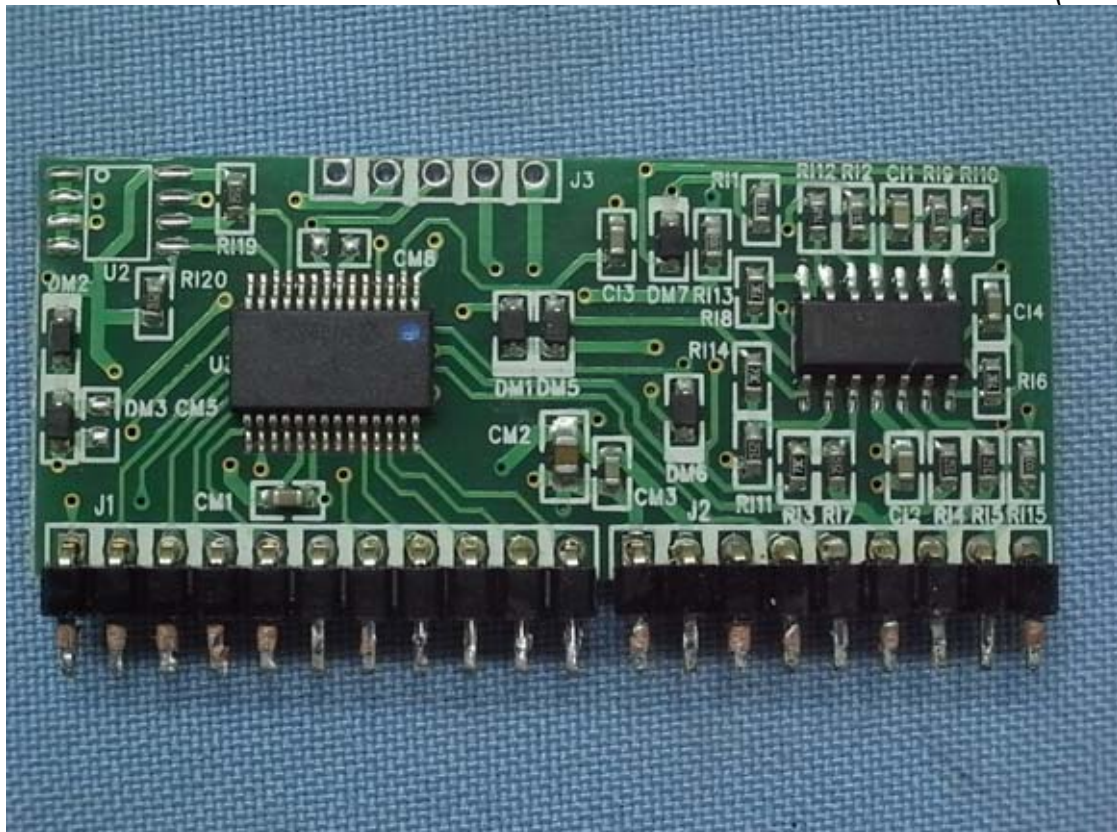


Photo 14
PCB View (Back View)

