

EUT Internal Photos

*Photo 4
Internal View (Cover Removed)*



*Photo 5
PCB View (PCBs Removed)*



Photo 6
PCB View (Front View)

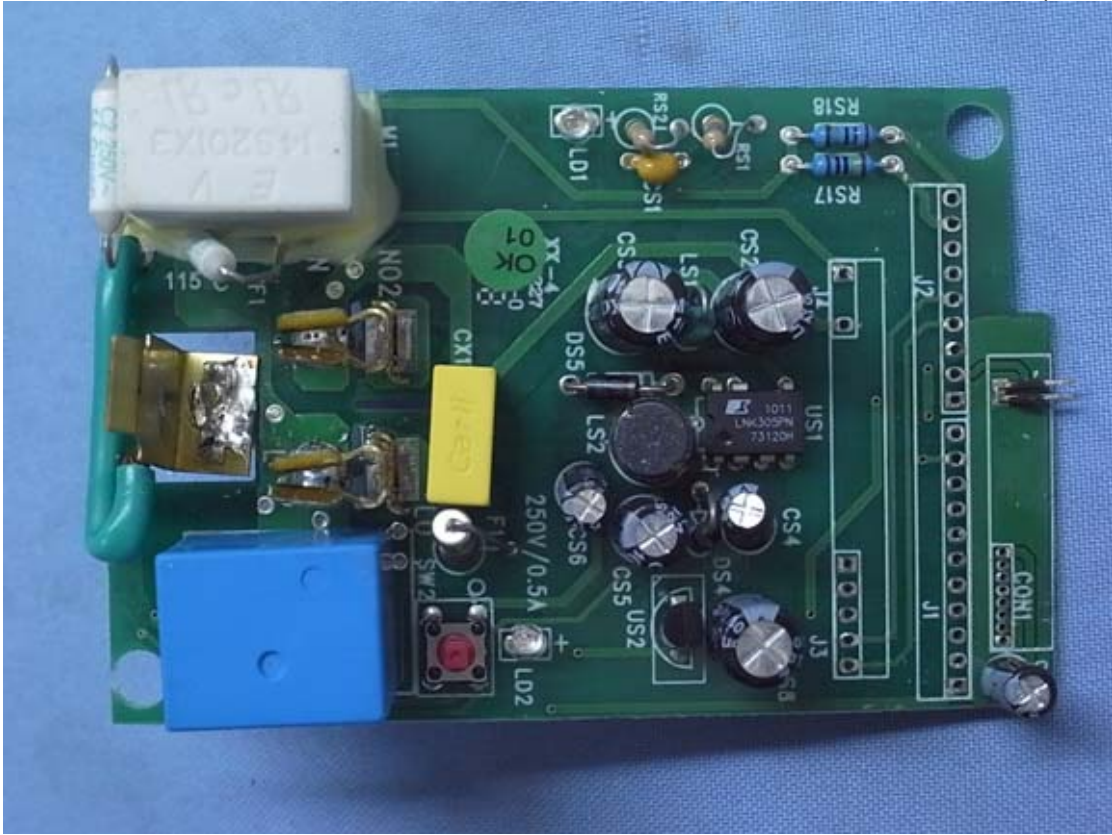


Photo 7
PCB View (Back View)

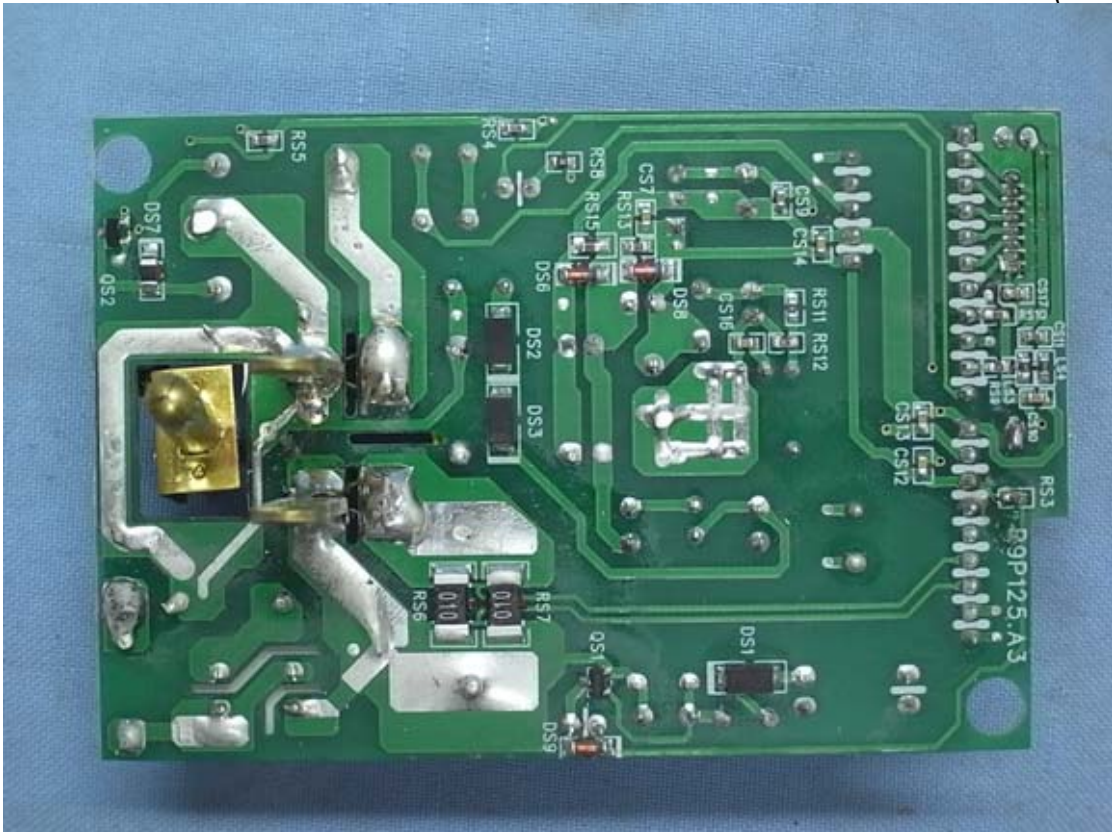


Photo 8
PCB View (Front View)

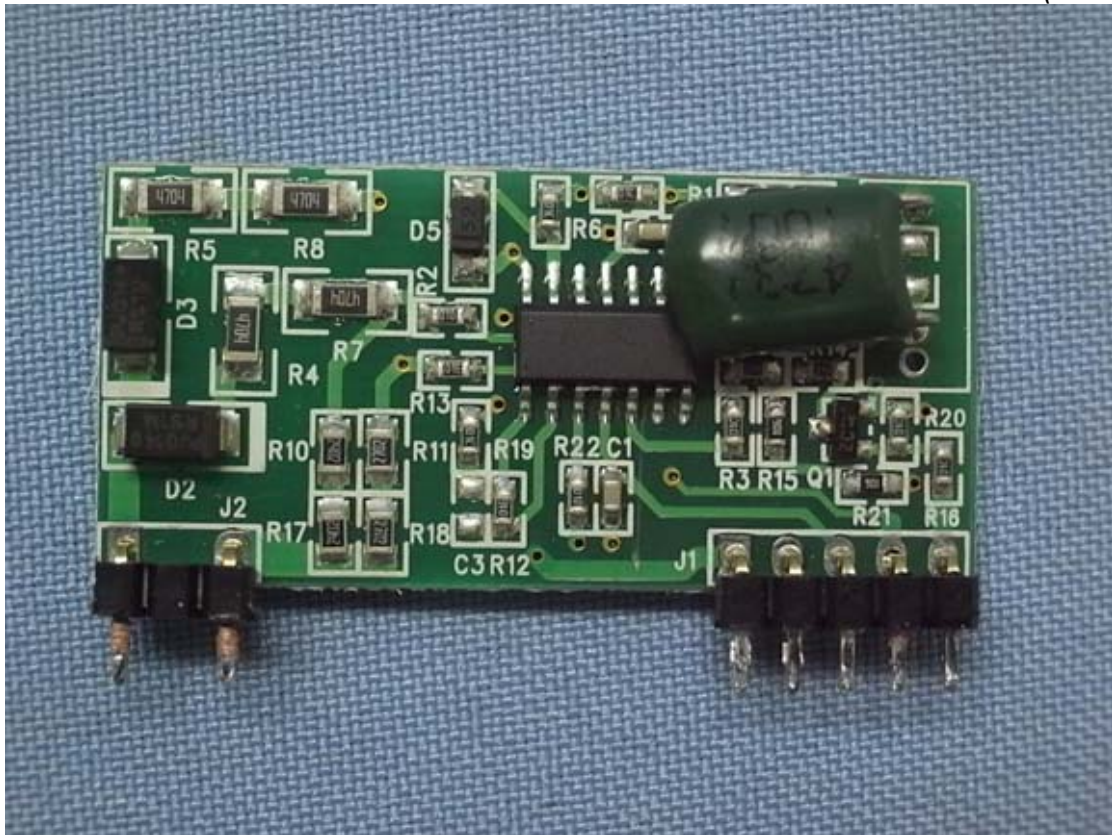


Photo 9
PCB View (Back View)



Photo 10
PCB View (Front View)

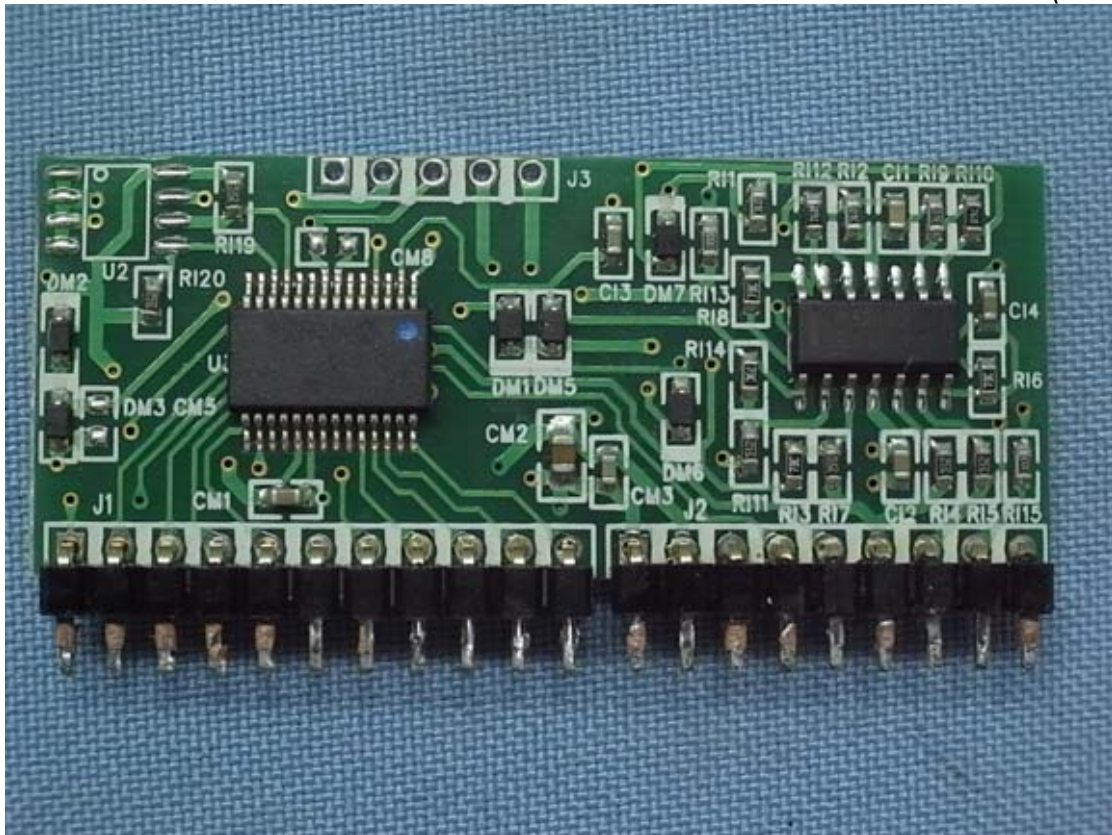


Photo 11
PCB View (Back View)

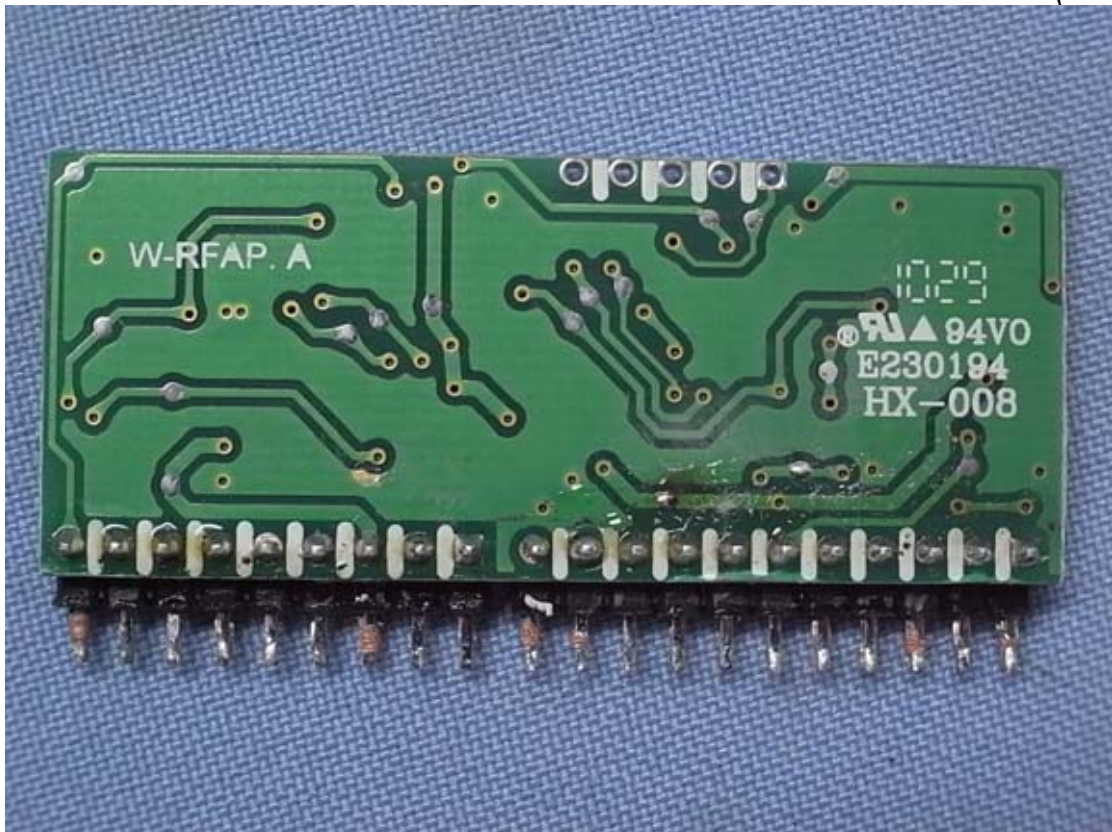


Photo 12
PCB View (Front View)



Photo 13
PCB View (Back View)

