

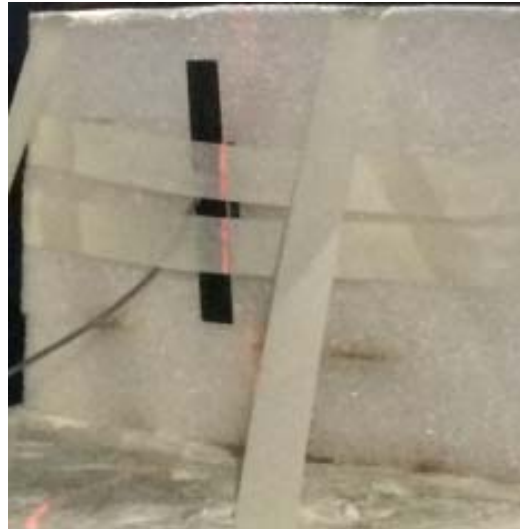


Specification

Rough description		
Item	Initial Specification	Final Specification
Dimensions	None	
Impedance	50Ω	
Test environment	Without housing	
Spectrum	WIFI	
Freq. Range	2.4~2.5/5.15~5.85 GHz	
Antenna type	Dipole	
Gain	2.4~2.5 GHz : 2.0dBi(Peak gain) 5.15~5.85 GHz : 2.0dBi(Peak gain)	
Radiation	Near Omni	
Polarization	Linear	
Rad. efficiency	2.4~2.5GHz >60.1% 5.15~5.85GHz >60.5%	
Retune Loss	≤-10db	
Connector type	I-PEX	
Cable length(Total)		
Isolation	≤-20db	



1. Antennas' setup and environment



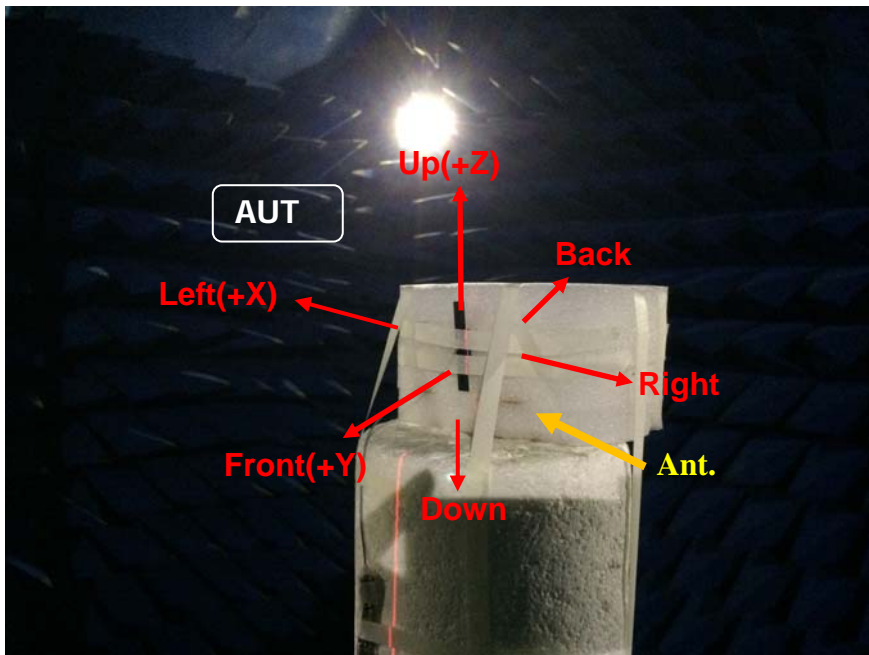
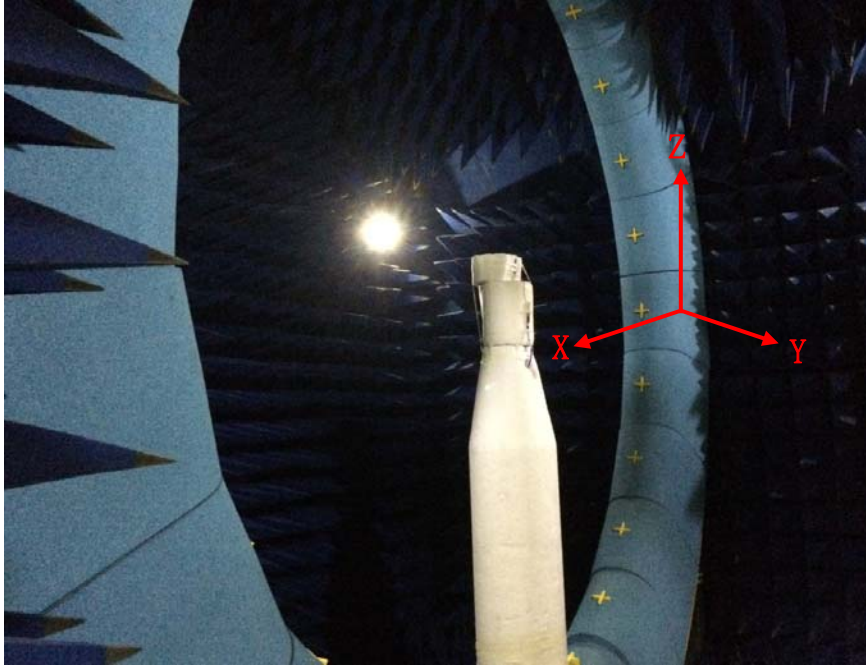
2. S11_test results Antenna 1



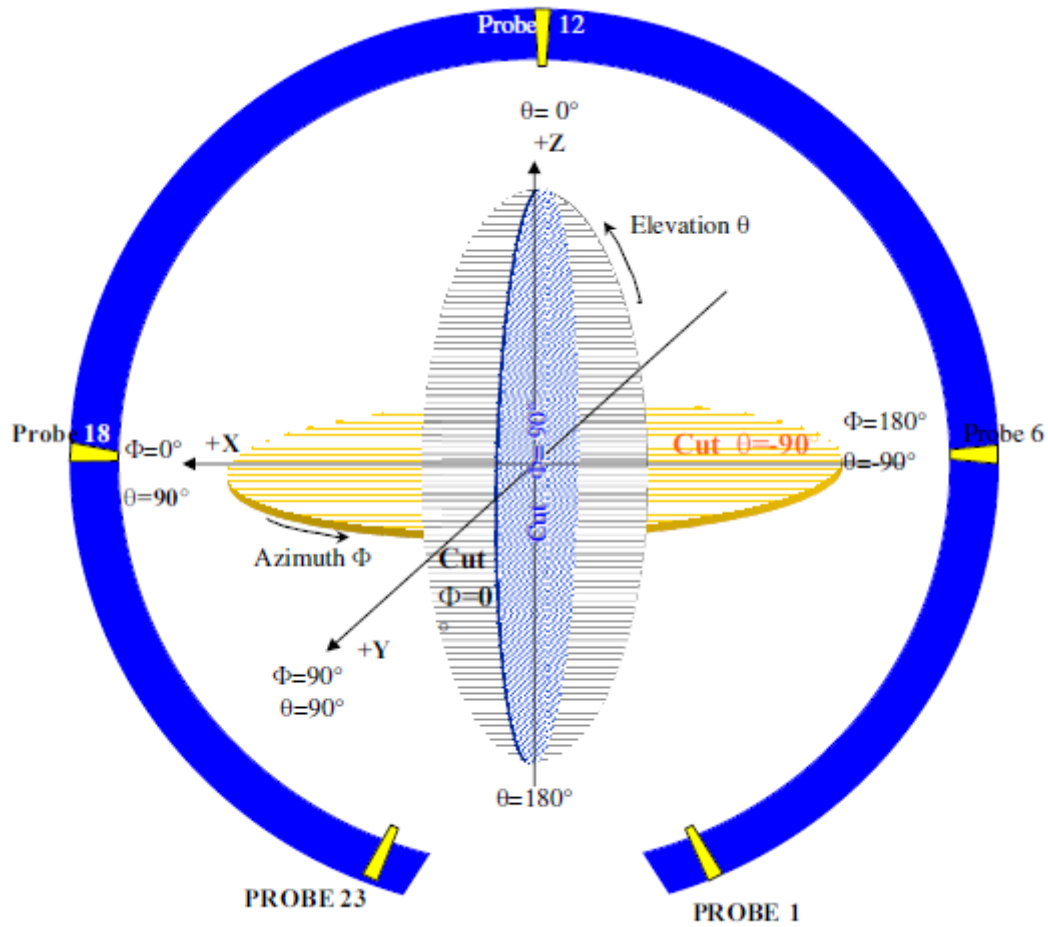


3. Gain & Patterns test results

3.1 Measurement setting



	XY	YZ	XZ
0°	Left	Up	Up
90°	Front	Front	Left
180°	Right	Down	Down
270°	Back	Back	Right



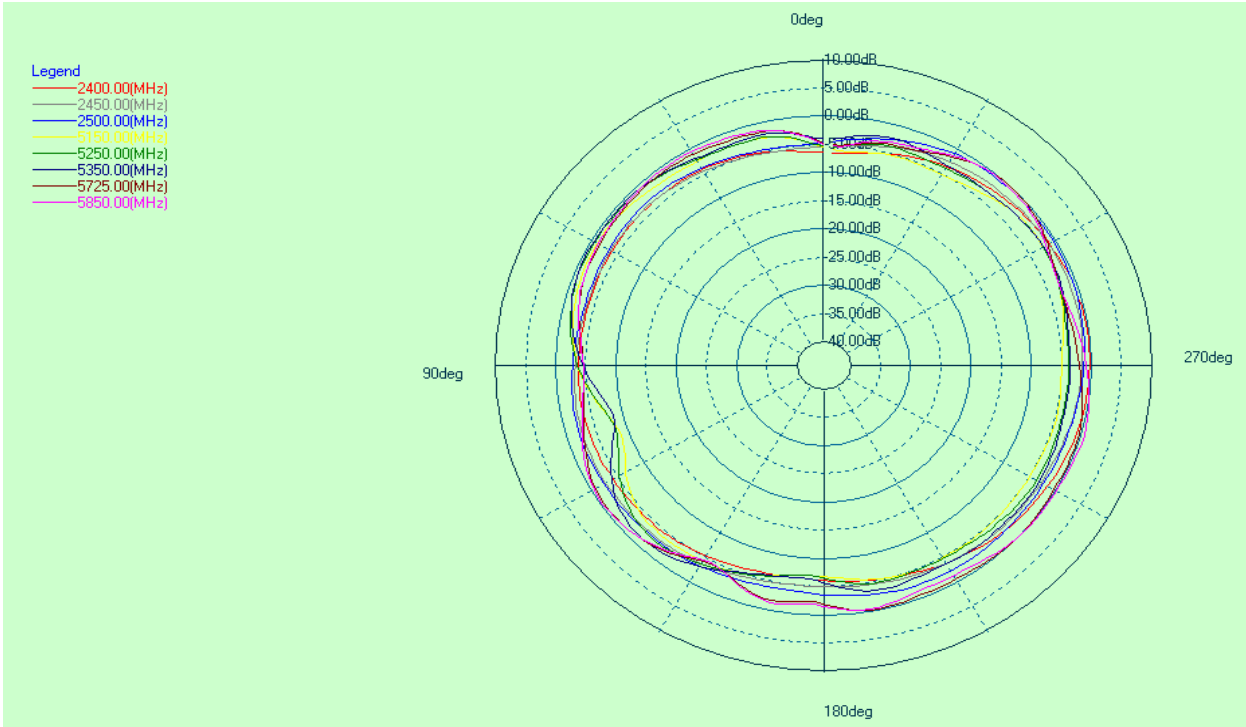
	θ	ϕ
Total angle	175°	360°
How many angle scan one point	5°	5°
Total scan point	36	73



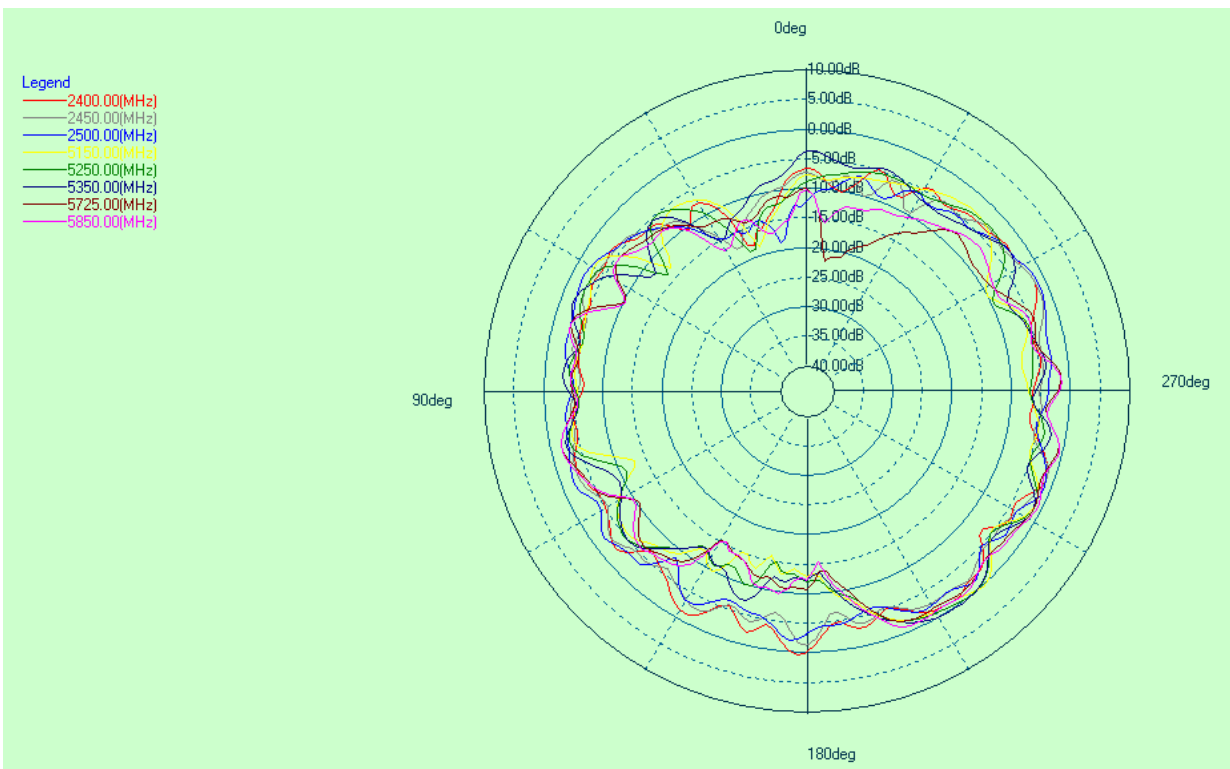
3.2 2D patterns

Antenna 1

X-Y



X-Z





Y-Z

