

User Manual

For

EDGE-100M PCMCIA card

FCC INFORMATION

The Federal Communication Commission Radio Frequency Interference Statement includes the following paragraph:

The equipment has been tested and found to comply with the limits for a Class B Digital Device, pursuant to part 15 of the FCC Rules. These limits are designed to provide reasonable protection against harmful interference in a residential installation. This equipment generates, uses and can radiate radio frequency energy and, if not installed and used in accordance with the instruction, may cause harmful interference to radio communication. However, there is no grantee that interference will not occur in a particular installation. If this equipment does cause harmful interference to radio or television reception, which can be determined by turning the equipment off and on, the user is encouraged to try to correct the interference by one or more of the following measures:

- Reorient or relocate the receiving antenna.
- Increase the separation between the equipment and receiver.
- Connect the equipment into an outlet on a circuit different from that to which the receiver is connected.
- Consult the dealer or an experienced radio/TV technician for help.

The changes or modifications not expressly approved by the party responsible for compliance could void the user's authority to operate the equipment.

To comply with the FCC RF exposure compliance requirements, this device and its antenna must not be co-located or operating to conjunction with any other antenna or transmitter.

This device complies with Part 15 of the FCC Rules. Operation is subject to the following two conditions: (1) this device may not cause harmful interference, and (2) this device must accept any interference received, including interference that may cause undesired operation.

Hardware

- a. ANT (shown on housing): Antenna for GSM network
The antenna must be used in vertical way to stand up on unit.
- b. SIM : It is for inserting SIM card.
- c. Earphone : It is for plugging earphone cable for voice communication.
- d. NET: When unit connects to cellular service station, LED will start blinking.
- e. PWR: When power is provided. This card needs 5VDC power.



Quick Guide for EDGE PCMCIA modem installation

1. Please insert CD to CD drive, Software (Mobile Phone Tool) will install automatically.
2. If you want to use this card without software, please use DTE speed 460800 to communicate with this card.

Software Installation Manual for EDGE-100M modem

Please do not insert EDGE-100M card before installing software.

- 1. Please insert BVRP CD into your CD ROM drive. Software will auto-run by itself.**
- 2. Please click “Next” and select “Install the application”**
- 3. Then Software set up is completed and ask which hardware you want to install.**
Please have your SIM card PIN code (security password) disabled. Then insert SIM card into SIM card holder. But do not insert PCMCIA card into Notebook or PC yet.
After all installation is completed, you can set SIM pin code again.
Please select “PCMCIA” as a device to be installed.
Software will install PCMCIA card automatically, then ask to plug in PCMCIA card.
- 4. Please insert PCMCIA card with SIM card inserted. Software will auto install driver.**
- 5. After installing PCMCIA card, BVRP will start to initialize PCMCIA card. Installation is completed.**

Trouble-shooting

After launching Mobile Phone Tool, You also can click on “MENU” , “View” , “Modem Exchange”, to see all commands issued to modem and how modem response to software.

When you close this software, please make sure you wait for software to release modem. Otherwise it may cause some error. If it happened, you may need to use Ctrl+Alt+Del to stop the operation.

Before Installing

Screen Shots

The screen shots in this guide correspond to the use of mobile PhoneTools in a Windows XP environment. When running the application in other Windows operating systems, the aspect of the screens may change. This will not impair the software's functionality.

Online Help

mobile PhoneTools has a context sensitive online help that can be accessed by clicking the help button or by pressing F1 on your keyboard. Complete information on how to use mobile PhoneTools can be found in the help files.

Installing mobile PhoneTools

Important!

You need to install the software before connecting the device to the PC.

To install mobile PhoneTools on your hard drive, insert the CD-ROM containing the program in the appropriate drive. When installing mobile PhoneTools from the CD-Rom, the installation process starts automatically.

Should the installation program not start, execute the following instructions:

1. Select the **Run** command from the **Start** menu (accessible from the task bar).
2. Select the drive that contains the CD or type **D:SETUP** (**D:** represents the CD-Rom drive).
3. Click **OK** to run the file.

An installation wizard will guide you step-by-step through the installation process, prompting for information where needed. During the installation process the content of the CD-Rom is copied onto your hard drive and a program group is created to hold the application icons for mobile PhoneTools.

After installation, the online registration wizard is automatically launched (see *Online registration*, page 7). The registration is necessary to benefit from the guarantee, the technical assistance, and free upgrades.

Depending on the operating system, when the installation process is completed, the installation wizard asks you to restart your computer so that all system changes take effect.

The mobile PhoneTools program group is then accessible from the **Start** menu (from the task bar) and the following icon can be added to the desktop, as a short-cut, to start the program :



mobilePhoneTools

Mobile Device installation and configuration

Important!

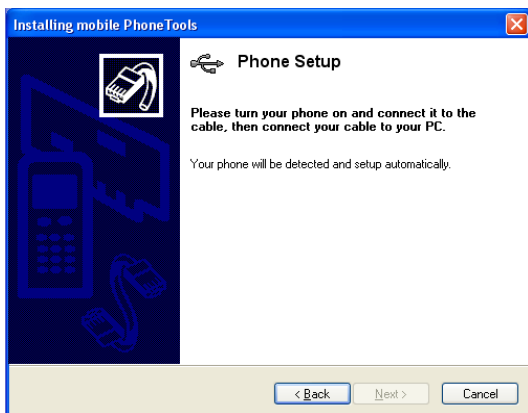
Please do not connect your mobile or your mobile device to your PC until instructed to do so by the MPT software installation wizard.

1. Select your user profile
2. Normally your software has be setup to work automatically with your mobile phone or device, so this step is automatic. However if we do not detect the connection type we will display the phone setup wizard screen:



3. Select how you will be connecting your phone to your PC.

4. Click on Next. The following screen appears :



5. Connect your phone to your PC, your phone will be detected and setup automatically.
- The application will be launched at the end of the installation process.

Online registration

To benefit from the guarantee, free upgrades, register online with our services. The online registration wizard is automatically launched at the end of the installation process. Simply follow the instructions displayed on the screens.

Check that your Internet access is available and properly set up to ensure an automatic Internet connection.



If online registration could not be completed during installation, you can also register at any other time using **Menu > Help > Online Registration**.

Uninstalling mobile PhoneTools

1. In the Windows task bar, click the **Start** menu and select **Control Panel**.
The Control Panel window opens.
2. In the list, double-click the **Add/Remove program** option.
3. Highlight the mobile PhoneTools program group and click the **Change/Remove** button.
The uninstallation process starts.

mobile PhoneTools Main Window

With mobile PhoneTools you can share the information contained on your PC with your mobile phone. When your mobile phone is connected to your computer, you can perform the following operations:

- Place and receive calls
- Send and receive emails and SMS
- Synchronize your phonebooks and calendar
- Launch an internet session*
- Send MMS*Transfer video clips* from PC to phone and *vice versa*
- Send modified music clips* to phone from PC

***Note:**

Some of mobile PhoneTools features might not be available with your phone or device.

Press to minimize mobile PhoneTools and place its icon in the tray bar of your PC's desktop as shown below:



Double-click here to have the mobile PhoneTools window displayed.



mobile PhoneTools Function Panel

Icon description :



Note:

Some of mobile PhoneTools features might not be available with your phone or device.

Additional information

Keyboard shortcuts

F1 Online help

F3 Outbox

F4 Inbox

F5 Phonebook

F6 General Setup

F8 Transmission logbook

F9 Reception logbook

F10 Menu

Websites

Please visit our website to obtain the latest information on our products and available upgrades:

<http://www.bvrp.com>

Copyright and trademarks

© 2001-04 BVRP Software. All rights reserved.

mobile PhoneTools is a registered trademark of BVRP Software S.A.

All product names mentioned in this document are trademarks or registered trademarks of their respective owners.