

## Annex C Photo documentation

Appendix to Test Report No.: 1-8866/19-03-20



### Testing Laboratory

#### CTC advanced GmbH

Untertürkheimer Straße 6 – 10

66117 Saarbrücken/Germany

Phone: + 49 681 5 98 - 0

Fax: + 49 681 5 98 - 9075

Internet: <http://www.ctcadvanced.com>

e-mail: [mail@ctcadvanced.com](mailto:mail@ctcadvanced.com)

#### Accredited Test Laboratory:

The testing laboratory (area of testing) is accredited according to DIN EN ISO/IEC 17025 (2005) by the Deutsche Akkreditierungsstelle GmbH (DAkkS)

The accreditation is valid for the scope of testing procedures as stated in the accreditation certificate with the registration number: D-PL-12076-01-03

Photo 1: Measurement System DASY 5



Photo 2: DUT - Front view

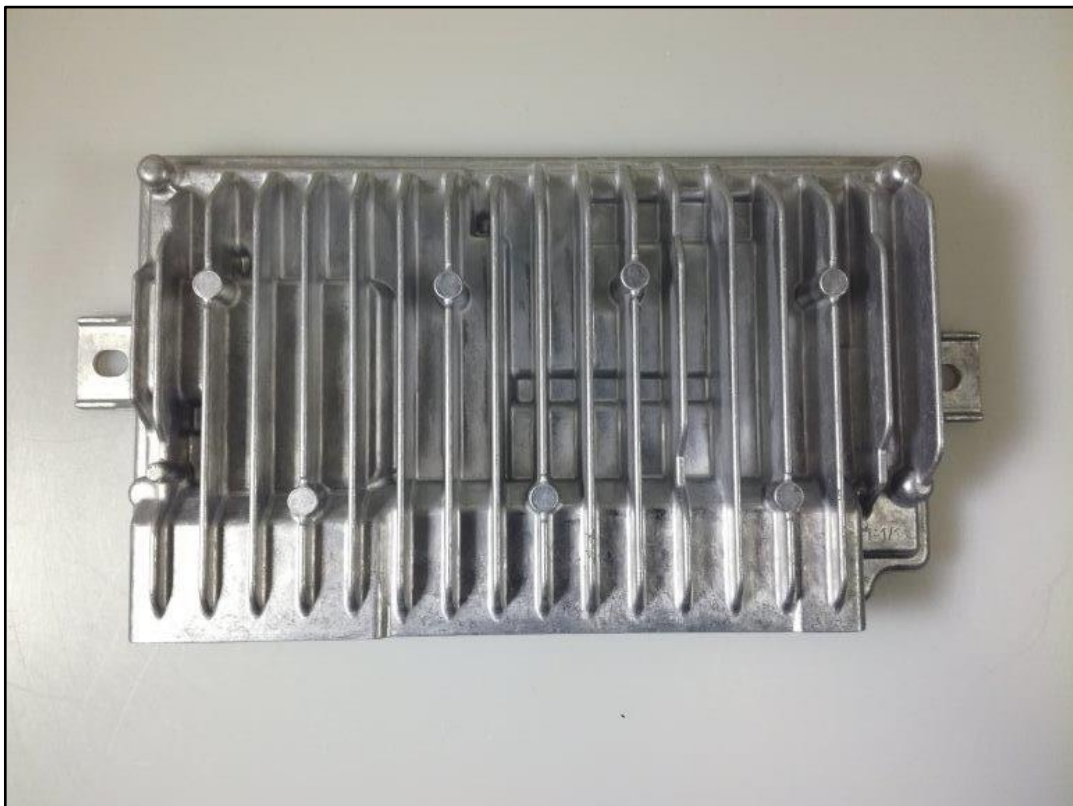


Photo 3: DUT - Side view (Label)



Photo 4: DUT - Side view (Connectors)



Photo 5: DUT - Rear view (Label)



Photo 6: DUT - Rear view (Label)





Photo 7: DUT - Rear view (Connectors) + Programmer PCB

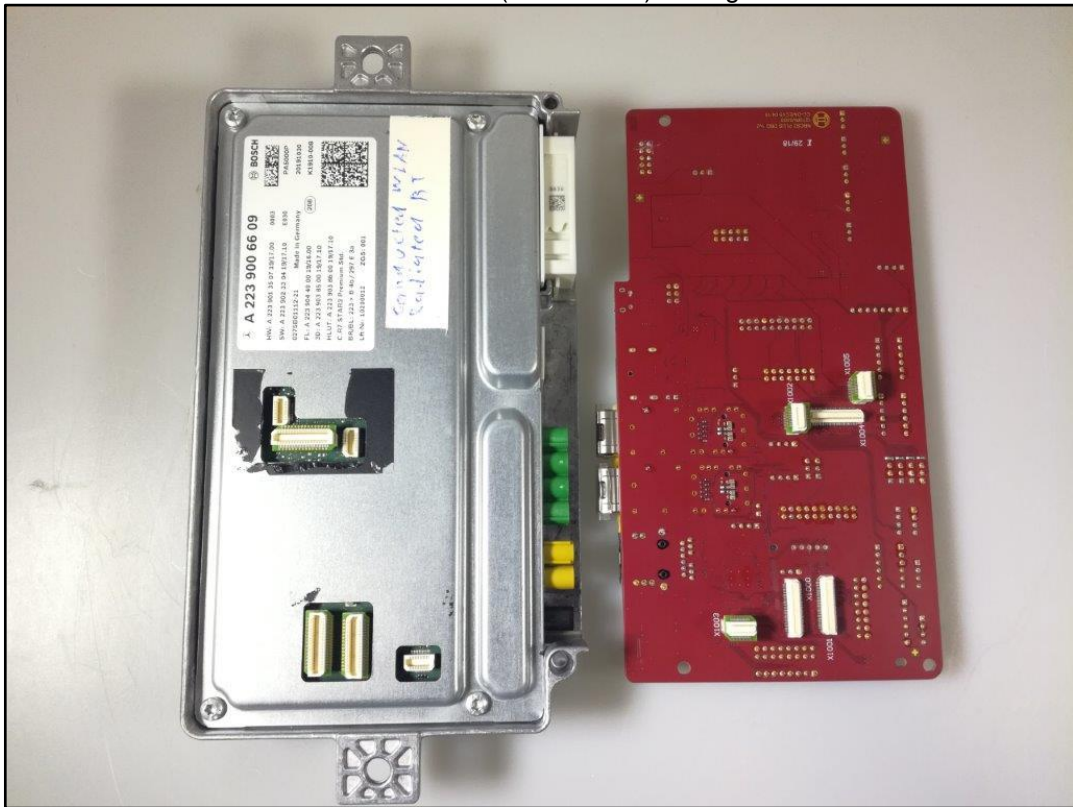


Photo 8: DUT - Rear view (+ programmer PCB attached)



Photo 9: Use position as foreseen by the manufacturer:  
> **15mm** distance between antenna and the brown marked passenger compartment

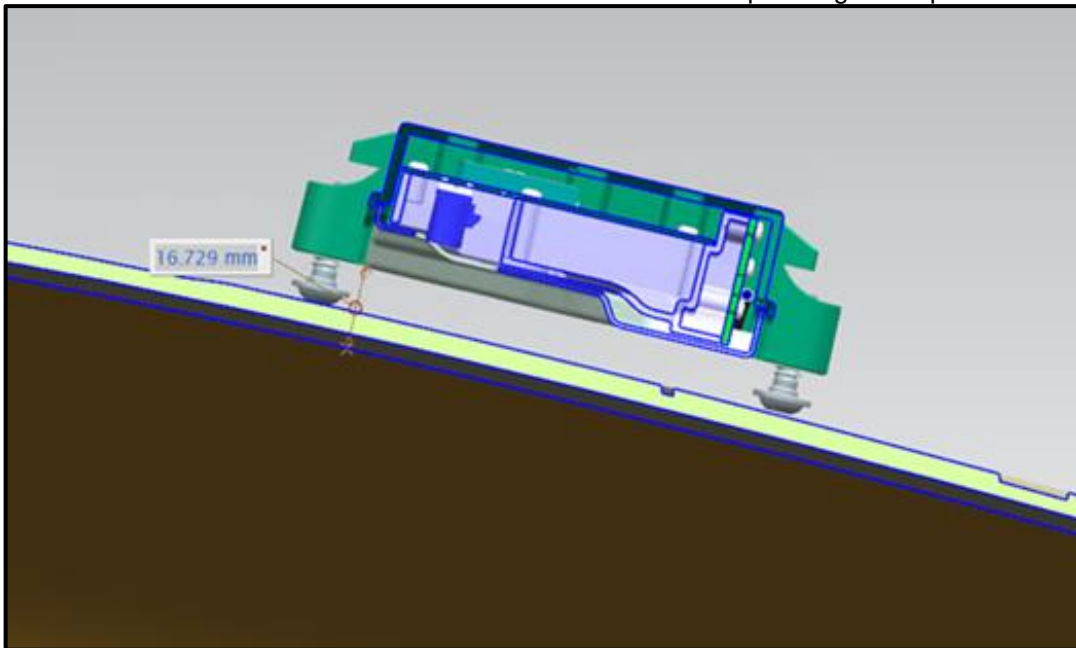


Photo 10: DUT - Antenna Type A2239059904 - Top side view



Photo 11: DUT - Antenna Type A2239059904 - Bottom side view

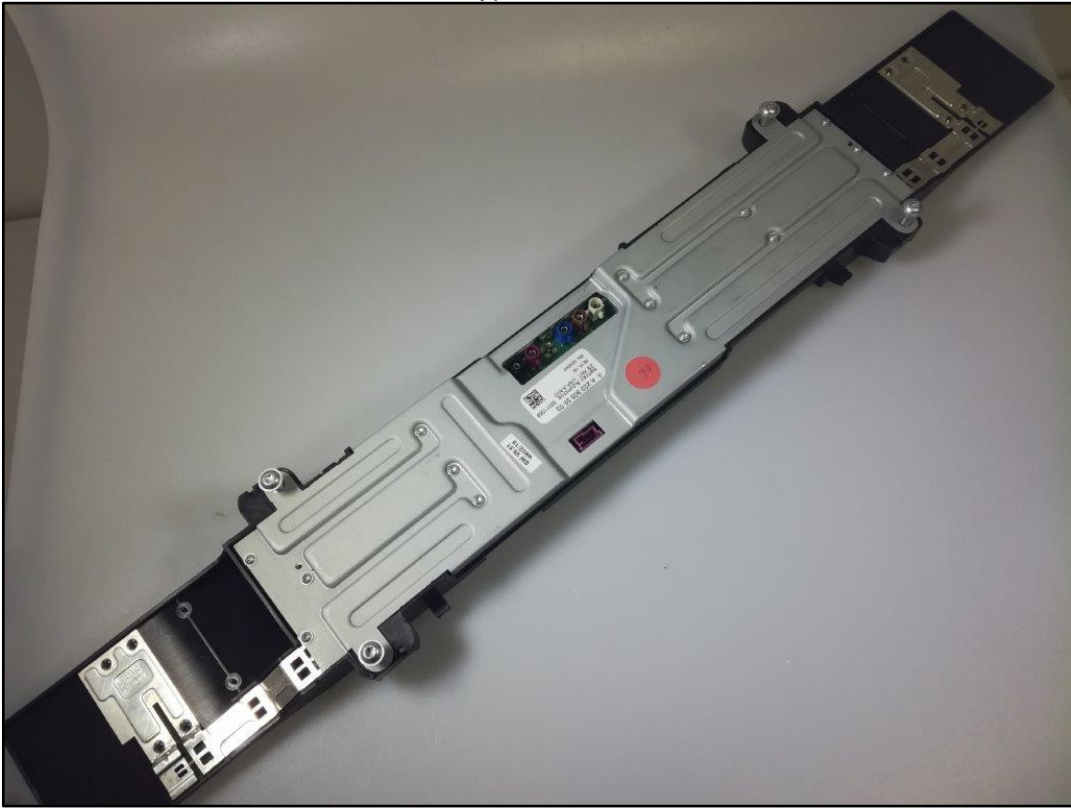


Photo 12: DUT - Antenna Type A2239059904 - Bottom side view (Labels)

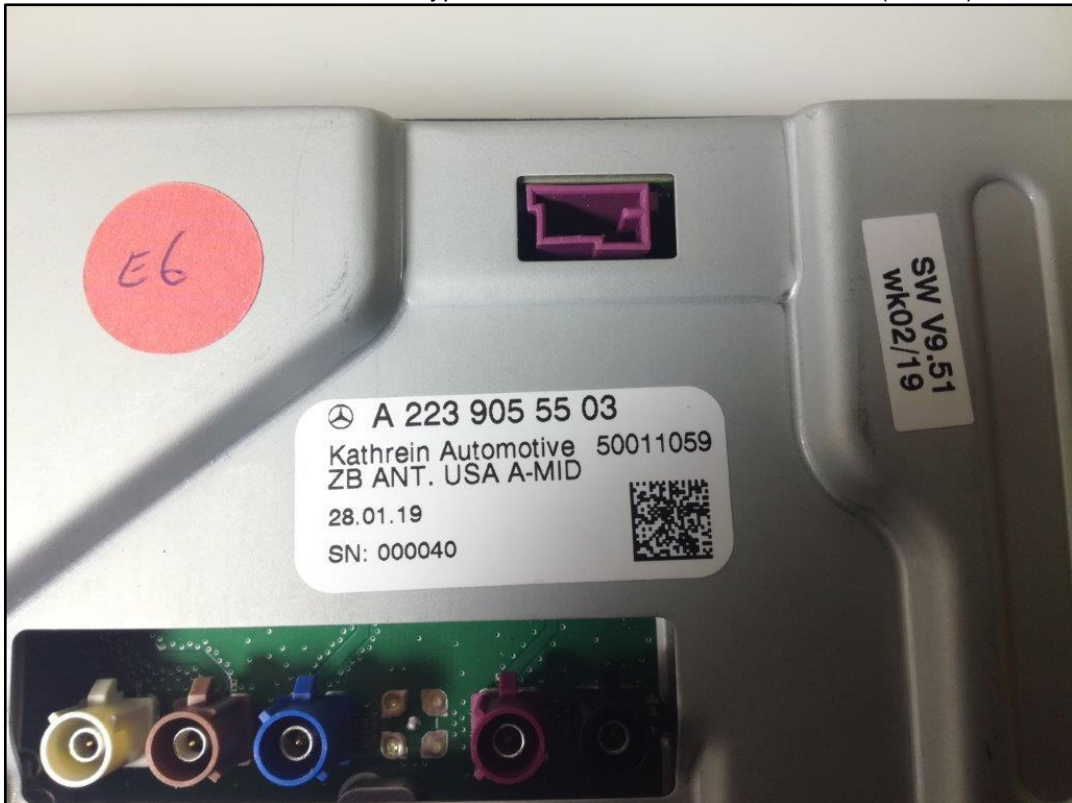




Photo 13: DUT - Antenna Type A2239059904 - Bottom side view  
(Cable attached - approximately 15mm measurement distance)

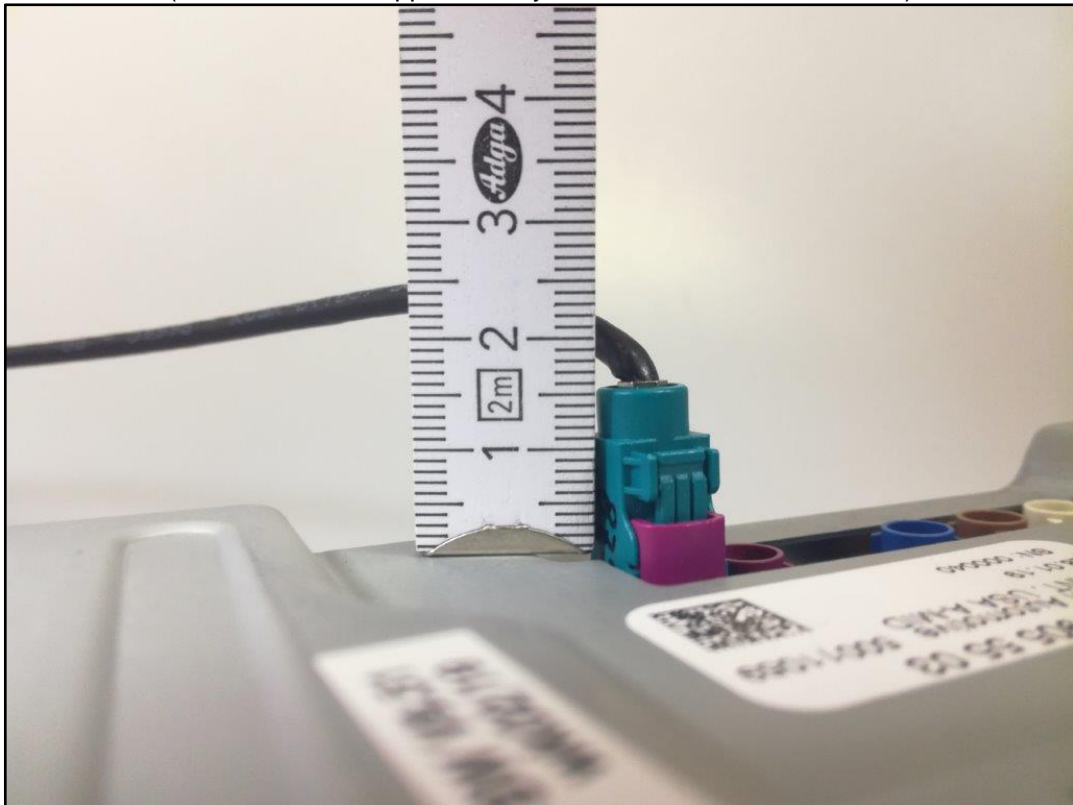


Photo 14: Test position - Antenna Type A2239059904 - Bottom side  
(Cable attached - approximately 15mm measurement distance)





Photo 15: Test position - Antenna Type A2239059904 - Bottom side  
(Cable attached - approximately 15mm measurement distance)



Photo 16: DUT - Antenna Type A2239055505 - Top side view



Photo 17: DUT - Antenna Type A2239055505 - Bottom side view  
(Cable attached - approximately 15mm measurement distance)

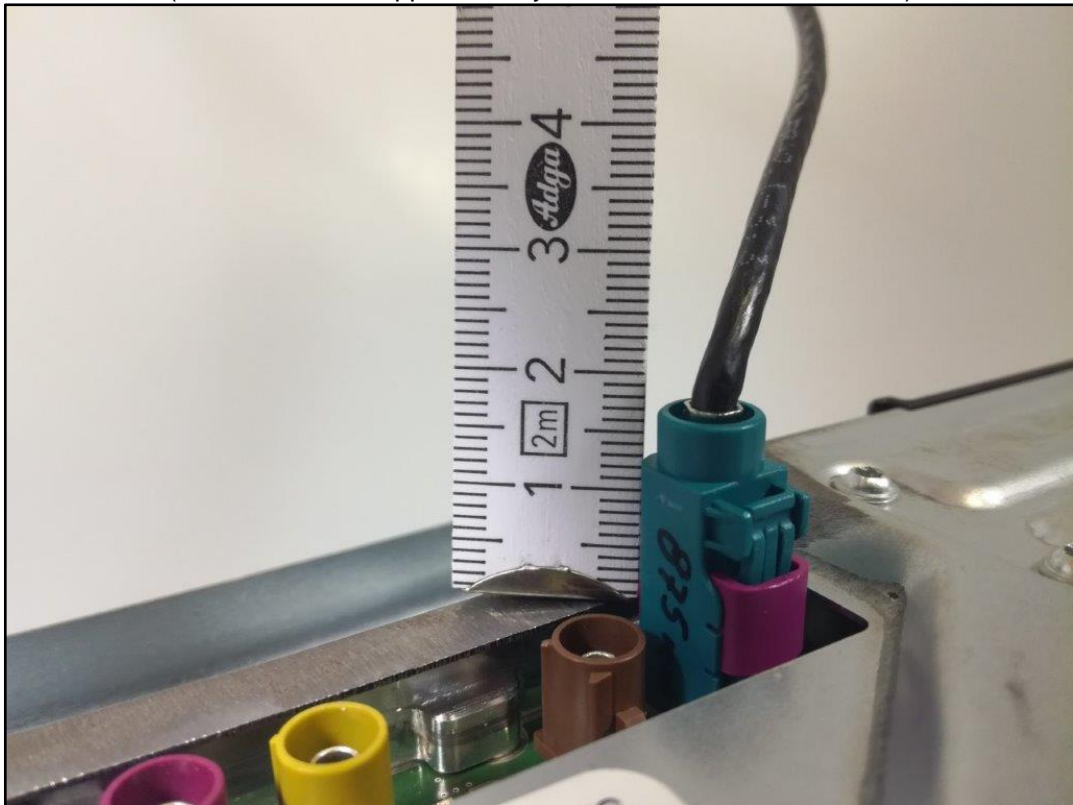


Photo 18: Test position - Antenna Type A2239055505 - Bottom side  
(Cable attached - approximately 15mm measurement distance)

