

## 4 RF interface of CR5CBCC

### 4.1 Antenna configuration/ structure

The CR5CBCC sensor has two independent transmission channels (TX1, TX3). CR5CBCC antenna layout is depicted below:

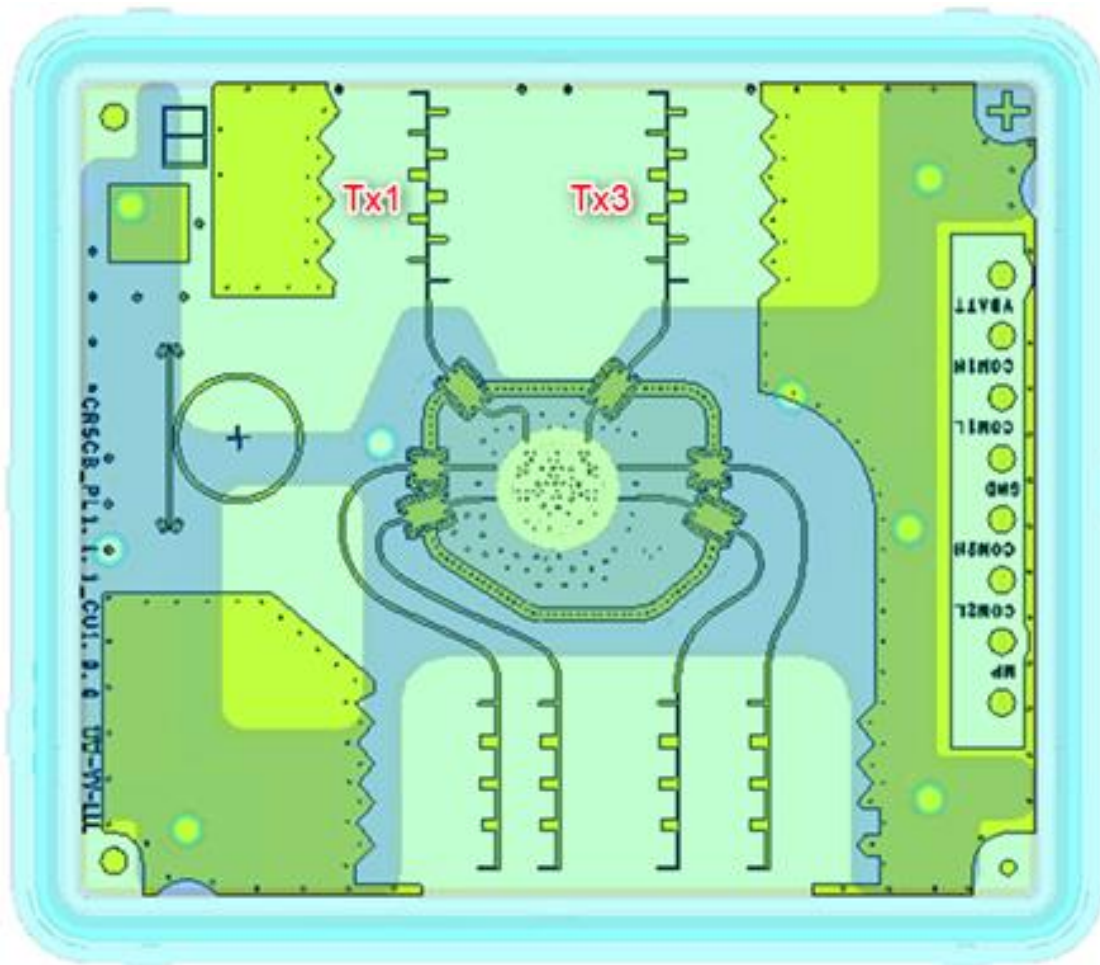
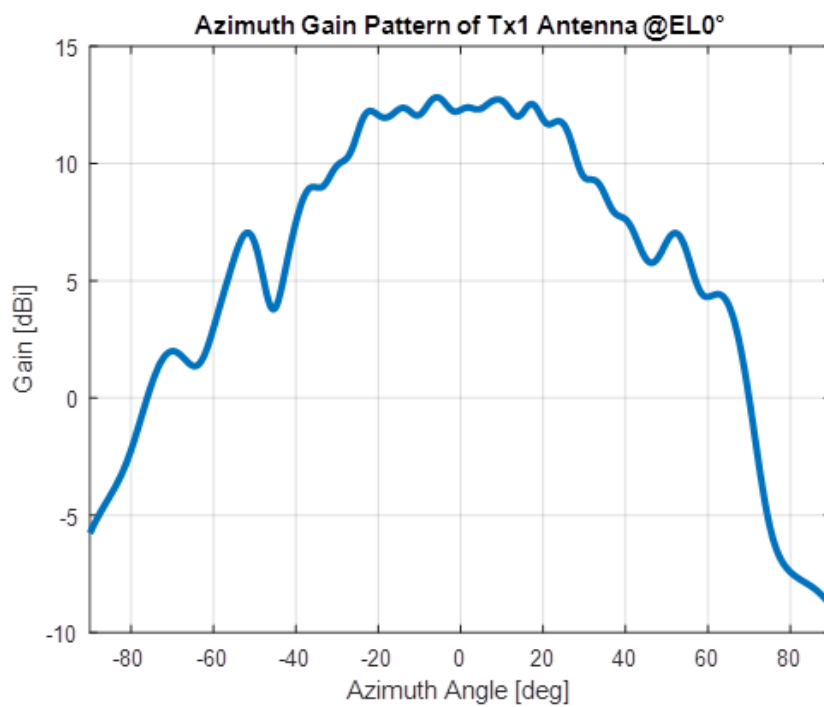


Figure 5: CR5CBCC Antenna layout

## 4.2 Antenna characteristics

### 4.2.1 TX1 antenna characteristic

Simulation result of TX1 azimuth antenna characteristic is presented below:

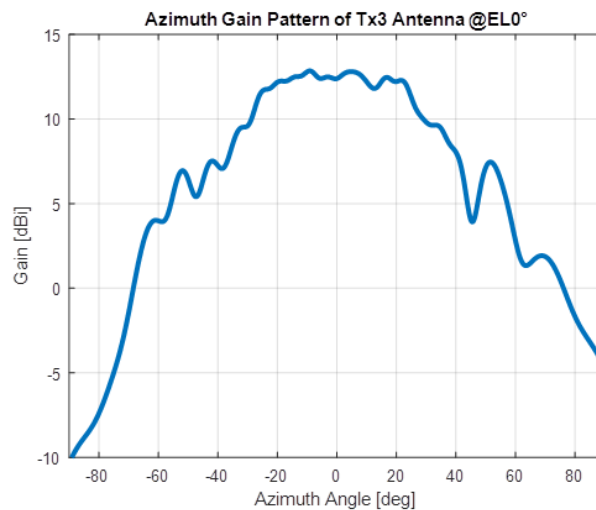


**Figure 6: CR5CBCC TX1 antenna characteristics**

Maximum gain is 12,9 dBi at angle 0°.

## 4.2.2 TX3 antenna characteristics

Simulation result of TX3 azimuth antenna characteristic is presented below:



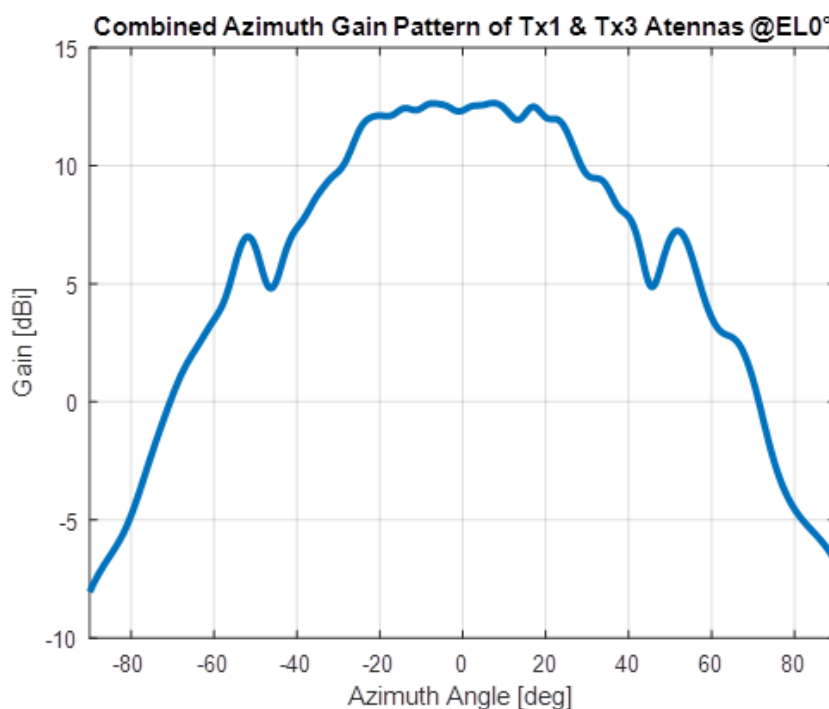
**Figure 7: CR5CBCC TX3 antenna characteristics**

Maximum gain is 13,1 dBi at angle 0°.

## 4.2.3 TXall antenna characteristics

Simulation result of all channels (TX1, TX3) combined azimuth antenna characteristic is presented below:

**Figure 8: CR5CBCC All TX antenna characteristics**



Maximum gain is 13.01 dBi @Az0°