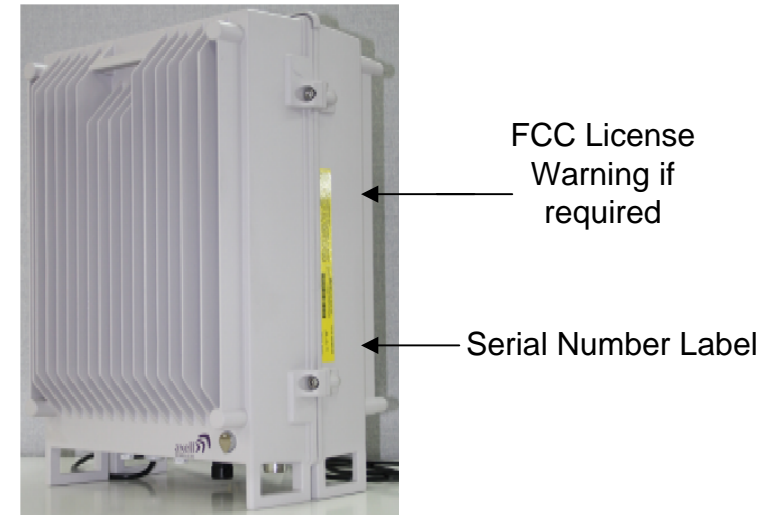


- 1) MBF40 Series Repeater Product labels are generated using the Axell Serial Information System (ASIS) Serial Numbers are assigned according to Part Number and stored in an Electronic database
- 2) Label templates are designed and attached to each Part Number record in the database. Templates contain Frequency Band Information and FCC Identification. This information is locked to the Part Number by the database.
- 3) Production Operators have read only access to the database. Part Numbers, Label Templates and their contents are controlled by Axell Engineering and Configuration management.
- 4) To generate a new serial number login to ASIS (password required) and select Serial Numbers tab. Select the New Button. Enter Operator ID, Part Number and Qty of Labels to generate. Press OK button. Serial Numbers will be generated and added to database.
- 5) Select Print Button, enter Operator ID, select Serial Number Range and press Next. Labels to be printed will appear on the screen which follows. Confirm the Part Number and Serial range to be printed are correct. Press Print button or Cancel. Printed Labels will be output from the defined Printer for the Label template media.
- 6) Attach the Product ID Label (yellow) to the right hand side of MBF40. Position label 5mm above the lower lid screw fixing, with bottom edge of label (Bar Code) against side step for alignment.
- 7) Attach the FCC LICENSE WARNING Label immediately adjacent to the Serial Number Label with matching text orientation as shown.

NOTE: This step is only applicable to US Variants of MBF40 series. (If required the label will print automatically)



Date: Tuesday, 18 March 2014

© Axell Wireless 2014

Aerial House
Asheridge Road
Chesham
Buckinghamshire
HP5 2QD United Kingdom

Telephone: +44 (0) 1494 777000
Facsimile: +44 (0) 1494 777002
E-Mail: sales@axellwireless.com
www.axellwireless.com



Product labelling for MBF40 Series

Not to Scale

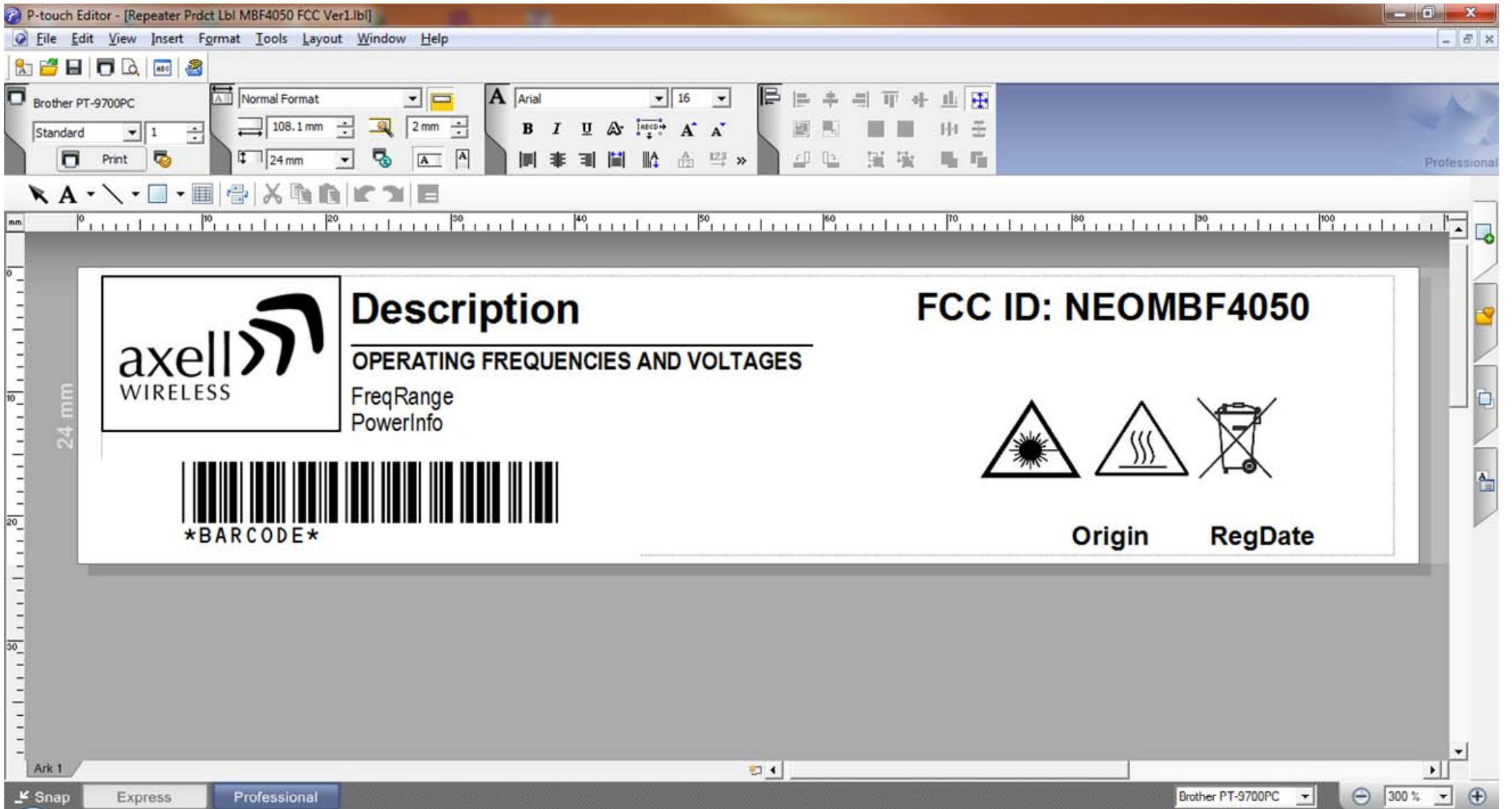
Drawn by: JRD

Issue: 1

MBF4001LB

A4

Page 1 of 2



Description

OPERATING FREQUENCIES AND VOLTAGES

FreqRange
PowerInfo

FCC ID: NEOMBF4050



BARCODE



Origin

RegDate



MBF 4317-4319 115V

FCC ID: NEOMBF4050

OPERATING FREQUENCIES AND VOLTAGES

1710-1755, 2110-2155, 1850-1910, 1930-1990 MHz
115V 8A 60Hz



MBF4050B/DARY



Made in uk 2014-01-27

WARNING. This is NOT a CONSUMER device.

It is designed for installation by FCC LICENSEES and QUALIFIED INSTALLERS. You MUST have an FCC LICENSE or express consent of an FCC LICENSEE to operate this device. Unauthorized use may result in significant forfeiture penalties, including penalties in excess of \$100,000 for each continuing violation.