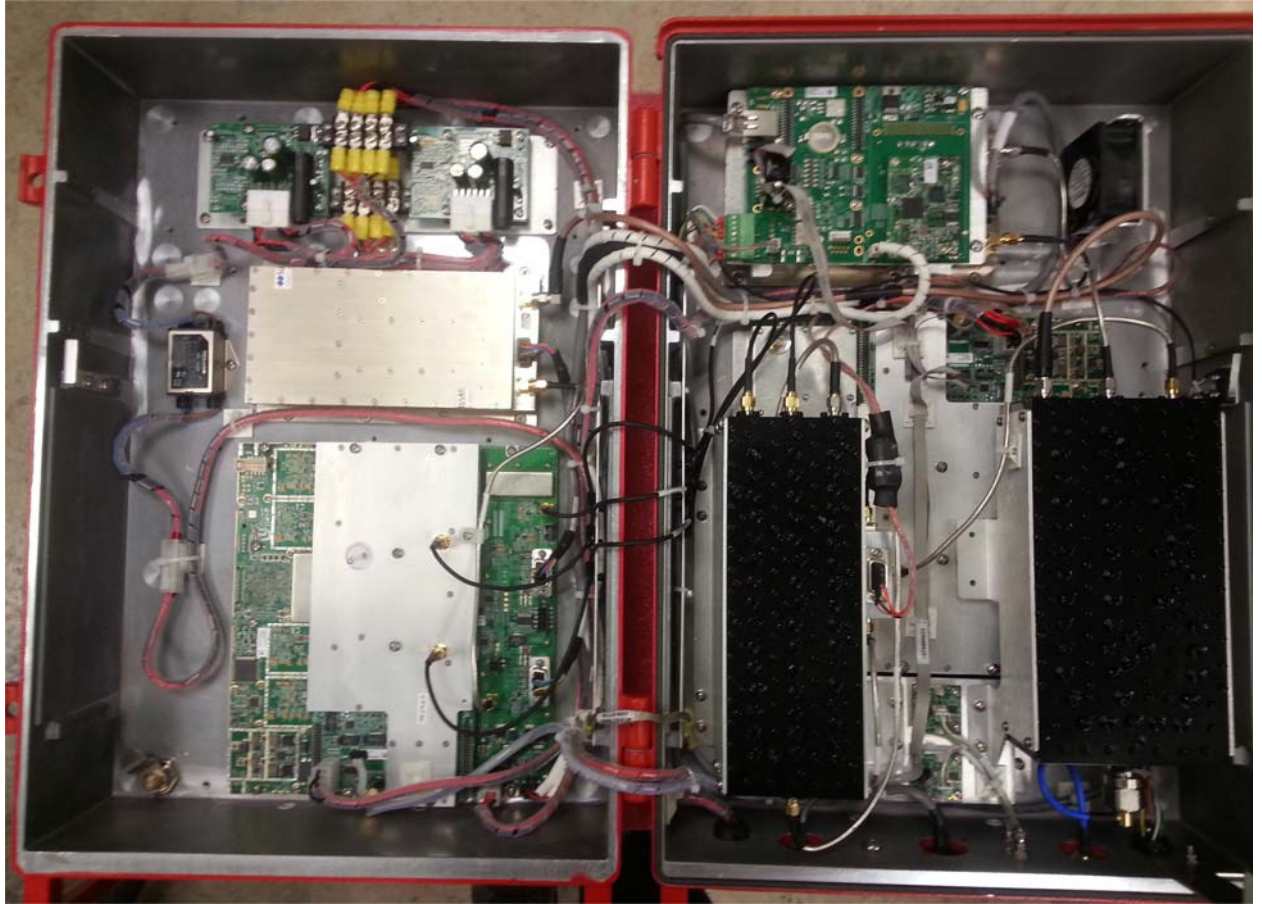


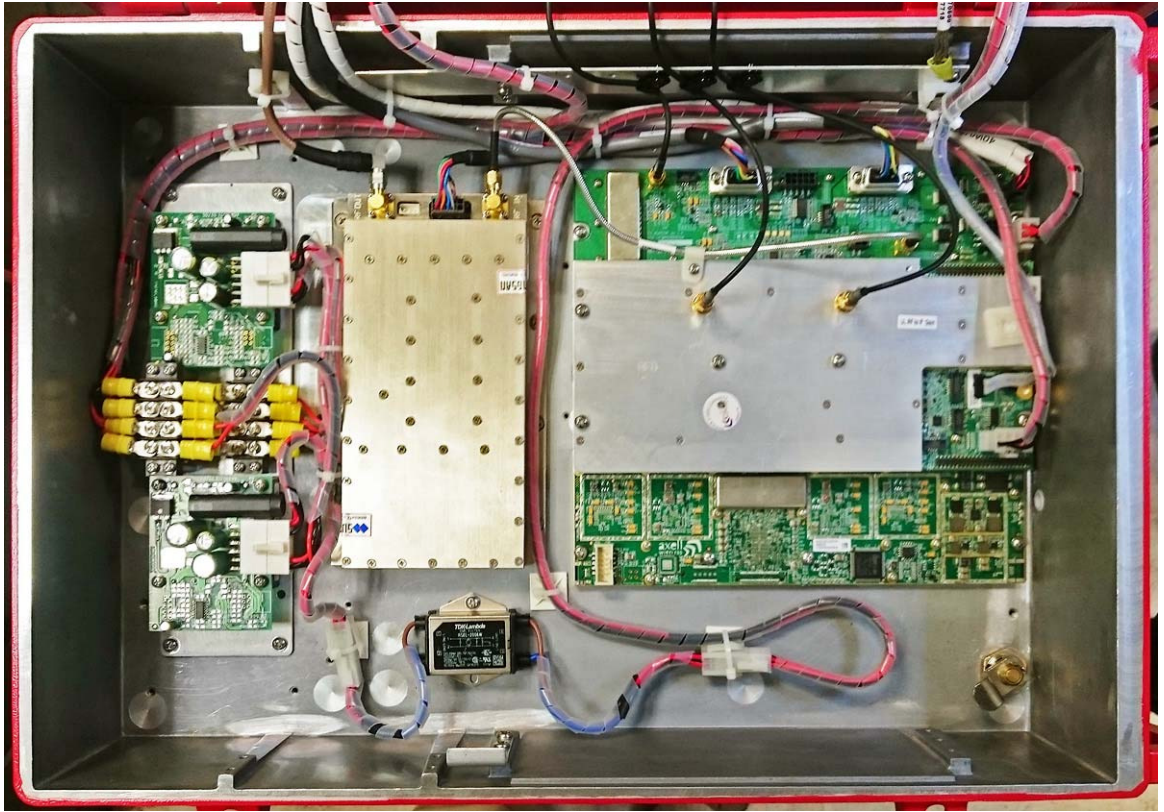
INTERNAL PHOTOGRAPHS

This document contains 26 photographs

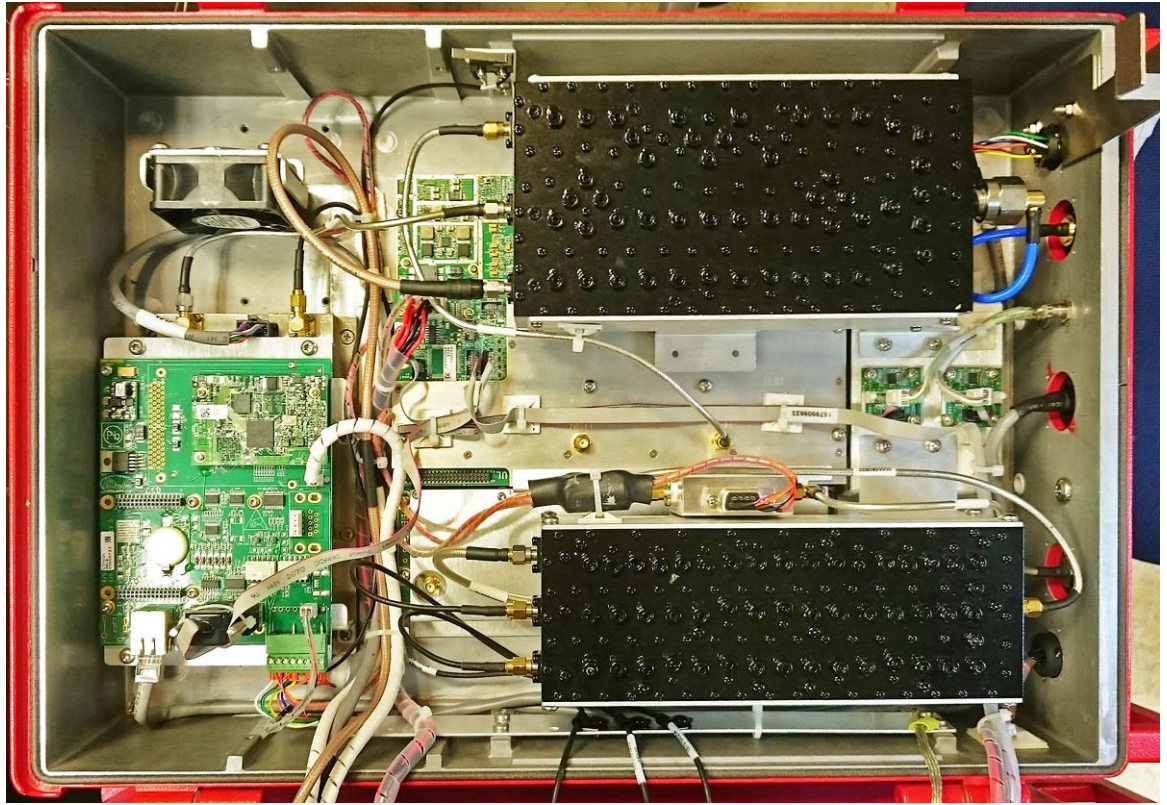
Photograph No.1
Repeater internal view



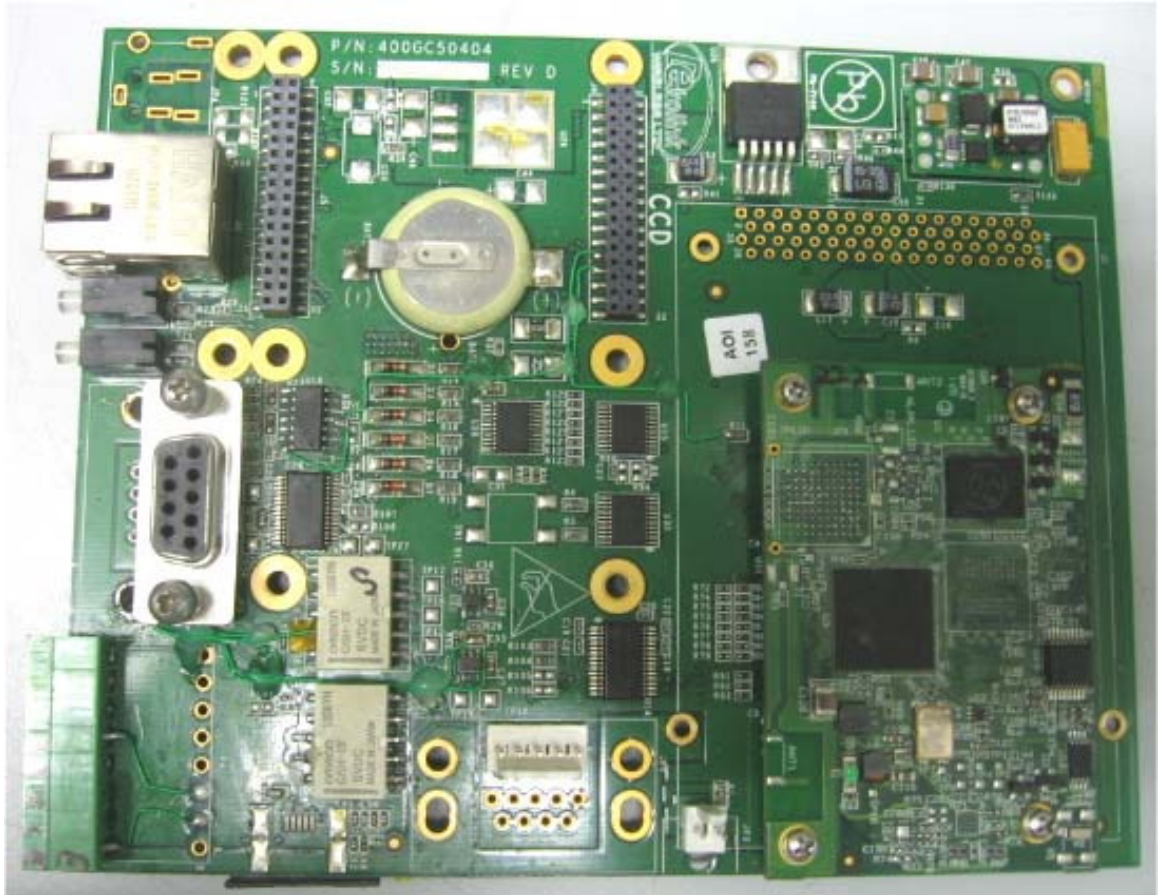
Photograph No.2
Internal close view



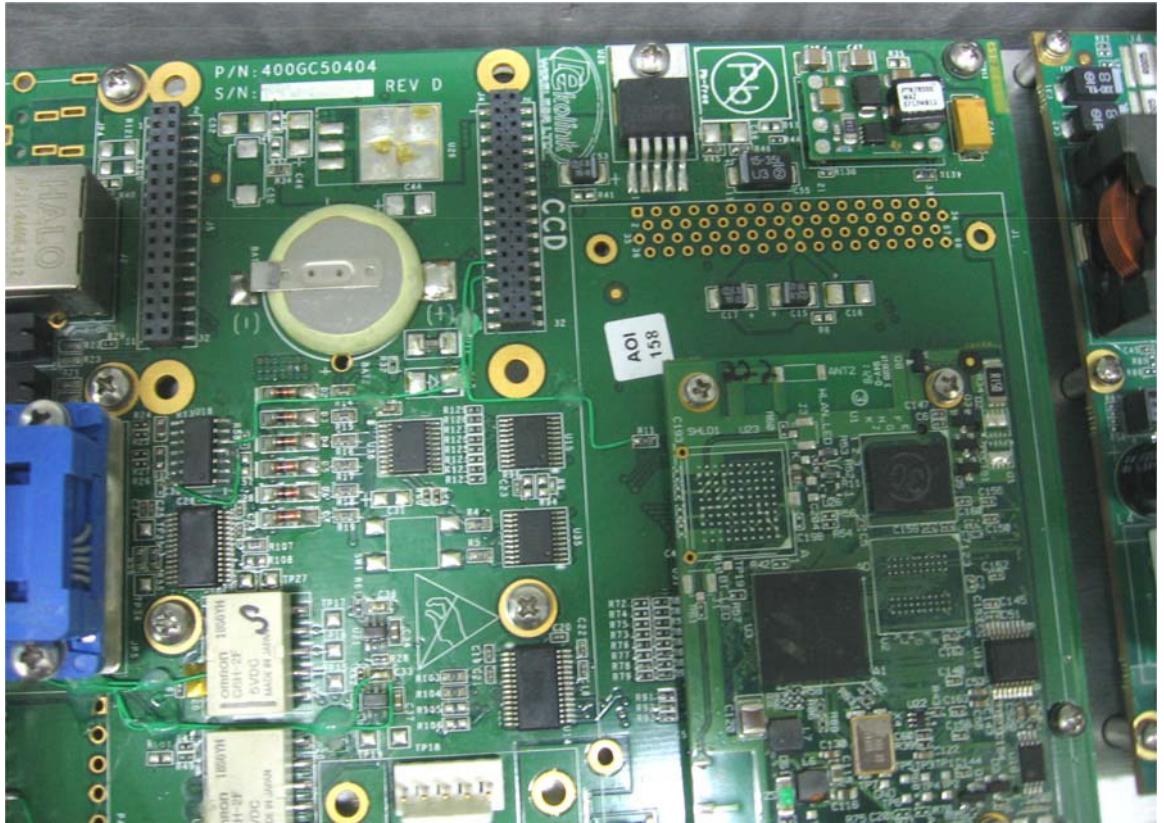
Photograph No.3
Internal close view



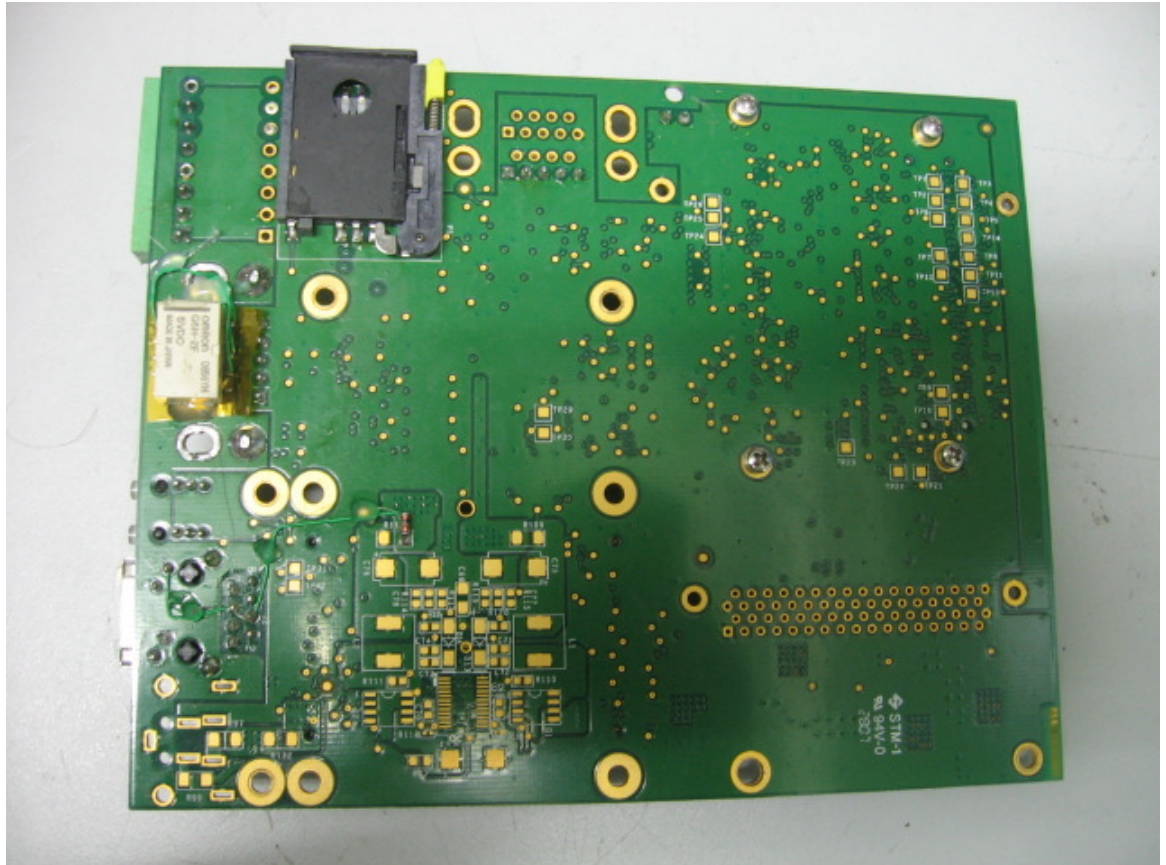
Photograph No.4
Main PCB (CCD module) front view



Photograph No.5
Main PCB (CCD module), close view



Photograph No.6
Main PCB (CCD module) second side view



Photograph No.7
RF boards



Photograph No.8
RF boards second side



Photograph No.9
RF PCB (ADEM module) front view



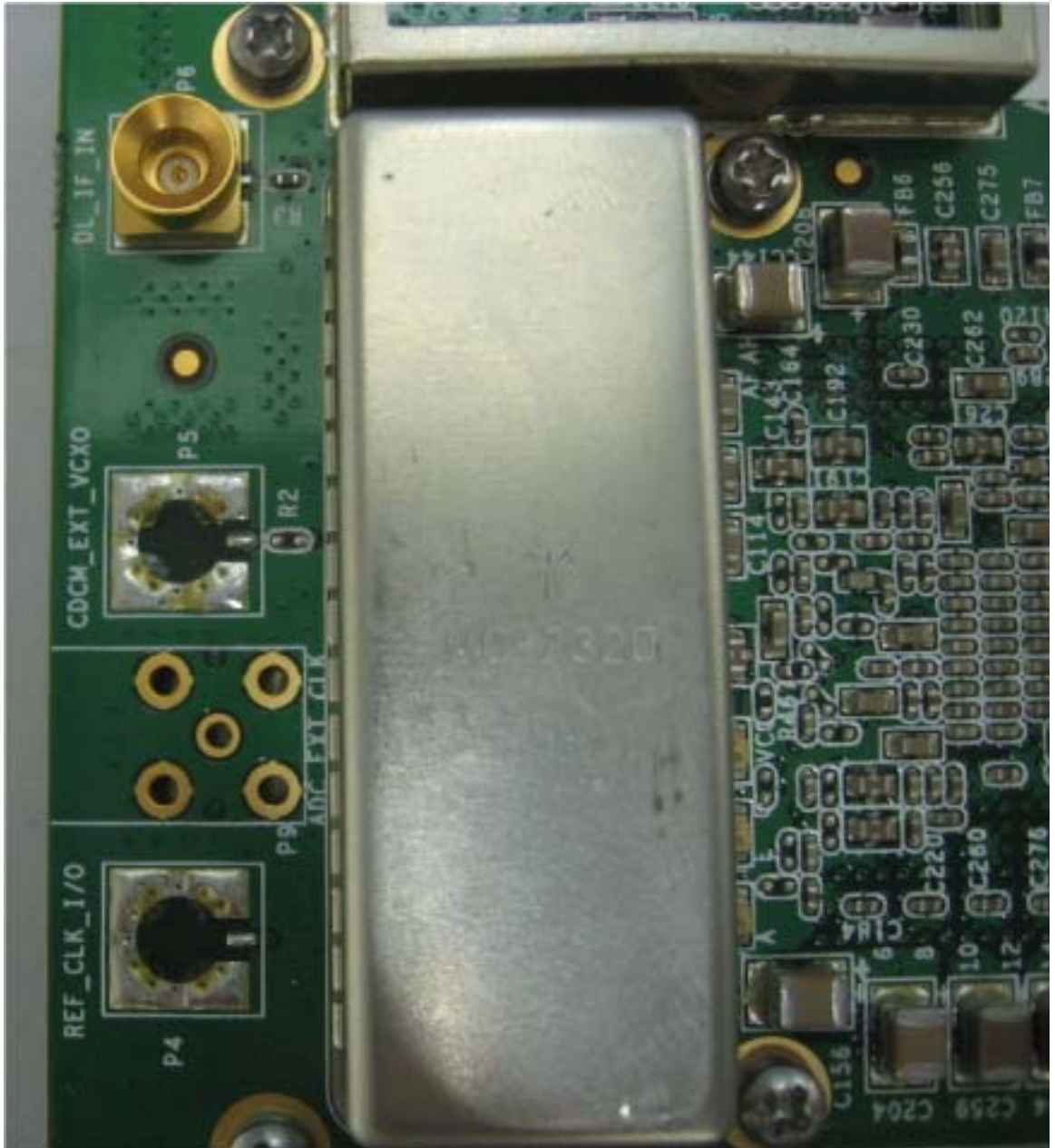
Photograph No.10
ADEM module second side



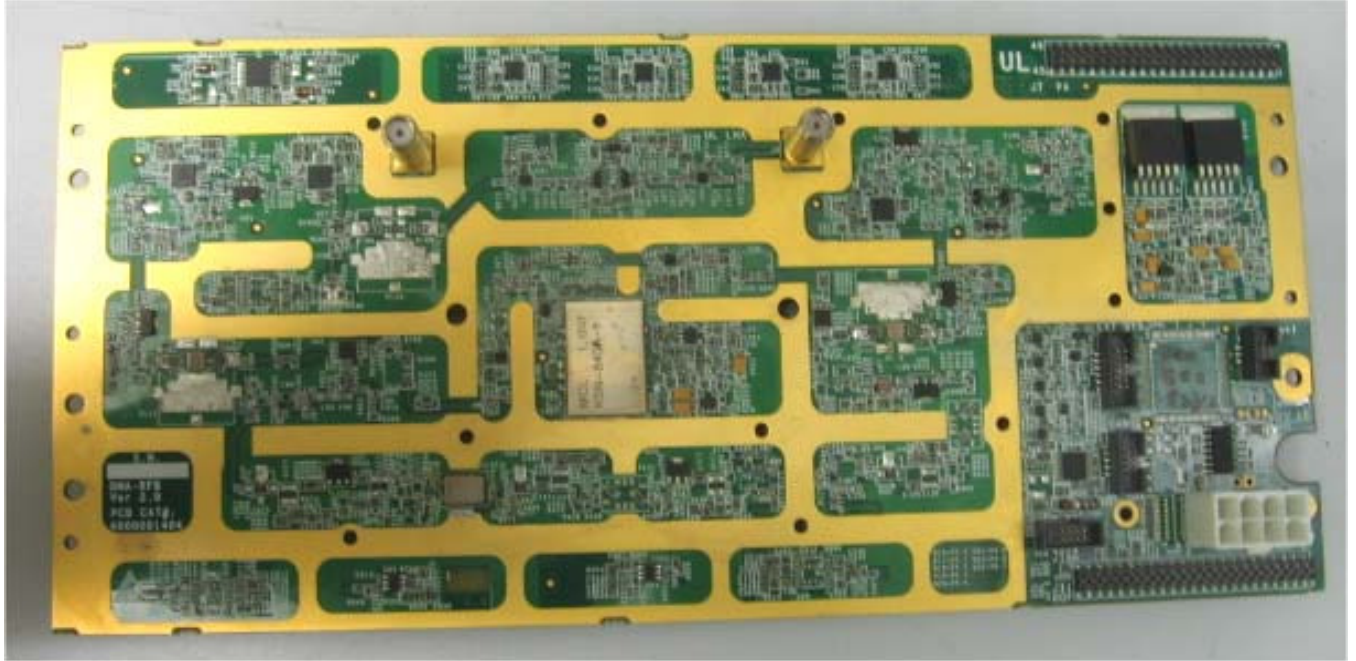
Photograph No.13
RF PCB (ADEM module) with shields removed



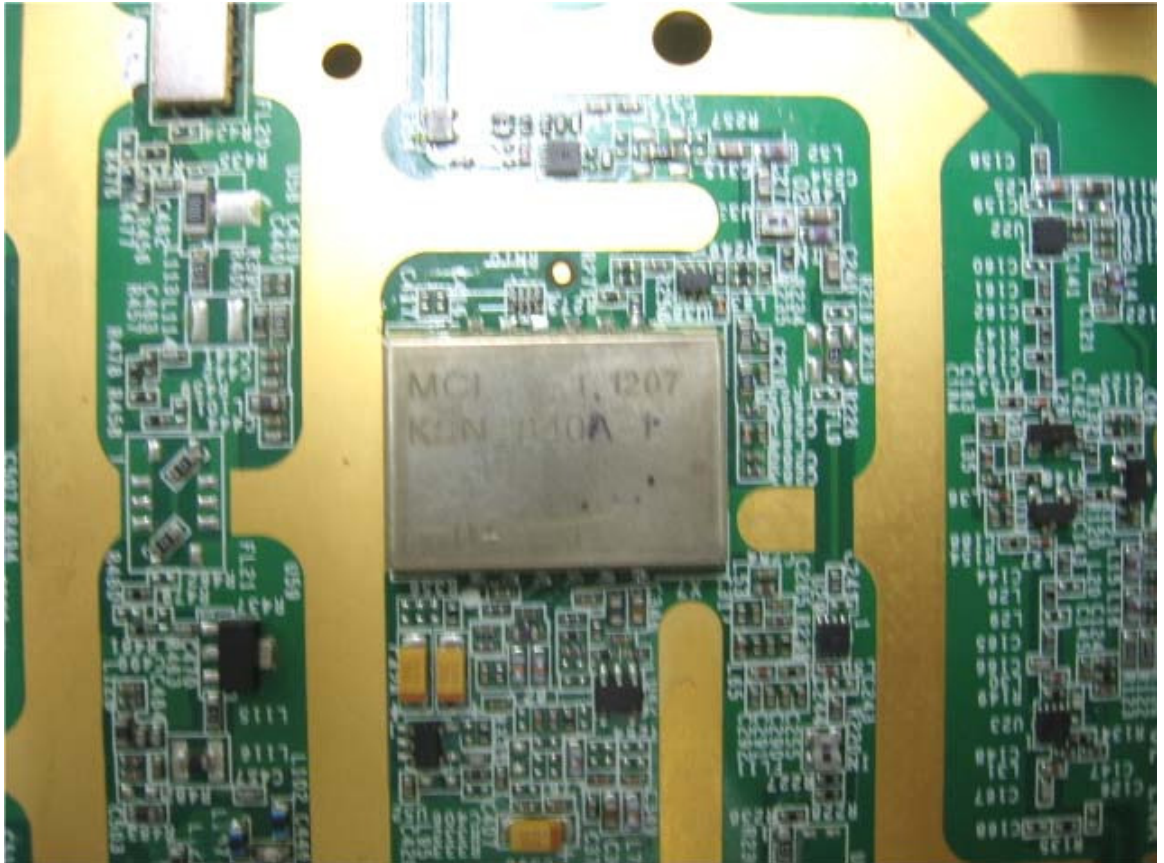
Photograph No.14
RF PCB (ADEM module) close view



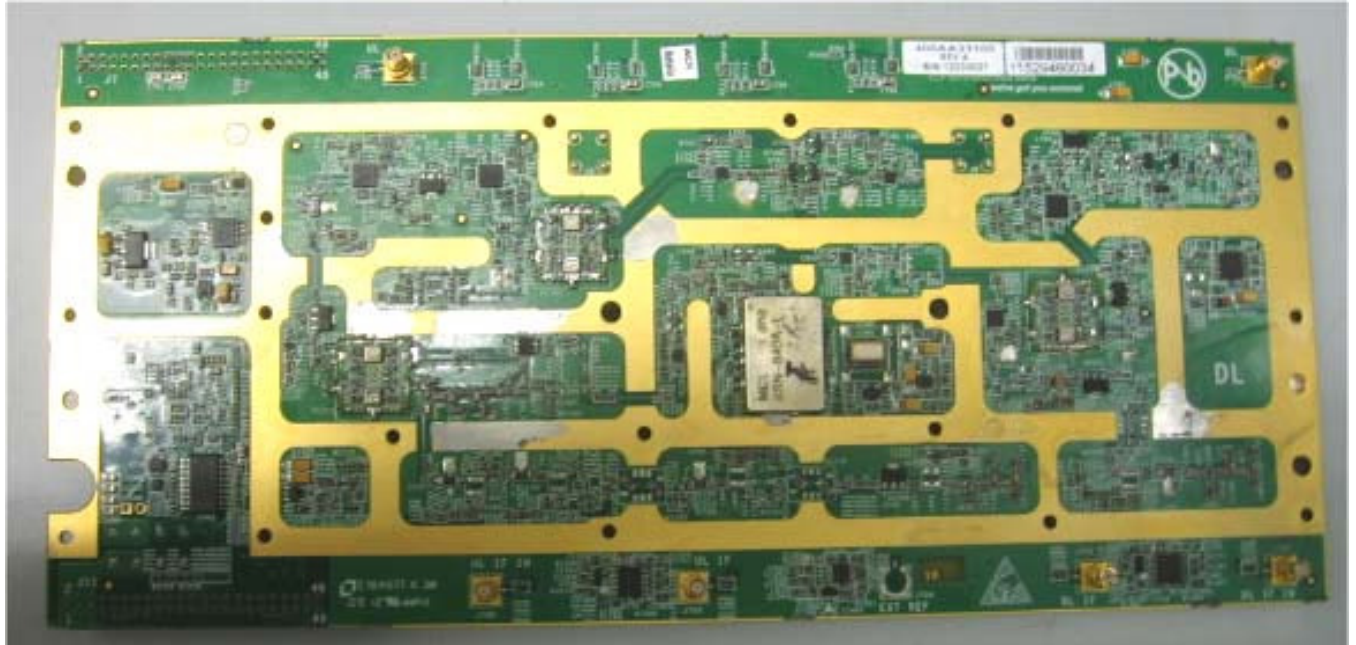
Photograph No.16
RF PCB front view



Photograph No.17
RF PCB front side, close view



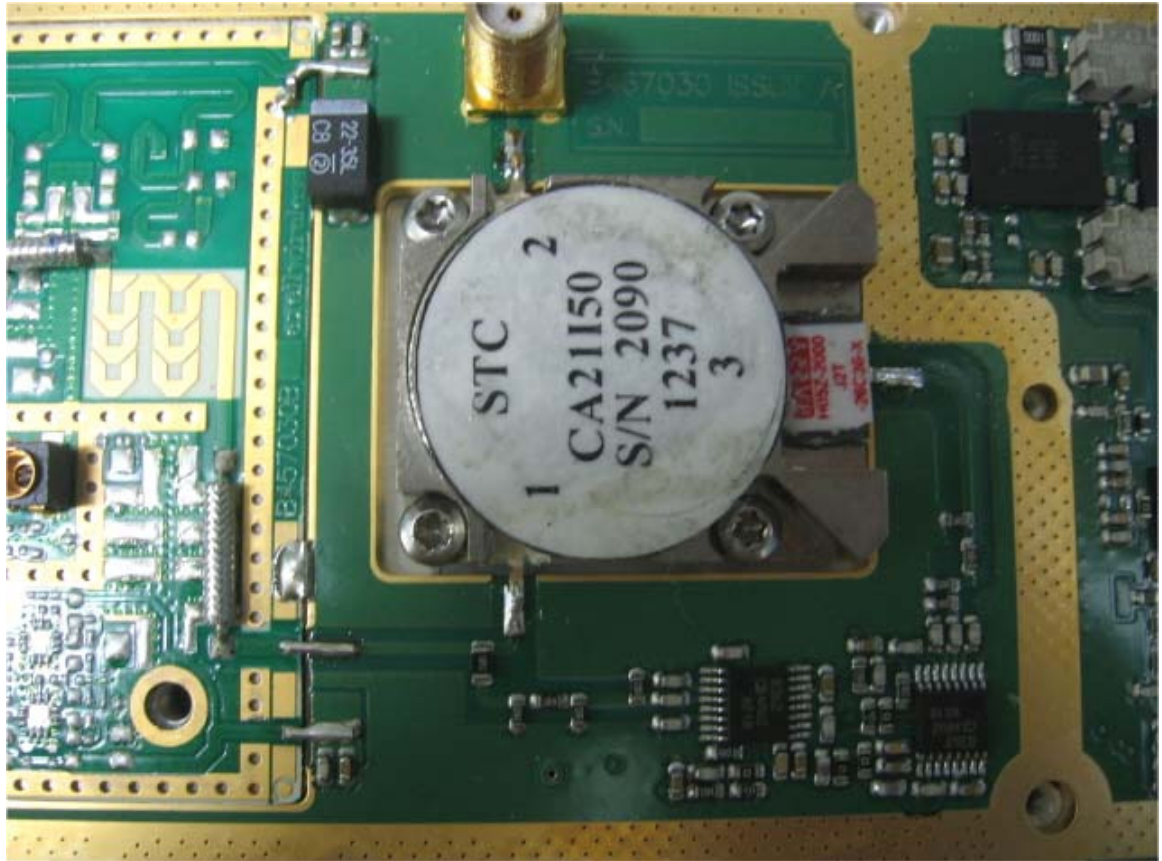
Photograph No.18
Second side of the RF PCB



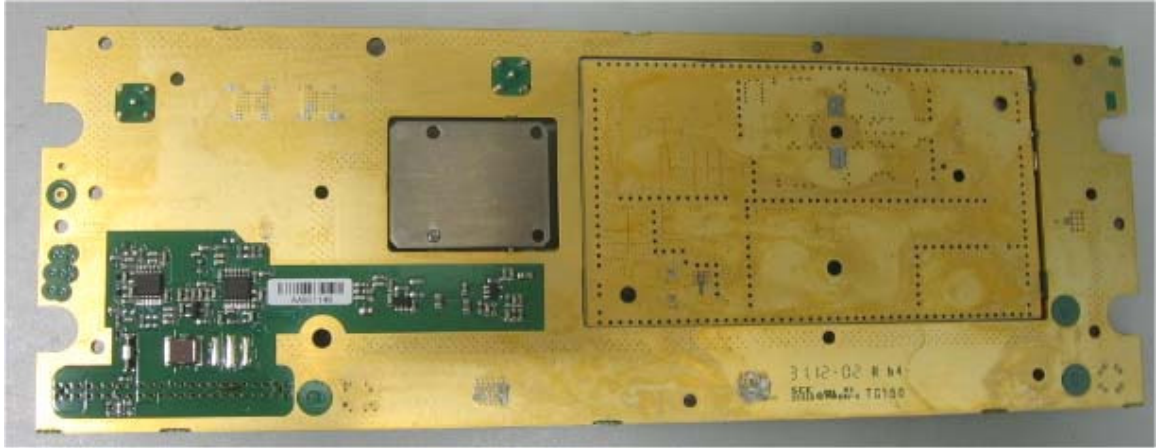
Photograph No.19
PA module front view



Photograph No.20
PA module front side, close view



Photograph No.21
PA module second side



Photograph No.22
PA module second side, close view



Photograph No.23
DC/DC convertor front view



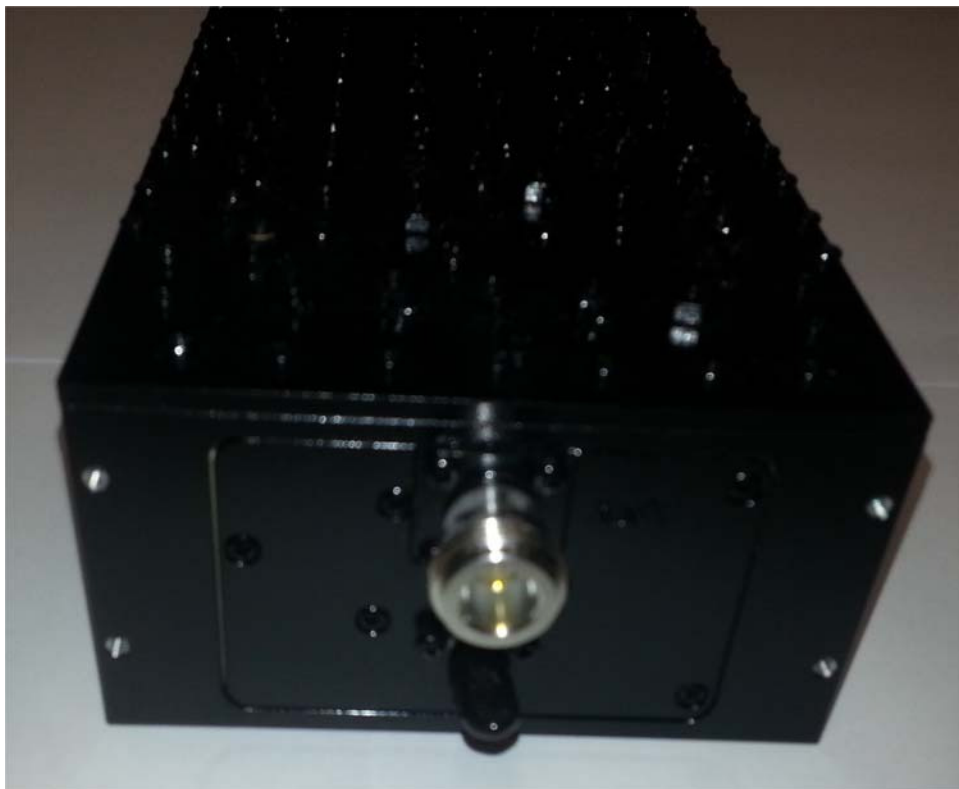
Photograph No.24
DC/DC convertor second side view



Photograph No.25
Duplexer general view



Photograph No.26
Duplexer (first side view)



Photograph No.27
Duplexer (second side view)



Photograph No.28
PA-700 MHz module front view



Photograph No.29
PA-700 MHz module bottom view



Photograph No.30
PA-800 MHz module front view



Photograph No.31
PA-800 MHz module bottom view

