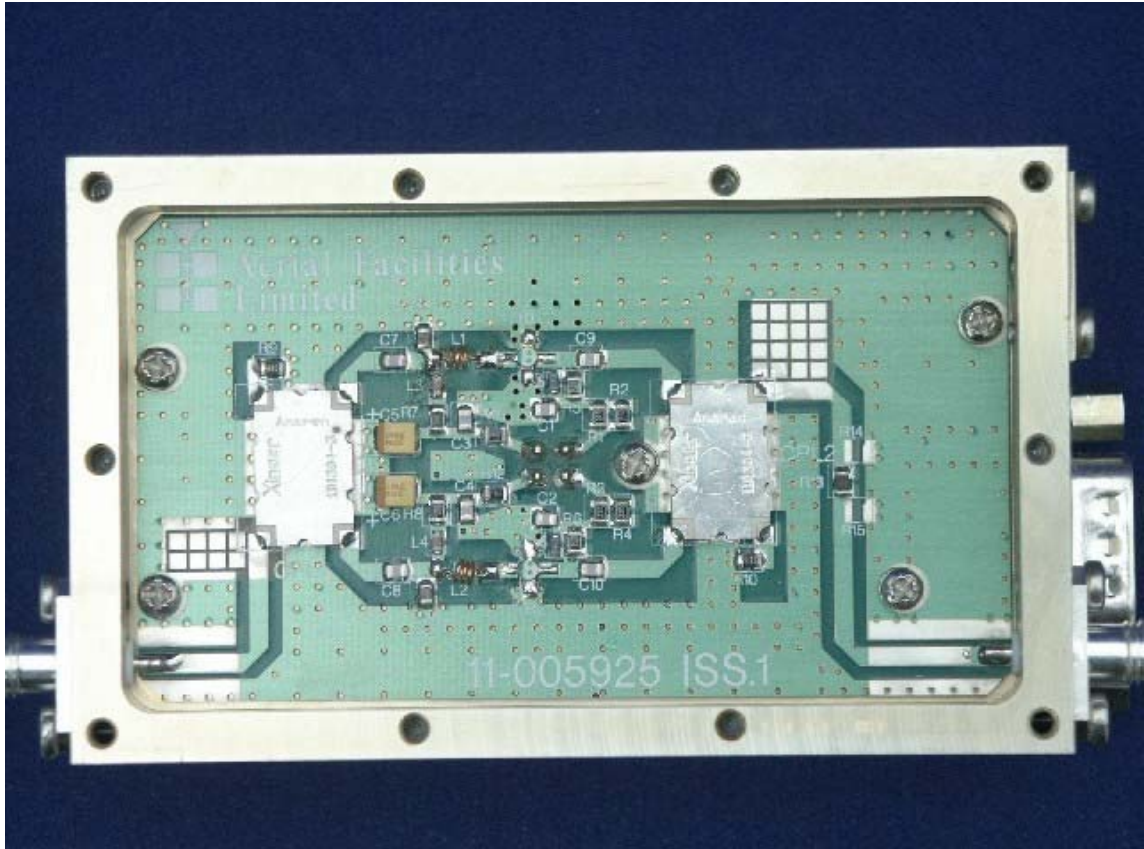
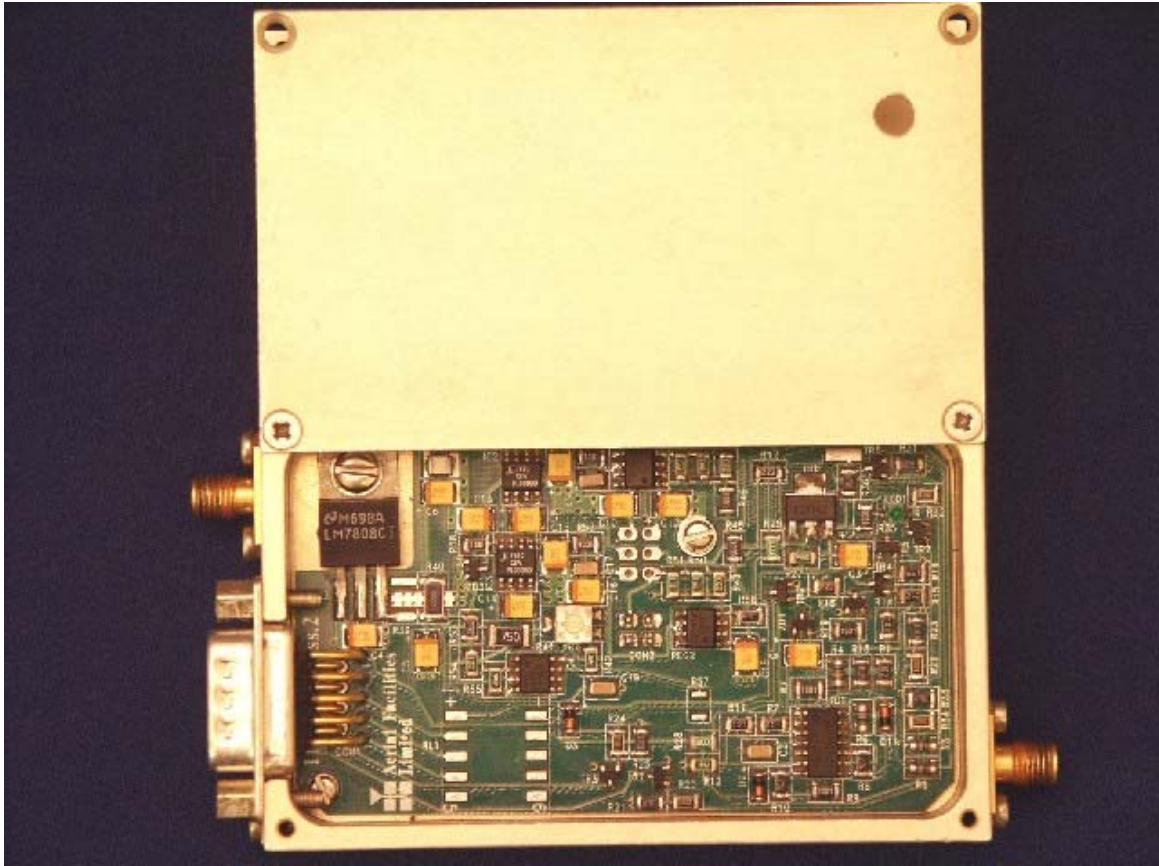


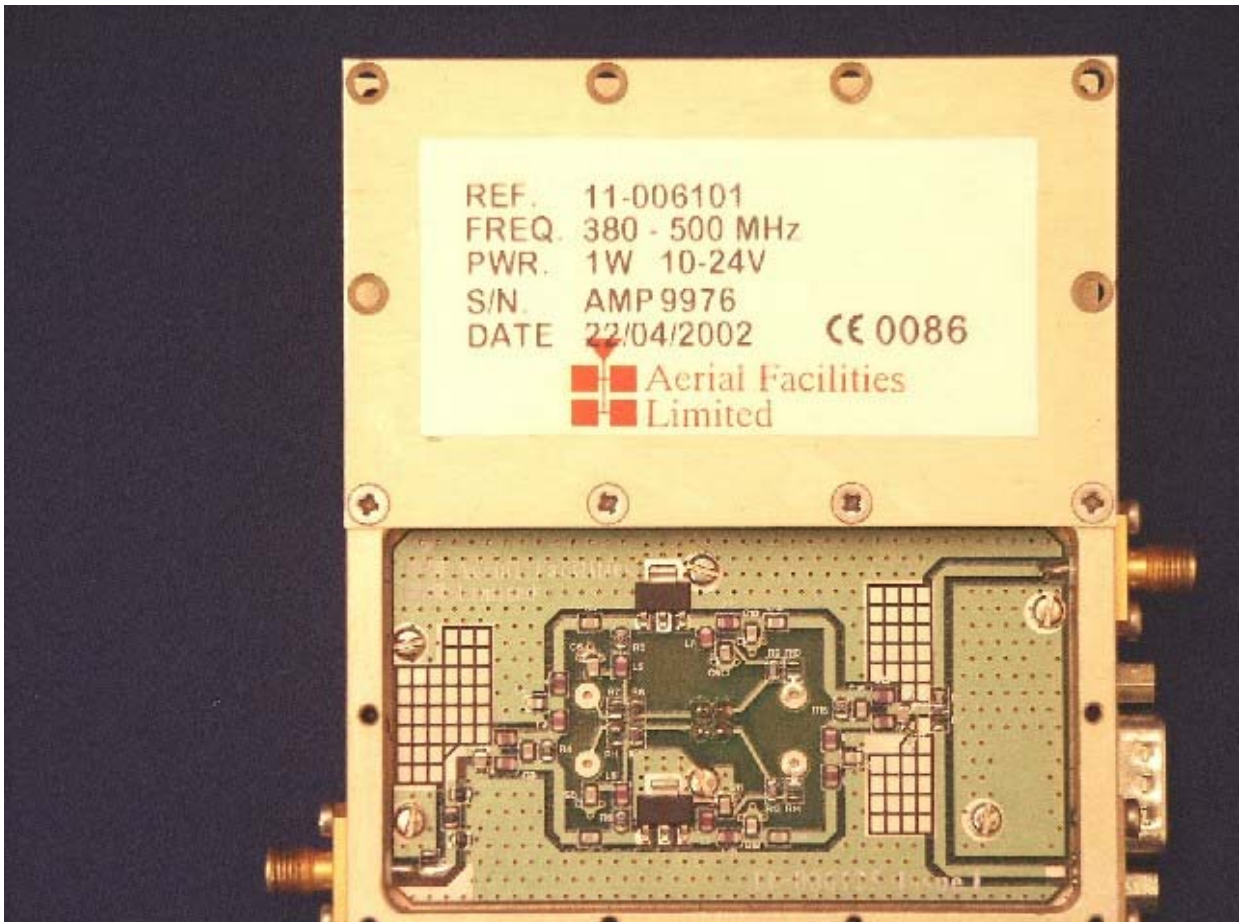
Module 115902 DC




115902 - DC



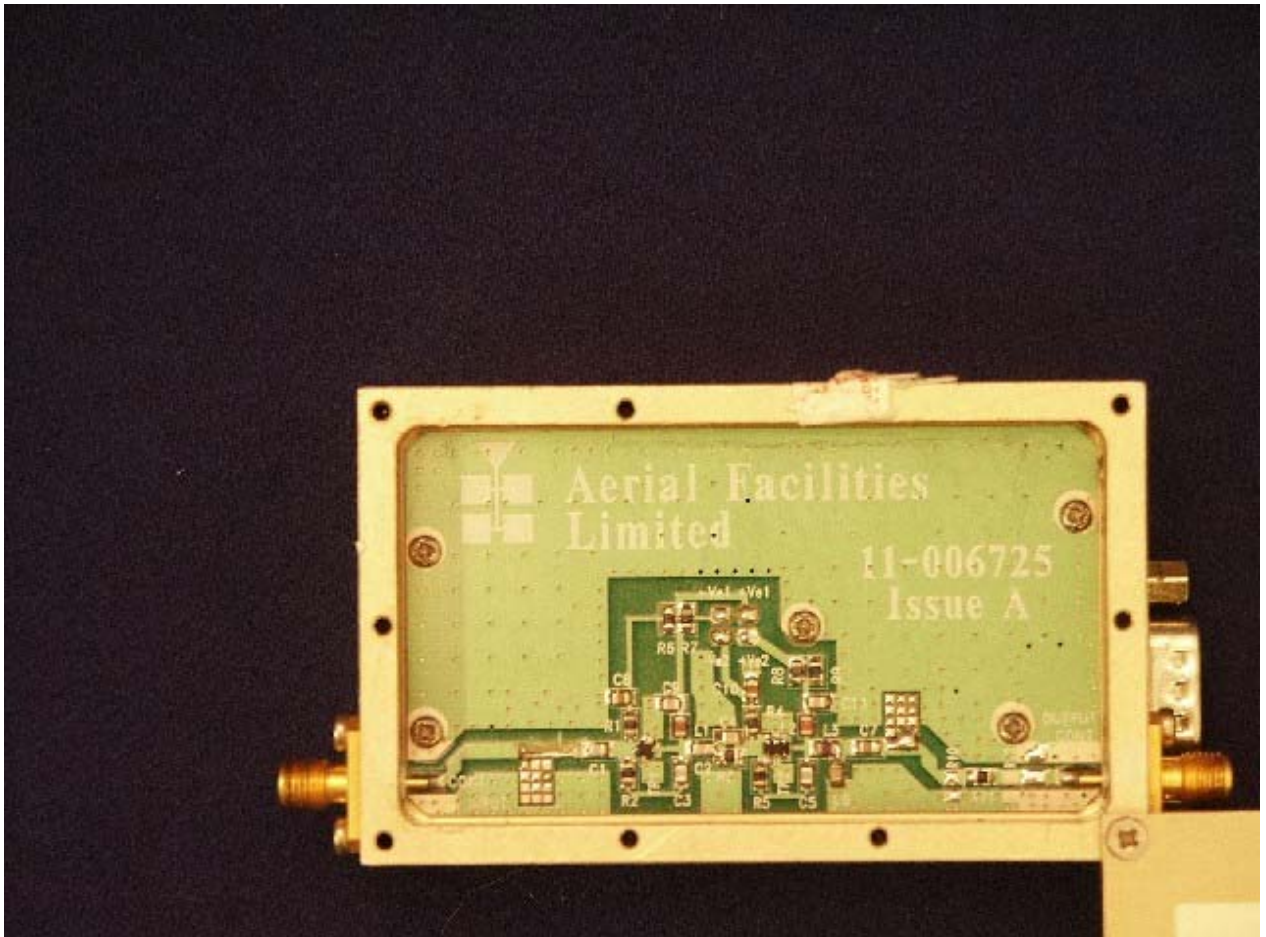
116102- - DC



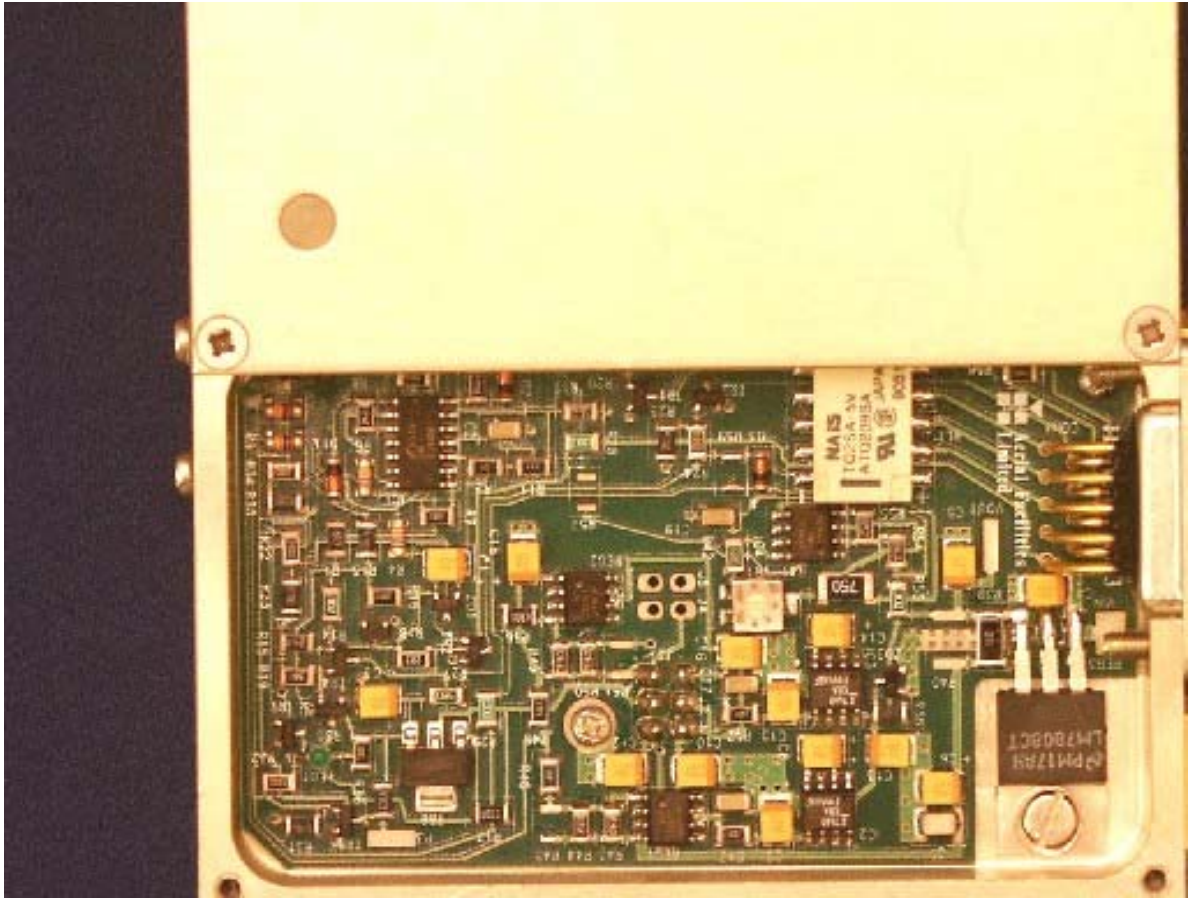
REF. 11-006101
FREQ. 380 - 500 MHz
PWR. 1W 10-24V
S/N. AMP9976
DATE 22/04/2002 CE 0086

 Aerial Facilities
Limited

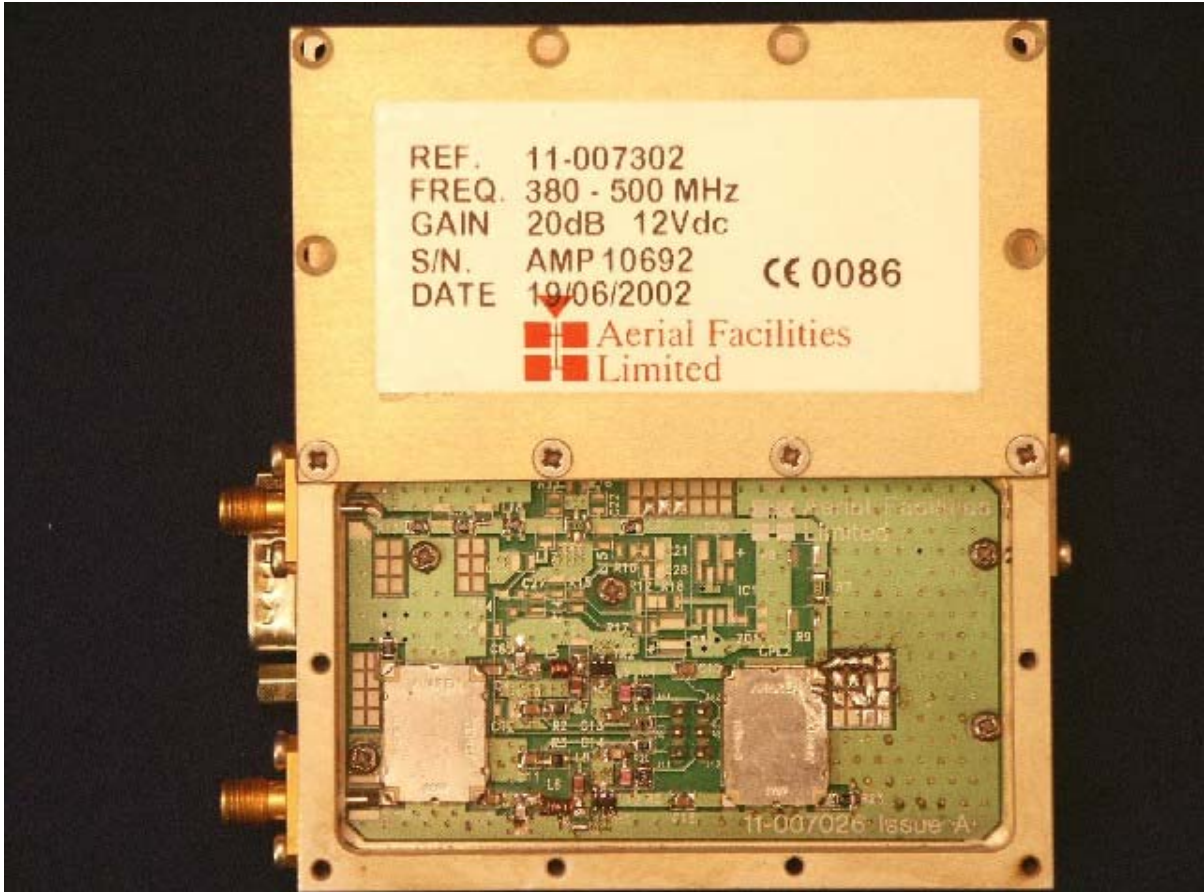
116102 - RF



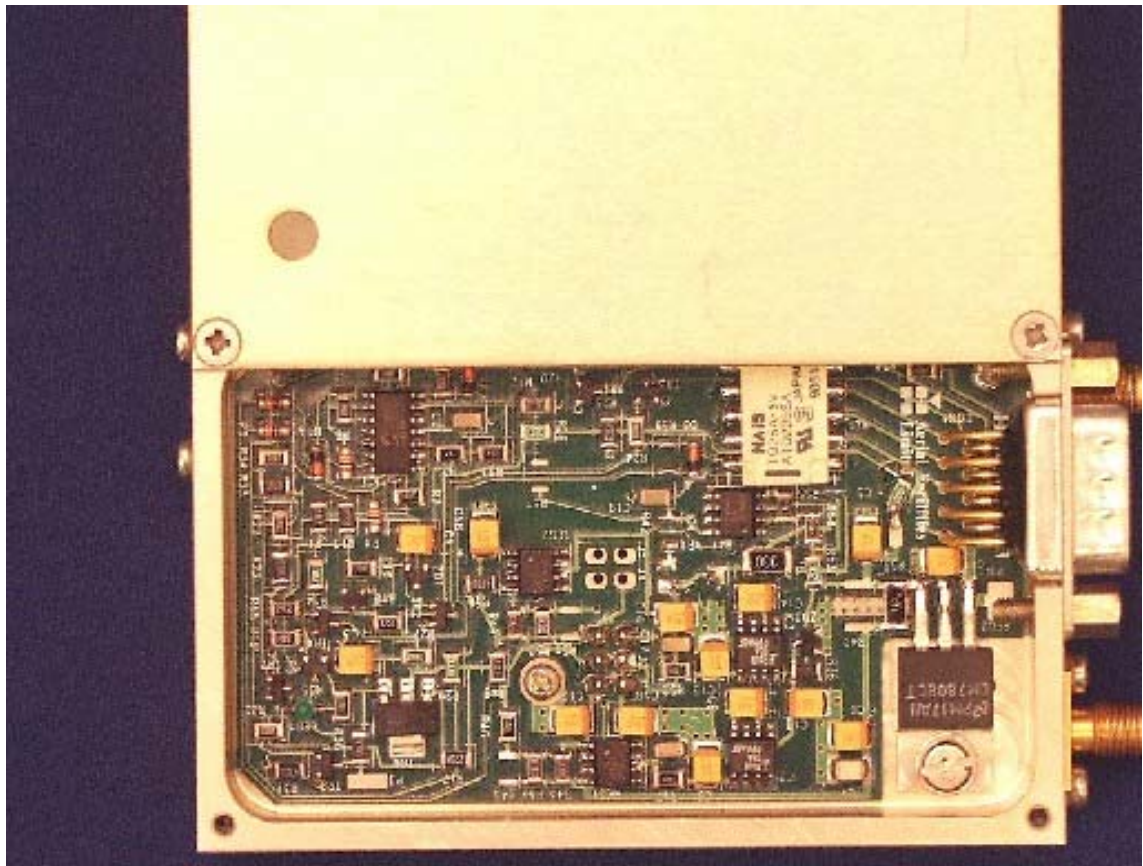
116702 - rf



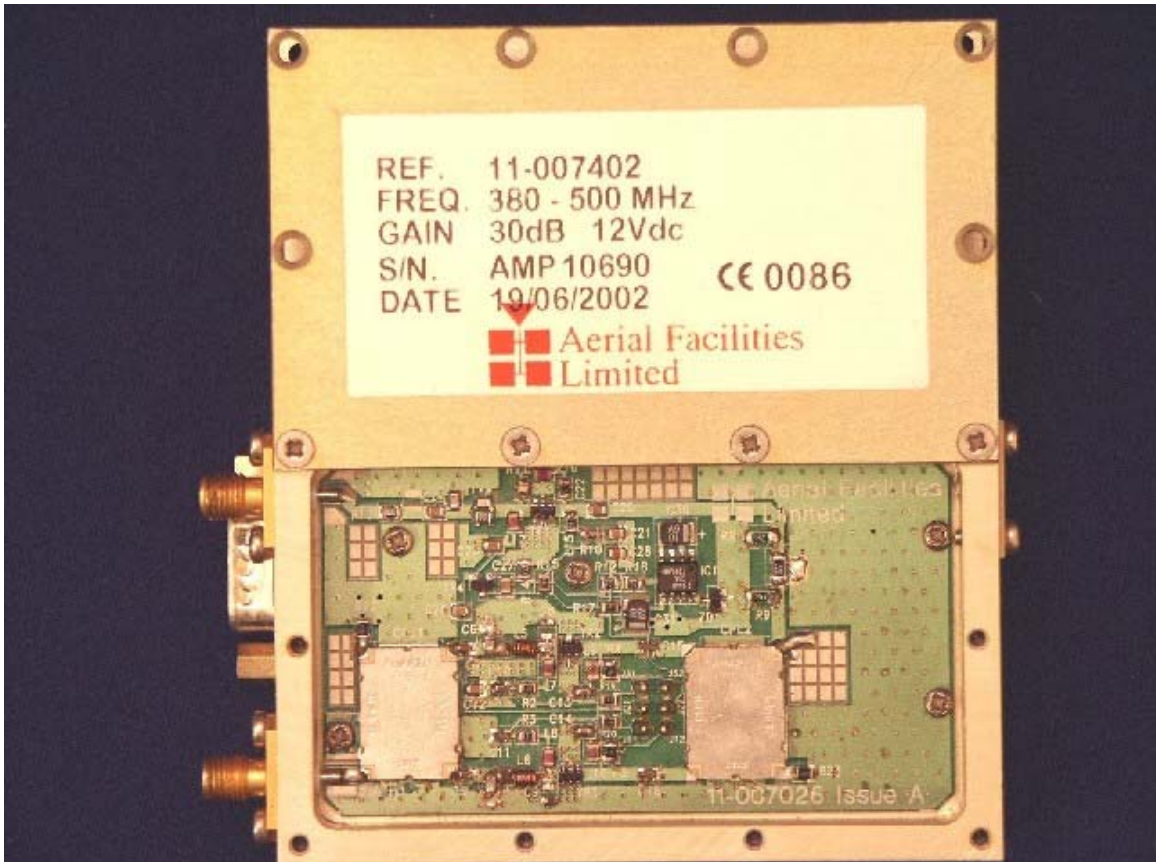
117302 - DC



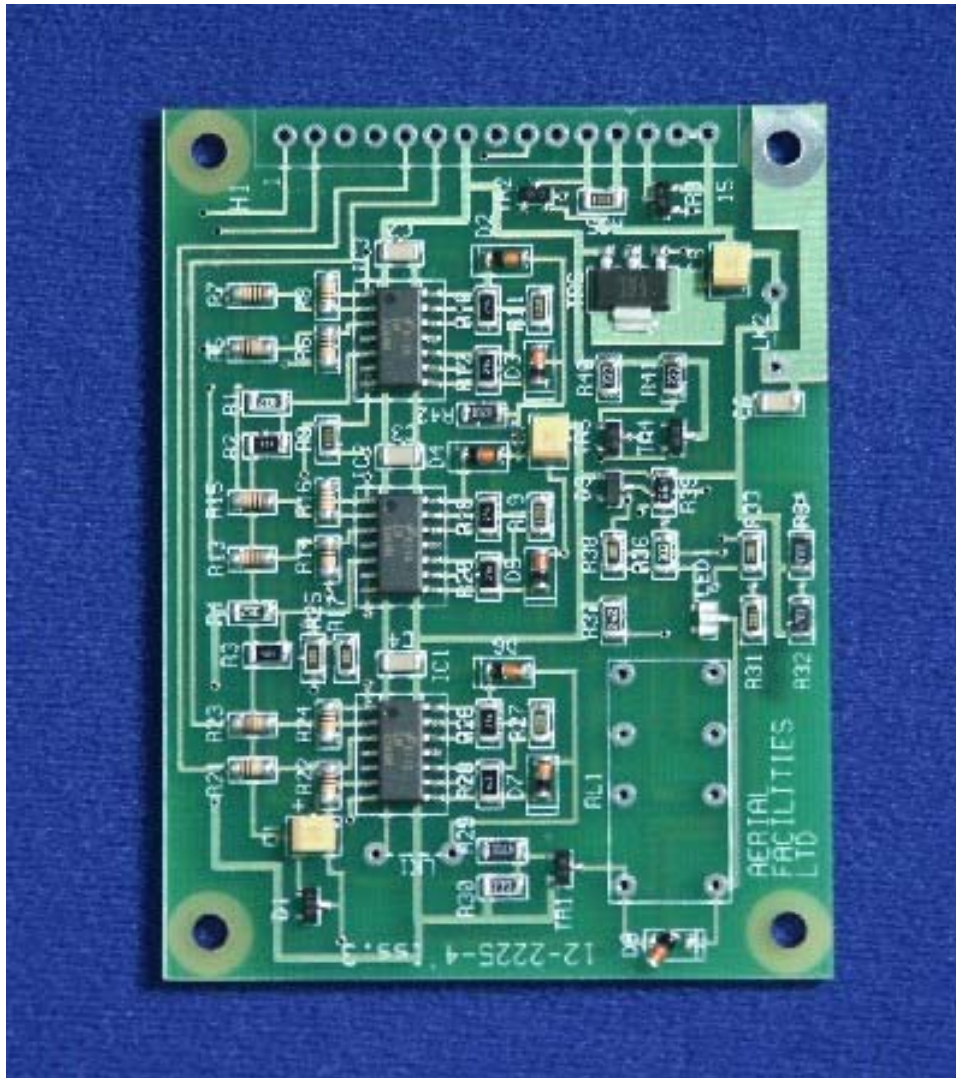
117302 - rf



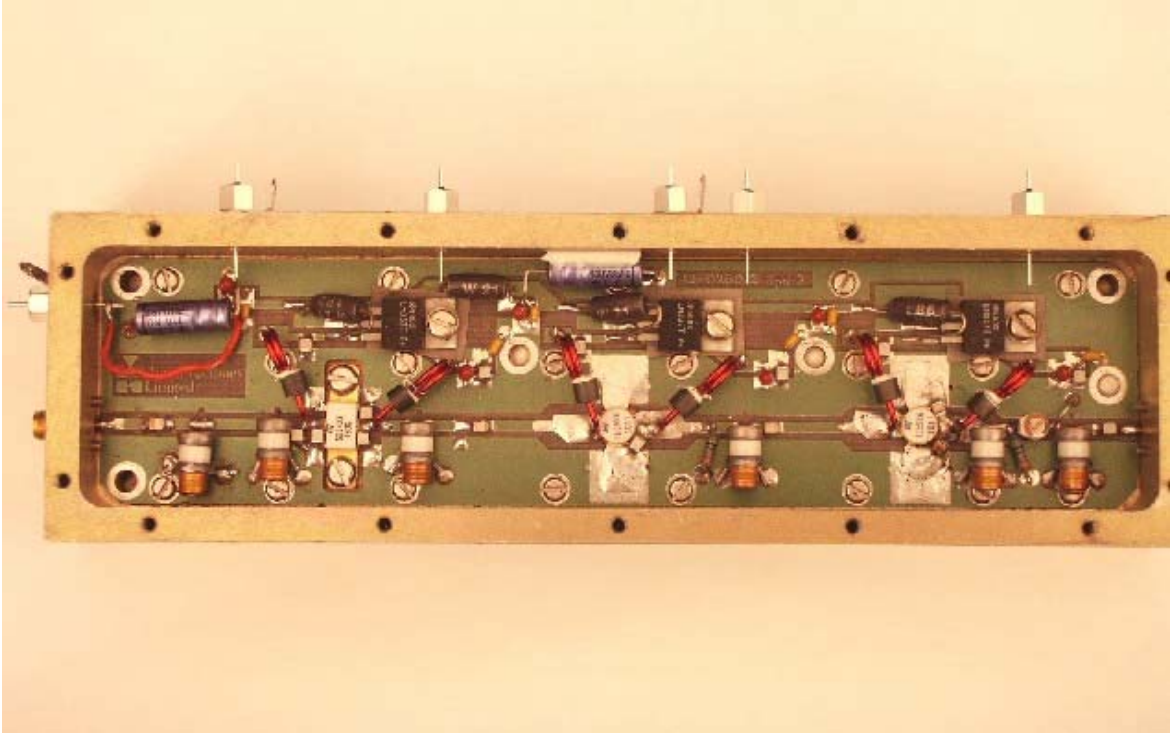
117402 - DC



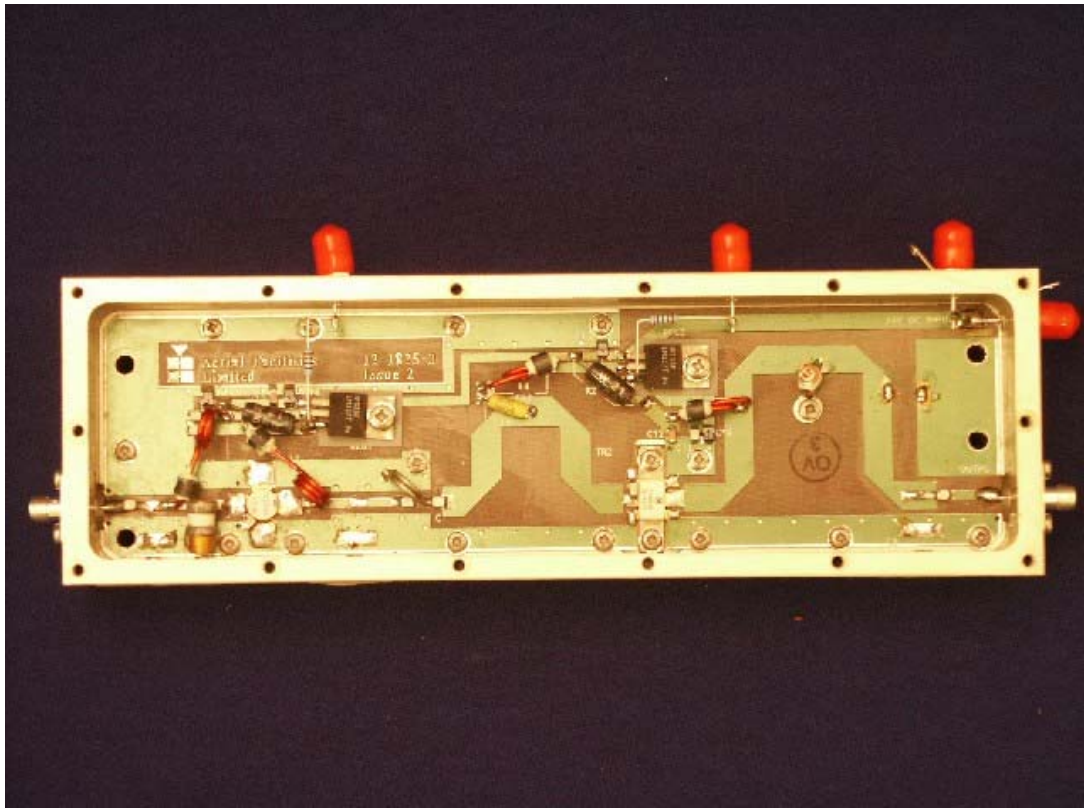
117402 - rf



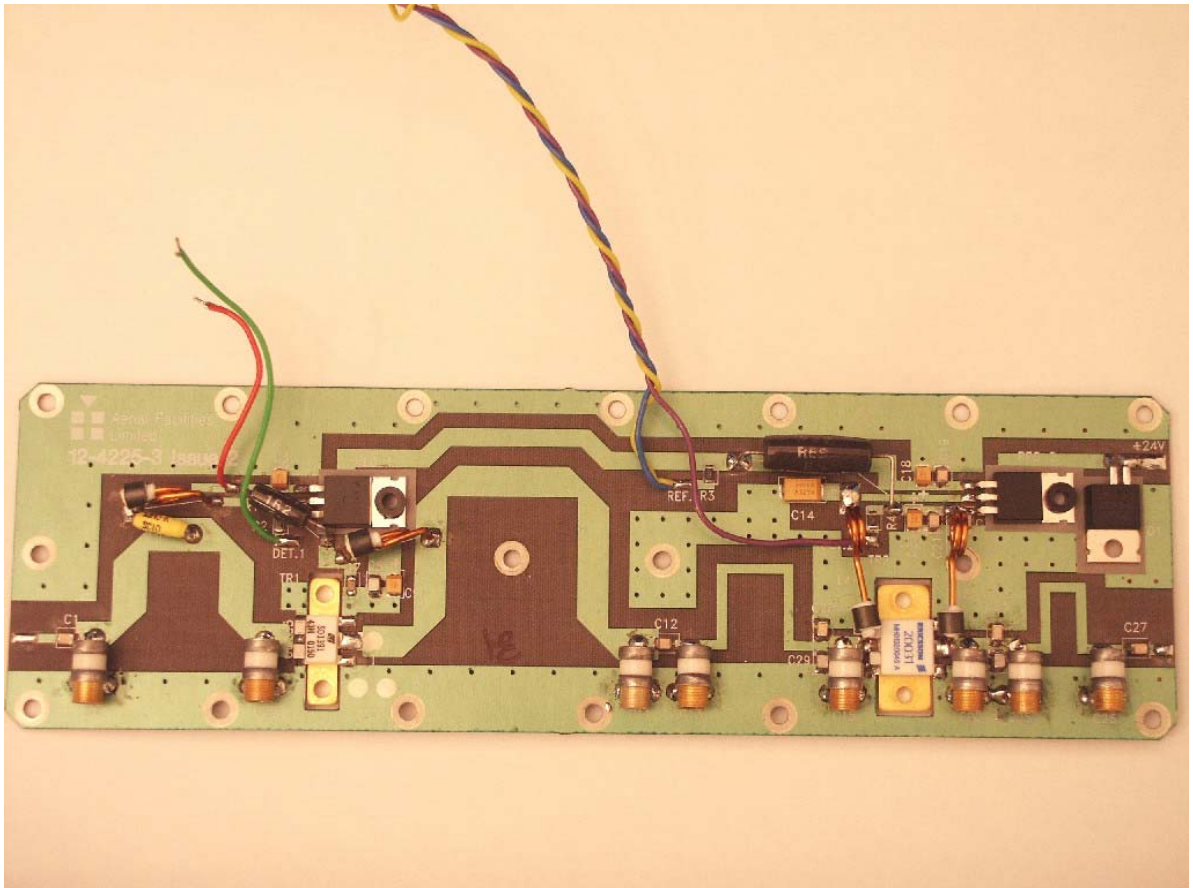
12002201



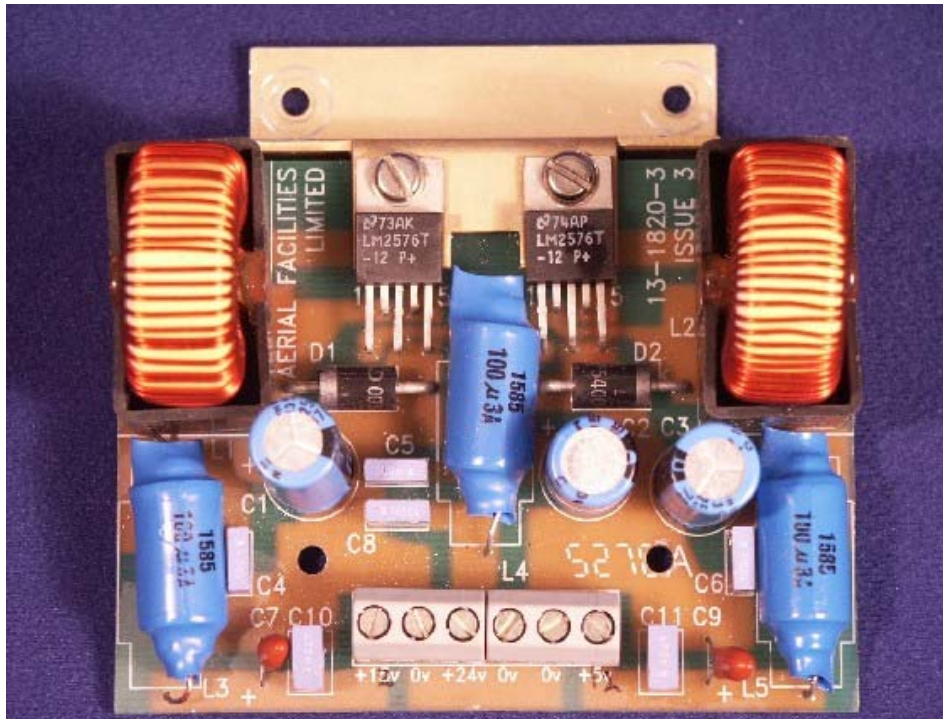
120026 - rf



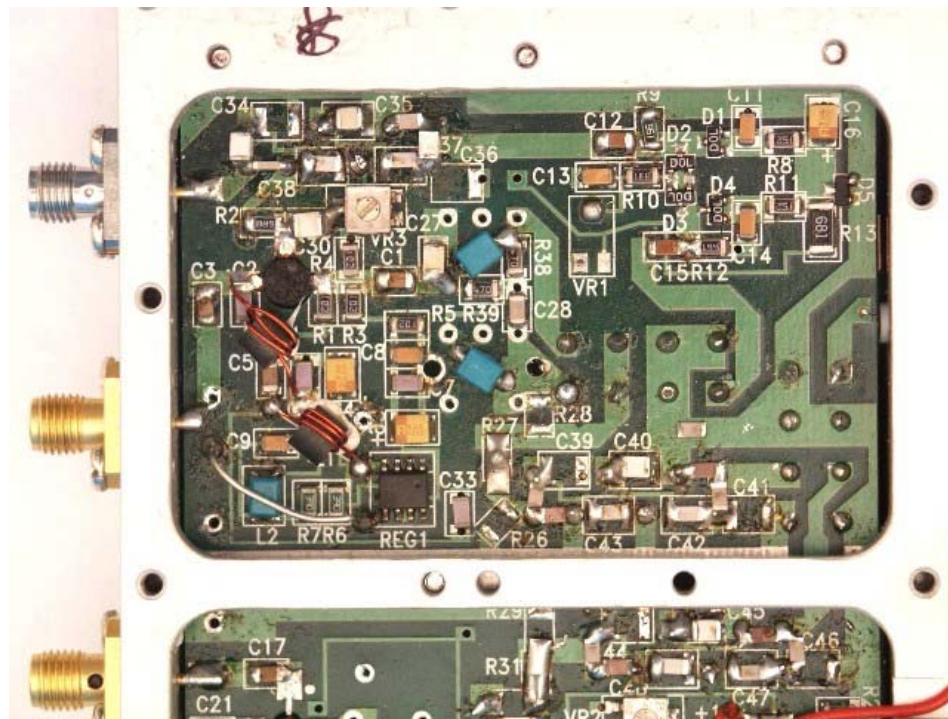
12-1825rf



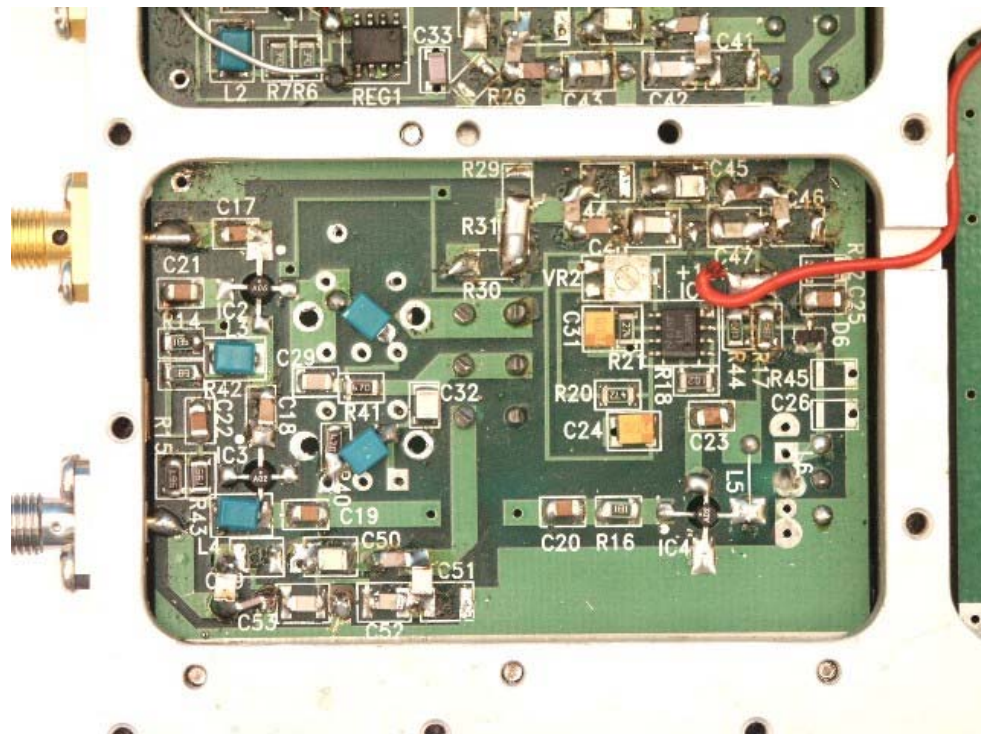
12-4225rf



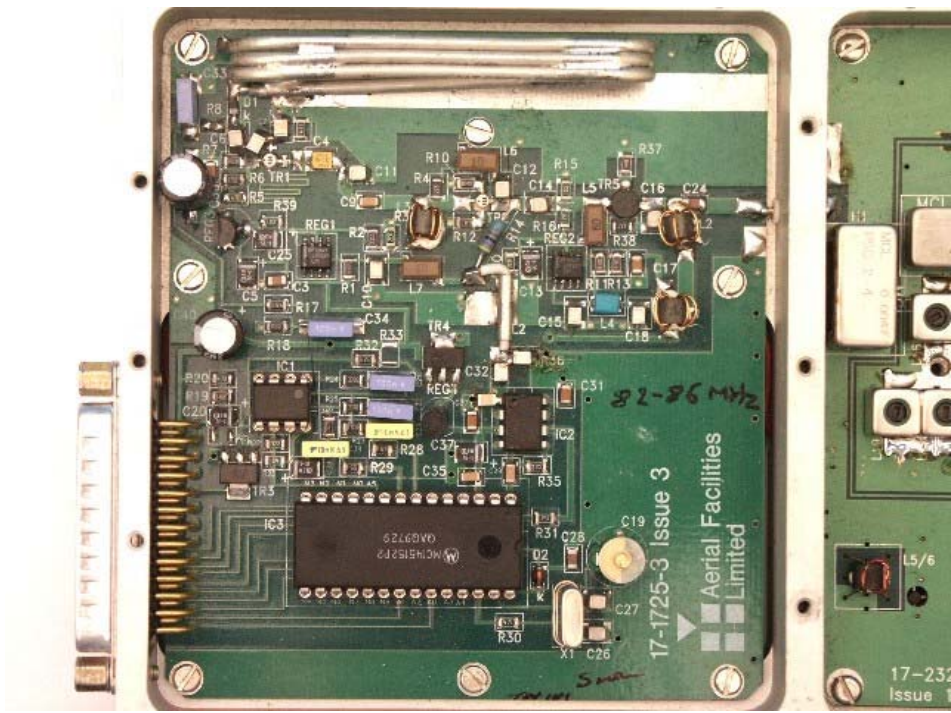
DC-DC-13803



Chan. Mod. Input



Chan. Mod. Output



Chan. Mod. Synth Side