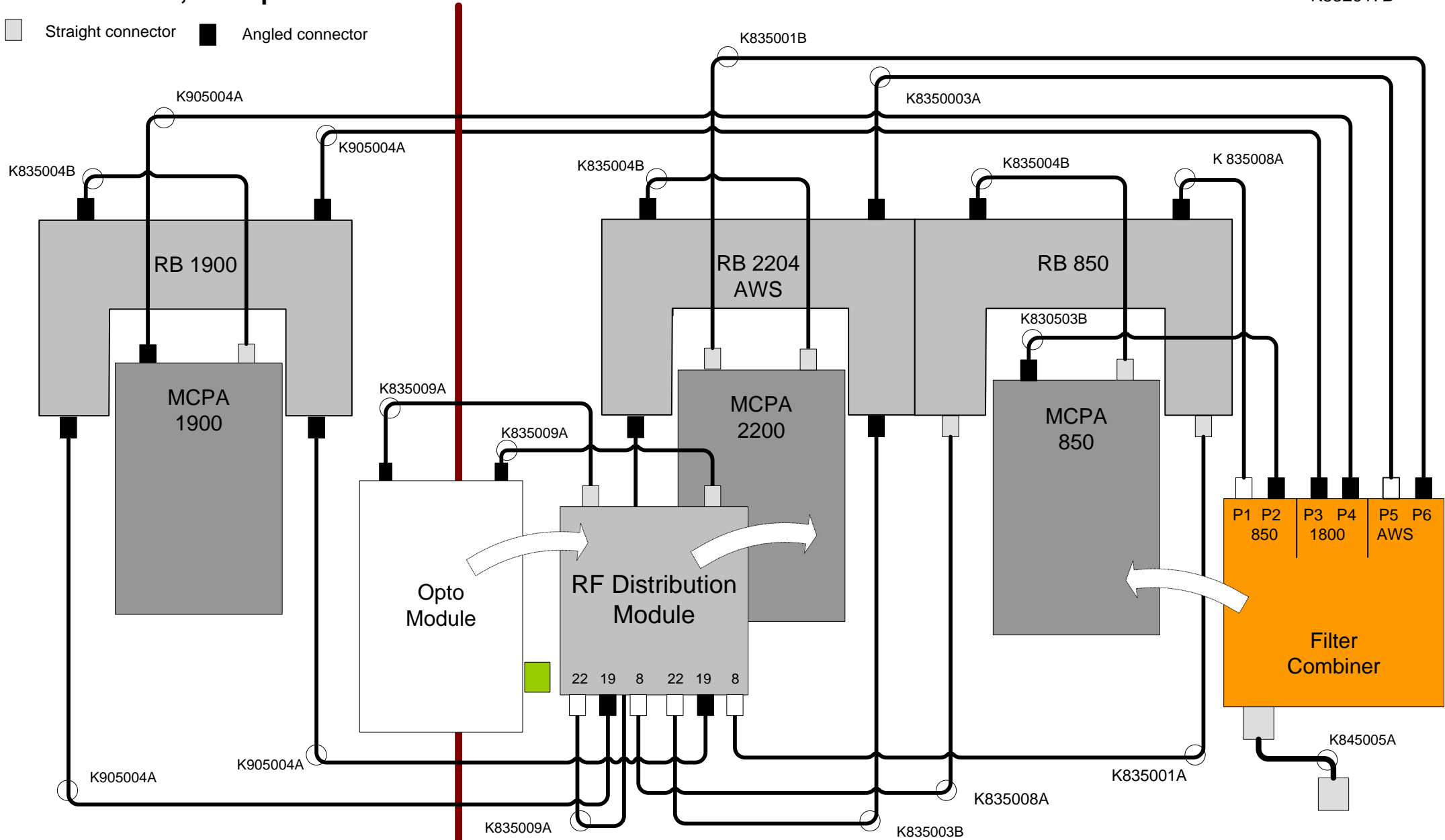


MBF-T-8-17-19, one opto

K832017B

Straight connector
 Angled connector



K835001A	2	K835009A	3
K835003B	3	K905004A	4
K835004B	3		
K835008A	2		

	Title RF Cabling MBF-T-8-17-19, one opto	
	Articleno. K831012B	Date 2009-02-12
	Drawn by Annika Soderholm	Sheet no 1
	Copyright Axell Wireless 2009	

A

B

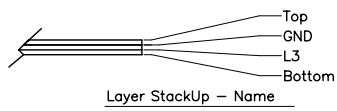
C

D

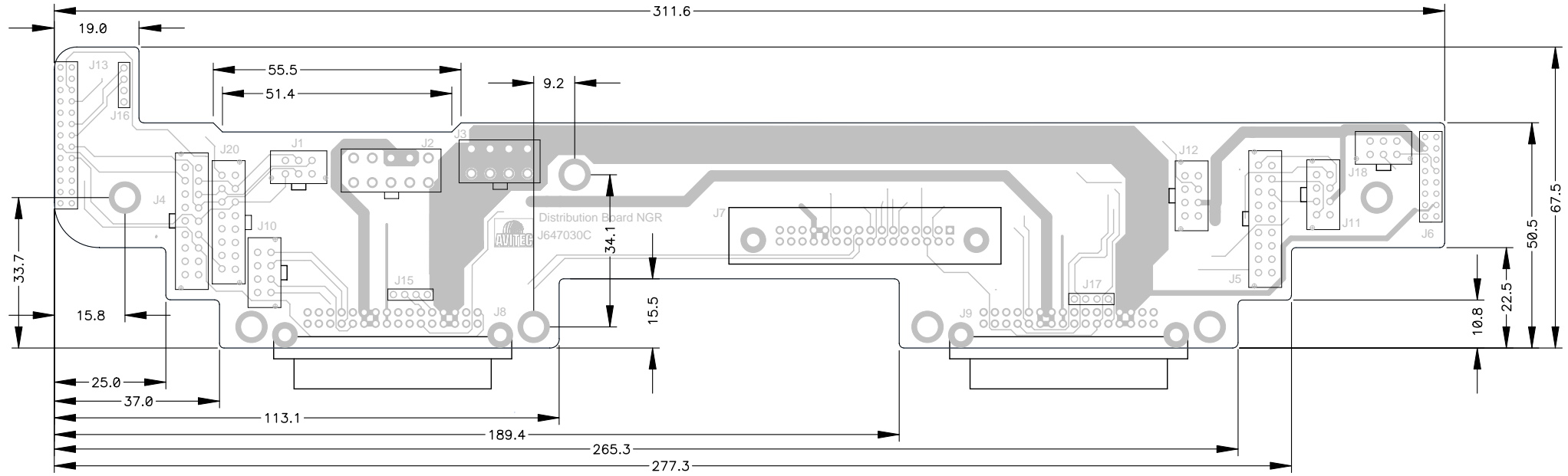
Benämning Title		Distribution Board, NGR	
ArtikeInr. ArticleNr.	J647030C	Datum Date	2007-01-02
Material:	FR4	Tjocklek: Thickness:	2,4mm
Faktaansvarig Design approved	MFH	Dok.ansv./Godkänd Doc.respon/Approved	CT
Uppgjord Drawn by			



Drill Table			
Hole Dia (mm)	Symbol	Quantity	Plated
0.711	+	123	Yes
0.762	X	42	Yes
0.991	+	120	Yes
0.991	Y	6	No
1.000	M	16	Yes
1.000	X	2	No
1.016	◇	60	Yes
1.016	◇	8	No
1.397	M	18	Yes
2.692	◇	6	Yes
4.496	◇	7	Yes



Tin-lead plating on top and bottom layer
Solder mask on top and bottom layer



A

B

C

D

SGC Technologies, Inc.

Wireless and Internet Communication

DRAWN BY : LEE KWAN SEOP

APPROVAL BY : KIM BO HOON

ISSUED DATE : 2010.07.29.

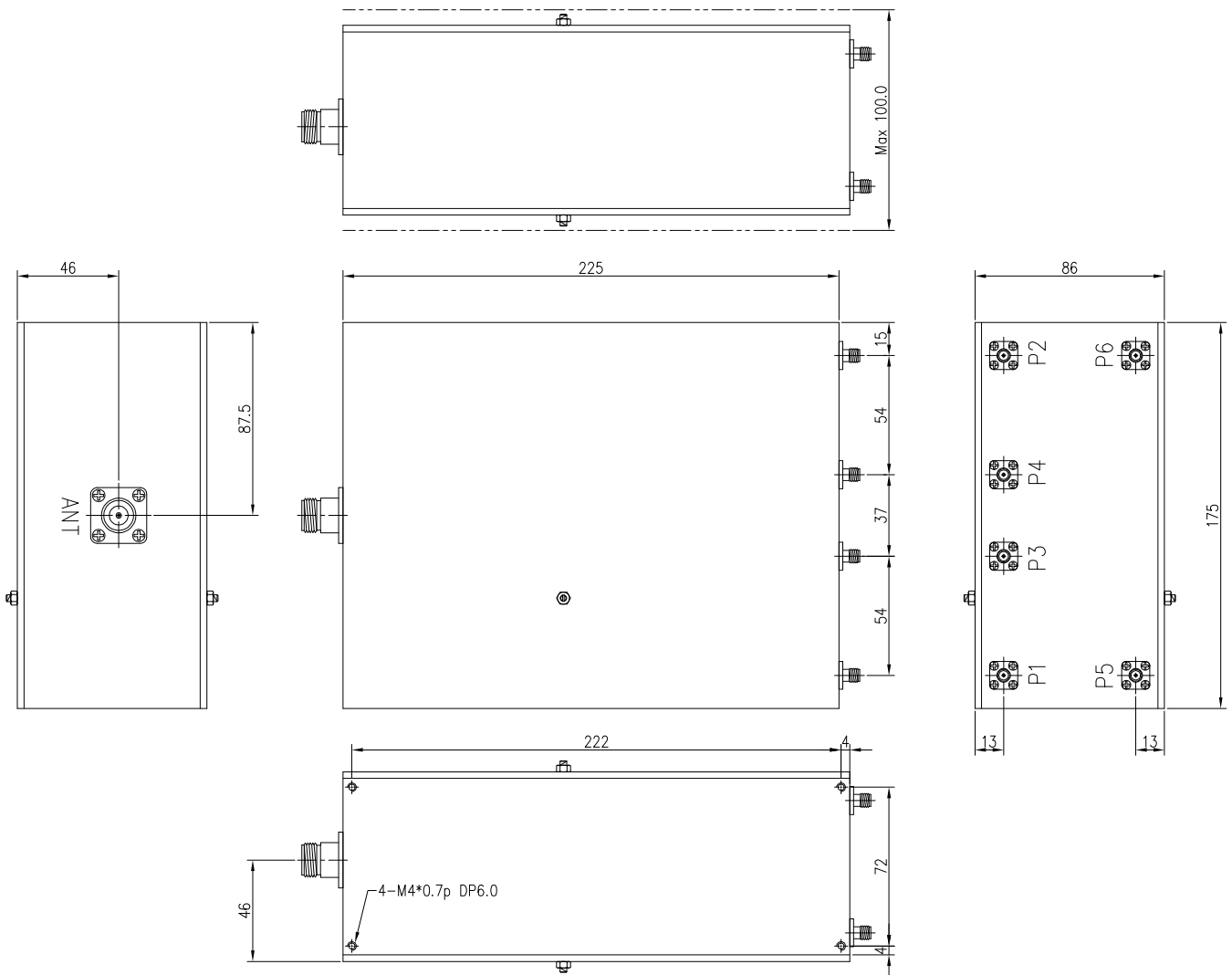
PRODUCT SPECIFICATION FOR INFORMATION

CUSTOMER: AXELL WIRELESS

PRODUCT NAME: Cavity Sixplexer (6 Ports 7 Pass Bands)

PART NO : SGC-M6707/881/1960-60NS-KTA

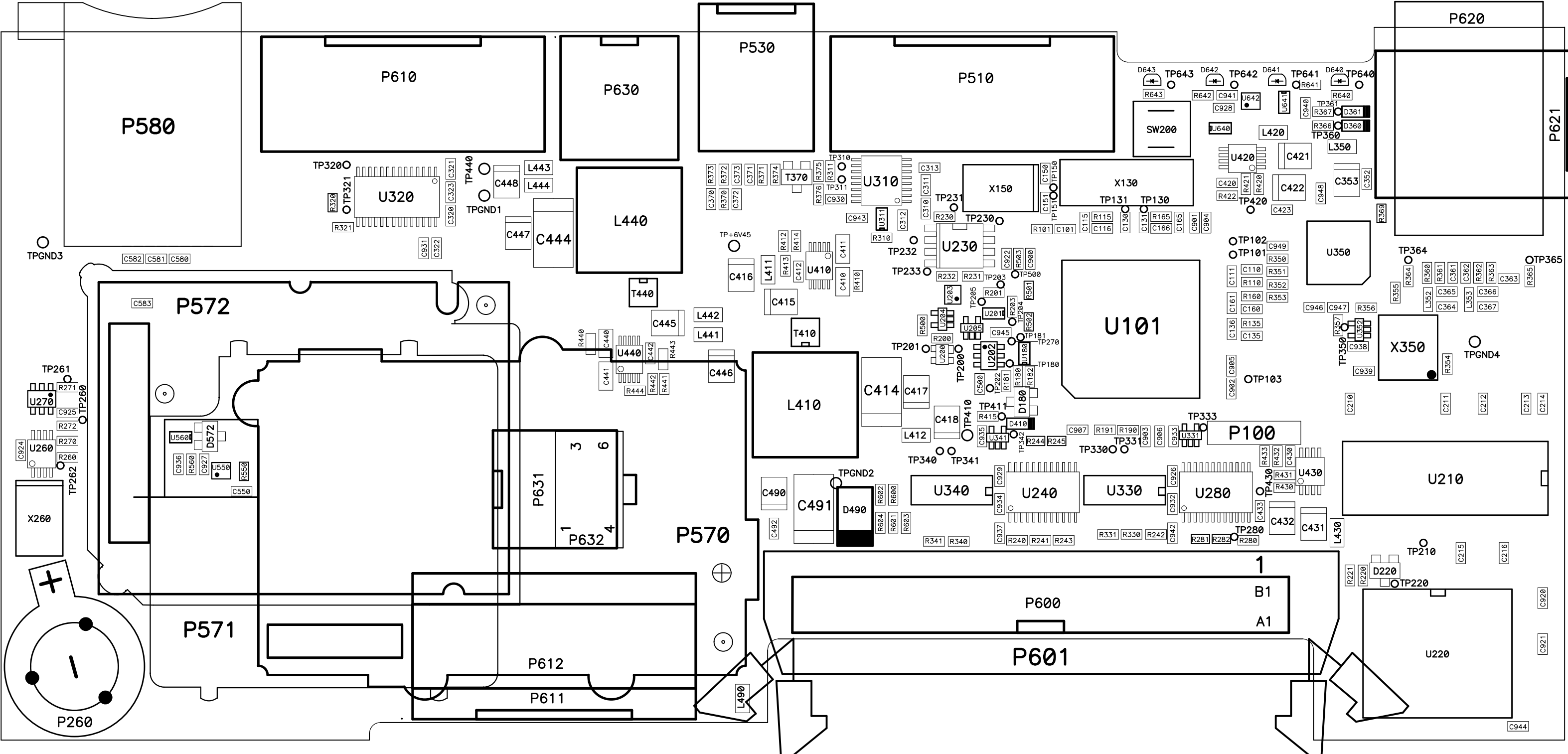
DIMENSION : 175 x 225 x 86 (W x L x H) unit: mm

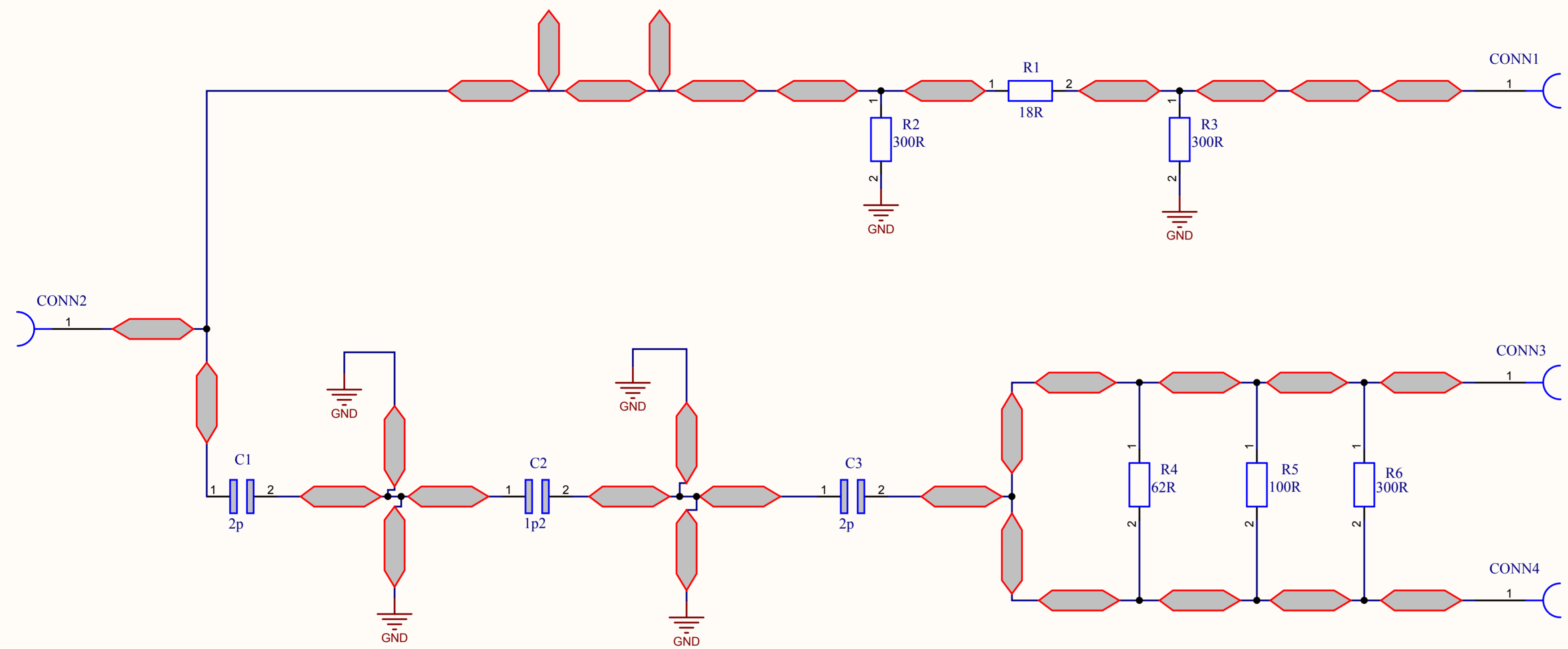


Specification: SGC-M6707/881/1960-60NS-KTA

ITEM	700		850		1900	
	P1	P2	P3	P4	P5	P6
F.C	742.5 MHz	707&781.5MHz	836.5MHz	881.5MHz	1880 MHz	1960 MHz
B.W	29 MHz	18 & 11 MHz	25MHz	25MHz	60 MHz	60 MHz
	(728 ~ 757)	(698~716) (776~787)	(824-849)	(869-894)	(1850 ~ 1910)	(1930 ~ 1990)
I.L	1.5 dB max		1.5 dB max		1.5 dB max	
Ripple	1.0 dB max		1.0 dB max		1.0 dB max	
Group Delay	150 ns max		150 ns max		150 ns max	
Return Loss	18dB min.					
Attenuation	60 min @ 0 – 698 MHz	60 min @ 0 – 650 MHz	60 min @ 0 – 716MHz	60 min @ 0 – 698MHz	80 min @ 0 – 1700 MHz	80 min @ 0 – 1850 MHz
	80 min @ 698 – 716 MHz	80 min @ 728 – 757 MHz	80 min @ 728 – 757MHz	80min @ 698-787MHz	20 min @ 1700 – 1830 MHz	95 min @ 1850 – 1910 MHz
	7 min @ 716 - 723 MHz	10 min @ 793 – 824 MHz	50min @ 776-787MHz	89 min @ 824 – 849 MHz	89 min @ 1930 – 1990 MHz	7 min @ 1910 – 1925MHz
	7 min @ 761 - 763 MHz	50min @ 824 - 859 MHz	89 min @ 869 – 894 MHz	7 min @ 849 – 864 MHz	60 min @ 1990 – 3000MHz	7 min @ 1995 – 2010 MHz
	20 min @ 763-776MHz	80 min @ 869 – 894 MHz	70 min @ 894 – 2700 MHz	7 min @ 899 – 914 MHz		40 min @ 2010 – 6000 MHz
	80 min @ 776 – 859 MHz	70 min @ 894– 2700MHz		30 min @ 914 – 950 MHz		
	70 min @ 869 – 2700 MHz			60 min @ 950– 1850 MHz		
				90 min @ 1850 – 1910 MHz		
				60 min @ 1910 – 2700 MHz		
Impedance	50 Ohm					
PIMD (min)	- 125 dBm @ 2*36dBm		- 125 dBm @ 2*36dBm		- 125 dBm @ 2*36dBm	
Input Power Load :R.L> 9dB	40 dBm (AVG) 50 dBm (PEAK)	20 dBm (AVG) 30 dBm(PEAK)	20 dBm(AVG) 30 dBm (PEAK)	40 dB (AVG) 50 dBm (PEAK)	20 dBm(AVG) 30 dBm(PEAK)	40 dBm(AVG) 50 dBm (PEAK)
Temp Range	-20 ~ +65 (Operating), -40 ~ +70 (Storage)					
Humidity	Relative Humidity 5 – 95 % , Absolute Humidity < 25g/m ³					
Air pressure	70 – 106 kpa					
Vibration And Shock	Sinusoidal vibration Displacement 0.3mm , Acceleration 1m/s ² Frequency 2 – 200 Hz Shock Type L , Acceleration 40m/s ²					
Color	Ivory					
Connector	ANT : N-Type(Female), Others : SMA (Female)					

AVITEC AB H417030D Controller 070621 Assembly Drawing





1A	PRODUCTION ISSUE(AWECR214)	10.12.08	DJL
AA	PROTOTYPE ISSUE	30.04.08	MI
No	DESCRIPTION	DATE	BY
ISSUE			

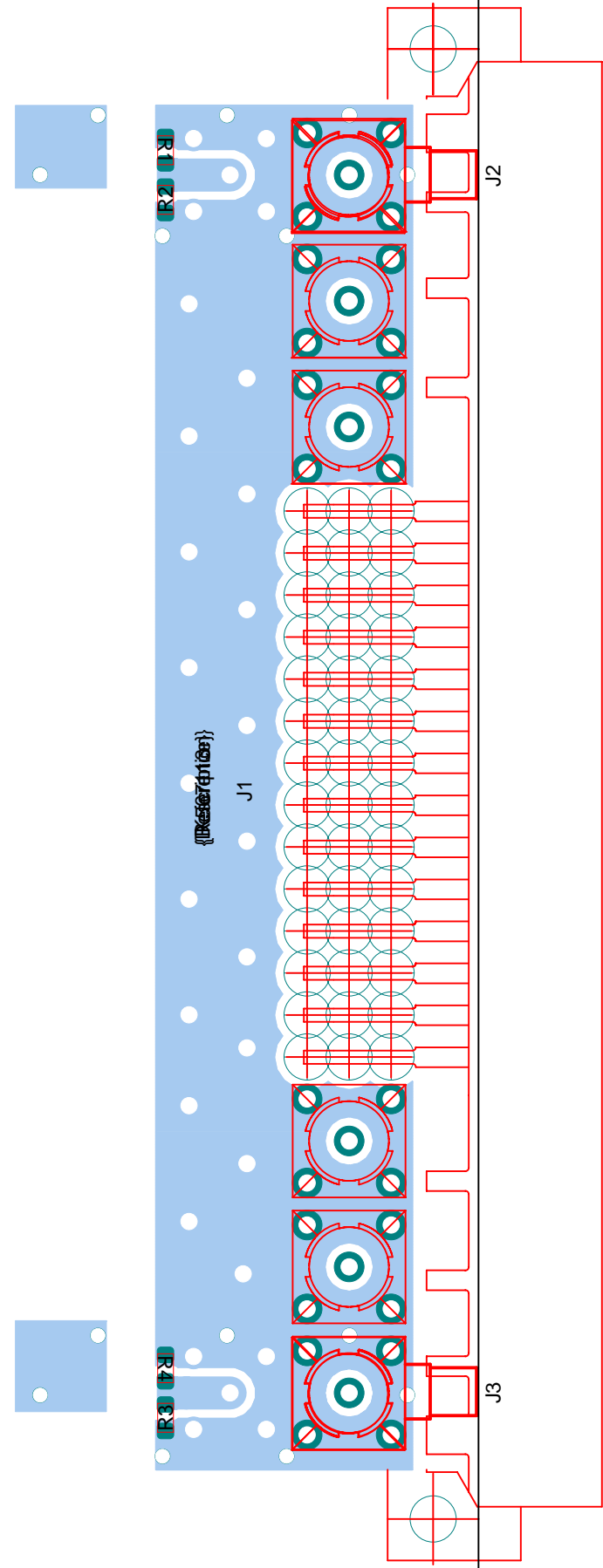
DRAWN MI	DATE 30.04.08	THIS IS A PROPRIETY DESIGN OF AXELL WIRELESS LTD REPRODUCTION OR USE OF THIS DESIGN BY OTHERS IS PERMISSIBLE ONLY IF EXPRESSLY AUTHORISED IN WRITING BY AXELL WIRELESS LTD
CHKD MI	APPD JD	
ALL DIMENSIONS ARE IN mm UNLESS OTHERWISE STATED		TOLERANCES NO DECIMAL PLACE : \pm 1mm ONE DECIMAL PLACE : \pm 0.3mm TWO DECIMAL PLACES : \pm 0.1mm
		SCALE


 Tel +44 (0)1494 777000
 Fax +44 (0)1494 777002

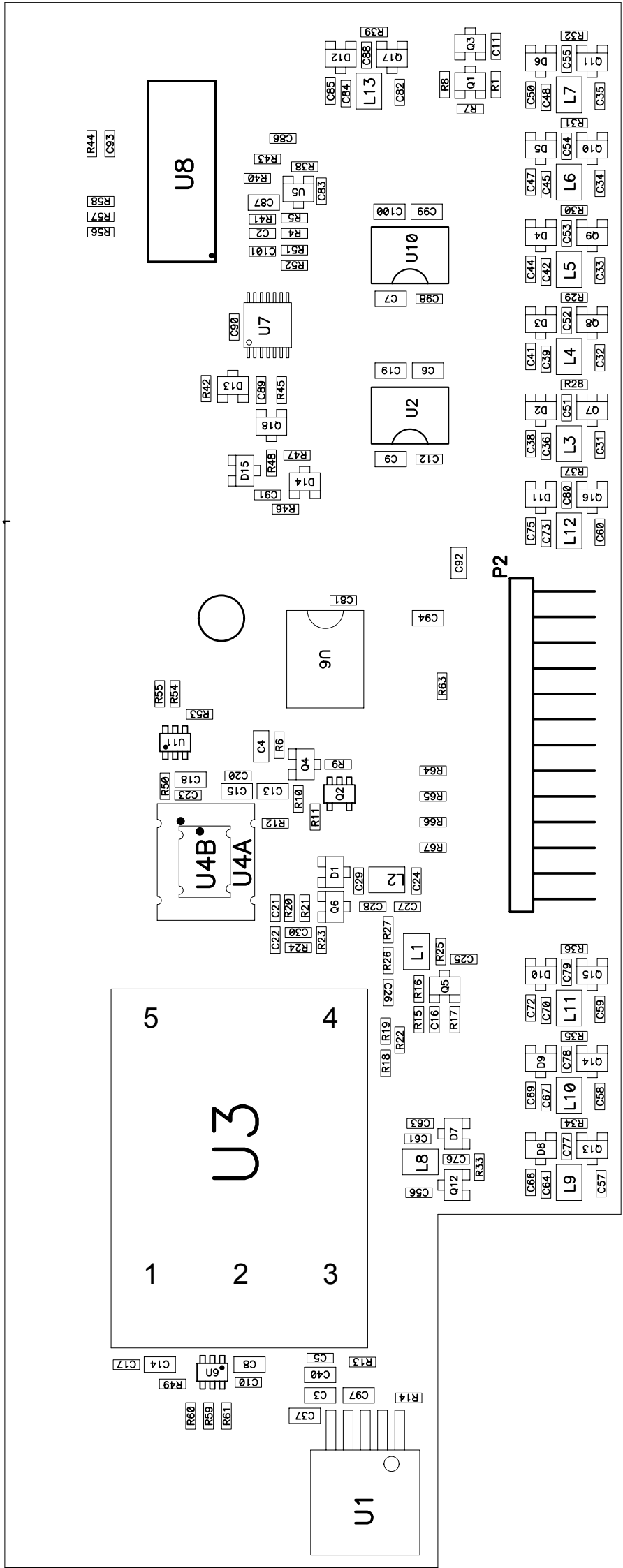
TITLE TREQ,3 WAY,SPLITTER / COMBINER,0.8-2.2 GHz,CIRCUIT DIAGRAM			
CUSTOMER	DRG.No 07-024671	SHEET NUMBER 1	SHEET TOTAL 1

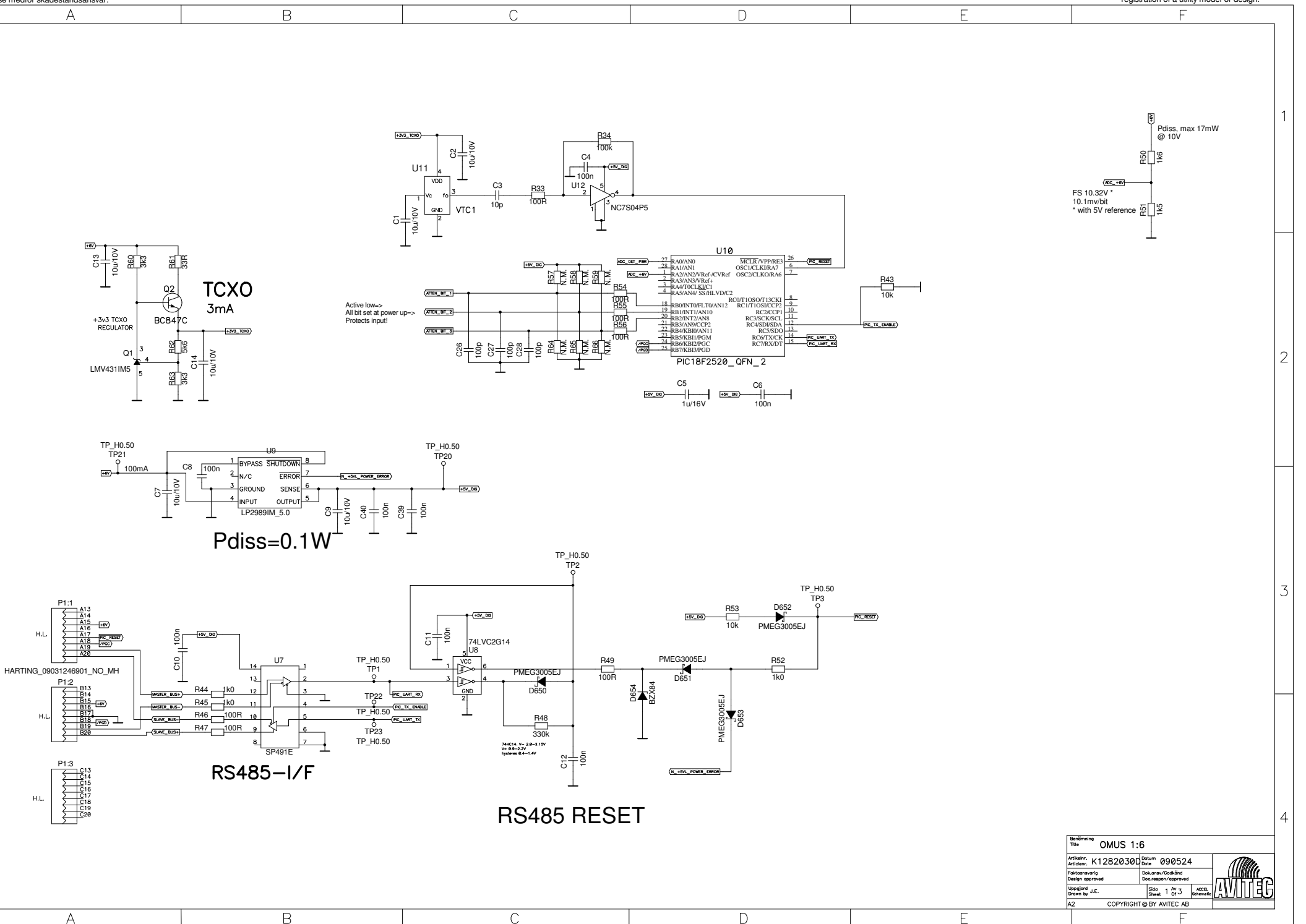


K1317030A



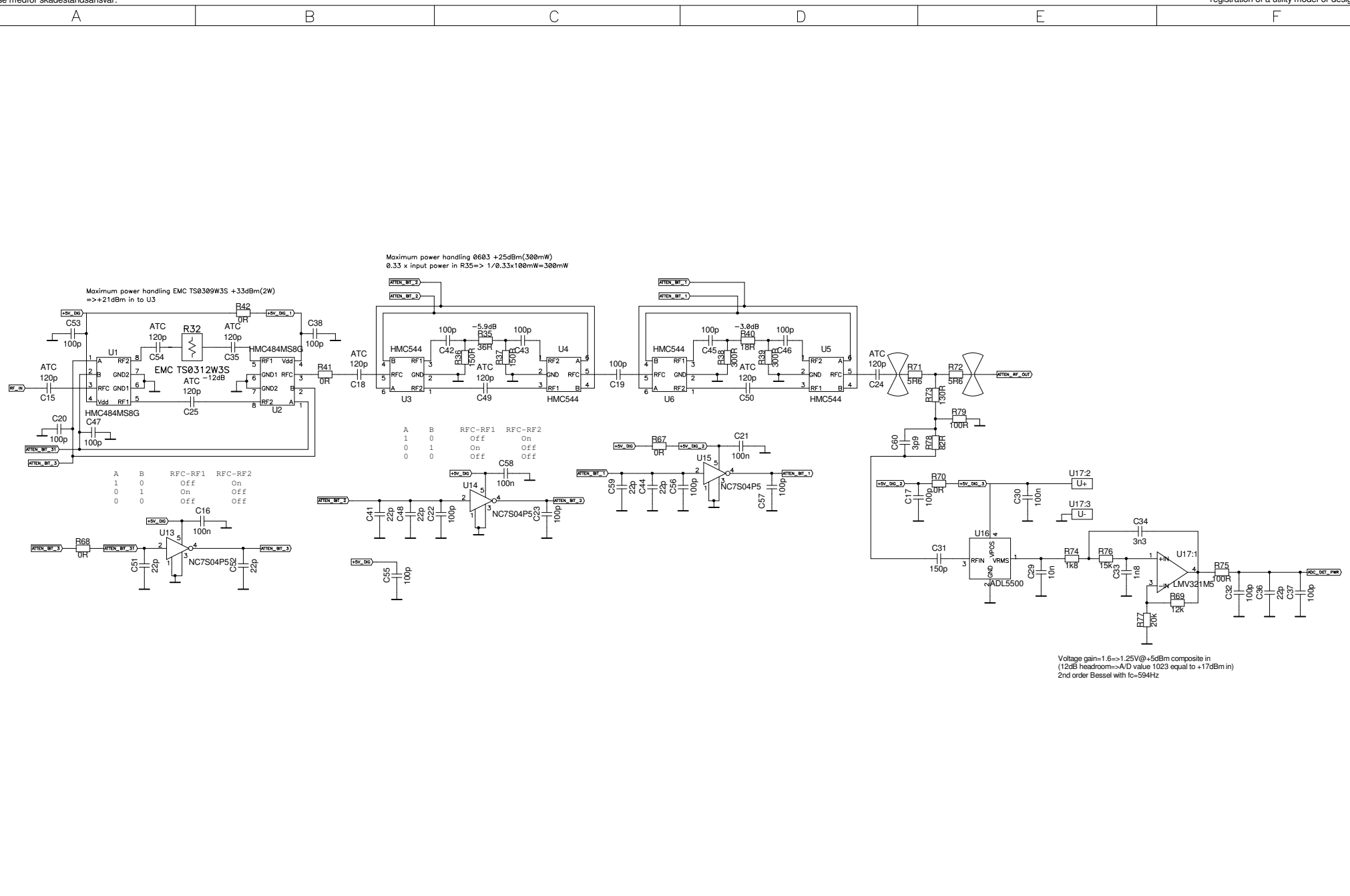
AVITEC AB Reference Generator, NGR R037000A 030720



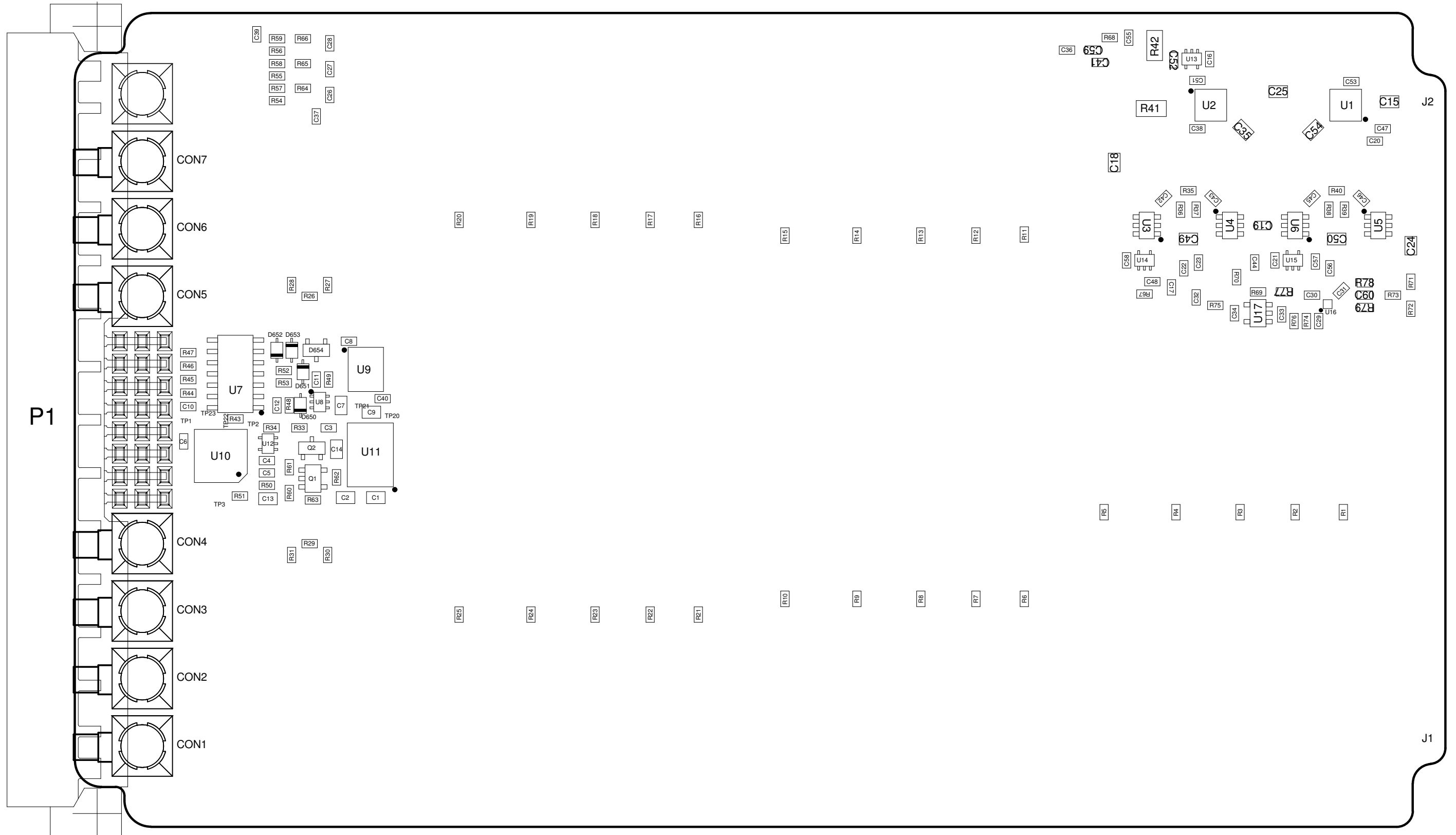


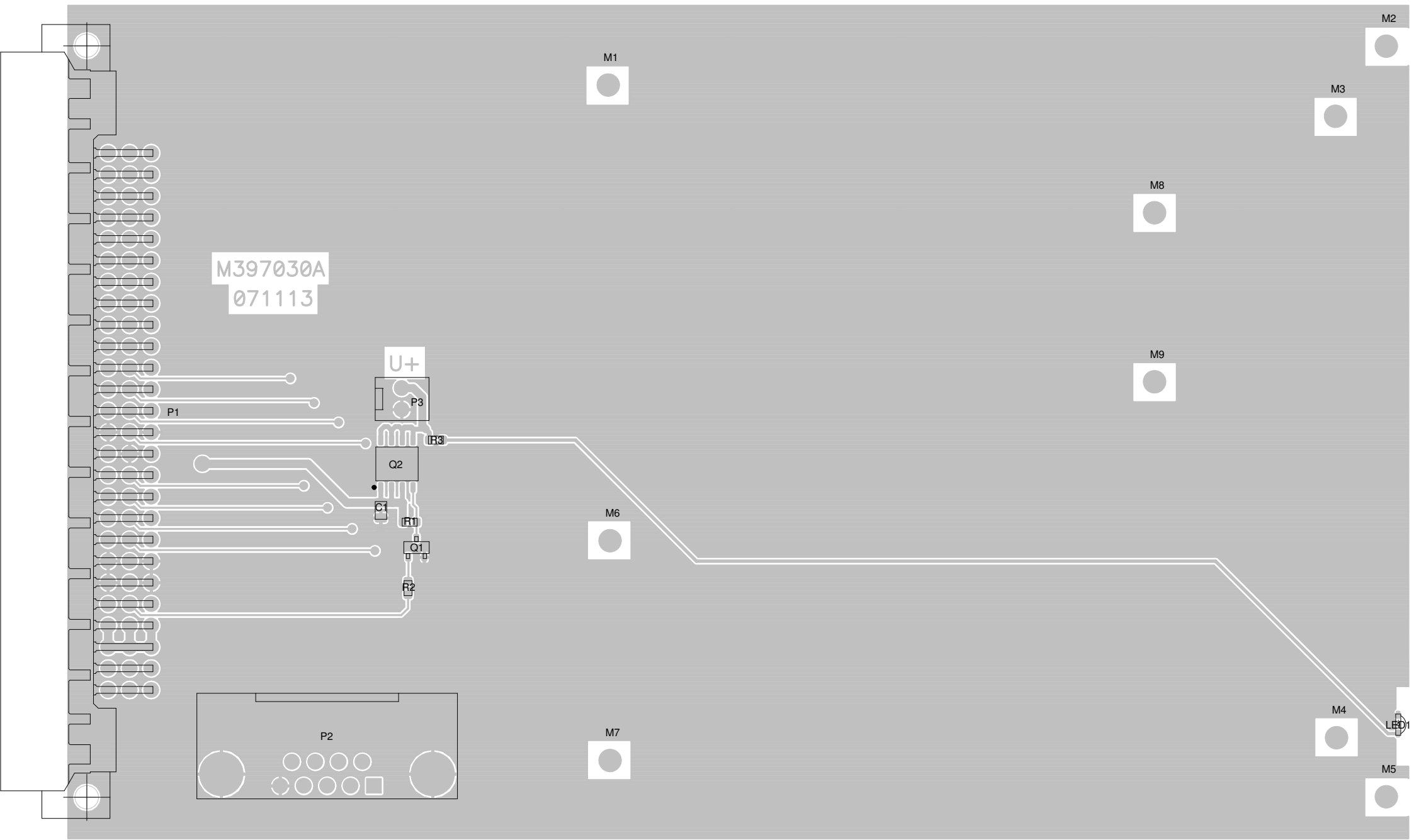
Benämning Titel		OMUS 1:6	
Arbetsnr. K12820300	Datum 090524		
Faktabeskrivning Design approved	Dokumentation Document approved		
Uppgjord Drawn by J.E.	Skala 1:1	Ar 3	ACCEL Schematis
A2 COPYRIGHT © BY AVITEC AB			





AVITEC AB K1287030D OMUS 1:6 090524 Assembly Drawing





M397030A
071113

U+

P1

P3

Q2

C1

R1

Q1

R2

R3

P2

M1

M3

M8

M9

M6

M7

M4

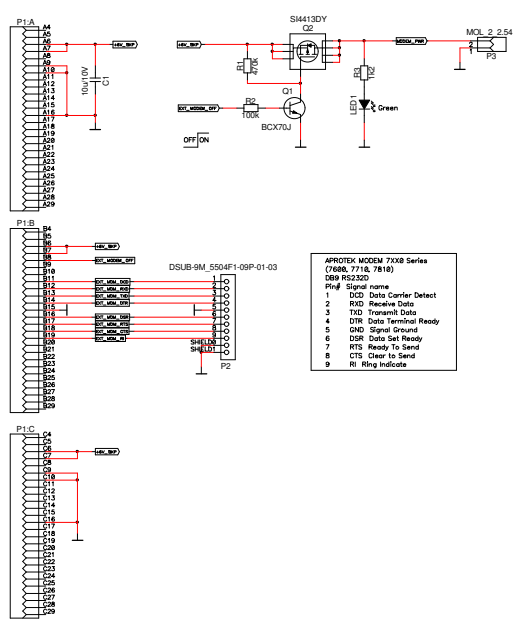
M5


M2

LED1

En vart uttryckliga tillstånd får denna handling icke utlämnas till obehöriga eller kopieras. Ej heller får dess innehåll delgivas obehöriga eller utnyttjas. All upphovsrätt till handlingens innehåll förblir vår liksom all rätt, om patent eller mönsterkydd erhålles. Överträdelse medför skadeståndsansvar.

Copying of this document, and giving it to others and the use or communication of the contents thereof, are forbidden without express authority. Offenders are liable to the payment of damages. All rights are reserved in the event of the grant of a patent or the registration of a utility model or design.

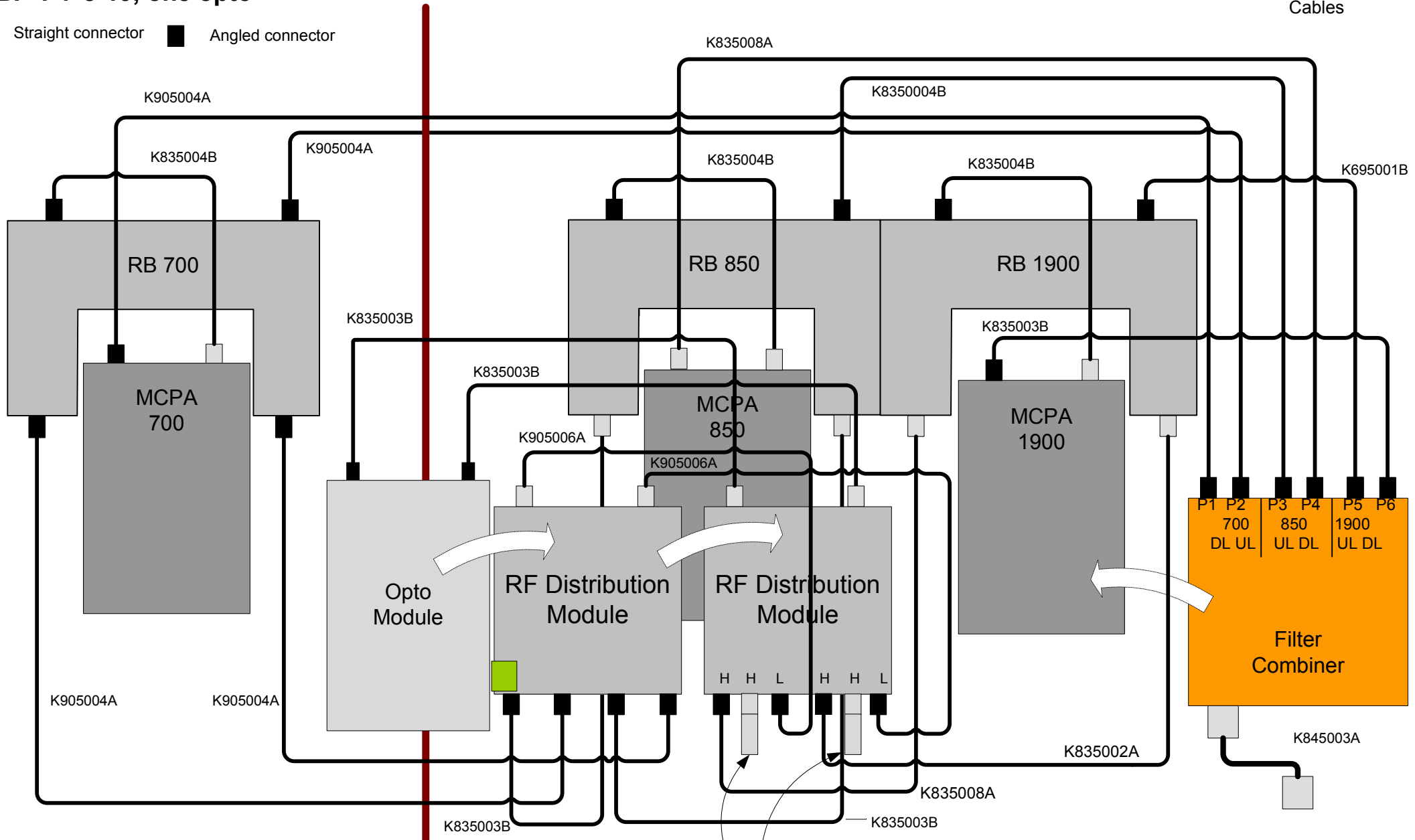


Benämning Title		PSTN Modem Board Aprotek 7810		
Artikelnr. M392030A	Datum Date	2007-11-14		
Faktaansvarig Design approved	Dok.ansev/ Godkänd Doc.respon/approved			
Uppgjord Drawn by	A1			COPYRIGHT © BY AVITEC AB
			Av Of	1 1

MBF-T-7-8-19, one opto

A2170001
Cables

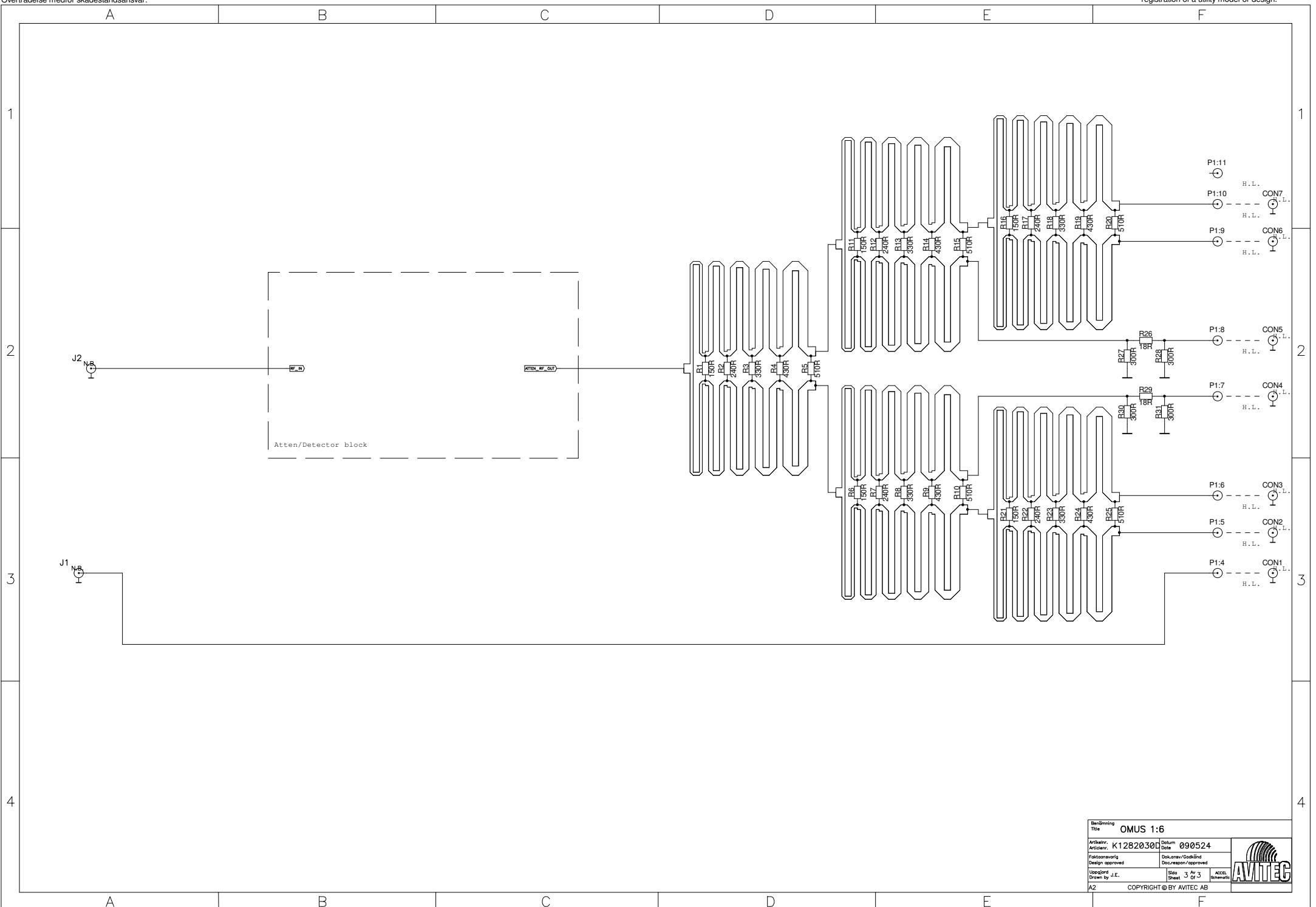
□ Straight connector ■ Angled connector



K695001B	1	K835008A	2
K835002A	1	K845003A	1
K835003B	6	K905004A	4
K835004B	4	K905006A	2

2x 93-930003

	Title RF Cabling MBF-T-7-8-19, one opto	
	Articleno.	K-TBD
	Date	2011-02-24
	Drawn by	Jon Divall
Copyright Axell Wireless 2011		Sheet no 1



Benämning Titel		OMUS 1:6	
Arbetsnr.	K12820300	Datum	090524
Faktsansvarig		Dokument/Granskad	
Design approved		Documentation/approved	
Uppgjord	J.E.	Skala	3 Of 3
Drawn by	J.E.	ACCEL	Schema
A2 COPYRIGHT © BY AVITEC AB			



5

10

15

20

25

30

35

A

B

C

D

E

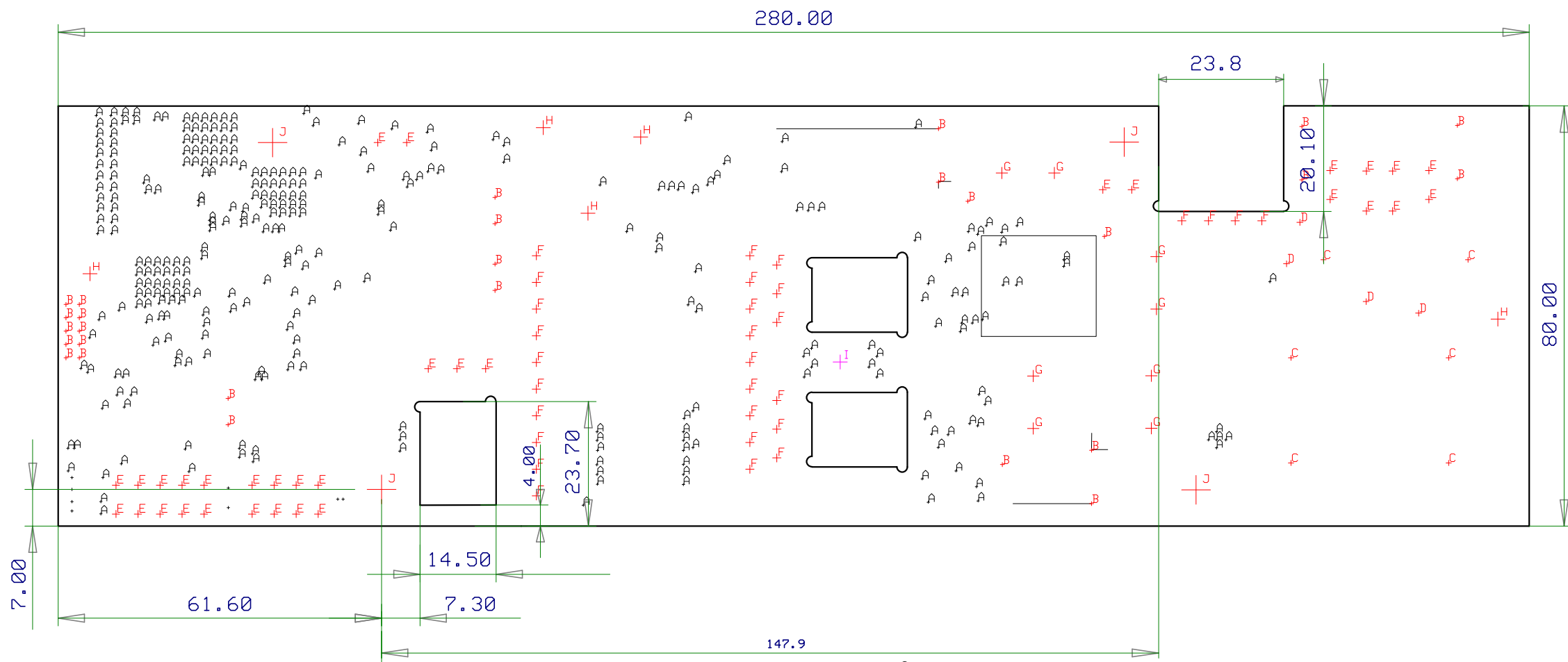
A

B

C

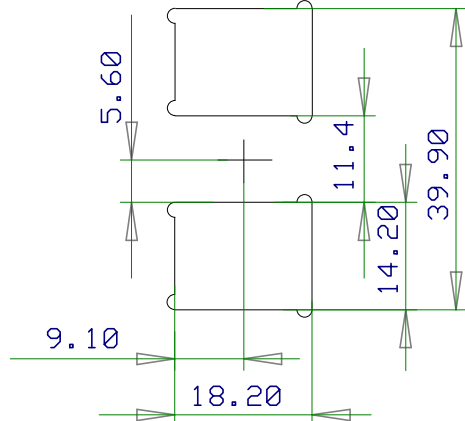
D

E



Code	Diameter	Qty	Type
Unmarked	0.50	8	Hole Type 1
A	0.50	307	Hole Type 2
B	0.80	27	Hole Plated
C	1.00	6	Hole Plated
D	1.17	4	Hole Plated
E	1.40	33	Hole Plated
F	1.60	29	Hole Plated
G	2.20	8	Hole Plated
H	2.70	5	Hole Plated
I	2.70	1	Hole Unplated
J	5.50	4	Hole Plated

VIA
VIA BLIND



⑨	Design	Description	POWER UNIT	Included in	Machine
⑧	Drawn			Release ECO	Release date
⑦	Checked			Replaces	Design rev. 040317
⑥		4REAL AB		Drawing no.	Page
⑤				J797030X	1/1
④					
③					
②					
①					

5

10

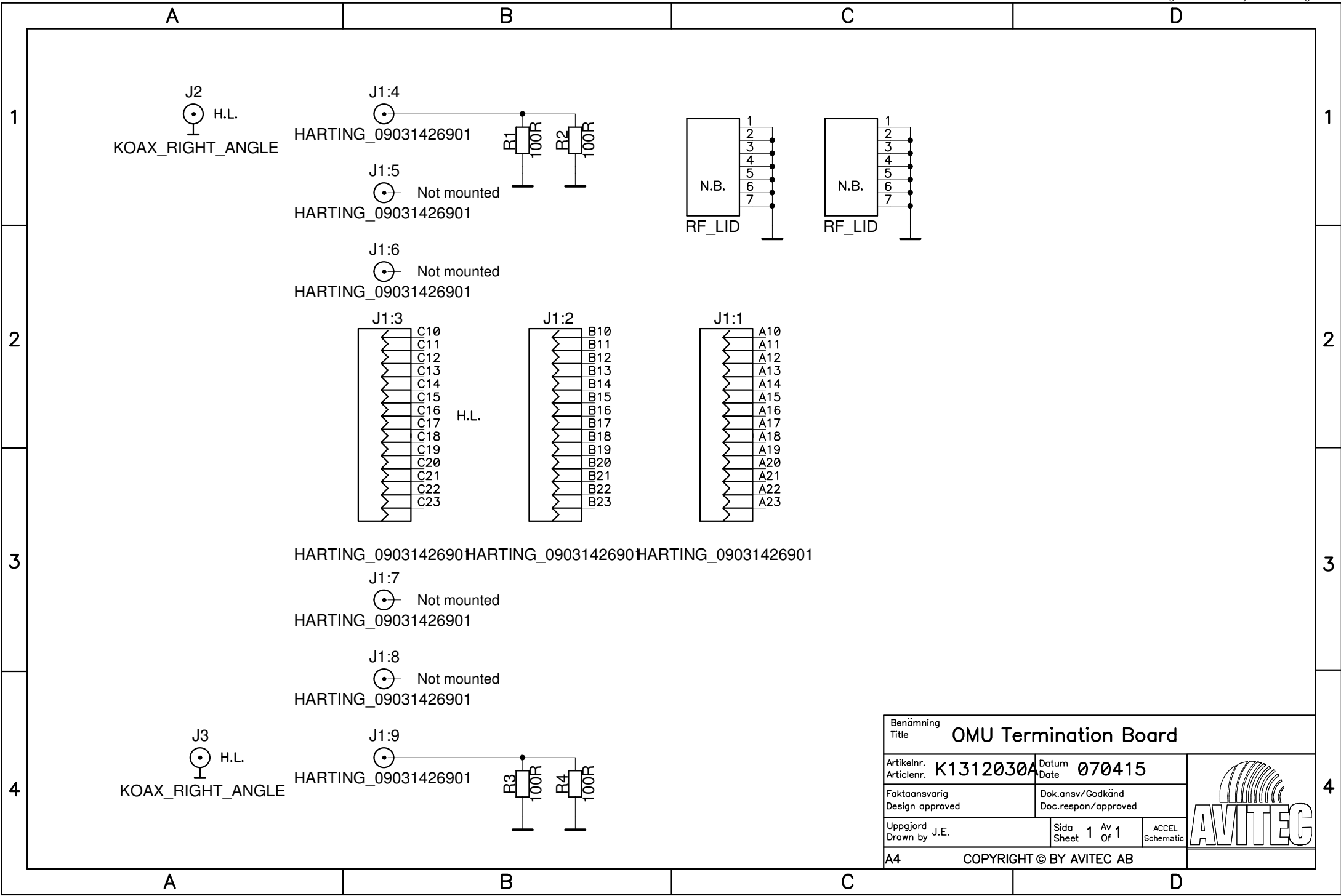
15

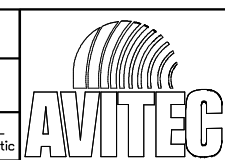
20

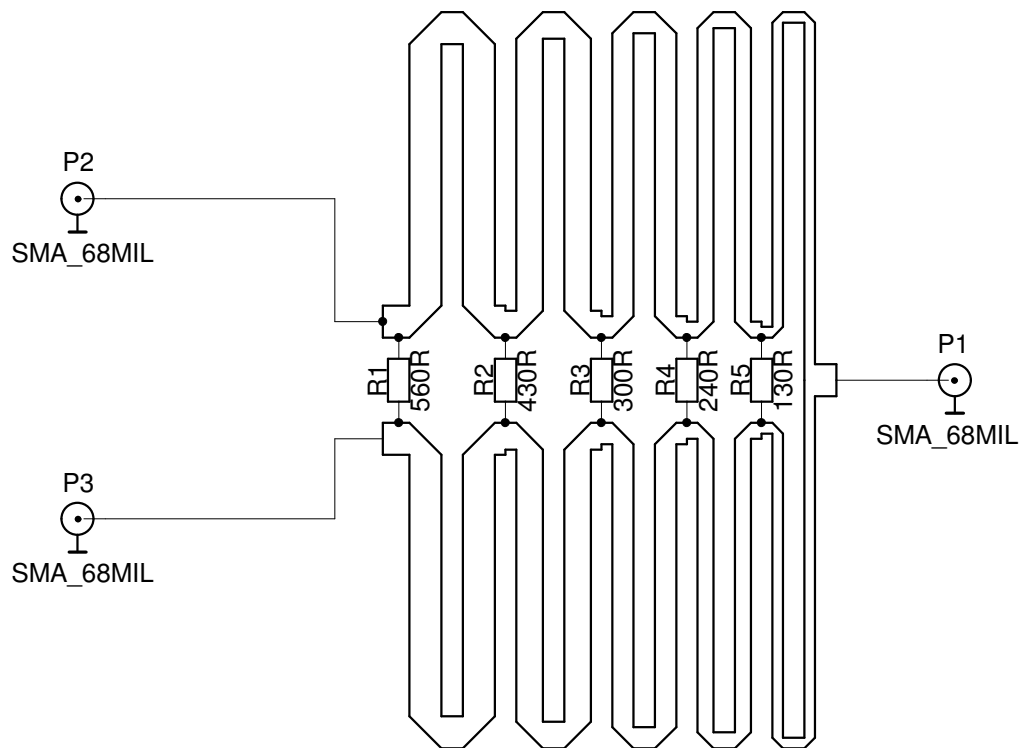
25

30

35



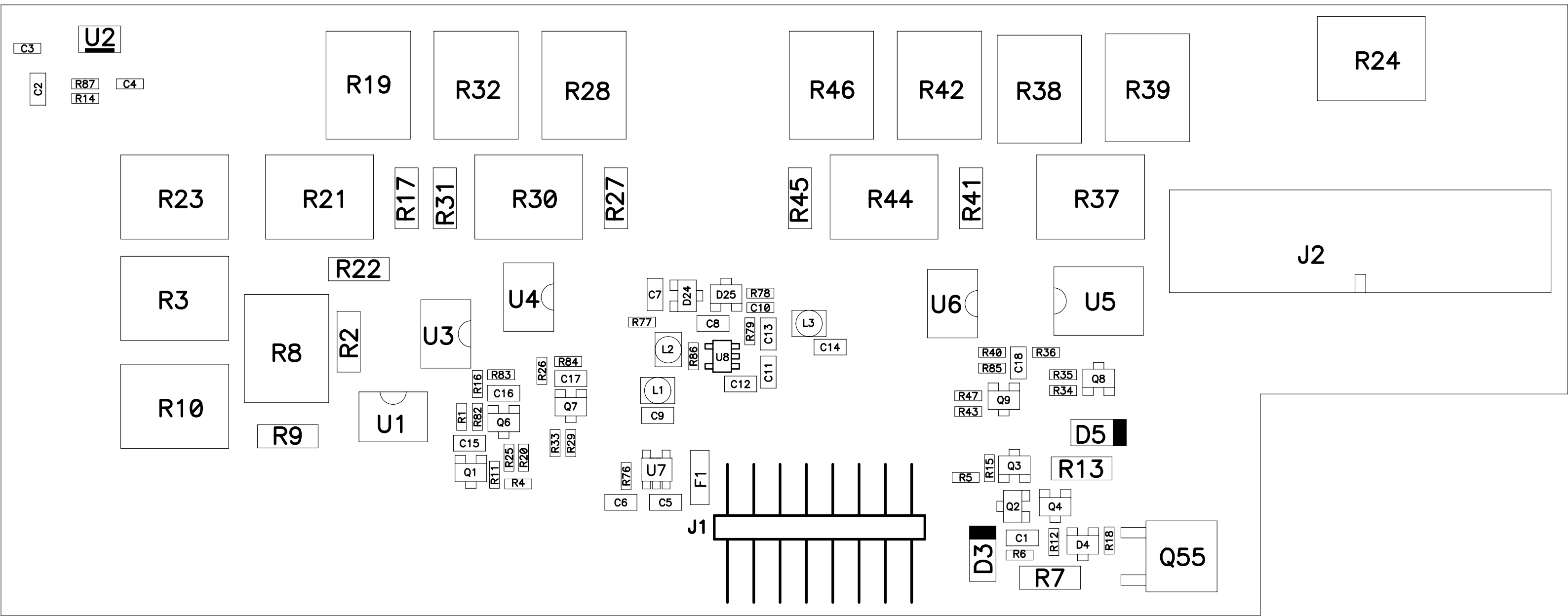
Benämning Title			OMU Termination Board										
Artikelnr. Articlenr.		K1312030A		Datum Date		070415							
Faktaansvarig Design approved			Dok.ansv./Godkänd Doc.respon/approved										
Uppgjord Drawn by			J.E.						Sida Sheet		1 Of		1 1
A4			COPYRIGHT © BY AVITEC AB										



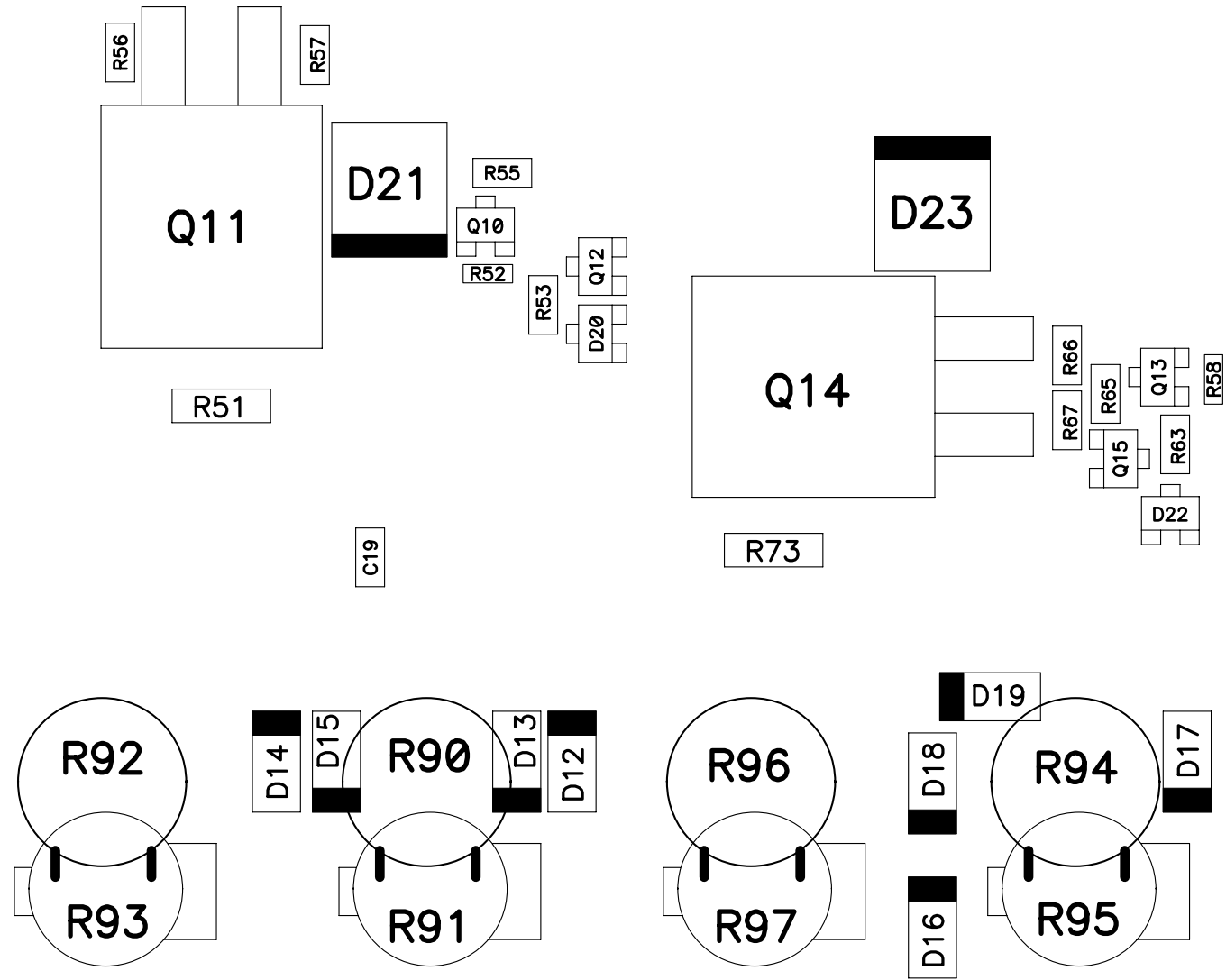
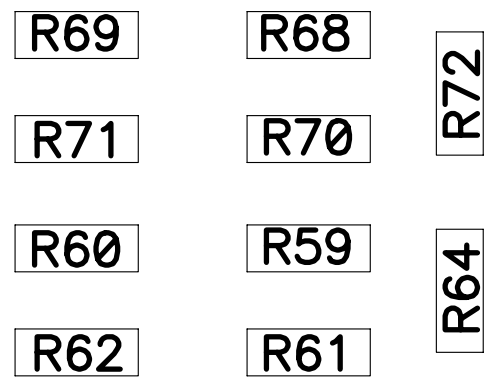
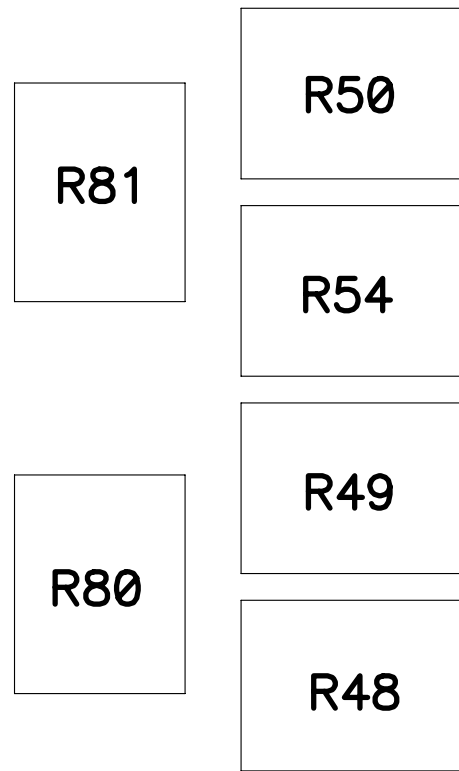
Benämning Title				RF Distribution Module			
Artikelnr. Articlenr.		K1332030A		Datum Date		080306	
Faktaansvarig Design approved				Dok.ansv/Godkänd Doc.respon/approved			
Uppgjord Drawn by			JE		Sida Sheet		1 Of
					ACCEL Schematic		
A4				COPYRIGHT © BY AVITEC AB			

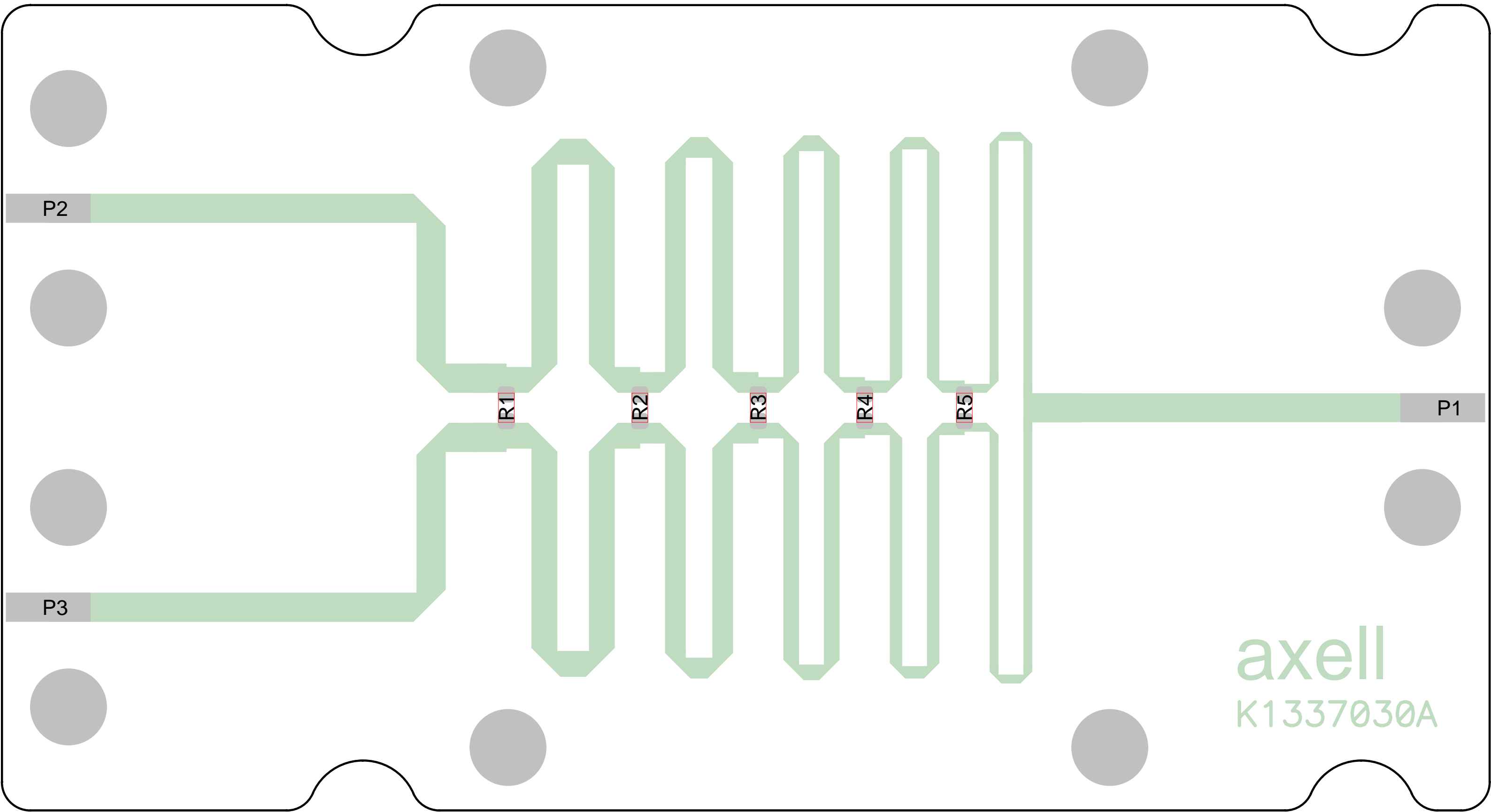


AVITEC AB J697030D External Interface Board NGR 050704 Assembly Drawing Top



AVITEC AB J697030D External Interface Board NGR 050704 Assembly Drawing Bottom





P2

P1

P3

R1

R2

R3

R4

R5

axell
K1337030A