

R031002B Reference Generator.

12-028525 Iss. 1

PTC 17 11 10

Aerial Facilities Limited

ZAPPER
QHDZ-2BH-0.15G
MF 12457
LOT 50240
21

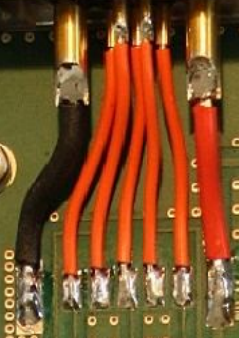
ZAPPER
QHDZ-2BH-0.15G
MF 12457
LOT 50240
21

2959401
-3U PV
L959401

QINRON
604-ZF
2441V
MADE IN JAPAN

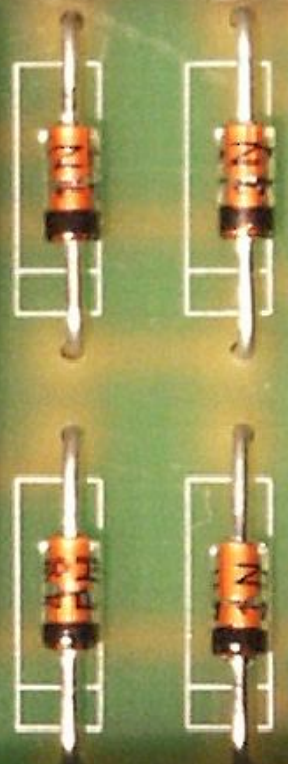
1000K
1000K
1000K

1000K
1000K
1000K



1
2
3
4
5
6
7
8
INCH
Tel: 01268 496100
Tel: 01268 499 0600
Tel: 01268 012000

4V
L1
0V
4V
L2
0V

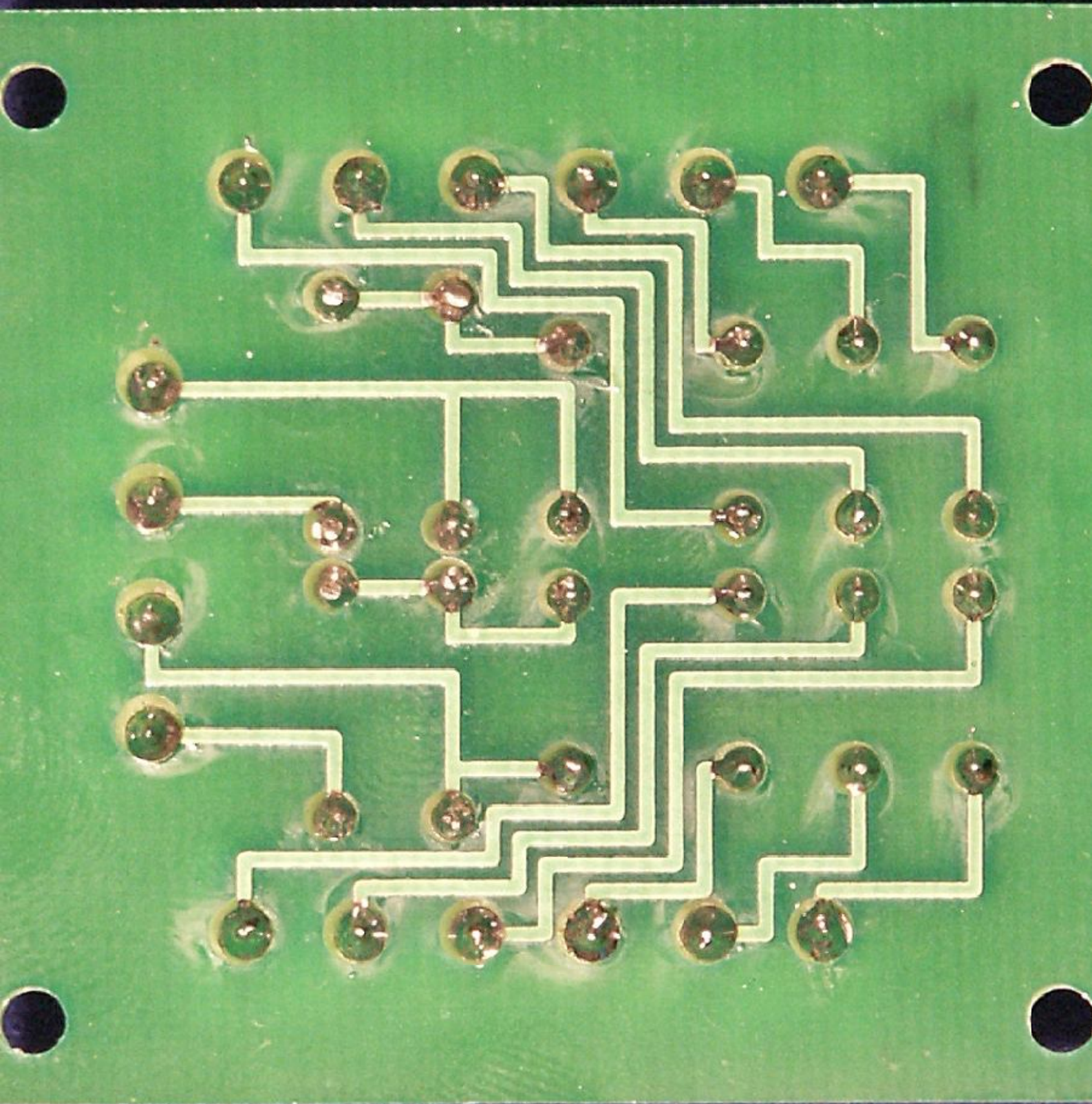


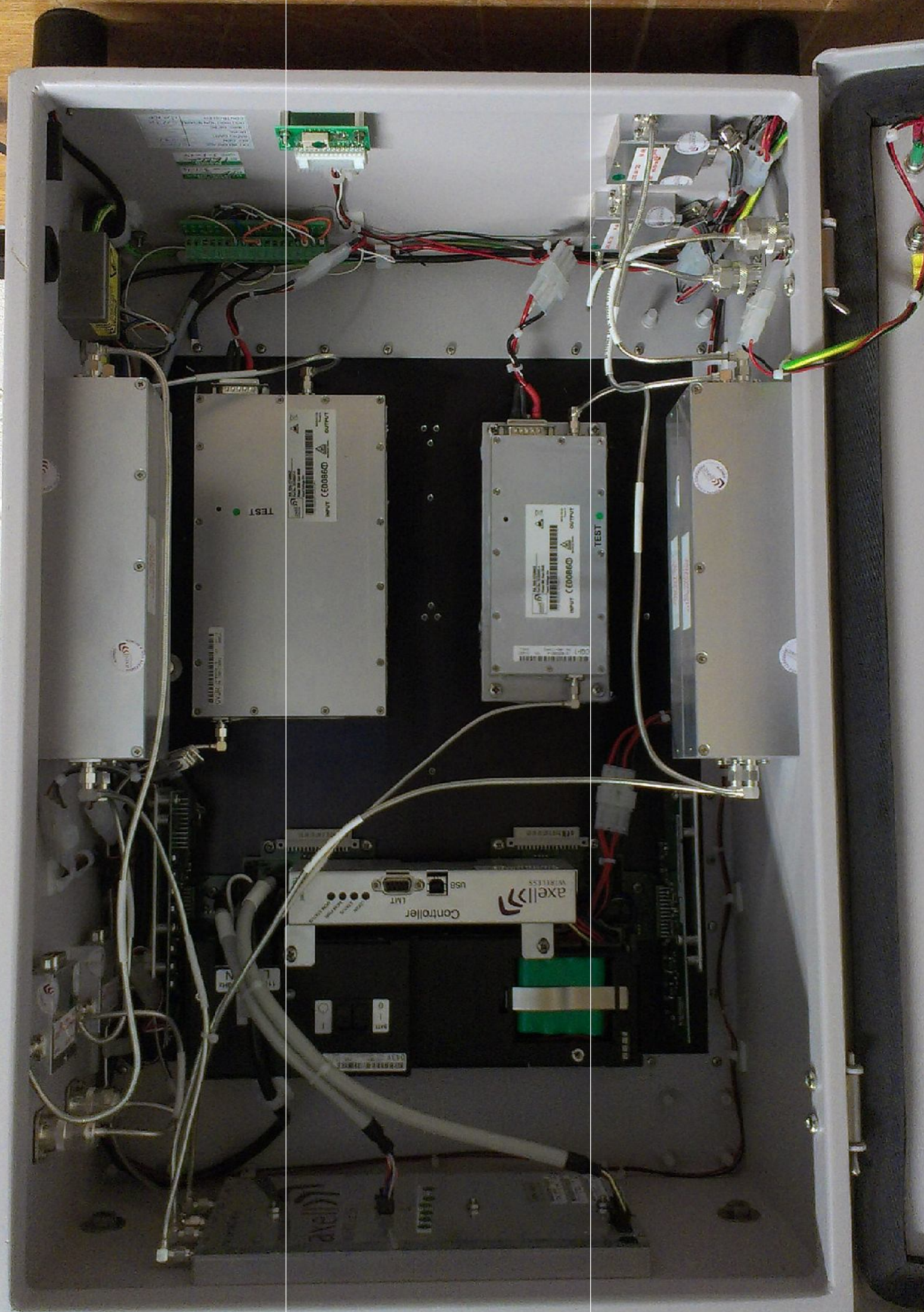
COM N/C N/O COM N/C N/O

AERIAL FACILITIES LTD

20-001625-4 Iss 1

55





axell Wireless
Model: AX-1000
Serial: 1234567890
Date: 2023-10-27

axell Wireless
Model: AX-1000
Serial: 1234567890
Date: 2023-10-27

axell Wireless
Model: AX-1000
Serial: 1234567890
Date: 2023-10-27

axell Wireless
Controller LMT
USB
LMT
axell Wireless

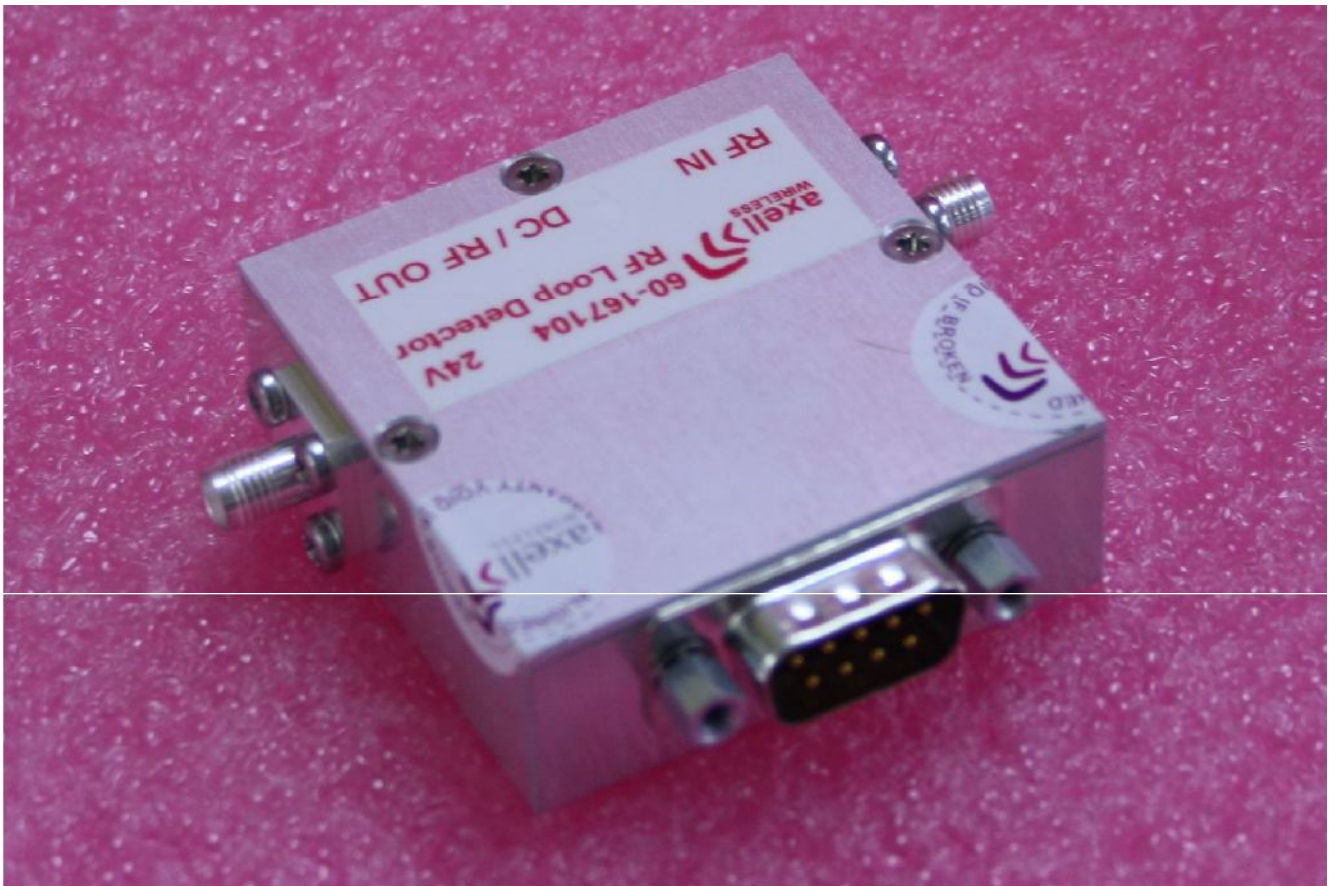
axell Wireless
Model: AX-1000
Serial: 1234567890
Date: 2023-10-27

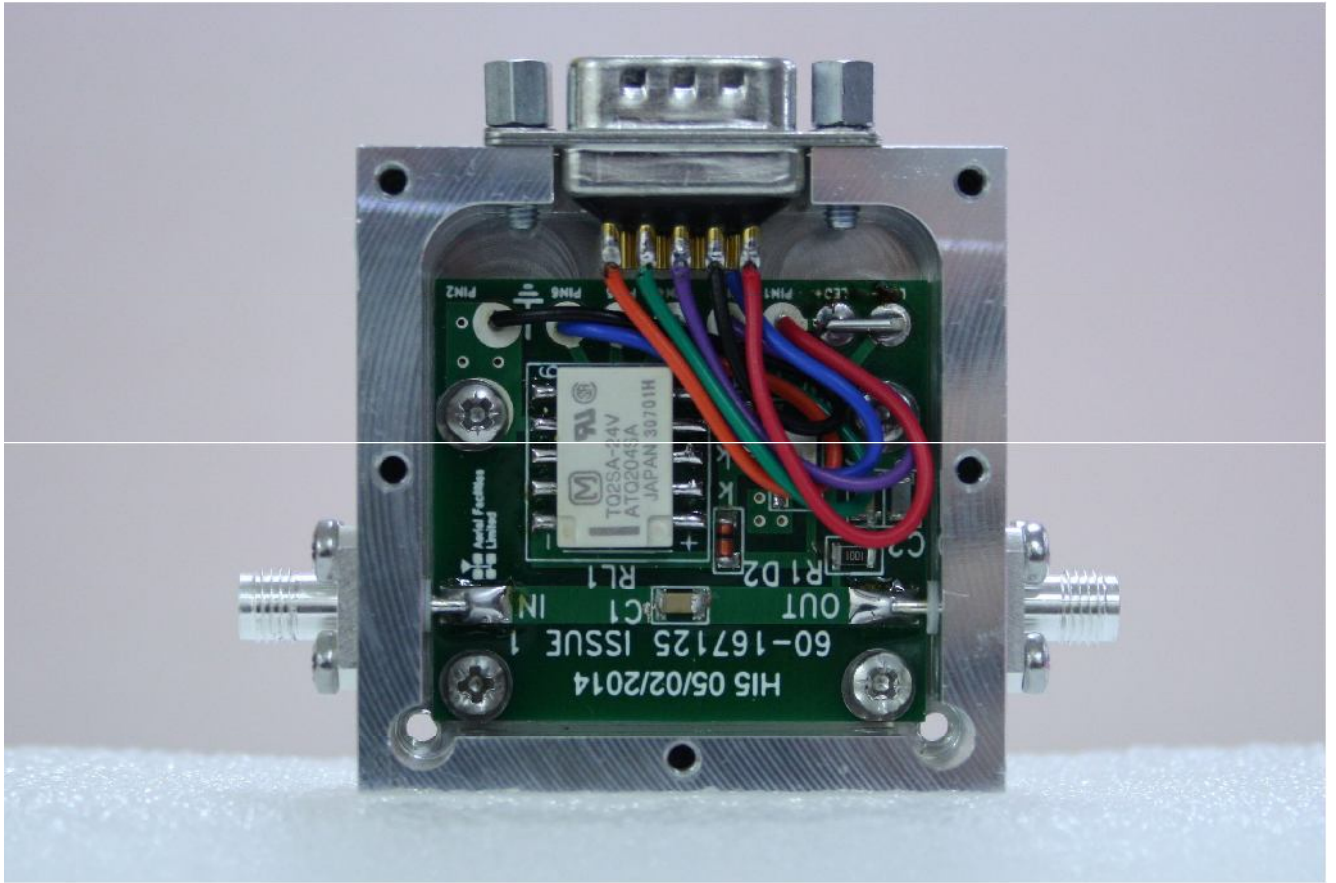
axell Wireless
Model: AX-1000
Serial: 1234567890
Date: 2023-10-27

axell Wireless
Model: AX-1000
Serial: 1234567890
Date: 2023-10-27

axell Wireless
Model: AX-1000
Serial: 1234567890
Date: 2023-10-27

60-167104 RF LOOP DETECTION + RL +24V IN CASE





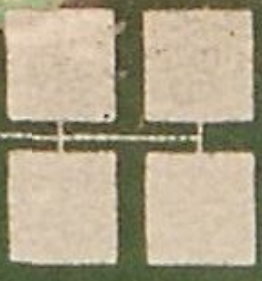
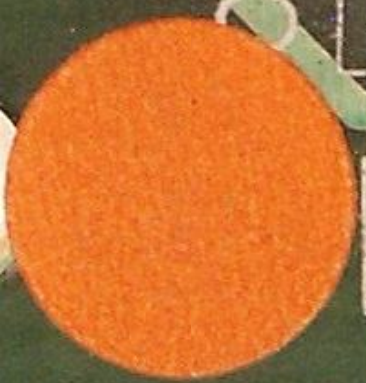
MAIS
TQ2SA-24V
ATO204SA
JAPAN
01127

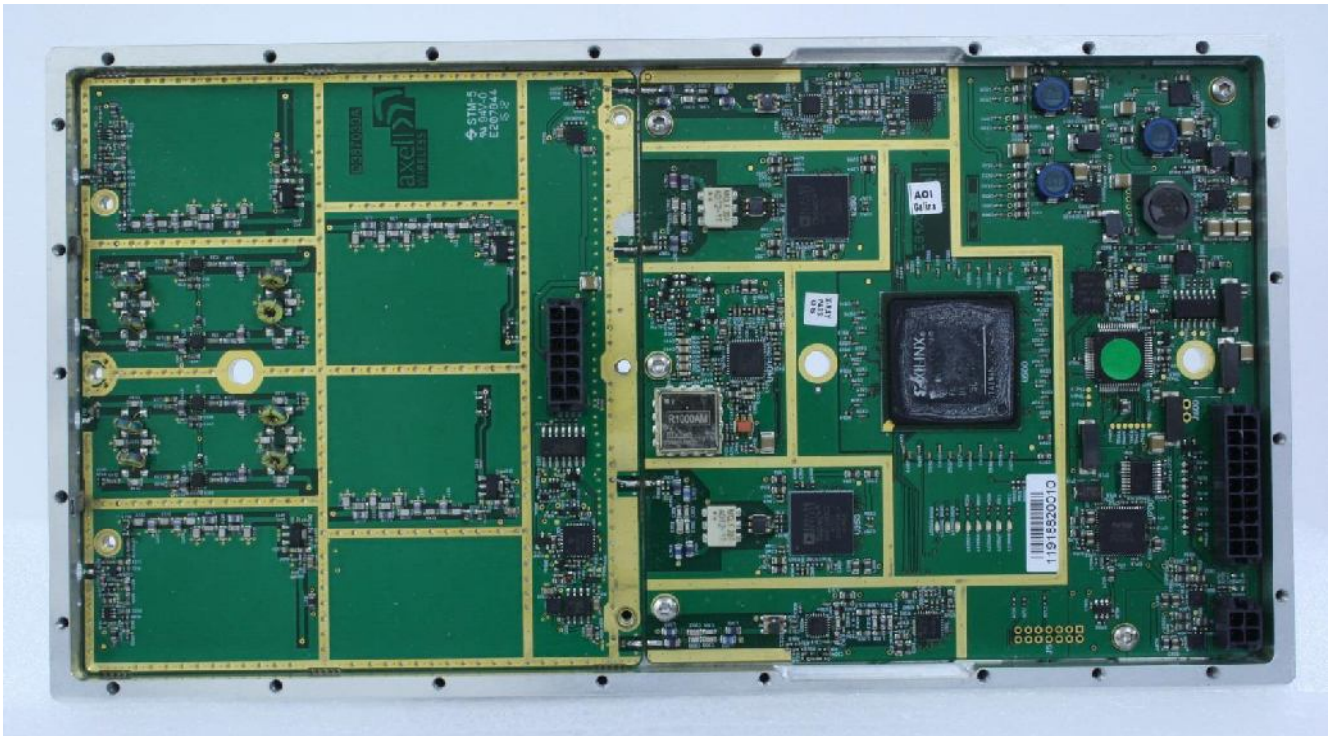
1020

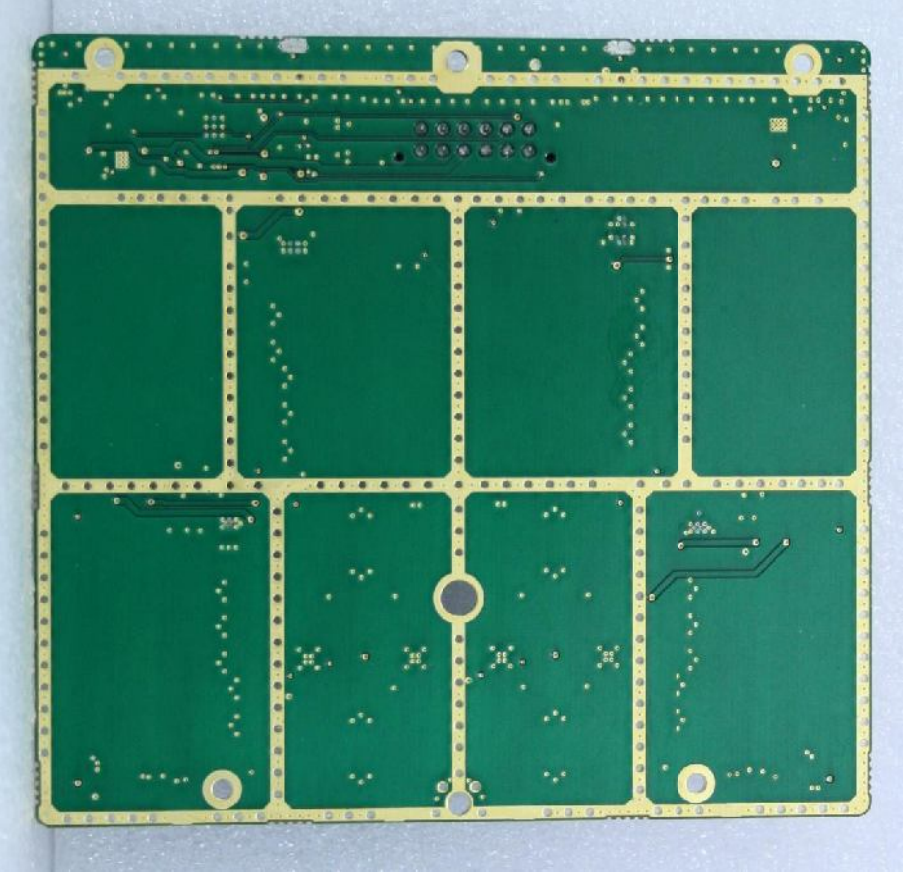
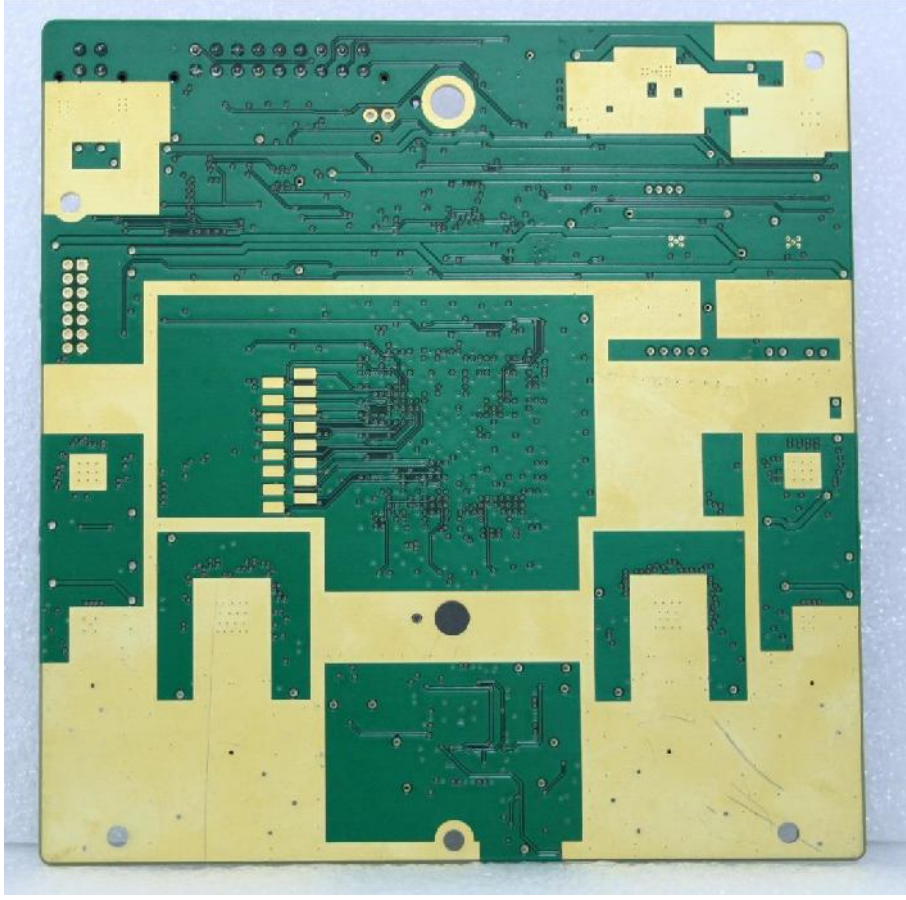
1SS1268800-08

CONN

Series Ltd









Ethernet
10/100

LOGIN
STATUS
MDM PWR
MDM STATUS

Controller LMT

USB

BD

axell
WIRELESS



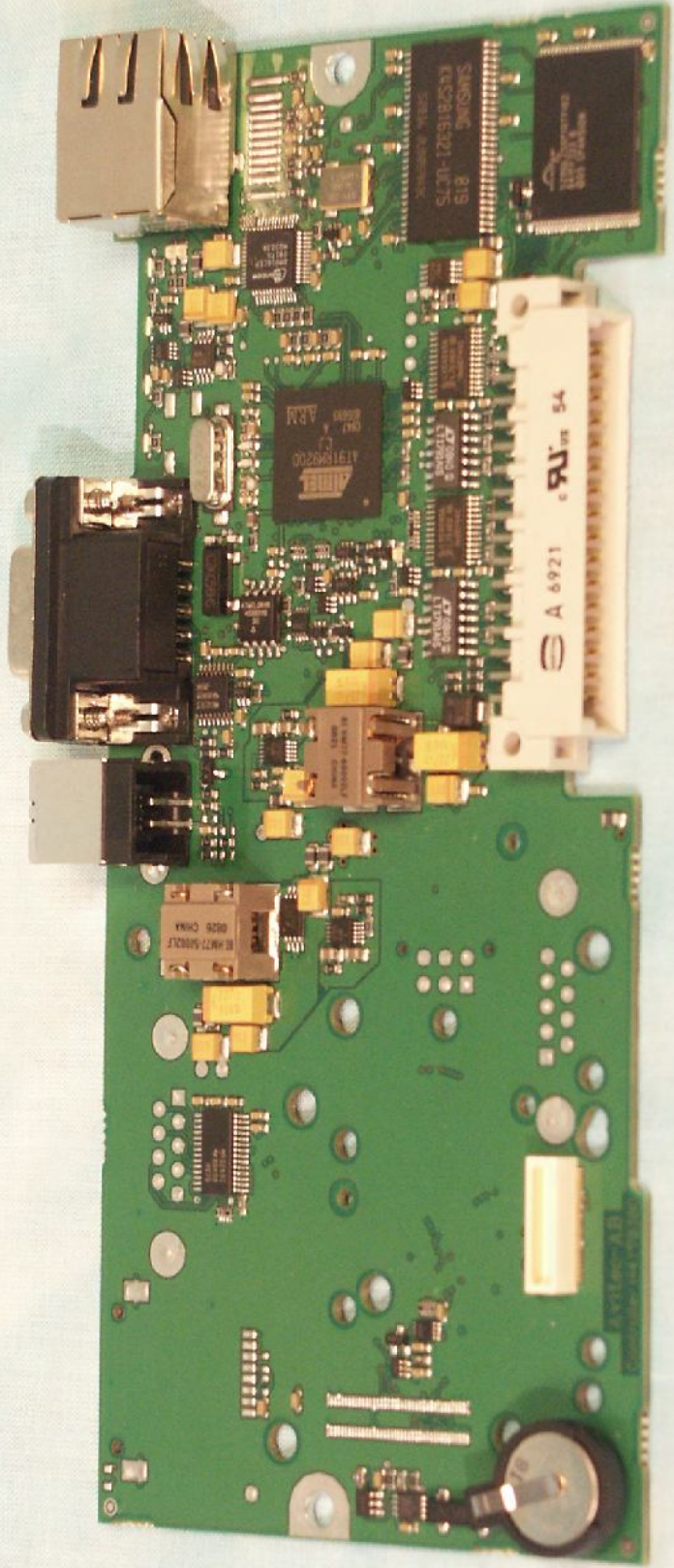
axell
WIRELESS

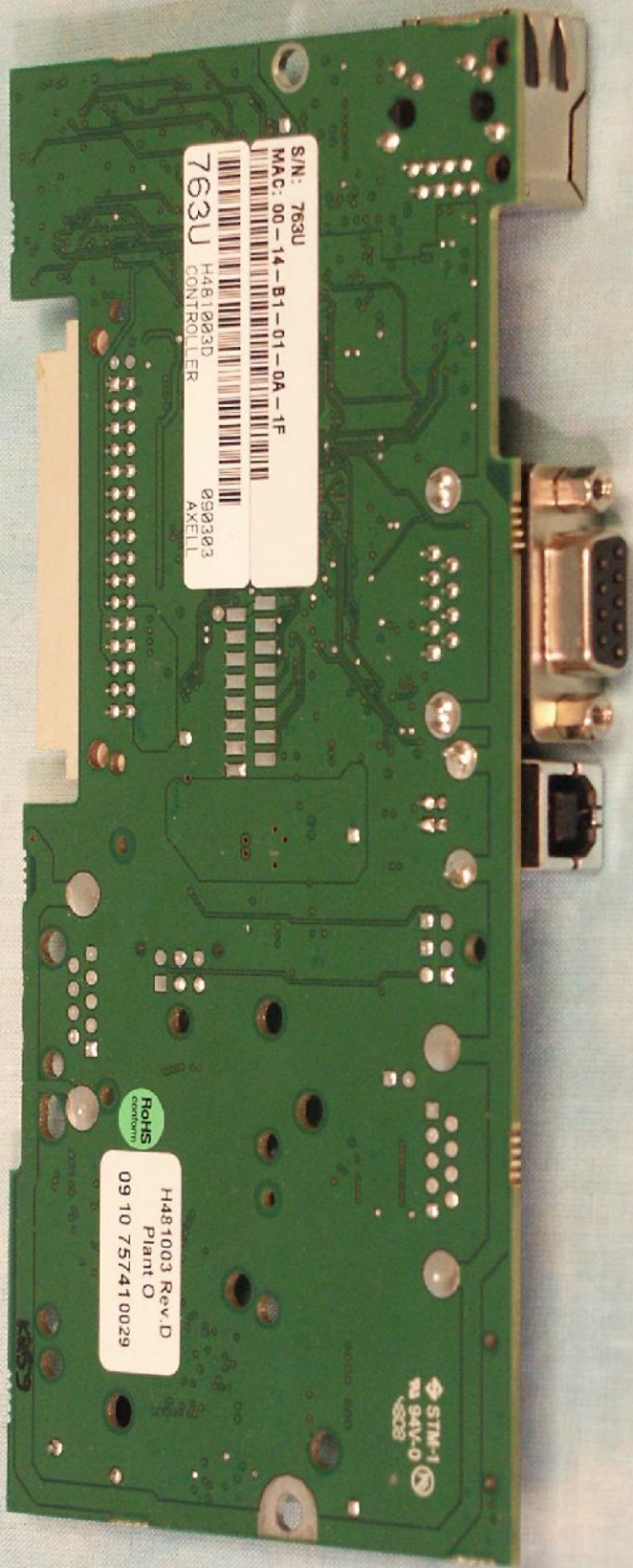
Controller

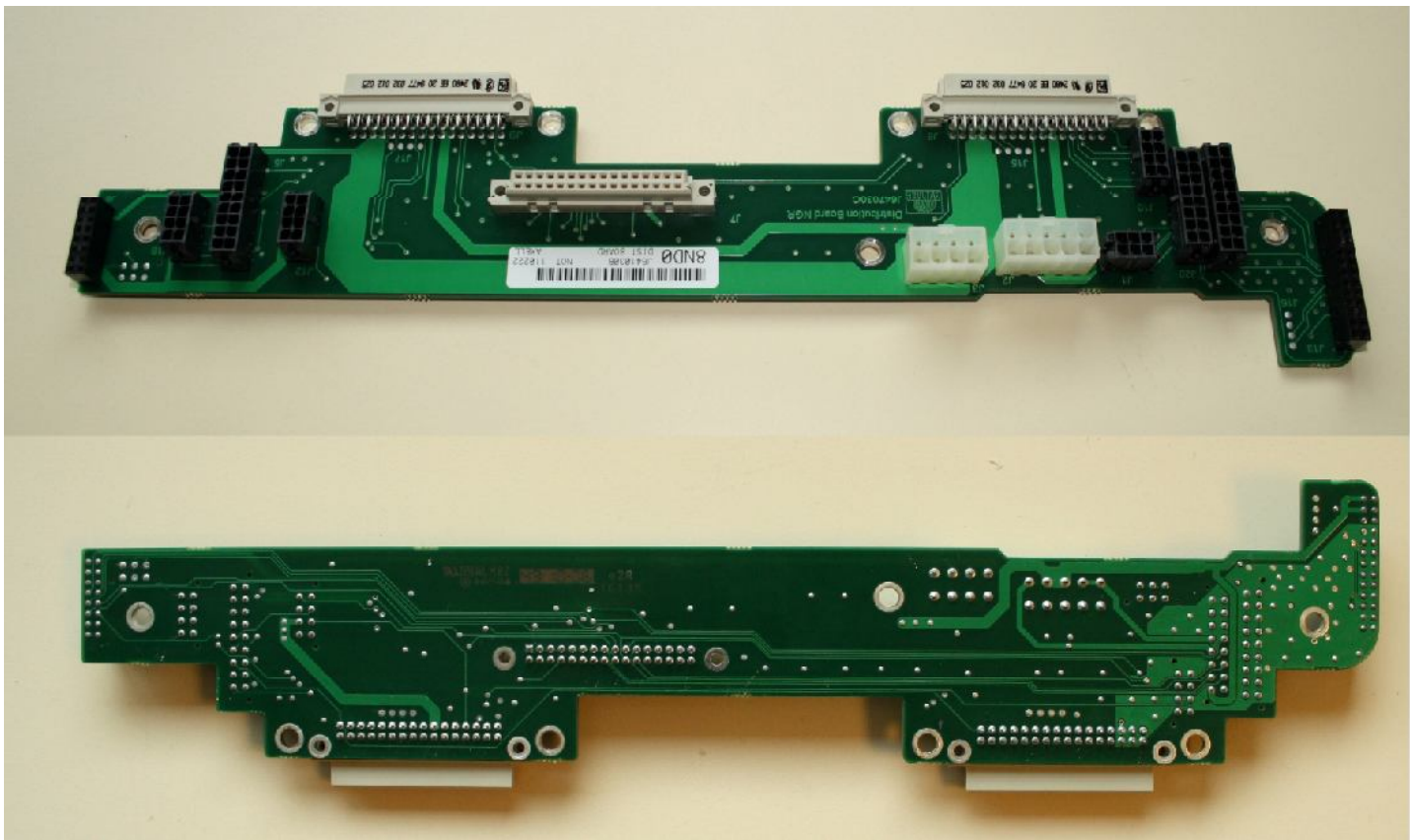
LMT

USB

LOG IN
STATUS
MCM PWR
MCM STATUS
Ethernet
10/100

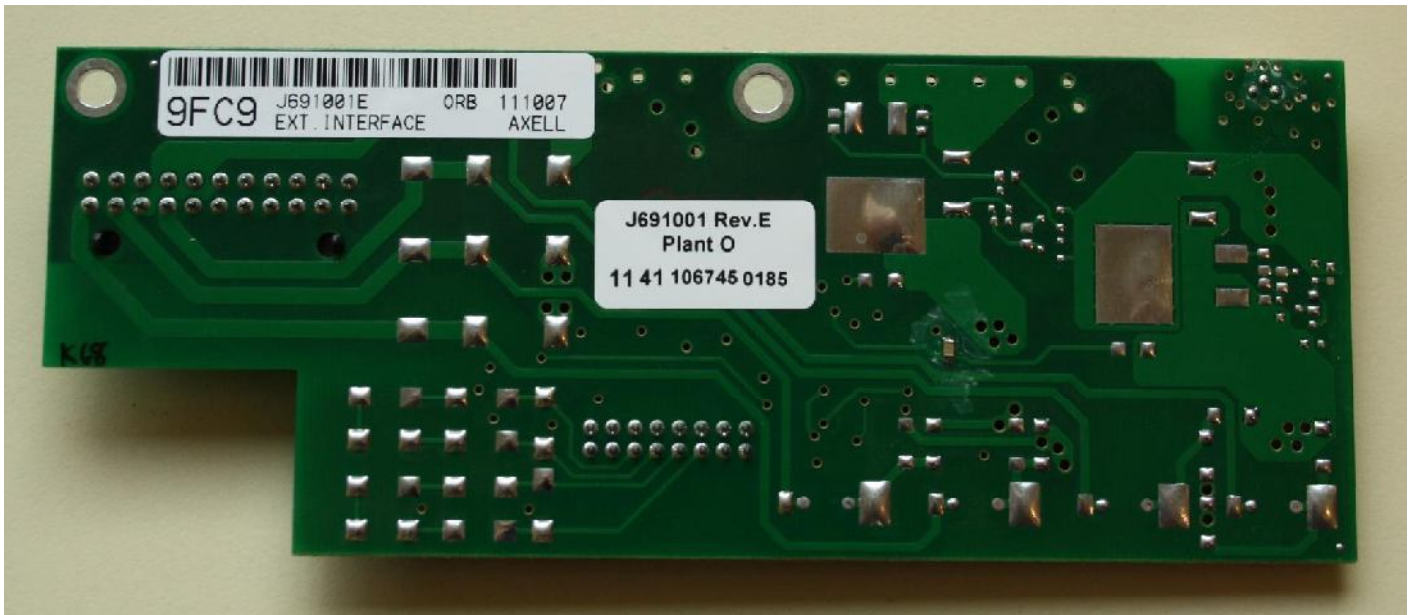
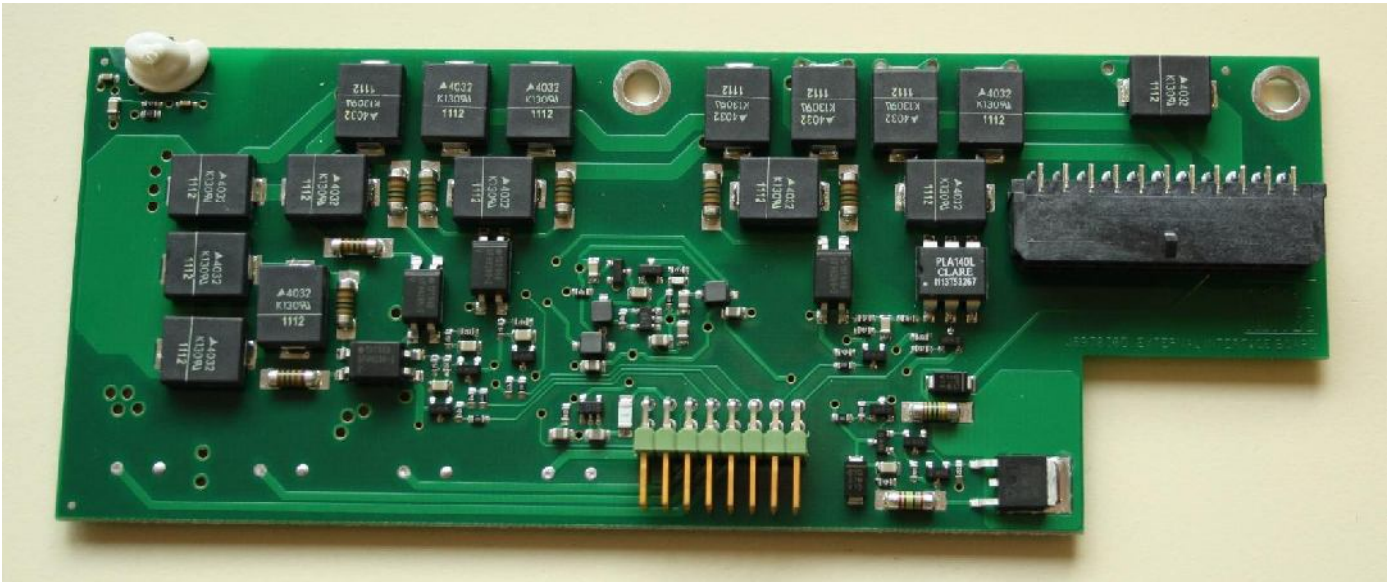


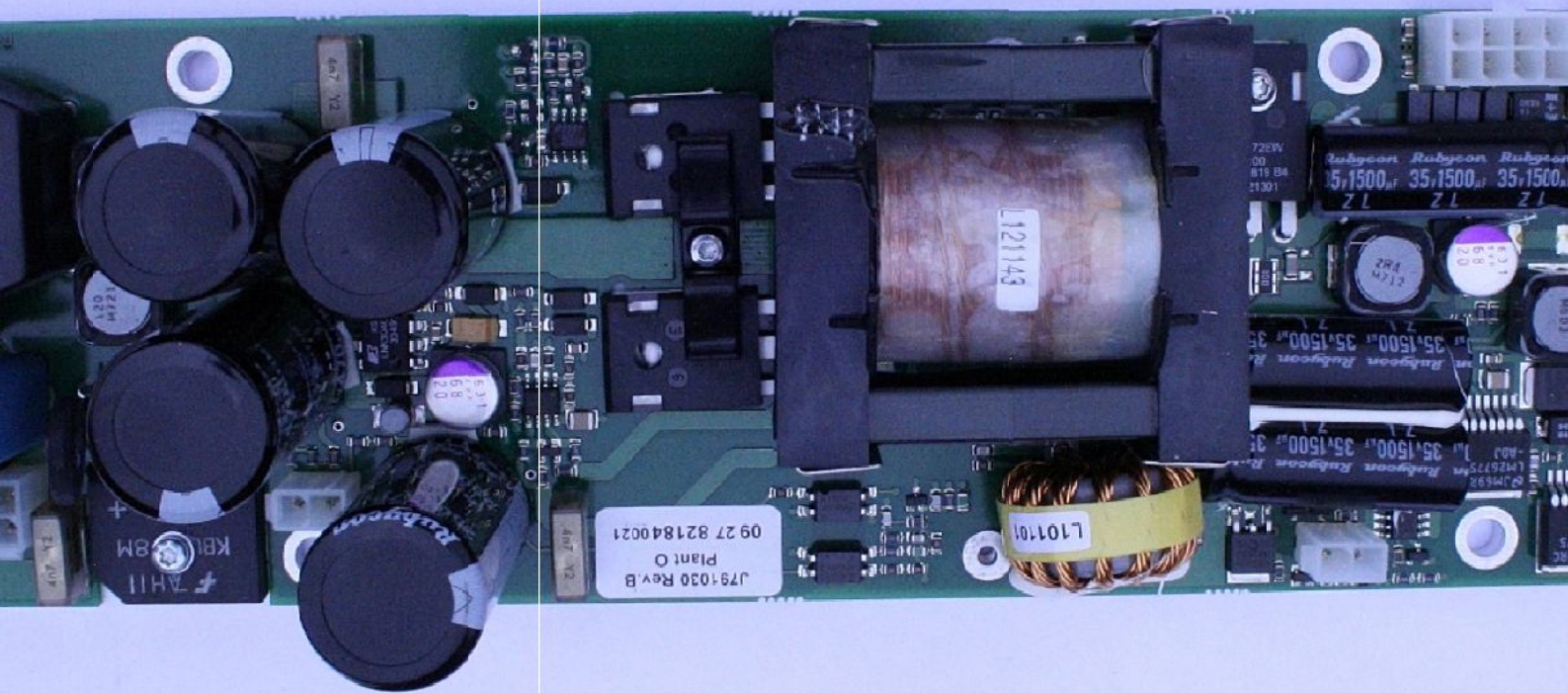
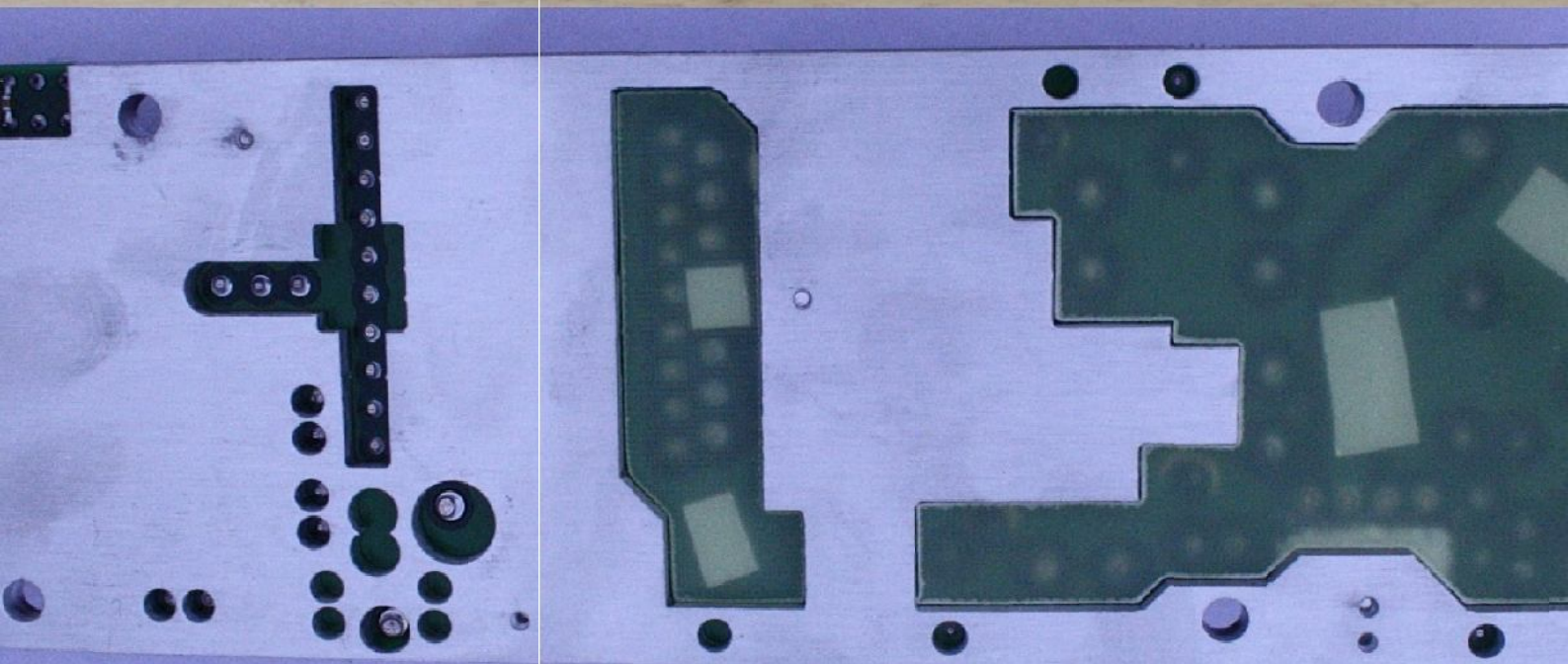
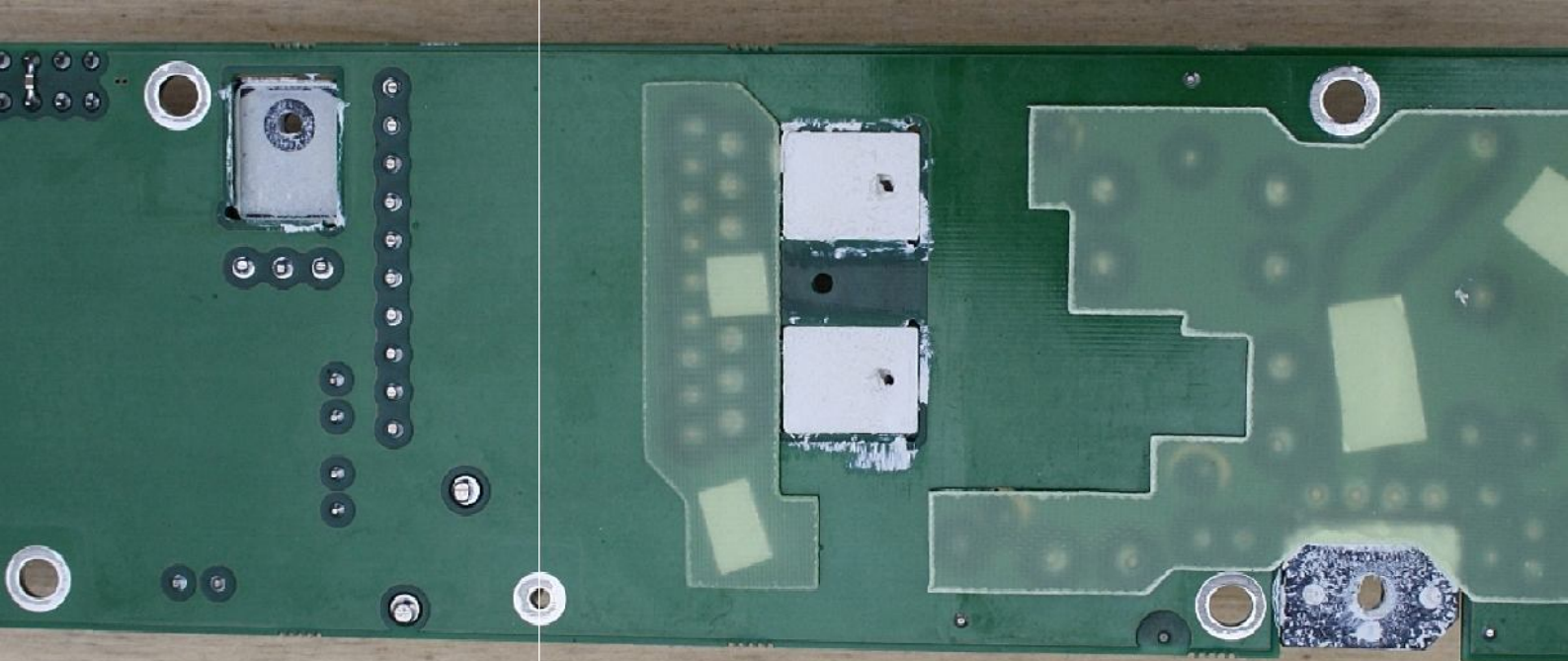




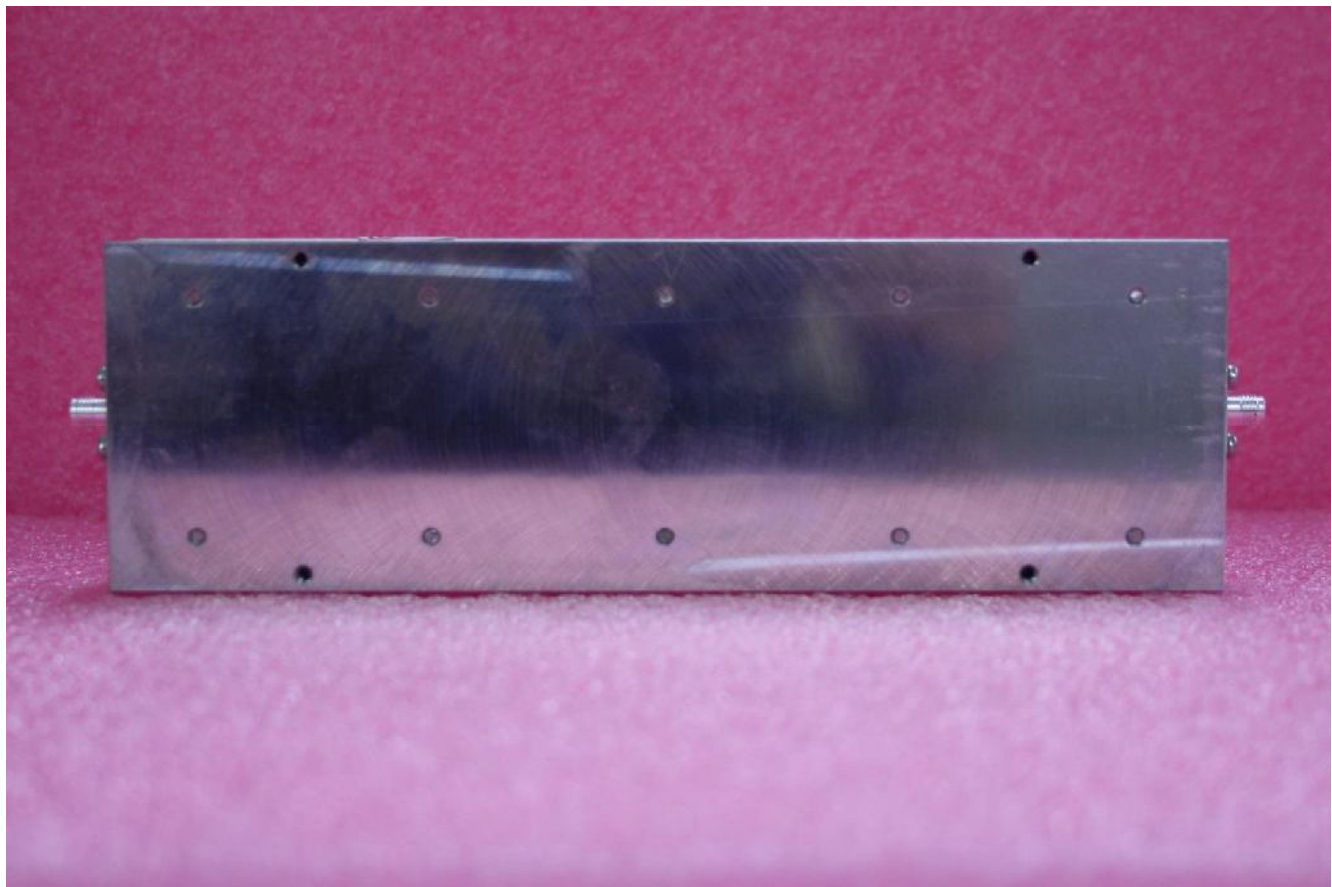
J641030B Distribution Board

J691001 - External Interface Board





01-004575 BANDPASS FILTER 140-175MHZ(15) SMA



01-004575 BANDPASS FILTER 140-175MHZ(15) SMA

