



FCC ID:NDX-RP07470

Registration No. DAT-P-207/05

EMI -- TEST REPORT

Test Report No. :	T32619-00-03HU	19. June 2008 Date of issue
--------------------------	-----------------------	--------------------------------

Type / Model Name : R-PO7470

Product Description : Handheld Reader

Applicant : Datamars SA

Address : Via ai Prati

CH – 6930 Bedano

Manufacturer : Datamars SA

Address : Via ai Prati

CH – 6930 Bedano

Licence holder : Datamars SA

Address : Via ai Prati

CH – 6930 Bedano

Test Result according to the standards listed in clause 1 test standards:	POSITIVE
--	-----------------



DAT-P-207/05-00

The test report merely corresponds to the test sample.
It is not permitted to copy extracts of these test results without the written permission of the test laboratory.

Contents

1	<u>TEST STANDARDS</u>	<u>3</u>
2	<u>SUMMARY</u>	<u>4</u>
3	<u>EQUIPMENT UNDER TEST</u>	<u>5</u>
3.1	PHOTO DOCUMENTATION OF THE EUT	5
3.2	POWER SUPPLY SYSTEM UTILISED	13
3.3	SHORT DESCRIPTION OF THE EQUIPMENT UNDER TEST (EUT)	13
4	<u>TEST ENVIRONMENT</u>	<u>14</u>
4.1	ADDRESS OF THE TEST LABORATORY	14
4.2	ENVIRONMENTAL CONDITIONS	14
4.3	STATEMENT OF THE MEASUREMENT UNCERTAINTY	14
4.4	MEASUREMENT PROTOCOL FOR FCC, VCCI AND AUSTEL	14
5	<u>TEST CONDITIONS AND RESULTS</u>	<u>16</u>
5.1	CONDUCTED EMISSIONS	16
5.2	FIELD STRENGTH OF THE FUNDAMENTAL WAVE	20
5.3	SPURIOUS EMISSIONS (MAGNETIC FIELD) 9 KHz – 30 MHz	22
5.4	RADIATED EMISSIONS (ELECTRIC FIELD) 30 MHz – 1 GHz	24
5.5	EMISSION BANDWIDTH	26
6	<u>USED TEST EQUIPMENT AND ACCESSORIES</u>	<u>28</u>

1 TEST STANDARDS

The tests were performed according to following standards:

FCC Rules and Regulations Part 15 Subpart C- Intentional Radiators (October 01, 2007)

Part 15, Subpart C, Section 15.209(a)	Radiated emissions, general requirements
---------------------------------------	--

Part 15, Subpart C, Section 15.207(a)	AC Line conducted emissions
---------------------------------------	-----------------------------

mikes

2 SUMMARY

GENERAL REMARKS:

While the power supply is connected to the reader, in charging mode, the reader disables the reading mode; therefore is not possible to read a transponder. The other functionalities are fully active.

During data download mode via Bluetooth or USB to a PC it is not possible to set the device in data reading mode. Therefore no co-location test is required.

FINAL ASSESSMENT:

The equipment under test **fulfills** the EMI requirements cited in clause 1 test standards.

Date of receipt of test sample : acc. to storage records

Testing commenced on : 27. Mai 2008

Testing concluded on : 04. June 2008

Checked by:

Tested by:

Thomas Weise
Dipl.-Ing.(FH)
Laboratory Manager

Huber Markus

3 EQUIPMENT UNDER TEST

3.1 Photo documentation of the EuT

Front view:



Rear view:



Bottom view:



FCC ID:NDX-RP07470

Back view open cover:



Antenna view:

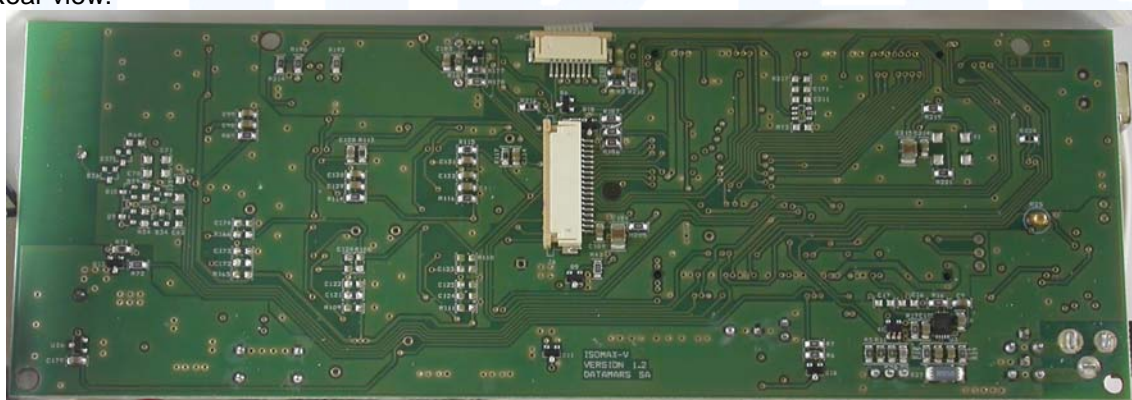


FCC ID:NDX-RP07470

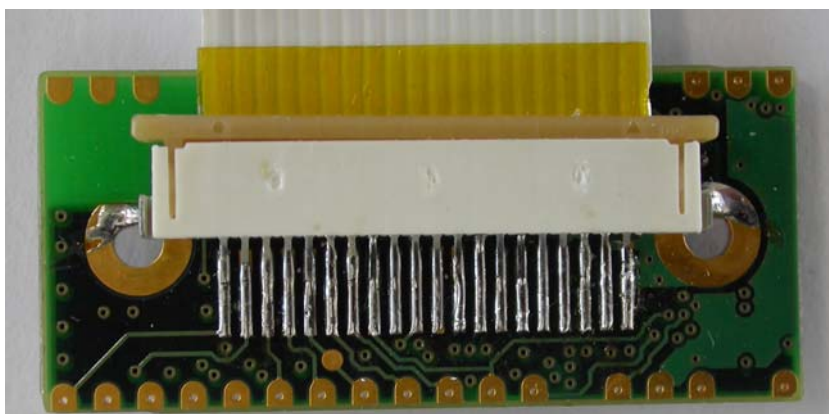
Internal Front view:



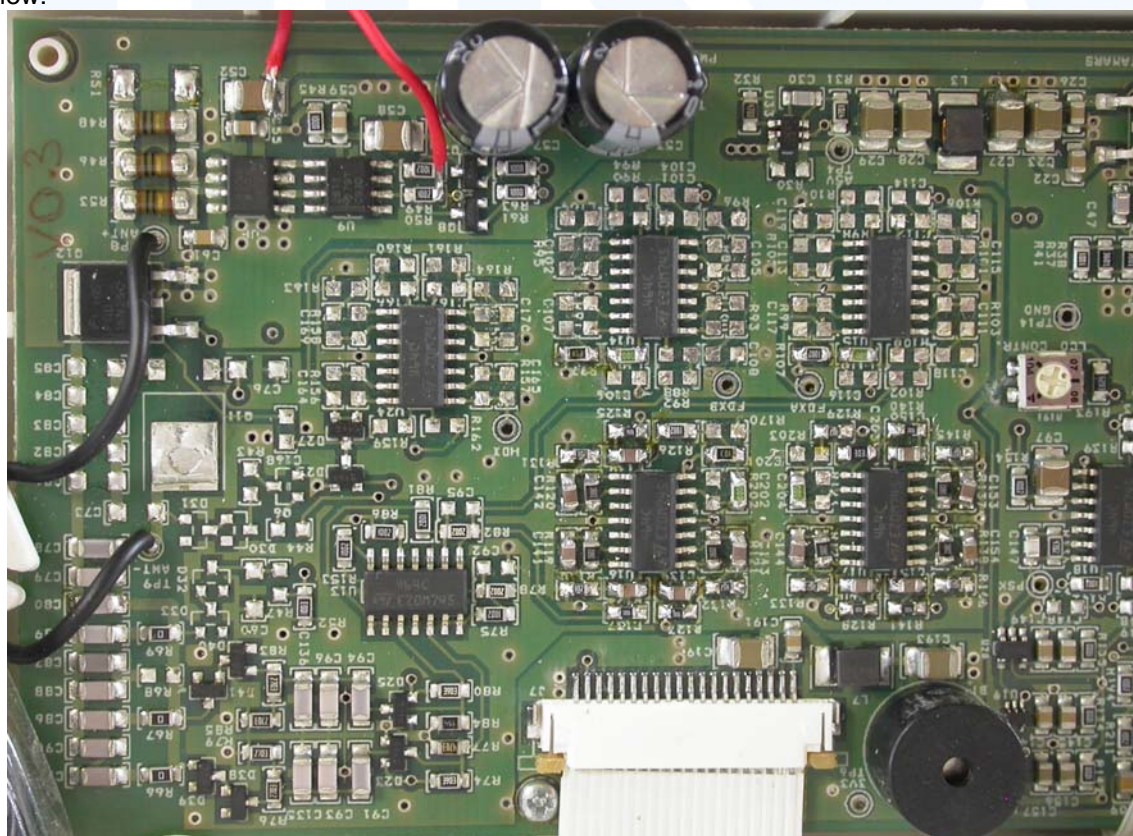
Internal Rear view:



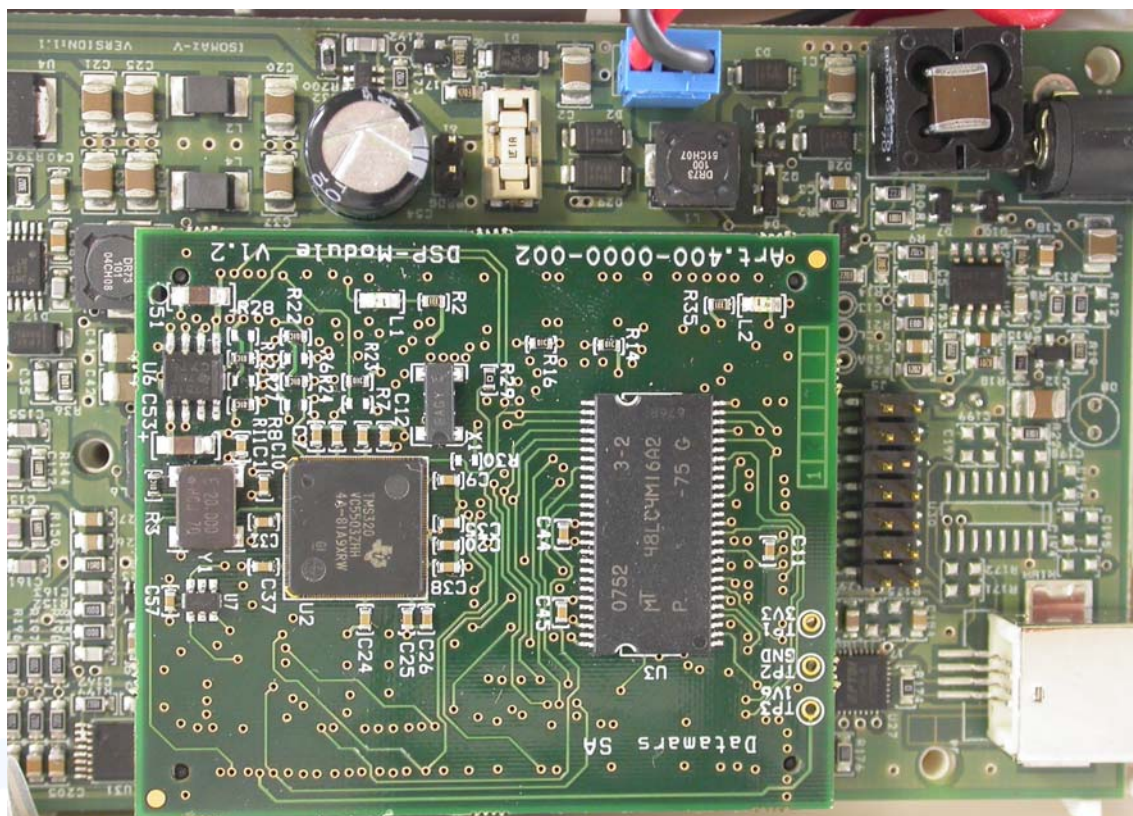
FCC ID:NDX-RP07470



Internal view:



FCC ID:NDX-RP07470

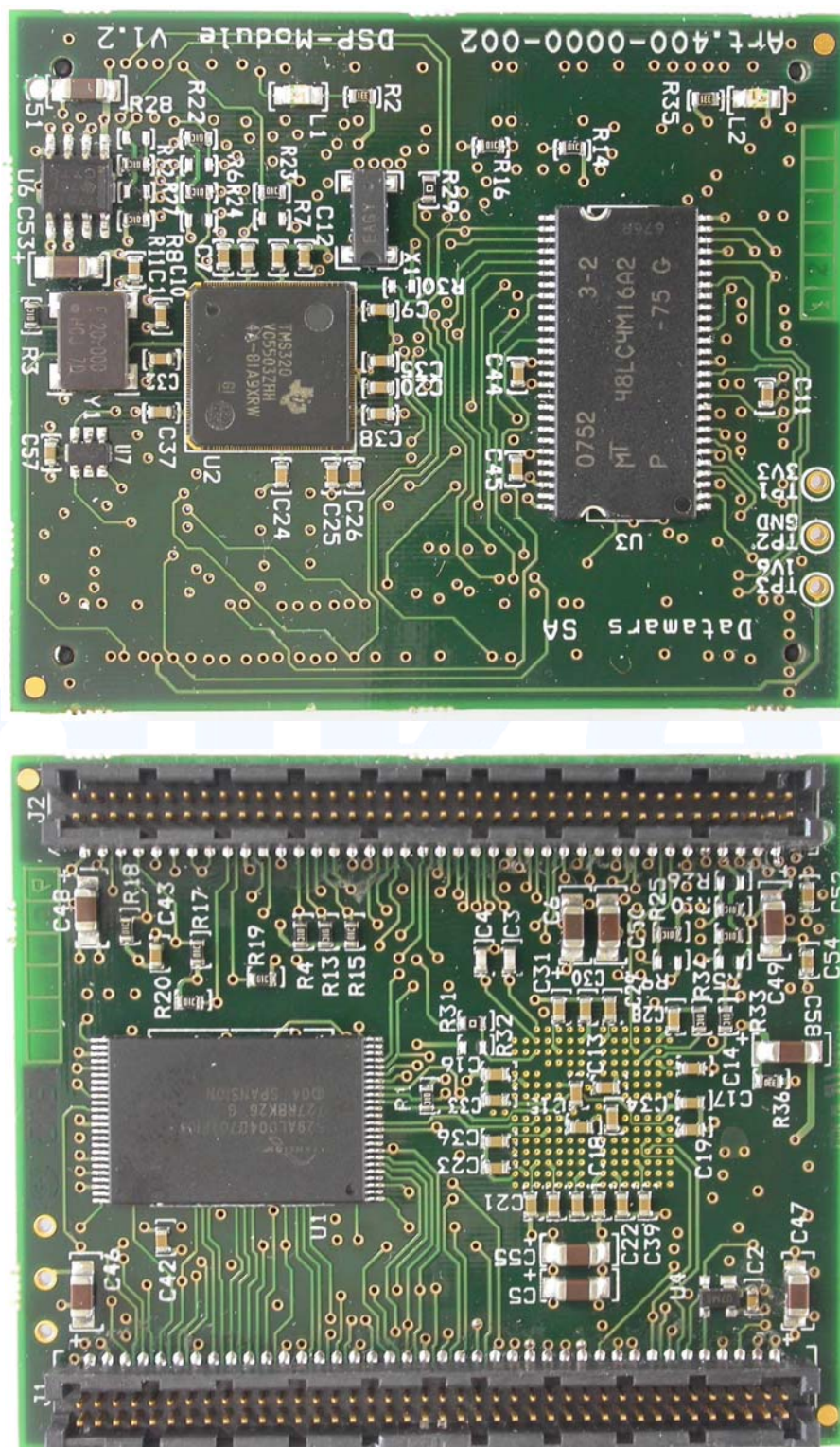


Internal view without DSP Modul:



FCC ID:NDX-RP07470

DSP Module:



FCC ID:NDX-RP07470

Battery & Display module:



FCC ID:NDX-RP07470

Power supply:



3.2 Power supply system utilised

Power supply voltage : 115 V / 60 Hz / 1 ϕ
15 V / DC

3.3 Short description of the Equipment under Test (EuT)

The EuT R-PO7470 is a Handheld Reader for industrial use.

Number of tested samples: 1
Serial number: see Photo documentation of the EuT under Point 3 / Equipment Under Test

EuT operation mode:

The equipment under test was operated during the measurement under the following conditions:

- Continuous sweep mode at 110 kHz

- Battery charging mode

-

EuT configuration:

(The CDF filled by the applicant can be viewed at the test laboratory.)

The following peripheral devices and interface cables were connected during the measurements:

- Power supply Model : Sunpower SPD-A15-15
- Model :
- Model :
- Model :
- Model :
- Model :
- Model :
- customer specific cables
- unscreened power cables

4 TEST ENVIRONMENT

4.1 Address of the test laboratory

mikes-testingpartners gmbh
Ohmstrasse 2-4
94342 Strasskirchen
Germany

4.2 Environmental conditions

During the measurement the environmental conditions were within the listed ranges:

Temperature: 15-35 ° C

Humidity: 30-60 %

Atmospheric pressure: 86-106 kPa

4.3 Statement of the measurement uncertainty

The data and results referenced in this document are true and accurate. The reader is cautioned that there may be errors within the calibration limits of the equipment and facilities. The measurement uncertainty was calculated for all measurements listed in this test report acc. to CISPR 16-4-2 /11.2003 „Uncertainties, statistics and limit modelling – Uncertainty in EMC measurements“ and is documented in the quality system acc. to DIN EN ISO/IEC 17025. Furthermore, component and process variability of devices similar to that tested may result in additional deviation. The manufacturer has the sole responsibility of continued compliance of the device.

4.4 Measurement Protocol for FCC, VCCI and AUSTEL

4.4.1 GENERAL INFORMATION

4.4.1.1 Test Methodology

Conducted and radiated disturbance testing is performed according to the procedures in International Special Committee on Radio Interference (CISPR) Publication 22, European Standard EN 55022 as shown under section 1 of this report.

In compliance with 47 CFR Part 15 Subpart A Section 15.38 testing for FCC compliance may be done following the ANSI C63.4-2003 procedures and using the CISPR 22 Limits.

4.4.1.2 Justification

The Equipment Under Test (EUT) is configured in a typical user arrangement in accordance with the manufacturer's instructions. A cable is connected to each available port and either terminated with a peripheral using the appropriate impedance characteristic or left unterminated. Where appropriate, cables are manually manipulated with respect to each other thus obtaining maximum disturbances from the unit.

4.4.2 DETAILS OF TEST PROCEDURES

General Standard Information

The test methods used comply with CISPR Publication 22, EN 55022 - "Information technology equipment - Radio disturbance characteristics - Limits and methods of measurement" and with ANSI C63.4-2003 - "Methods of Measurement of Radio-Noise Emissions from Low-Voltage Electrical and Electronic Equipment in the Range of 9 kHz to 40 GHz."

mikes

5 TEST CONDITIONS AND RESULTS

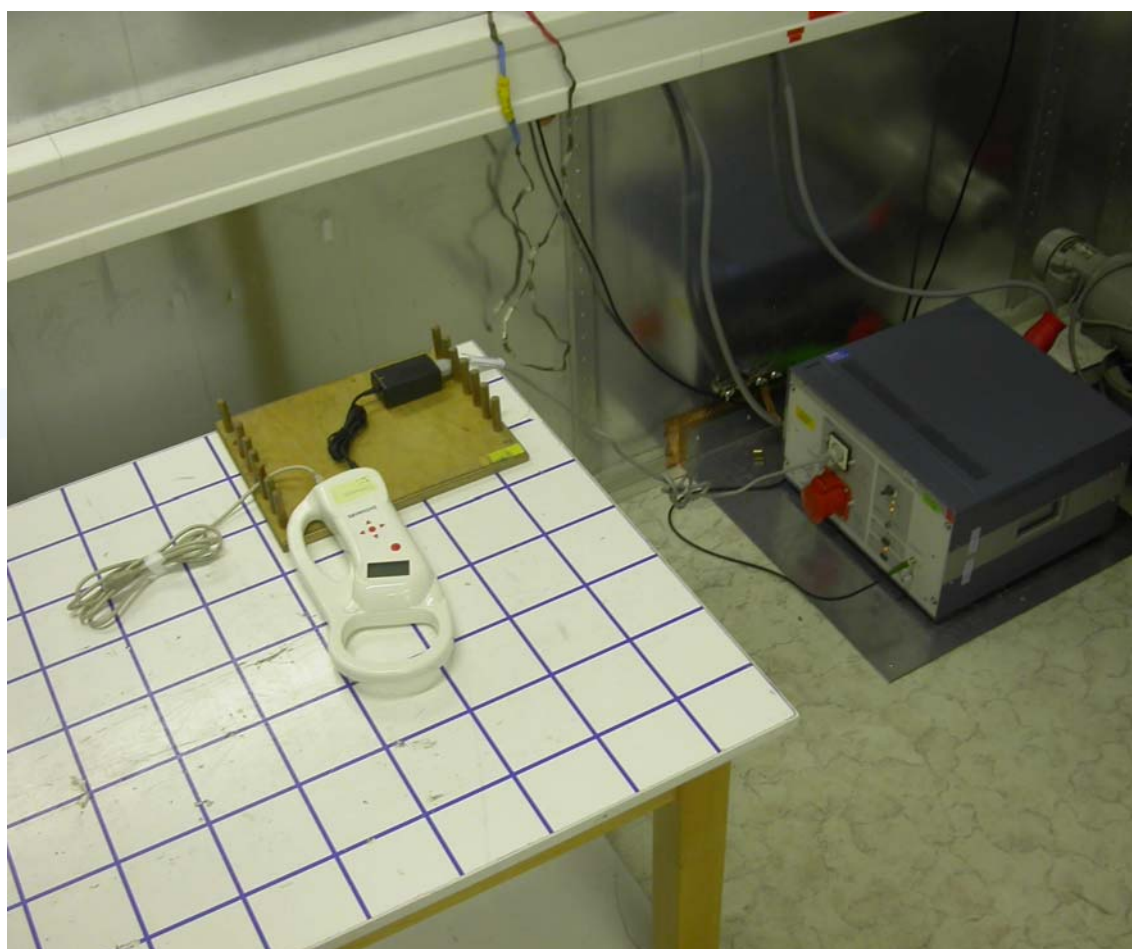
5.1 Conducted emissions

For test instruments and accessories used see section 6 Part A 4.

5.1.1 Description of the test location

Test location: Shielded Room S2

5.1.2 Photo documentation of the test set-up



5.1.3 Description of Measurement

The final level, expressed in dB μ V, is arrived at by taking the reading directly from the EMI receiver. This level is compared directly to the FCC Limit or to the CISPR limit.

To convert between dB μ V and μ V, the following conversions apply:

$$\text{dB}\mu\text{V} = 20(\log \mu\text{V})$$

$$\mu\text{V} = \text{Inverse log}(\text{dB}\mu\text{V}/20)$$

Conducted emissions on the 50 Hz and/or 60 Hz power interface of the EuT are measured in the frequency range of 150 kHz to 30 MHz. The measurements are performed using a receiver, which has CISPR characteristic bandwidth and quasi-peak detection and a Line Impedance Stabilization Network (LISN) with 50 Ω /50 μ H (CISPR 16) characteristics. Table top equipment is placed on a non-conducting table 80 centimeters above the floor and is positioned 40 centimeters from the vertical ground plane (wall) of the screen room. If the minimum limit margin appears to be less than 20 dB with a peak mode measurement, the emissions are remeasured using a tuned receiver with quasi-peak and average detection and recorded on the data sheets.

5.1.4 Test result

Frequency range: 0.15 MHz - 30 MHz

Min. limit margin 5.6 dB at 0.44 MHz

The requirements are **FULFILLED**.

Remarks:

FCC ID:NDX-RP07470

5.1.5 Test protocol

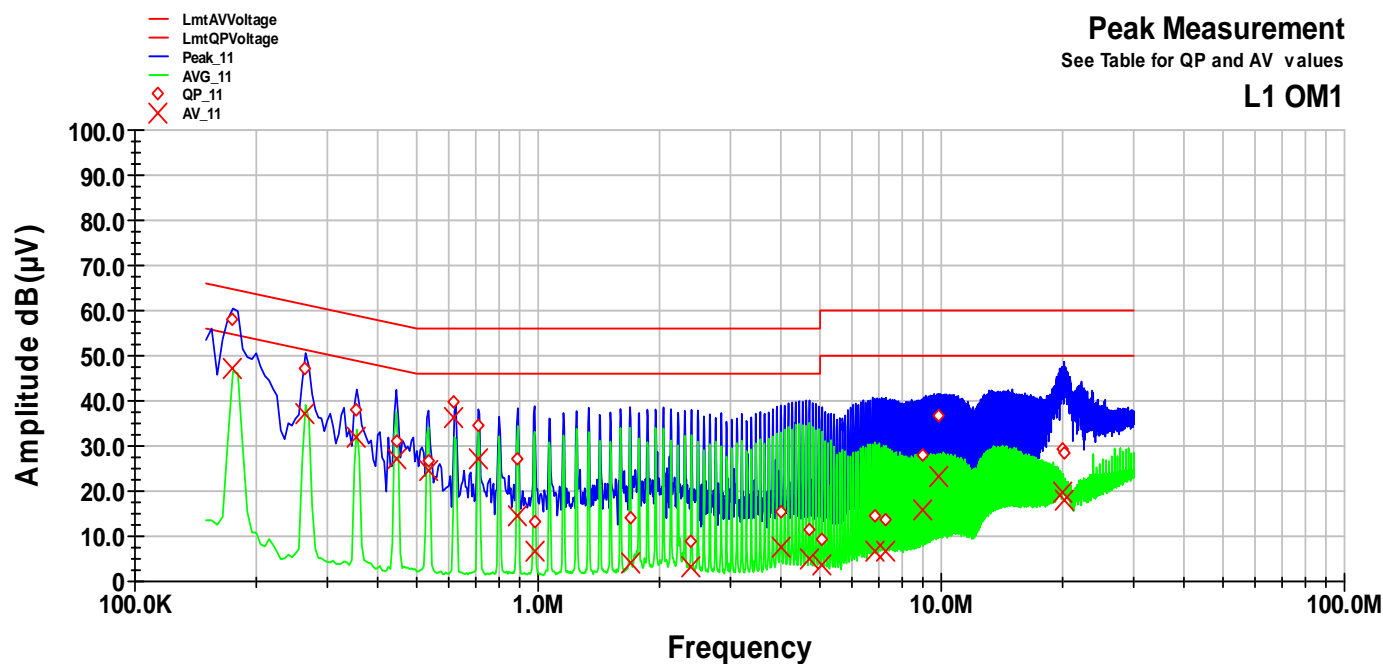
Test point: L1
Operation mode: Charging Mode
Remarks:
Operator: Huber Ma.

Result: passed

Peak Measurement

See Table for QP and AV values

L1 OM1



Frequency MHz	QP Level dB(μV)	QP Margin dB	QP Limit dB	AV Level dB(μV)	AV Margin dB	AV Limit dB
0.175	57.9	-6.9	64.7	47.2	-7.5	54.7
0.265	47.1	-14.2	61.3	37.0	-14.3	51.3
0.355	38.2	-20.6	58.8	31.8	-17.1	48.8
0.445	31.2	-25.8	57.0	27.3	-19.7	47.0
0.535	26.9	-29.1	56.0	24.5	-21.5	46.0
0.62	40.0	-16.0	56.0	36.3	-9.7	46.0
0.71	34.6	-21.4	56.0	27.2	-18.8	46.0
0.89	27.1	-28.9	56.0	14.7	-31.3	46.0
0.98	13.4	-42.6	56.0	6.9	-39.1	46.0
1.69	14.2	-41.8	56.0	3.9	-42.1	46.0
2.4	8.9	-47.1	56.0	3.3	-42.7	46.0
3.995	15.4	-40.6	56.0	7.4	-38.6	46.0
4.705	11.4	-44.5	56.0	4.8	-41.2	46.0
5.06	9.3	-50.7	60.0	3.6	-46.4	50.0
6.835	14.5	-45.5	60.0	6.6	-43.4	50.0
7.28	13.9	-46.2	60.0	6.9	-43.1	50.0
8.97	28.1	-31.9	60.0	15.7	-34.3	50.0
9.855	36.9	-23.1	60.0	23.4	-26.6	50.0
20	29.3	-30.7	60.0	19.8	-30.2	50.0
20.155	28.5	-31.5	60.0	18.0	-32.0	50.0

FCC ID:NDX-RP07470

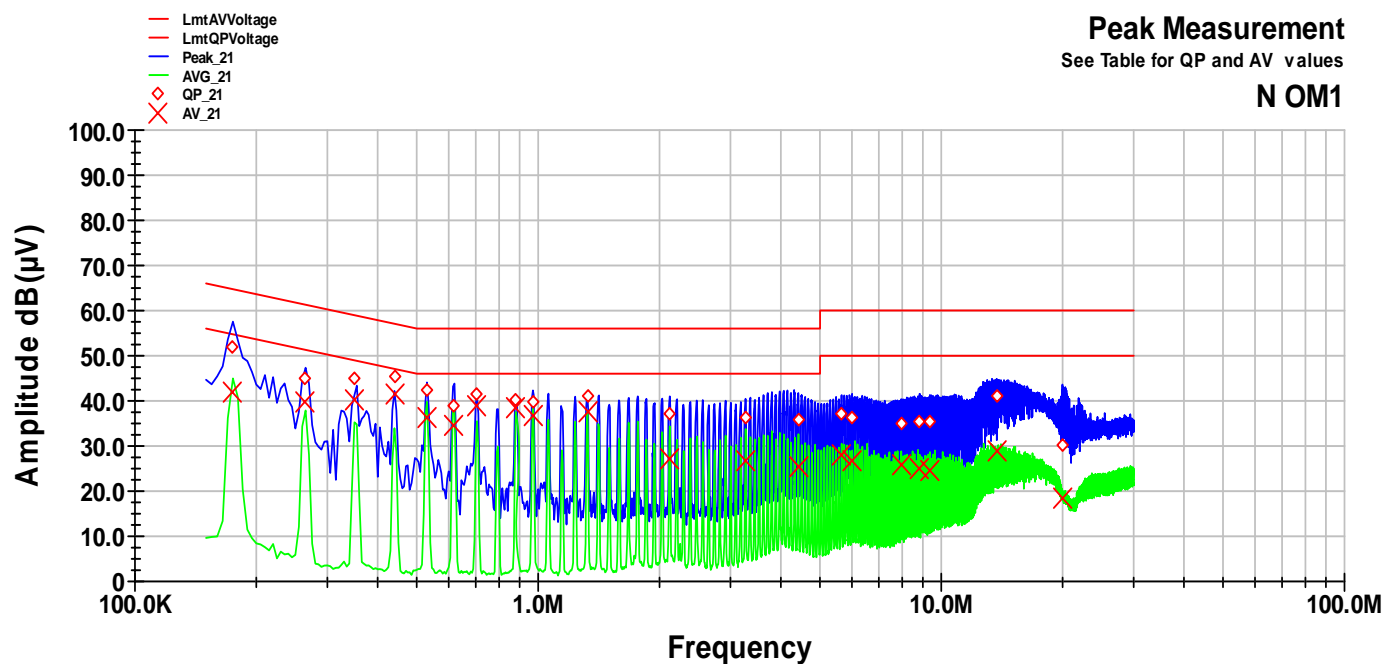
Test point: N
Operation mode: Charging Mode
Remarks:
Operator: Huber Ma.

Result: passed

Peak Measurement

See Table for QP and AV values

N OM1



Frequency MHz	QP Level dB(μV)	QP Margin dB	QP Limit dB	AV Level dB(μV)	AV Margin dB	AV Limit dB
0.175	52.0	-12.8	64.7	41.9	-12.8	54.7
0.265	45.2	-16.1	61.3	39.9	-11.4	51.3
0.35	45.1	-13.9	59.0	40.1	-8.9	49.0
0.44	45.6	-11.5	57.1	41.4	-5.6	47.1
0.53	42.6	-13.4	56.0	36.4	-9.6	46.0
0.615	39.0	-17.0	56.0	34.5	-11.5	46.0
0.705	41.6	-14.4	56.0	39.0	-7.0	46.0
0.88	40.4	-15.6	56.0	38.5	-7.5	46.0
0.97	39.8	-16.2	56.0	36.7	-9.3	46.0
1.325	40.9	-15.1	56.0	37.5	-8.5	46.0
2.12	36.9	-19.1	56.0	27.3	-18.7	46.0
3.27	36.1	-19.9	56.0	26.5	-19.5	46.0
4.42	35.9	-20.1	56.0	25.5	-20.5	46.0
5.655	37.0	-23.0	60.0	28.1	-21.9	50.0
6.005	36.1	-23.9	60.0	26.5	-23.5	50.0
7.95	35.1	-24.9	60.0	25.6	-24.4	50.0
8.83	35.5	-24.5	60.0	25.0	-25.0	50.0
9.36	35.3	-24.7	60.0	24.7	-25.3	50.0
13.705	41.0	-19.0	60.0	28.7	-21.3	50.0
20.075	30.2	-29.8	60.0	18.3	-31.7	50.0

5.2 Field strength of the fundamental wave

For test instruments and accessories used see section 6 Part CPR 1.

5.2.1 Description of the test location

Test location: OATS1

Test distance: 3 metres

5.2.2 Photo documentation of the test set-up



5.2.3 Description of Measurement

The magnetic field strength from the EuT will be measured on an open area test site in the frequency range of 9 kHz to 30 MHz using a tuned receiver and a shielded loop antenna. The set up of the Equipment under test will be in accordance to ANSI C63.4-2003. The antenna was positioned 3, 10 or 30 meters horizontally from the EuT. Measurements have been made in all three orthogonal axes and the shielded loop antenna was rotated to locate the maximum of the emissions. In the case where larger measuring distances are required the results will extrapolated based on the values measured on the closer distances according to Section 15.31 (f) (2) [2]. The final measurement will be performed with an EMI Receiver set to Quasi Peak detector except for the frequency bands 9 kHz to 90 kHz and 110 to 490 kHz where an average detector will be used according to Section 15.209 (d) [2].

The final level, expressed in $\text{dB}\mu\text{V}/\text{m}$, is arrived at by taking the reading from the EMI receiver (Level $\text{dB}\mu\text{V}$) and adding the antenna correction factor and cable loss factor (Factor dB) to it. This result then has to be compared with the relevant FCC limit.

The resolution bandwidth during the measurement is as follows:

9 kHz – 150 kHz: ResBW: 200 Hz

150 kHz – 30 MHz: ResBW: 9 kHz

FCC ID:NDX-RPO7470

Example:

Frequency (MHz)	Level (dBμV)	+	Factor (dB)	=	Level (dBμV/m)	Limit (dBμV/m)	=	Delta (dB)
1.705	5	+	20	=	25	30	=	5

5.2.4 Test result

Measured 3m:

Frequency [kHz]	L: PK [dBμV]	L: AV [dBμV]	L: QP [dBμV]	Correct. [dB]	L: PK [dBμV/m]	L: AV [dBμV/m]	L: QP [dBμV/m]	Limit [dBμV/m]	Delta [dB]
110.0	71.9	71.7	71.8	20	91.9	91.7	91.8	106.78	18.1

Calculated 30m:

Frequency [kHz]	L: PK [dBμV]	L: AV [dBμV]	L: QP [dBμV]	Correct. [dB]	L: PK [dBμV/m]	L: AV [dBμV/m]	L: QP [dBμV/m]	Limit [dBμV/m]	Delta [dB]
110.0	31.9	31.7	31.8	20	51.9	51.7	51.8	66.78	18.1

Calculated 300m:

Frequency [kHz]	L: PK [dBμV]	L: AV [dBμV]	L: QP [dBμV]	Correct. [dB]	L: PK [dBμV/m]	L: AV [dBμV/m]	L: QP [dBμV/m]	Limit [dBμV/m]	Delta [dB]
110.0	-8.1	-8.3	-8.2	20	11.9	11.7	11.8	26.78	18.1

Limit according to FCC Part 15 Subpart 15.209(a)

Frequency (MHz)	Field strength of fundamental wave		Measurement distance (meters)
	(μV/m)	dB (μV/m)	
0.009-0.490	2400/F(kHz)	--	300
0.490-1.705	24000/F (kHz)	--	30
1.705-30.0	30	29.5	30

The requirements are **FULFILLED**.

Remarks:

5.3 Spurious emissions (Magnetic field) 9 kHz – 30 MHz

For test instruments and accessories used see section 6 Part SER 1.

5.3.1 Description of the test location

Test location: OATS1

Test distance: 3 metres

5.3.2 Photo documentation of the test set-up



5.3.3 Description of Measurement

The spurious emissions from the EuT will be measured on an open area test site in the frequency range of 9 kHz to 30 MHz using a tuned receiver and a shielded loop antenna. The antenna was positioned 3, 10 or 30 meters horizontally from the EuT. Measurements have been made in all three orthogonal axes and the shielded loop antenna was rotated to locate the maximum of the emissions. In the case where larger measuring distances are required the results will extrapolated based on the values measured on the closer distances according to Section 15.31 (f) (2) [2]. The final measurement will be performed with an EMI Receiver set to Quasi Peak detector except for the frequency bands 9 kHz to 90 kHz and 110 to 490 kHz where an average detector will be used according to Section 15.209 (d) [2].

The final level, expressed in dB μ V/m, is arrived at by taking the reading from the EMI receiver (Level dB μ V) and adding the antenna correction factor and cable loss factor (Factor dB) to it. This result then has to be compared with the relevant FCC limit.

The resolution bandwidth during the measurement is as follows:

9 kHz – 150 kHz: ResBW: 200 Hz

150 kHz – 30 MHz: ResBW: 9 kHz

Example:

Frequency (MHz)	Level (dB μ V)	+	Factor (dB)	=	Level (dB μ V/m)	Limit (dB μ V/m)	=	Delta (dB)
1.705	5	+	20	=	25	30	=	5

5.3.4 Test result

Extract of the critical values:

Measured 3m:

Frequency [kHz]	L: PK [dBµV]	L: QP [dBµV]	L: AV [dBµV]	Correct. [dB]	L: PK [dBµV/m]	L: QP [dBµV/m]	L: AV [dBµV/m]	Limit [dBµV/m]	Delta [dB]
220.0	40.4	34.5	34.7	20	60.4	54.5	54.7	100.76	40.06
330.0	33.0	32.3	32.5	20	53.0	52.3	52.5	97.23	44.73
440.0	20.4	19.4	19.6	20	40.4	39.4	39.6	94.74	55.14
660.0	16.7	15.4	15.5	20	36.7	35.4	35.5	71.21	35.71
880.0	14.1	12.6	12.4	20	34.1	32.6	32.4	68.71	36.31
990.0	10.0	8.5	8.3	20	30.0	28.5	28.3	67.69	39.39
1100.0	12.6	9.9	9.8	20	32.6	29.9	29.8	66.78	36.98
1210.0	5.4	2.6	2.1	20	25.4	22.6	22.1	65.95	43.85

Calculated 30m:

Frequency [kHz]	L: PK [dBµV]	L: QP [dBµV]	L: AV [dBµV]	Correct. [dB]	L: PK [dBµV/m]	L: AV [dBµV/m]	L: AV [dBµV/m]	Limit [dBµV/m]	Delta [dB]
220.0	0.4	-5.5	-5.3	20	20.4	14.5	14.7	60.76	40.06
330.0	-7.0	-7.7	-7.5	20	13.0	12.3	12.5	57.23	44.73
440.0	-19.6	-20.6	-20.4	20	0.4	-0.6	-0.4	54.74	55.14
660.0	-23.3	-24.6	-24.5	20	-3.3	-4.6	-4.5	31.21	35.71

Calculated 300m:

Frequency [kHz]	L: PK [dBµV]	L: QP [dBµV]	L: AV [dBµV]	Correct. [dB]	L: PK [dBµV/m]	L: QP [dBµV/m]	L: AV [dBµV/m]	Limit [dBµV/m]	Delta [dB]
220.0	-39.6	-35.5	-45.3	20	-19.6	-15.5	-25.3	20.76	40.06
330.0	-47.0	-47.7	-47.5	20	-27.0	-27.7	-27.5	17.23	44.73
440.0	-59.6	-60.6	-60.4	20	-39.6	-40.6	-40.4	14.74	55.14

Limit according to FCC Part 15 Subpart 15.209(a)

Frequency (MHz)	Field strength of spurious emissions		Measurement distance (meters)
	(µV/m)	dB (µV/m)	
0.009-0.490	2400/F(kHz)	--	300
0.490-1.705	24000/F (kHz)	--	30
1.705-30.0	30	29.5	30

The requirements are **FULFILLED**.

Remarks:

5.4 Radiated emissions (electric field) 30 MHz – 1 GHz

For test instruments and accessories used see section 6 Part SER 2.

5.4.1 Description of the test location

Test location: OATS1

Test distance: 3 metres

5.4.2 Photo documentation of the test set-up



5.4.3 Description of Measurement

Spurious emissions from the EuT are measured in the frequency range of 30 MHz to 1000 MHz using a tuned receiver and appropriate broadband linearly polarized antennas. Measurements between 30 MHz and 1000 MHz are made with 120 kHz/6 dB bandwidth and quasi-peak detection. Table top equipment is placed on a 1.0 X 1.5 meter non-conducting table 80 centimetres above the ground plane. Floor standing equipment is placed directly on the turntable/ground plane. The set up of the Equipment under test will be in accordance to ANSI C63.4-2003. The Interface cables that are closer than 40 centimetres to the ground plane are bundled in the center in a serpentine fashion so they are at least 40 centimetres from the ground plane. Cables to simulators/testers (if used in this test) are routed through the center of the table and to a screen room located outside the test area. The antenna was positioned 3, 10 or 30 meters horizontally from the EuT. To locate maximum emissions from the test sample the antenna is varied in height from 1 to 4 meters, measurement scans are made with both horizontal and vertical antenna polarization's and the EuT are rotated 360 degrees.

The final level, expressed in dB μ V/m, is arrived by taking the reading from the EMI receiver (Level dB μ V) and adding the correction factors and cable loss factor (Factor dB) to it. This is done automatically in the EMI receiver, where the correction factors are stored. This result then has the FCC or CISPR limit subtracted from it to provide the Delta which gives the tabular data as shown in the data sheets at page.

FCC ID:NDX-RPO7470

The resolution bandwidth during the measurement is as follows:
30 MHz – 1000 MHz: ResBW: 120 kHz

Example:

Frequency (MHz)	Level (dBμV)	+	Factor (dB)	=	Level (dBμV/m)	Limit (dBμV/m)	=	Delta (dB)
719	75	+	32.6	=	107.6	110	=	-2.4

5.4.4 Test result

Extract of the critical values:

Frequency [MHz]	Reading Vert. [dBμV]	Reading Hor. [dBμV]	Correct. Vert. [dB]	Correct. Hor. [dB]	Level Vert. [dBμV/m]	Level Hor. [dBμV/m]	Limit [dBμV/m]	Dlimit [dB]
30 - 1000					< 20	< 20	40,0	> 20

Limit according to FCC Part 15 Subpart 15.209(a)

Frequency (MHz)	Field strength of spurious emissions		Measurement distance (meters)
	(μV/m)	dB (μV/m)	
30-88	100	40	3
88-216	150	43.5	3
216-960	200	46	3
Above 960	500	54	3

The requirements are **FULFILLED**.

Remarks:

5.5 Emission Bandwidth

For test instruments and accessories used see section 6 Part MB.

5.5.1 Description of the test location

Test location: AREA4

5.5.2 Photo documentation of the test set-up



5.5.3 Description of Measurement

The bandwidth is measured at an amplitude level reduced from the reference level by a specified ratio of -20 dB. The reference level is the level of the highest amplitude signal observed from the transmitter at either the fundamental frequency or the first-order modulation products in all typical modes of operation, including the unmodulated carrier, even if atypical.

The resolution bandwidth of measuring instrument was set to a value as shown in the following table below according to ANSI C63.4-2003.

Fundamental frequency	Minimum resolution bandwidth
9 kHz to 30 MHz	1kHz
30 to 1000 MHz	10 kHz
1000 MHz to 40 GHz	100 kHz

5.5.4 Test result

Fundamental [kHz] See Plot 1	20dB Bandwidth F1	20dB Bandwidth F2	Measured Bandwidth [kHz]
109.885	108.535	111.205	2.67

5.5.5 Test protocol

Emission Bandwidth plots



*RBW 1 kHz

Marker 1 [T1]

*VBW 1 kHz

130.18 dBμV

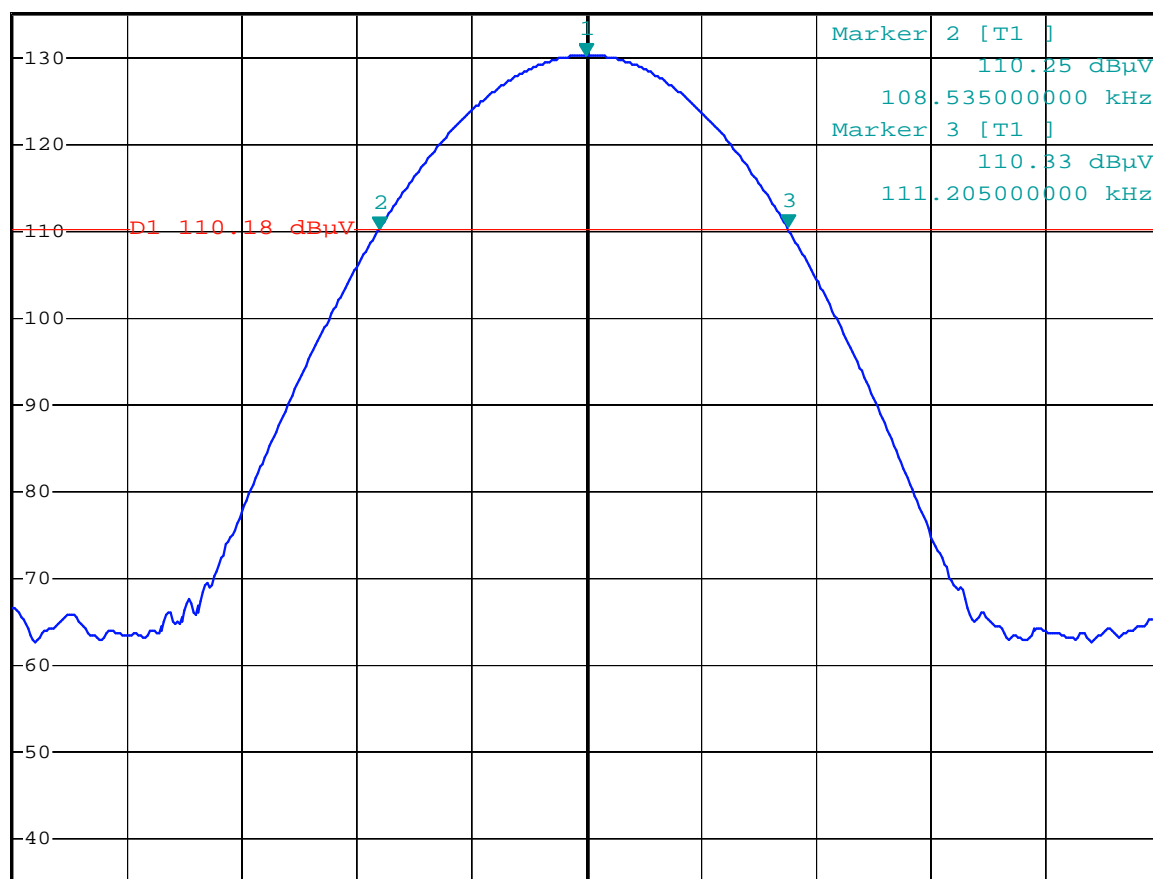
Ref 135 dBμV

Att 60 dB

SWT 20 ms

109.885000000 kHz

1 PK
VIEW



Center 109.885 kHz

750 Hz/

Span 7.5 kHz

6 USED TEST EQUIPMENT AND ACCESSORIES

All test instruments used, in addition to the test accessories, are calibrated and verified regularly.

The calibration intervals and the calibration history will be given out on request.

Test Report No: T32619-00-03HU
Beginning of Testing: 27 Mai 2008
End of Testing: 04 Juni 2008

Test ID	Model Type	Kind of Equipment	Manufacturer	Equipment No.
A 4	ESHS 30	EMI Test Receiver	Rohde & Schwarz München	02-02/03-05-002
	NNLK 8129	LISN	Schwarzbeck Mess-Elektron	02-02/20-05-001
	ESH 2 - Z 5	LISN	Rohde & Schwarz München	02-02/20-05-004
	N-4000-BNC	RF Cable	mikes-testingpartners gmbh	02-02/50-05-138
	N-1500-N	RF Cable	mikes-testingpartners gmbh	02-02/50-05-140
	ESH 3 - Z 2	Pulse Limiter	Rohde & Schwarz München	02-02/50-05-155
	SP 103 /3.5-60	Convertor 220V / 110V	mikes-testingpartners gmbh	02-02/50-05-182
CPR 1	FMZB 1516	Magnetic Field Antenna	Schwarzbeck Mess-Elektron	01-02/24-01-018
	ESCI	EMI Test Receiver	Rohde & Schwarz München	02-02/03-05-004
	S10162-B	RF Cable 33m	Huber + Suhner	02-02/50-05-031
	KK-EF393-21N-16	RF Cable 20m	Huber + Suhner	02-02/50-05-033
	NW-2000-NB	RF Cable	Huber + Suhner	02-02/50-05-113
MB	FSP 30	Spectrum Analyzer	Rohde & Schwarz München	02-02/11-05-001
	THS730A	Handheld Scope	Tektronix GmbH	02-02/13-05-001
	HZ-10	Magnetic Field Antenna	Rohde & Schwarz München	02-02/24-05-012
	WK-340/40	Climatic Chamber	Weiss Umwelttechnik GmbH	02-02/45-05-001
	6543A	Power Supply	HP Hewlett-Packard	02-02/50-05-157
SER 1	FMZB 1516	Magnetic Field Antenna	Schwarzbeck Mess-Elektron	01-02/24-01-018
	ESCI	EMI Test Receiver	Rohde & Schwarz München	02-02/03-05-004
	S10162-B	RF Cable 33m	Huber + Suhner	02-02/50-05-031
	KK-EF393-21N-16	RF Cable 20m	Huber + Suhner	02-02/50-05-033
	NW-2000-NB	RF Cable	Huber + Suhner	02-02/50-05-113
SER 2	ESVS 30	EMI Test Receiver	Rohde & Schwarz München	02-02/03-05-006
	VULB 9168	Trilog-Broadband Anten	Schwarzbeck Mess-Elektron	02-02/24-05-005
	S10162-B	RF Cable 33m	Huber + Suhner	02-02/50-05-031
	KK-EF393-21N-16	RF Cable 20m	Huber + Suhner	02-02/50-05-033
	NW-2000-NB	RF Cable	Huber + Suhner	02-02/50-05-113

FCC ID:NDX-RP07470

Test Report No: T32619-00-03HU
Beginning of Testing: 27 Mai 2008
End of Testing: 04 Juni 2008

Equipment No.	Next Calib.	Last Calib.	Next Verif.	Last Verif.
A 4				
02-02/03-05-002	04/30/2009	04/30/2008		
02-02/20-05-001	12/09/2008	06/09/2008		
02-02/20-05-004	03/13/2011	03/13/2008	09/13/2008	03/13/2008
02-02/50-05-138				
02-02/50-05-140				
02-02/50-05-155	09/25/2008	03/25/2008		
02-02/50-05-182				
CPR 1				
01-02/24-01-018	02/20/2009	02/20/2008		
02-02/03-05-004	01/08/2009	01/08/2008		
02-02/50-05-031				
02-02/50-05-033				
02-02/50-05-113				
MB				
02-02/11-05-001	04/08/2009	04/08/2008		
02-02/13-05-001	09/03/2008	09/03/2007		
02-02/24-05-012				
02-02/45-05-001	09/01/2008	09/01/2005	06/13/2008	06/07/2008
02-02/50-05-157				
SER 1				
01-02/24-01-018	02/20/2009	02/20/2008		
02-02/03-05-004	01/08/2009	01/08/2008		
02-02/50-05-031				
02-02/50-05-033				
02-02/50-05-113				
SER 2				
02-02/03-05-006	07/24/2008	07/24/2007		
02-02/24-05-005	05/06/2011	05/06/2008	08/21/2008	02/21/2008
02-02/50-05-031				
02-02/50-05-033				
02-02/50-05-113				