

Customized

# Application Result

<b>Customer</b>	<b>SEWOO Tech</b>
<b>Order</b>	<b>Set matching</b>
<b>Model No.</b>	<b>LK-P11</b>
<b>APP. Type</b>	<b>Mini Printer</b>
<b>Antenna</b>	<b>ALA931C5</b>

**1<sup>st</sup> Report**

**April 22, 2008**

	<b>WRITTEN</b>	<b>CHECKED</b>	<b>APPROVED</b>
<b>AMOTECH</b>			

<p>AMOTECH CO., LTD. Microwave Research &amp; Development Laboratory Contact : Cho Jin-Sang : <a href="mailto:meore2006@amotech.co.kr">meore2006@amotech.co.kr</a></p>
--

**Notes**

The contents of this data sheet are subject to change without notice.

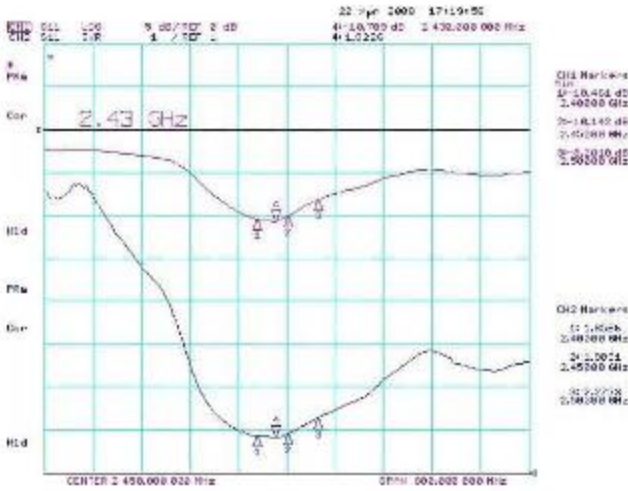
Please confirm the layout on the PCB and the SET conditions when placing your order.



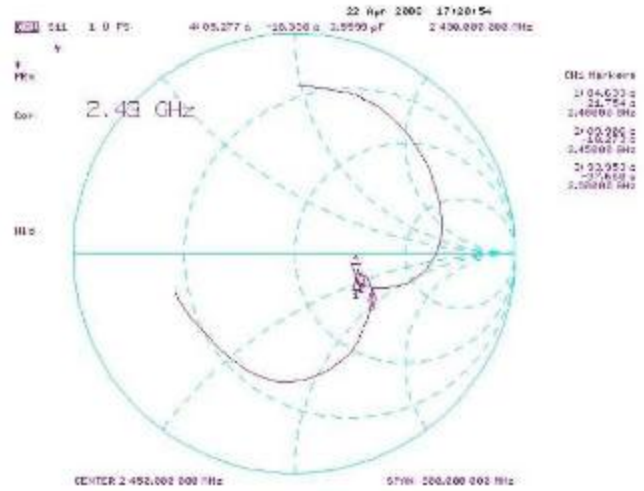
### 1. [Step #1-1] ALA931C5

- Condition: Set
- Matching value: Series C = 1.8pF, shunt L = 6.8nH

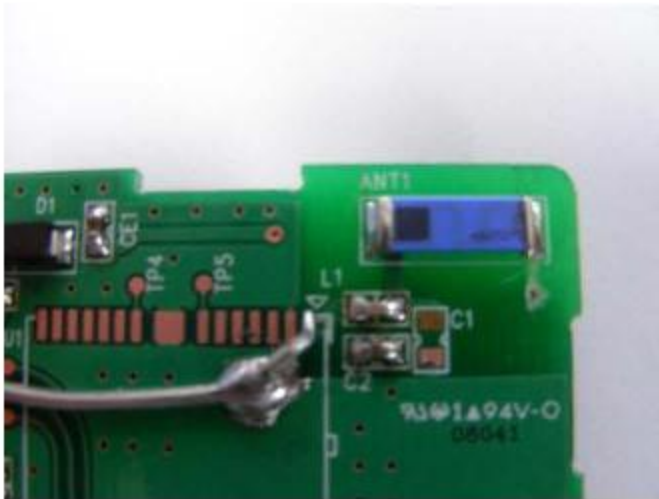
#### 1) S11



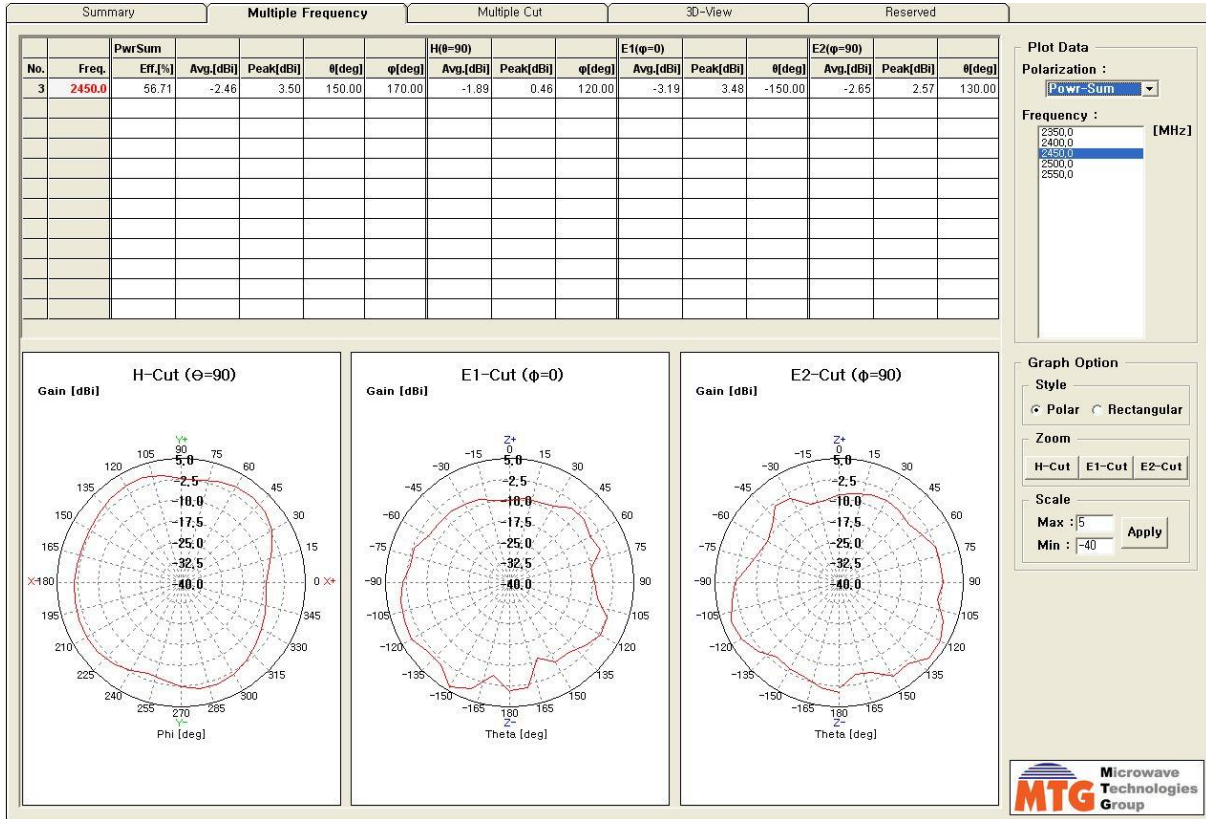
#### 2) Smithchart



#### 3) Layout (ALA931C5)



# Radiation Pattern\_2D



# Radiation Pattern\_3D

