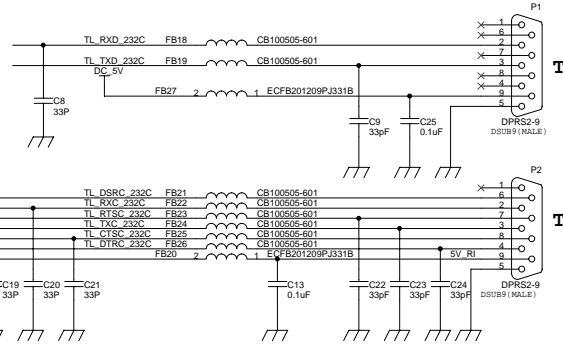
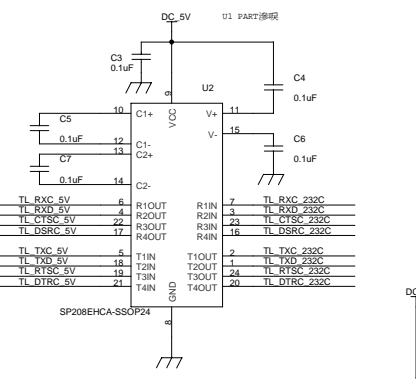
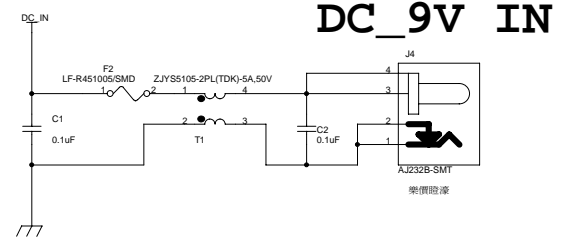
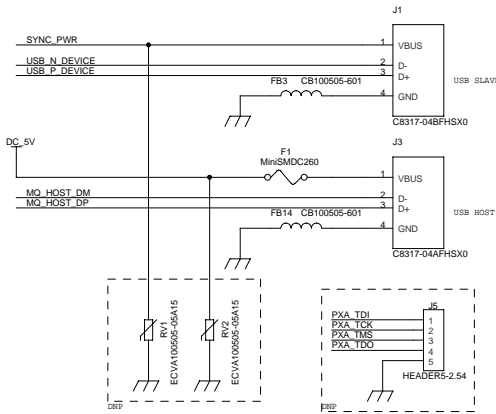
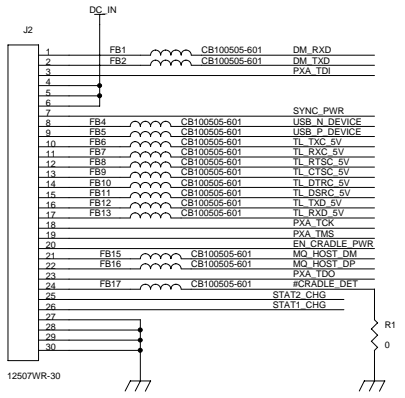


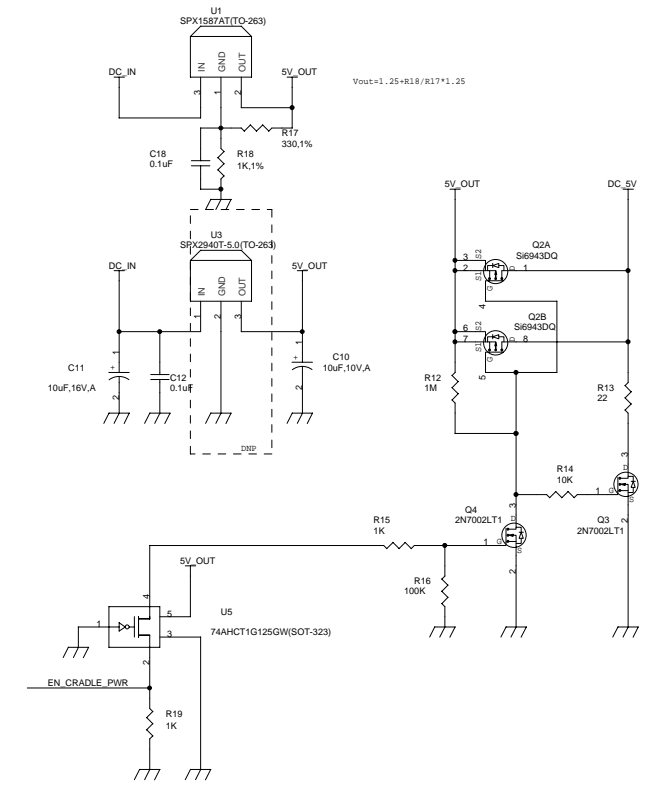
DC IN PATTERN 贏興 掃咩

CONFIDENTIAL

<Do Not Copy>

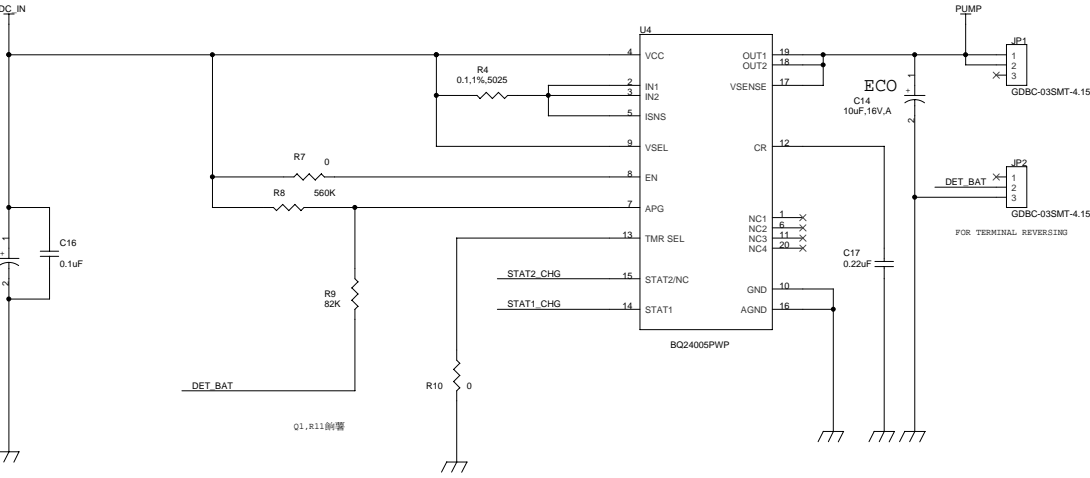


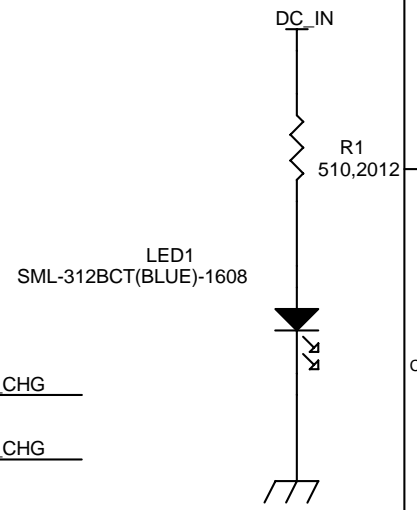
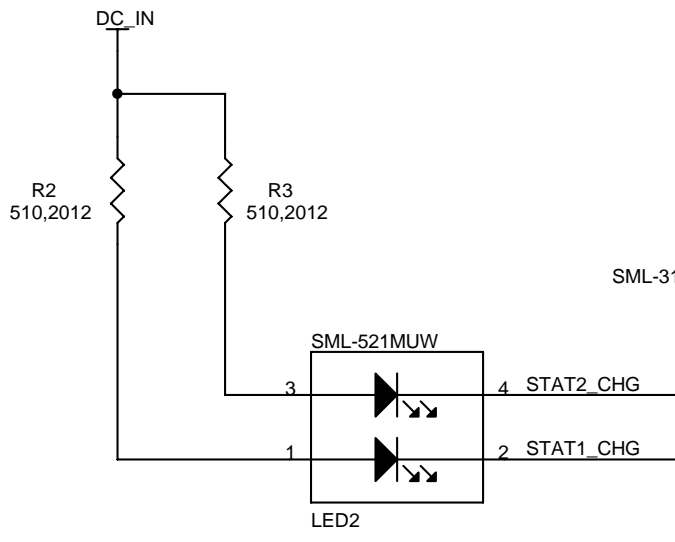
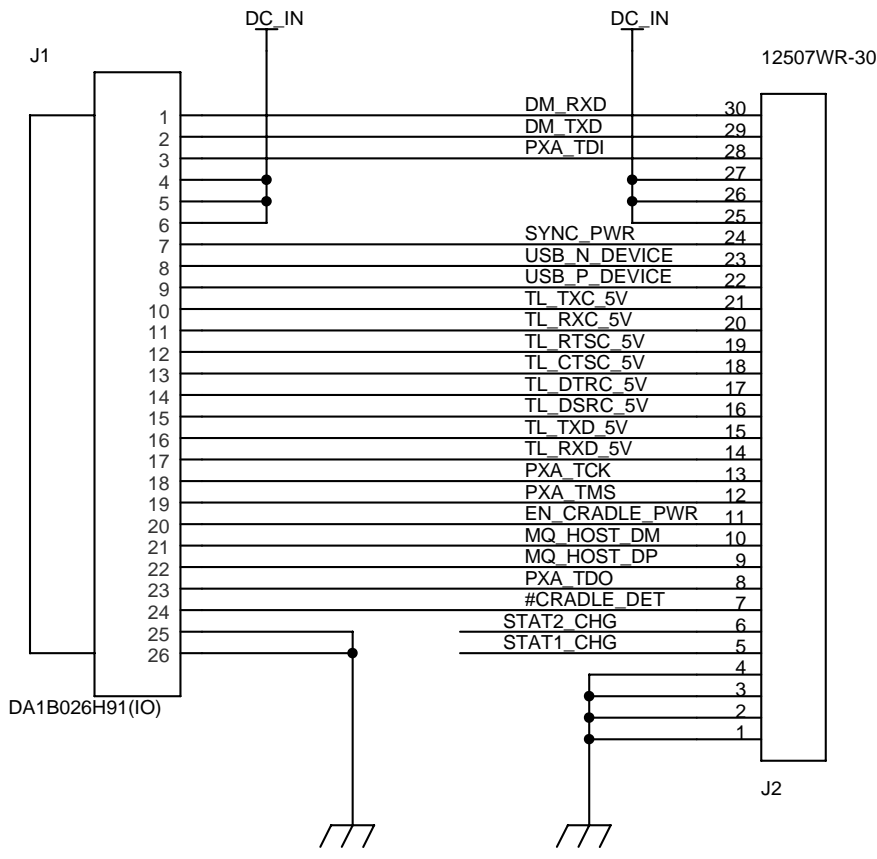
TO TERMINAL
TO SCANNER



LED Status

CHARGE STATUS	BQ24007 Single Color	BQ24008 Bi-Color
Precharge	RED	RED
Fast Charge	RED	RED
Fault	BLINKING	YELLOW
Charge Complete (>90%)	OFF	GREEN
Sleep Mode	OFF	OFF
APG/Therm Invald	OFF	OFF
Thermal Shutdown	OFF	OFF
Battery Absent	OFF	OFF





Title		
<Title>		
Size	Document Number	Rev
A	<Doc>	<RevCode>
Date:	Monday, March 07, 2005	Sheet 1 of 1

BULVERDE_CDMA_VER0

TABLE OF CONTENTS MAY INCLUDE:

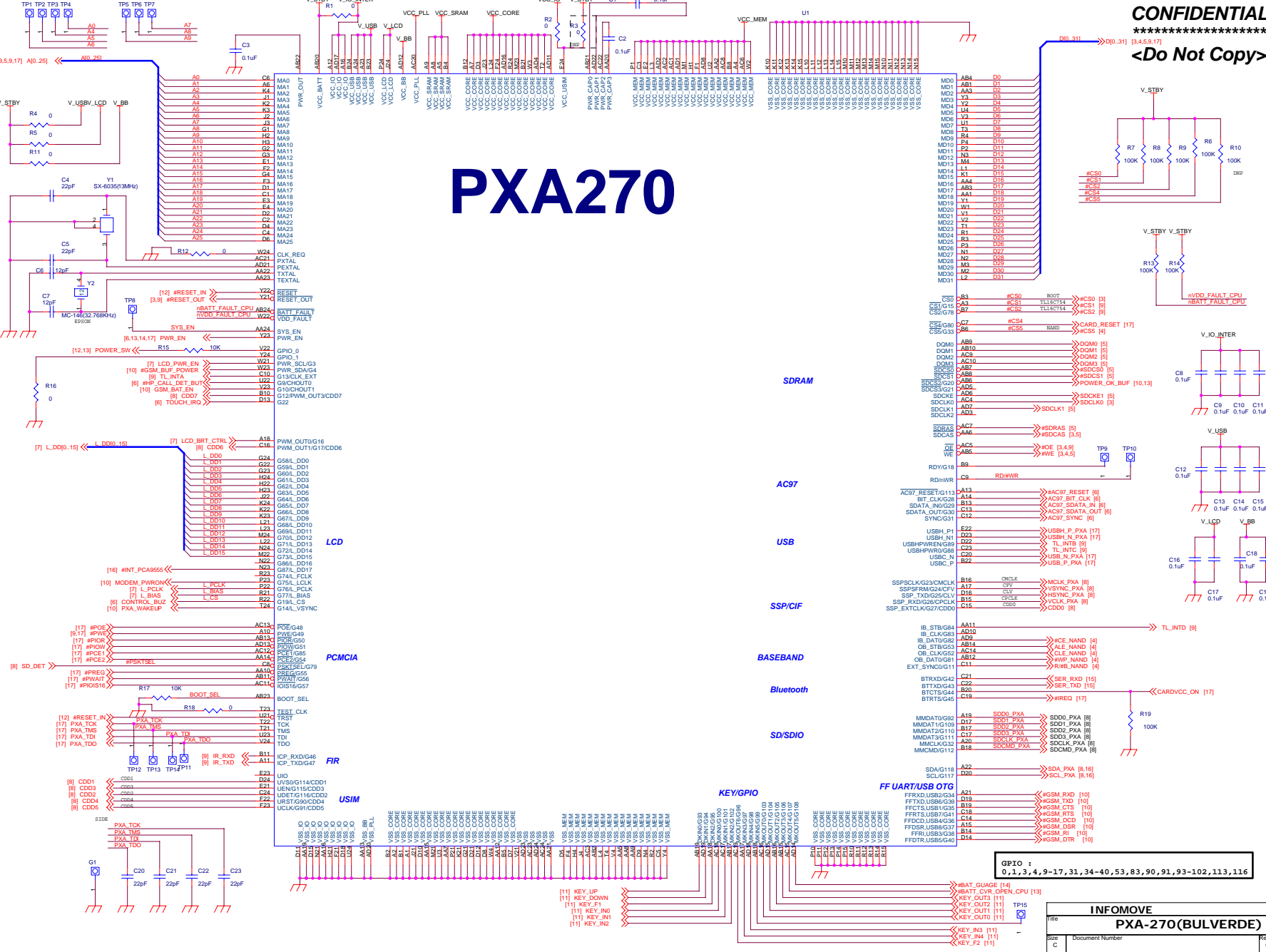
P01	COVER PAGE
P02	CPU(PXA-270)
P03	FLASH
P04	SDRAM
P05	NAND
P06	TFT-LCD
P07	CODEC
P08	CAMERA & SDCARD
P09	IRDA&UART
P10	TRS
P11	BUTTON
P12	POWER SW & RESET & STATUS LED
P13	MAIN POWER
P14	CHARGE & VBATT_TRS & VCC_IO
P15	IO_INTERFACE
P16	PCA9555
P17	CRADLE & USB & LAN EXP

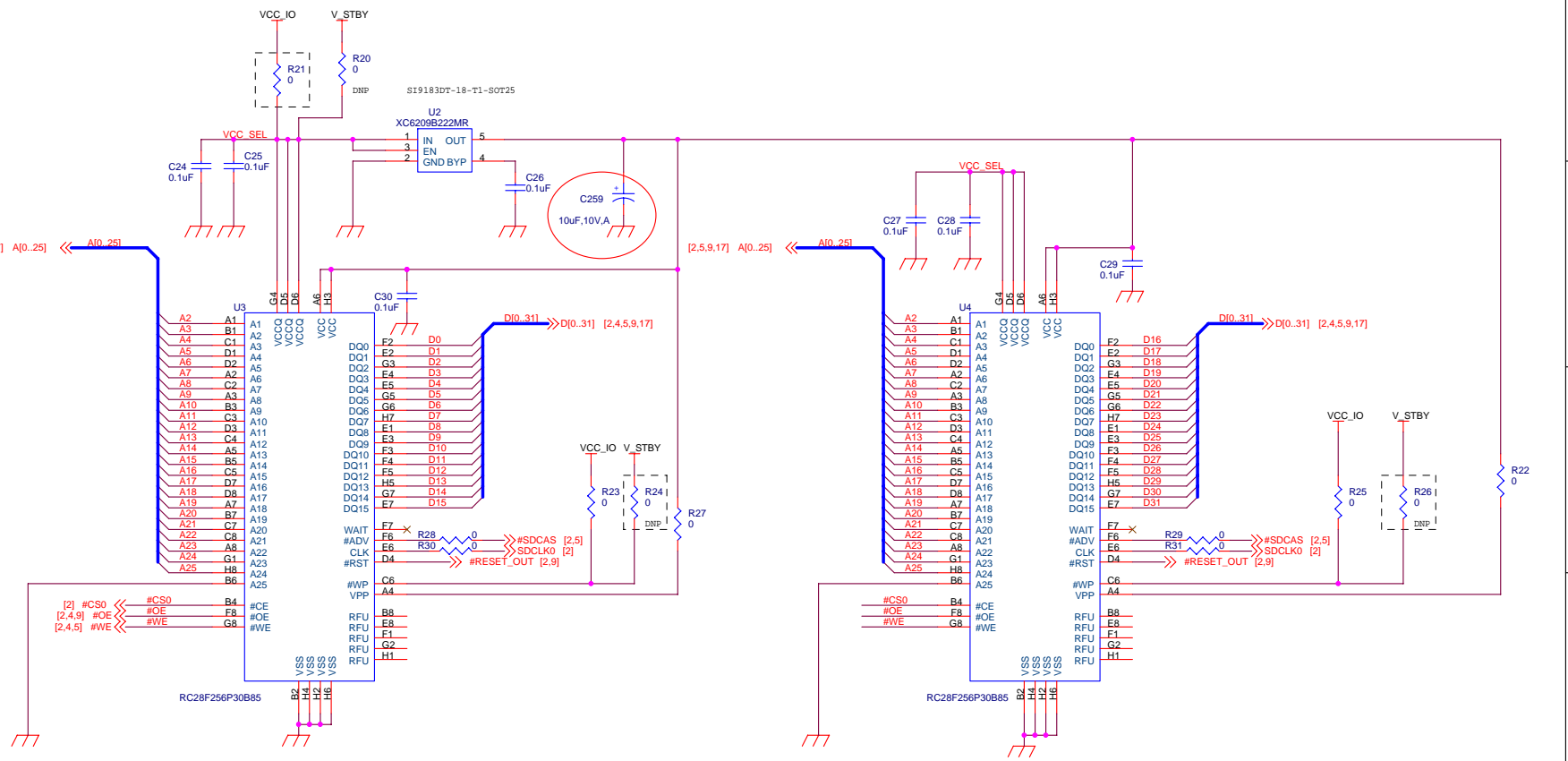
RELEASE :JUL 5, 2006

INFOMOVE

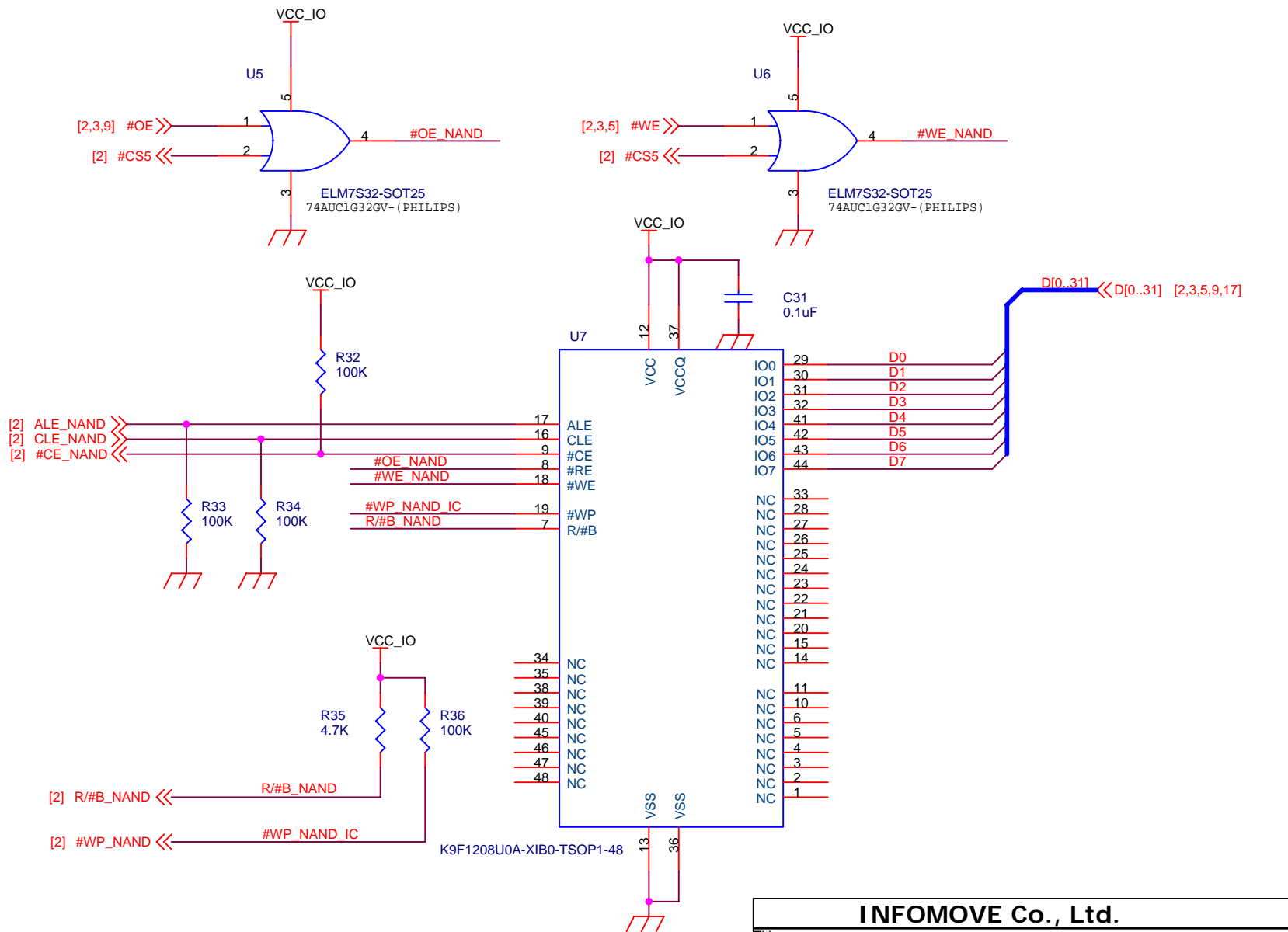
INFOMOVE		
COVER SHEET		
Title		
Size	Document Number	Rev
C	XEN-SCH-WPDA-T0	0.43
Date:	Tuesday, September 12, 2006	Sheet 1 of 17

PXA270

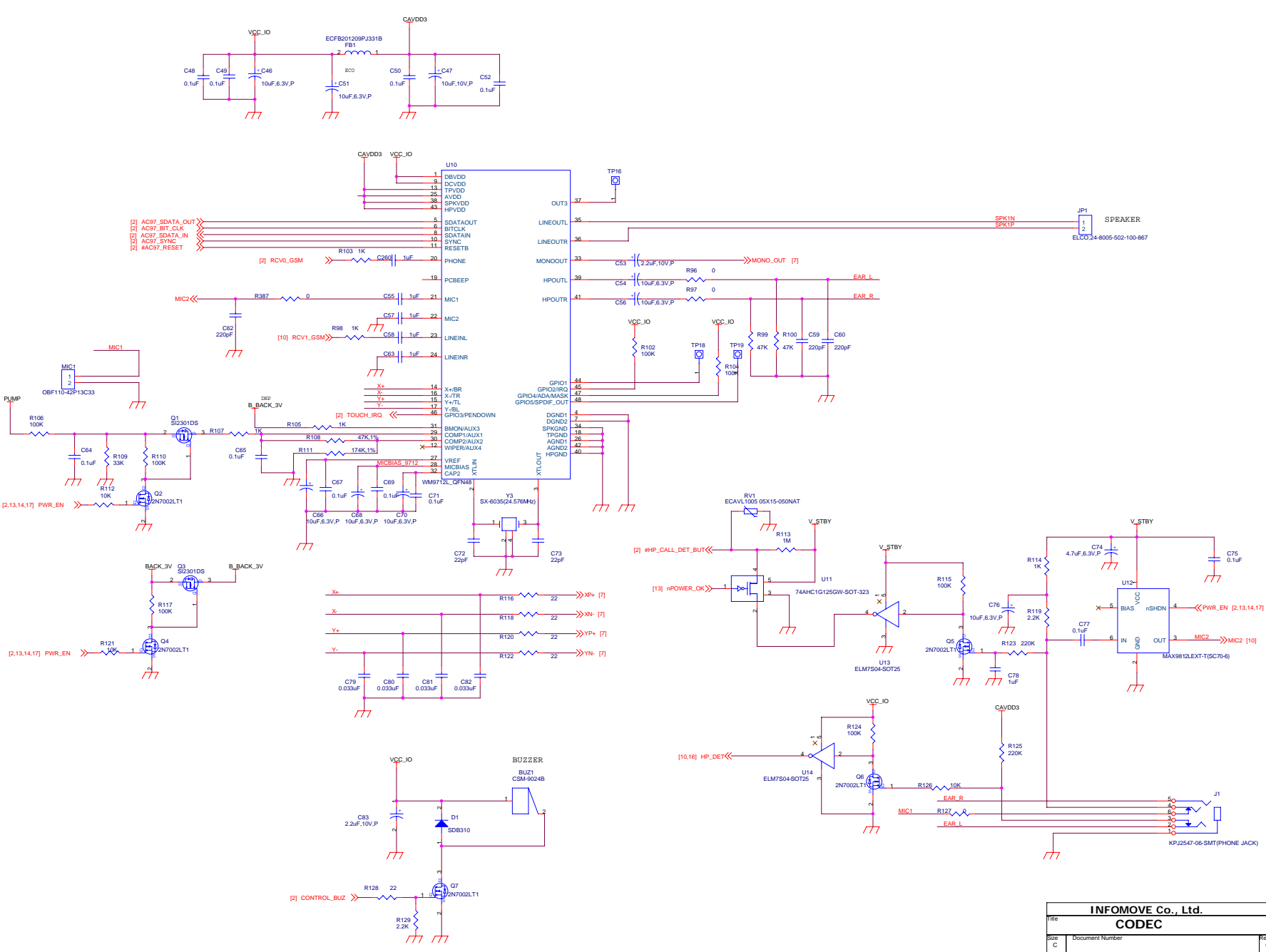




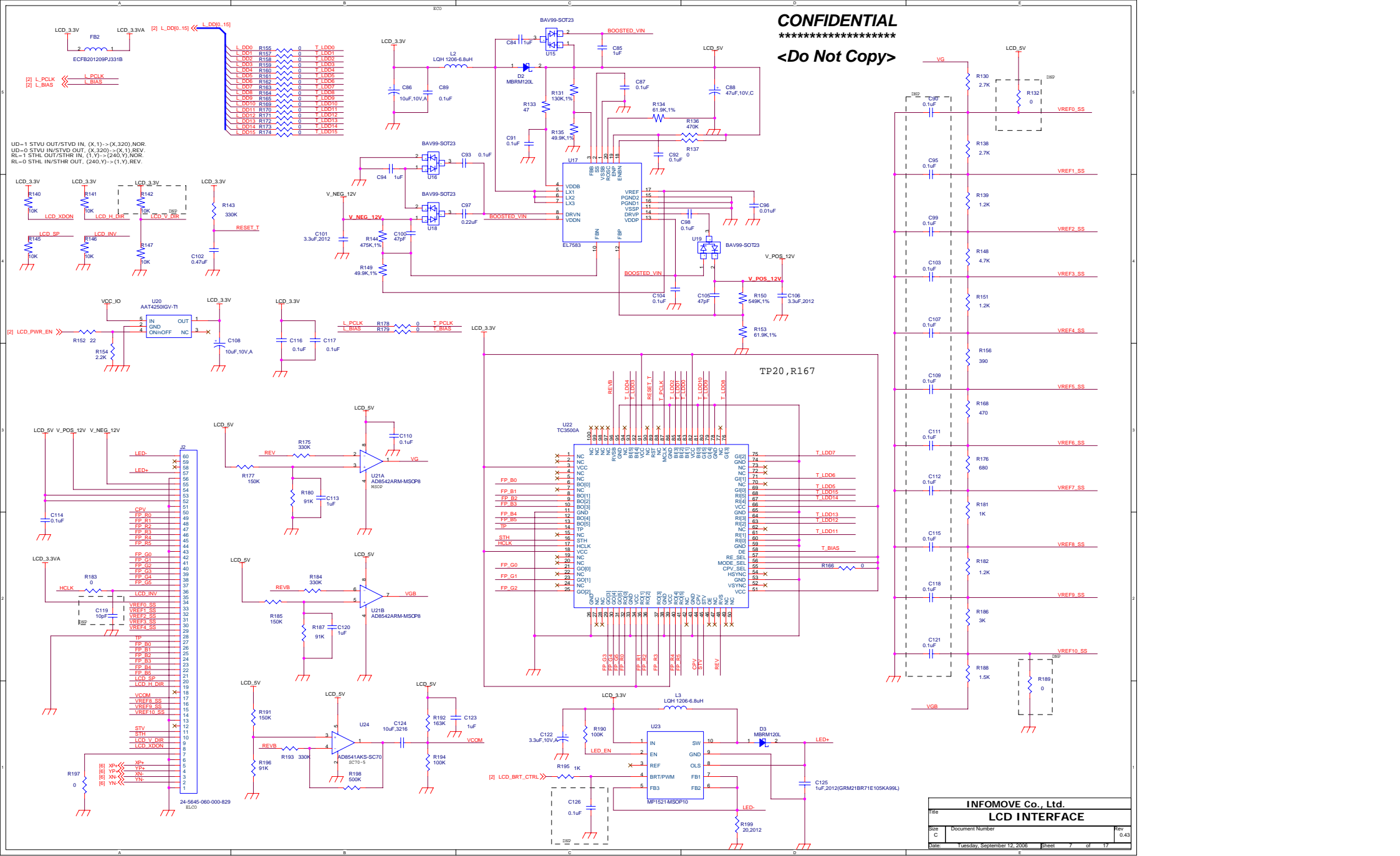
INFOMOVE Co., Ltd.		
FLASH		
Title		
Size	Document Number	Rev
B		0.43
Date:	Tuesday, September 12, 2006	Sheet 3 of 17



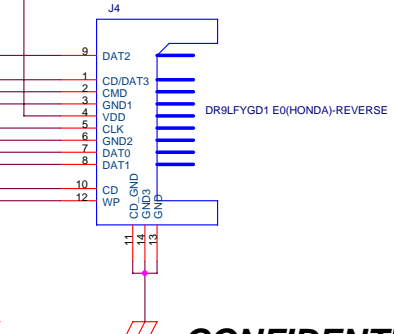
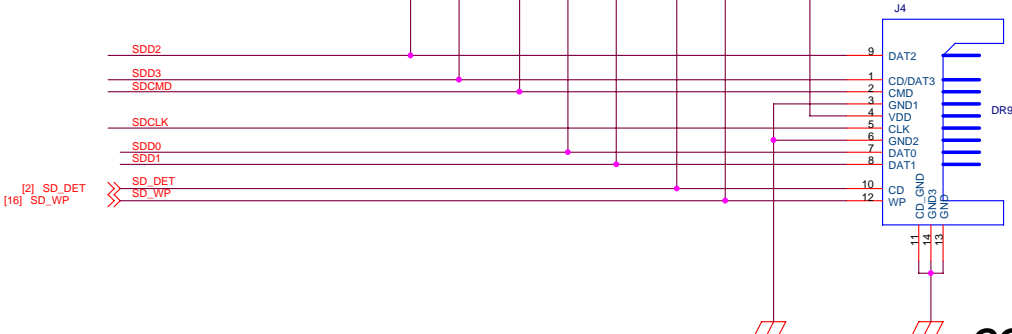
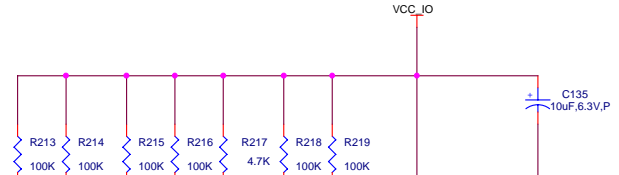
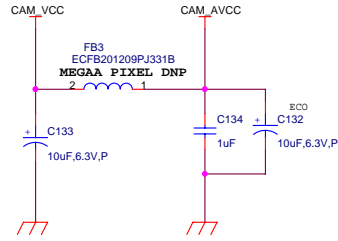
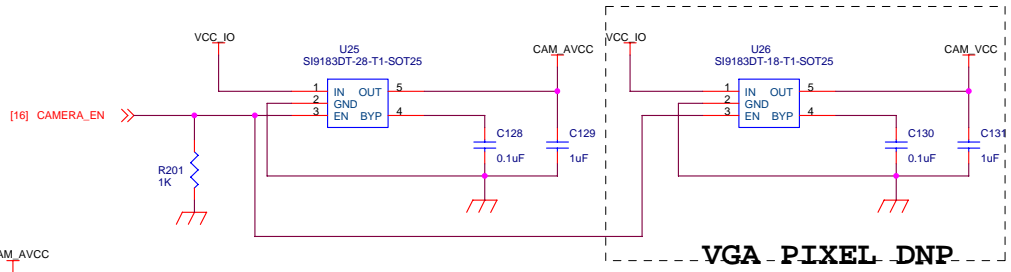
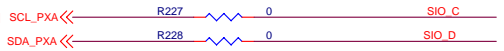
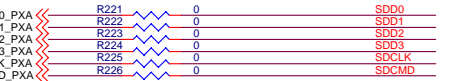
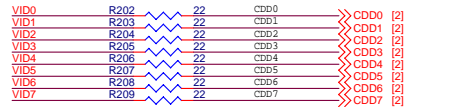
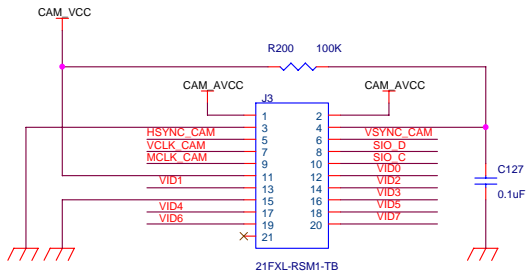
INFOMOVE Co., Ltd.		
NAND		
Title		
Size A	Document Number	Rev 0.43
Date:	Tuesday, September 12, 2006	Sheet 4 of 17



INFOMOVE Co., Ltd.		
CODEC		
Title	Document Number	Rev
C		0.43
Date	Tuesday, September 12, 2006	Sheet 6 of 17



INFOMOVE Co., Ltd.		
LCD INTERFACE		
Title	Document Number	Rev
C		0.43
Date	Tuesday, September 12, 2006	Sheet 7 of 17



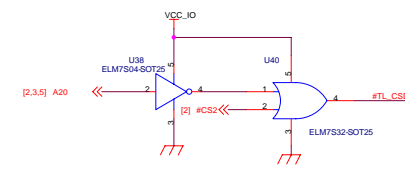
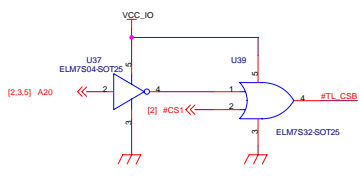
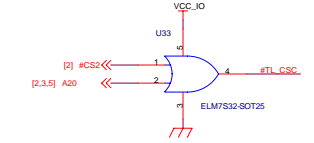
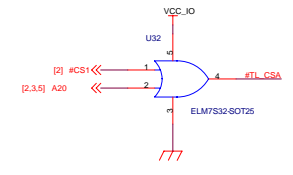
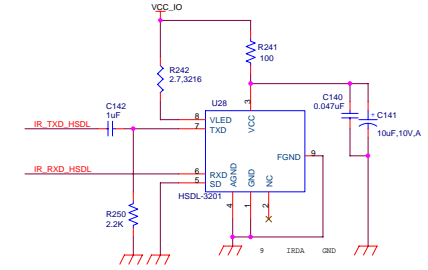
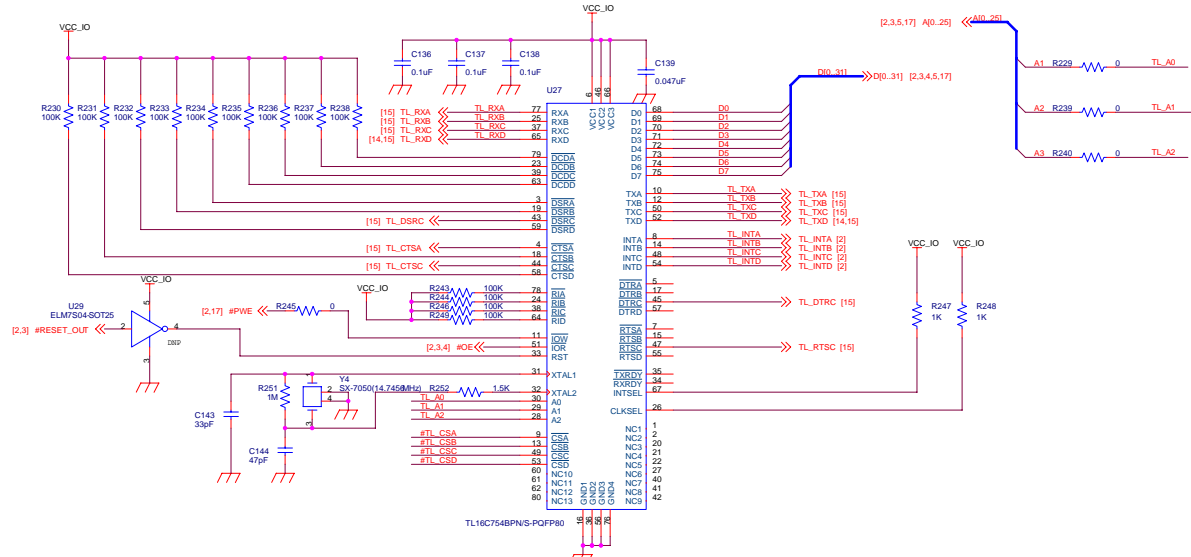
CONFIDENTIAL

 <Do Not Copy>

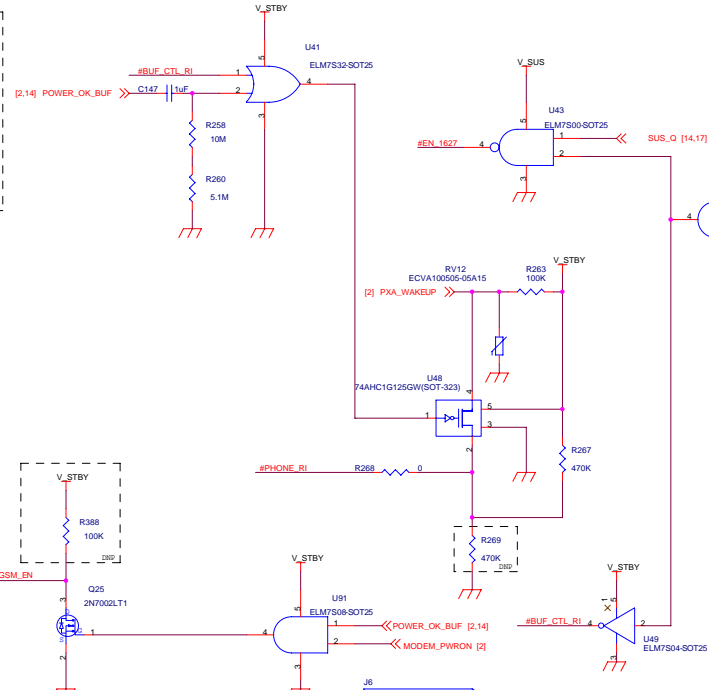
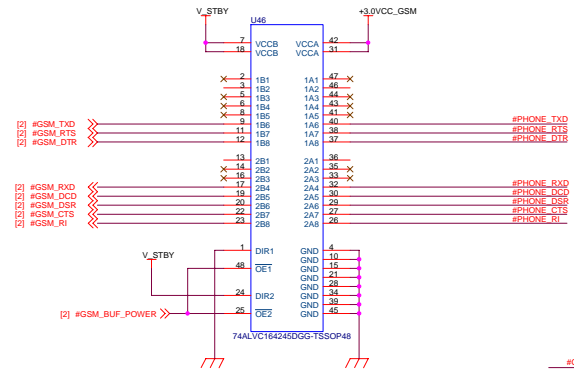
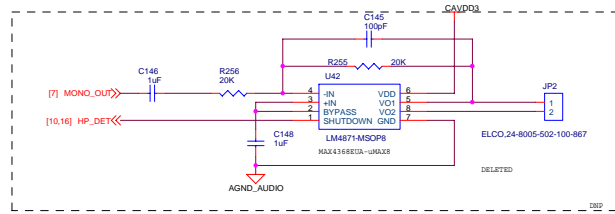
INFOMOVE Co., Ltd.		
Title CAM&SD		
Size B	Document Number	Rev 0.43
Date:	Tuesday, September 12, 2006	Sheet 8 of 17

CONFIDENTIAL

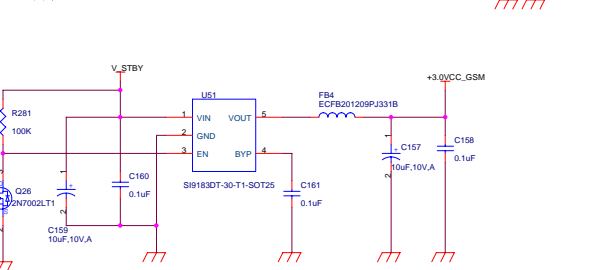
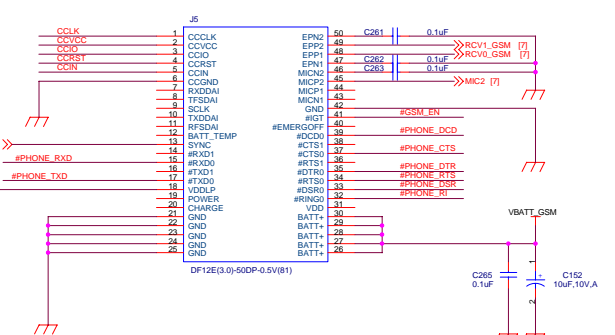
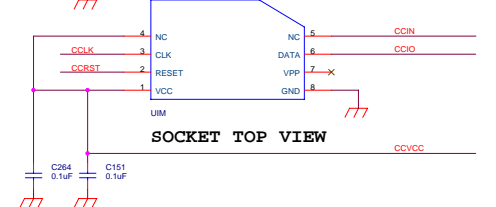
<Do Not Copy>



INFOMOVE		
Title	IRDA&UART	
Size	Document Number	Rev
C		0.43
Date	Tuesday, September 12, 2006	Sheet 9 of 17

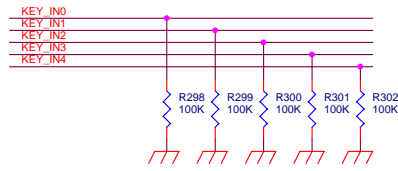
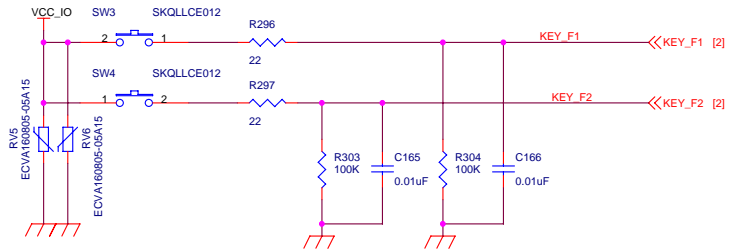
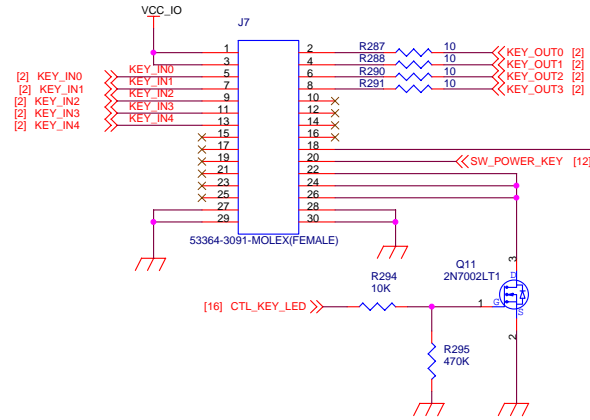
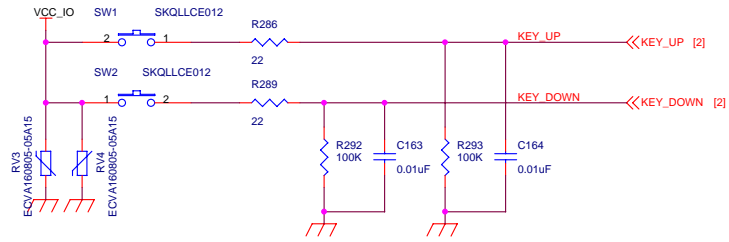


SOCKET TOP VIEW



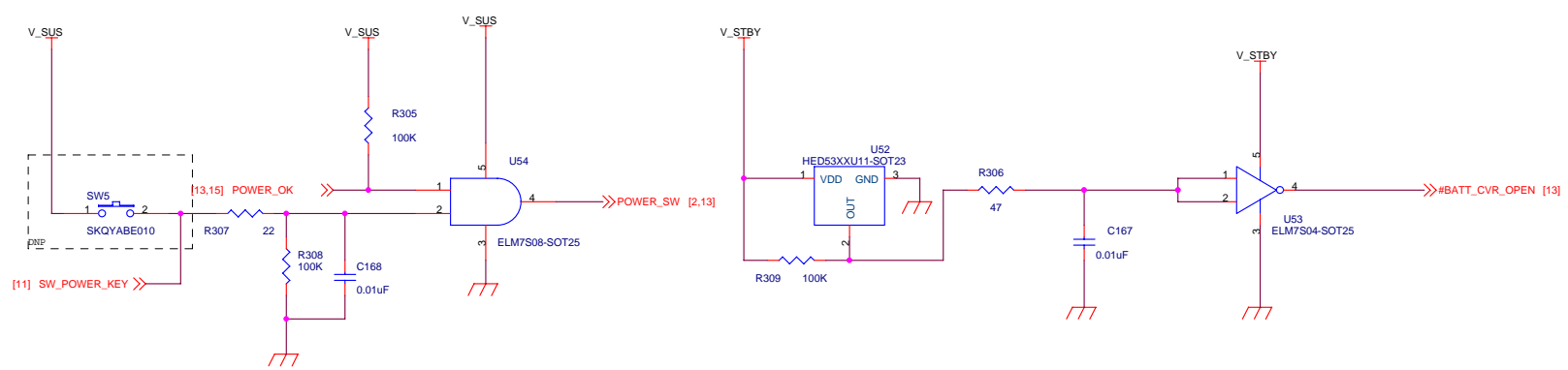
VO=R397/R398*1.3+1

INFOMOVE		
CDMA		
File		
Size	Document Number	Rev
C	NEN-SCM-NPDA-TD	0.43
Date	Tuesday, September 12, 2006	Sheet 10 of 17

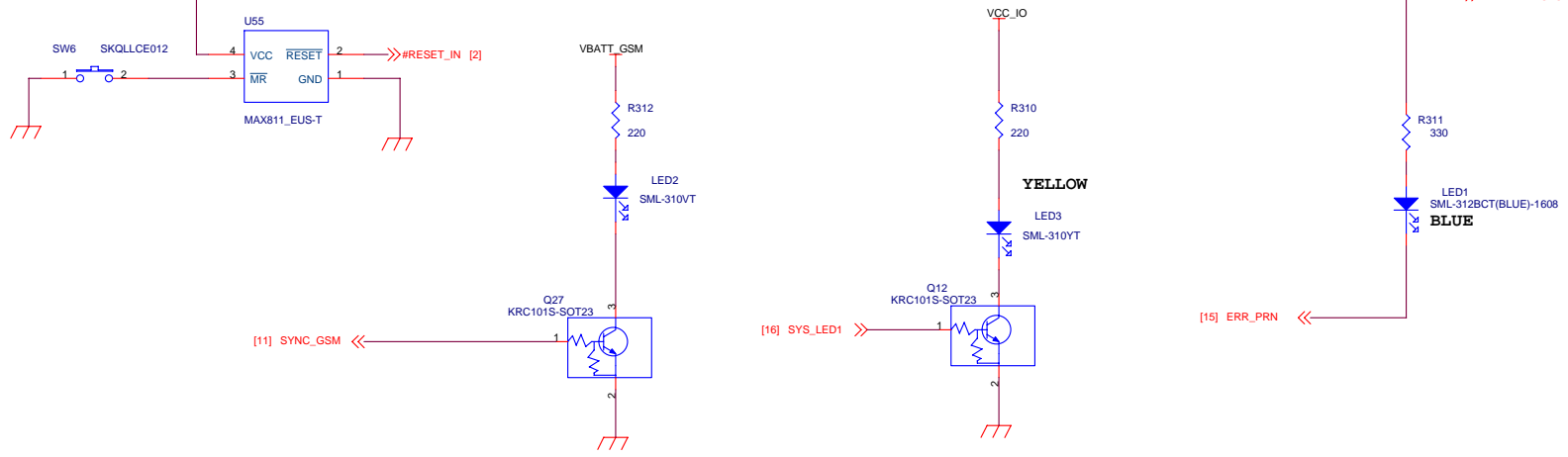


INFOMOVE		
Title		
BUTTON		
Size	Document Number	Rev
B		0.43
Date:	Tuesday, September 12, 2006	Sheet 11 of 17

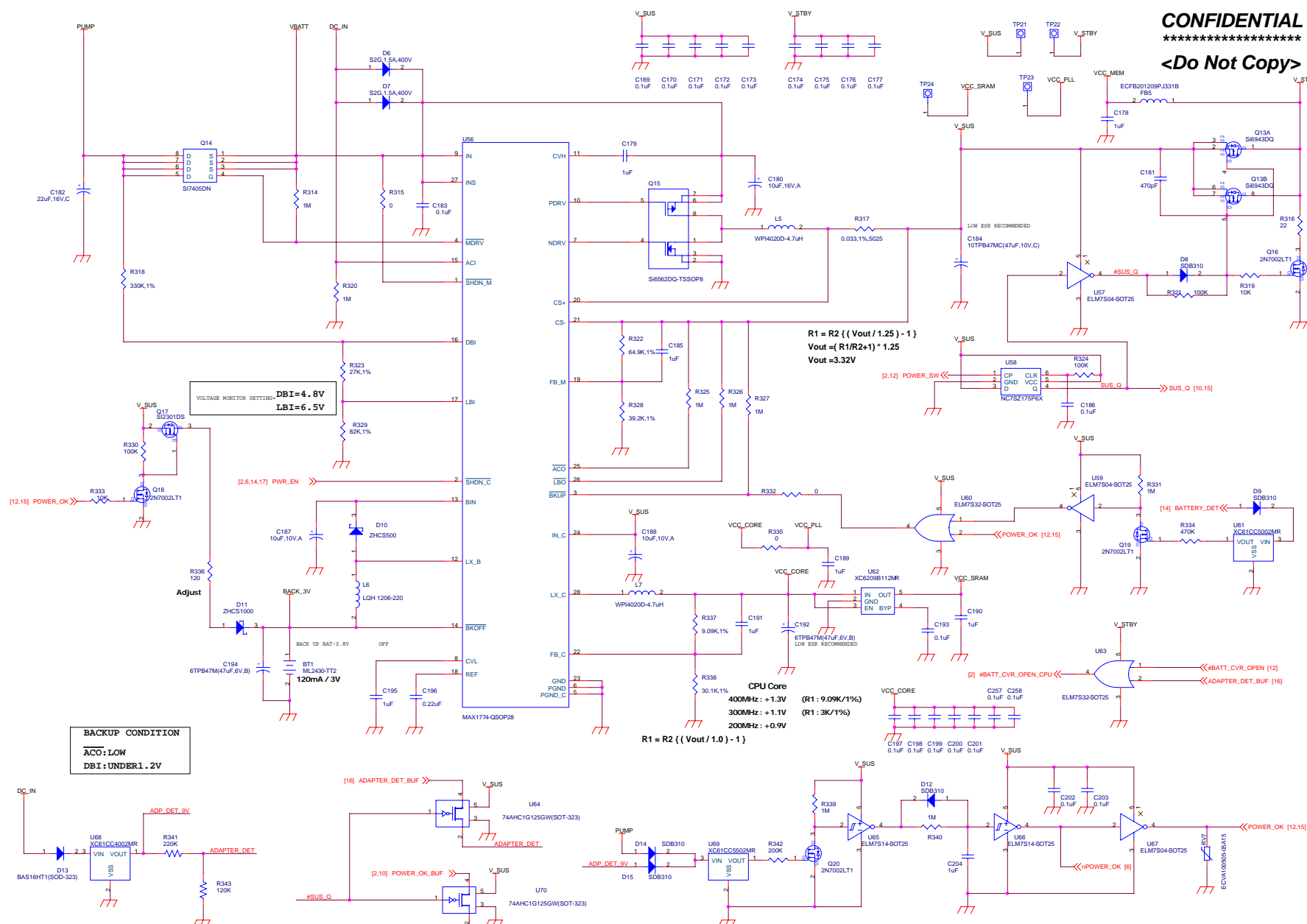
POWER ON/OFF



RESET S/W



INFOMOVE		
STATUS		
Title		
Size	Document Number	Rev
B		0.43
Date:	Tuesday, September 12, 2006	Sheet 12 of 17



$$R1 = R2 \left\{ \left(\frac{V_{out}}{1.25} \right) - 1 \right\}$$

$$V_{out} = \left(\frac{R1}{R2+1} \right) * 1.25$$

$$V_{out} = 3.32V$$

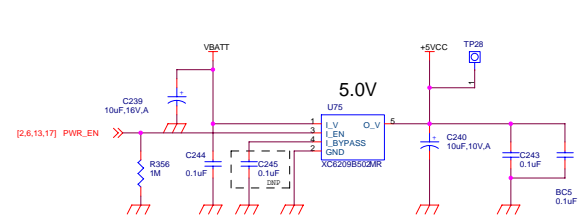
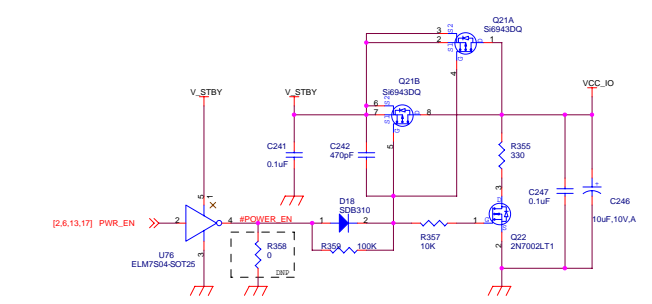
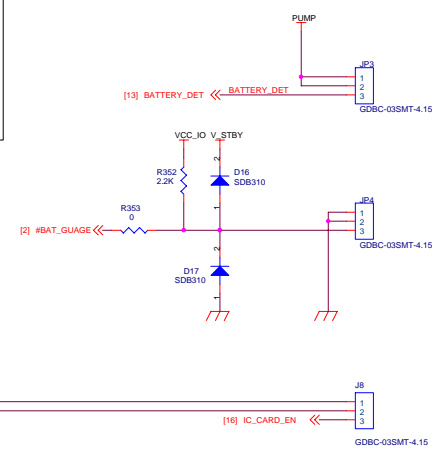
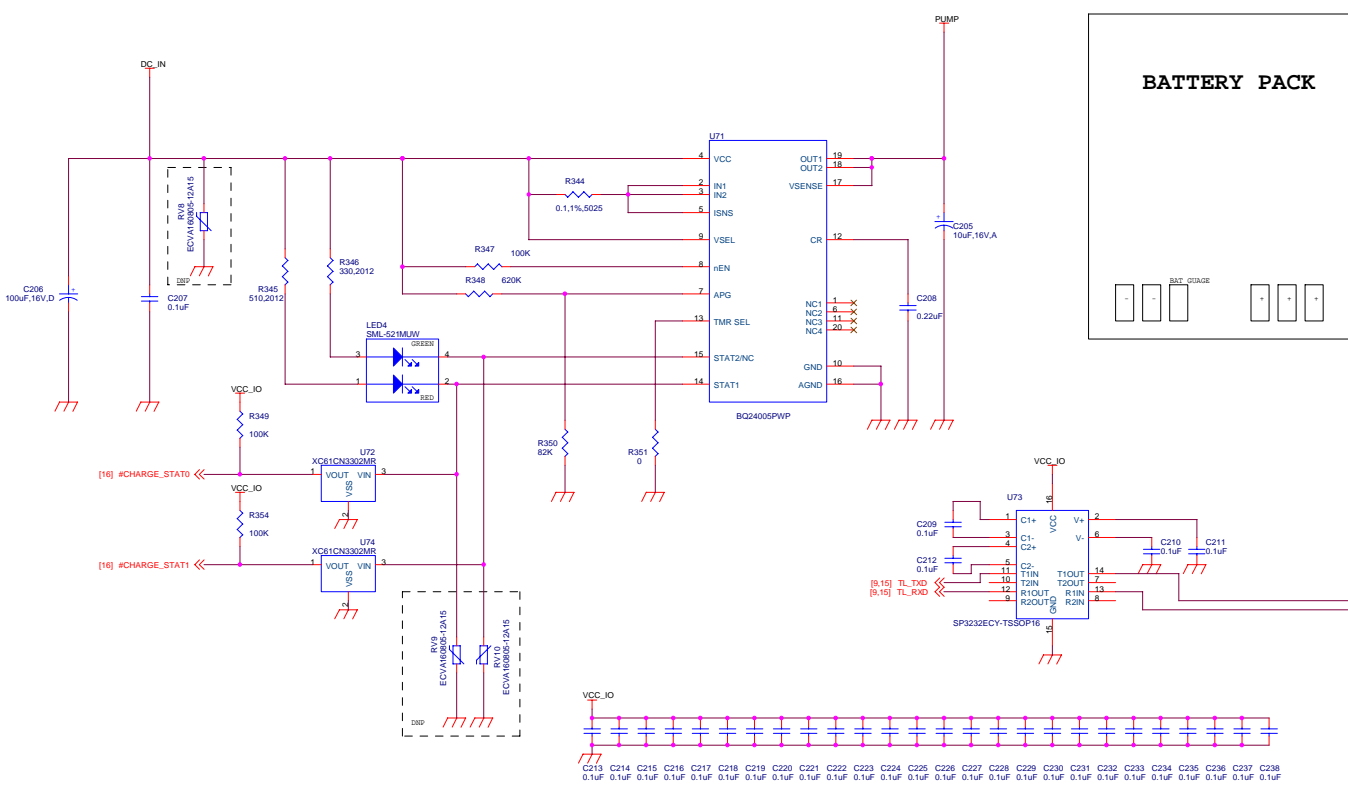
$$R1 = R2 \left\{ \left(\frac{V_{out}}{1.0} \right) - 1 \right\}$$

CPU Core
 400MHz: +1.3V (R1: 9.09K/1%)
 300MHz: +1.1V (R1: 3K/1%)
 200MHz: +0.9V

VOLTAGE MONITOR SETTINGS:
DBI=4.8V
LBI=6.5V

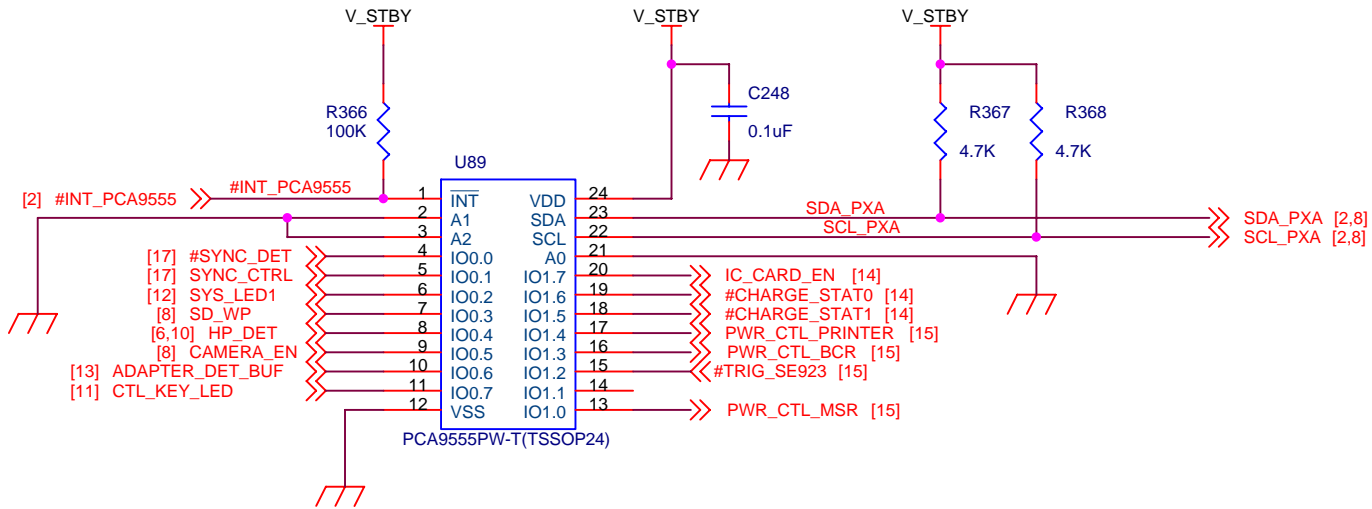
BACKUP CONDITION
 ACO: LOW
 DBI: UNDER 1.2V

INFOMOVE		
Title: MAIN-POWER		
Size: C	Document Number:	Rev: 0.43
Date: Tuesday, September 12, 2006	Sheet: 13	of: 17



LED Status

CHARGE STATUS	BQ24007	BQ24005	
	Single Color	STAT1	STAT2
Precharge	RED	RED	OFF
Fast Charge	RED	RED	OFF
Fault	BLINKING	RED	GREEN
Charge Complete (>90%)	OFF	OFF	GREEN
Sleep Mode	OFF	OFF	OFF
APG/Therm Invalid	OFF	OFF	OFF
Thermal Shutdown	OFF	OFF	OFF
Battery Absent	OFF	OFF	OFF



Title		
<Title>		
Size	Document Number	Rev
A	<Doc>	
Date:	Tuesday, September 12, 2006	Sheet 16 of 17

