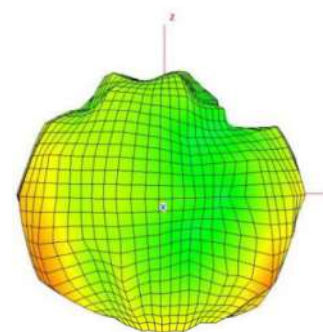
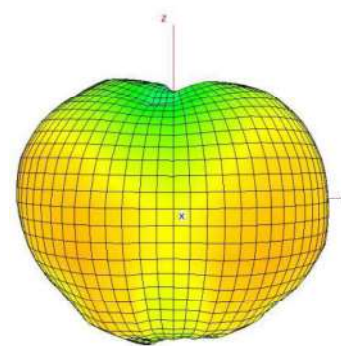
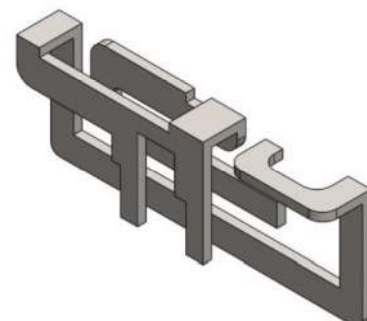


Features

- Dual band IEEE 802.11 a/b/g/n/ac/ax standard
- On board mount
- High efficiency
-

Specification(Preliminary)

Frequency (MHz)	2400 ~ 2500	5150 ~ 5825
Peak Gain (dBi)	0.98	3.93
VSWR	2.0:1	2.0:1
Power (Watts)	1	1
Impedance (Ohms)	50	50
Dimension (mm)	10.95 x 1.7 x 4.15	
Type	PIFA	
Material	nickel plated brass	
Operating Temp (°C)	-40°C ~ +85°C	
Packing	Tray	



5GHz