

Internet Camera

Quick Installation Guide

The QIG will guide you through the basic setup of your product.
The detail instruction is stated in the user's manual.

1. Check your package contents

- One Internet Camera
- One Power Adapter
- One Camera Stand accessory kit
- One 100cm Category 5 Ethernet Cable
- One Quick Installation Guide
- One CD (Including Manual/Utility/Driver)

If any of the above items are missing, please contact your supplier.

2. System Requirement

System requirement for PC, MAC or Notebook PC to access the Internet Camera are:

- OS System: Windows 2000, XP + SP2, Server 2003, Vista32/64, Win7
- CPU: Intel Pentium III 750MHz above or Intel Celeron 1GHz above
- Memory Size: 128MB (256MB recommended)
- VGA Card Resolution: 800 x 600 or above

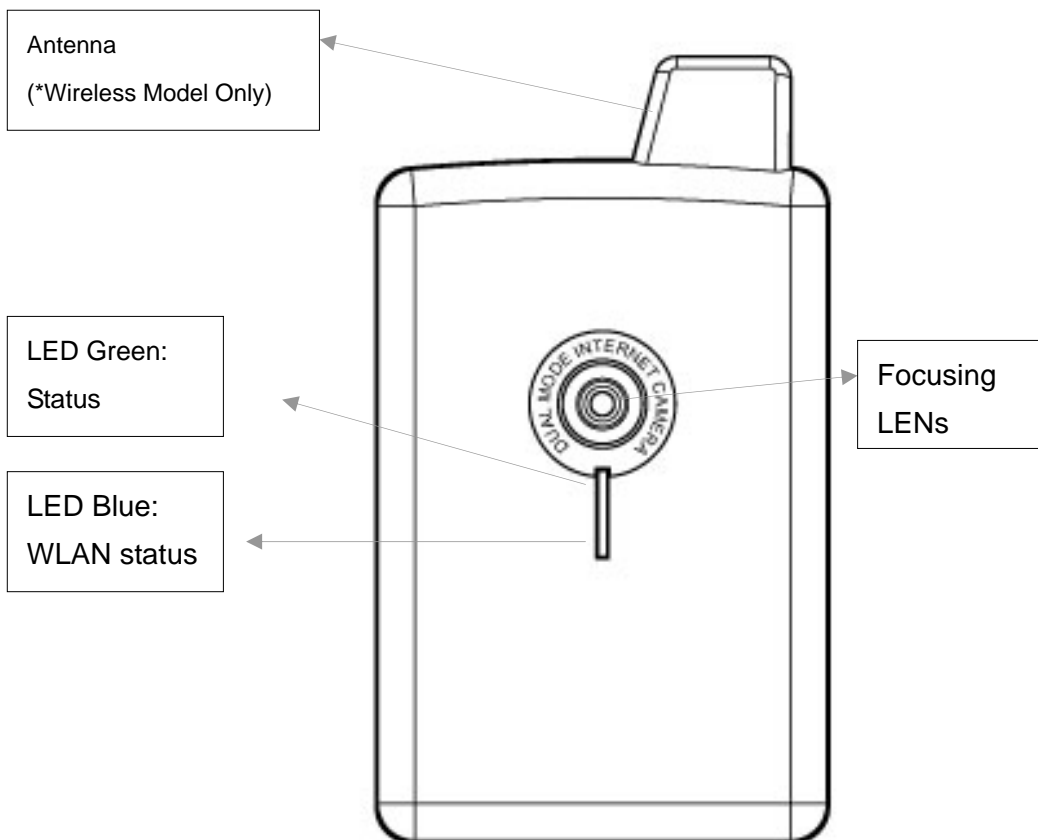
3. Hardware Installation

3.1. LED and Focusing

The Camera head and its focus ring allow you to modify the aim and focus of the Camera. To adjust the Camera's focus, rotate the dark focus ring.

There are two LEDs indicating the camera status and networking status.

- **Green**
Steady: System is ready
Blinking: System is booting.
- **Blue**
Steady: LAN is connected.
Blink: WLAN is activated.



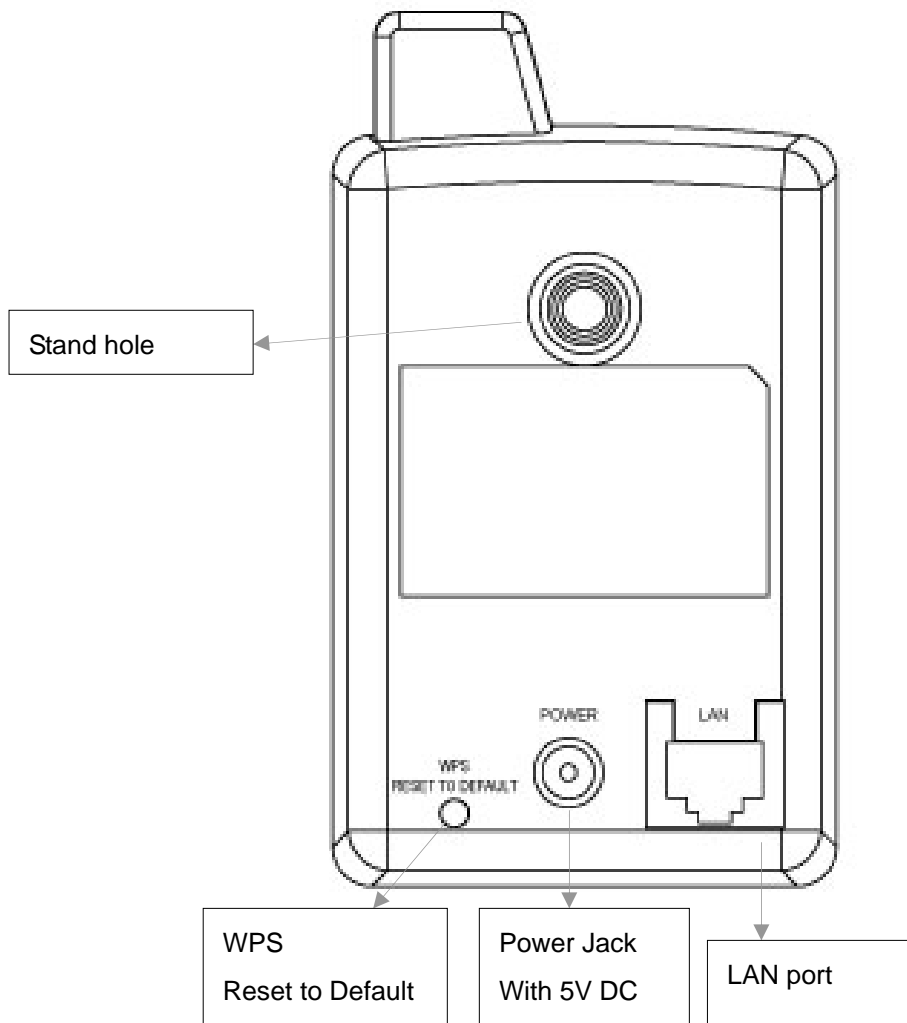
3.2. Camera Ports

The Camera features two ports and a button.

Button: 1 click for WPS function(wireless model) or reset function or hold for more than 5 seconds to reset the camera settings to factory default value.

Power Jack: Connect to power adapter for power supply with 5V DC.

LAN Jack: Connect to your local area network by network cable.



3.3. Installation Procedure

1. Unpack the Internet Camera package and verify that all the items listed in the Chapter 1 are provided.
2. Connect the Internet Camera to your network by attached the network cable from the switch/router to the LAN port of the Internet Camera.
3. Connect the power adapter to the Internet Camera and plug the power adapter to power outlet. The Internet Camera will be powered on. When the Internet Camera is ready, the Green LED will light.

Note: It is highly recommended to use the power adapter shipped with the Internet Camera, do NOT use any other power adapter from any sources.

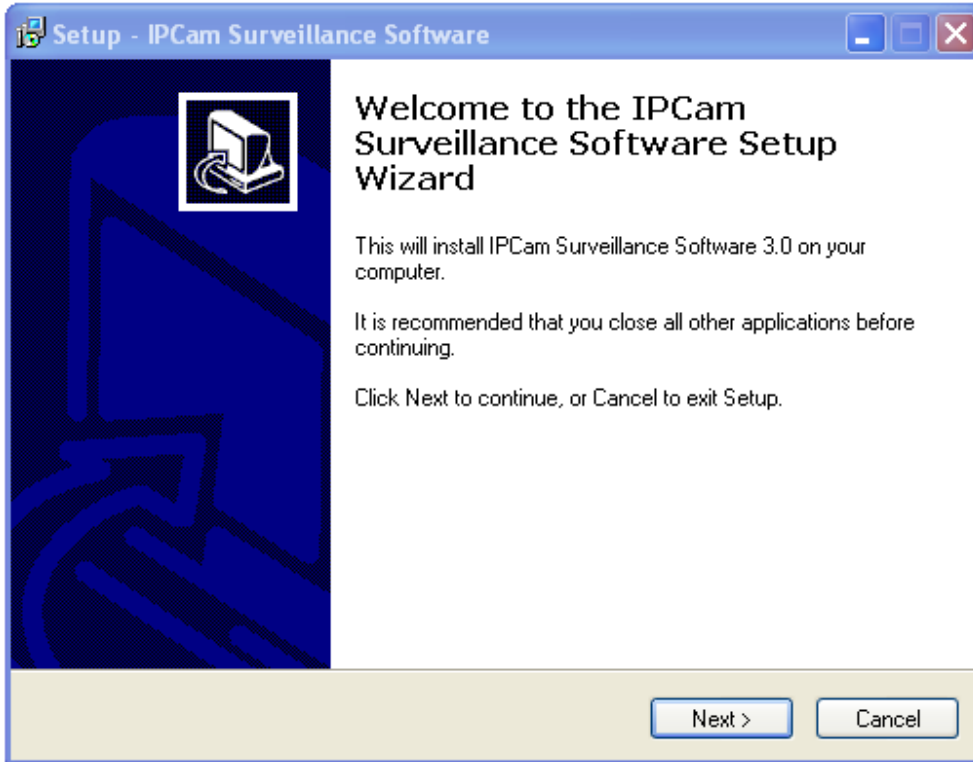
4. Software Installation

Follow the simple steps below to run the Install Wizard to guide you quickly through the Installation process. The following installation is implemented in Windows XP. The installation procedures in Windows 2000/XP/Server 2003/Vista/Win7 are similar.

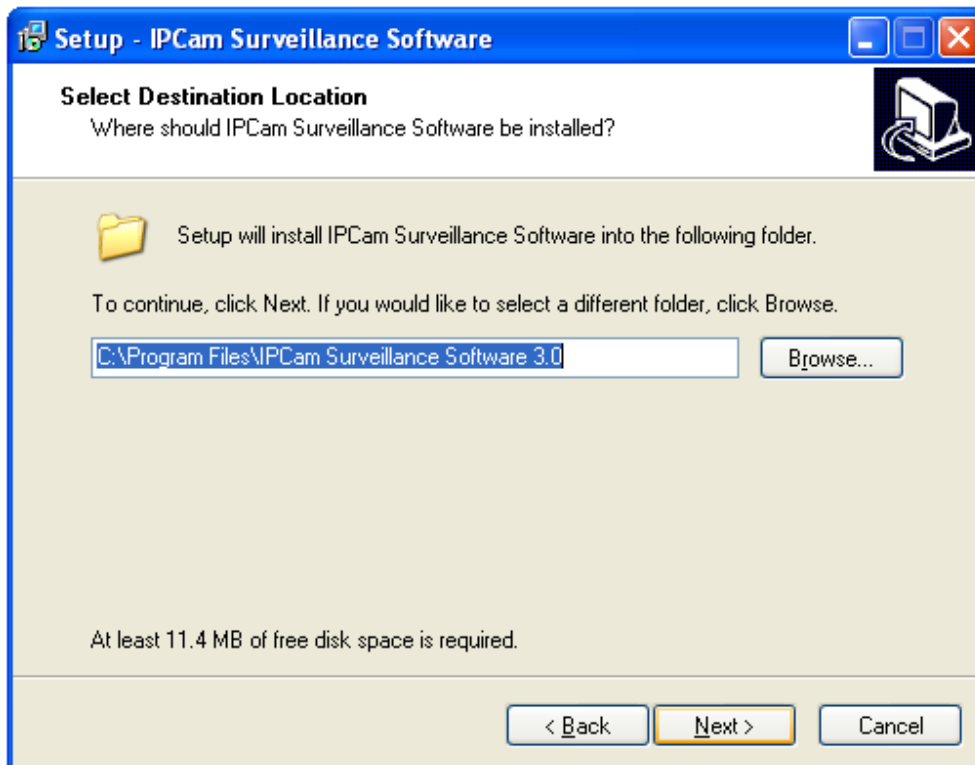
1. Insert the CD shipped along with the Internet Camera into your CD-ROM drive. The “Autorun.exe” program should be executed automatically. If not, run “Autorun.exe” manually from “Autorun” folder in the CD.
2. The Install Wizard will show four selections, select the program you want to install or click “Exit” to install the program later. The following installation steps are the demonstration of “Install Administrator Utility” and “Install 16 Chan Camera Viewer”.



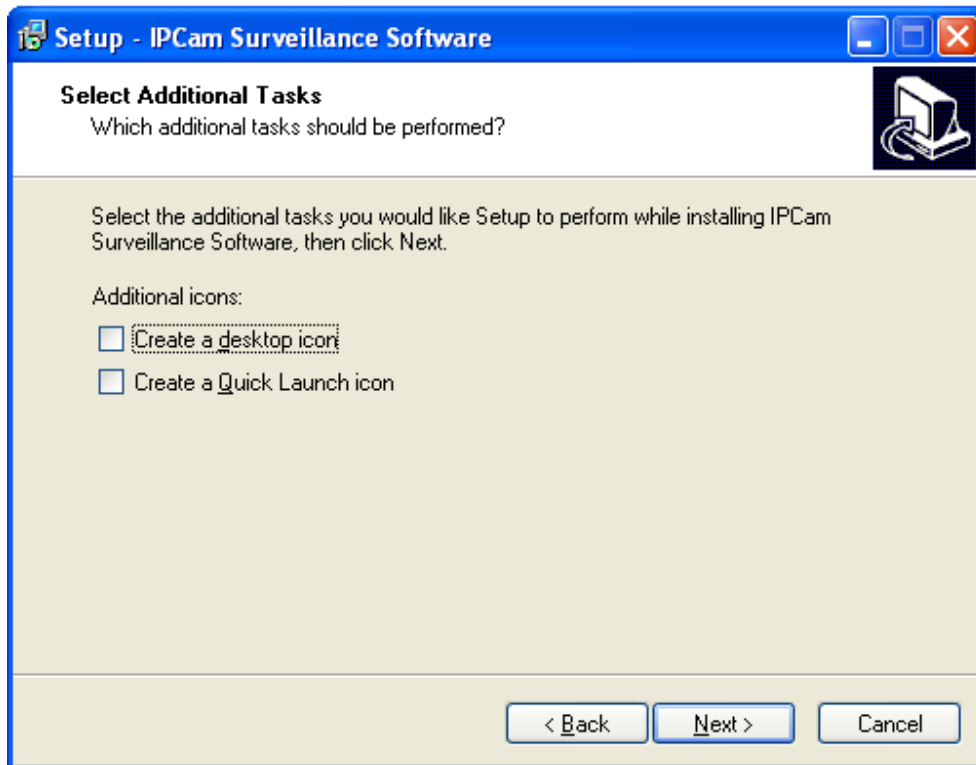
3. Click "Install Administrator Utility" and when the following window appears, click 'Next'.



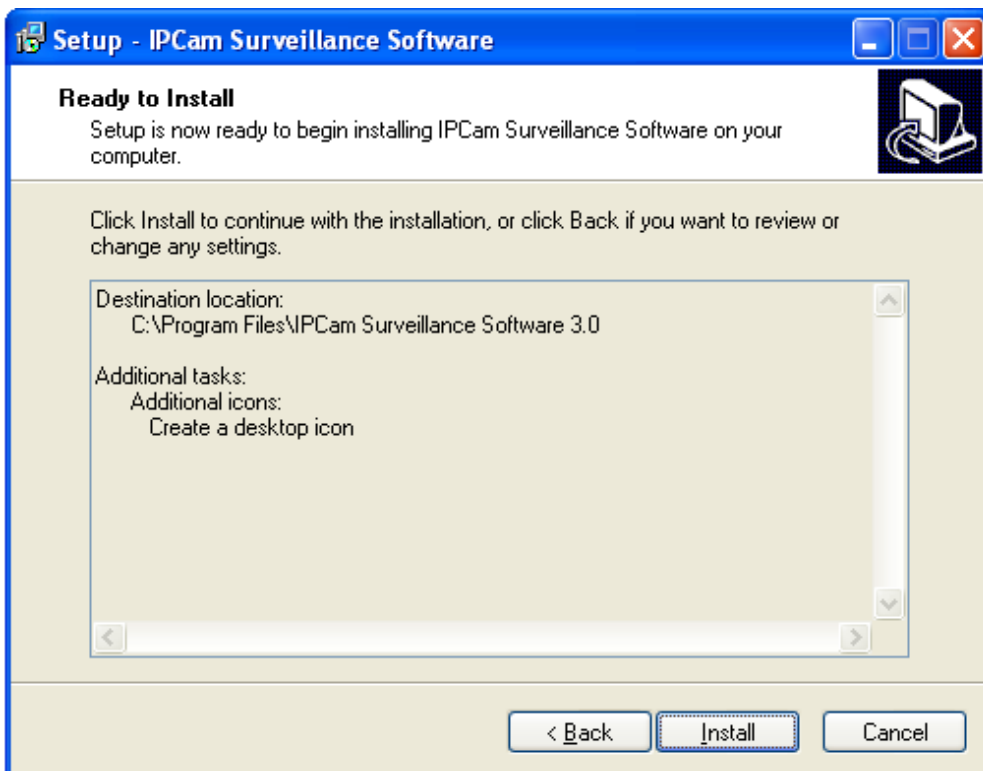
4. You can specify the destination folder of software installation, you can just use the default folder, and click 'Next' to continue.



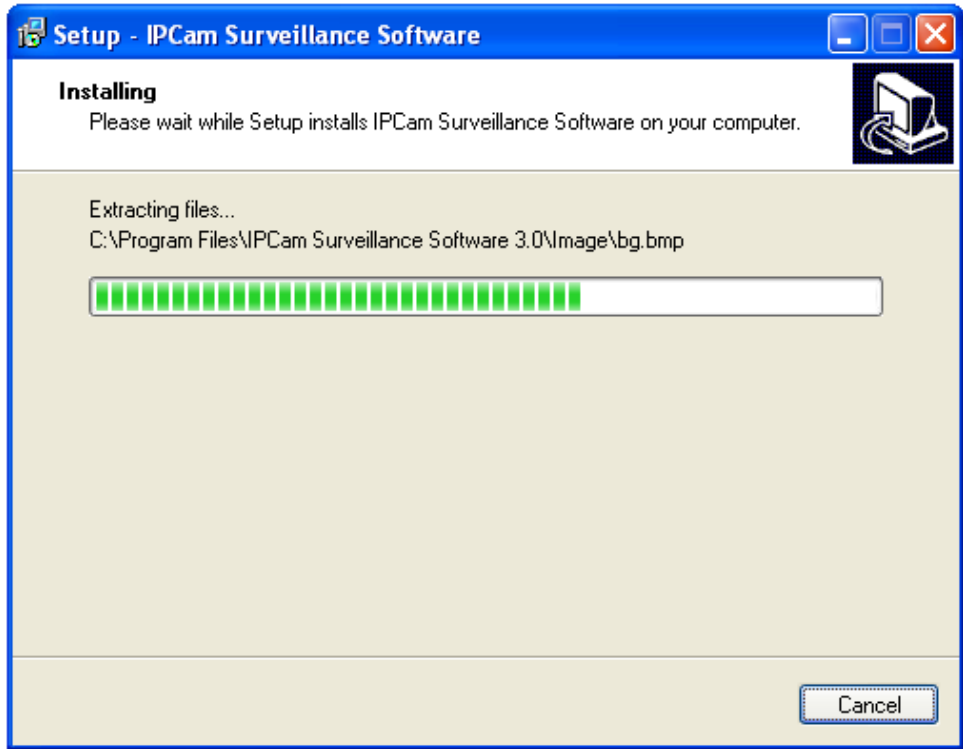
5. If you need installation program to create a desktop icon or a quick launch icon for you, click all items you need here, and click 'Next' to continue.



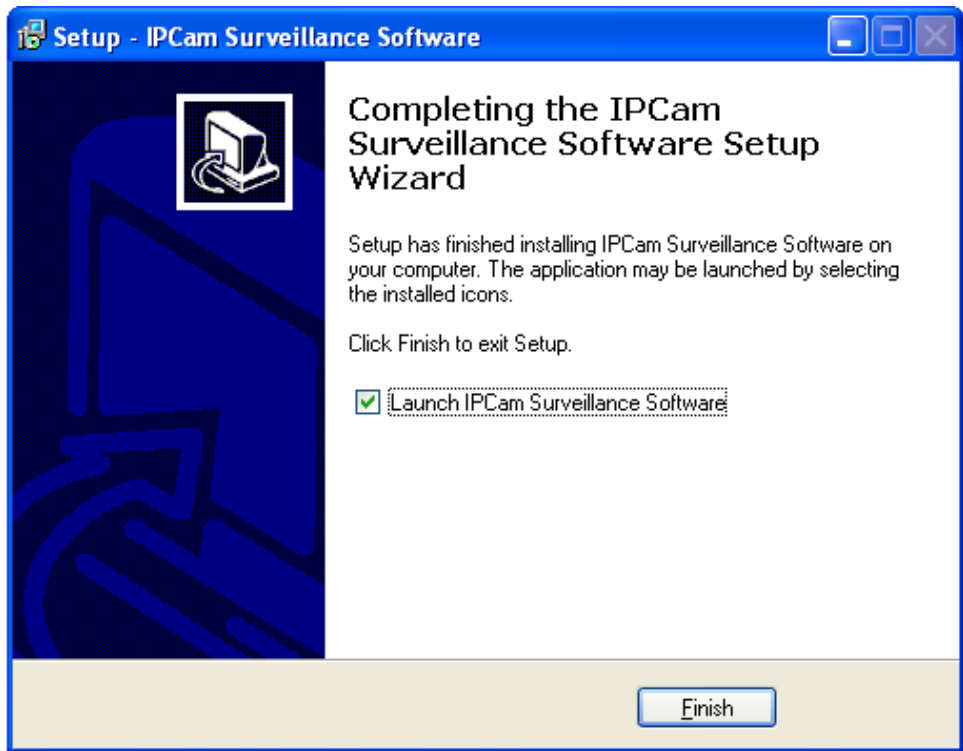
6. Here lists all options you chose in previous steps, if everything's correct, click 'Install' to start installing procedure, or click 'Back' to go back to previous step to modify installing settings.



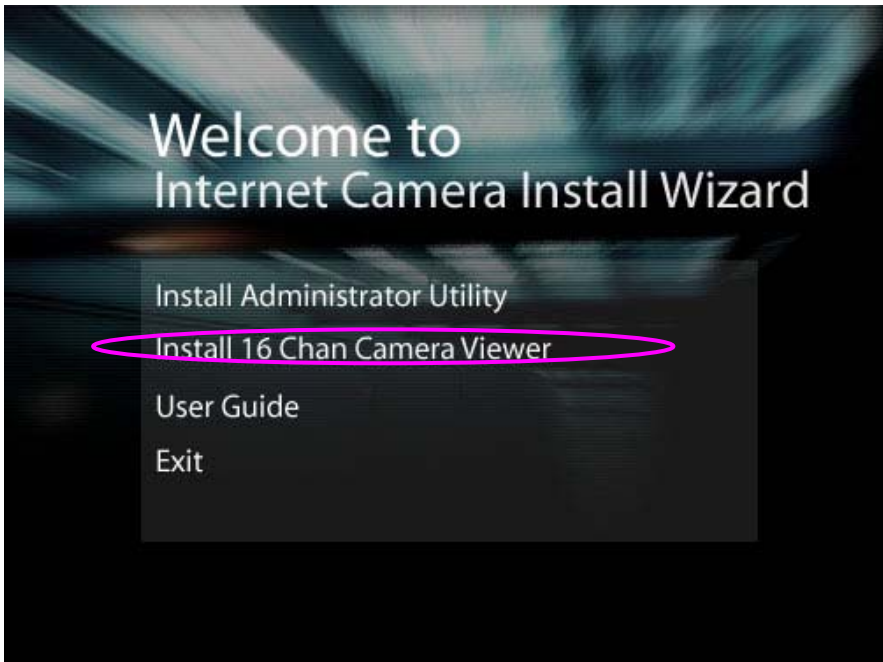
7. The installing procedure will take some time, please be patient.



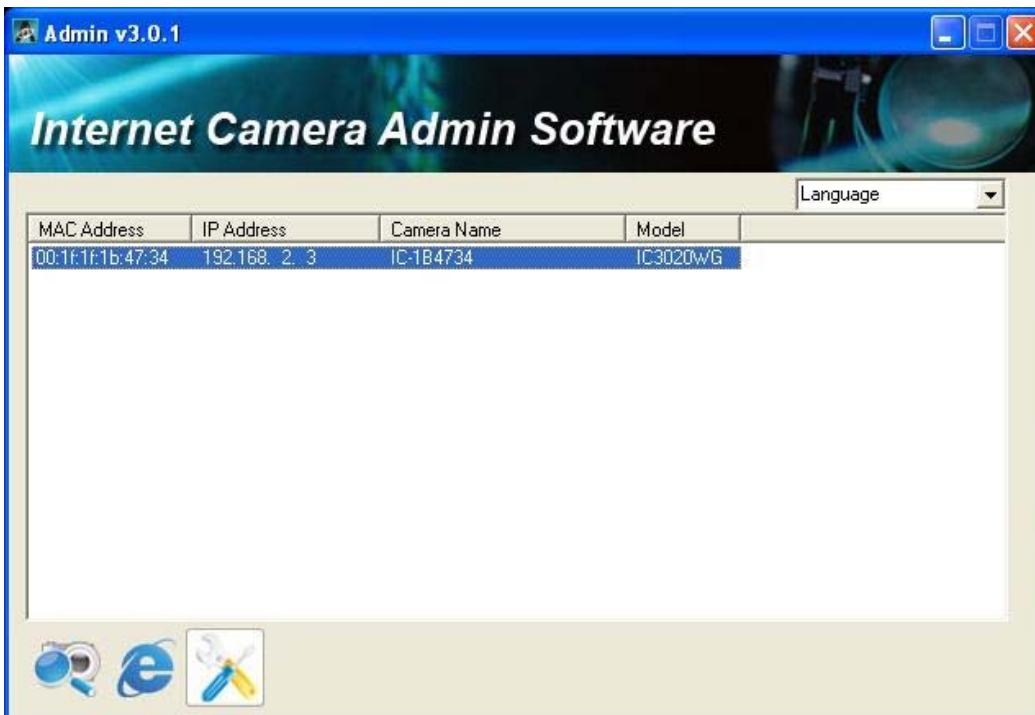
8. When you see this window, it means the software installing procedure is complete. Please click 'Finish' to finish the procedure (IP camera surveillance software will start after you click 'Finish' button, if you want to start it later, uncheck 'Launch IP Cam Surveillance Software' box).



9. After finished the installation of Administrator Utility, please go back to wizard page and click "Install 16 Chan camera viewer", the system will start running viewer installation and the procedures are similar to the installation of administration utility.



10. When the installation is completed. Please run "Administrator Utility". On the Internet Camera first page, the cameras found in the network are listed. Choose the one you want to configure and click "Setting Wizard" to proceed.



11. Please enter the default password “1234” and click “OK” to login to the IP setup page.



12. Internet Camera is working through the network (TCP/IP Protocol). The IP address setting must be correct, or you cannot access to the camera. The wizard program will detect the IP address status of your network automatically and suggest a free IP address for the Camera. You can accept the suggested value or enter the value manually. If you enter the value manually, please be aware that the “Subnet Mask” must be the same for both the camera and the PC. Click “OK” to apply the configuration.



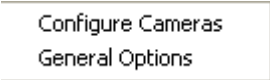
Or select "DHCP" to obtain an auto IP setting from DHCP server and click "OK" to apply the configuration.



13. Click 'IP Cam Surveillance Software' icon from desktop, quick launch bar, or start menu to start the IP camera surveillance software.

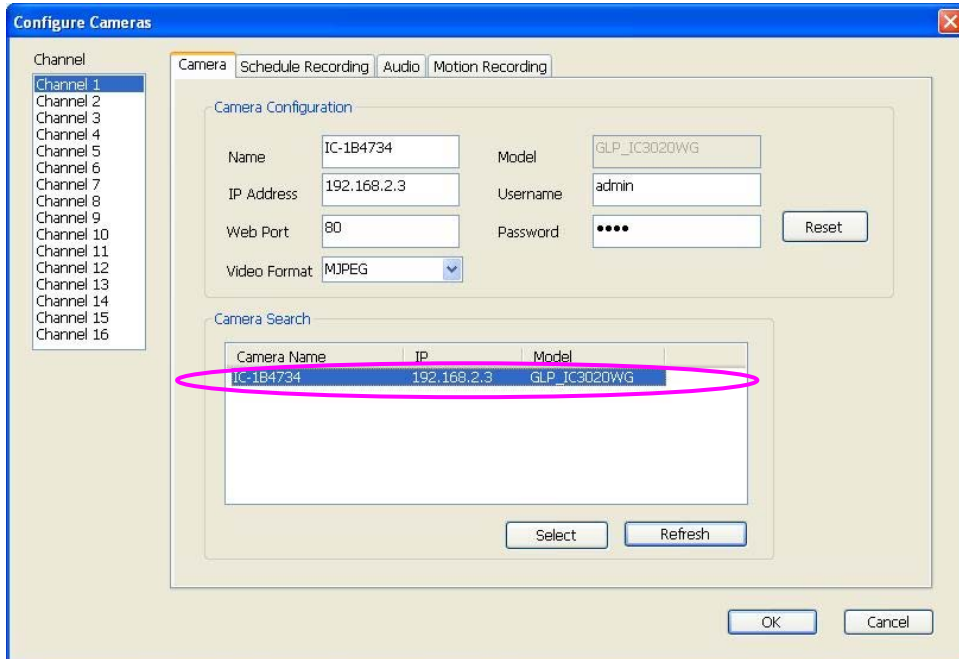


14. Please click 'System configure' button  and a popup menu will appear



Please select 'Configure Cameras' to configure cameras

15. In this table you can configure all cameras you wish to connect. Up to 16 cameras can be connected simultaneously, choose the camera you want to connect on the "Camera Search" list and click "Select" to add it into the channel you want to view then click "ok"



16. The IP Cam Viewer will pop out and the video will show on the channel you choose automatically. Congratulations!! you have settled the camera successfully.



Federal Communication Commission Interference Statement

This equipment has been tested and found to comply with the limits for a Class B digital device, pursuant to Part 15 of the FCC Rules. These limits are designed to provide reasonable protection against harmful interference in a residential installation. This equipment generates, uses and can radiate radio frequency energy and, if not installed and used in accordance with the instructions, may cause harmful interference to radio communications. However, there is no guarantee that interference will not occur in a particular installation. If this equipment does cause harmful interference to radio or television reception, which can be determined by turning the equipment off and on, the user is encouraged to try to correct the interference by one of the following measures:

- Reorient or relocate the receiving antenna.
- Increase the separation between the equipment and receiver.
- Connect the equipment into an outlet on a circuit different from that to which the receiver is connected.
- Consult the dealer or an experienced radio/TV technician for help.

FCC Caution: Any changes or modifications not expressly approved by the party responsible for compliance could void the user's authority to operate this equipment.

This device complies with Part 15 of the FCC Rules. Operation is subject to the following two conditions: (1) This device may not cause harmful interference, and (2) this device must accept any interference received, including interference that may cause undesired operation.

This device and its antenna(s) must not be co-located or operating in conjunction with any other antenna or transmitter.

FCC Radiation Exposure Statement:

This equipment complies with FCC radiation exposure limits set forth for an uncontrolled environment. This equipment should be installed and operated with minimum distance **20cm** between the radiator & your body.