

Product Name : Transmitter
Models : TE-310

GOLD APOLLO CO., LTD.
Rm 1, 3th Fl., No. 77, Secretary. 1, Hsin Tai Wu Rd.,
Hsi-Chih Hsien, Taiwan, R. O. C.
Tel : 886-2-2698-8888
Web site : [http\\www.apollo.com](http://www.apollo.com)

USER MANUAL

VHF UHF Transmitter

Models : TE-310 16KEY Transmitter

TE-310 Transmitter is used to page guests or staffs in a limited area, especially suitable for factory, restaurant and hospital. The operation is simple and friendly to keep good communication with your guests and staffs.

There are 19 push buttons for your choice. Each button is able to independently page a single person and also available to page more than one person at the same time, as well. In addition, it has the flash light as a reminder and also can repeat paging the guests/staffs automatically when the one you page has not shown up.

Transmitter

Be aware at following situations ,which will help to extend the life cycle of transmitter.

Don't change transmitter or tamper with its original appearance.

Don't put transmitter close to a heat source or in light direct sun.

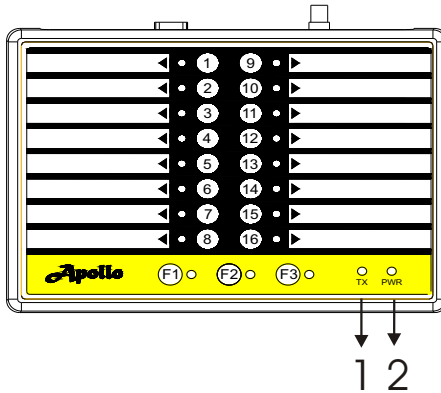
Don't put transmitter in dust , moisture or on uneven surface.

Don't soak transmitter into the water.

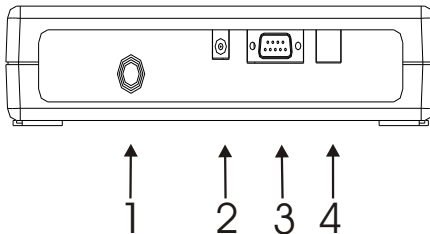
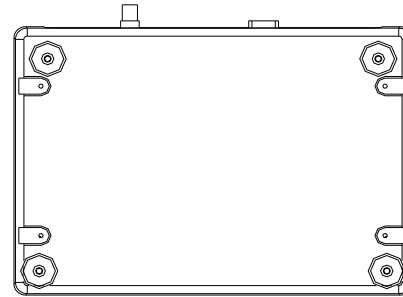
Never operate the device with out the correct Gold Apollo antenna , or a suitable artificial load , connected.

Function \ Location

Outlook



- 1.TX (Rad) Transmit LED
- 2.PWR(Orange) Power LED



- 1. Antenna Connect (BNC 50 ohm)
- 2. Power Connect (8.4V/1.5A)
- 3. RS232 D-SUB (FEMALE 9PIN)
- 4. RJ-11 Telephone Jack To Cancer parer.

System Specifications

1. Frequency range : 147~170MHz,
450~470MHz.
2. Modulation Type : F S K
3. Channel spacing : 12.5 / 25MHz
4. Output power (ERP): 1W
5. Maximum deviation: +/-4.5KHz
6. Harmonic Radiation : less - 25dBm
7. Frequency stability : 2.5ppm at -10C~60C
8. Output Connect : BNC (F)
9. Current Consumption :
Standby : 100mA ; Transmit : 400mA
7. Dimensions : 23.2 (W)*50 (H)*17(D)
8. Weight : 650g (No Antenna)

INSTRUCTION FOR OPERATION:

1. Activate paging:

Press any button among these 50 push buttons, the light will flash and enter active mode, then send the signal out.

To repeat paging : In the active mode, it can be programmed to send the same message every 30 sec. or 45 sec, or 60 sec, or 2 minutes, or 5 minutes or continuo

To page more than one person :

More than one button can be activated at the same time to page more than one person.

LED Sign Display:

It's an option on the software.

When the button is pressed, it will activate to send the signal and show the number on the LED Display at the same time. The numbers on the Display will be arranged by sequence, the first number always shows up firstly. , 30 minutes ,

2. Stop paging:

In the active mode or Time out mode, pressing the same button again to stop paging, at the same time the repeating and the number on the LED sign will be cancelled.

3. "Time out" Message display:

Once the option of "Time Out " message display is enable, the button will be flash after being pressed for a certain time, and will also send the message to the assigned location or person as a reminder

4. Heart Beat (anti-theft):

After activate the option of "heart beat ", the transmitter will send heart beat signal every 15 sec, 30 sec, 45 sec, 1 minute, 2 minutes, 4 minutes or 6 minutes. The time-gap is programmable.

Instruction for Flash Light:

1. Active mode: when the button is pressed , the light will be turned on to enter the active mode, then the signal will be sent and repeated, as well.
2. Stop mode: Re-pressing the button to turn off the light represented "Stop mode ". Under the active mode or "Time Out " mode, to press the button again can also enter stop mode.
3. Time Out mode: After repeating paging for a certain time, the light of button will be flashing, then go to Time out mode,

Instruction for programming:

1. Activate screen: to set up basic configurations , such as cap code and frequency from button No. 1 to button No. 19

TE310

File(F) Page IoFlash System About

Channel Space Frequency 00Hz Port

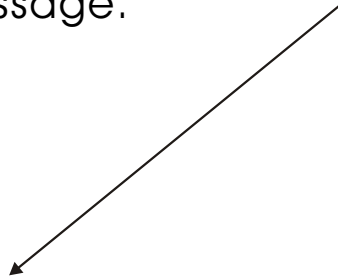
Baud FunBit ☐ Invert Polarity Version

Pager DataBase | **Config Page**

Index	Address	Index	Address	Index	Address	Index	Address
1	<input type="text" value="1234560"/>	2	<input type="text" value="1234561"/>	3	<input type="text" value="1234562"/>	4	<input type="text" value="1234563"/>
5	<input type="text" value="1234564"/>	6	<input type="text" value="1234565"/>	7	<input type="text" value="1234566"/>	8	<input type="text" value="1234567"/>
9	<input type="text" value="1234568"/>	10	<input type="text" value="1234569"/>	11	<input type="text" value="1234570"/>	12	<input type="text" value="1234571"/>
13	<input type="text" value="1234572"/>	14	<input type="text" value="1234573"/>	15	<input type="text" value="1234574"/>	16	<input type="text" value="1234575"/>

Index	Address	Type	Canned	Length	Content
F1	<input type="text" value="1234600"/>	<input type="text" value="Alpha"/>	<input type="checkbox"/>	<input type="text" value="0"/>	<input type="text"/>
F2	<input type="text" value="1234601"/>	<input type="text" value="Alpha"/>	<input type="checkbox"/>	<input type="text" value="0"/>	<input type="text"/>
F3	<input type="text" value="1234602"/>	<input type="text" value="Alpha"/>	<input type="checkbox"/>	<input type="text" value="0"/>	<input type="text"/>

2. To setup the cap codes and type from button No. F1,F2,F3 .butt Please be sure to click " Canned " first to type the content of message.



Index	Address	Type	Canned	Length	Content
F1	1234600	Alpha	<input type="checkbox"/>	0	
F2	1234601	Alpha	<input type="checkbox"/>	0	
F3	1234602	Alpha	<input type="checkbox"/>	0	

3.Config :

The screenshot shows the TE310 configuration software interface. The title bar is blue with the text 'TE310' and standard window controls. The menu bar includes 'File(F)', 'Page', 'IoFlash', 'System', and 'About'. Below the menu bar is a toolbar with four icons: a document, a document with a red X, a document with a green checkmark, and a document with a magnifying glass. The main configuration area has two rows of controls. The first row contains 'Channel Space' (12.5K), 'Frequency' (4545000 00Hz), 'Port' (COM 1), and a 'Reset' button. The second row contains 'Baud' (1200 bps), 'FunBit' (0 0), an 'Invert Polarity' checkbox, and a 'Version' button. Below this is a tabbed interface with 'Pager DataBase' and 'Config Page' tabs. The 'Config Page' tab is active, showing a 'Config' section with four controls: 'Beep OFF' checkbox, '128Hz Wave Out' checkbox, 'TX RepeatTime' (30 second), and 'HeartBeat' (Disable).

TE310

File(F) Page IoFlash System About

Channel Space 12.5K Frequency 4545000 00Hz Port COM 1 Reset

Baud 1200 bps FunBit 0 0 ☐ Invert Polarity Version

Pager DataBase Config Page

Config

☐ Beep OFF ☐ 128Hz Wave Out

TX RepeatTime 30 second HeartBeat Disable

3. Configuration Instruction:

TIME OUT LED OFF : to enable this option, when it's time out for a certain number, it will enter off mode after the time out message is sent if there is a message preprogrammed.

BEEP OFF : to enable this option, this button has no beep sound

Time Out : to enable this option represent the button has been pressed for a certain time and not been delete yet, the light of button can be flash or send out the message to an assigned location or person as reminder. It can be programmable for 5 min, 10 min, 15 min, 30 min, or disable.

TX Repeat time : to set up time-gap for repeating page before Time out , it can be programmable for 30sec , 45 sec, 60 sec, 2 min, 5 min or disable

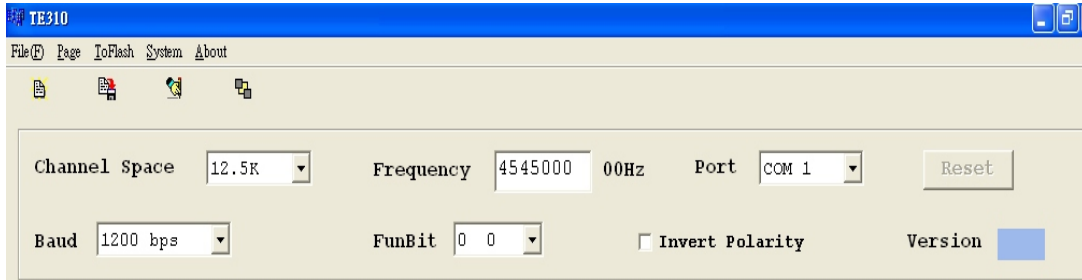
LED Msg, enable : to enable this option, the number you press will be shown on the LED display.

LED SIGNCAPCODE: to set up the cap code of LED sign display

Head of LED Sign message : the title displayed on the LED Sign

Timeout Msg. Enabl: to enable this option, the preprogrammed message will be sent out when it's time up

Head of Timeout message: the title displayed before the Time out message.



4. Write: please see the above

In the main menu of the window to execute the command of "To flash\Write" for programming

5. Read: please see the above

in the main menu of the window to execute the command of "ToFlash\Read" to read the data.