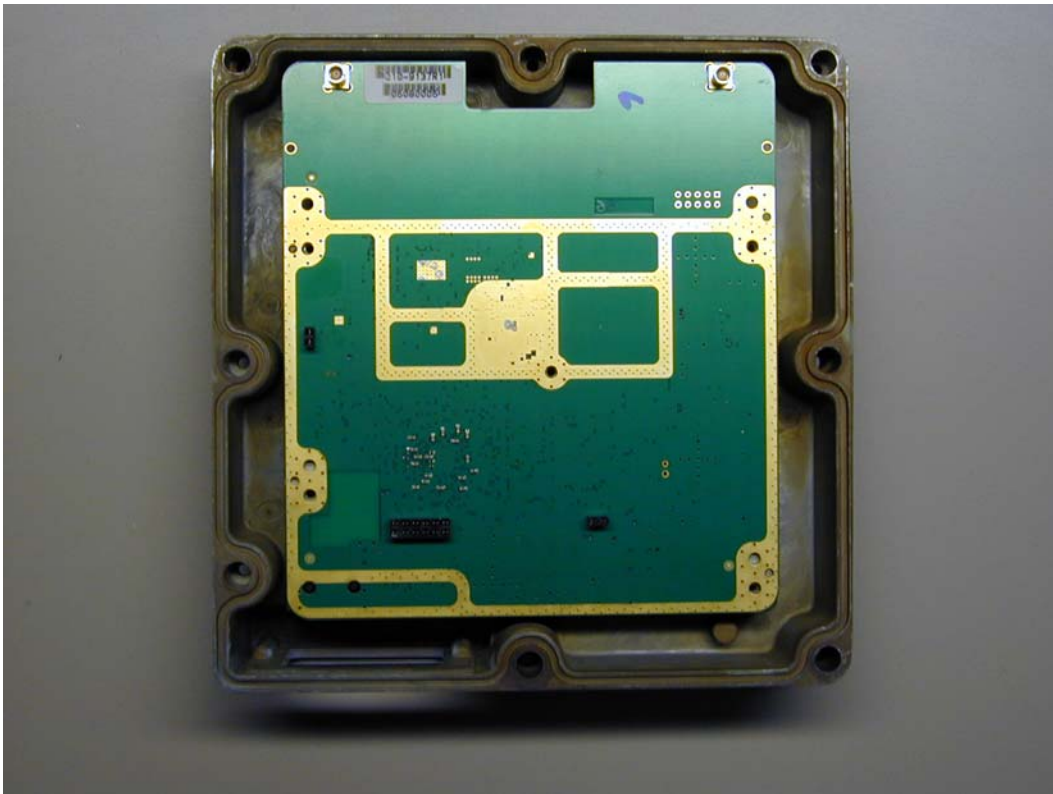




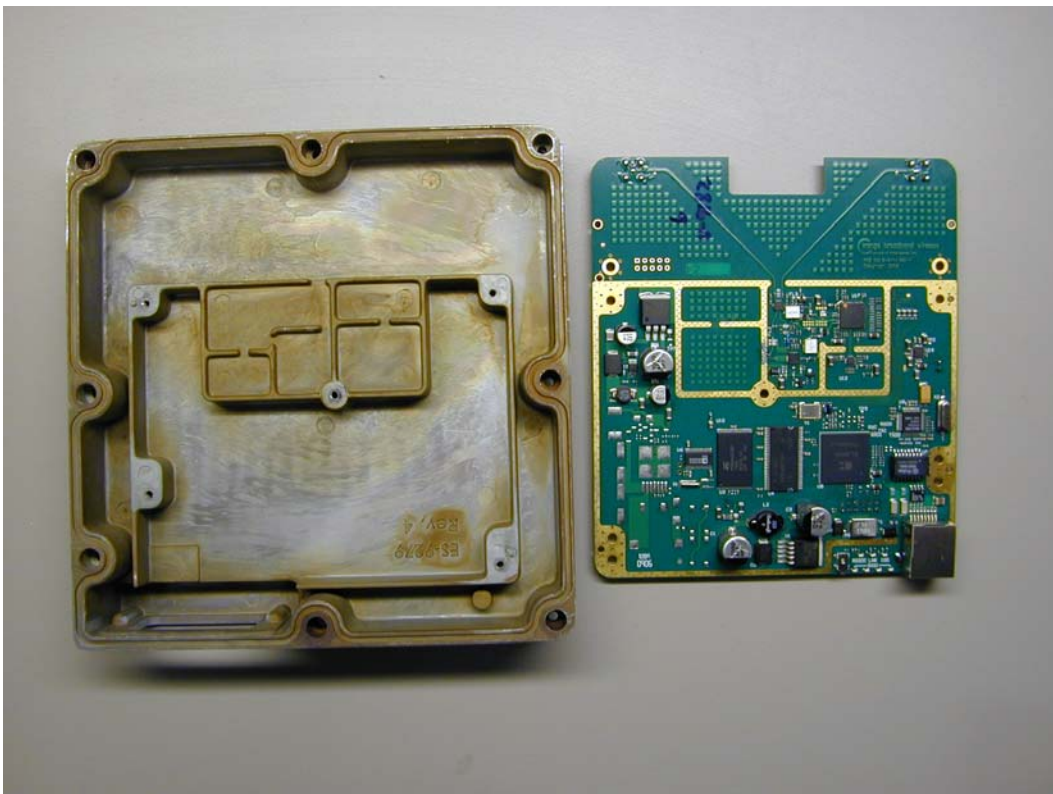
Internal – Inside antenna, radome removed



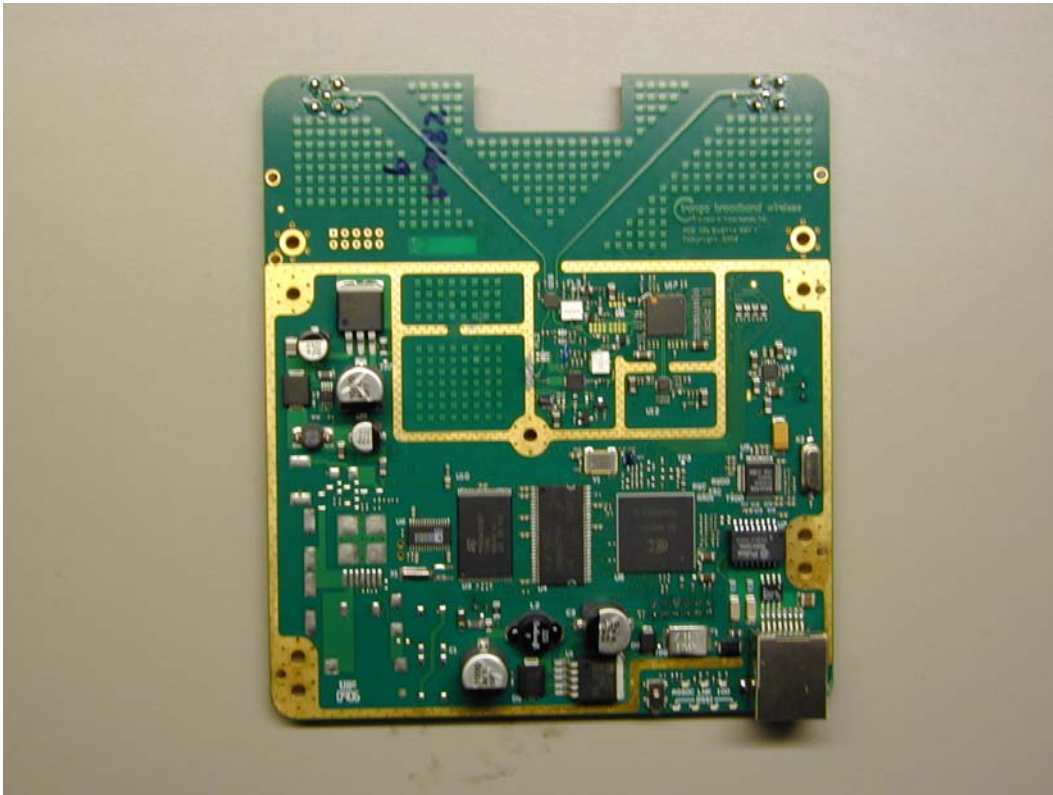
Internal – Inside antenna, parasitic array removed



Internal – View of radio mounted in shield, gasket and frame installed – Same for all three models



Internal – Radio removed from shield– Same for all three models

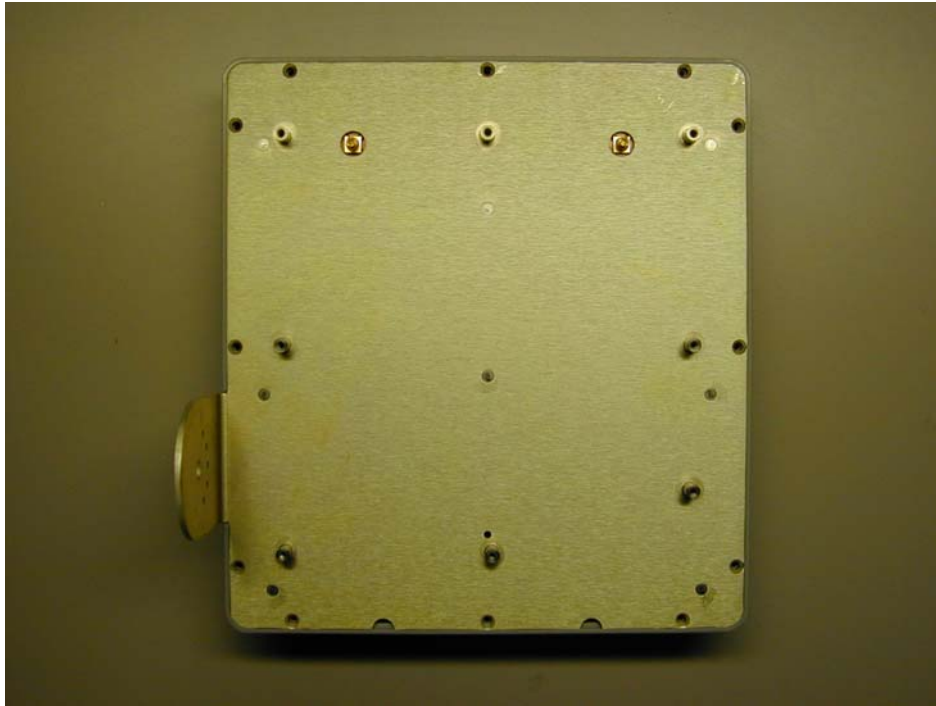


Internal – Top side of radio PCB– Same for all three models

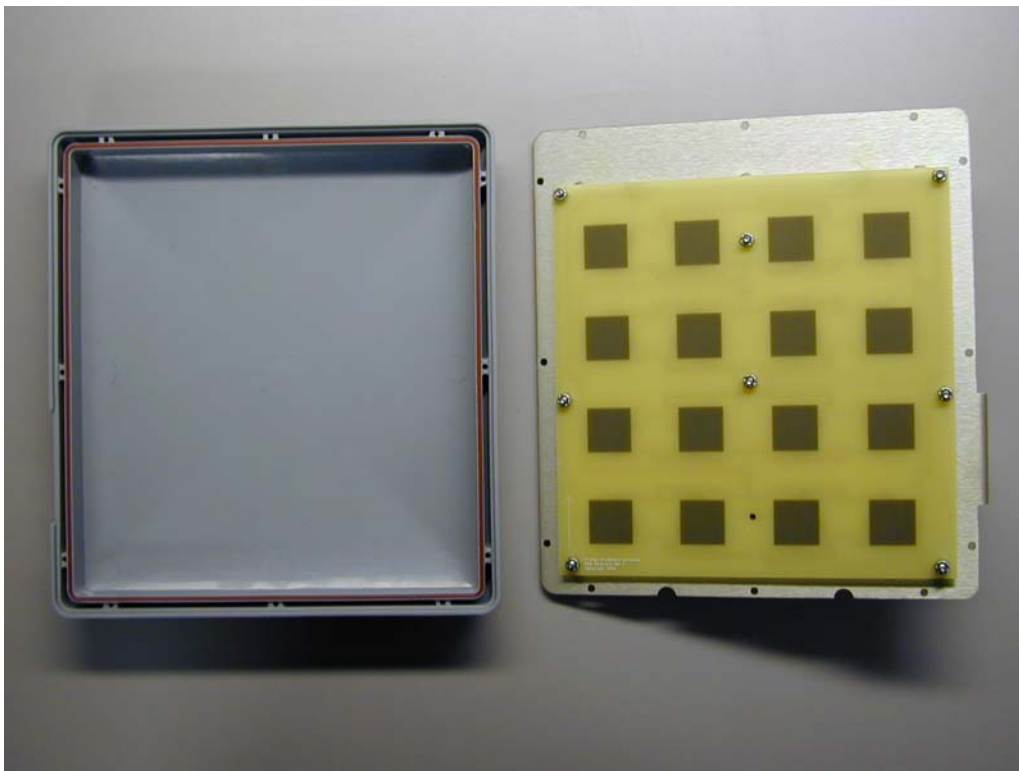


Internal – Back side of radio PCB – Same for all three models

P4900M-INT-18 Model



Internal antenna without radio subassembly



Internal antenna radome with gasket and antenna