

Horizontally Polarized Sector Antennas

5400 to 5850 MHz Operation

Features

- Horizontally Polarized
- 90 deg 17dBi and 120 deg 16dBi models
- Type N Female Integrated Connector
- Extremely Rugged for long service life in extreme environments
- Completely Weatherproof

Applications

- 5.8GHz U-NII Band Applications
- Point to Multi-point Systems
- Base Station Antennas
- 802.11a Applications

Description

The Horizontally Polarized Sector antenna systems offered by Pacific Wireless are constructed of UV stable ABS plastic radomes and heavy galvanized brackets for long service life in the most demanding conditions. The Horizontal Polarization allows for reduced interference potential in systems which are installed in areas with high levels of vertically polarized RF noise or where the system manager wants to avoid potential future problems with interference. The super heavy duty bracket system is easy to install and adjust for up to 30 deg of downtilt.



HPOL Sector

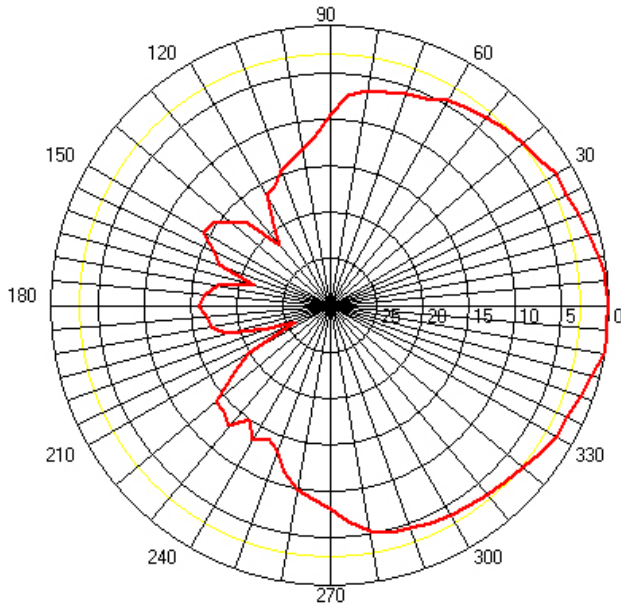
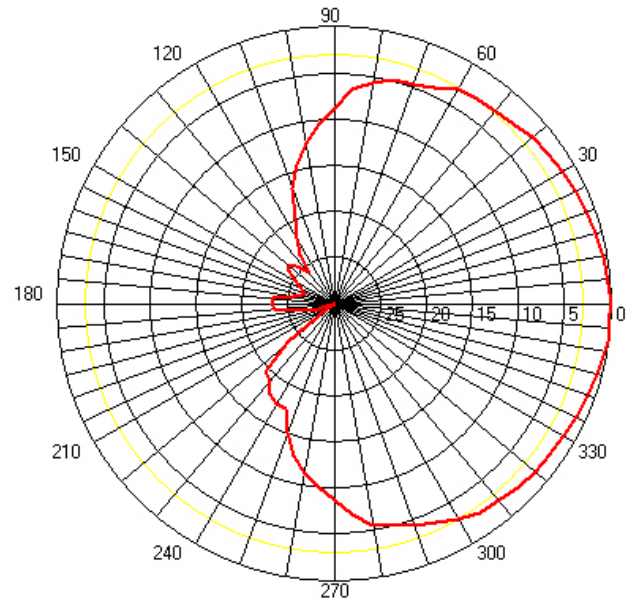
Specifications

Parameter	Model	Min	Typ	Max	Units
Frequency Range	SAH57	5400		5750	MHz
	SAH58	5725		5850	MHz
Input Return Loss (S_{11})			-14		dB
VSWR			1.5:1		
Impedance			50		OHM
Input Power				100	W
Pole Diameter (OD)		1" (25)		2.5" (64)	Inch (mm)
Operating Temperature		-40		+70	Deg C

	Model	SAH5x-90-xx	SAH5x-120-xx
Gain	SAH57	17 dBi	16dBi
	SAH58	17 dBi	16dBi
Horizontal Beam Width		90 deg	120 deg
Vertical Beam Width		8 deg	
Polarization		Horizontal	
Front to Back		>25 dB	
Mechanical Downtilt		30 deg	
Weight		10 Lb (4.5kg)	

Dimensions (LxWxH)

31" x 6.5" x 2.5" (790 x 165 x 51mm)

Antenna Patterns at 5.750GHzSAH5x-90-xx
E-PlaneSAH5x-120-xx
E-Plane

Wind Loading			
Model	Sq. In	100MPH	125MPH
SAH5x	182	45.5 lb	71.1 lb



Top Bracket

Notes:

- All shipments F.O.B. Pacific Wireless Bluffdale, UT 84065
- All antennas carry a 2 Year Warranty

System Ordering: SAH5□ - □□ - □□**Frequency**

7 = 5400-5750MHz

8 = 5725-5850MHz

Horizontal Beamwidth

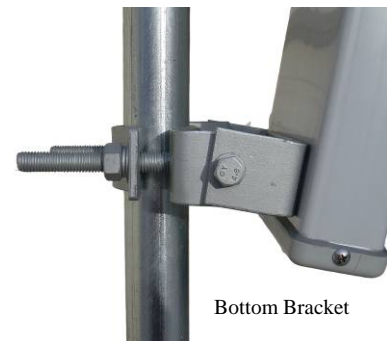
90 = 90deg

120 = 120deg

Antenna Gain

17 = 17dBi

16 = 16dBi



Bottom Bracket

For further information contact:**Pacific Wireless**

14575 South Centerpoint Way
Bluffdale, UT 84065
TEL (801) 572-3024
FAX (801) 572-3025
www.pacwireless.com