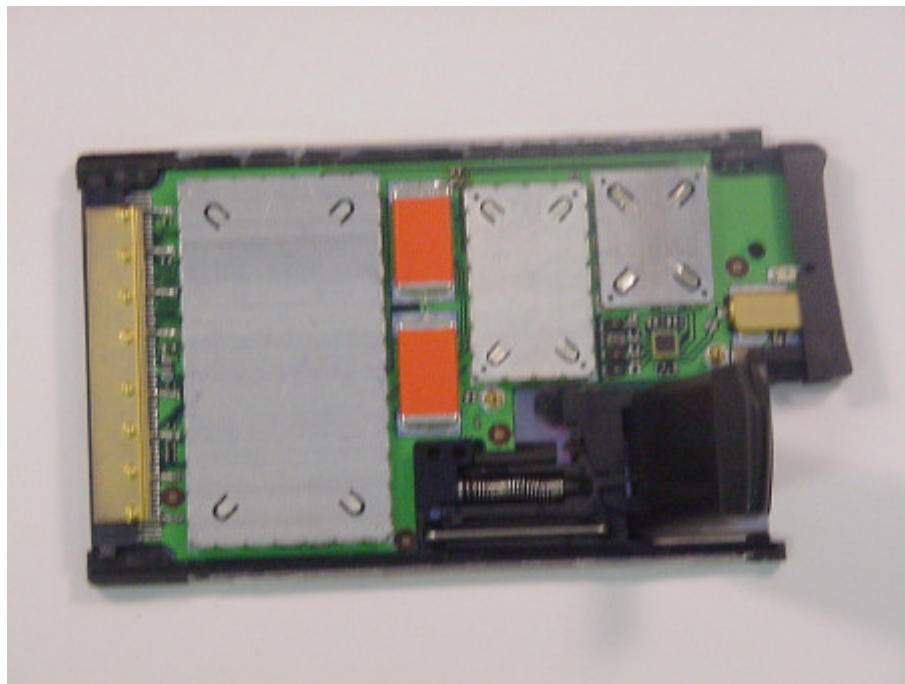


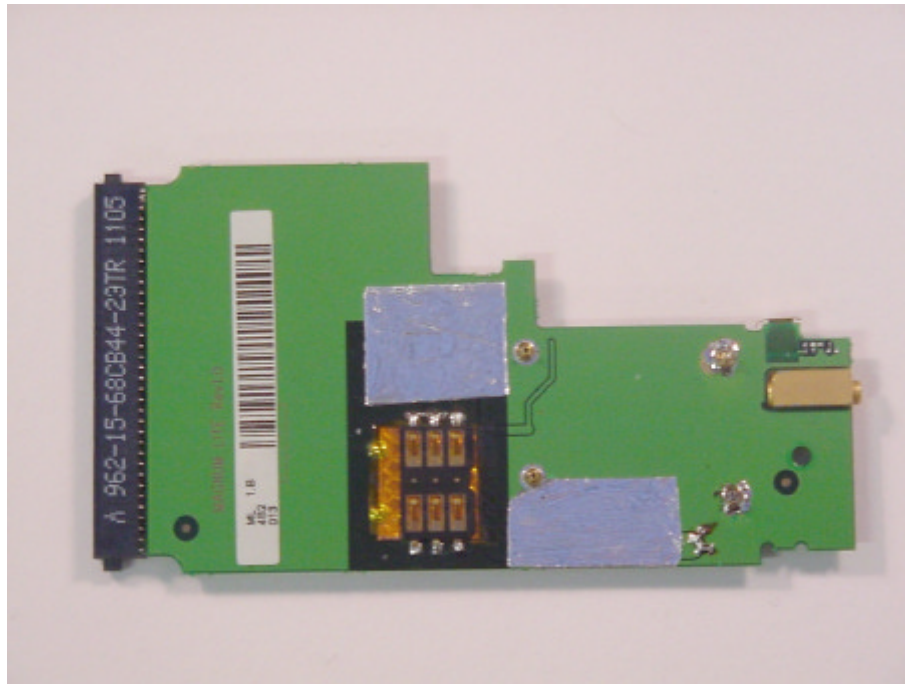
Foto Report



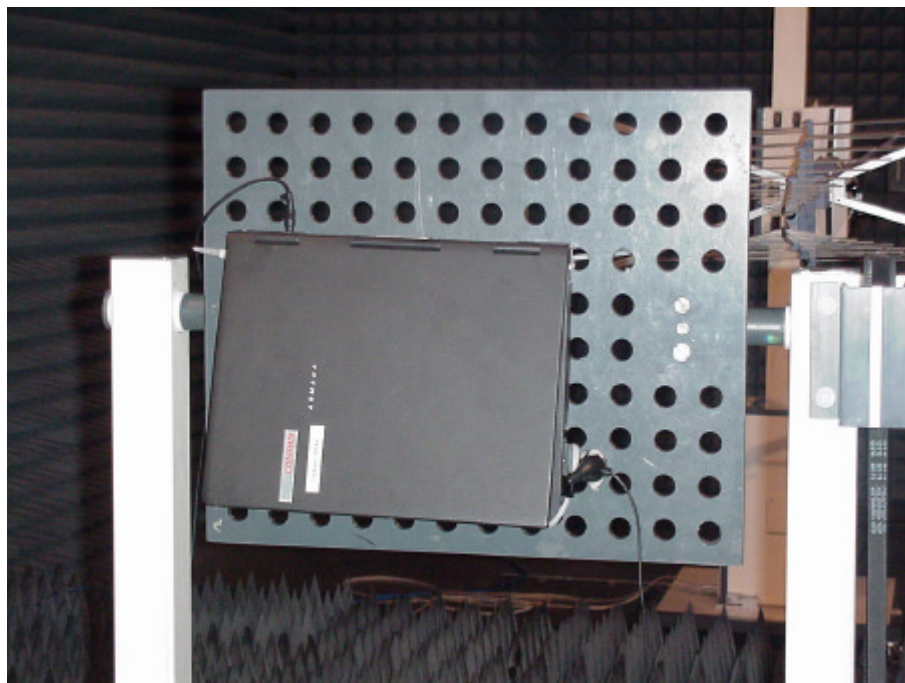
Picture 1 : EUT (topside, with antenna connector for radiated measurements)



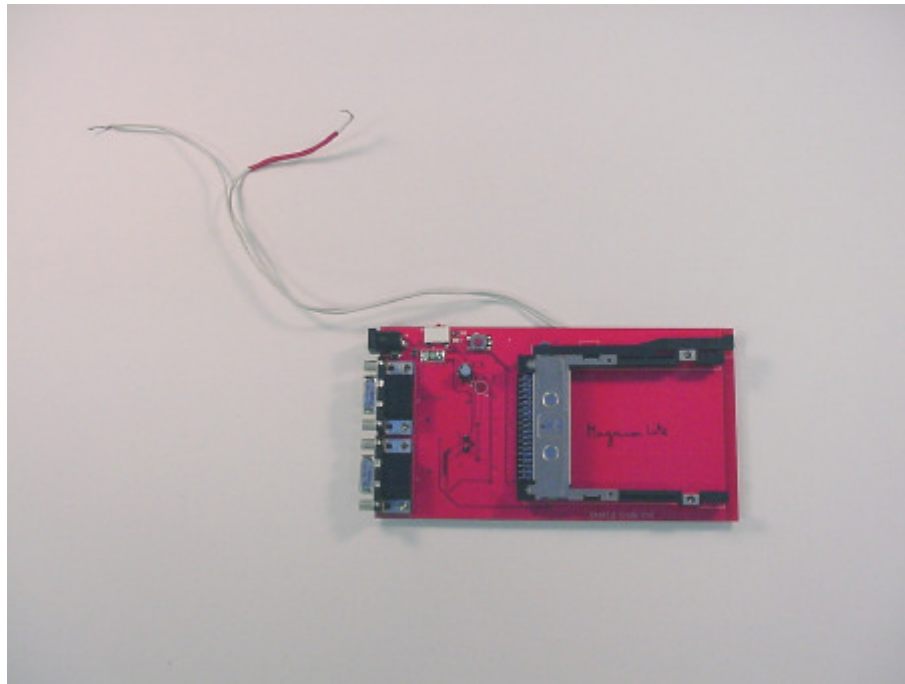
Picture 2 : EUT (topside, without housing)



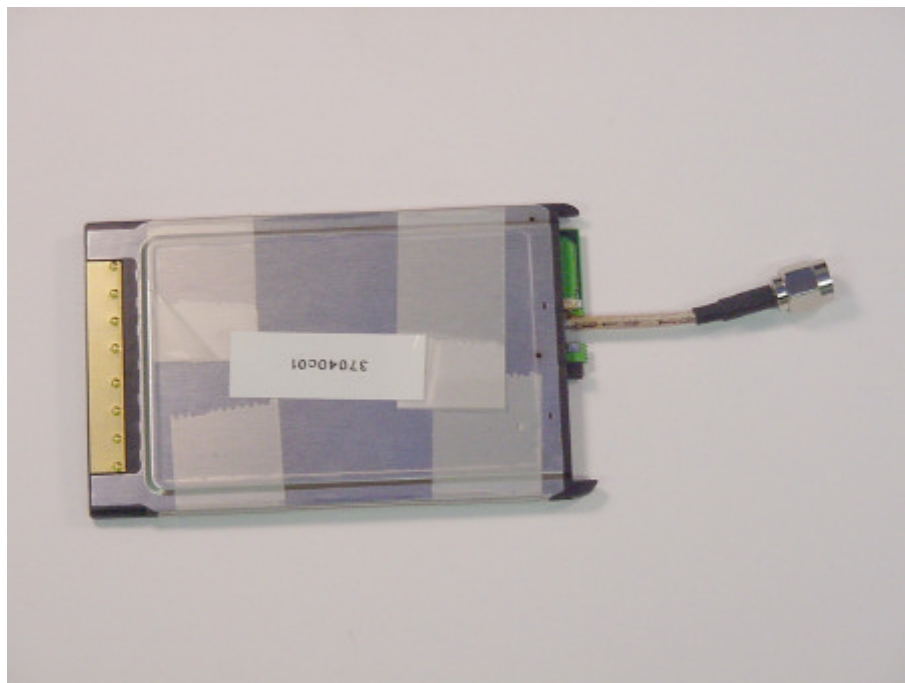
Picture 3 : EUT (bottom side, without housing)



Picture 4 : Setup for radiated measurements (EUT in the Laptop)



Picture 5 : Test Cradle (AUX 2)



Picture 6 : EUT with temporary SMA antenna connector