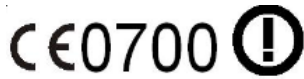


GI0643



FCC ID NCMOGI0643

Safety & Certification Leaflet

Your iCON XYfi is like a mobile phone

Your iCON XYfi uses the same technology as a mobile phone. It is important that you always obey all safety regulations related to mobile phone use. If you have any doubt about the safe operation of your iCON XYfi you should remove the iCON XYfi from the PC and seek advice from authorized personnel.

Handle with care

This device is designed to be plugged directly into the USB port of a computer, however, every precaution should be taken to avoid stress on the device should the computer be lifted, moved, relocated or packaged. Should regular movement of this nature be envisaged, an extender cable (sometimes supplied with the device) should be used so as to avoid damage to the device. It should be noted that any damage sustained as a result of the aforementioned mishandling will be regarded as "User Damage" and shall render the product warranty null and void

1. Safety Measurements

Please read the following guidelines carefully. Not following these guidelines can cause harm to the USB stick, yourself or other persons.

1.1 General recommendations for use

- Always treat your product with care and keep in a clean and dust-free place. Do not expose your product to open flames or lit tobacco products.
- Do not expose to liquid, moisture or humidity. Do not expose the iCON XYfi to rain or other liquids.
- Do not drop, throw or try to bend your product.
- Do not paint your product.
- Do not attempt to disassemble your product. Doing so may be dangerous and it will void the warranty.
- Do not touch the antenna unnecessarily. (This is located either inside the product or as an external antenna.)

1.2 Traveling: Handle the USB stick with care while traveling. It is recommended to remove the USB stick from the laptop.

1.3 Ambient temperatures: Do not expose the iCON XYfi or the antenna to ambient temperatures beyond the range of 0 and +40 degrees Celsius.

1.4 Explosive atmosphere: Turn off your PC in any area with a potentially explosive atmosphere. It is rare, but your PC could generate sparks, which could cause an explosion or fire. Areas with a potentially explosive atmosphere are not always clearly marked. They include fuelling areas (petrol filling stations), below deck on boats, fuel or chemical transfer or storage facilities and areas where the air contains chemicals or particles, such as grain, dust, or metal powders. Do not transport or store your PC and accessories in the compartment of a vehicle which contains flammable gas, liquid or explosives.

1.5 Blasting areas – construction sites: Turn off your PC when in a blasting area in order to avoid interfering with two-way radios used in blasting operations.

1.6 Do not use on aircraft: Using a wireless devices on aircraft can cause interference and is illegal. Remove your iCON XYfi if you intend to use your PC whilst in an aircraft. Do not use it when the plane is on the ground without permission from the aircraft crew.

1.7 Do not use in hospitals: Please ensure you follow any local regulations or rules. People are often asked to switch off all electronic devices in some areas of a hospital. This is a recommendation that Option® fully supports. Using the iCON XYfi close to sensitive electronic devices could possibly result in interference. If you intend to use your PC in such areas, you must remove the iCON XYfi.

1.8 Interference from radio signals: Option® relies on advice from health authorities and relevant expert bodies about potentially undesirable reactions to radio emissions from the iCON XYfi.

1.9 Immunity to interference: Electromagnetic interference is the disturbance of the normal operation of a device due to its response to radio signals from an external source. Occasionally, in some situations you may hear short sounds coming from audio equipment such as radio or multimedia PC. However, these audible signals do not interfere with the operation of the equipment.

The Directive from the European Commission (2004/108/EC) governing all forms of electronic equipment concerns interference that such equipment produces, and its immunity to interference from outside. Any equipment compliant with that directive is unlikely to suffer interference. All wireless devices may get interference which could affect performance.

1.10 Cardiac pacemakers, implanted defibrillators & other medical implant devices

It is possible that the iCON XYfi may interfere with some types of pacemakers or implanted defibrillators when operated close to the implanted device. You should seek advice from your doctor that is specific to the implant before using the iCON XYfi. Health authorities in many countries have set up advisory services for medical devices and implants including providing advice about maintaining separation distance between the mobile device or other radio frequency equipment and the implant. Option® operating companies reflect the advice given by their relevant health authority or national advisory service, and as a minimum recommend a separation distance of at least 20 cm between the iCON XYfi or other radio frequency terminal equipment and the embedded device.

1.11 Hearing devices: People with hearing aids or other cochlear implants may experience interfering noises when using mobile devices or when one is nearby. The level of interference will depend on the type of mobile device, the type of hearing device and the distance between the two. Increasing the distance between the iCON XYfi and hearing device may reduce interference.

1.12 Children: Do not allow children to play with your iCON XYfi . They could hurt themselves or others, or could accidentally damage the iCON XYfi . Your iCON XYfi contains small parts with sharp edges that may cause an injury or which could become detached and create a choking hazard.

1.13 Driving: The driver shall NOT use the iCON XYfi while driving. Park the vehicle first.

1.14 SIM cards: To protect against damage from electrostatic discharge (ESD) do not touch the SIM card connectors. As a precaution, always make sure that the iCON XYfi is already in your hand before you insert or remove the SIM card.

1.15 Accessories: Only use Option® approved accessories. Do not connect with incompatible products. When used with accessories, Option® can only guarantee safe and correct operation of our products if the accessories are tested and approved by us.

1.16 Safe distance: The iCON XYfi has been thoroughly tested to comply with SAR requirements. These tests simulate the absorption by the human body of radiation from the iCON XYfi.

This device complies with the SAR regulation as stated by the FCC.

The measurements were made according to the Supplement C to OET Bulletin 65 of the Federal Communications Commission (FCC) Guidelines [OET 65] for evaluating compliance of mobile and portable devices with FCC limits for human exposure (general population) to radiofrequency emissions. The device was tested in all applicable USB orientations with a separation of 5 mm to the flat phantom.

This device complies with the SAR regulation as stated by the European Council Recommendation. The device was tested in all applicable USB orientations with a separation of 5 mm to the flat phantom. The SAR limit as defined by the European Council Recommendation is 2.0 W/kg for a mass of 10g (European Council Recommendation 1999 519 EC), based upon ICNIRP guidelines. Details are available upon request.

For day-to-day use we would advise the user to keep a minimum distance from the antenna of 20 cm.

Users concerned with the risk of Radio Frequency exposure may wish to limit the duration of their calls and to position the antenna as far away from the body as is practical.

2. Certification requirements

The FCC ID can be found on the label underneath the bottom cover.

2.1 Federal communications commission notice

This equipment has been tested and found to comply with the limits for a Class B digital device, pursuant to Part 15 of the FCC Rules. These limits are designed to provide reasonable protection against harmful interference in a residential installation. This equipment generates, uses and can radiate radio frequency energy and, if not installed and used in accordance with the instructions, may cause harmful interference to radio communications. However, we cannot guarantee that interference will not occur in a particular installation. If this equipment does cause harmful interference to radio or television reception, which can be determined by turning the equipment off and on, the user is encouraged to try to correct the interference by one or more of the following measures:

- Reorient or relocate the receiving antenna.
- Increase the separation between the equipment and receiver.
- Connect the equipment into an outlet on a circuit different from that to which the receiver is connected.
- Consult the dealer or an experienced radio or television technician for help.
- Don't co-locate the device near to any other transmitters.

2.2 Modifications

The FCC requires the user to be notified that any changes or modifications made to this device that are not expressly approved by Option®, could void the user's authority to operate the equipment.

This device complies with Part 15 of the FCC rules.

This device complies with Part 15 of the FCC rules. Operation is subject to the following two conditions:

- (1) This device may not cause harmful interference, and
- (2) This device must accept any interference received, including interference that may cause undesirable operation.

2.3 Exposure Information to Radio Frequency Energy

Users concerned with the risk of Radio Frequency exposure may wish to limit the duration of their calls and to position the antenna as far away from the body as is practical.

2.4 Wireless LAN France

For 2.4GHz wireless LAN operation of this product, certain restrictions apply. This equipment may use the entire 2400 to 2483.5MHz frequency band (channels 1 through 13) for indoor applications. For outdoor use, only 2400 Mhz to 2454MHz frequency band (channels 1-9) may be used. For the latest requirements, see <http://www.art-telecom.fr>.

2.5 System requirements

- USB 2.0 slot
- Must be supplied by a SELV (Safety Extra Low Voltage) circuit with limited power.

2.6 Manufacturer's disclaimer statement

The information in this document is subject to change without notice and does not represent a commitment on the part of the vendor. No warranty or representation, either expressed or implied, is made with respect to the quality, accuracy or fitness for any particular purpose of this document. The manufacturer reserves the right to make changes to the content of this document and/or the products associated with it at any time without obligation to notify any person or organization of such changes. In no event will the manufacturer be liable for direct, indirect, special, incidental or consequential damages arising out of the use or inability to use this product or documentation, even if advised of the possibility of such damages.

For questions regarding your product or declaration, contact:

Option | Gaston Geenslaan 14 | 3001 Leuven | Belgium | www.option.com



To identify this product we refer to the Part, Series or Model number found on the product.