



# AT&T USBConnect Quicksilver

## Getting Started Guide



This page is intentionally left blank

○ ○  
○ ○ P T I O N  
○ ○

## Welcome to AT&T

Thank you for purchasing the AT&T USBConnect Quicksilver.

Please use either this Getting Started Guide or our web tutorial available at **[att.com/WirelessTutorials](http://att.com/WirelessTutorials)** for the most complete and up-to-date information available for setting up your device.



# Table of Contents

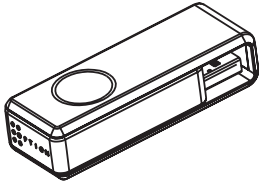
<b>What's in the box?</b>	<b>5</b>
<b>Getting started</b>	<b>6</b>
<b>Follow the steps below</b>	<b>7</b>
1. Insert the SIM Card and connect the Quicksilver	7
2. Install the software	8
3. Connect to the AT&T Network	9
<b>AT&amp;T Communication Manager</b>	<b>10</b>
Using AT&T Communication Manager	11
<b>Using AT&amp;T Communication Manager for Wi-Fi</b>	<b>13</b>
To use AT&T Wi-Fi service	13
To connect to other Wi-Fi networks	14
<b>Getting to know your device</b>	<b>15</b>
<b>Reassembling the Quicksilver</b>	<b>16</b>
<b>Frequently Asked Questions</b>	<b>17</b>
<b>Finding more information</b>	<b>20</b>

○ ○  
○ ○ P T I O N  
○ ○

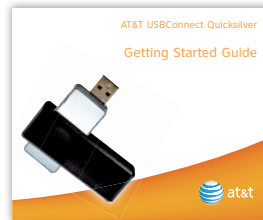
## What's in the box?

Your package contains 2 items:

- AT&T USBConnect Quicksilver



- Getting Started Guide



## Getting started

To get started, you need about 15 minutes and the following:



### AT&T USBConnect Quicksilver

The Quicksilver sends and receives data between your laptop and the AT&T network.

The Quicksilver includes the necessary software for your Windows laptop and will begin to auto-install when inserted for the first time. Mac users see page 8 before installing.



### SIM Card

The SIM card stores the wireless number for your Quicksilver and your subscriber information enabling access to the AT&T network.

Follow the easy steps for Windows Vista, XP and 2000 laptops on the next page.

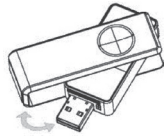
### Warning:

The Quicksilver device should be used with the LED indicator lights facing up or to either side for best performance and safety. If trying to use the device with the LED indicators facing down, the user should maintain a distance of at least  $\frac{1}{2}$  of an inch (12,7 mm) between the device and the user's body.

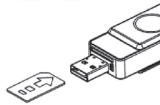
○ ○  
○ **O P T I O N**  
○ ○

## Follow the steps below

### 1. Insert the SIM card and connect the Quicksilver (about 2 minutes)



- Open the Quicksilver by swiveling the cap to the right or left.
- Peel away the pull tab that extends over the USB connector from the bottom of the device.
- Use the pull tab to pull the dummy SIM from the slot.



- Insert the SIM into the slot directly above the USB connector.
- The notched portion of the SIM should go into the device first and be positioned towards the back end of the device.
- Gently push the SIM card completely into the slot until it clicks into place and is fully inserted.



- Inserted properly



- Not inserted properly

- Insert the Quicksilver into the laptop



## 2. Install the software (about 10 minutes)

### Windows Vista, XP and 2000

AT&T Communication Manager (ACM) supports laptops with Microsoft Windows Vista, XP and 2000 and allows you to control how and when you connect to wireless networks. ACM will auto-install the first time you insert your Quicksilver into your laptop and then be available whenever needed.

- Carefully push the Quicksilver into the USB port on your laptop.
- After you insert the Quicksilver into a laptop for the first time, the ACM software will automatically start and guide you through the installation process.
- Once installation is complete, restart your laptop when prompted.

### Mac OS

When Quicksilver is inserted into your Mac power book, it will automatically install the GlobeTrotter Connect (GT Connect).

Requires Mac OS Versions: 10.3.9, 10.4.11, 10.5 and above

- Check the version of your Mac OS before you install GT Connect.
- Carefully insert the Quicksilver into the USB port on your Mac book.
- After you insert the Quicksilver into the Mac book for the first time, GT-Connect will automatically start and guide you through the installation process.

○ ○  
○ **O** P T I O N  
○ ○



### 3. Connect to the AT&T Network (about 3 minutes)

#### Windows Vista, XP and 2000



- Double click on the ACM icon on your desktop.
- Wait while the Quicksilver initializes.
- Click the Connect button when it turns orange.
- Open your browser and access the Internet.
- Once connected, the “Connect” button will change to “Disconnect” to allow you to end your session.

#### Mac OS

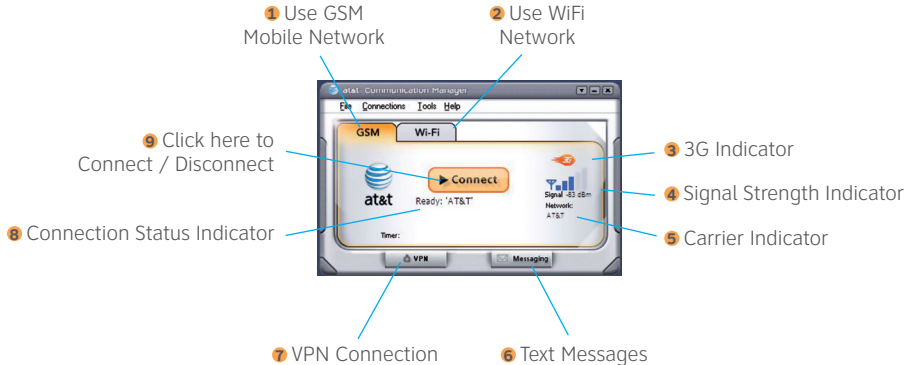


- Double click on the GlobeTrotter Connect icon on your desktop.
- Wait while the Quicksilver initializes.
- Click the Connect button when it is active.
- Open your browser and access the Internet.
- Once connected, the “Connect” button will change to “Disconnect” to allow you to end your session.



# AT&T Communication Manager

Communication Manager is a software application that lets you control your connections to either the AT&T mobile network nationwide using the Quicksilver or to available Wi-Fi networks including thousands of AT&T Wi-Fi hotspots using your laptop's built in Wi-Fi capability. ACM offers tools to manage those connections, find the best connection available and make that connection quickly. Please note that connections to the AT&T mobile network and AT&T hotspots require that Quicksilver be inserted into the laptop and that the device has an active SIM and a valid rate plan.



OPTION

# Using AT&T Communication Manager

## 1 GSM Mobile Network

The GSM interface allows you to control your connection to mobile networks worldwide.

## 2 Wi-Fi Network

The Wi-Fi interface allows you to control your connections with your laptop to Wi-Fi networks, including home, office, and AT&T public hotspots.

## 3 3G Indicator

This indicator appears when the AT&T 3G network is available. AT&T 3G networks are available in almost all major metro areas and provide the highest data transfer rates. When 3G networks are not available, Quicksilver will automatically select EDGE (also known as 2G) networks.

## 4 Signal Strength Indicator

This indicator shows the strength of the wireless signal that you are receiving.

## 5 Carrier Indicator

This indicator shows which wireless network your device is associated with. For example, if you are connected to AT&T's mobile network, the wireless carrier indicator will read "AT&T".

## 6 Text Message

Click this button to read and write text messages using ACM. Messages will be sent and received using your Quicksilver wireless number. Please note that text messaging charges will apply.

*continued on next page*



### 7 VPN Connection Button

If you have configured ACM to launch your Virtual Private Network (VPN), you may use this button to launch your VPN client. VPN connections can be configured in the VPN tab of the Settings window.

### 8 Connection Status Indicator

When this indicator reads “Ready”, simply click the orange “Connect” button to connect to a wireless network. When this indicator reads “Connected”, you have an active session with a wireless network. This indicator may also display error messages if there is a problem with your connection.

### 9 Connect / Disconnect Button

To connect to the network shown in the Carrier Indicator, click the orange Connect button. When this button reads “Disconnect”, you have an active session with a wireless network and may click the button to disconnect from the network.

○ ○  
○ O P T I O N  
○ ○

## Using AT&T Communication Manager for Wi-Fi



If your laptop has an internal Wi-Fi modem or Wi-Fi capability, AT&T Communication Manager can be used to manage your connection to home, business, or AT&T hotspots. Please note that connection to AT&T hotspots requires a qualified AT&T DataConnect service plan. See [www.att.com/laptopconnect](http://www.att.com/laptopconnect) for eligibility details.

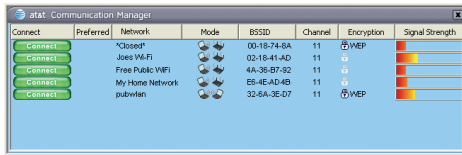
### To use AT&T Wi-Fi service:

1. Insert your Quicksilver and launch ACM.
2. ACM will automatically identify available Wi-Fi networks. Click “Connect” when prompted to connect to an AT&T hotspot. ACM will take a moment to establish your connection.
3. After ACM confirms a connection is established, launch your browser, email application or other Internet application.



## To connect to other Wi-Fi networks:

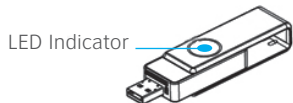
1. Launch ACM (you do not need to insert your Quicksilver).
2. ACM will automatically identify available Wi-Fi networks.
3. To see the list of available networks, click on the “xx Wi-Fi networks available” (below the Connect button).
4. Select the network you prefer and click “Connect”.








5. If the network is secure or encrypted, you may be prompted to enter additional information for access.
6. After ACM confirms a connection is established, launch your browser, email application or other Internet application.



## Getting to know your device



The LED Indicator provides visual confirmation of the device's status. See the table below for more information.

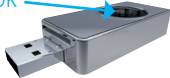
LED Indicator	Indicates
 Fast Blinking	Powering Up
 Solid	Acquiring 3G Network connection
 Slow Blinking	Connected to 3G Network
 Solid	Acquiring EDGE Network connection
 Slow Blinking	Connected to EDGE Network



## Reassembling the Quicksilver

In the event that the Quicksilver is dropped onto a hard surface, the swivel may disassemble upon impact. The disassembly is intended to prevent permanent damage to the device. Please follow the instructions below to reassemble the swivel and return the device to normal operation.

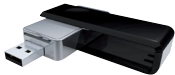
SNAPHOOK



The swivel may have been released from the main body. This image shows the body of the Quicksilver without the swivel. Turn the snaphooks within the body so that they are at the 90° or 180° position.



Gently pull the end of the swivel open by approximately  $\frac{1}{8}$  of an inch on each end in order to slide it over the body.



When sliding the swivel into place, turn the swivel into a 90° or 180° position.



Once the swivel is positioned over the snaphook, gently press the swivel inwards.

OPTION



## Frequently Asked Questions

### **How do I find my wireless number?**

If you have ACM open, go to the Help menu and select My Wireless Number. You can also find your wireless number on your sales receipt and monthly statements.

### **What do I do if ACM says “No SIM”?**

Remove the Quicksilver from the computer and insert your AT&T SIM card. See page 6 for details. If you do not have a SIM card, contact AT&T.



This page is intentionally left blank

○ ○  
○ ○ P T I O N  
○ ○

Microsoft and Windows are either registered trademarks or trademarks of Microsoft Corporation in the United States and/or other countries. All other brand or product names are or may be trademarks of, and are used to identify products or Services of, their respective owners. ©2008 AT&T Intellectual Property. All rights reserved. AT&T and the AT&T logo are trademarks of AT&T Intellectual Property.



## Finding more information

### On the Web

Interactive web tutorials are available at [att.com/WirelessTutorials](http://att.com/WirelessTutorials). Select Manufacturer: Option and Model: Quicksilver from the drop down menus.

Detailed support information including device specifications, troubleshooting, user forums and knowledgebase articles are available at [att.com/DeviceSupport](http://att.com/DeviceSupport).

### From a Phone

Call AT&T Customer Care at 800-331-0500 for assistance with your device or service.

Please enter the 10-digit wireless phone number associated with your AT&T Quicksilver when prompted by the automated system. This will ensure you get routed to a specialized customer care team.

### The wireless phone number associated with your Quicksilver can be found:

- On your sales receipt,
- On your monthly statement, or
- In ACM under the Help menu select My Wireless Number.

*Note: You must have the Quicksilver inserted into your laptop to find your wireless number.*

