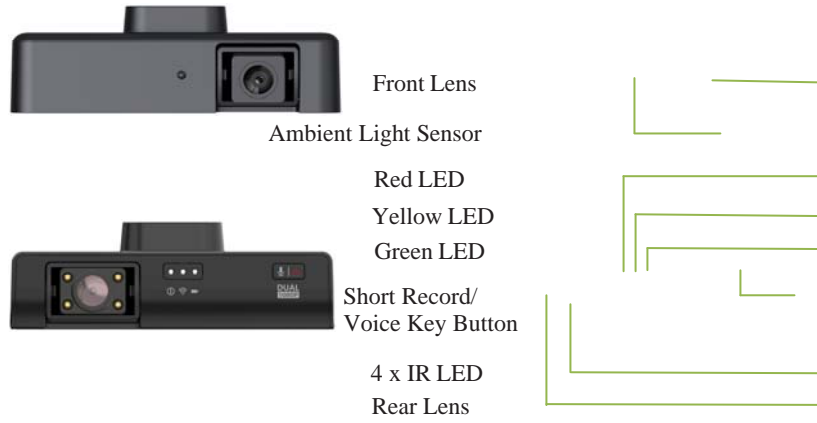




VIA Mobile360 D700
User Manual

1. Overview



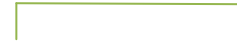
***Note:** The lens can be rotated within a certain range, but it should not be rotated violently, otherwise it will cause the rotating mechanism to fail.



Speaker



Power Connector



Micro SD Card Slot



Micro SIM Card Slot

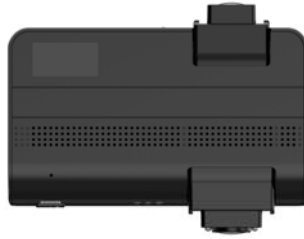


Micro USB connector





Pedestal



Mic



1.1 Specifications

Item	Description
Processor	800MHz ARM Cortex-A53 Dual-core
System Memory	512MB DDR3L DRAM
Internal Storage	128MB SPI Flash
Wireless	AMPAK AP6255 (802.11 a/b/g/n/ac +BT4.2) Ublox GPS receiver
4G/3G	Quectel EC25-AF FDD: B2/B4//B5/B12/B13/B14/B66 WCDMA: B2/B4/B5
Field of View	FOV: D=116°, H=100°, V=56°
Sensor	Sony IMX307
Image Resolution	1920x1080p @ 29 FPS
IO	1x Micro SD Card(200GB max) 1x Micro SIM card slot 1x Micro USB connector(for debug only)
Power Supply	9-36V DC
Dimensions	124.5mm x 41.25mm x 95.6mm

2. Getting Started with your Recorder

VIA Mobile360 D700 supports Android phones and iPhone connections. The driving recorder supports automatic video recording to SD card after startup, and can be played back in mobile App. To use this feature, you need to insert a SD card into the driving recorder. The recorder needs to communicate with the cloud through 4G network to support remote wake-up, and two way audio communication. To use this function, you need to insert a SIM card into the recorder.

Insert SD Card or SIM Card: When inserting a SD card or SIM card, use your fingernail to press the card into the driving recorder. When it is fully inserted, the card will snap into the slot. To remove the card, use your fingernail to gently press the card into the driving recorder and it will pop up, allowing you to remove it.

***Note:** It supports up to 200G SD card and must be formatted into FAT32 file system. Please confirm The SIM can connect to internet. The SIM card does not support hot plug.

2.1 Power On, Off and LED States

Manual startup and shutdown: When using DC power adapter and 12-pin power connector (with Power On/Off switch) to connect the recorder; please press the switch manually to switch on and off the recorder.

Automatic startup and shutdown: When using the 12-pin power connector to 12V/5A Car plug power adaptor or 12-pin power connector to OBD II Connector and ACC to bullet plug cable connect the recorder, the recorder will start automatically when the car starts (ACC is on).

LED States: LED indicator states as shown below:



2.2 Connect with CAN bus

The recorder supports connecting the CAN bus of the car, and can read the driving speed and fuel consumption from the CAN bus. When using the app connects the recorder, you can view information such as driving speed and fuel consumption of the journey. You can connect the CAN bus in the following ways.

Connect the CAN bus through the OBD II line: use the OBD II connection line in the accessories to connect the vehicle's OBD and the recorder's wiring port.

Connect via OBD II Bluetooth: TBD.

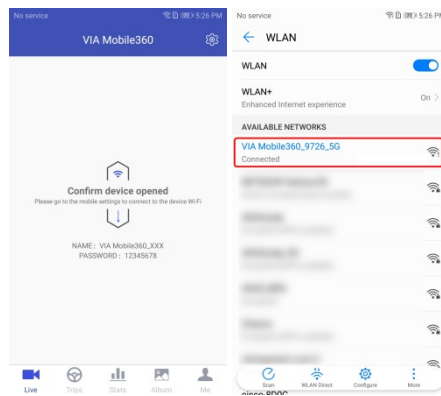
2.3 Using Your Recorder with a phone

The driving recorder supports connecting with Android phone and iPhone. In order to use your recorder, installation of the official VIA Mobile360 App is required. You can scan the QR code below to download and install the VIA Mobile360 App. App for Android is also supplied on Google Play Store.



***Note:** Android 5.0 or iOS 9.0 above is required.

Connect Driving Recorder: Once the VIA Mobile360 App has been installed on your phone, open the app and follow the prompts to connect the recorder's Wi-Fi named by "VIA Mobile360_XXX" in the phone's WLAN setting. The default password is 12345678.



After connecting to the recorder's Wi-Fi, return to the VIA Mobile360 App. The app has established a connection with the recorder shown as below.



3. VIA Mobile360 App Menu

VIA Mobile360 App has the following menu:

Live: View the live stream and GPS tracks of the recorder;

Trips: View or download the trips on App;

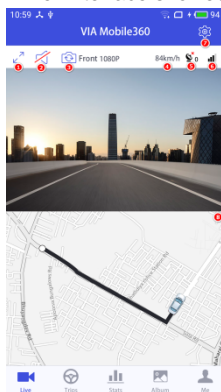
Stats: Statistics about the driving status of the vehicle during the trip;

Album: View the videos in the SD card of the device and download the videos locally to the mobile phone.

Me: Setting maps and checks the app version.

3.1 Live

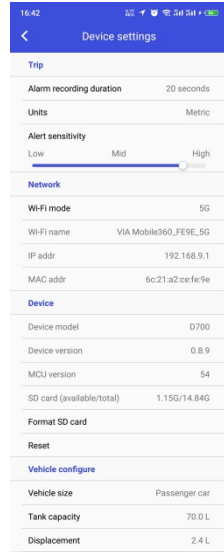
The "Live" interface showed as below:



- ①:Full screen;
- ②:Mute button;
- ③:Lens switch button;
- ④:Speed display;
- ⑤:GPS signal;
- ⑥:4G network signal: If there is no signal or the SIM card cannot access the Internet, the map will not be displayed.
- ⑦:Device Settings: Configuring the recorder parameters;
- ⑧:Map;

3.1.1 Device Settings

Click the “Device Settings” button on the live interface to enter the device settings interface and configure the recorder parameters.



Trip: Set the alarm recording duration (10 seconds/20 seconds/30 seconds), units display (Metric/Imperial) and alert sensitivity;

Network: Switch the recorder's Wi-Fi mode (need to reconnect after switching 2.4G/5G) and display the network information of the device.

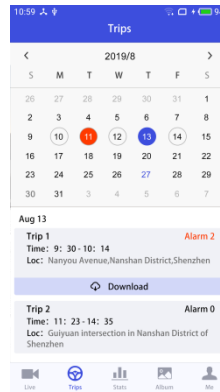
Device: Displays the device model, device version, SD card capacity, format SD card, and reset.

Vehicle Configure: Set vehicle size, tank capacity and displacement;

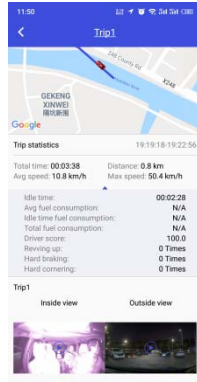
Alert Sensitivity and Alarm Recording Duration: Set the alert sensitivity during vehicle driving. When the recorder detects that the G-Sensor value exceeds the threshold, it will record an alarm video. The length of the alarm video will depend on the value of the alarm recording duration.

3.2 Trips

When the driving recorder is turned on, it begins to record a trip until the recording of the trip ends when the device is turned off. In the "Trips" interface, you can view and download the trip by date. A red mark in the calendar indicates that a collision alert has occurred during this date.

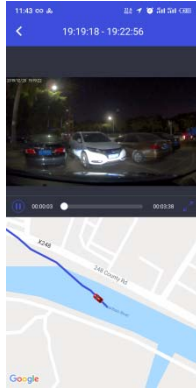


Click "Download" to download the trip to your phone locally. Click on the trip to enter the trip details screen. The trip details show the GPS map trajectory, the trip video, the collision alert video and other information of the trip.



***Note:** When the CAN bus is not connected, the App will not be able to display the fuel consumption information.

Click on the trip video to play back.



***Note:** You will not be able to switch to live streaming when you download a trip.

3.3 Stats

The “Stats” interface can query the trip information within a certain period of time by date or date range. The “Stats” interface is shown as below.



3.4 Album

The album interface can play back or download the videos in the SD card of the device, including "Normal", "Collision", "Short Cut". Click on the video file to play back the video. Click the "Select" button on the upper right corner to select the video, then click the download icon "📄" to download it to the mobile phone. The downloaded video will display in the "Local".



Normal Video: When the recorder is turned on, it will automatically record to the SD card and record a file every 3 minutes. When the SD card runs out of space, the device will automatically delete the earliest video file and record in a cyclic manner. It can be viewed in the list of "Normal" in the Album of VIA Mobile360 App.

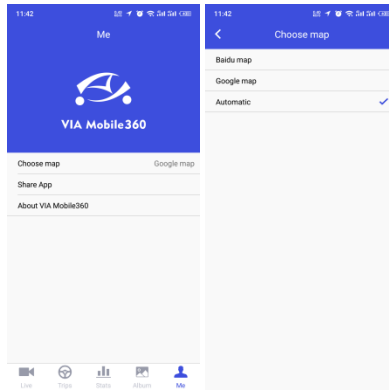
Collision Video: When the recorder detects that the G-Sensor value exceeds the threshold of alert sensitivity, an alarm video will be recorded. The length of the alarm video will depend on the value of alarm recording duration.

Short Cut Video: You can record an emergency video by short pressing the "Short Video" button on the recorder. It will record a 20-second video (the first 10 seconds and the last 10 seconds when the button is pressed). You can view it in the "Short Cut" list in the App album.

Local Video: Select the video file from the "Normal", "Collision", "Short Cut" video list of the album and click the download icon "⬇️" to download it to the mobile phone. The downloaded video is displayed in "Local".

3.4 Me

In the “Me” interface you can switch maps, share the App to friends and view the current App version. The “Me” interface is shown as below.



4. Firmware Update

When you connect your recorder to your phone through the VIA Mobile360 App, it will automatically detect the latest firmware and prompt you when a new firmware upgrade is available. You can also check the firmware update manually in Device settings page of VIA Mobile360 App. If you accept to install the firmware upgrade, the recorder will download the upgraded firmware to the SD card, and automatically restart to enter the upgrade process. After entering the upgrade process, the firmware will be upgraded first, the LED green light will always be on and the red light will flash. After firmware has been upgraded, it will restart to enter the MCU upgrade, the LED red light will always be on and the green light will flash. After the firmware and MCU are upgraded, the recorder automatically restarts to exit the upgrade process and return to normal working state.

***Note:** SIM card and SD card need to be inserted into the recorder. When upgrading, the upgrade package needs to be downloaded to SD card online. Please do not power down during the upgrade process.

FCC Regulations

This device complies with part 15 of the FCC Rules. Operation is subject to the following two conditions: (1) This device may not cause harmful interference, and (2) this device must accept any interference received, including interference that may cause undesired operation.

This equipment has been tested and found to comply with the limits for a Class B digital device, pursuant to part 15 of the FCC Rules. These limits are designed to provide reasonable protection against harmful interference in a residential installation. This equipment generates, uses and can radiate radio frequency energy and, if not installed and used in accordance with the instructions, may cause harmful interference to radio communications. However, there is no guarantee that interference will not occur in a particular installation. If this equipment does cause harmful interference to radio or television reception, which can be determined by turning the equipment off and on, the user is encouraged to try to correct the interference by one or more of the following measures:

Reorient or relocate the receiving antenna.

Increase the separation between the equipment and receiver.

Connect the equipment into an outlet on a circuit different from that to which the receiver is connected.

Consult the dealer or an experienced radio/TV technician for help.

 CAUTION:

Changes or modifications not expressly approved by the manufacturer could void the user's authority to operate the equipment.

The antenna(s) used for this transmitter must not be co-located or operating in conjunction with any other antenna or transmitter

This equipment complies with FCC radiation exposure limits set forth for an uncontrolled environment. This equipment should be installed and operated with minimum distance 20cm between the radiator & your body. Operations in the 5.15-5.35GHz band are restricted to indoor usage only