

GAT ECO.Lock and XS4 ECO.Lock

E2438

GAT ECO.Lock 7102 NW F/ISO, GAT ECO.Lock 7102 NW F/ISO ICLS and LM100

Product marking

Version	Date	Changes	Author
1.0	14/11/2023	First edition	U.T, M.J

Table of contents

1 GAT ECO.Lock 7102 NW F/ISO 3

Trademark 3

Label 3

2 GAT ECO.Lock 7102 NW F/ISO ICLS 4

Trademark 4

Label 4

3 LM100 5

Trademark 5

CE type 5

Label 6

This equipment contains several markings to ensure traceability and fulfilment of the marking requirements established by international regulations.

In this product, the marking information is divided into three categories: trademark, CE type and label. The information contained slightly varies for each electronic model.

1 GAT ECO.Lock 7102 NW F/ISO

Trademark

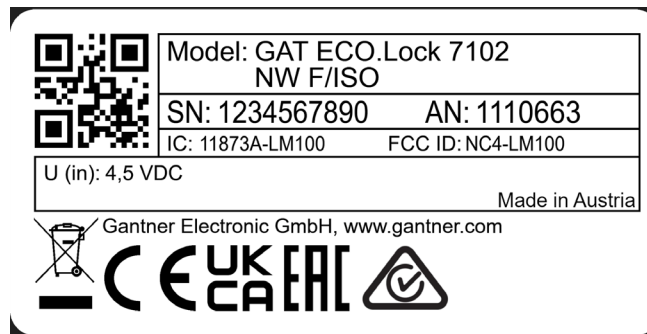
The manufacturer's name, GANTNER, is marked on the external part of the lock. The trademark is visible to the final user.



Label

The label is located on the backside of the lock. The label contains the following information:





2 GAT ECO.Lock 7102 NW F/ISO ICLS

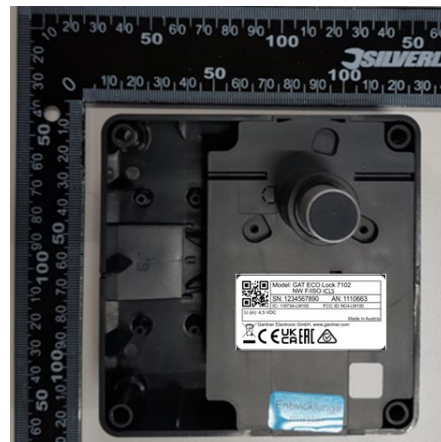
Trademark

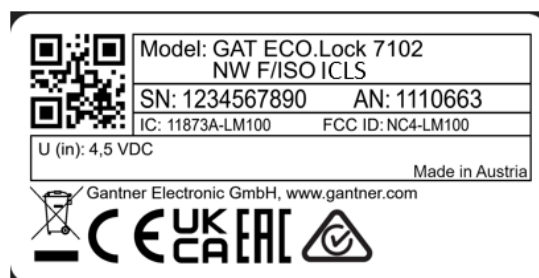
The manufacturer's name, GANTNER, is marked on the external part of the lock. The trademark is visible to the final user.



Label

The label is located on the backside of the lock. The label contains the following information:





3 LM100

Trademark

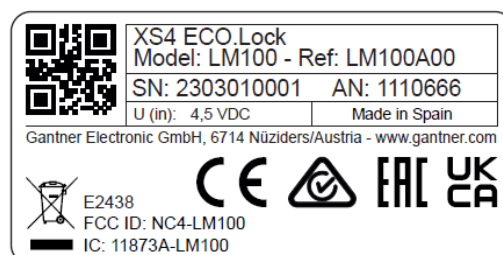
The manufacturer's name, GANTNER, is marked on the external part of the lock. The trademark is visible to the final user.



CE type

The CE type reference of this equipment is E2438 and it is marked on the label which is located on the backside of the lock.

This item number is used as an identifier on the EU Declaration of Conformity. Together with the electronic model LM100 is used for the traceability of the equipment.



Label

The label is located on the backside of the lock. The label contains the following information:

