

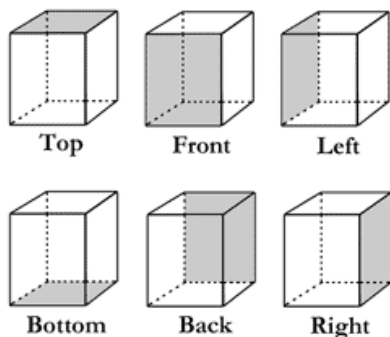
# Internal photos – GAT Eco.Lock 7100 NW F/ISO

## Content

1	View of EUT .....	1
2	Equal types .....	1
3	GAT Eco.Lock 7100 NW F/ISO .....	2
3.1	Overview .....	2
3.2	PCB Bottom View (all types).....	2
3.3	PCB Top View (GAT Eco.Lock 7100 NW F/ISO + GAT Eco.Lock 7150 NW F/ISO) .....	3
3.4	PCB Top View (GAT Eco.Lock 7100 F/ISO + GAT Eco.Lock 7150 F/ISO) .....	3
3.5	PCB in Housing (all types).....	4
4	History.....	4

## 1 View of EUT

Sides of EUT are as perspective described below.



## 2 Equal types

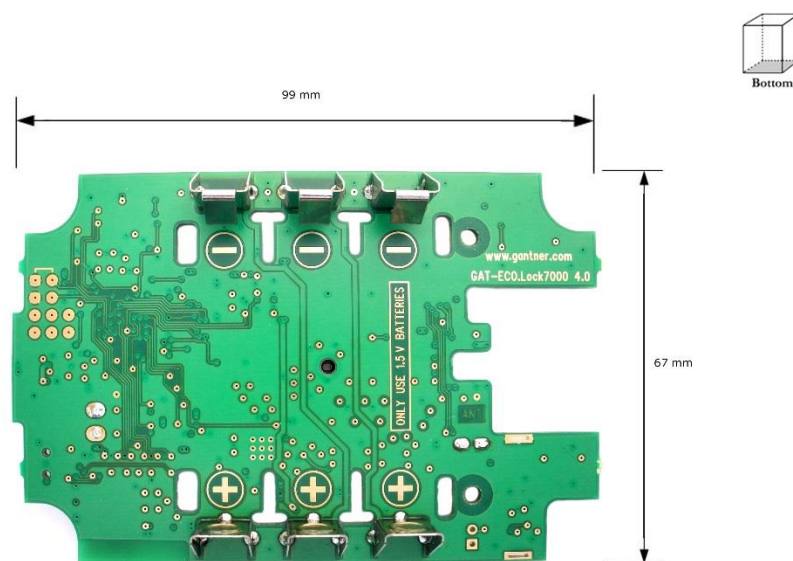
Pos	Description	Info
1	GAT Eco.Lock 7100 NW F/ISO	Main product
2	GAT Eco.Lock 7150 NW F/ISO	Same as Pos 1., but with painted pcb
3	GAT Eco.Lock 7100 F/ISO	Same as Pos 1., but without Bluetooth Chip
4	GAT Eco.Lock 7150 F/ISO	Same as Pos 3., but with painted pcb
5	GAT Demo Locker ECO.Lock 7100 NW F/ISO	Pos 1. Mounted in Demo Locker made of timber, with 2 test cards
6	GAT ECO.Lock 7100 NW F/ISO Demo Kit	Pos 1., with test data carriers mounted on holder

### 3 GAT Eco.Lock 7100 NW F/ISO

#### 3.1 Overview

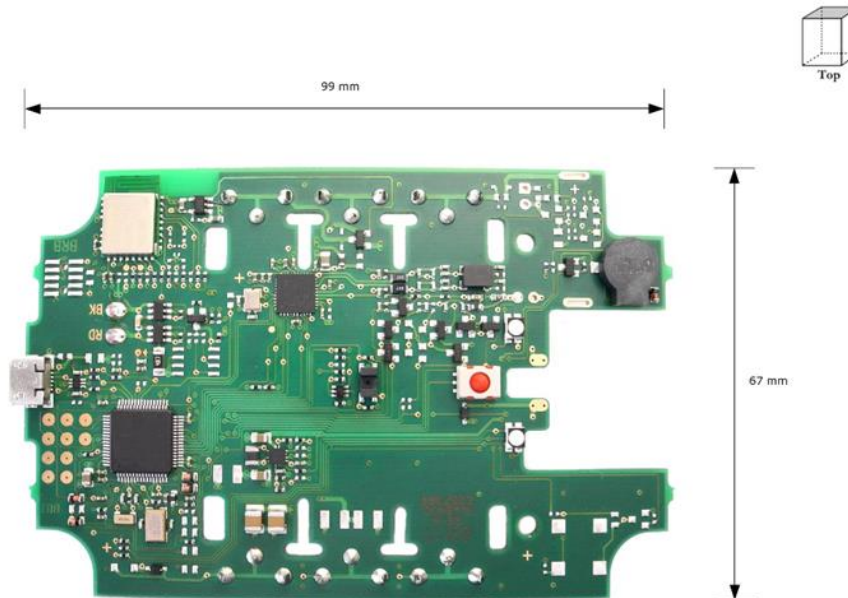


#### 3.2 PCB Bottom View (all types)

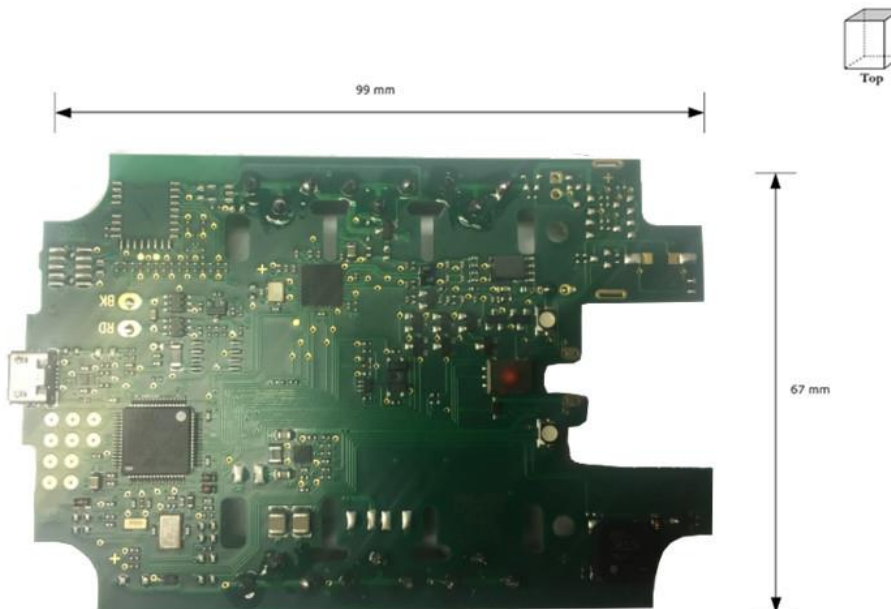


## Internal photos – GAT Eco.Lock 7100 NW F/ISO

### 3.3 PCB Top View (GAT Eco.Lock 7100 NW F/ISO + GAT Eco.Lock 7150 NW F/ISO)

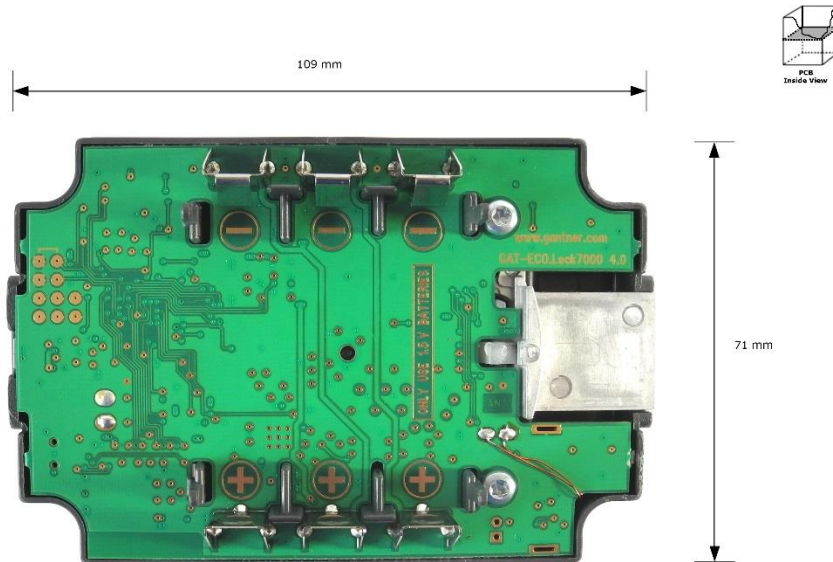


### 3.4 PCB Top View (GAT Eco.Lock 7100 F/ISO + GAT Eco.Lock 7150 F/ISO)



## Internal photos – GAT Eco.Lock 7100 NW F/ISO

### 3.5 PCB in Housing (all types)



## 4 History

Version	Author	Description	Tested by	Released on
1.0	Jochum M.	First Version	Jochum M.	30.01.2018