

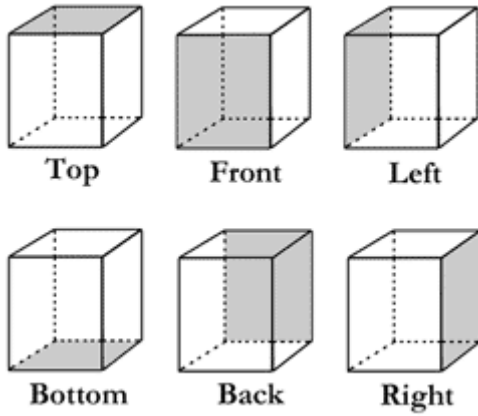
Internal photo - GAT NET Lock System 7000

Content

1	View of EUT	2
2	GAT NET.Controller S 7000 F/ISO [3.1].....	3
2.1	PCB in casing	3
2.2	PCB Top	4
2.3	PCB Bottom	5
3	GAT NET.Controller M7000 [3.1]	6
3.1	PCB in casing	6
3.2	PCB Top	7
3.3	PCB Bottom	8
4	GAT NET.Lock 7000 [4.1].....	9
4.1	PCB in casing	9
4.2	PCB Top	10
4.3	PCB Bottom	11
5	GAT NET.Lock BoltSet 7100.....	12
5.1	PCB Top	12
5.2	PCB Bottom	13
6	GAT NET.Lock Boltset 7200.....	14
6.1	PCB 1 Top	14
6.2	PCB 1 Bottom	15
6.3	PCB 2 Top	16
6.4	PCB 2 Bottom	17
7	History.....	17

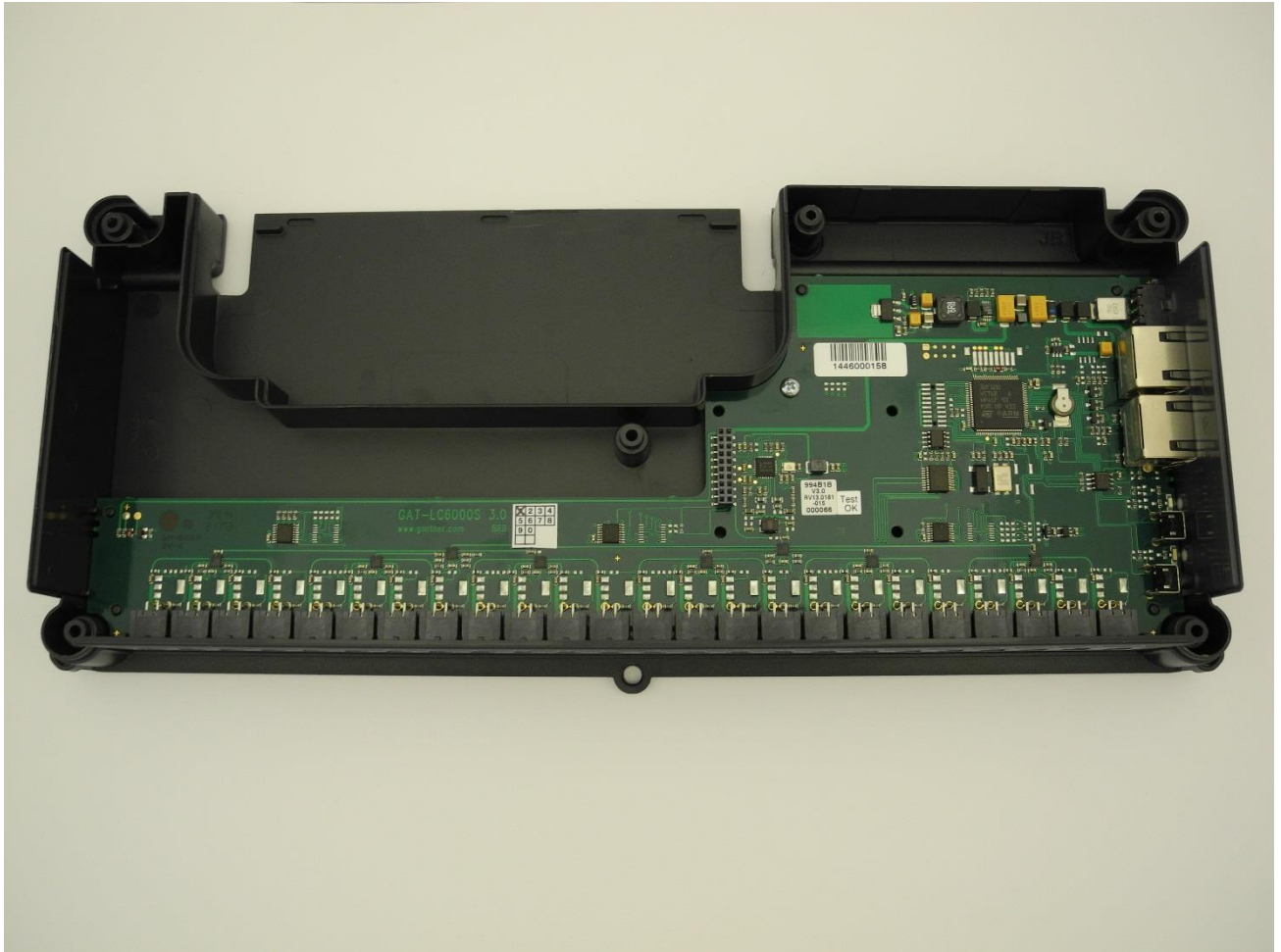
1 View of EUT

Sides of EUT are as perspective described below.

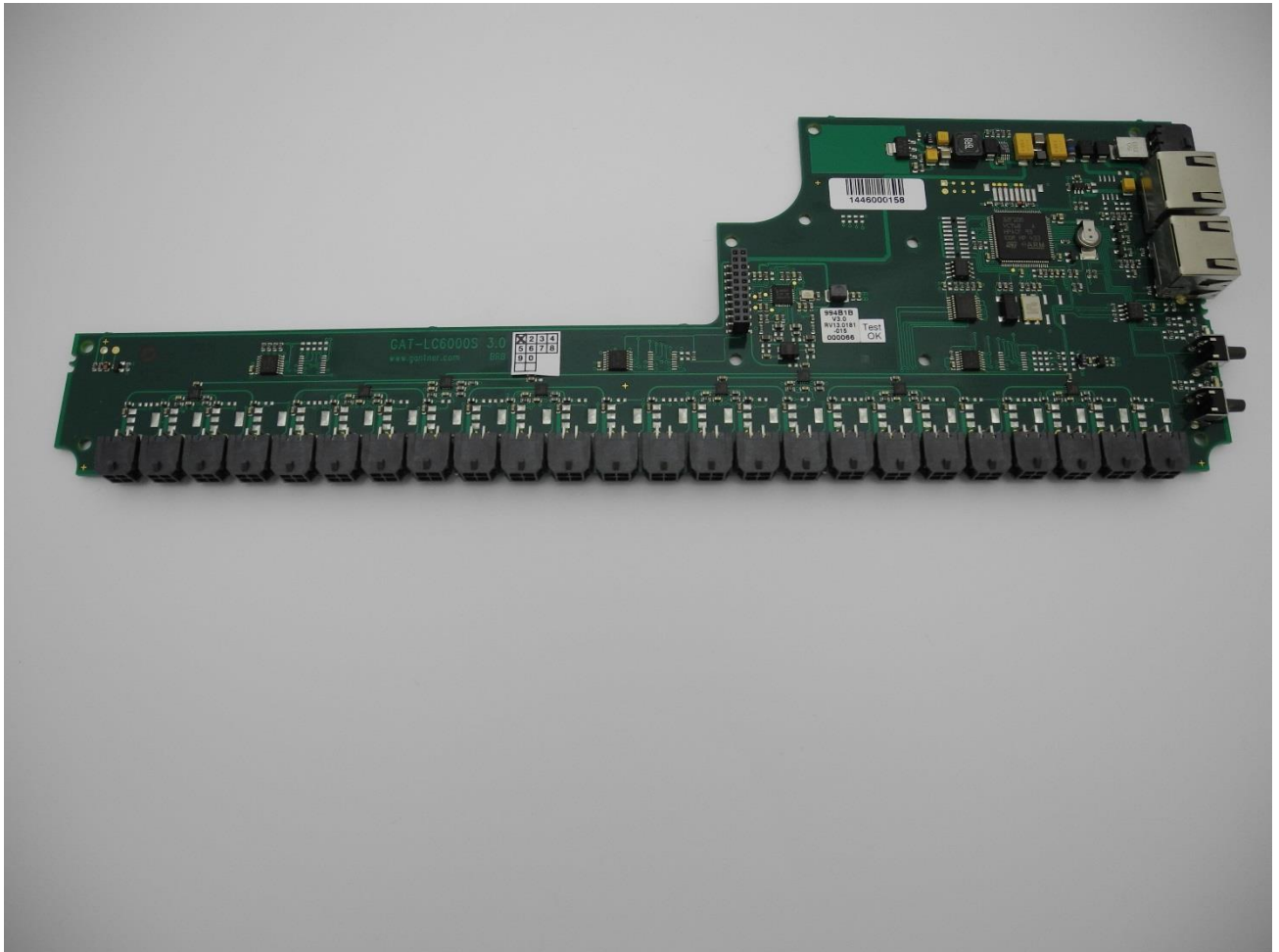


2 GAT NET.Controller S 7000 F/ISO [3.1]

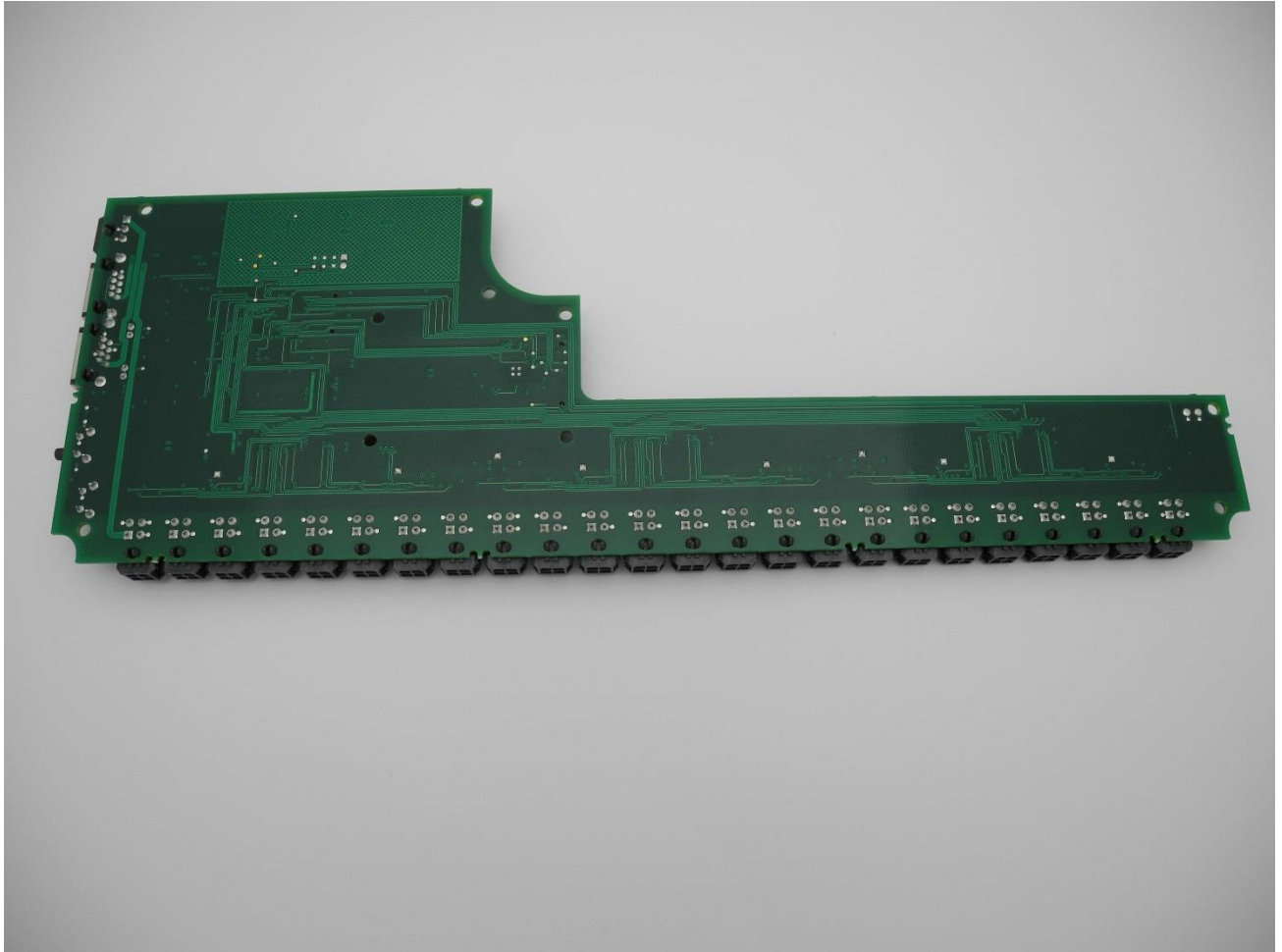
2.1 PCB in casing



2.2 PCB Top



2.3 PCB Bottom

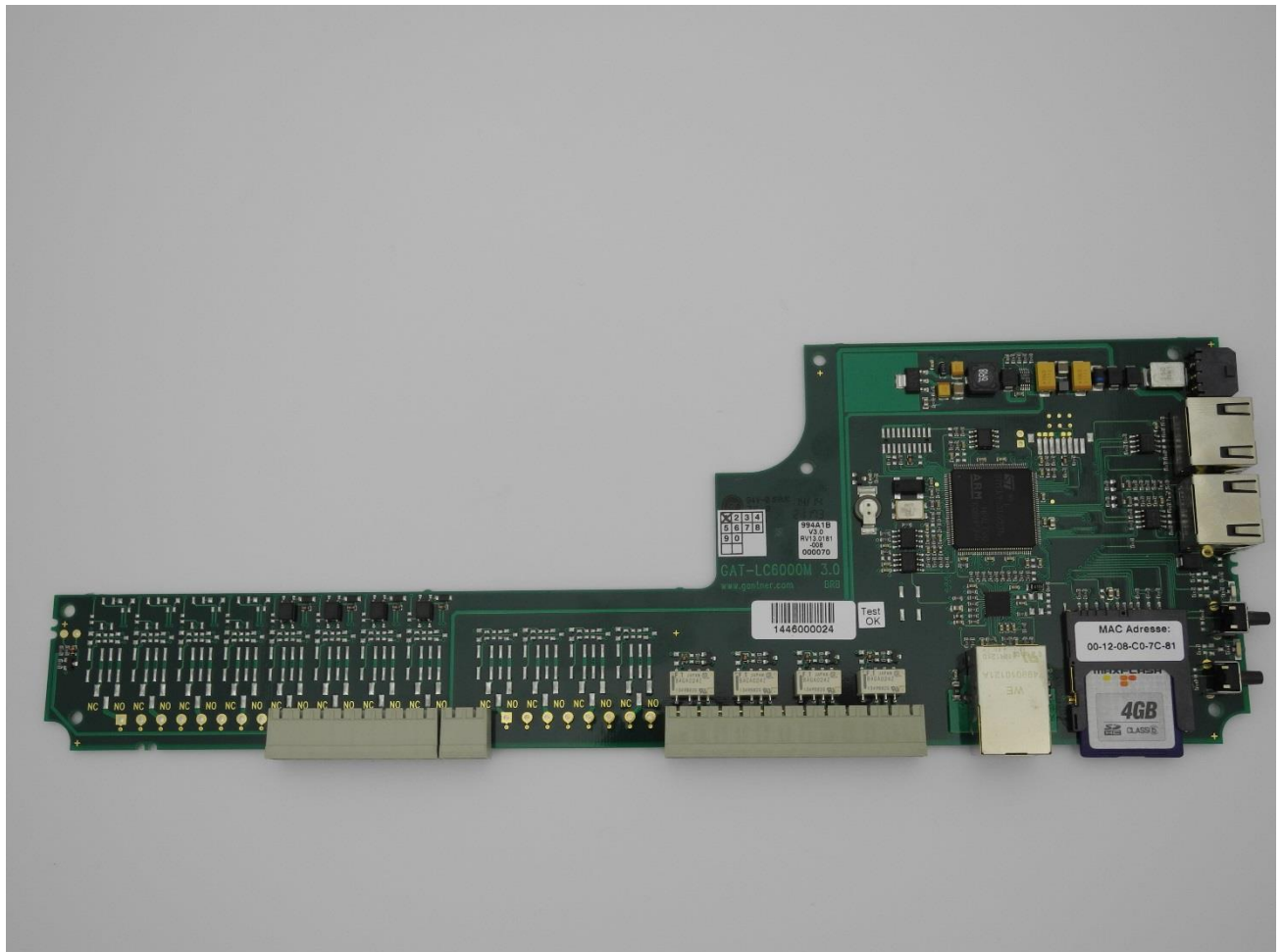


3 GAT NET.Controller M7000 [3.1]

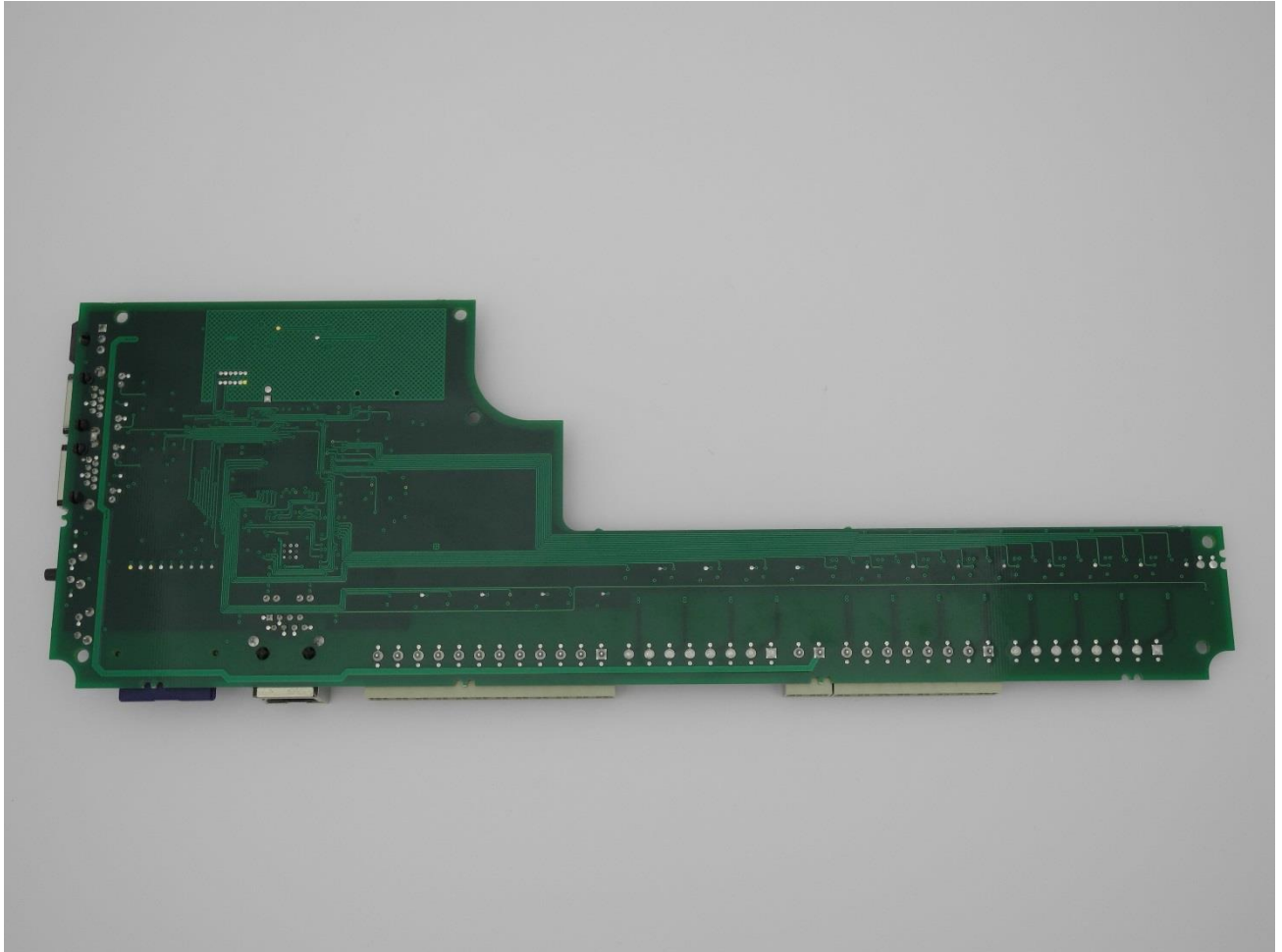
3.1 PCB in casing



3.2 PCB Top



3.3 PCB Bottom

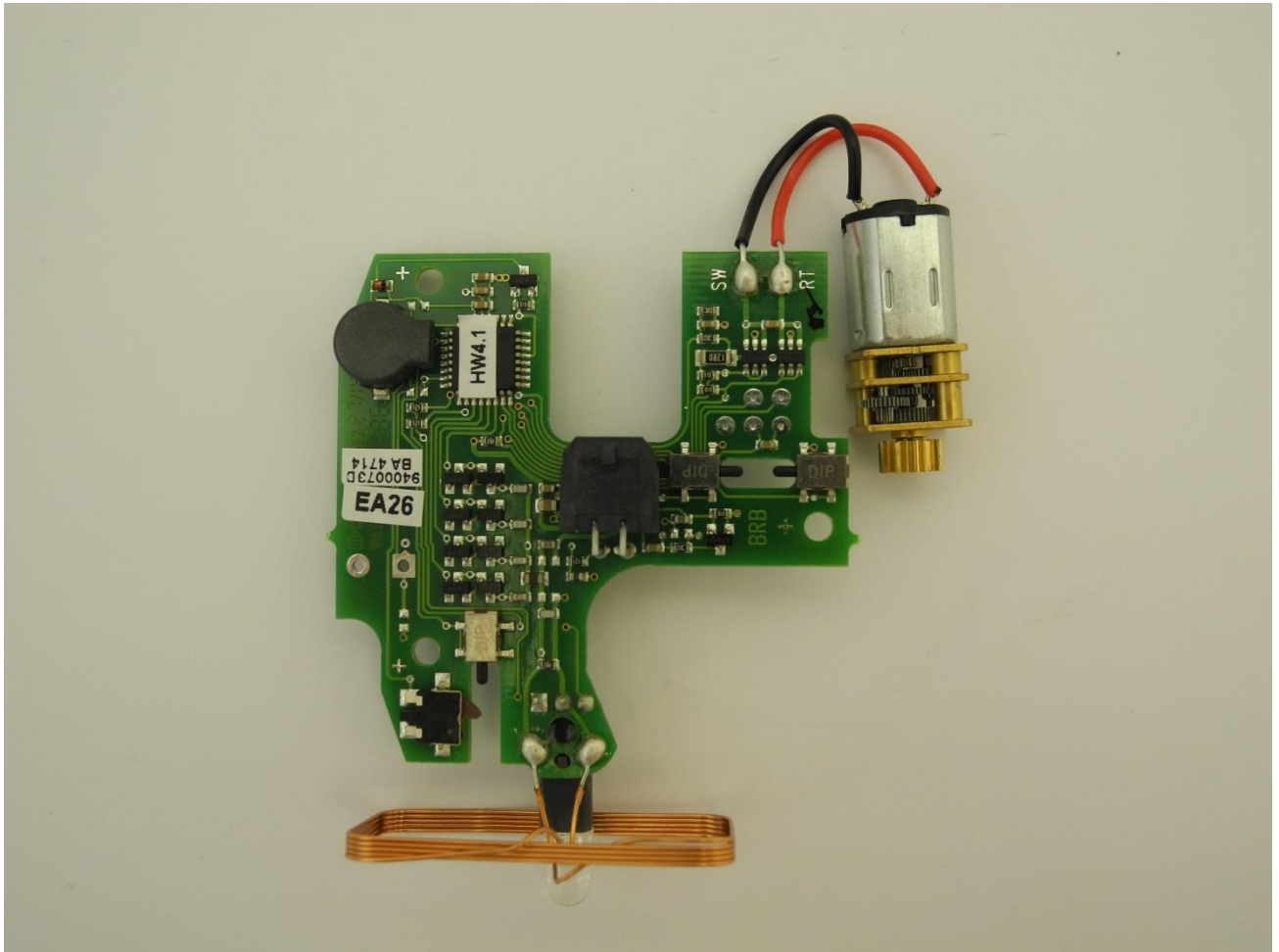


4 GAT NET.Lock 7000 [4.1]

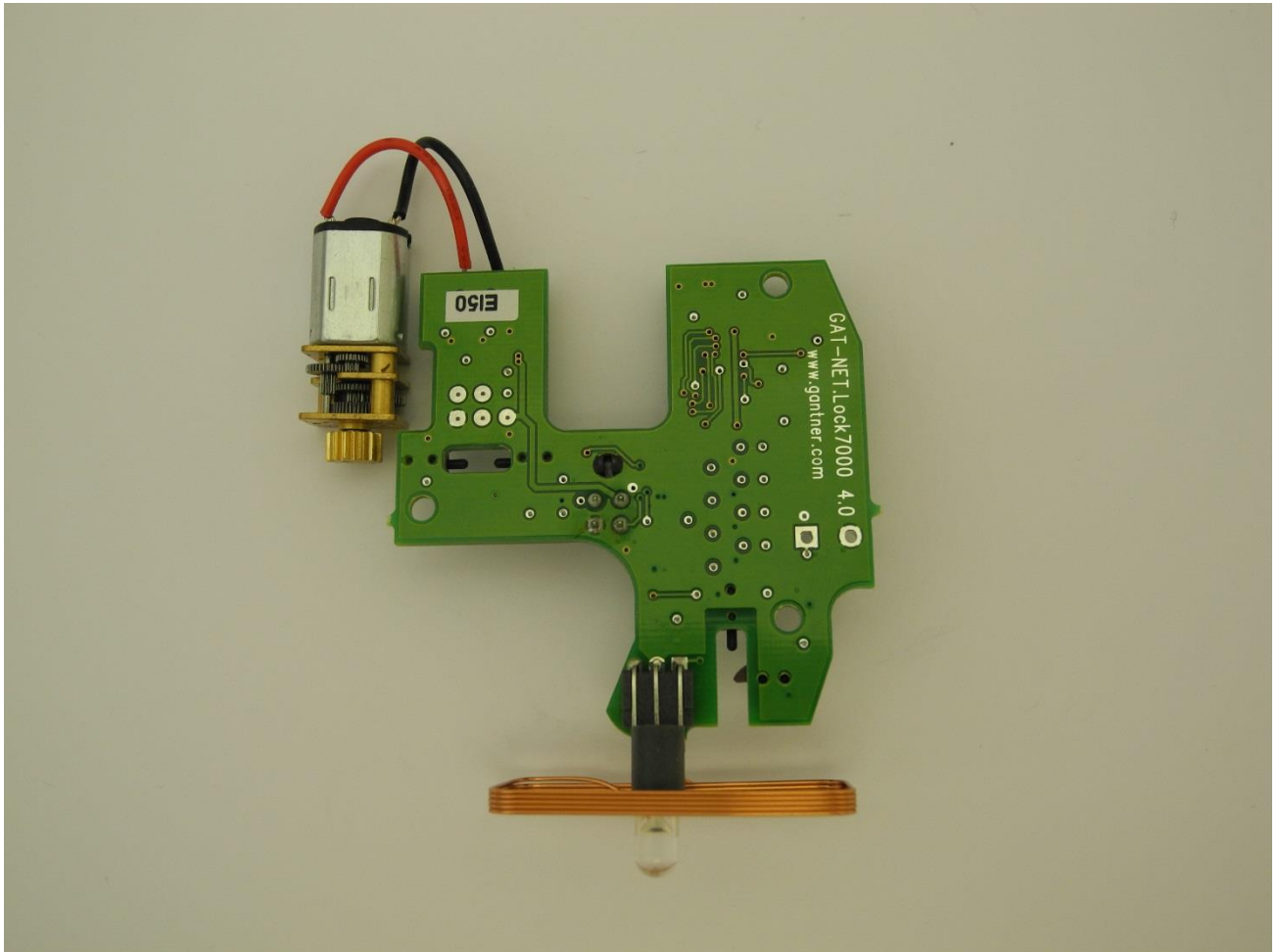
4.1 PCB in casing



4.2 PCB Top

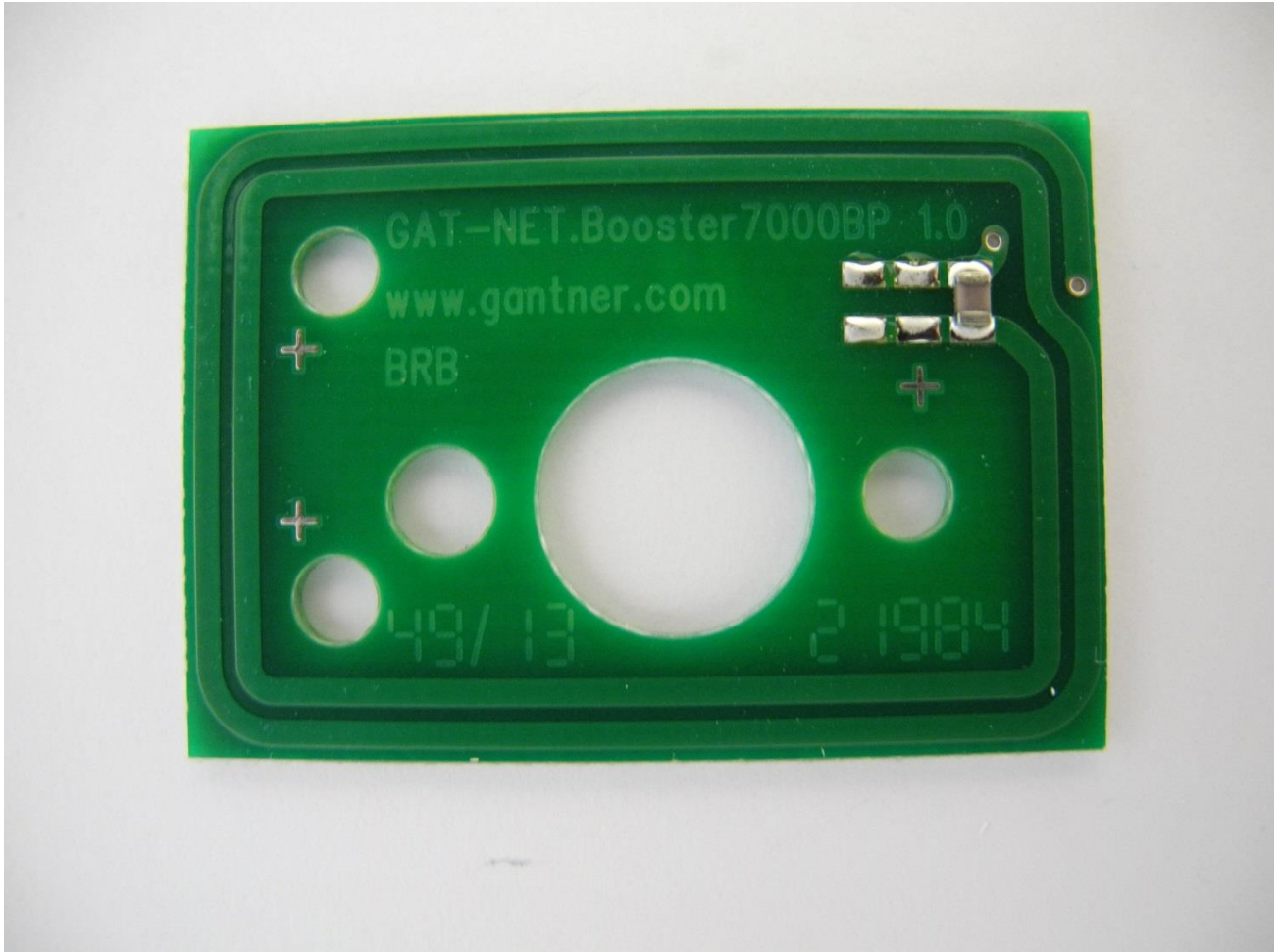


4.3 PCB Bottom

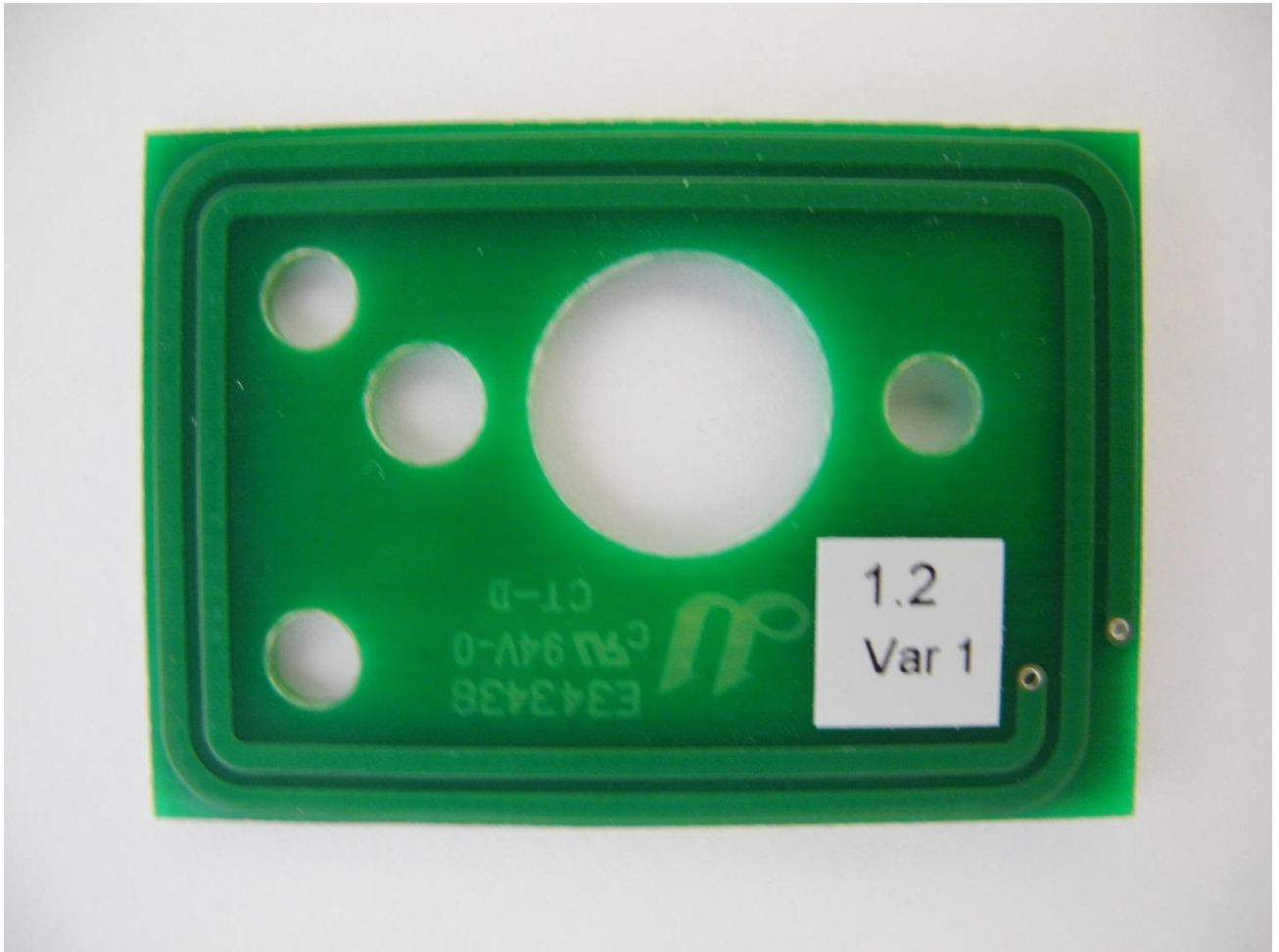


5 GAT NET.Lock BoltSet 7100

5.1 PCB Top



5.2 PCB Bottom

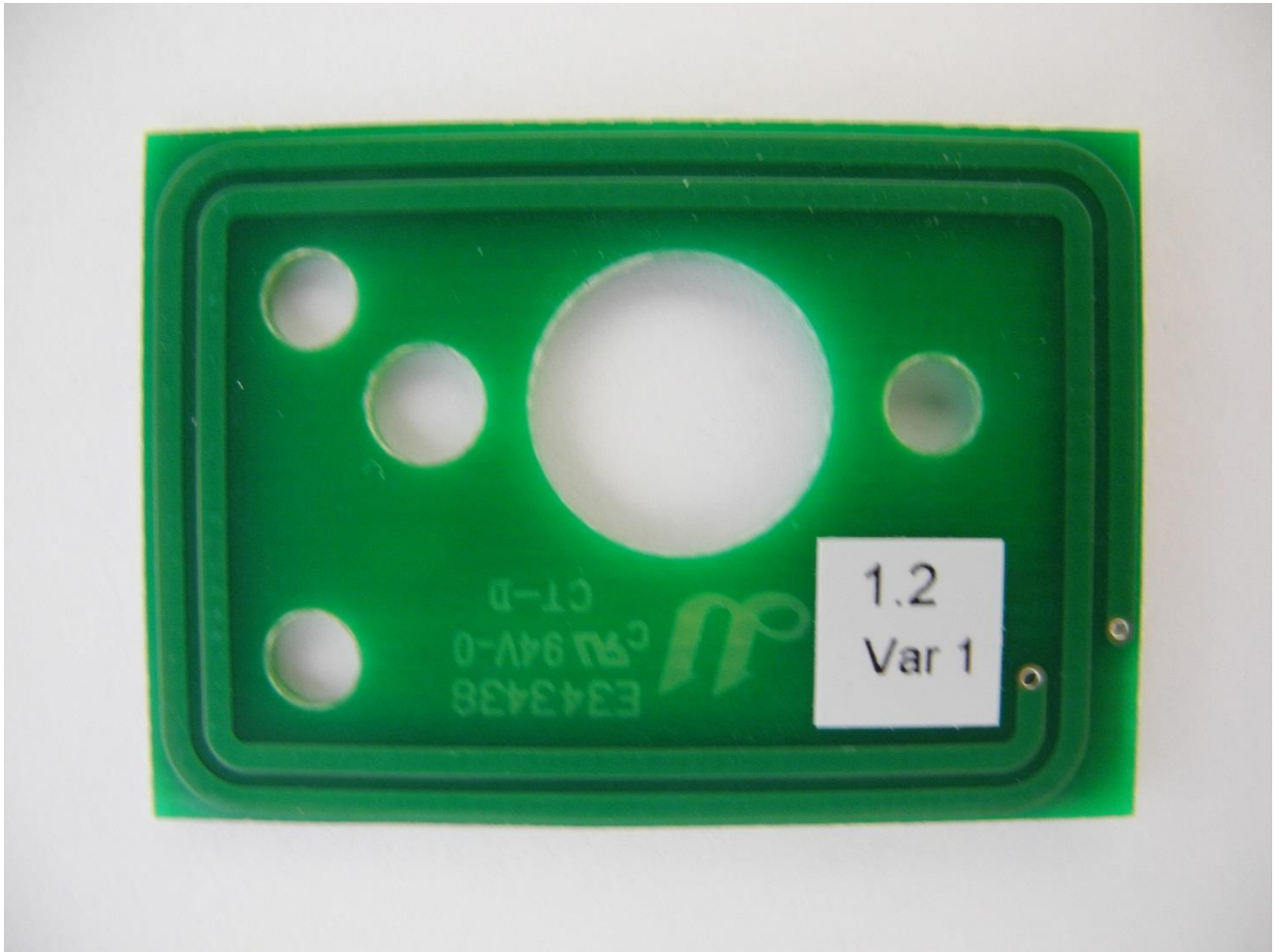


6 GAT NET.Lock Boltset 7200

6.1 PCB 1 Top



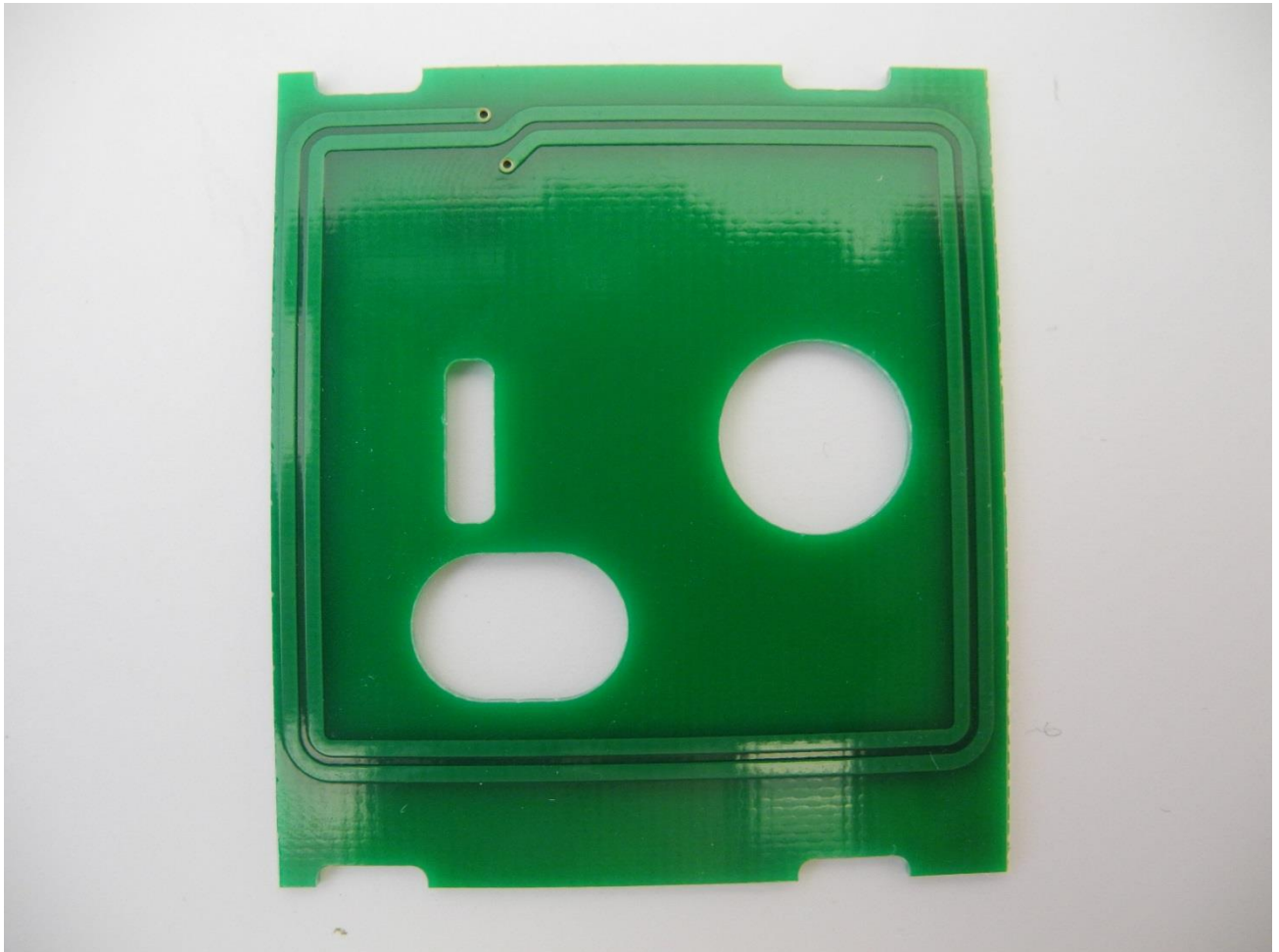
6.2 PCB 1 Bottom



6.3 PCB 2 Top



6.4 PCB 2 Bottom



7 History

Version	Author	Description	Tested by	Released on
1.0	CHP	External photos of EUT		