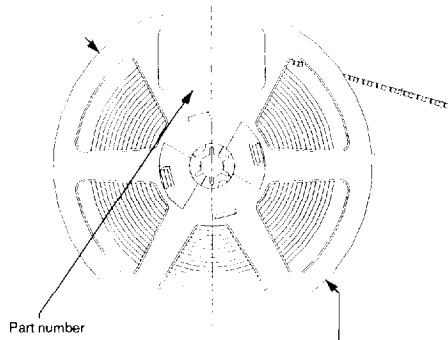
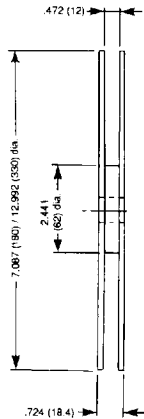
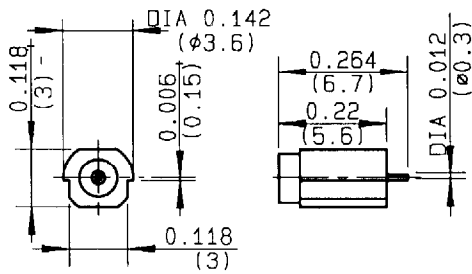
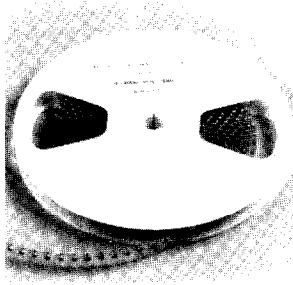
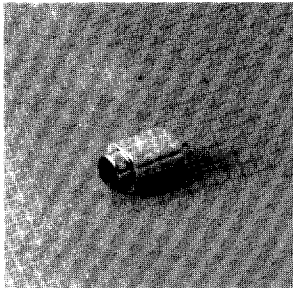


MC - CARD

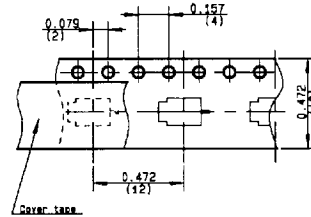
SURFACE-MOUNT RECEPTACLE



Packaging	DIA.
400	7.067 (180)
1800	12.992 (330)

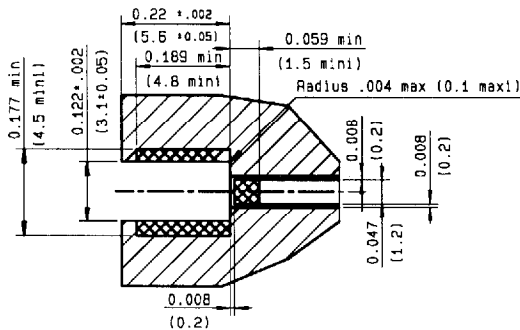
Available packaging	unit pack	Reels of
	400 recept.	1800 recept.
P / N	R199005504	R199005800 R199 005801

Finish body : Tin on nickel
center contacts : gold



Packaging in reels
(in accordance with standard CEI 286-3)
Reel : polystyrene
Carrier tape : Polycarbonate (anti-static)
Cover tape : Polyester (anti-static)

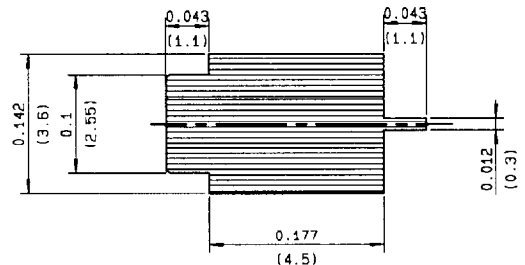
PCB CUT-OUT REQUIREMENTS AND RECOMMENDED SOLDER PADS



▨ Pattern
▩ Land for solder paste

Coplanar line : Pattern and signal are on the same side thickness of PCB : .04 (1 mm)
The material of PCB is the epoxy resin of glass fabrics bacs ($E_r = 4.8$).

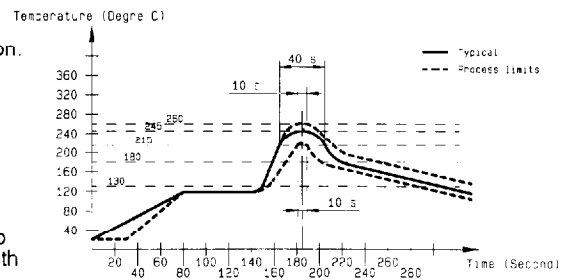
SHADOW OF MC - CARD RECEPTACLE FOR VIDEO CAMERA



SOLDER PROCEDURE OF MC-CARD RECEPTACLES IN INDUSTRIAL ENVIRONMENT

- 1 Deposit solder paste "Sn63Pb35Ag2" on mounting zone by screen printing application. We advise a thickness of 200 μ (7.800 microinch). Verify that the edges of the zone are clean.
- 2 Deposit the receptacle on the mouting zone with an automatic machine of "Pick and place" type. Video camera is preferred to check the positioning of the component. Adhesive agents are forbidden on the receptacle.
- 3 Soldering by infra-red reflow. We give, the typical profile to use.
- 4 Cleaning of printed circuit boards by CFC solvents (or a substitute product according to the United Nation's environmental programm). We advise the vapor-phase method, with or without any ultrasonic waves. This cleaning is imperative for using the receptacle.
- 5 Checking of solder joints and position of the component by visual inspection.

TEMPERATURE PROFIL



All dimensions are given in inches (mm).



101, Rue Philibert Hoffmann - 93116 ROSNY/SOUS/BOIS Cedex (FRANCE)
Téléphone : (1) 49 35 35 35 - Télécopie : (1) 48 54 63 63 - Télex : RADIA 235 220



Centurion International, Inc.
 Wireless Components
 Antennas and Power Products

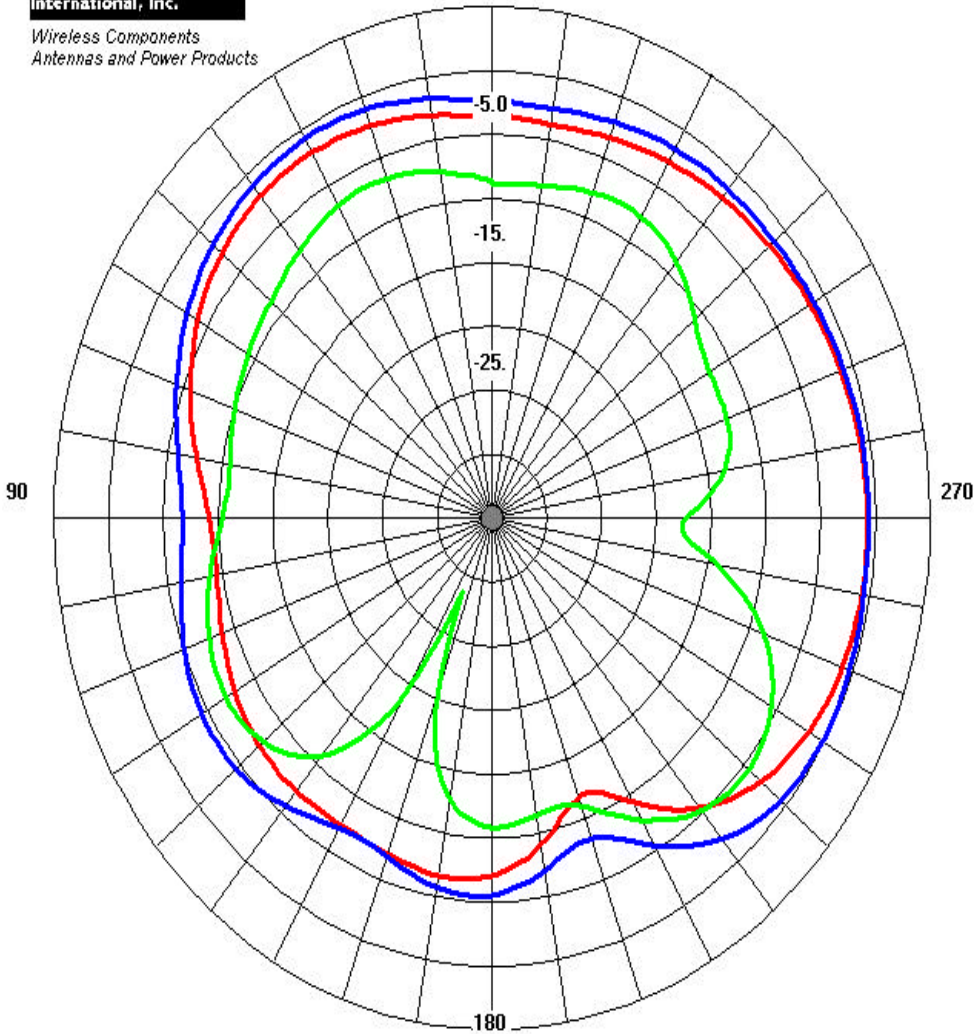
**Centurion Antenna Radiation Pattern
 Anechoic Chamber**

Thu Jun 22 13:21:18 2000
 File: Nova-ISM-k-u1.pl

0 deg.
 5.0 dBi

Plot Legend

	<u>Max. Gain</u> dBi	<u>Avg. Gain</u> dBi	<u>Max. Angle</u> deg.
— CSD #5 Antenna (LCD at 135 rees) Laptop, Free Space Az Plane 915.0MHz; E-Theta Pol	-0.6	-3.7	266.5
— CSD #5 Antenna (LCD at 135 rees) Laptop, Free Space Az Plane 915.0MHz; E-Phi Pol	-4.3	-8.8	228.7
— CSD #5 Antenna (LCD at 135 rees) Total Field Laptop, Free Space Az Plane 915.0MHz	-0.0	-2.5	240.7



CONFIDENTIAL