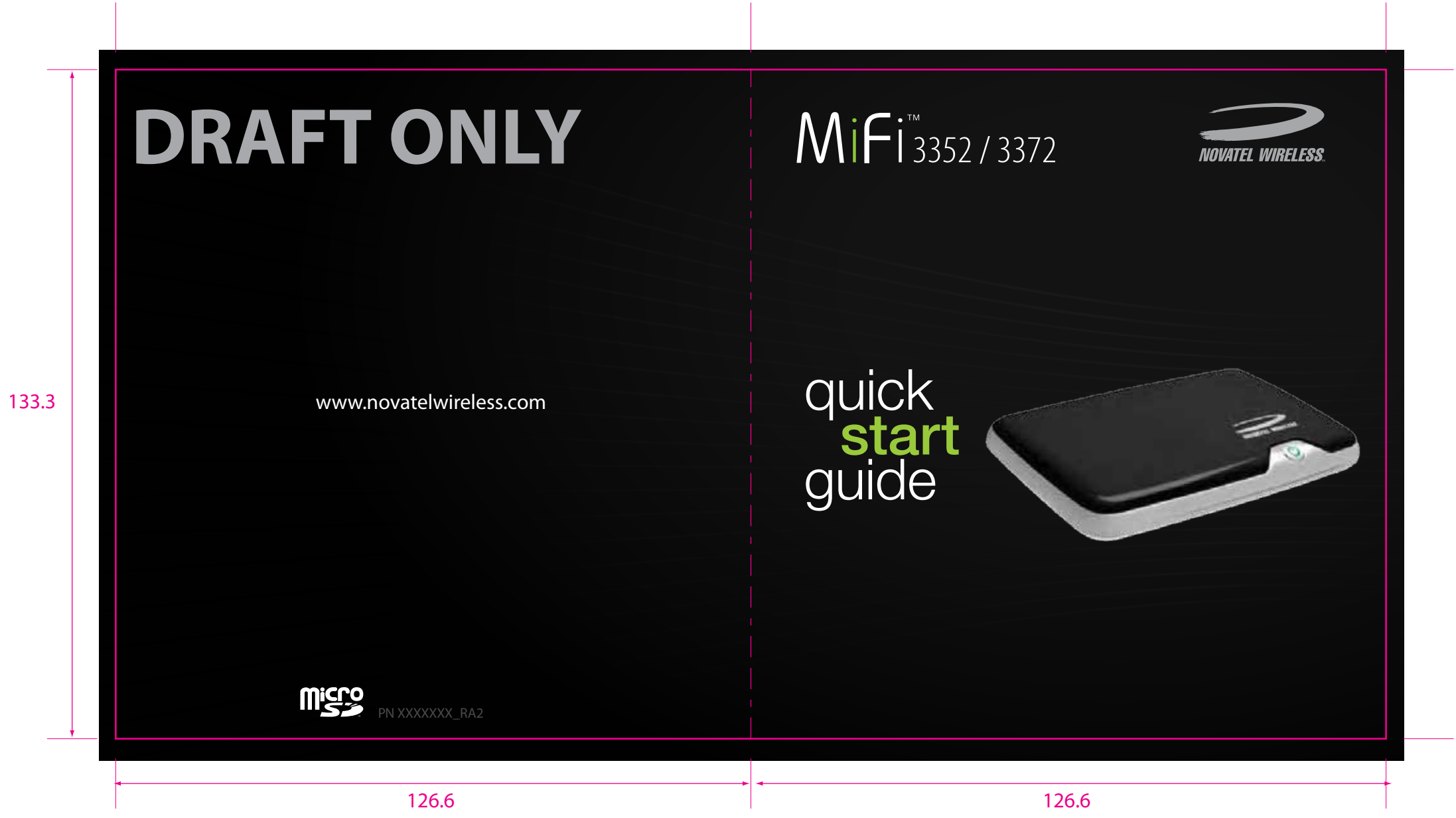
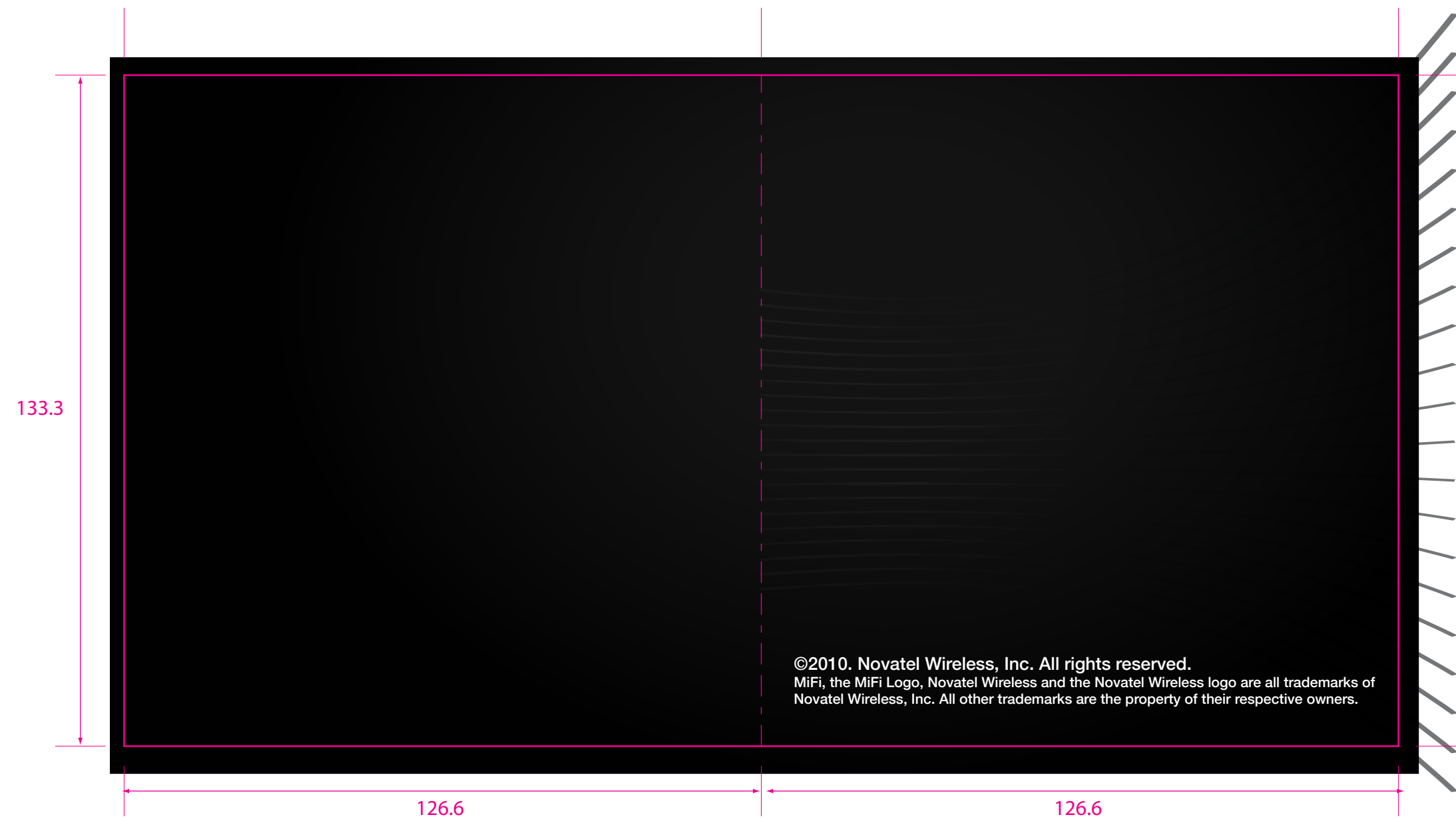
 Novatel Wireless Technologies Ltd. Suite 200, 6715 - 8th St NE Calgary, AB Canada T2E 7H7 Phone: 403 295 4800		NOTES: 1. MAGENTA OUTLINE DOES NOT PRINT. FOR DIE CUT REFERENCE ONLY. 2. MATERIAL: COVERS: 80# COVER MATTE PAGES: 70# TEXT MATTE COLOURS: CMYK Black: Process Rich Black (60/40/40/100) Pantone 376C
TITLE: QSG MiFi 3352/3372 NVTL		
P/N:	ECO:	
Rev.A 06/02/10 - INITIAL DRAFT		





133.3

Inside Front Cover

126.6

126.6

totalmobileinternet™

MiFi™ 3352/3372 with microSD™ is an intelligent mobile hotspot. Surf the web, download files and music, share photos, manage email and more at speeds of up to 7.2 Mbps download and 5.76 Mbps† upload.

This 2-in-1 device with microSD provides freedom to do what you want, when you want, how you want. Transfer files between computers on the fly with microSD, share a connection with up to five WiFi enabled devices and access mobile broadband networks HSPA, UMTS, EDGE, and GPRS in Europe, North America, and Asia-Pacific*.

With Zero-CD technology, installation couldn't be simpler. Review the next three sections and you'll be well on your way to experiencing the freedom total mobile internet.

NOTE:

This is a Quick Start Guide. For complete details and information regarding the use of your device, accessories, and safety and regulatory information, please consult the User Guide on the device or visit www.nvtl.com/support.

DO NOT INSERT THE DEVICE INTO YOUR COMPUTER UNTIL YOU HAVE REVIEWED THE STEPS OUTLINED IN THIS QUICK START GUIDE.

† Category 6, 5.76 Mbps firmware upgrade available in Q3, 2008
* Subject to operator roaming agreements

133.3

System Requirements

Windows® 2000, XP, Vista; Mac® OS X (10.4.7+); Linux® (2.4, 2.6)
100 MB Hard Drive Space
128 MB of RAM

Contents

- MiFi 3352/3372
A 2-in-1 Intelligent Mobile Hotspot with removable memory.
- USB cable
- Rechargeable lithium ion battery
- Wall charger with international adapters
- Car charger
- Carry pouch

*Visit www.nvtl.com/support for configuration details

1

126.6

MiFi 3352/3372



- LED Power Button
Powers on and off the device. The LED provides connections status. See page 8 for a detailed list of the colours and their defined states.
- SIM Card Slot
The SIM card is inserted here.
- microSD Slot
Removable memory storage slot (microSD card not included).
- microUSB port
The USB cable, Wall Charger, and Car Charger connect here.
- Battery and SIM Door
The battery and SIM card are stored here.

NOTE: For more information on the details of your device and accessories, consult the User Guide at www.novatelwireless.com

2

126.6

1

Getting Started

Insert SIM Card and Battery

Before connecting MiFi to your computer for the first time, you must insert the (U)SIM card supplied by your service provider and insert and charge the battery.

- 1 Open the door at the bottom of the device.



- 2 Insert the SIM card into the SIM slot as shown.

FPO

- 3 Now, insert the battery, lining up the contact points as shown and replace the door back on the device.



You must have an account with a service provider. Your service provider may have provided activation instructions in this packaging. Otherwise, contact your service provider for complete instructions.

3

126.6

1

Getting Started

Charge the Battery

IMPORTANT: When installing or replacing a battery, ensure that the MiFi modem is not connected to your computer with the USB cable or a USB power supply. Review the Battery Tips and Safety disposal instructions at the back of this guide.

- 1 Connect the microUSB end of the Wall Charger to the microUSB port of the device.

FPO

- 2 Plug the other end of the Wall Charger into the appropriate electrical outlet. Charge for at least two hours.

FPO

- 3 You are now ready to install MobiLink software and drivers. In order to install MobiLink you must use the USB cable (included).

FPO

4

126.6

133.3

2

Installation

Windows®
Mac®

- » Turn on your computer and close all open applications.
- » Insert the USB cable into the microUSB port on MiFi and the other end into a USB port on your computer.

Windows - MobiLink

- 1 MobiLink software and drivers for Windows automatically installs.
- 2 Activate your device with a service provider and create a profile (page 6).
- 3 Launch MobiLink and Connect!

Mac - Internet Connect

- 1 Two files appear on the Mac desktop, Instructions.pdf and Driver_Installer.app.
- 2 Follow the instructions outlined in the Instructions.pdf file for the full installation procedure.

Linux users: Go to www.novatelwireless.com/support for installation and configuration instructions.

5

133.3

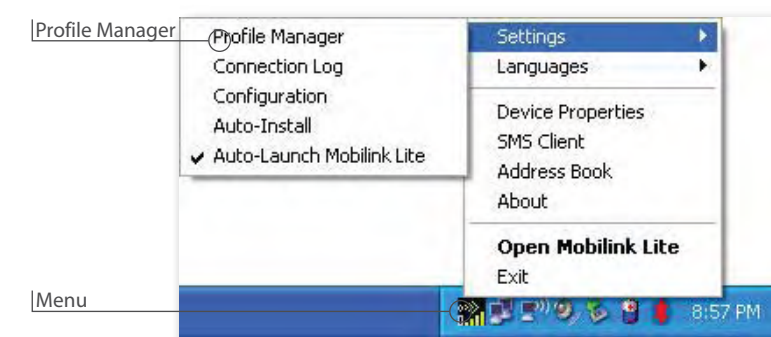
126.6

2

Installation

Set Up Profile
(Windows)

- 1 Start the newly installed MobiLink software.
- 2 Click the **Menu** Icon and select **Profile Manager**.
- 3 Click **New**, enter a Profile Name and APN*, then click **Next**.
- 4 Enter your Username* and Password*, if required, and click **Finish**.



*Available from your service provider

6

126.6

3

Connect

USB Cable
Wi-Fi

There are two methods to connect MiFi to your computer: USB Cable or Wi-Fi.

Connect MiFi with the the USB Cable

- 1 Insert the microUSB end of the USB cable to the microUSB port of MiFi and the other end into a USB port on your computer.
- 2 The Power LED and 3G status indicator on the device both illuminate.
- 3 Press the Power LED button and launch MobiLink.

Connect MiFi via Wi-Fi

- 1 Press the Power button on MiFi. The Power LED and the 3G status indicator on the device both illuminate.
- 2 Press the Power LED button and launch MobiLink.
- 3 Use your normal Wi-Fi application on your computer to establish a connection to the MiFi modem.
- 3 Look for the network, named TBD, in your list of available networks and click Connect.







7

126.6

3

The Basics/3372

LED States

RED		SIM Error	Flashing:	SIM card may be missing or inserted incorrectly
		No Service	Solid:	GPRS/EDGE/UMTS/HSDPA cellular service is currently not available
GREEN		GPRS	Flashing:	GPRS service is available
			Solid:	Connected to a network using GPRS
VIOLET		EDGE	Flashing:	EDGE service is available
			Solid:	Connected to a network using EDGE
BLUE		UMTS	Flashing:	UMTS service is available
			Solid*:	Connected to a network using UMTS
YELLOW		HSDPA	Solid*:	HSDPA service is available and is being used during the download
CYAN		HSUPA	Solid*:	HSUPA service is available and is being used during the upload

*The LED may appear to flash blue and then yellow or cyan as the service transitions between UMTS and HSDPA/HSUPA.

8

126.6

133.3

3

The Basics

Caring for and Your Device

- Avoid storing your device in extreme temperatures.
- Store your device in a dry and clean environment.
- Avoid spilling any liquid on your device or immersing it in water.
- Do not place any labels on the device as doing so could alter the sensitivity of the antenna.
- Do not force the cable into the USB port.
- Do not force the SIM card into the SIM card slot.
- Do not apply force to the top or bottom of your device.
- Remove the cable from the USB port before transporting your computing device.

NOTE: Please consult the User Guide for complete regulatory and safety information, available at www.nvtl.com/support and on the device.

9

Regulatory Information

CE Marking

This device has been tested to and conforms to the essential regulatory requirements of the European Union R&TTE directive 1999/5/EC and has attained CE Marking.

Federal Communications Commission Notice (FCC United States)

This equipment has been tested to, and found to be within the acceptable limits for a Class B digital device, pursuant to part 15 of the FCC Rules and Industry Canada ICES-003. These limits are designed to provide reasonable protection against harmful interference when the equipment is operated in a residential environment.

This equipment generates radio frequency energy and is designed for use in accordance with the manufacturer's user manual. However, there is no guarantee that interference will not occur in any particular installation.

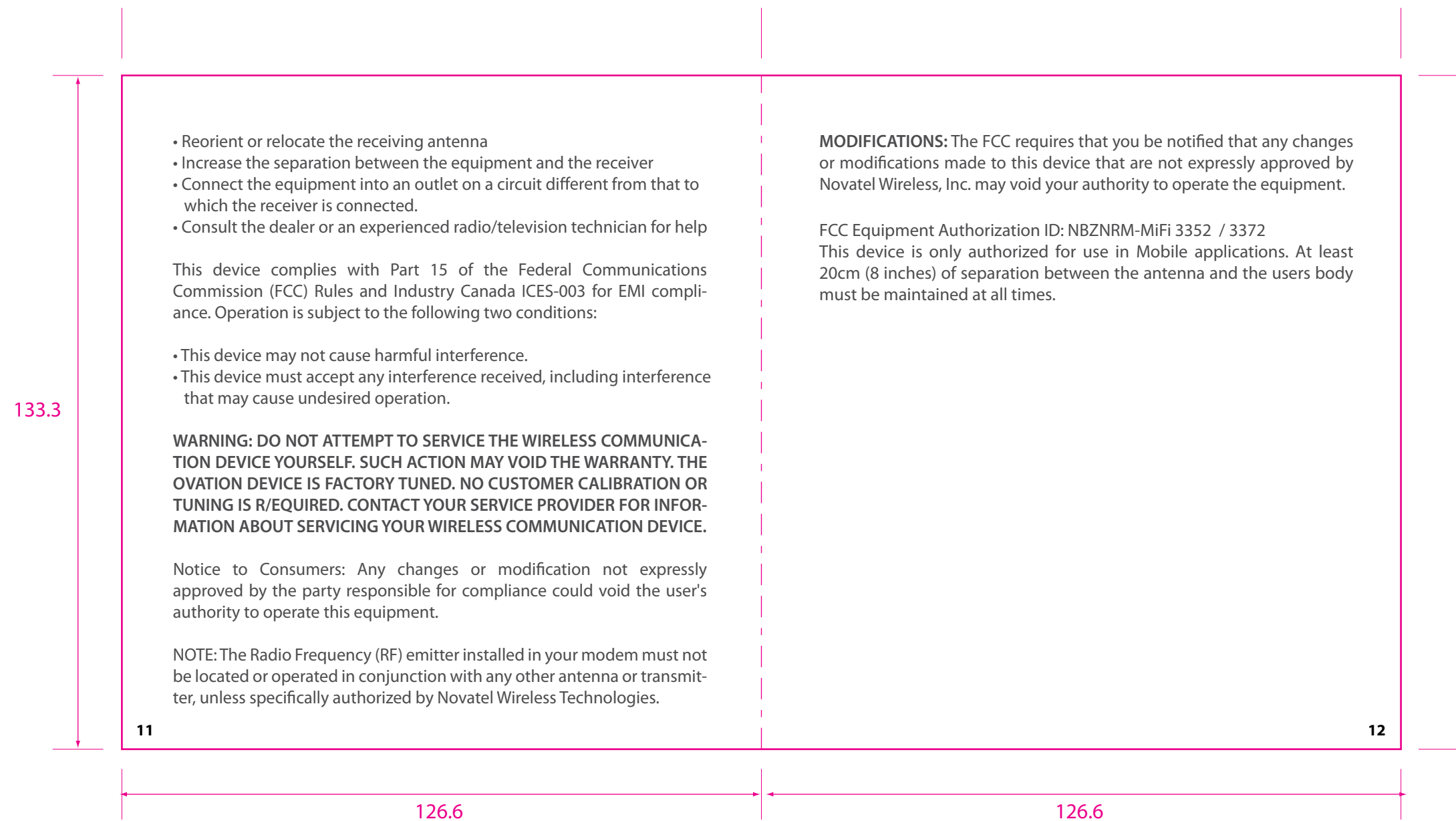
If this equipment causes harmful interference to radio or television reception, which can be determined by turning the equipment off and on, you are encouraged to try to correct the interference by one or more of the following measures:

10

133.3

126.6

126.6



133.3

Safety Notices

DO not operate your device in any area where medical equipment, life support equipment, or near any equipment that may be susceptible to any form of radio interference. In such areas, the host communications device must be turned off. The MiFi 3352/3372 may transmit signals that could interfere with this equipment.

On an aircraft, either on the ground or airborne

In addition to FAA requirements, many airline regulations state that you must suspend wireless operations before boarding an airplane. Please ensure that both MiFi and the host device are turned off and that the MiFi USB Cable is removed from the USB ports prior to boarding aircraft in order to comply with these regulations. MiFi can transmit signals that could interfere with various onboard systems and controls.

While operating a vehicle

The driver or operator of any vehicle should not operate a wireless data device while in control of a vehicle. Doing so will detract from the driver or operator's control and operation of that vehicle. In some countries, operating such communications devices while in control of a vehicle is an offense.

13

126.6

Battery tips

Battery life depends on the network, signal strength, temperature, features, and accessories you use.

-Always use Novatel Wireless Original batteries and chargers. The warranty does not cover damage caused by non-Novatel Wireless batteries and/or chargers.

-New batteries or batteries stored for a long time may take more time to charge.

-When charging your battery, keep it near room temperature.

-When storing your battery, keep it uncharged in a cool, dark, dry place.

-Never expose batteries to temperatures below -10°C (14°F) or above 45°C (113°F). Never leave the device in an unattended vehicle due to uncontrollable temperatures that may be outside the desired temperature for this device.

-It is normal for batteries to gradually wear down and require longer charging times. If you notice a change in your battery life, it is probably time to purchase a new battery.

Contact your local recycling center for proper battery disposal.

WARNING: Never dispose of batteries in a fire because they may explode.

Before using the MiFi Modem, read the battery safety information in the "Safety and General Information" section at the back of this guide. You will need to install and charge the battery as described on page XX. Some batteries perform best after several full charge/discharge cycles.

14

126.6

133.3

Proper Battery Use and Disposal

IMPORTANT: In event of a battery leak:

- Do not allow the liquid to come in contact with the skin or the eyes. If contact has been made, wash the affected area with large amounts of water and seek medical advice.
- Seek medical advice immediately if a battery has been swallowed.
- Communicate the appropriate steps to be taken if a hazard occurs.

Please review the following guidelines for safe and responsible battery use:

- Do not disassemble or open, crush, bend or deform, puncture, or shred.
- Do not modify or remanufacture, attempt to insert foreign object into the battery, immerse or expose to water or other liquids, or expose to fire, explosion, or other hazard.
- Only use the battery for the system for which it was specified.
- Only use the battery with a charging system that has been qualified with the system per this standard. Use of an unqualified battery or charger may present a risk of fire, explosion, leakage, or other hazard.
- Do not short circuit a battery or allow metallic or conductive object to contact the battery terminals.
- Replace the battery only with another battery that has been qualified with the system per this standard. Use of an unqualified batter may present a risk of fire, explosion, leakage, or other hazard.
- Promptly dispose of used batteries in accordance with local regulations.
- Battery usage by children should be supervised.
- Provide an explanation of security implementation, per 10.2.1.

-Avoid dropping the device or battery. If the device or the battery is dropped, especially on a hard surface, and the user suspects damage, take it to a service center for inspection.

-Improper battery use may result in a fire, explosion, or other hazard.

126.6

126.6