

**NOVATEL WIRELESS**

March 24, 2009

Federal Communications Commission  
Authorization & Evaluation Division  
7345 Oakland Mills Road  
Columbia, Maryland 21046

Re: Compliance of NBZNRM-MIFI2372 with §15.203

Dear Sirs:

Regarding the product in question and the requirement for a permanently attached antenna in accordance with 47 CFR §15.203, the NBZNRM-MIFI2372 employs a ceramic surface mount antenna, manufactured by Ethertronics, Part Number: M442100. The antenna is soldered to the PCB and cannot be removed therefore is compliant with §15.203.

Sincerely,

A handwritten signature in blue ink, appearing to read 'Jim Turner', with a long horizontal flourish extending to the right.

Jim Turner

Regulatory Technical Specialist  
Novatel Wireless Inc.  
Suite 200, 6715- 8<sup>th</sup> St N.E.  
Calgary, Alberta, Canada  
T2E-7H7



May 12, 2009

Federal Communications Commission  
Authorization & Evaluation Division  
7345 Oakland Mills Road  
Columbia, Maryland  
21046

Re: Function of MIFI2372 pertaining to requirements in §15.247/§15.15(b)  
FCC ID: NBZNRM-MIFI2372

The MIFI2372 does not operate on Channels 12 and 13 of the 802.11 b/g radio. This is accomplished via the following:

- In Firmware there is a definition = WIFI\_MAX\_ALLOWABLE\_RADIO\_CHANNEL
- This limits the maximum WiFi channel number that the Access Point can be configured for.
- Any time FW attempts to configure the WiFi Channel it will verify that the new setting is not greater than our defined limit.
- If the proposed setting is past our limit it will set the channel to the default (RUIDEF\_WICH). This is currently set to 6 in the FW.
- The limit, WIFI\_MAX\_ALLOWABLE\_RADIO\_CHANNEL, will be set to 11.

An example of the logic in FW is as follows.

```
If (new_wifi_channel_setting > WIFI_MAX_ALLOWABLE_RADIO_CHANNEL)
{
    Wifi_channel = RUIDEF_WICH
}
```

There are no user settings that will allow the end user to change or configure any parameter of interest to the commission on the 802.11 b/g radio.

Sincerely,

A handwritten signature in black ink, appearing to read "Jim Turner", written over a horizontal line.

Jim Turner  
Regulatory Technical Specialist  
Novatel Wireless Inc.  
Suite 200, 6715- 8<sup>th</sup> St N.E.  
Calgary, Alberta, Canada  
T2E-7H7

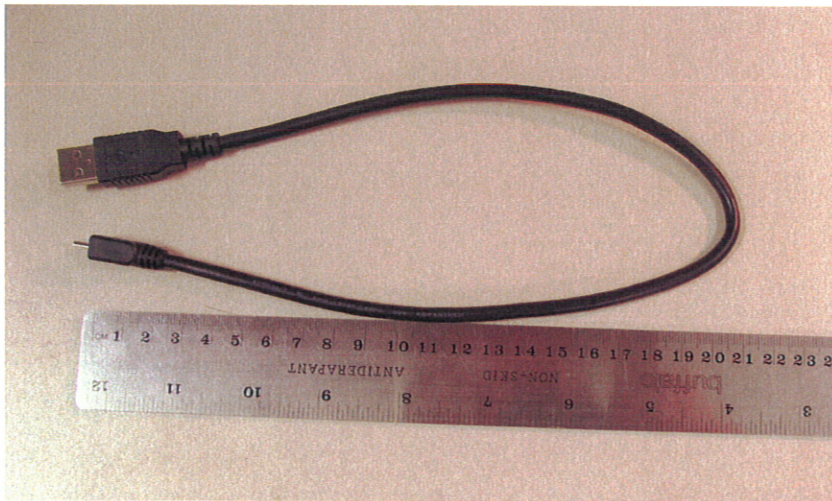


May 13, 2009

Federal Communications Commission  
Authorization & Evaluation Division  
7345 Oakland Mills Road  
Columbia, Maryland  
21046

Re: USB Cable supplied with NBZNRM-MIFI2372.

As illustrated below, Novatel Wireless supplies a 47 cm cable with the MIFI product which is accordance with the definition of a Mobile Product per FCC §2.1091, the device being >20cm away from a user in normal operating conditions. This is identified in the documentation included in the package that is purchased.



Sincerely,

A handwritten signature in blue ink, appearing to read "Jim Turner".

Jim Turner

Regulatory Technical Specialist  
Novatel Wireless Inc.  
Suite 200,6715- 8<sup>th</sup> St N.E.  
Calgary, Alberta, Canada  
T2E-7H7