

©2010 Novatel Wireless, Inc. All rights reserved. The information contained in this document is subject to change without notice and should not be construed as a commitment by Novatel Wireless, Inc.

Patents and Licenses

Visit www.nvtl.com/patents for a complete list of all Novatel Wireless patents.

Software License

Proprietary Rights Provisions:

The software drivers provided with this product are copyrighted by Novatel Wireless and/or Novatel Wireless' suppliers. Although copyrighted, the software drivers are unpublished and embody valuable trade secrets proprietary to Novatel Wireless and/or Novatel Wireless' suppliers. The disassembly, decompilation, and/or Reverse Engineering of the software drivers for any purpose is strictly prohibited by international law. The copying of the software drivers, except for a reasonable number of back-up copies is strictly prohibited by international law. It is forbidden by international law to provide access to the software drivers to any person for any purpose other than processing the internal data for the intended use of the software drivers.

U.S. Government Restricted Rights Clause:

The software drivers are classified as "Commercial Computing device Software" and the U.S. Government is acquiring only "Restricted Rights" in the software drivers and their Documentation.

U.S. Government Export Administration Act Compliance Clause:

It is forbidden by US law to export, license or otherwise transfer the software drivers or Derivative Works to any country where such transfer is prohibited by the United States Export Administration Act, or any successor legislation, or in violation of the laws of any other country.

Trademarks and Service Marks

Novatel Wireless is a trademark of Novatel Wireless, Inc., and the other trademarks, logos, and service marks (collectively the "Trademarks") used in this user manual are the property of Novatel Wireless or their respective owners. Nothing contained in this user manual should be construed as granting by implication, estoppel, or otherwise, a license or right of use of Novatel Wireless or any other Trademark displayed in this user manual without the written permission of Novatel Wireless or its respective owners.

- Ovation, the Ovation logo, Novatel Wireless, and the Novatel Wireless logo are all trademarks of Novatel Wireless, Inc.
- Mobilink™ is a trademark of Novatel Wireless.
- Microsoft® and Windows® are either registered trademarks or trademarks of Microsoft® Corporation in the United States and/or other countries.
- Apple® and Mac® are registered trademarks of Apple, Inc., registered in the U.S. and other countries.
- Linux® is a registered trademark of Linus Torvalds in the United States and/or other countries.
- microSDHC, SD Card, and the SD logo are trademarks of SD-3C LLC.

The names of actual companies and products mentioned in this user manual may be the trademarks of their respective owners.

FCC ID: NBZNRM-MC547

IC: 3229A-MC547

FCC ID: NBZNRM-MC545

IC: 3229A-MC545

PN: 90026247_R1_Draft1_08Nov2010

Please visit www.novatelwireless.com for the latest information about your device.

Contents

Getting Started	1
Welcome	2
Product Overview	2
Package Contents	2
System Requirements	2
Components	3
LED States (MC545 / MC547)	4
Caring for Your Device	5
Using Ovation	6
Using the Device for the First Time	7
Insert the SIM Card	7
Properly Insert the Device in Your Computer	8
Install the MobiLink Software	9
After Installation is Complete	9
Connect To and Disconnect From the Network	10
Activation	10
Accessing the User Guides	11
Using a microSDHC™ Card	12
microSDHC Slot	12
Inserting and Removing a microSDHC Card	12
Saving Files to microSDHC	14
Troubleshooting	16
Overview	17
Common Problems and Solutions	18
Support	19
Product Specifications and Regulatory Information	20
Product Specifications	21
Regulatory Statements	23
CE Marking	23
Federal Communications Commission Notice (FCC – United States)	24
Wireless Communications	25
Limited Warranty and Liability	25
Safety Hazards	26
Glossary	28

1

Getting Started

Welcome
Product Overview
Components
Caring for Your Device

Welcome

Congratulations on your purchase of the Novatel Wireless Ovation™ MC545/MC547 HSPA+ Dual-Carrier High-Speed Data Modem! Please review this manual before installing the MobiLink software and drivers, and before using the device for the first time.

Product Overview

Package Contents

The Novatel Wireless Ovation MC545/MC547 modem package includes:

- Ovation modem
- Quick Start Guide
- MobiLink Software (included on the device; no CD required)
- MobiLink User Guide (on device)

System Requirements

- Supported operating systems
 - Windows® XP (Service Pack 2 or higher), Vista, 7
 - Mac OS® X v10.4.x Tiger, v10.5.x Leopard, v10.6.x Snow Leopard and later
 - Linux® (v2.6 and later) Visit www.novatelwireless.com for more information.
- USB port: USB 1.1 supported; USB 2.0 high speed recommended
- Hard Drive: minimum 100 MB available
- Memory: 64 MB RAM
- Internet browser software: i.e., Microsoft Internet Explorer v6.0 or higher, Firefox, Safari, Opera, Chrome







Components



- ❶ **LED indicator:** Indicates the device is working correctly or needs attention; also indicates data transmission. [See [LED States \(MC545 / MC547\)](#) (page 4).]
- ❷ **Hinged USB connector:** Allows the USB connector to open and close.
- ❸ **SIM card slot:** (On the back of the device, under the removable plastic panel.) Holds the SIM card from your network operator.
- ❹ **microSDHC slot:** (On the back of the device, under the removable plastic panel.) When a microSDHC card is inserted, this feature enables you to store files on the device and transfer files to another device or computer.

LED States (MC545 / MC547)

Ovation's LED indicates the status of the current connection.

LED Color		Device Status	LED Status	Description
No Light		No Power, or Incorrect Angle	—	The device is powered off The device bend angle is too narrow or too wide; return the device to its original position
Red		Initializing, or Error	Short solid: Normal startup, changes to yellow very quickly Long solid: Device error, restart the device Flashing: SIM card error	
Yellow		Searching for service	Flashing: Searching for service	
Blue		Connected, or Dual-Carrier HSPA+	Solid: Connected to a network using Dual-Carrier HSPA+ Flashing: Network found (all networks)	
Green		HSPA+, 3G, or 2G	Solid: Connected to a network using HSPA+, 3G, or 2G	
Blue/Red		Error	Alternating: Device error, contact support	

Caring for Your Device

Like any electronic device, the modem must be handled with care to ensure reliable operation. Novatel Wireless recommends the following guidelines:

- Do not apply adhesive labels to the device; they might cause the device to potentially overheat and they might alter the performance of the antenna.
- The USB connector should plug easily into your computer's standard Type A USB port. Do not force the device into a port, as doing so might damage the connector.
- Protect the device from liquids, dust, and excessive heat.
- Store the device in a safe place when not in use.
- Do not force the SIM card into the SIM card slot.

2

Using Ovation

Using the Device for the First Time
Accessing the User Guides
Using a microSDHC™ Card

Using the Device for the First Time

IMPORTANT Do not insert the device into a USB hub, as it might not provide sufficient power.

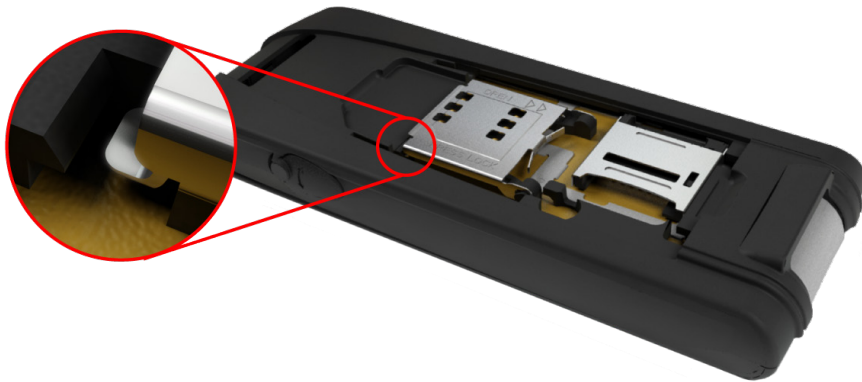
Insert the SIM Card

IMPORTANT To use Ovation MC545/MC547, you must have an account with a network operator.

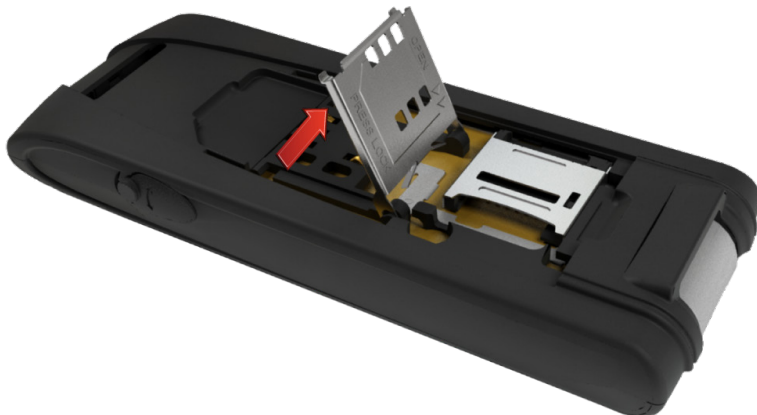
If your device was not pre-activated, your device might require account activation. If so, your network operator should have provided activation instructions. If your account needs to be activated and instructions were not provided, contact your network operator for complete instructions. [See [Activation](#) (page 10).]

Before your first use, you must install the SIM card supplied by your network operator.

- 1 Remove the cover from the back of the device by inserting a fingernail under the end of the cover closest to the USB connector and pulling toward you.
- 2 Slide the SIM card holder toward the USB connector to release the spring-loaded catch.



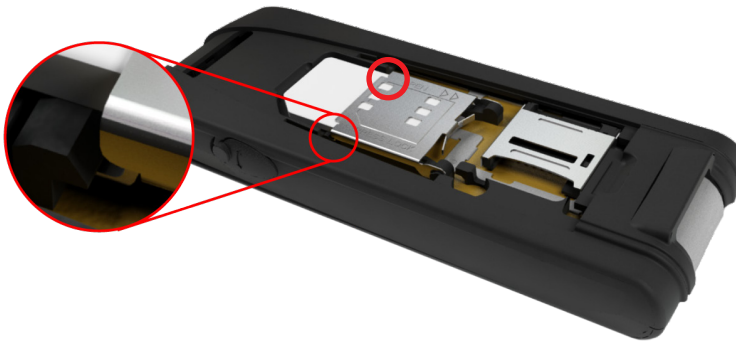
- 3 Lift the SIM card holder up with a fingernail.



- 4 Insert the SIM card so the metal contacts on the card face the metal contacts inside the device. The cut corner on the card goes in last.



- 5 Push the inserted SIM card in the SIM card holder down and then slide it back toward the spring until both sides of the SIM card holder catch.



- 6 Replace the cover.

Properly Insert the Device in Your Computer

To properly insert the device

- Gently flip open the USB connector. Hold the device along the side edges and gently insert the device into your computer's Type A USB port. The device should fit easily into the port. Do not force the device into the port as this might damage both the device and the port.

NOTE If you have difficulty inserting the device into your computer's USB port, verify that you are inserting the device in the correct orientation and you are using a Type A USB port.

Install the MobiLink Software

IMPORTANT Do not insert the device into a USB hub, as it might not provide sufficient power.

The MobiLink software configures the device and its connection manager connects the computer to the wireless broadband network.

The device includes the MobiLink software in its flash memory, so no installation CD is needed. The first time you insert the device in the computer, the following occurs:

- **Windows:** The device automatically installs MobiLink.
- **Mac:** The device opens a Finder window with an installer package.

To install the MobiLink software

- 1 Turn on your computer and close all applications.
- 2 Insert the device into your computer's USB port. [See [To properly insert the device](#) (page 8).]
 - » **Windows:** The installation program launches automatically.
 - » **Mac:** A Finder window opens to show a package icon. Double-click the icon to launch the installer.



- 3 Follow the on-screen instructions.
- 4 Mac users need to re-start the computer and then open MobiLink in the Applications folder.

Tip!

Mac users: The MobiLink Dock icon is a convenient way to open the software if you keep it in the Dock. After MobiLink is open, click and hold the MobiLink Dock icon until the Dock icon menu opens, and then select **Keep in Dock** (Tiger and Leopard) or **Options > Keep in Dock** (Snow Leopard). You can also select **Open at Login** in the Dock icon menu.

After Installation is Complete

Windows: After installation completes, Windows users see the following:

- A MobiLink shortcut is placed on the desktop
- A MobiLink status icon appears in the system tray (Windows notification area)
- The MobiLink connection manager window opens



Mac: After the computer re-starts and the MobiLink application is open, Mac users see the following:

- A MobiLink icon is placed in the Dock
- A MobiLink status icon appears on the right side of the menu bar
- The MobiLink connection manager window opens



Tip!

Mac users: The MobiLink Dock icon is a convenient way to open the software if you keep it in the Dock. After MobiLink is open, click and hold the MobiLink icon until the Dock icon menu opens, and then select **Keep in Dock** (Tiger and Leopard) or **Options > Keep in Dock** (Snow Leopard).

Connect To and Disconnect From the Network

- 1 Click the MobiLink icon to open the MobiLink software.
The connection manager opens.
- 2 To connect to the network, click **Connect**.
- 3 When you are done using the device: to disconnect from the network, click **Disconnect**.

Activation

If your account is not pre-activated, you might need to activate your device with your network operator.

If the MobiLink connection manager says **Device is not activated**, click the **Activation** button and follow the on-screen instructions.

Accessing the User Guides

You can access the User Guides on the device after the MobiLink software is installed.

To access the User Guides (Windows)

- ① Insert the device into your computer's USB port.
- ② Go to **My Computer > Devices with Removable Storage**.
- ③ Right-click the MobiLink icon in the Device with Removable Storage list.
A menu opens.
- ④ Select **Explore**.
A window opens.
- ⑤ Click to open the **Docs** folder and find the User Guides.

To access the User Guides (Mac)

- ① Insert the device into your computer's USB port.
- ② Open a Finder window.
- ③ In the left column of the Finder window, select **Ovation MC545/MC547**.
- ④ In the main Finder window, click to open the **Docs** folder and find the User Guides.

Using a microSDHC™ Card

microSDHC cards (sold separately) can add memory storage to Ovation MC545/MC547.

microSDHC Slot

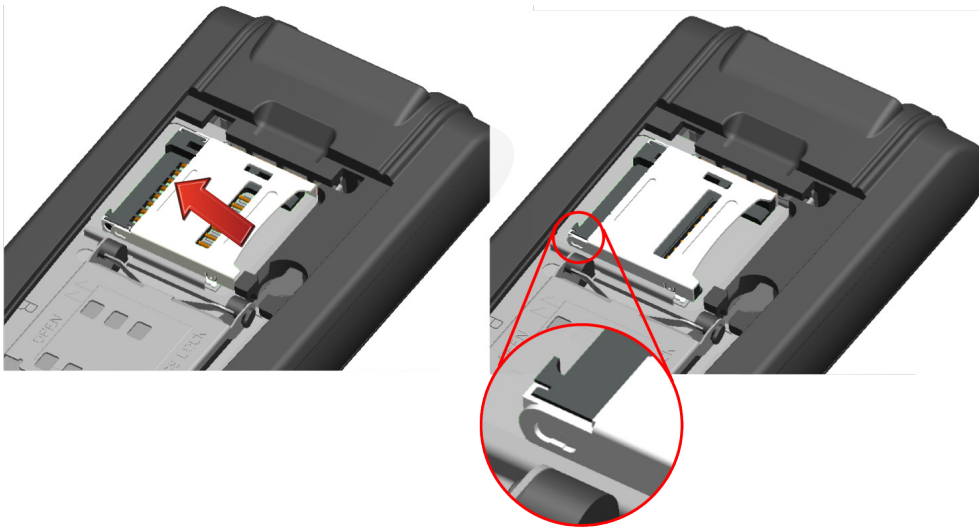
Ovation MC545/MC547 is equipped with removable memory storage. This feature enables you to simultaneously connect to the Internet, access your corporate VPN on the fly, and store data on the device without needing another flash drive.

A microSDHC card is required to take advantage of the memory storage feature and is available in high-capacity sizes. [See [Data Storage](#) (page 22).]

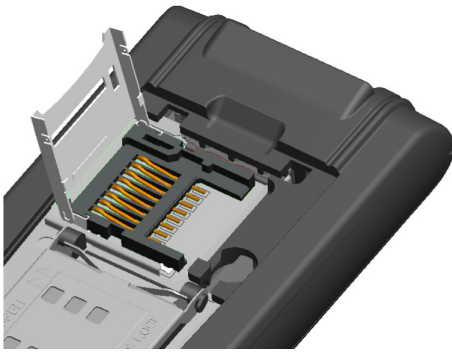
Inserting and Removing a microSDHC Card

To insert a microSDHC card

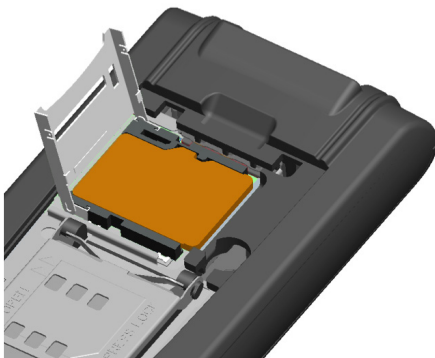
- 1 Remove the cover from the back of the device by inserting a fingernail under the end of the cover closest to the USB connector and pulling toward you.
- 2 Slide the microSDHC card holder to the side to release the catch.



- 3 Lift the microSDHC card holder up with a fingernail.



- 4 Place the microSDHC card in the holder. Be sure the metal contacts on the card face the metal contacts inside the device. Also be sure the shape of the card matches the holder exactly.



- 5 Push the microSDHC card holder down and then slide it forward until the holder catches. Be sure the card is locked in place.



- 6 Replace the cover.

To remove a microSDHC card

- ▶ Remove the cover and follow the insertion steps in reverse. Use your fingernail only; do not use sharp objects to remove the card.

Saving Files to microSDHC

The process of saving files to the microSDHC memory card is similar to saving files to any external flash drive inserted in your computer. A microSDHC card with sufficient free space must be inserted in the device. [See [To properly insert the device](#) (page 8)].

To download files directly to the device

- 1 When you download a file, a **Save to** dialog opens. In the **Save to** dialog, click the down arrow to view the contents of the drop-down menu.
- 2 Select **Ovation MC545/MC547**.
 - » **Windows:** The device typically appears as a removable storage device with an assigned drive letter for identification.
 - » **Mac:** The device typically appears in the Devices list on the left side of the Finder window, or as a disk image on the desktop.
- 3 Type a name for the file you are saving to the device and click **Save**.

To save files from an application

- 1 When saving files directly from an application to the device, go to **File > Save As**. In the **Save As** window, click the down arrow.
- 2 Select **Ovation MC545/MC547**.
 - » **Windows:** The device typically appears as a removable storage device with an assigned drive letter for identification.
 - » **Mac:** The device typically appears in the Devices list on the left side of the Finder window, or as a disk image on the desktop.
- 3 In the **Save As** field, type a name for the file you are saving to the device and then click **Save**.

To drag/drop – copy/paste

- 1 Locate **Ovation MC545/MC547**.
 - » **Windows:** The device typically appears as a removable storage device with an assigned drive letter for identification.
 - » **Mac:** The device typically appears in the Devices list on the left side of the Finder window, or as a disk image on the desktop.
- 2 Double-click the device to open a window and view the contents.
- 3 Drag or paste files into the Ovation MC545/MC547 window.

To open files from the microSDHC card

- ① Locate the device.
 - » **Windows:** The device typically appears as a removable storage device with an assigned drive letter for identification.
 - » **Mac:** The device typically appears in the Devices list on the left side of the Finder window, or as a disk image on the desktop.
- ② Double-click the device to open a window and view the contents.
- ③ Double-click to open the file.

Troubleshooting

Overview
Common Problems and Solutions
Support

Overview

When properly installed, Ovation MC545/MC547 is a highly reliable product. Most problems are caused by one of these issues.

- System resources required by the modem are being used by other devices.
- Network coverage is unavailable due to coverage area, an account problem, or a network problem.

The following tips can help solve many common problems encountered while using the device.

First Steps

- Make sure you are using the device in the correct geographic region.
- Ensure that your network operator's wireless coverage extends to your current location.
- Ensure you have an active subscription plan from your network operator.
- Re-starting your computer and your modem can resolve many issues.

IMPORTANT Before contacting support, be sure to re-start your computer and re-insert the device.

Common Problems and Solutions

The following are some common problems and solutions.

My computer does not start if the device is inserted. I experience an error or a blank screen.

- Remove the device and re-start the computer. The device contains internal memory which behaves like a CD-ROM. Some computers, depending on the system BIOS settings, might try to start from the device's internal memory instead of the hard drive. The computer might show a black screen with a cursor or an error message about a non-bootable disk. This behavior is similar to using any non-bootable CD in your CD-ROM drive.

I cannot install the software

- You might not have administrator privileges.
 1. Contact your system administrator (if applicable).
 2. Log on to your computer as an administrator, or create a user account with administrator privileges.

I still cannot connect to the network after trying First Steps [See [First Steps](#) (page 17).]

- Your Connection Type in the active connection profile might be incorrect. Consult the MobiLink User Guide for more information.
- Your access point name (APN) settings, username, or password in the active connection profile might be incorrect. Consult the MobiLink User Guide for more information.

Support

IMPORTANT Before contacting support, be sure to re-start your computer and re-insert the device.

For more information about your device, please visit www.novatelwireless.com.

Product Specifications and Regulatory Information

Product Specifications
Regulatory Statements
Wireless Communications
Limited Warranty and Liability
Safety Hazards

Product Specifications

Technology/Bands

- Dual-Carrier HSPA+
- HSPA+/HSPA/UMTS — 900/1900/2100 MHz (MC545)
- HSPA+/HSPA/UMTS — 850/1900/2100 MHz (MC547)
- Quad-band GPRS/EDGE — 850/900/1800/1900 MHz

Data Speeds

- Dual-Carrier HSPA+ Downlink (42 Mbps), Uplink (5.75 Mbps)
- HSPA+ Downlink Cat 14 (21 Mbps)
- HSPA+ Release 7 Uplink Cat 6 (5.76 Mbps)
- HSDPA Release 5 downlink Cat 10 (14 Mbps-ready; firmware update required)
- HSUPA Release 6 Uplink Cat 6 (5.76 Mbps)
- UMTS (384 kbps)
- GPRS/EDGE multi-slot class 12 (up to 237 kbps)

Advanced Technologies

- Receiver Equalization — Improves performance in noisy and highly mobile environments
- Receiver Diversity — Improves performance at cell edges and in buildings

Power Class

- UMTS 850/1900 — Power Class 3
- GPRS 1800/1900 — Power Class 1
- GPRS 850/900 — Power Class 4
- EDGE 850/900/1800/1900 — Power Class E2

Dimensions and Weight

- 82 mm x 30 mm x 11 mm (LxWxH)
- 24 g

Form Factor

- USB Dongle
- USIM card slot (card size: 25 mm x 15 mm)

Embedded Installer, No CD

- MobiLink software is embedded in flash memory for Windows and Mac.

Data Storage

- The device supports microSDHC cards up to 32 GB.

Regulatory Statements

CE Marking

CE 0682

This device has been tested to and conforms to the regulatory requirements of the European Union and has attained CE Marking. The CE Mark is a conformity marking consisting of the letters “CE”. The CE Mark applies to products regulated by certain European health, safety and environmental protection legislation. The CE Mark is obligatory for products it applies to: the manufacturer affixes the marking in order to be allowed to sell his product in the European market.

This product conforms to the essential requirements of the R&TTE directive 1999/5/EC in order to attain CE Marking. A notified body has determined that this device has properly demonstrated that the requirements of the directive have been met and has issued a favorable certificate of expert opinion. As such the device will bear the notified body number 0682 after the CE mark.

The CE Marking is not a quality mark. Foremost, it refers to the safety rather than to the quality of a product.

Secondly, CE Marking is mandatory for the product it applies to, whereas most quality markings are voluntary.

Marking: The product shall bear the CE mark, the notified body number(s) as depicted on this page.

Federal Communications Commission Notice (FCC – United States)



This equipment has been tested to, and found to be within the acceptable limits for a Class B digital device, pursuant to part 15 of the FCC Rules and Industry Canada ICES-003. These limits are designed to provide reasonable protection against harmful interference when the equipment is operated in a residential environment. This equipment generates radio frequency energy and is designed for use in accordance with the manufacturer's user manual. However, there is no guarantee that interference will not occur in any particular installation. If this equipment causes harmful interference to radio or television reception, which can be determined by turning the equipment off and on, you are encouraged to try to correct the interference by one or more of the following measures.

- Reorient or relocate the receiving antenna
- Increase the separation between the equipment and the receiver
- Consult the dealer or an experienced radio/television technician for help

This device complies with Part 15 of the Federal Communications Commission (FCC) Rules and Industry Canada ICES-003. Operation is subject to the following two conditions:

- This device may not cause harmful interference.
- This device must accept any interference received, including interference that may cause undesired operation.

WARNING: DO NOT ATTEMPT TO SERVICE THE WIRELESS COMMUNICATION DEVICE YOURSELF. SUCH ACTION MAY VOID THE WARRANTY. THE DEVICE IS FACTORY TUNED. NO CUSTOMER CALIBRATION OR TUNING IS REQUIRED. CONTACT YOUR SERVICE PROVIDER FOR INFORMATION ABOUT SERVICING YOUR WIRELESS COMMUNICATION DEVICE.

Notice to Consumers: Any changes or modification not expressly approved by the party responsible for compliance could void the user's authority to operate this equipment.

NOTE: The Radio Frequency (RF) emitter installed in your modem must not be located or operated in conjunction with any other antenna or transmitter, unless specifically authorized by Novatel Wireless Technologies.

MODIFICATIONS: Any changes or modification not expressly approved by Novatel Wireless, Inc. could void the user's authority to operate this equipment. The FCC has granted an Equipment Authorization for this wireless modem with all reported SAR levels evaluated as in compliance with the FCC RF exposure guidelines.

FCC Equipment Authorization ID: NBZNRM-MC545, NBZNRM-MC547

In order to comply with FCC RF exposure requirements, the device must be installed so that a minimum separation distance of 0.5 cm (0.2") is maintained between the antenna and all persons during ordinary operating conditions.

Wireless Communications

IMPORTANT Due to the transmission and reception properties of wireless communications, data occasionally can be lost or delayed.

Data loss or delay can be caused by variation in radio signal strength that results from changes in the characteristics of the radio transmission path. Although data loss is rare, the environment where you operate the modem may adversely affect communications.

Novatel Wireless or its partners will not be held responsible for damages of any kind resulting from the delays or errors in data transmitted or received with Ovation MC545/MC547, or failure of Ovation MC545/MC547 to transmit or receive such data.

Limited Warranty and Liability

Novatel Wireless warrants for the 12 month period immediately following receipt of the Product by Purchaser that the Product will be free from defects in material and workmanship under normal use. THESE WARRANTIES ARE EXPRESSLY IN LIEU OF ALL OTHER WARRANTIES, EXPRESS OR IMPLIED, INCLUDING, WITHOUT LIMITATION, ALL IMPLIED WARRANTIES OF MERCHANTABILITY AND FITNESS FOR A PARTICULAR PURPOSE.

The exclusive remedy for a claim under this warranty shall be limited to the repair or replacement, at Novatel Wireless' option, of defective or non-conforming materials, parts or components. The foregoing warranties do not extend to (I) non conformities, defects or errors in the Products due to accident, abuse, misuse or negligent use of the Products or use in other than a normal and customary manner, environmental conditions not conforming to Novatel Wireless' specification, of failure to follow prescribed installation, operating and maintenance procedures, (II) defects, errors or nonconformity's in the Product due to modifications, alterations, additions or changes not made in accordance with Novatel Wireless' specifications or authorized by Novatel Wireless, (III) normal wear and tear, (IV) damage caused by force of nature or act of any third person, (V) shipping damage, (VI) service or repair of Product by the purchaser without prior written consent from Novatel Wireless, (VII) products designated by Novatel Wireless as beta site test samples, experimental, developmental, reproduction, sample, incomplete or out of specification Products, or (VIII) returned products if the original identification marks have been removed or altered.

Safety Hazards

Do not operate the device in an environment that might be susceptible to radio interference resulting in danger, specifically:

Areas Where Prohibited by the Law

Follow any special rules and regulations and obey all signs and notices. Always turn off the host device and remove the device from the computer when instructed to do so, or when you suspect that it may cause interference or danger.

Where Explosive Atmospheres Might be Present

Do not operate the device in any area where a potentially explosive atmosphere may exist. Sparks in such areas could cause an explosion or fire resulting in bodily injury or even death. Be aware and comply with all signs and instructions.

Users are advised not to operate the device while at a refueling point or service station. Users are reminded to observe restrictions on the use of radio equipment in fuel depots (fuel storage and distribution areas), chemical plants, or where blasting operations are in progress.

Areas with a potentially explosive atmosphere are often but not always clearly marked. Potential locations can include gas stations, below deck on boats, chemical transfer or storage facilities, vehicles using liquefied petroleum gas (such as propane or butane), areas where the air contains chemicals or particles, such as grain, dust or metal powders, and any other area where you would normally be advised to turn off your vehicle engine.

Near Medical and Life Support Equipment

Do not operate the device in any area near medical equipment or life support equipment, or near any equipment that may be susceptible to any form of radio interference. In such areas, the host communications device must be turned off. The device may transmit signals that could interfere with this equipment.

On an Aircraft, Either on the Ground or Airborne

In addition to United States FAA requirements, many airline regulations state that you must suspend wireless operations before boarding an airplane. Please ensure that the host device is turned off and the device is removed from the computer prior to boarding aircraft in order to comply with these regulations. The device can transmit signals that could interfere with various onboard systems and controls.

While Operating a Vehicle

The driver or operator of any vehicle should not operate a wireless data device while in control of a vehicle. Doing so detracts from the driver or operator's control and operation of that vehicle. In some countries, operating such communications devices while in control of a vehicle is an offense.

Electrostatic Discharge (ESD)

Electrical and electronic devices are sensitive to electrostatic discharge (ESD). Macintosh native connection software may attempt to reinitialize the device should a substantial electrostatic discharge reset the device. If the software is not operational after an ESD occurrence, then re-start your computer.

Glossary

Glossary

- **APN** — Access point name.
- **bps** — Bits per second—rate of data flow.
- **Broadband** — High-capacity high-speed, transmission channel with a wider bandwidth than conventional modem lines. Broadband channels can carry video, voice, and data simultaneously.
- **EDGE** — Enhanced Data Rates for GSM Evolution. EDGE is a wireless broadband technology with an average speed of 400 kbps.
- **Firewall** — A hardware or software boundary that protects a network or single computer from unwanted outside traffic.
- **GPRS** — General Packet Radio Service. GPRS is a wireless broadband technology with speeds from 56-114 kbps.
- **Hot-Swappable** — The ability to remove and replace the microSDHC card from the device while it is still connected to the computer and online without damaging the device.
- **HSDPA** — High Speed Downlink Packet Access. HSDPA is an enhanced version of WCDMA that supports broadband connections with download speeds up to 7.2 Mbps. This enhanced 3G technology enables the download of high-bandwidth multimedia files, high resolution graphics, and other complex files, and viewing email attachments at broadband-like speeds.
- **HSPA+** — HSPA Evolution or HSPA Evolved. A 3G mobile telephony protocol with up-link speeds up to 11 Mbps and downlink speeds up to 42 Mbps.
- **HSUPA** — High Speed Uplink Packet Access. A 3G mobile telephony protocol with data rates of 7.2 Mbps downlink and 5.76 Mbps uplink.
- **ISP** — Internet Service Provider. Also referred to as the service carrier, an ISP provides Internet connection service.
- **Kbps** — Kilobits per second—rate of data flow.
- **LAN** — Local Area Network. A data network confined to limited area with moderate to high data rates. Does not use common carrier circuits, although may have gateways or bridges to other public or private networks.
- **Mbps** — Megabits per second—rate of data flow.
- **MicroSDHC** — Additional external memory for your device.
- **MicroSDHC Card** — A small, removable flash memory card available in various storage sizes. This accessory is sold separately.
- **MicroSDHC Slot** — A built-in slot on your device that is designed specifically for a microSDHC card.
- **PPP** — Point-to-Point Protocol. A method of connecting a computer to the Internet.
- **Proxy** — A firewall mechanism that replaces the IP address of a host on the internal (protected) network with its own IP address for all traffic passing through it.

- **SMS** — Short Messaging Service. Short text messages of up to 160 characters sent and received by wireless devices.
- **TCP/IP** — Transmission Control Protocol/Internet Protocol. The set of communications protocols used for Internet and other similar protocols.
- **Type A USB** — The USB ports on computers and hubs have a rectangular Type A socket, and peripheral devices have a cable with a Type A plug. Peripherals that do not have an attached cable have a square Type B socket on the device and a separate cable with a Type A and Type B plug.
- **UMTS** — Universal Mobile Telecommunications Service. A third-generation broadband, packet-based transmission of text, digitized voice, video and multimedia at data rates up to 2 Mbps. UMTS offers a consistent set of services to mobile users all over the world. UMTS is based on the GSM standard. Until UMTS is fully implemented, users can use multi-mode devices that switch to currently available technology.
- **USB** — Universal Serial Bus. A connection type for computing device peripherals such as a printer, mobile broadband modem, etc. USB can be found in versions 1.1 and 2.0. They are further split into speed categories: Low-Speed, Full-Speed, and High-Speed (v2.0 only). To make use of the maximum speed of the device, v2.0 High-Speed is required. Check your computer to see what version is fitted. The device will work on Full-Speed connections, but will be unable to operate at peak rates.
- **VPN** — Virtual Private Network. A way to communicate through a dedicated server securely to a corporate network over the Internet.
- **WAN** — Wide Area Network (WAN). A computer network covering a broad geographical area. WANs are used to connect local area networks (LANs) together, so that users and computers in one location can communicate with users and computers in other locations.
- **WCDMA** — Wideband Code Division Multiple Access. A 3G mobile wireless technology that promises much higher data speeds to mobile and portable wireless devices. Another name for UMTS.
- **WWAN** — Wireless Wide Area Network (WWAN). Also called “wireless broadband” or “broadband wireless,” wireless WANs (WWANs) use cellular towers to transmit a wireless signal over a range of several miles to a mobile device compared to wireless Wi-Fi LANs (WLANs), which span only a few hundred feet and generally to only stationary devices.