

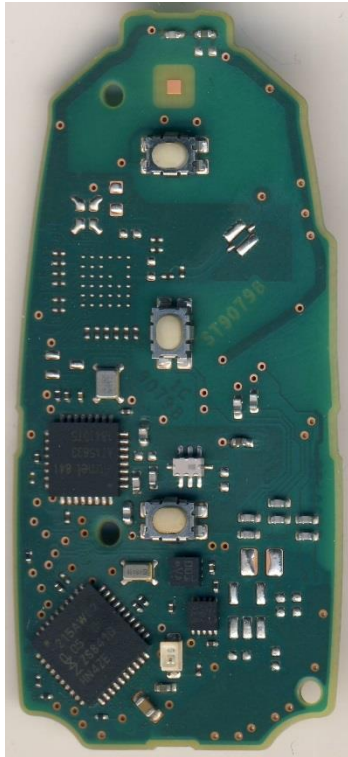


HELLA GmbH & Co. KGaA
59552 Lippstadt

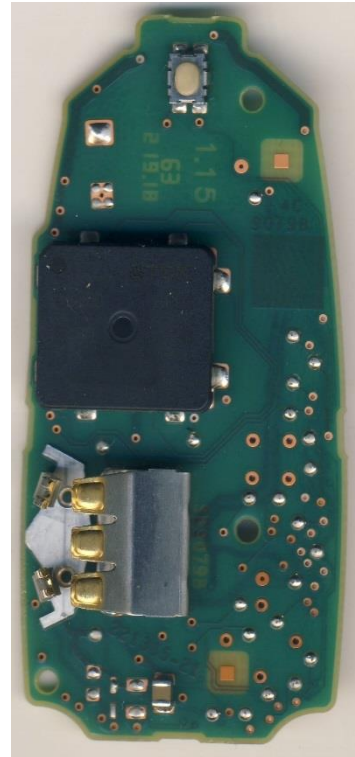
FS1971

5 FS1971 PCB photographs

The following photographs show the printed circuit board of the FS1971 devices with all 4 buttons and both sensors IC300 and IC310 assembled. Other versions using the same PCB with fewer buttons assembled or using different button positions will exist. In the series production devices either sensor IC300 or sensor IC310 or none of them (not both) will be assembled.



Picture 6: FS1971 PCB top side



Picture 7: FS1971 PCB bottom side

This document is confidential. Its contents are not to be exploited, passed on or disclosed to third parties without our express permission. All rights are reserved.