

FCC Test Report

Product Name : 802.11B/G/N SDIO Module with Antenna Connectors
Model No. : ARGOX-SDM-802.11 BGN

Applicant : Argox Information Co.,Ltd.
Address : 7F,NO.126,Lane 235,Pao-Chiao Rd., Hsin Tien, Taipei, Taiwan

Date of Receipt : 2012/12/20
Issued Date : 2013/03/06
Report No. : 131012R-HPUSP09V01
Report Version : V1.0



The test results relate only to the samples tested.

The test report shall not be reproduced except in full without the written approval of Quietek Corporation.

Test Report Certification

Issued Date: 2013/03/06

Report No.: 131012R-HPUSP09V01



Product Name : 802.11B/G/N SDIO Module with Antenna Connectors
 Applicant : Argox Information Co.,Ltd.
 Address : 7F,NO.126,Lane 235,Pao-Chiao Rd., Hsin Tien, Taipei, Taiwan
 Manufacturer : Argox Information Co.,Ltd.
 Model No. : ARGOX-SDM-802.11 BGN
 Trade Name : ARGOX
 FCC ID : NBF-SDMN
 Applicable Standard : FCC Oet65 Supplement C June 2001
 IEEE Std. 1528-2003
 47CFR § 2.1093
 Measurement : KDB 447498 D01 & D02 , KDB 248227, KDB 865664
 procedures
 Test Result : Max. SAR Measurement (1g)
0.797 W/kg
 Application Type : Certification
 The test results relate only to the samples tested.
 The test report shall not be reproduced except in full without the written approval of Quie Tek Corporation.

Documented By : April Chen
 (Adm. Assistant / April Chen)

Tested By : wenLee
 (Engineer / Wen Lee)

Approved By : Vincent Lin
 (Manager / Vincent Lin)

TABLE OF CONTENTS

| Description | Page |
|--|-----------|
| 1. General Information..... | 5 |
| 1.1 EUT Description | 5 |
| 1.2 Antenna List..... | 6 |
| 1.3 Maximum output power and tolerance allowed for production units..... | 6 |
| 1.4 Test Environment..... | 7 |
| 2. SAR Measurement System | 8 |
| 2.1 DASY5 System Description | 8 |
| 2.1.1 Applications | 9 |
| 2.1.2 Area Scans..... | 9 |
| 2.1.3 Zoom Scan (Cube Scan Averaging)..... | 9 |
| 2.1.4 Uncertainty of Inter-/Extrapolation and Averaging..... | 9 |
| 2.2 DASY5 E-Field Probe | 10 |
| 2.2.1 Isotropic E-Field Probe Specification | 10 |
| 2.3 Boundary Detection Unit and Probe Mounting Device..... | 11 |
| 2.4 DATA Acquisition Electronics (DAE) and Measurement Server | 11 |
| 2.5 Robot..... | 12 |
| 2.6 Light Beam Unit..... | 12 |
| 2.7 Device Holder | 13 |
| 2.8 SAM Twin Phantom | 13 |
| 3. Tissue Simulating Liquid | 14 |
| 3.1 The composition of the tissue simulating liquid | 14 |
| 3.2 Tissue Calibration Result | 14 |
| 3.3 Tissue Dielectric Parameters for Head and Body Phantoms | 15 |
| 4. SAR Measurement Procedure | 16 |
| 4.1 SAR System Check..... | 16 |
| 4.1.1 Dipoles | 16 |
| 4.1.2 System Check Result | 16 |
| 4.2 SAR Measurement Procedure..... | 17 |
| 5. SAR Exposure Limits | 18 |
| 6. Test Equipment List..... | 19 |
| 7. Measurement Uncertainty | 20 |
| 8. Conducted Power Measurement | 21 |
| 9. Test Results..... | 22 |
| 9.1 SAR Test Results Summary | 22 |
| 10. SAR measurement variability | 25 |

Appendix.....26
Appendix A. SAR System Check Data
Appendix B. SAR measurement Data
Appendix C. Test Setup Photographs & EUT Photographs
Appendix D. Probe Calibration Data
Appendix E. Dipole Calibration Data

1. General Information

1.1 EUT Description

| | |
|----------------------------------|--|
| Product Name | 802.11B/G/N SDIO Module with Antenna Connectors |
| Trade Name | ARGOX |
| Model No. | ARGOX-SDM-802.11 BGN |
| FCC ID | NBF-SDMN |
| TX Frequency | 2412MHz~2462MHz |
| Wlan Modular | MFR: ARGOX, M/N: ARGOX-SDM-802.11 BGN |
| Type of Modulation | DSSS/OFDM/BPSK/QPSK/16QAM/64QAM |
| Antenna Type | PIFA |
| Device Category | Portable |
| RF Exposure Environment | Uncontrolled |
| Max. Output Power (Conducted) | 802.11b: 16.82 dBm 802.11g: 15.84 dBm 802.11n: 15.41 dBm |

Note : There are different host on No1, No2 & No3 which individual to evaluated exposure value on this report.

| No. | Model Number | Antenna | | Scan tech |
|-----|--------------|----------------------|------------------|-----------|
| 1 | PA-6030 | (1) AQ060WIPI01+A | (2) 69-70002-001 | N/A |
| 2 | PT-9130-1-1 | (1) 69-70003-006 | (2) 69-70003-001 | Laser |
| | PT-9230-1-1 | (1) 69-70003-006 | (2) 69-70003-001 | 2D |
| 3 | PT-9132-0-0 | ALB120-052020-150052 | | Laser |
| | PT-9232-0-0 | ALB120-052020-150052 | | 2D |

1.2 Antenna List

| No. | Manufacturer | Part No. | Antenna Type | Peak Gain |
|-----|-----------------------|----------------------|--------------|----------------------|
| 1 | Ji-Haw | 69-70002-001 | PIFA | 3.48 dBi for 2.4 GHz |
| 2 | Ji-Haw | 69-70003-001 | PIFA | 3.23 dBi for 2.4 GHz |
| 3 | LYNwave | ALB120-052020-150052 | PIFA | 2.70 dBi for 2.4 GHz |
| 4 | Wgt | AQ060WIP101+A | PIFA | 4.36 dBi for 2.4 GHz |
| 5 | Aristotle Enterprises | 69-70003-006 | PIFA | 3.40 dBi for 2.4 GHz |

1.3 Maximum output power and tolerance allowed for production units

| Band | Mode | Nominal power (dBm) | Tolerance (dBm) | Upper Tolerance (dBm) |
|------|------------------------------------|---------------------|-----------------|-----------------------|
| 2.4G | 802.11b Ch1, 802.11n(20M) Ch6 | 14.5 | ±1 | 15.5 |
| 2.4G | 802.11b Ch6, 802.11g/n(20M) Ch1&11 | 13.5 | ±1 | 14.5 |
| 2.4G | 802.11b Ch11 | 16 | ±1 | 17 |
| 2.4G | 802.11g Ch6 | 15 | ±1 | 16 |

1.4 Test Environment

Ambient conditions in the laboratory:

Test Date: Jan 23, 2013

| Items | Required | Actual |
|------------------|----------|---------|
| Temperature (°C) | 18-25 | 21.9± 2 |
| Humidity (%RH) | 30-70 | 52 |

Test Date: Feb 26, 2013

| Items | Required | Actual |
|------------------|----------|---------|
| Temperature (°C) | 18-25 | 21.9± 2 |
| Humidity (%RH) | 30-70 | 51 |

Site Description:

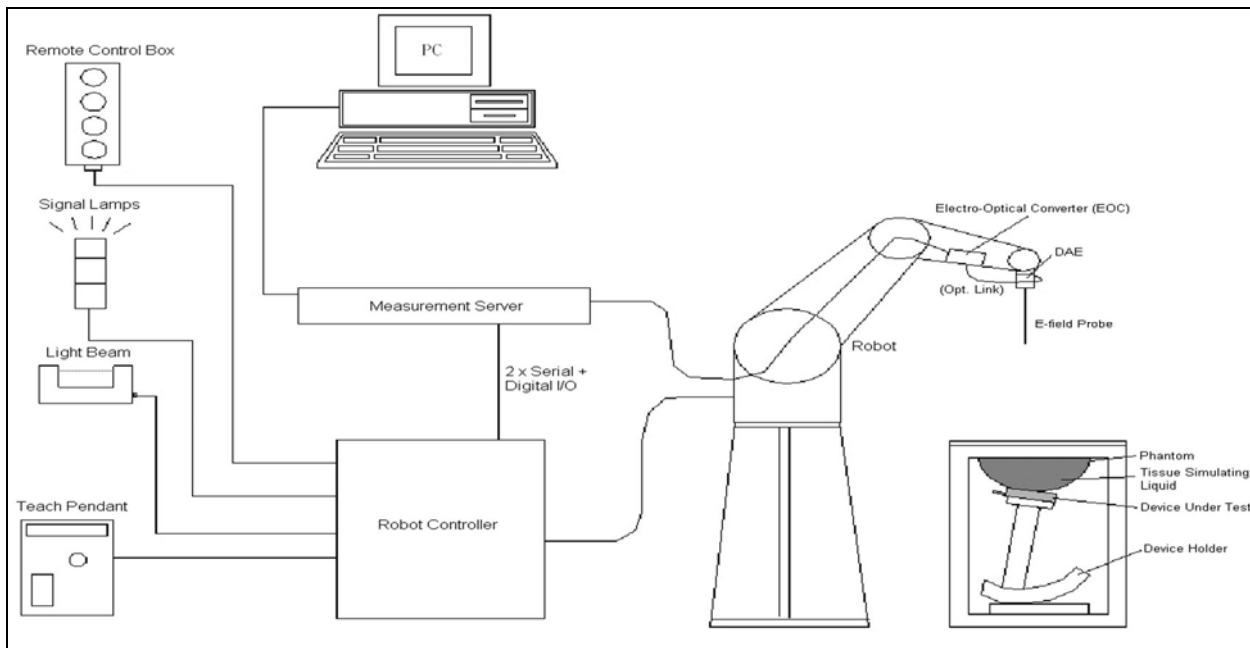
Accredited by TAF
 Accredited Number: 0914
 Effective through: December 12, 2014

Site Name: Quietek Corporation

Site Address: No. 5-22, Rueishu Keng, Linkou Dist.,
 New Taipei City 24451,
 Taiwan. R.O.C.
 TEL: 886-2-8601-3788 / FAX: 886-2-8601-3789
 E-Mail: service@quietek.com

2. SAR Measurement System

2.1 DASY5 System Description



The DASY5 system for performing compliance tests consists of the following items:

- A standard high precision 6-axis robot with controller, teach pendant and software. An arm extension for accommodating the data acquisition electronics (DAE).
- A data acquisition electronics (DAE) which performs the signal amplification, signal multiplexing, AD-conversion, offset measurements, mechanical surface detection, collision detection, etc. The unit is battery powered with standard or rechargeable batteries. The signal is optically transmitted to the EOC.
- The Electro-optical converter (EOC) performs the conversion from optical to electrical signals for the digital communication to the DAE. To use optical surface detection, a special version of the EOC is required. The EOC signal is transmitted to the measurement server.
- The Light Beam used is for probe alignment. This improves the (absolute) accuracy of the probe positioning.
- A computer running WinXP and the DASY5 software.
- Remote control and teach pendant as well as additional circuitry for robot safety such as warning lamps, etc.
- The phantom, the device holder and other accessories according to the targeted measurement.

2.1.1 Applications

Predefined procedures and evaluations for automated compliance testing with all worldwide standards, e.g., IEEE 1528, OET 65, IEC 62209-1, IEC 62209-2, EN 50360, EN 50383 and others.

2.1.2 Area Scans

Area scans are defined prior to the measurement process being executed with a user defined variable spacing between each measurement point (integral) allowing low uncertainty measurements to be conducted. Scans defined for FCC applications utilize a 10mm² step integral, with 1mm interpolation used to locate the peak SAR area used for zoom scan assessments.

When an Area Scan has measured all reachable points, it computes the field maxima found in the scanned area, within a range of the global maximum. The range (in dB) is specified in the standards for compliance testing. For example, a 2 dB range is required in IEEE 1528-2003, EN 50361 and IEC 62209 standards, whereby 3 dB is a requirement when compliance is assessed in accordance with the ARIB standard (Japan).

2.1.3 Zoom Scan (Cube Scan Averaging)

Zoom Scans are used to assess the peak spatial SAR values within a cubic averaging volume containing 1 g and 10 g of simulated tissue. A density of 1000 kg/m³ is used to represent the head and body tissue density and not the phantom liquid density, in order to be consistent with the definition of the liquid dielectric properties, i.e. the side length of the 1 g cube is 10mm, with the side length of the 10 g cube 21,5mm.

The zoom scan integer steps can be user defined so as to reduce uncertainty, but normal practice for typical test applications (including FCC) utilize a physical step of 5x5x7 (8mmx8mmx5mm) providing a volume of 32mm in the X & Y axis, and 30mm in the Z axis.

2.1.4 Uncertainty of Inter-/Extrapolation and Averaging

In order to evaluate the uncertainty of the interpolation, extrapolation and averaged SAR calculation algorithms of the Postprocessor, DASY5 allows the generation of measurement grids which are artificially predefined by analytically based test functions. Therefore, the grids of area scans and zoom scans can be filled with uncertainty test data, according to the SAR benchmark functions of IEEE 1528. The three analytical functions shown in equations as below are used to describe the possible range of the expected SAR distributions for the tested handsets. The field gradients are covered by the spatially flat

distribution f1, the spatially steep distribution f3 and f2 accounts for H-field cancellation on the phantom/tissue surface.

$$f_1(x, y, z) = Ae^{-\frac{z}{2a}} \cos^2 \left(\frac{\pi \sqrt{x'^2 + y'^2}}{5a} \right)$$


$$f_2(x, y, z) = Ae^{-\frac{z}{a}} \frac{a^2}{a^2 + x'^2} \left(3 - e^{-\frac{2z}{a}} \right) \cos^2 \left(\frac{\pi y'}{2 \cdot 3a} \right)$$

$$f_3(x, y, z) = A \frac{a^2}{\frac{a^2}{4} + x'^2 + y'^2} \left(e^{-\frac{2z}{a}} + \frac{a^2}{2(a + 2z)^2} \right)$$

2.2 DASY5 E-Field Probe

The SAR measurement is conducted with the dosimetric probe manufactured by SPEAG. The probe is specially designed and calibrated for use in liquid with high permittivity. The dosimetric probe has special calibration in liquid at different frequency. SPEAG conducts the probe calibration in compliance with international and national standards (e.g. IEEE 1528, EN 62209-1, IEC 62209, etc.) under ISO 17025. The calibration data are in Appendix D.

2.2.1 Isotropic E-Field Probe Specification

| | | |
|----------------------|--|---|
| Model | Ex3DV4 | |
| Construction | Symmetrical design with triangular core Built-in shielding against static charges PEEK enclosure material (resistant to organic solvents, e.g., DGBE) | |
| Frequency | 10 MHz to 6 GHz Linearity: ± 0.2 dB (30 MHz to 6 GHz) |  |
| Directivity | ± 0.3 dB in HSL (rotation around probe axis) ± 0.5 dB in tissue material (rotation normal to probe axis) | |
| Dynamic Range | 10 µW/g to 100 mW/g Linearity: ± 0.2 dB (noise: typically < 1 µW/g) | |
| Dimensions | Overall length: 330 mm (Tip: 20 mm) Tip diameter: 2.5 mm (Body: 12 mm) Typical distance from probe tip to dipole centers: 1 mm | |
| Application | High precision dosimetric measurements in any exposure scenario (e.g., very strong gradient fields). Only probe which enables compliance testing for frequencies up to 6 GHz with precision of better 30%. | |

2.3 Boundary Detection Unit and Probe Mounting Device

The DASY probes use a precise connector and an additional holder for the probe, consisting of a plastic tube and a flexible silicon ring to center the probe. The connector at the DAE is flexibly mounted and held in the default position with magnets and springs. Two switching systems in the connector mount detect frontal and lateral probe collisions and trigger the necessary software response.



2.4 DATA Acquisition Electronics (DAE) and Measurement Server

The data acquisition electronics (DAE) consists of a highly sensitive electrometer-grade preamplifier with auto-zeroing, a channel and gain-switching multiplexer, a fast 16 bit AD-converter and a command decoder and control logic unit.

Transmission to the measurement server is accomplished through an optical downlink for data and status information as well as an optical uplink for commands and the clock.

The input impedance of the DAE4 is 200M Ohm; the inputs are symmetrical and floating. Common mode rejection is above 80dB.



The DASY5 measurement server is based on a PC/104 CPU board with a 400MHz intel ULV Celeron, 128MB chipdisk and 128MB RAM. The necessary circuits for communication with the DAE electronics box, as well as the 16 bit AD converter system for optical detection and digital I/O interface are contained on the DASY5 I/O board, which is directly connected to the PC/104 bus of the CPU board.



2.5 Robot

The DASY5 system uses the high precision robots TX90 XL type out of the newer series from Stäubli SA (France). For the 6-axis controller DASY5 system, the CS8C robot controller version from Stäubli is used.

The XL robot series have many features that are important for our application:

- High precision (repeatability 0.02 mm)
- High reliability (industrial design)
- Jerk-free straight movements
- Low ELF interference (the closed metallic construction shields against motor control fields)
- 6-axis controller



2.6 Light Beam Unit

The light beam switch allows automatic "tooling" of the probe. During the process, the actual position of the probe tip with respect to the robot arm is measured, as well as the probe length and the horizontal probe offset. The software then corrects all movements, such that the robot coordinates are valid for the probe tip.

The repeatability of this process is better than 0.1 mm. If a position has been taught with an aligned probe, the same position will be reached with another aligned probe within 0.1 mm, even if the other probe has different dimensions. During probe rotations, the probe tip will keep its actual position.



2.7 Device Holder

The DASY5 device holder is designed to cope with different positions given in the standard. It has two scales for the device rotation (with respect to the body axis) and the device inclination (with respect to the line between the ear reference points). The rotation center for both scales is the ear reference point (EPR).

Thus the device needs no repositioning when changing the angles.

The DASY5 device holder has been made out of low-loss POM material having the following dielectric parameters: relative permittivity $\epsilon_r = 3$ and loss tangent $\delta = 0.02$. The amount of dielectric material has been reduced in the closest vicinity of the device, since measurements have suggested that the influence of the clamp on the test results could thus be lowered.



2.8 SAM Twin Phantom

The SAM twin phantom is a fiberglass shell phantom with 2mm shell thickness (except the ear region where shell thickness increases to 6mm). It has three measurement areas:

- Left head
- Right head
- Flat phantom



The bottom plate contains three pair of bolts for locking the device holder. The device holder positions are adjusted to the standard measurement positions in the three sections. A white cover is provided to tap the phantom during off-periods to prevent water evaporation and changes in the liquid parameters. On the phantom top, three reference markers are provided to identify the phantom position with respect to the robot.

3. Tissue Simulating Liquid

3.1 The composition of the tissue simulating liquid

| INGREDIENT (% Weight) | 900MHz Head | 1800MHz Head | 2450MHz Head | 2450MHz Body |
|--------------------------|----------------|-----------------|-----------------|-----------------|
| Water | -- | -- | -- | 73.2 |
| Salt | -- | -- | -- | 0.04 |
| Sugar | -- | -- | -- | 0.00 |
| HEC | -- | -- | -- | 0.00 |
| Preventol | -- | -- | -- | 0.00 |
| DGBE | -- | -- | -- | 26.7 |

3.2 Tissue Calibration Result

The dielectric parameters of the liquids were verified prior to the SAR evaluation using APREL Dielectric Probe Kit and Anritsu MS4623B Vector Network Analyzer.

| Body Tissue Simulate Measurement | | | | |
|---|---------------------------------|--------------------------|--------------------------|----------------------|
| Frequency [MHz] | Description | Dielectric Parameters | | Tissue Temp. [°C] |
| | | ϵ_r | σ [s/m] | |
| 2450 MHz | Reference result ± 5% window | 52.7 50.065 to 55.335 | 1.95 1.8525 to 2.0475 | N/A |
| | 23-Jan-13 | 53.41 | 1.91 | 20.4 |
| 2412 MHz | Low channel | 54.11 | 1.88 | 20.4 |
| 2437 MHz | Mid channel | 53.49 | 1.90 | 20.4 |
| 2462 MHz | High channel | 53.26 | 1.93 | 20.4 |

| Body Tissue Simulate Measurement | | | | |
|---|---------------------------------|--------------------------|--------------------------|----------------------|
| Frequency [MHz] | Description | Dielectric Parameters | | Tissue Temp. [°C] |
| | | ϵ_r | σ [s/m] | |
| 2450 MHz | Reference result ± 5% window | 52.7 50.065 to 55.335 | 1.95 1.8525 to 2.0475 | N/A |
| | 26-Feb-13 | 53.55 | 1.98 | 20.8 |
| 2412 MHz | Low channel | 54.13 | 1.94 | 20.8 |
| 2437 MHz | Mid channel | 53.86 | 1.96 | 20.8 |
| 2462 MHz | High channel | 53.37 | 1.99 | 20.8 |

3.3 Tissue Dielectric Parameters for Head and Body Phantoms

The head tissue dielectric parameters recommended by the IEEE SCC-34/SC-2 in P1528 have been incorporated in the following table. These head parameters are derived from planar layer models simulating the highest expected SAR for the dielectric properties and tissue thickness variations in a human head. Other head and body tissue parameters that have not been specified in P1528 are derived from the tissue dielectric parameters computed from the 4-Cole-Cole equations described in Reference [12] and extrapolated according to the head parameters specified in P1528.

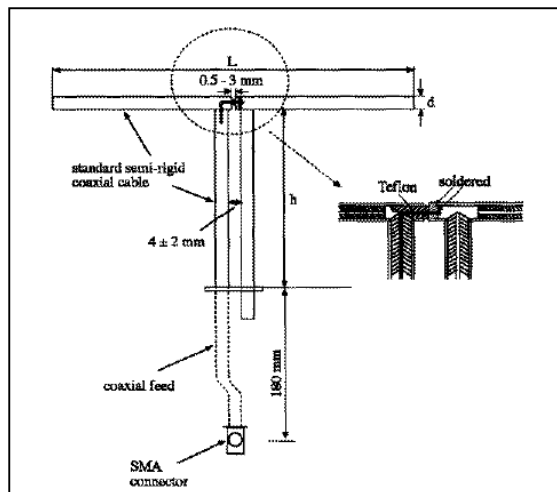
| Target Frequency (MHz) | Head | | Body | |
|---------------------------|--------------|----------------|--------------|----------------|
| | ϵ_r | σ (S/m) | ϵ_r | σ (S/m) |
| 150 | 52.3 | 0.76 | 61.9 | 0.80 |
| 300 | 45.3 | 0.87 | 58.2 | 0.92 |
| 450 | 43.5 | 0.87 | 56.7 | 0.94 |
| 835 | 41.5 | 0.90 | 55.2 | 0.97 |
| 900 | 41.5 | 0.97 | 55.0 | 1.05 |
| 915 | 41.5 | 0.98 | 55.0 | 1.06 |
| 1450 | 40.5 | 1.20 | 54.0 | 1.30 |
| 1610 | 40.3 | 1.29 | 53.8 | 1.40 |
| 1800 – 2000 | 40.0 | 1.40 | 53.3 | 1.52 |
| 2450 | 39.2 | 1.80 | 52.7 | 1.95 |
| 3000 | 38.5 | 2.40 | 52.0 | 2.73 |
| 5800 | 35.3 | 5.27 | 48.2 | 6.00 |

(ϵ_r = relative permittivity, σ = conductivity and $\rho = 1000 \text{ kg/m}^3$)

4. SAR Measurement Procedure

4.1 SAR System Check

4.1.1 Dipoles



The dipoles used is based on the IEEE-1528 standard, and is complied with mechanical and electrical specifications in line with the requirements of both IEEE and FCC Supplement C. the table below provides details for the mechanical and electrical specifications for the dipoles.

| Frequency | L (mm) | h (mm) | d (mm) |
|-----------|--------|--------|--------|
| 2450MHz | 53.5 | 30.4 | 3.6 |

4.1.2 System Check Result

| System Performance Check at 2450MHz | | | | |
|-------------------------------------|-------------------------------|--------------------|-------------------------|-------------------|
| Dipole Kit: D2450V2 | | | | |
| Frequency [MHz] | Description | SAR [w/kg] 1g | SAR [w/kg] 10g | Tissue Temp. [°C] |
| 2450 MHz | Reference result ± 10% window | 54 48.6 to 59.4 | 24.96 22.46 to 27.46 | N/A |
| | 23-Jan-13 | 50.80 | 22.60 | 20.4 |
| | 26-Feb-13 | 51.60 | 22.88 | 20.8 |

Note: (1) The power level is used 250mW
 (2) All SAR values are normalized to 1W forward power.
 (3) The reference result is from Appendix E.

4.2 SAR Measurement Procedure

The Dasy5 calculates SAR using the following equation,

$$SAR = \frac{\sigma |E|^2}{\rho}$$

σ : represents the simulated tissue conductivity

ρ : represents the tissue density

The EUT is set to transmit at the required power in line with product specification, at each frequency relating to the LOW, MID, and HIGH channel settings.

Pre-scans are made on the device to establish the location for the transmitting antenna, using a large area scan in either air or tissue simulation fluid.

The EUT is placed against the Universal Phantom where the maximum area scan dimensions are larger than the physical size of the resonating antenna. When the scan size is not large enough to cover the peak SAR distribution, it is modified by either extending the area scan size in both the X and Y directions, or the device is shifted within the predefined area.

The area scan is then run to establish the peak SAR location (interpolated resolution set at 1mm²) which is then used to orient the center of the zoom scan. The zoom scan is then executed and the 1g and 10g averages are derived from the zoom scan volume (interpolated resolution set at 1mm³).

5. SAR Exposure Limits

SAR assessments have been made in line with the requirements of IEEE-1528, FCC Supplement C, and comply with ANSI/IEEE C95.1-1992 “Uncontrolled Environments” limits. These limits apply to a location which is deemed as “Uncontrolled Environment” which can be described as a situation where the general public may be exposed to an RF source with no prior knowledge or control over their exposure.

Limits for General Population/Uncontrolled Exposure (W/kg)

| Type Exposure | Uncontrolled Environment Limit |
|--|---------------------------------------|
| Spatial Peak SAR (1g cube tissue for brain or body) | 1.60 W/kg |
| Spatial Average SAR (whole body) | 0.08 W/kg |
| Spatial Peak SAR (10g for hands, feet, ankles and wrist) | 4.00 W/kg |

6. Test Equipment List

| Instrument | Manufacturer | Model No. | Serial No. | Last Calibration | Next Calibration |
|--------------------------------------|--------------|--------------|----------------|------------------|------------------|
| Stäubli Robot TX60L | Stäubli | TX60L | F09/5BL1A1/A06 | 2009/05/18 | only once |
| Controller | Speag | CS8c | N/A | 2009/05/18 | only once |
| Reference Dipole 2450MHz | Speaq | ALS-D-2450 | QTK-319 | 2012/11/20 | 2013/11/19 |
| SAM Twin Phantom | Speag | QD000 P40 CA | Tp 1515 | N/A | N/A |
| Device Holder | Speag | N/A | N/A | N/A | N/A |
| Data Acquisition Electronic | Speag | DAE4 | 1207 | 2012/05/30 | 2013/05/29 |
| E-Field Probe | Speag | EX3DV4 | 3698 | 2012/07/27 | 2013/07/26 |
| SAR Software | Speag | DASY52 | V52.8 (3) | N/A | N/A |
| Apral Dipole Spaccer | Apral | ALS-DS-U | QTK-295 | N/A | N/A |
| Power Amplifier | Mini-Circuit | ZHL-42 | D051404-20 | N/A | N/A |
| Directional Coupler | Agilent | 778D-012 | 50550 | N/A | N/A |
| Universal Radio Communication Tester | R&S | CMU 200 | 104846 | 2012/05/14 | 2013/05/13 |
| Vector Network | Anritsu | MS4623B | 992801 | 2012/07/30 | 2013/07/29 |
| Signal Generator | Anritsu | MG3694A | 041902 | 2012/08/03 | 2013/08/02 |
| Power Meter | Anritsu | ML2487A | 6K00003357 | 2012/05/30 | 2013/05/29 |
| Wide Bandwidth Sensor | Anritsu | MA2411B | 0846193 | 2012/05/30 | 2013/05/29 |

7. Measurement Uncertainty

| DASY5 Uncertainty | | | | | | | | |
|--|---------------|-------------|------------|---------|----------|----------------|-----------------|-----------------------|
| Measurement uncertainty for 300 MHz to 3 GHz averaged over 1 gram / 10 gram. | | | | | | | | |
| Error Description | Uncert. value | Prob. Dist. | Div. | (ci) 1g | (ci) 10g | Std. Unc. (1g) | Std. Unc. (10g) | (vi) V _{eff} |
| Measurement System | | | | | | | | |
| Probe Calibration | ±6.0% | N | 1 | 1 | 1 | ±6.0% | ±6.0% | ∞ |
| Axial Isotropy | ±4.7% | R | $\sqrt{3}$ | 0.7 | 0.7 | ±1.9% | ±1.9% | ∞ |
| Hemispherical Isotropy | ±9.6% | R | $\sqrt{3}$ | 0.7 | 0.7 | ±3.9% | ±3.9% | ∞ |
| Boundary Effects | ±1.0% | R | $\sqrt{3}$ | 1 | 1 | ±0.6% | ±0.6% | ∞ |
| Linearity | ±4.7% | R | $\sqrt{3}$ | 1 | 1 | ±2.7% | ±2.7% | ∞ |
| System Detection Limits | ±1.0% | R | $\sqrt{3}$ | 1 | 1 | ±0.6% | ±0.6% | ∞ |
| Readout Electronics | ±0.3% | N | 1 | 1 | 1 | ±0.3% | ±0.3% | ∞ |
| Response Time | ±0.8% | R | $\sqrt{3}$ | 1 | 1 | ±0.5% | ±0.5% | ∞ |
| Integration Time | ±2.6% | R | $\sqrt{3}$ | 1 | 1 | ±1.5% | ±1.5% | ∞ |
| RF Ambient Noise | ±3.0% | R | $\sqrt{3}$ | 1 | 1 | ±1.7% | ±1.7% | ∞ |
| RF Ambient Reflections | ±3.0% | R | $\sqrt{3}$ | 1 | 1 | ±1.7% | ±1.7% | ∞ |
| Probe Positioner | ±0.4% | R | $\sqrt{3}$ | 1 | 1 | ±0.2% | ±0.2% | ∞ |
| Probe Positioning | ±2.9% | R | $\sqrt{3}$ | 1 | 1 | ±1.7% | ±1.7% | ∞ |
| Max. SAR Eval. | ±1.0% | R | $\sqrt{3}$ | 1 | 1 | ±0.6% | ±0.6% | ∞ |
| Test Sample Related | | | | | | | | |
| Device Positioning | ±2.9% | N | 1 | 1 | 1 | ±2.9% | ±2.9% | 145 |
| Device Holder | ±3.6% | N | 1 | 1 | 1 | ±3.6% | ±3.6% | 5 |
| Power Drift | ±5.0% | R | $\sqrt{3}$ | 1 | 1 | ±2.9% | ±2.9% | ∞ |
| Phantom and Setup | | | | | | | | |
| Phantom Uncertainty | ±4.0% | R | $\sqrt{3}$ | 1 | 1 | ±2.3% | ±2.3% | ∞ |
| Liquid Conductivity (target) | ±5.0% | R | $\sqrt{3}$ | 0.64 | 0.43 | ±1.8% | ±1.2% | ∞ |
| Liquid Conductivity (meas.) | ±2.5% | N | 1 | 0.64 | 0.43 | ±1.6% | ±1.1% | ∞ |
| Liquid Permittivity (target) | ±5.0% | R | $\sqrt{3}$ | 0.6 | 0.49 | ±1.7% | ±1.4% | ∞ |
| Liquid Permittivity (meas.) | ±2.5% | N | 1 | 0.6 | 0.49 | ±1.5% | ±1.2% | ∞ |
| Combined Std. Uncertainty | | | | | | ±11% | ±10.8% | 387 |
| Expanded STD Uncertainty | | | | | | ±22% | ±21.5% | |

8. Conducted Power Measurement

| Test Mode | Channel No. | Frequency (MHz) | Average Power (dBm) | Peak Power (dBm) |
|---------------------------------|-------------|-----------------|---------------------|------------------|
| PA-6030 | | | | |
| 802.11b | 01 | 2412 | 15.31 | 17.94 |
| | 06 | 2437 | 14.28 | 17.03 |
| | 11 | 2462 | 16.74 | 19.53 |
| 802.11g | 01 | 2412 | 14.49 | 22.45 |
| | 06 | 2437 | 15.68 | 23.37 |
| | 11 | 2462 | 14.34 | 22.79 |
| 802.11n(20M) | 01 | 2412 | 14.47 | 22.53 |
| | 06 | 2437 | 15.41 | 23.20 |
| | 11 | 2462 | 14.33 | 22.81 |
| PT-9130-1-1, PT-9230-1-1 | | | | |
| 802.11b | 01 | 2412 | 15.45 | 18.05 |
| | 06 | 2437 | 14.12 | 16.94 |
| | 11 | 2462 | 16.82 | 19.43 |
| 802.11g | 01 | 2412 | 14.35 | 22.31 |
| | 06 | 2437 | 15.84 | 23.48 |
| | 11 | 2462 | 14.39 | 22.84 |
| 802.11n(20M) | 01 | 2412 | 14.43 | 22.48 |
| | 06 | 2437 | 15.38 | 23.03 |
| | 11 | 2462 | 14.21 | 22.69 |
| PT-9132-0-0, PT-9232-0-0 | | | | |
| 802.11b | 01 | 2412 | 15.47 | 18.04 |
| | 06 | 2437 | 14.21 | 17.14 |
| | 11 | 2462 | 16.69 | 19.40 |
| 802.11g | 01 | 2412 | 14.38 | 22.28 |
| | 06 | 2437 | 15.75 | 23.45 |
| | 11 | 2462 | 14.42 | 22.86 |
| 802.11n(20M) | 01 | 2412 | 14.32 | 22.41 |
| | 06 | 2437 | 15.32 | 23.39 |
| | 11 | 2462 | 14.29 | 22.74 |

9. Test Results

9.1 SAR Test Results Summary

| SAR MEASUREMENT | | | | | | | | |
|---|---------------------|-----------|------|----------------------------|------------------|---------------|-------------------|-----------------|
| Ambient Temperature (°C) : 21.9 ±2 | | | | Relative Humidity (%) : 52 | | | | |
| Liquid Temperature (°C) : 20.4 ±2 | | | | Depth of Liquid (cm):>15 | | | | |
| Product: Mobile Computer ; Model No: PA-6030 | | | | | | | | |
| Test Mode: 802.11b - 2450 MHz- Wgt Antenna, P/N: AQ060WIPI01+A | | | | | | | | |
| Test Position Body | Antenna Position | Frequency | | Conducted Power (dBm) | | SAR 1g (W/kg) | | Limit (W/kg) |
| | | Channel | MHz | Measurement | Tune-up Limit | Measurement | Tune-up Scaled | |
| Top | Fixed | 1 | 2412 | 15.31 | 15.5 | 0.628 | 0.656 | 1.6 |
| Top | Fixed | 6 | 2437 | 14.28 | 14.5 | 0.677 | 0.712 | 1.6 |
| Top | Fixed | 11 | 2462 | 16.74 | 17 | 0.751 | 0.797 | 1.6 |
| Front | Fixed | 11 | 2462 | 16.74 | 17 | 0.138 | 0.147 | 1.6 |
| Back | Fixed | 11 | 2462 | 16.74 | 17 | 0.210 | 0.223 | 1.6 |
| L-Side | Fixed | 11 | 2462 | 16.74 | 17 | 0.094 | 0.100 | 1.6 |
| R-Side | Fixed | 11 | 2462 | 16.74 | 17 | 0.061 | 0.065 | 1.6 |
| Test Mode: 802.11g - 2450 MHz- Wgt Antenna, P/N: AQ060WIPI01+A | | | | | | | | |
| Top | Fixed | 6 | 2437 | 15.68 | 16 | 0.612 | 0.659 | 1.6 |
| Test Mode: 802.11n (20M)- 2450 MHz- Wgt Antenna, P/N: AQ060WIPI01+A | | | | | | | | |
| Top | Fixed | 6 | 2437 | 15.41 | 15.5 | 0.745 | 0.761 | 1.6 |
| Note : (1) According KDB 447498 D01, for antenna(s) located ≥ 5 cm from other side , the SAR is not required (2) According 178919 D01 5) b) iii), When highest SAR is less than 0.8 W/kg, SAR evaluation is not required to add an equivalent antenna. | | | | | | | | |

| SAR MEASUREMENT | | | | | | | | |
|---|---------------------|-----------|------|-----------------------|---------------------------|---------------|-------------------|-----------------|
| Ambient Temperature (°C) : 21.9 ±2 | | | | | Relative Humidity (%): 51 | | | |
| Liquid Temperature (°C) : 20.8 ±2 | | | | | Depth of Liquid (cm):>15 | | | |
| Product: Mobile Computer ; Model No: PT-9130-1-1, PT-9230-1-1 | | | | | | | | |
| Test Mode: 802.11b - 2450 MHz- Aristotle Enterprises Antenna, P/N: 69-70003-006 | | | | | | | | |
| Test Position Body | Antenna Position | Frequency | | Conducted Power (dBm) | | SAR 1g (W/kg) | | Limit (W/kg) |
| | | Channel | MHz | Measurement | Tune-up Limit | Measurement | Tune-up Scaled | |
| R-Side | Fixed | 1 | 2412 | 15.45 | 15.5 | 0.146 | 0.148 | 1.6 |
| R-Side | Fixed | 6 | 2437 | 14.12 | 14.5 | 0.322 | 0.351 | 1.6 |
| R-Side | Fixed | 11 | 2462 | 16.82 | 17 | 0.548 | 0.571 | 1.6 |
| Front | Fixed | 11 | 2462 | 16.82 | 17 | 0.044 | 0.046 | 1.6 |
| Back | Fixed | 11 | 2462 | 16.82 | 17 | 0.514 | 0.536 | 1.6 |
| Bottom | Fixed | 11 | 2462 | 16.82 | 17 | 0.159 | 0.166 | 1.6 |
| Test Mode: 802.11g - 2450 MHz- Aristotle Enterprises Antenna, P/N: 69-70003-006 | | | | | | | | |
| R-Side | Fixed | 6 | 2437 | 15.84 | 16 | 0.277 | 0.287 | 1.6 |
| Test Mode: 802.11n (20M)- 2450 MHz- Aristotle Enterprises Antenna, P/N: 69-70003-006 | | | | | | | | |
| R-Side | Fixed | 6 | 2437 | 15.38 | 15.5 | 0.217 | 0.223 | 1.6 |
| Note : (1) According KDB 447498 D01, for antenna(s) located ≥ 5 cm from other side , the SAR is not required (2) According 178919 D01 5) b) iii), When highest SAR is less than 0.8 W/kg, SAR evaluation is not required to add an equivalent antenna. | | | | | | | | |

| SAR MEASUREMENT | | | | | | | | |
|--|------------------|-----------|------|-----------------------|----------------------------|---------------|----------------|--------------|
| Ambient Temperature (°C) : 21.9 ±2 | | | | | Relative Humidity (%) : 51 | | | |
| Liquid Temperature (°C) : 20.8 ±2 | | | | | Depth of Liquid (cm):>15 | | | |
| Product: Mobile Computer ; Model No: PT-9132-0-0, PT-9232-0-0 | | | | | | | | |
| Test Mode: 802.11b - 2450 MHz- LYNwave Antenna, P/N: ALB120-052020-150052 | | | | | | | | |
| Test Position Body | Antenna Position | Frequency | | Conducted Power (dBm) | | SAR 1g (W/kg) | | Limit (W/kg) |
| | | Channel | MHz | Measurement | Tune-up Limit | Measurement | Tune-up Scaled | |
| Top | Fixed | 1 | 2412 | 15.47 | 15.5 | 0.247 | 0.249 | 1.6 |
| Top | Fixed | 6 | 2437 | 14.21 | 14.5 | 0.421 | 0.450 | 1.6 |
| Top | Fixed | 11 | 2462 | 16.69 | 17 | 0.522 | 0.561 | 1.6 |
| Front | Fixed | 11 | 2462 | 16.69 | 17 | 0.397 | 0.426 | 1.6 |
| R-Side | Fixed | 11 | 2462 | 16.69 | 17 | 0.118 | 0.127 | 1.6 |
| L-Side | Fixed | 11 | 2462 | 16.69 | 17 | 0.071 | 0.076 | 1.6 |
| Test Mode: 802.11g - 2450 MHz- LYNwave Antenna, P/N: ALB120-052020-150052 | | | | | | | | |
| Top | Fixed | 6 | 2437 | 15.75 | 16 | 0.267 | 0.283 | 1.6 |
| Test Mode: 802.11n (20M)- 2450 MHz- LYNwave Antenna, P/N: ALB120-052020-150052 | | | | | | | | |
| Top | Fixed | 6 | 2437 | 15.32 | 15.5 | 0.260 | 0.271 | 1.6 |
| Note : According KDB 447498 D01, for antenna(s) located ≥ 5 cm from other side , the SAR is not required | | | | | | | | |

10. SAR measurement variability

- 1) Repeated measurement is not required when the original highest measured SAR is < 0.80 W/kg; steps 2) through 4) do not apply.
- 2) When the original highest measured SAR is ≥ 0.80 W/kg, repeat that measurement once.
- 3) Perform a second repeated measurement only if the ratio of largest to smallest SAR for the original and first repeated measurements is > 1.20 or when the original or repeated measurement is ≥ 1.45 W/kg (~ 10% from the 1-g SAR limit).
- 4) Perform a third repeated measurement only if the original, first or second repeated measurement is ≥ 1.5 W/kg and the ratio of largest to smallest SAR for the original, first and second repeated measurements is > 1.20.

| Frequency | | SAR 1g (W/kg) | | | | | | |
|-----------|-----|---------------|----------------|-------|-----------------|-------|----------------|-------|
| Channel | MHz | Original | First Repeated | | Second Repeated | | Third Repeated | |
| | | | Value | Ratio | Value | Ratio | Value | Ratio |
| N/A | N/A | N/A | N/A | N/A | N/A | N/A | N/A | N/A |

Appendix**Appendix A. SAR System Check Data****Appendix B. SAR measurement Data****Appendix C. Test Setup Photographs & EUT Photographs****Appendix D. Probe Calibration Data****Appendix E. Dipole Calibration Data**

Appendix A. SAR System Check Data

Test Laboratory: QuieTek

Date/Time: 1/23/2013

System Performance Check_2450MHz-Body

DUT: Dipole 2450 MHz; Type: ALS-D-2450-S-2

Communication System: CW; Frequency: 2450 MHz; Communication System PAR: 0 dB

Medium parameters used: $f = 2450$ MHz; $\sigma = 1.91$ mho/m; $\epsilon_r = 53.41$; $\rho = 1000$ kg/m³

Phantom section: Flat Section

Ambient Temperature (°C) : 21.9, Liquid Temperature (°C) : 20.4

Measurement Standard: DASYS (IEEE/IEC/ANSI C63.19-2007)

DASY5 Configuration:

- Probe: EX3DV4 - SN3698; ConvF(6.68, 6.68, 6.68); Calibrated: 7/27/2012;
- Sensor-Surface: 3mm (Mechanical Surface Detection)
- Electronics: DAE4 Sn1207; Calibrated: 5/30/2012
- Phantom: SAM with right table; Type: SAM;
- Measurement SW: DASYS2, Version 52.8 (3); SEMCAD X Version 14.6.7 (6848)

Configuration/2450MHz_Body/Area Scan (8x9x1): Measurement grid: dx=12mm, dy=12mm

Maximum value of SAR (measured) = 12.6 W/kg

Configuration/2450MHz_Body/Zoom Scan (7x7x7) (7x7x7)/Cube 0:

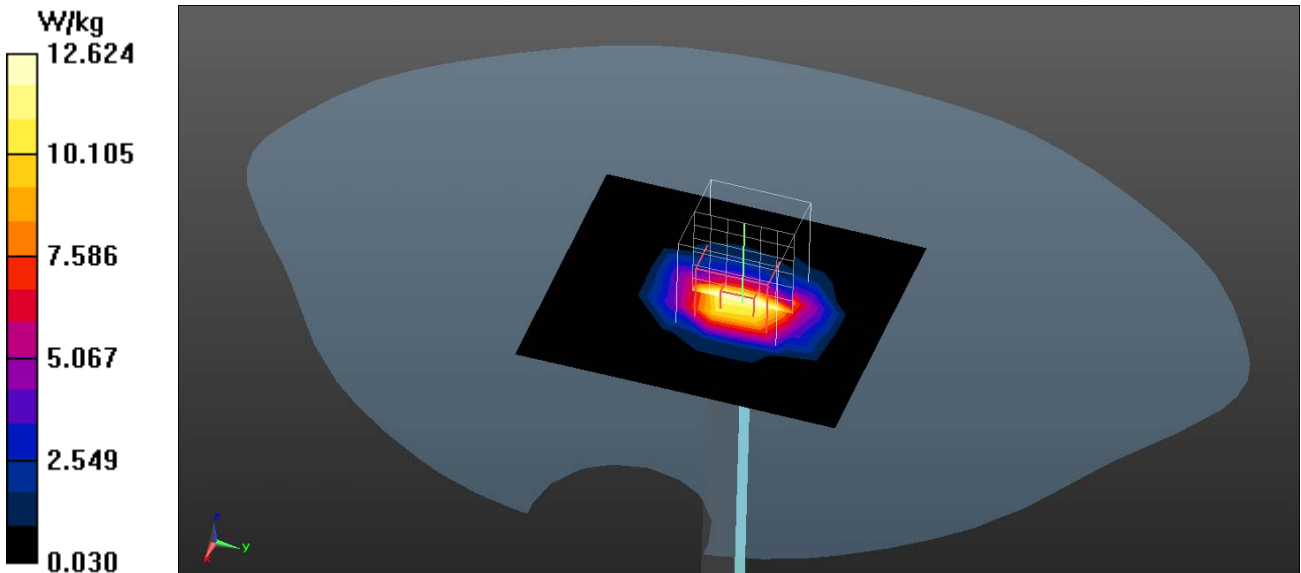
Measurement grid: dx=5mm, dy=5mm, dz=5mm

Reference Value = 92.142 V/m; Power Drift = -0.18 dB

Peak SAR (extrapolated) = 28.1 W/kg

SAR(1 g) = 12.7 W/kg; SAR(10 g) = 5.65 W/kg

Maximum value of SAR (measured) = 17.2 W/kg



Test Laboratory: QuieTek

Date/Time: 2/26/2013

System Performance Check_2450MHz-Body

DUT: Dipole 2450 MHz; Type: ALS-D-2450-S-2

Communication System: CW; Frequency: 2450 MHz; Communication System PAR: 0 dB

Medium parameters used: $f = 2450$ MHz; $\sigma = 1.98$ mho/m; $\epsilon_r = 53.55$; $\rho = 1000$ kg/m³

Phantom section: Flat Section

Ambient Temperature (°C) : 21.9, Liquid Temperature (°C) : 20.8

Measurement Standard: DASY5 (IEEE/IEC/ANSI C63.19-2007)

DASY5 Configuration:

- Probe: EX3DV4 - SN3698; ConvF(6.68, 6.68, 6.68); Calibrated: 7/27/2012;
- Sensor-Surface: 3mm (Mechanical Surface Detection)
- Electronics: DAE4 Sn1207; Calibrated: 5/30/2012
- Phantom: SAM with right table; Type: SAM;
- Measurement SW: DASY52, Version 52.8 (3); SEMCAD X Version 14.6.7 (6848)

Configuration/2450MHz_Body/Area Scan (8x9x1): Measurement grid: dx=12mm, dy=12mm

Maximum value of SAR (measured) = 12.8 W/kg

Configuration/2450MHz_Body/Zoom Scan (7x7x7) (7x7x7)/Cube 0:

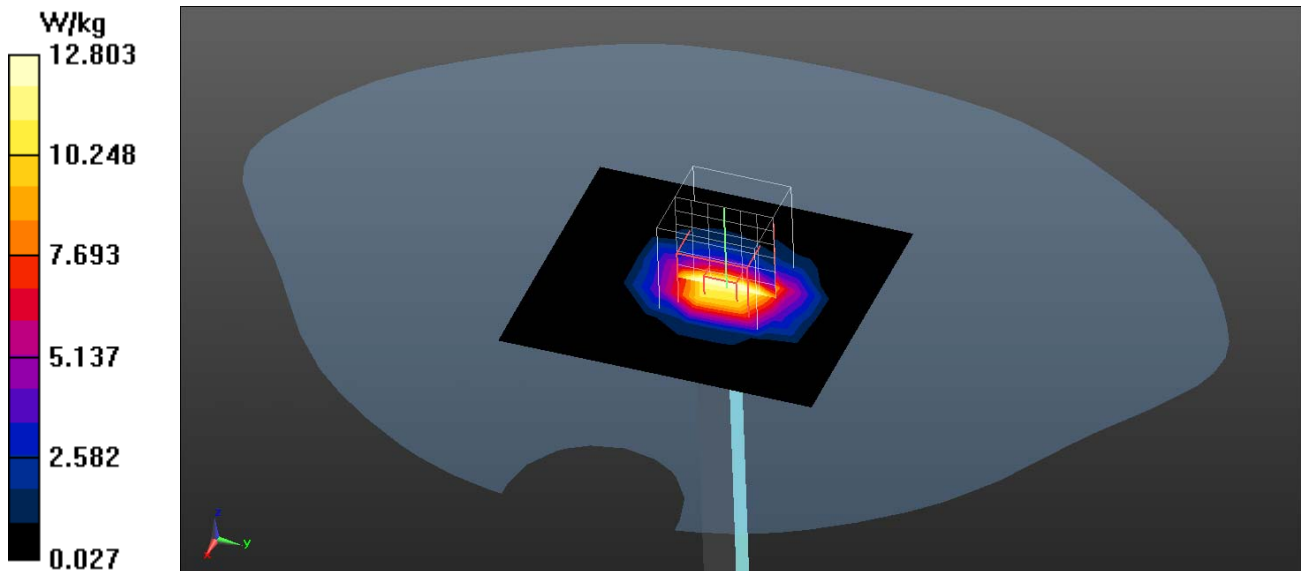
Measurement grid: dx=5mm, dy=5mm, dz=5mm

Reference Value = 92.952 V/m; Power Drift = -0.16 dB

Peak SAR (extrapolated) = 28.4 W/kg

SAR(1 g) = 12.9 W/kg; SAR(10 g) = 5.72 W/kg

Maximum value of SAR (measured) = 17.3 W/kg



Appendix B. SAR measurement Data

Antenna Kit #4 : Wgt Antenna, P/N: AQ060WIP101+A

Test Laboratory: QuieTek

Date/Time: 1/23/2013

802.11b_1-Top

DUT: Mobile Computer; Type: PA-6030

Communication System: WLAN 2.4G; Frequency: 2412 MHz; Communication System PAR: 0 dB

Medium parameters used: $f = 2412$ MHz; $\sigma = 1.88$ mho/m; $\epsilon_r = 54.11$; $\rho = 1000$ kg/m³

Phantom section: Flat Section

Ambient Temperature (°C) : 21.9, Liquid Temperature (°C) : 20.4

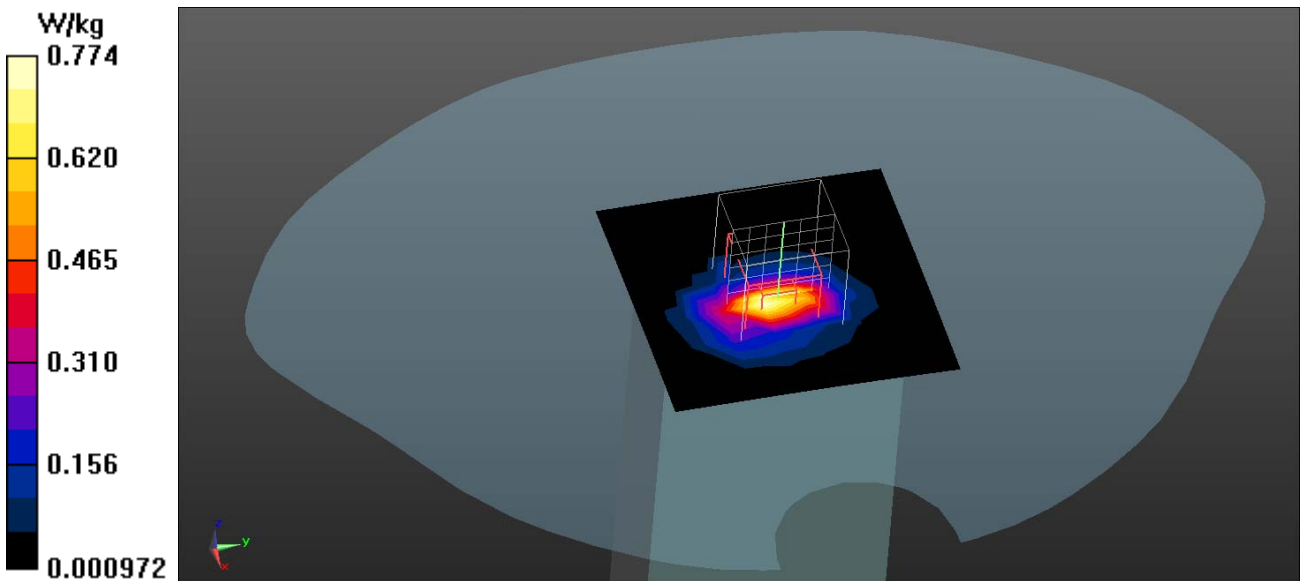
Measurement Standard: DASYS (IEEE/IEC/ANSI C63.19-2007)

DASY5 Configuration:

- Probe: EX3DV4 - SN3698; ConvF(6.68, 6.68, 6.68); Calibrated: 7/27/2012;
- Sensor-Surface: 4mm (Mechanical Surface Detection)
- Electronics: DAE4 Sn1207; Calibrated: 5/30/2012
- Phantom: SAM with right table; Type: SAM;
- Measurement SW: DASYS2, Version 52.8 (3); SEMCAD X Version 14.6.7 (6848)

Configuration/Body/Area Scan (8x8x1): Measurement grid: dx=12mm, dy=12mm
 Maximum value of SAR (measured) = 0.774 W/kg

Configuration/Body/Zoom Scan (7x7x7) (7x7x7)/Cube 0: Measurement grid:
 dx=5mm, dy=5mm, dz=5mm
 Reference Value = 20.493 V/m; Power Drift = -0.03 dB
 Peak SAR (extrapolated) = 1.72 W/kg
SAR(1 g) = 0.628 W/kg; SAR(10 g) = 0.290 W/kg
 Maximum value of SAR (measured) = 0.872 W/kg



Test Laboratory: QuieTek

Date/Time: 1/23/2013

802.11b_6-Top

DUT: Mobile Computer; Type: PA-6030

Communication System: WLAN 2.4G; Frequency: 2437 MHz; Communication System PAR: 0 dB

Medium parameters used: $f = 2437 \text{ MHz}$; $\sigma = 1.9 \text{ mho/m}$; $\epsilon_r = 53.49$; $\rho = 1000 \text{ kg/m}^3$

Phantom section: Flat Section

Ambient Temperature ($^{\circ}\text{C}$) : 21.9, Liquid Temperature ($^{\circ}\text{C}$) : 20.4

Measurement Standard: DASYS (IEEE/IEC/ANSI C63.19-2007)

DASY5 Configuration:

- Probe: EX3DV4 - SN3698; ConvF(6.68, 6.68, 6.68); Calibrated: 7/27/2012;
- Sensor-Surface: 4mm (Mechanical Surface Detection)
- Electronics: DAE4 Sn1207; Calibrated: 5/30/2012
- Phantom: SAM with right table; Type: SAM;
- Measurement SW: DASYS2, Version 52.8 (3); SEMCAD X Version 14.6.7 (6848)

Configuration/Body/Area Scan (8x8x1): Measurement grid: $dx=12\text{mm}$, $dy=12\text{mm}$
 Maximum value of SAR (measured) = 0.804 W/kg

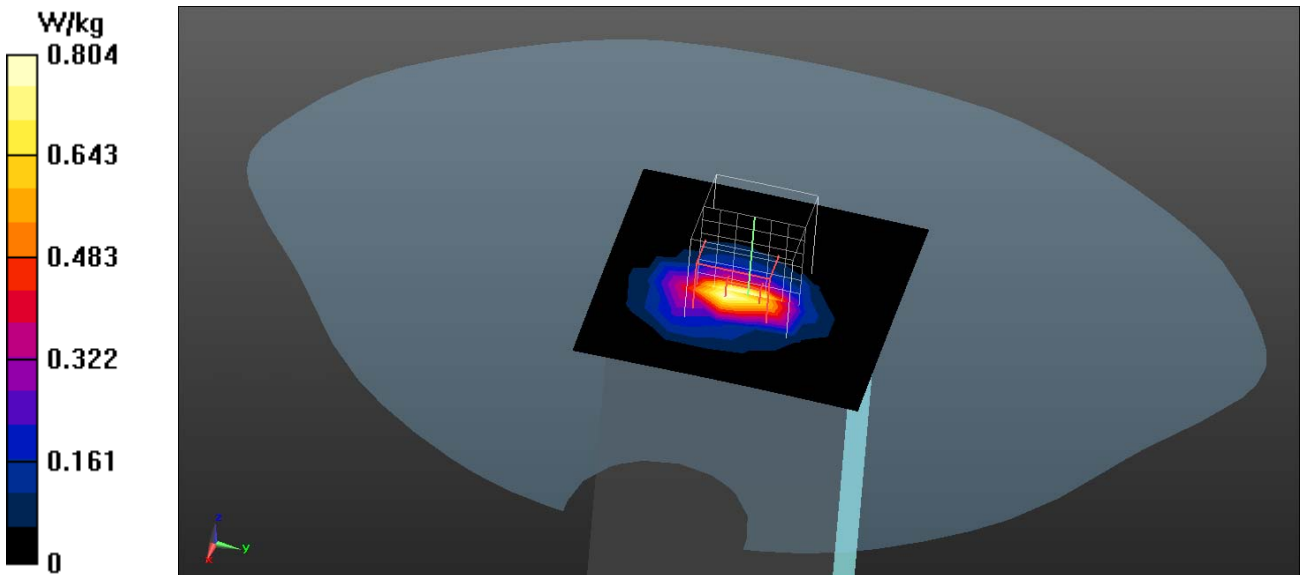
Configuration/Body/Zoom Scan (7x7x7) (7x7x7)/Cube 0: Measurement grid:
 $dx=5\text{mm}$, $dy=5\text{mm}$, $dz=5\text{mm}$

Reference Value = 21.487 V/m; Power Drift = -0.19 dB

Peak SAR (extrapolated) = 1.57 W/kg

SAR(1 g) = 0.677 W/kg; SAR(10 g) = 0.300 W/kg

Maximum value of SAR (measured) = 0.913 W/kg



Test Laboratory: QuieTek

Date/Time: 1/23/2013

802.11b_11-Top

DUT: Mobile Computer; Type: PA-6030

Communication System: WLAN 2.4G; Frequency: 2462 MHz; Communication System PAR: 0 dB

Medium parameters used: $f = 2462 \text{ MHz}$; $\sigma = 1.93 \text{ mho/m}$; $\epsilon_r = 53.26$; $\rho = 1000 \text{ kg/m}^3$

Phantom section: Flat Section

Ambient Temperature ($^{\circ}\text{C}$) : 21.9, Liquid Temperature ($^{\circ}\text{C}$) : 20.4

Measurement Standard: DASY5 (IEEE/IEC/ANSI C63.19-2007)

DASY5 Configuration:

- Probe: EX3DV4 - SN3698; ConvF(6.68, 6.68, 6.68); Calibrated: 7/27/2012;
- Sensor-Surface: 4mm (Mechanical Surface Detection)
- Electronics: DAE4 Sn1207; Calibrated: 5/30/2012
- Phantom: SAM with right table; Type: SAM;
- Measurement SW: DASY52, Version 52.8 (3); SEMCAD X Version 14.6.7 (6848)

Configuration/Body/Area Scan (8x8x1): Measurement grid: $dx=12\text{mm}$, $dy=12\text{mm}$
 Maximum value of SAR (measured) = 0.972 W/kg

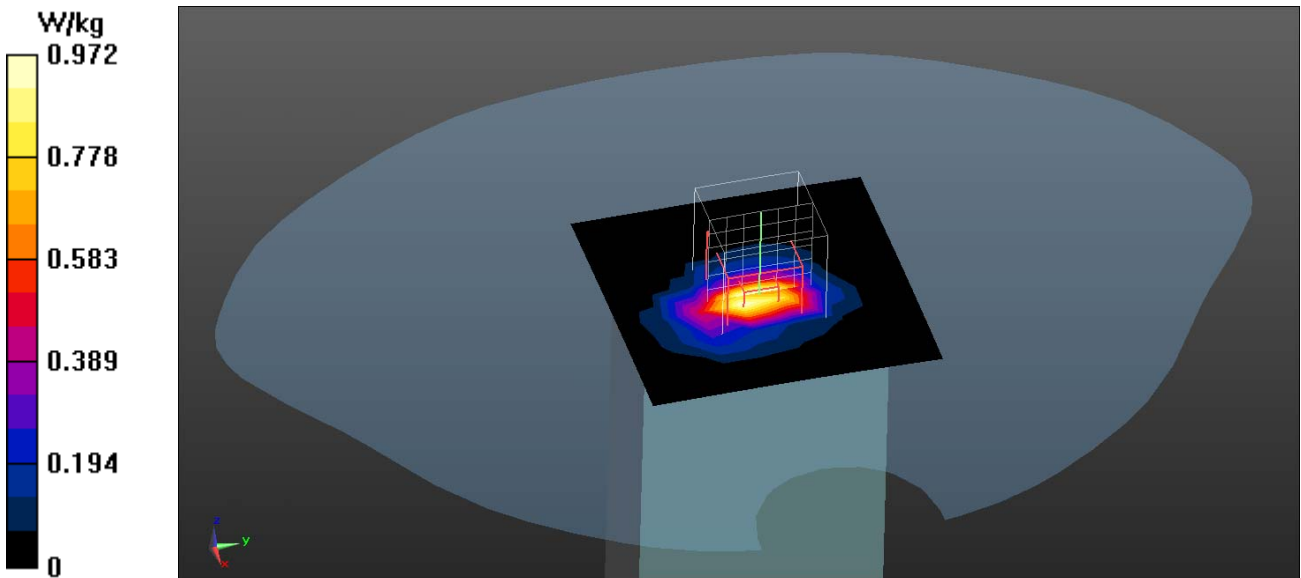
Configuration/Body/Zoom Scan (7x7x7) (7x7x7)/Cube 0: Measurement grid:
 $dx=5\text{mm}$, $dy=5\text{mm}$, $dz=5\text{mm}$

Reference Value = 23.644 V/m; Power Drift = -0.10 dB

Peak SAR (extrapolated) = 2.03 W/kg

SAR(1 g) = 0.751 W/kg; SAR(10 g) = 0.367 W/kg

Maximum value of SAR (measured) = 1.19 W/kg



Test Laboratory: QuieTek

Date/Time: 1/23/2013

802.11b_11-Front

DUT: Mobile Computer; Type: PA-6030

Communication System: WLAN 2.4G; Frequency: 2462 MHz; Communication System PAR: 0 dB

Medium parameters used: $f = 2462 \text{ MHz}$; $\sigma = 1.93 \text{ mho/m}$; $\epsilon_r = 53.26$; $\rho = 1000 \text{ kg/m}^3$

Phantom section: Flat Section

Ambient Temperature ($^{\circ}\text{C}$) : 21.9, Liquid Temperature ($^{\circ}\text{C}$) : 20.4

Measurement Standard: DASYS5 (IEEE/IEC/ANSI C63.19-2007)

DASY5 Configuration:

- Probe: EX3DV4 - SN3698; ConvF(6.68, 6.68, 6.68); Calibrated: 7/27/2012;
- Sensor-Surface: 4mm (Mechanical Surface Detection)
- Electronics: DAE4 Sn1207; Calibrated: 5/30/2012
- Phantom: SAM with right table; Type: SAM;
- Measurement SW: DASYS52, Version 52.8 (3); SEMCAD X Version 14.6.7 (6848)

Configuration/Body/Area Scan (8x12x1): Measurement grid: $dx=12\text{mm}$, $dy=12\text{mm}$
 Maximum value of SAR (measured) = 0.148 W/kg

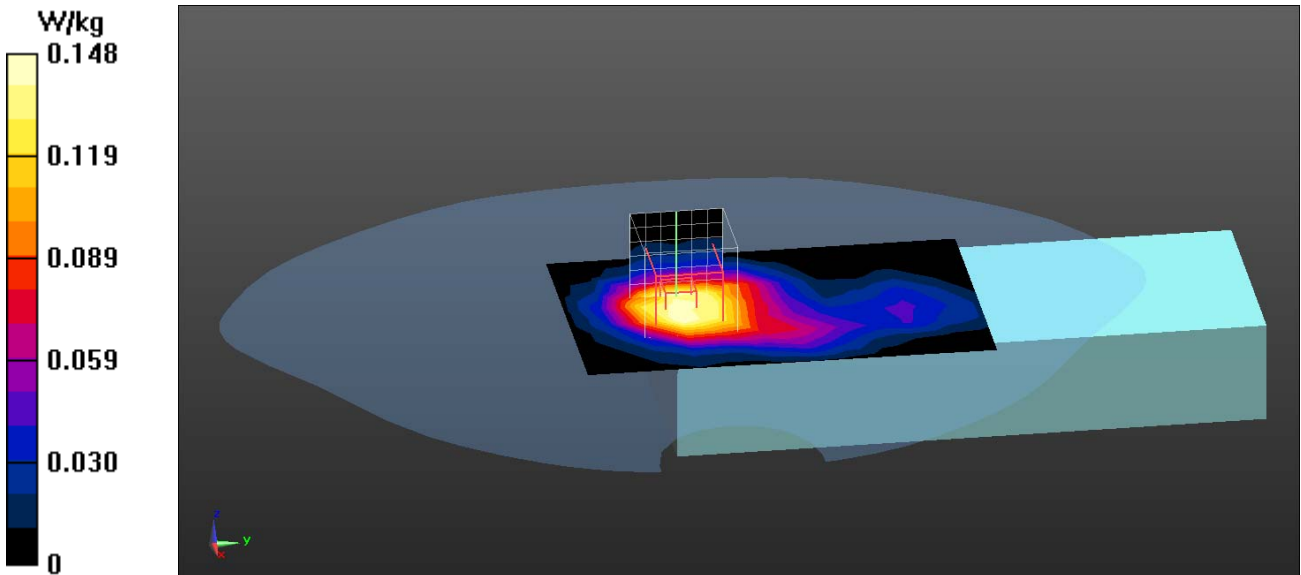
Configuration/Body/Zoom Scan (7x7x7) (7x7x7)/Cube 0: Measurement grid:
 $dx=5\text{mm}$, $dy=5\text{mm}$, $dz=5\text{mm}$

Reference Value = 8.595 V/m; Power Drift = -0.11 dB

Peak SAR (extrapolated) = 0.285 W/kg

SAR(1 g) = 0.138 W/kg; SAR(10 g) = 0.079 W/kg

Maximum value of SAR (measured) = 0.153 W/kg



Test Laboratory: QuieTek

Date/Time: 1/23/2013

802.11b_11-Back

DUT: Mobile Computer; Type: PA-6030

Communication System: WLAN 2.4G; Frequency: 2462 MHz; Communication System PAR: 0 dB

Medium parameters used: $f = 2462$ MHz; $\sigma = 1.93$ mho/m; $\epsilon_r = 53.26$; $\rho = 1000$ kg/m³

Phantom section: Flat Section

Ambient Temperature (°C) : 21.9, Liquid Temperature (°C) : 20.4

Measurement Standard: DASYS5 (IEEE/IEC/ANSI C63.19-2007)

DASY5 Configuration:

- Probe: EX3DV4 - SN3698; ConvF(6.68, 6.68, 6.68); Calibrated: 7/27/2012;
- Sensor-Surface: 4mm (Mechanical Surface Detection)
- Electronics: DAE4 Sn1207; Calibrated: 5/30/2012
- Phantom: SAM with right table; Type: SAM;
- Measurement SW: DASYS52, Version 52.8 (3); SEMCAD X Version 14.6.7 (6848)

Configuration/Body/Area Scan (8x11x1): Measurement grid: dx=12mm, dy=12mm
Maximum value of SAR (measured) = 0.229 W/kg

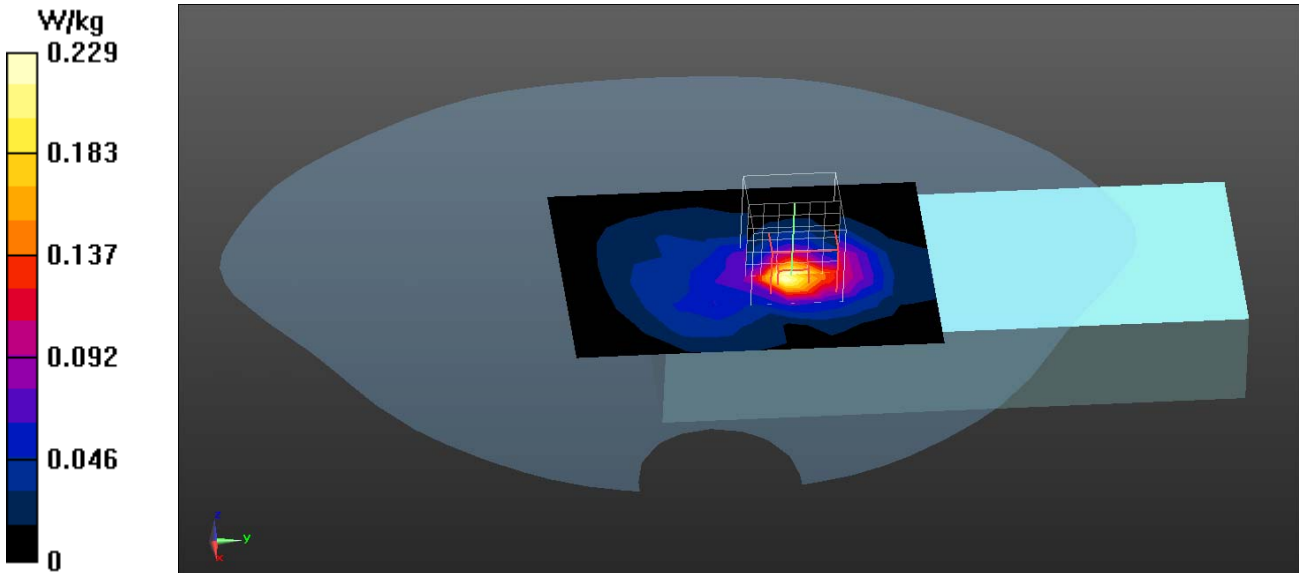
Configuration/Body/Zoom Scan (7x7x7) (7x7x7)/Cube 0: Measurement grid:
dx=5mm, dy=5mm, dz=5mm

Reference Value = 3.841 V/m; Power Drift = 0.16 dB

Peak SAR (extrapolated) = 0.358 W/kg

SAR(1 g) = 0.210 W/kg; SAR(10 g) = 0.101 W/kg

Maximum value of SAR (measured) = 0.248 W/kg



Test Laboratory: QuieTek

Date/Time: 1/23/2013

802.11b_11-L-Side

DUT: Mobile Computer; Type: PA-6030

Communication System: WLAN 2.4G; Frequency: 2462 MHz; Communication System PAR: 0 dB

Medium parameters used: $f = 2462 \text{ MHz}$; $\sigma = 1.93 \text{ mho/m}$; $\epsilon_r = 53.26$; $\rho = 1000 \text{ kg/m}^3$

Phantom section: Flat Section

Ambient Temperature ($^{\circ}\text{C}$) : 21.9, Liquid Temperature ($^{\circ}\text{C}$) : 20.4

Measurement Standard: DASYS (IEEE/IEC/ANSI C63.19-2007)

DASY5 Configuration:

- Probe: EX3DV4 - SN3698; ConvF(6.68, 6.68, 6.68); Calibrated: 7/27/2012;
- Sensor-Surface: 4mm (Mechanical Surface Detection)
- Electronics: DAE4 Sn1207; Calibrated: 5/30/2012
- Phantom: SAM with right table; Type: SAM;
- Measurement SW: DASYS2, Version 52.8 (3); SEMCAD X Version 14.6.7 (6848)

Configuration/Body/Area Scan (8x11x1): Measurement grid: $dx=12\text{mm}$, $dy=12\text{mm}$
 Maximum value of SAR (measured) = 0.0887 W/kg

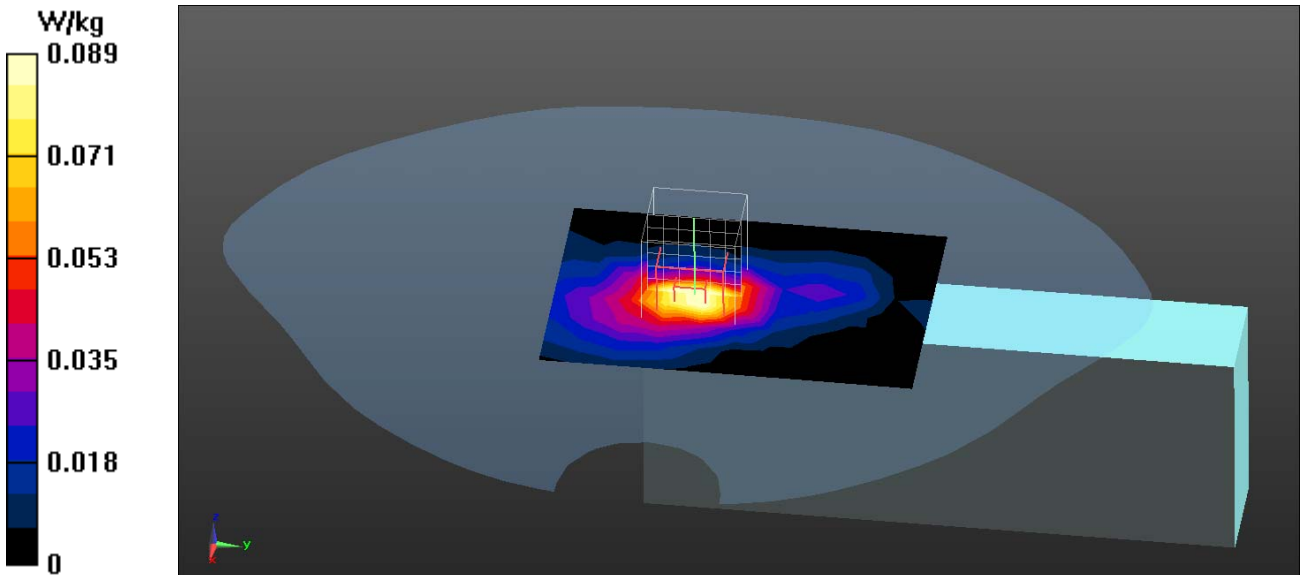
Configuration/Body/Zoom Scan (7x7x7) (7x7x7)/Cube 0: Measurement grid:
 $dx=5\text{mm}$, $dy=5\text{mm}$, $dz=5\text{mm}$

Reference Value = 7.455 V/m; Power Drift = -0.02 dB

Peak SAR (extrapolated) = 0.191 W/kg

SAR(1 g) = 0.094 W/kg; SAR(10 g) = 0.046 W/kg

Maximum value of SAR (measured) = 0.108 W/kg



Test Laboratory: QuieTek

Date/Time: 1/23/2013

802.11b_11-R-Side

DUT: Mobile Computer; Type: PA-6030

Communication System: WLAN 2.4G; Frequency: 2462 MHz; Communication System PAR: 0 dB

Medium parameters used: $f = 2462 \text{ MHz}$; $\sigma = 1.93 \text{ mho/m}$; $\epsilon_r = 53.26$; $\rho = 1000 \text{ kg/m}^3$

Phantom section: Flat Section

Ambient Temperature ($^{\circ}\text{C}$) : 21.9, Liquid Temperature ($^{\circ}\text{C}$) : 20.4

Measurement Standard: DASYS (IEEE/IEC/ANSI C63.19-2007)

DASY5 Configuration:

- Probe: EX3DV4 - SN3698; ConvF(6.68, 6.68, 6.68); Calibrated: 7/27/2012;
- Sensor-Surface: 4mm (Mechanical Surface Detection)
- Electronics: DAE4 Sn1207; Calibrated: 5/30/2012
- Phantom: SAM with right table; Type: SAM;
- Measurement SW: DASYS2, Version 52.8 (3); SEMCAD X Version 14.6.7 (6848)

Configuration/Body/Area Scan (8x11x1): Measurement grid: $dx=12\text{mm}$, $dy=12\text{mm}$
 Maximum value of SAR (measured) = 0.0658 W/kg

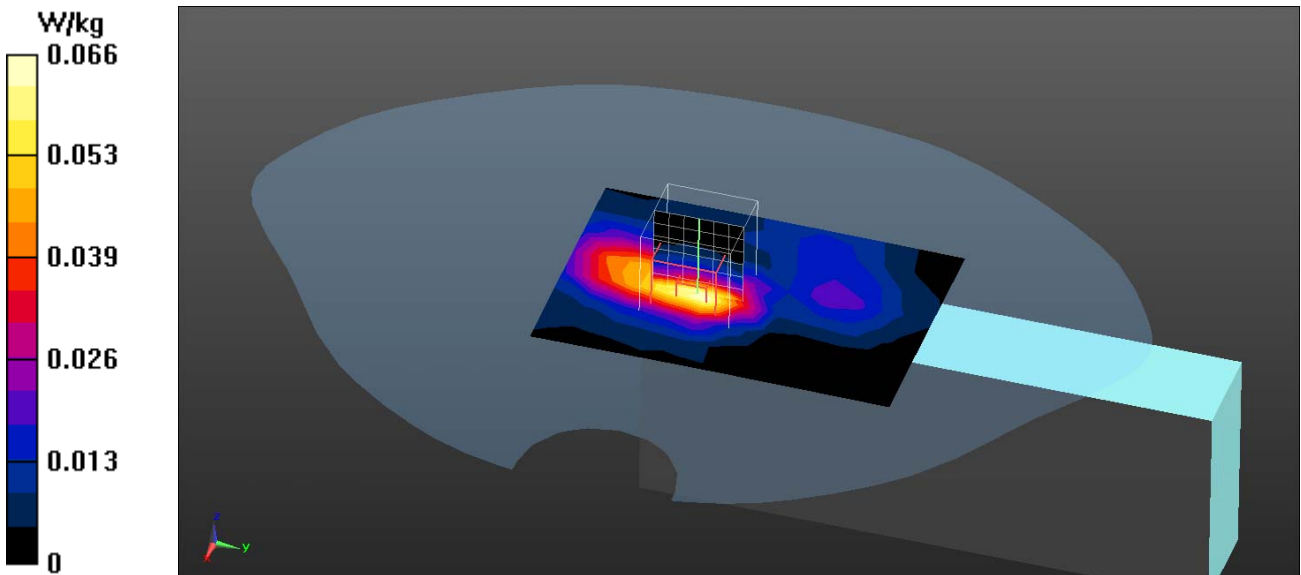
Configuration/Body/Zoom Scan (7x7x7) (7x7x7)/Cube 0: Measurement grid:
 $dx=5\text{mm}$, $dy=5\text{mm}$, $dz=5\text{mm}$

Reference Value = 5.727 V/m; Power Drift = 0.08 dB

Peak SAR (extrapolated) = 0.115 W/kg

SAR(1 g) = 0.061 W/kg; SAR(10 g) = 0.029 W/kg

Maximum value of SAR (measured) = 0.0692 W/kg



Test Laboratory: QuieTek

Date/Time: 1/23/2013

802.11g_6-Top

DUT: Mobile Computer; Type: PA-6030

Communication System: WLAN 2.4G; Frequency: 2437 MHz; Communication System PAR: 0 dB

Medium parameters used: $f = 2437 \text{ MHz}$; $\sigma = 1.9 \text{ mho/m}$; $\epsilon_r = 53.49$; $\rho = 1000 \text{ kg/m}^3$

Phantom section: Flat Section

Ambient Temperature ($^{\circ}\text{C}$) : 21.9, Liquid Temperature ($^{\circ}\text{C}$) : 20.4

Measurement Standard: DASYS5 (IEEE/IEC/ANSI C63.19-2007)

DASY5 Configuration:

- Probe: EX3DV4 - SN3698; ConvF(6.68, 6.68, 6.68); Calibrated: 7/27/2012;
- Sensor-Surface: 4mm (Mechanical Surface Detection)
- Electronics: DAE4 Sn1207; Calibrated: 5/30/2012
- Phantom: SAM with right table; Type: SAM;
- Measurement SW: DASYS52, Version 52.8 (3); SEMCAD X Version 14.6.7 (6848)

Configuration/Body/Area Scan (8x8x1): Measurement grid: $dx=12\text{mm}$, $dy=12\text{mm}$
 Maximum value of SAR (measured) = 0.635 W/kg

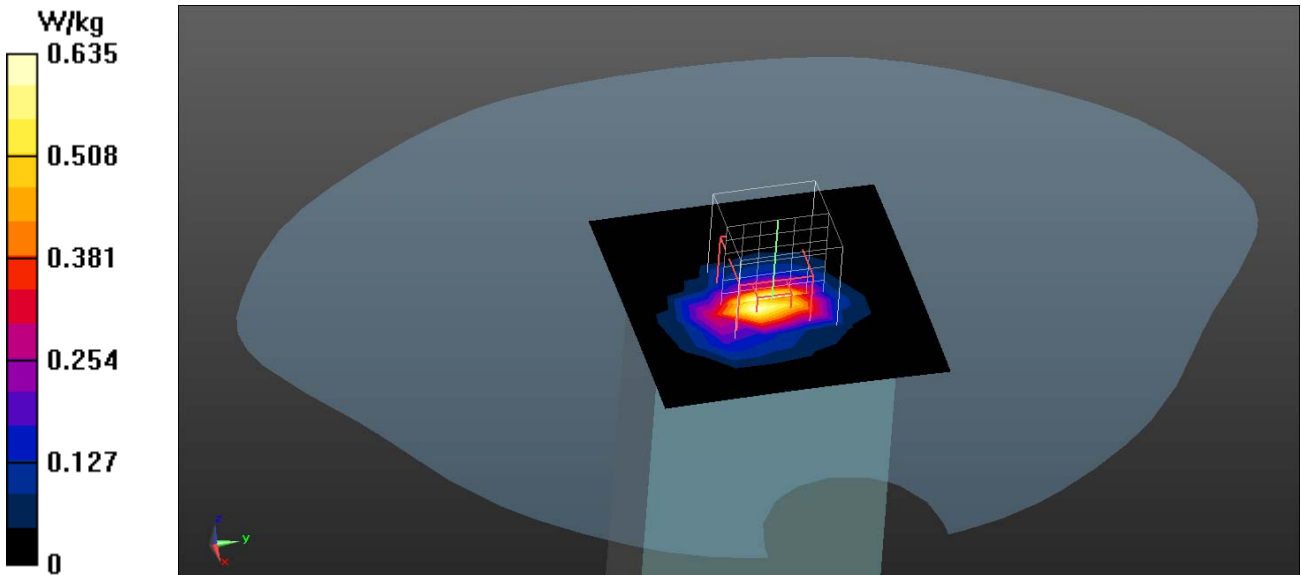
Configuration/Body/Zoom Scan (7x7x7) (7x7x7)/Cube 0: Measurement grid:
 $dx=5\text{mm}$, $dy=5\text{mm}$, $dz=5\text{mm}$

Reference Value = 19.048 V/m; Power Drift = -0.11 dB

Peak SAR (extrapolated) = 1.58 W/kg

SAR(1 g) = 0.612 W/kg; SAR(10 g) = 0.238 W/kg

Maximum value of SAR (measured) = 0.754 W/kg



Test Laboratory: QuieTek

Date/Time: 1/23/2013

802.11n_6-Top

DUT: Mobile Computer; Type: PA-6030

Communication System: WLAN 2.4G; Frequency: 2437 MHz; Communication System PAR: 0 dB

Medium parameters used: $f = 2437 \text{ MHz}$; $\sigma = 1.9 \text{ mho/m}$; $\epsilon_r = 53.49$; $\rho = 1000 \text{ kg/m}^3$

Phantom section: Flat Section

Ambient Temperature ($^{\circ}\text{C}$) : 21.9, Liquid Temperature ($^{\circ}\text{C}$) : 20.4

Measurement Standard: DASYS (IEEE/IEC/ANSI C63.19-2007)

DASY5 Configuration:

- Probe: EX3DV4 - SN3698; ConvF(6.68, 6.68, 6.68); Calibrated: 7/27/2012;
- Sensor-Surface: 4mm (Mechanical Surface Detection)
- Electronics: DAE4 Sn1207; Calibrated: 5/30/2012
- Phantom: SAM with right table; Type: SAM;
- Measurement SW: DASYS2, Version 52.8 (3); SEMCAD X Version 14.6.7 (6848)

Configuration/Body/Area Scan (8x8x1): Measurement grid: $dx=12\text{mm}$, $dy=12\text{mm}$
 Maximum value of SAR (measured) = 0.742 W/kg

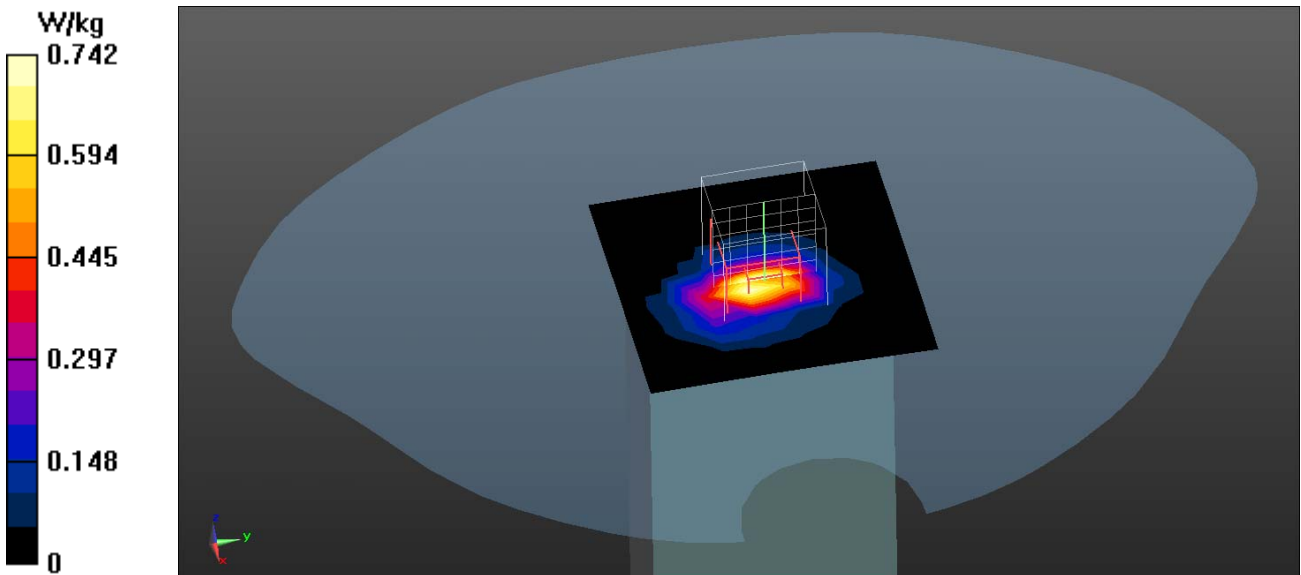
Configuration/Body/Zoom Scan (7x7x7) (7x7x7)/Cube 0: Measurement grid:
 $dx=5\text{mm}$, $dy=5\text{mm}$, $dz=5\text{mm}$

Reference Value = 20.970 V/m; Power Drift = -0.07 dB

Peak SAR (extrapolated) = 1.92 W/kg

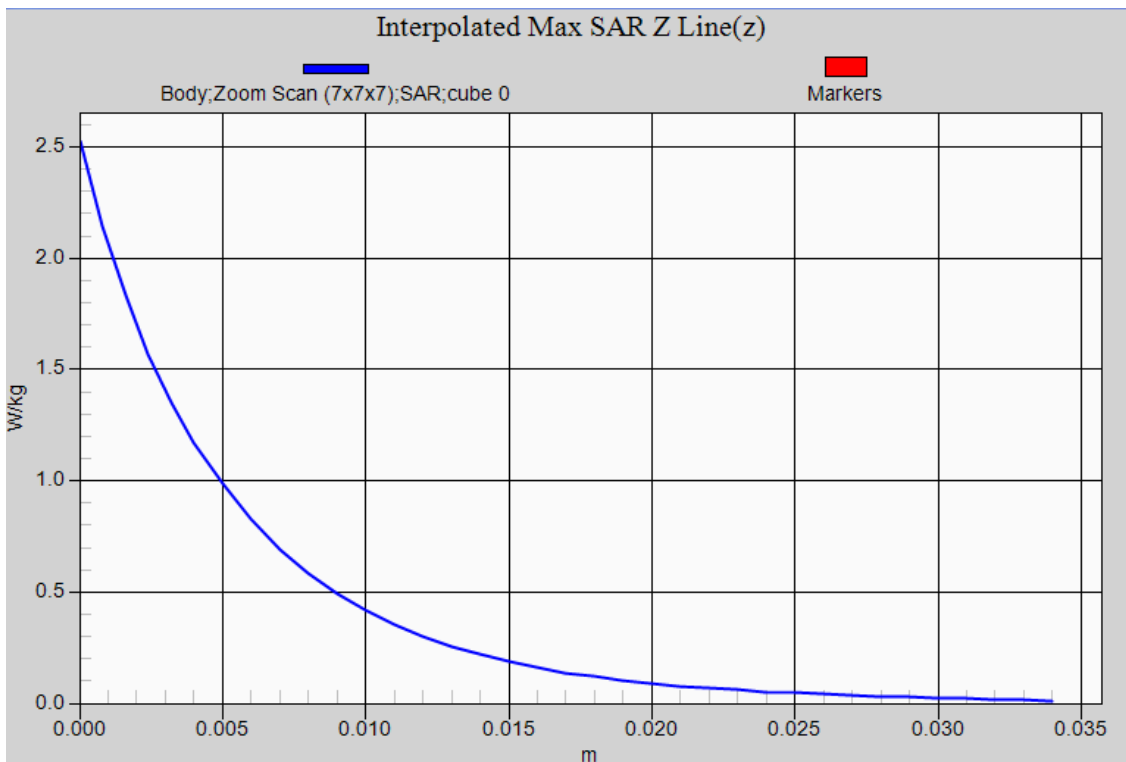
SAR(1 g) = 0.745 W/kg; SAR(10 g) = 0.290 W/kg

Maximum value of SAR (measured) = 0.916 W/kg



802.11b EUT Top Z-Axis plot

Channel: 11



Antenna Kit #5 : Aristotle Enterprises Antenna, P/N: 69-70003-006

Test Laboratory: QuieTek

Date/Time: 2/26/2013

802.11b_1-R-Side

DUT: Mobile Computer; Type: PT-9130-1-1

Communication System: WLAN 2.4G; Frequency: 2412 MHz; Communication System PAR: 0 dB

Medium parameters used: $f = 2412 \text{ MHz}$; $\sigma = 1.94 \text{ mho/m}$; $\epsilon_r = 54.13$; $\rho = 1000 \text{ kg/m}^3$

Phantom section: Flat Section

Ambient Temperature ($^{\circ}\text{C}$) : 21.9, Liquid Temperature ($^{\circ}\text{C}$) : 20.8

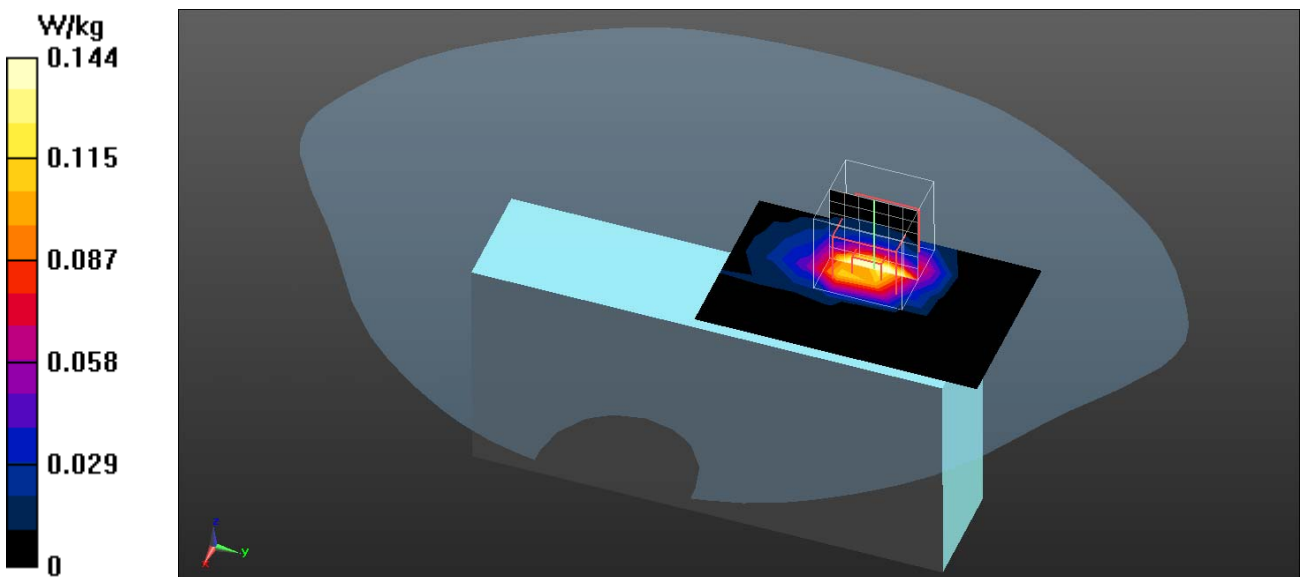
Measurement Standard: DASY5 (IEEE/IEC/ANSI C63.19-2007)

DASY5 Configuration:

- Probe: EX3DV4 - SN3698; ConvF(6.68, 6.68, 6.68); Calibrated: 7/27/2012;
- Sensor-Surface: 3mm (Mechanical Surface Detection)
- Electronics: DAE4 Sn1207; Calibrated: 5/30/2012
- Phantom: SAM with right table; Type: SAM;
- Measurement SW: DASY52, Version 52.8 (3); SEMCAD X Version 14.6.7 (6848)

Configuration/Body/Area Scan (6x9x1): Measurement grid: $dx=12\text{mm}$, $dy=12\text{mm}$
 Maximum value of SAR (measured) = 0.144 W/kg

Configuration/Body/Zoom Scan (7x7x7) (7x7x7)/Cube 0: Measurement grid: $dx=5\text{mm}$, $dy=5\text{mm}$, $dz=5\text{mm}$
 Reference Value = 1.601 V/m; Power Drift = 0.17 dB
 Peak SAR (extrapolated) = 0.328 W/kg
SAR(1 g) = 0.146 W/kg; SAR(10 g) = 0.061 W/kg
 Maximum value of SAR (measured) = 0.200 W/kg



Test Laboratory: QuieTek

Date/Time: 2/26/2013

802.11b_6-R-Side

DUT: Mobile Computer; Type: PT-9130-1-1

Communication System: WLAN 2.4G; Frequency: 2437 MHz; Communication System PAR: 0 dB

Medium parameters used: $f = 2437 \text{ MHz}$; $\sigma = 1.96 \text{ mho/m}$; $\epsilon_r = 53.86$; $\rho = 1000 \text{ kg/m}^3$

Phantom section: Flat Section

Ambient Temperature ($^{\circ}\text{C}$) : 21.9, Liquid Temperature ($^{\circ}\text{C}$) : 20.8

Measurement Standard: DASYS (IEEE/IEC/ANSI C63.19-2007)

DASY5 Configuration:

- Probe: EX3DV4 - SN3698; ConvF(6.68, 6.68, 6.68); Calibrated: 7/27/2012;
- Sensor-Surface: 3mm (Mechanical Surface Detection)
- Electronics: DAE4 Sn1207; Calibrated: 5/30/2012
- Phantom: SAM with right table; Type: SAM;
- Measurement SW: DASYS2, Version 52.8 (3); SEMCAD X Version 14.6.7 (6848)

Configuration/Body/Area Scan (6x9x1): Measurement grid: $dx=12\text{mm}$, $dy=12\text{mm}$
 Maximum value of SAR (measured) = 0.311 W/kg

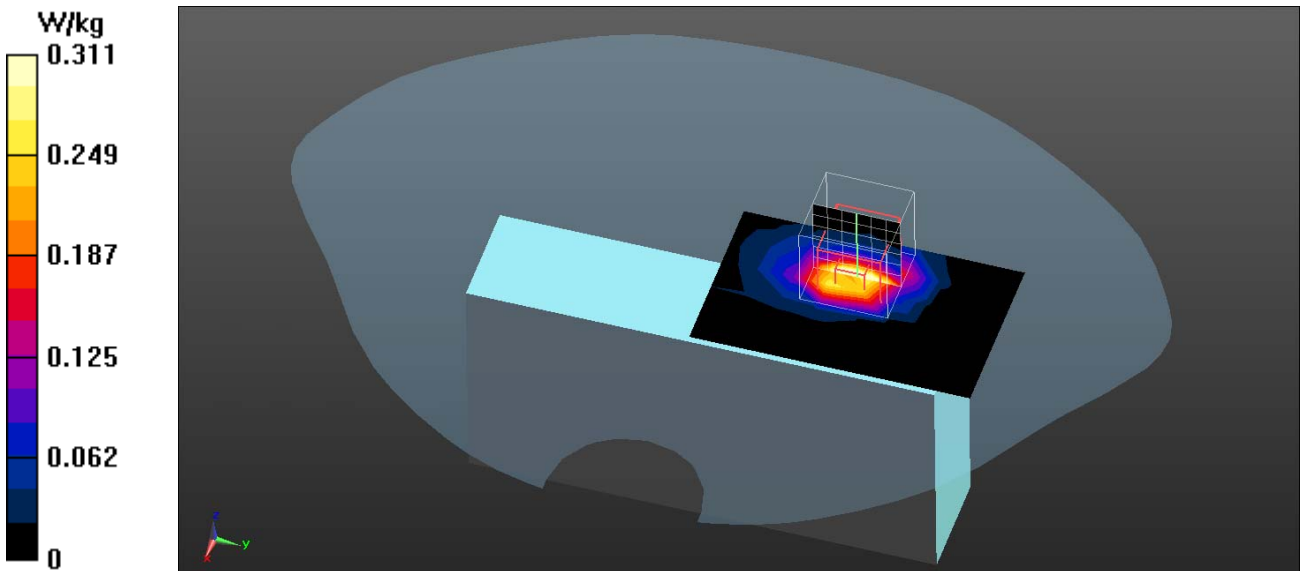
Configuration/Body/Zoom Scan (7x7x7) (7x7x7)/Cube 0: Measurement grid:
 $dx=5\text{mm}$, $dy=5\text{mm}$, $dz=5\text{mm}$

Reference Value = 2.085 V/m; Power Drift = 0.18 dB

Peak SAR (extrapolated) = 0.742 W/kg

SAR(1 g) = 0.322 W/kg; SAR(10 g) = 0.134 W/kg

Maximum value of SAR (measured) = 0.446 W/kg



Test Laboratory: QuieTek

Date/Time: 2/26/2013

802.11b_11-R-Side

DUT: Mobile Computer; Type: PT-9130-1-1

Communication System: WLAN 2.4G; Frequency: 2462 MHz; Communication System PAR: 0 dB

Medium parameters used: $f = 2462 \text{ MHz}$; $\sigma = 1.99 \text{ mho/m}$; $\epsilon_r = 53.37$; $\rho = 1000 \text{ kg/m}^3$

Phantom section: Flat Section

Ambient Temperature ($^{\circ}\text{C}$) : 21.9, Liquid Temperature ($^{\circ}\text{C}$) : 20.8

Measurement Standard: DASY5 (IEEE/IEC/ANSI C63.19-2007)

DASY5 Configuration:

- Probe: EX3DV4 - SN3698; ConvF(6.68, 6.68, 6.68); Calibrated: 7/27/2012;
- Sensor-Surface: 3mm (Mechanical Surface Detection)
- Electronics: DAE4 Sn1207; Calibrated: 5/30/2012
- Phantom: SAM with right table; Type: SAM;
- Measurement SW: DASY52, Version 52.8 (3); SEMCAD X Version 14.6.7 (6848)

Configuration/Body/Area Scan (6x17x1): Measurement grid: $dx=12\text{mm}$, $dy=12\text{mm}$
 Maximum value of SAR (measured) = 0.566 W/kg

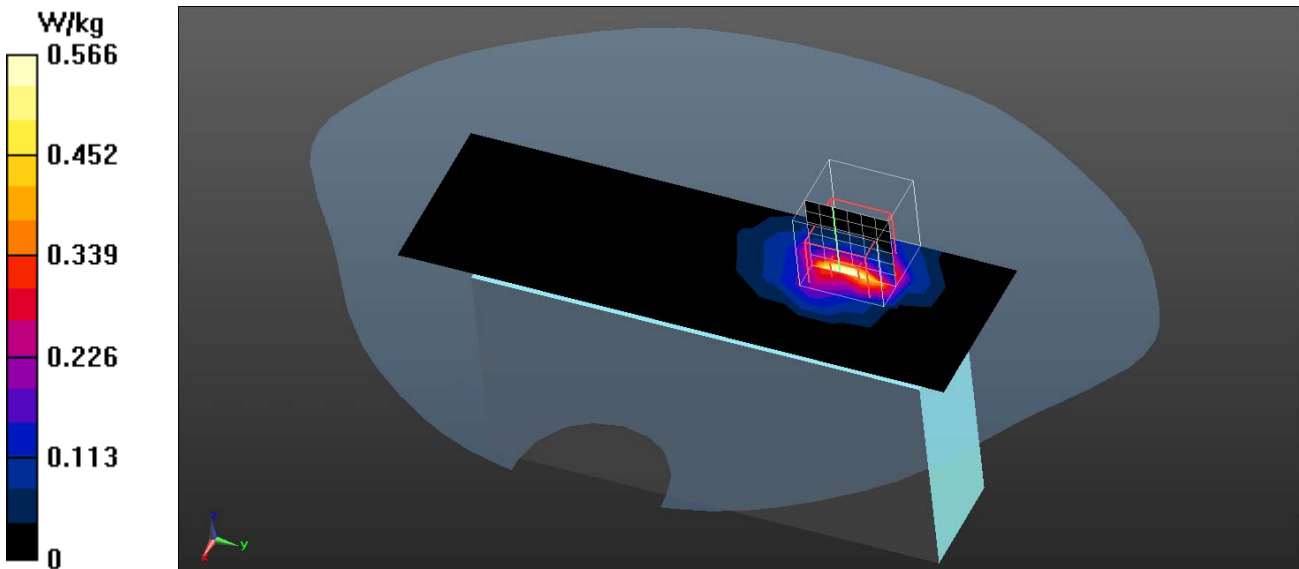
Configuration/Body/Zoom Scan (7x7x7) (7x7x7)/Cube 0: Measurement grid:
 $dx=5\text{mm}$, $dy=5\text{mm}$, $dz=5\text{mm}$

Reference Value = 3.046 V/m; Power Drift = 0.13 dB

Peak SAR (extrapolated) = 1.27 W/kg

SAR(1 g) = 0.548 W/kg; SAR(10 g) = 0.227 W/kg

Maximum value of SAR (measured) = 0.715 W/kg



Test Laboratory: QuieTek

Date/Time: 2/26/2013

802.11b_11-Front

DUT: Mobile Computer; Type: PT-9130-1-1

Communication System: WLAN 2.4G; Frequency: 2462 MHz; Communication System PAR: 0 dB

Medium parameters used: $f = 2462 \text{ MHz}$; $\sigma = 1.99 \text{ mho/m}$; $\epsilon_r = 53.37$; $\rho = 1000 \text{ kg/m}^3$

Phantom section: Flat Section

Ambient Temperature ($^{\circ}\text{C}$) : 21.9, Liquid Temperature ($^{\circ}\text{C}$) : 20.8

Measurement Standard: DASYS (IEEE/IEC/ANSI C63.19-2007)

DASY5 Configuration:

- Probe: EX3DV4 - SN3698; ConvF(6.68, 6.68, 6.68); Calibrated: 7/27/2012;
- Sensor-Surface: 3mm (Mechanical Surface Detection)
- Electronics: DAE4 Sn1207; Calibrated: 5/30/2012
- Phantom: SAM with right table; Type: SAM;
- Measurement SW: DASYS2, Version 52.8 (3); SEMCAD X Version 14.6.7 (6848)

Configuration/Body/Area Scan (9x17x1): Measurement grid: $dx=12\text{mm}$, $dy=12\text{mm}$
 Maximum value of SAR (measured) = 0.0507 W/kg

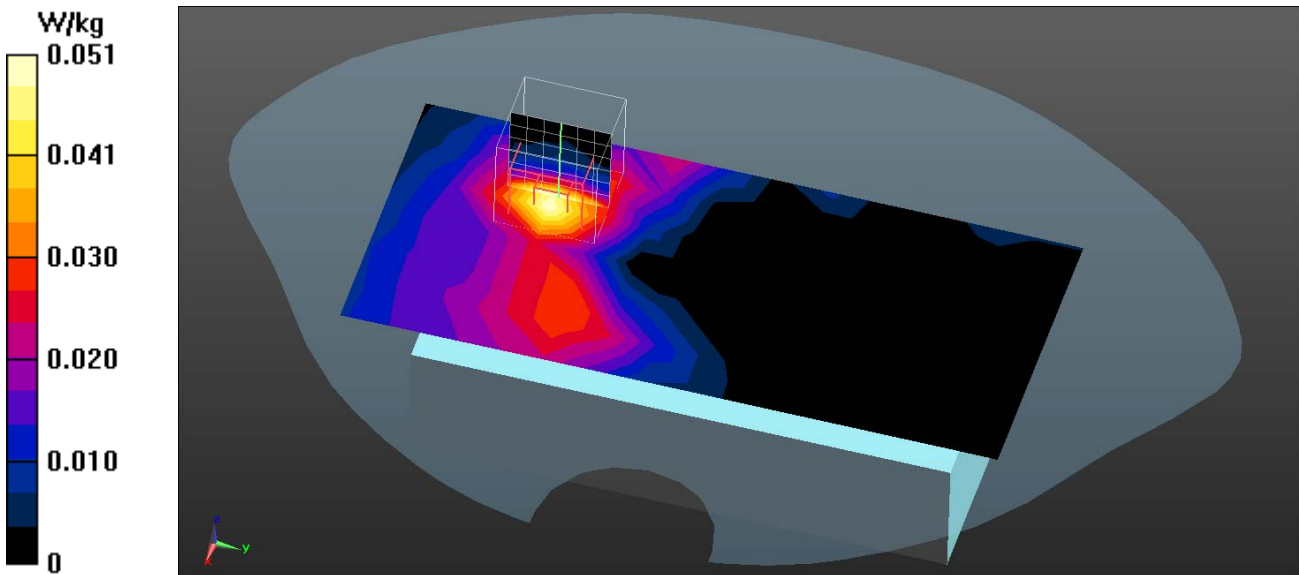
Configuration/Body/Zoom Scan (7x7x7) (7x7x7)/Cube 0: Measurement grid:
 $dx=5\text{mm}$, $dy=5\text{mm}$, $dz=5\text{mm}$

Reference Value = 0 V/m; Power Drift = 0.18 dB

Peak SAR (extrapolated) = 0.0830 W/kg

SAR(1 g) = 0.044 W/kg; SAR(10 g) = 0.022 W/kg

Maximum value of SAR (measured) = 0.0557 W/kg



Test Laboratory: QuieTek

Date/Time: 2/26/2013

802.11b_11-Back

DUT: Mobile Computer; Type: PT-9130-1-1

Communication System: WLAN 2.4G; Frequency: 2462 MHz; Communication System PAR: 0 dB

Medium parameters used: $f = 2462 \text{ MHz}$; $\sigma = 1.99 \text{ mho/m}$; $\epsilon_r = 53.37$; $\rho = 1000 \text{ kg/m}^3$

Phantom section: Flat Section

Ambient Temperature ($^{\circ}\text{C}$) : 21.9, Liquid Temperature ($^{\circ}\text{C}$) : 20.8

Measurement Standard: DASYS (IEEE/IEC/ANSI C63.19-2007)

DASY5 Configuration:

- Probe: EX3DV4 - SN3698; ConvF(6.68, 6.68, 6.68); Calibrated: 7/27/2012;
- Sensor-Surface: 3mm (Mechanical Surface Detection)
- Electronics: DAE4 Sn1207; Calibrated: 5/30/2012
- Phantom: SAM with right table; Type: SAM;
- Measurement SW: DASYS2, Version 52.8 (3); SEMCAD X Version 14.6.7 (6848)

Configuration/Body/Area Scan (9x17x1): Measurement grid: $dx=12\text{mm}$, $dy=12\text{mm}$
 Maximum value of SAR (measured) = 0.718 W/kg

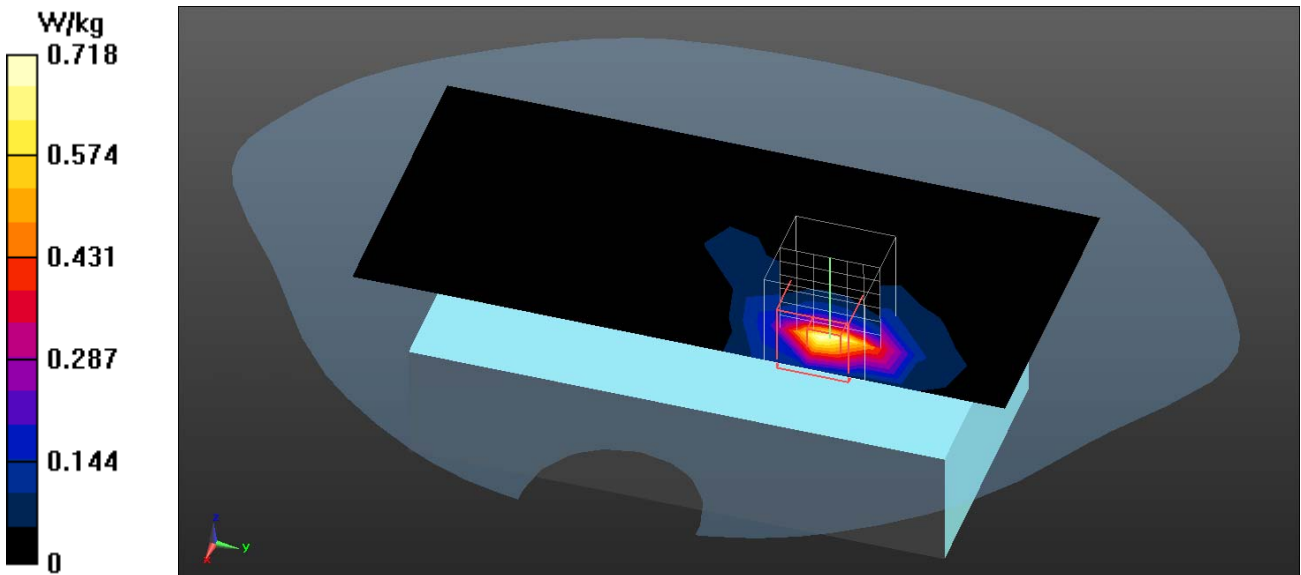
Configuration/Body/Zoom Scan (7x7x7) (7x7x7)/Cube 0: Measurement grid:
 $dx=5\text{mm}$, $dy=5\text{mm}$, $dz=5\text{mm}$

Reference Value = 4.100 V/m; Power Drift = -0.16 dB

Peak SAR (extrapolated) = 1.37 W/kg

SAR(1 g) = 0.514 W/kg; SAR(10 g) = 0.198 W/kg

Maximum value of SAR (measured) = 0.762 W/kg



Test Laboratory: QuieTek

Date/Time: 2/26/2013

802.11b_11-Bottom

DUT: Mobile Computer; Type: PT-9130-1-1

Communication System: WLAN 2.4G; Frequency: 2462 MHz; Communication System PAR: 0 dB

Medium parameters used: $f = 2462 \text{ MHz}$; $\sigma = 1.99 \text{ mho/m}$; $\epsilon_r = 53.37$; $\rho = 1000 \text{ kg/m}^3$

Phantom section: Flat Section

Ambient Temperature ($^{\circ}\text{C}$) : 21.9, Liquid Temperature ($^{\circ}\text{C}$) : 20.8

Measurement Standard: DASYS (IEEE/IEC/ANSI C63.19-2007)

DASY5 Configuration:

- Probe: EX3DV4 - SN3698; ConvF(6.68, 6.68, 6.68); Calibrated: 7/27/2012;
- Sensor-Surface: 3mm (Mechanical Surface Detection)
- Electronics: DAE4 Sn1207; Calibrated: 5/30/2012
- Phantom: SAM with right table; Type: SAM;
- Measurement SW: DASYS2, Version 52.8 (3); SEMCAD X Version 14.6.7 (6848)

Configuration/Body/Area Scan (6x9x1): Measurement grid: $dx=12\text{mm}$, $dy=12\text{mm}$
 Maximum value of SAR (measured) = 0.201 W/kg

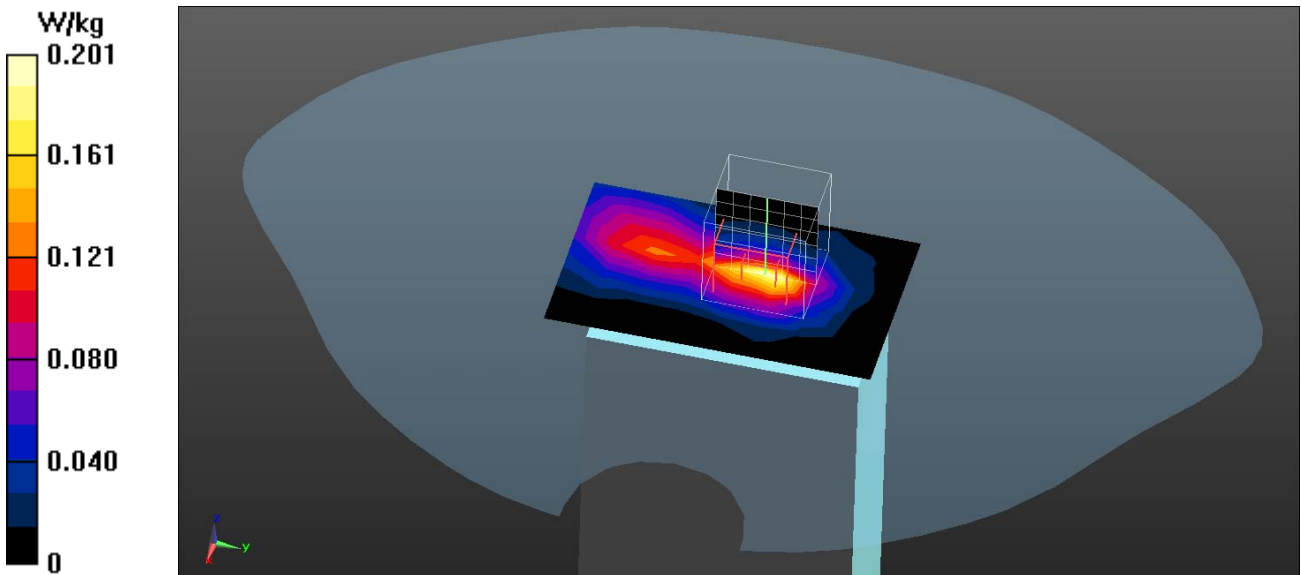
Configuration/Body/Zoom Scan (7x7x7) (7x7x7)/Cube 0: Measurement grid:
 $dx=5\text{mm}$, $dy=5\text{mm}$, $dz=5\text{mm}$

Reference Value = 8.380 V/m; Power Drift = 0.12 dB

Peak SAR (extrapolated) = 0.324 W/kg

SAR(1 g) = 0.159 W/kg; SAR(10 g) = 0.073 W/kg

Maximum value of SAR (measured) = 0.212 W/kg



Test Laboratory: QuieTek

Date/Time: 2/26/2013

802.11g_6-R-Side

DUT: Mobile Computer; Type: PT-9130-1-1

Communication System: WLAN 2.4G; Frequency: 2437 MHz; Communication System PAR: 0 dB

Medium parameters used: $f = 2437 \text{ MHz}$; $\sigma = 1.96 \text{ mho/m}$; $\epsilon_r = 53.86$; $\rho = 1000 \text{ kg/m}^3$

Phantom section: Flat Section

Ambient Temperature ($^{\circ}\text{C}$) : 21.9, Liquid Temperature ($^{\circ}\text{C}$) : 20.8

Measurement Standard: DASYS (IEEE/IEC/ANSI C63.19-2007)

DASY5 Configuration:

- Probe: EX3DV4 - SN3698; ConvF(6.68, 6.68, 6.68); Calibrated: 7/27/2012;
- Sensor-Surface: 3mm (Mechanical Surface Detection)
- Electronics: DAE4 Sn1207; Calibrated: 5/30/2012
- Phantom: SAM with right table; Type: SAM;
- Measurement SW: DASYS2, Version 52.8 (3); SEMCAD X Version 14.6.7 (6848)

Configuration/Body/Area Scan (6x9x1): Measurement grid: $dx=12\text{mm}$, $dy=12\text{mm}$
 Maximum value of SAR (measured) = 0.299 W/kg

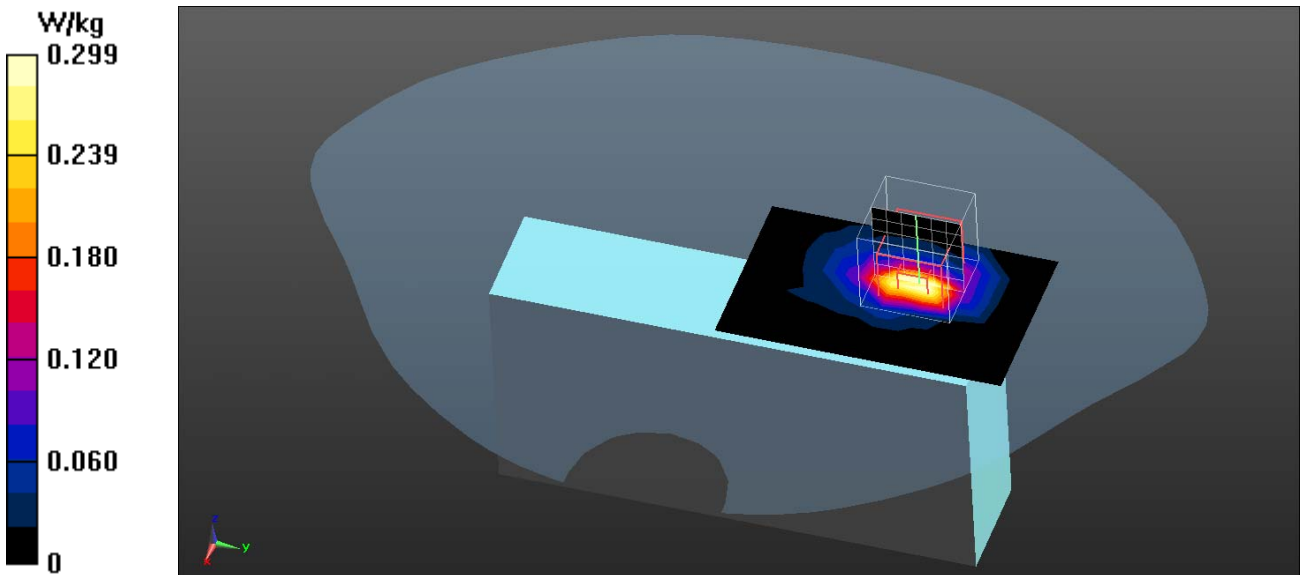
Configuration/Body/Zoom Scan (7x7x7) (7x7x7)/Cube 0: Measurement grid:
 $dx=5\text{mm}$, $dy=5\text{mm}$, $dz=5\text{mm}$

Reference Value = 1.691 V/m; Power Drift = -0.10 dB

Peak SAR (extrapolated) = 0.647 W/kg

SAR(1 g) = 0.277 W/kg; SAR(10 g) = 0.115 W/kg

Maximum value of SAR (measured) = 0.385 W/kg



Test Laboratory: QuieTek

Date/Time: 2/26/2013

802.11n_6-R-Side

DUT: Mobile Computer; Type: PT-9130-1-1

Communication System: WLAN 2.4G; Frequency: 2437 MHz; Communication System PAR: 0 dB

Medium parameters used: $f = 2437 \text{ MHz}$; $\sigma = 1.96 \text{ mho/m}$; $\epsilon_r = 53.86$; $\rho = 1000 \text{ kg/m}^3$

Phantom section: Flat Section

Ambient Temperature ($^{\circ}\text{C}$) : 21.9, Liquid Temperature ($^{\circ}\text{C}$) : 20.8

Measurement Standard: DASY5 (IEEE/IEC/ANSI C63.19-2007)

DASY5 Configuration:

- Probe: EX3DV4 - SN3698; ConvF(6.68, 6.68, 6.68); Calibrated: 7/27/2012;
- Sensor-Surface: 3mm (Mechanical Surface Detection)
- Electronics: DAE4 Sn1207; Calibrated: 5/30/2012
- Phantom: SAM with right table; Type: SAM;
- Measurement SW: DASY52, Version 52.8 (3); SEMCAD X Version 14.6.7 (6848)

Configuration/Body/Area Scan (6x9x1): Measurement grid: $dx=12\text{mm}$, $dy=12\text{mm}$
 Maximum value of SAR (measured) = 0.231 W/kg

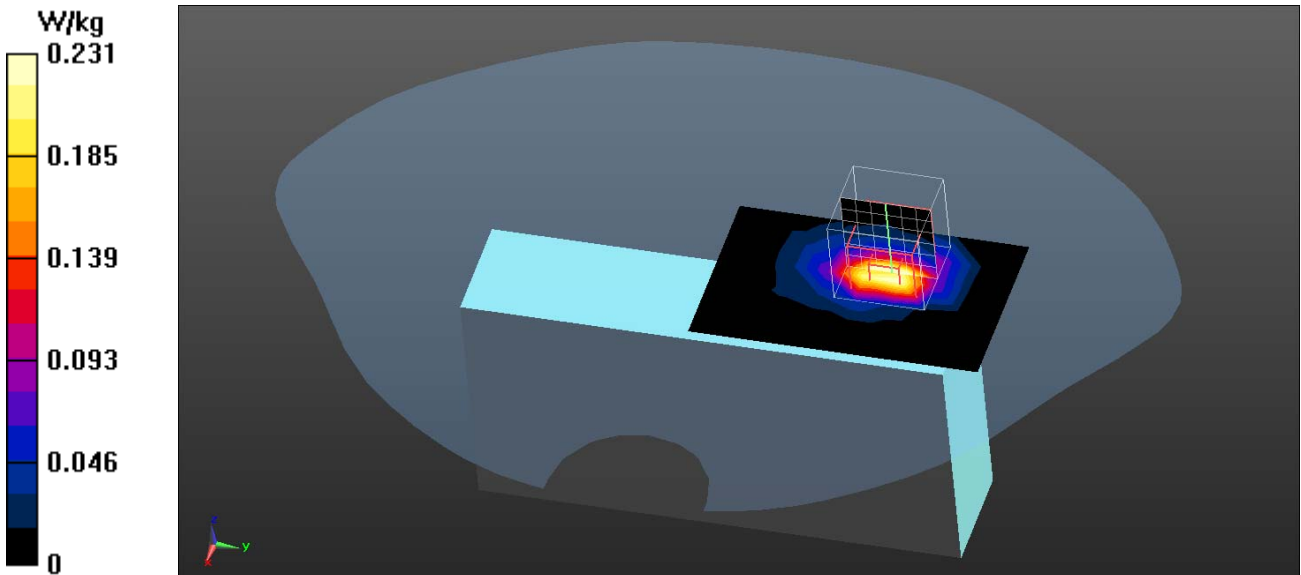
Configuration/Body/Zoom Scan (7x7x7) (7x7x7)/Cube 0: Measurement grid:
 $dx=5\text{mm}$, $dy=5\text{mm}$, $dz=5\text{mm}$

Reference Value = 1.039 V/m; Power Drift = 0.10 dB

Peak SAR (extrapolated) = 0.501 W/kg

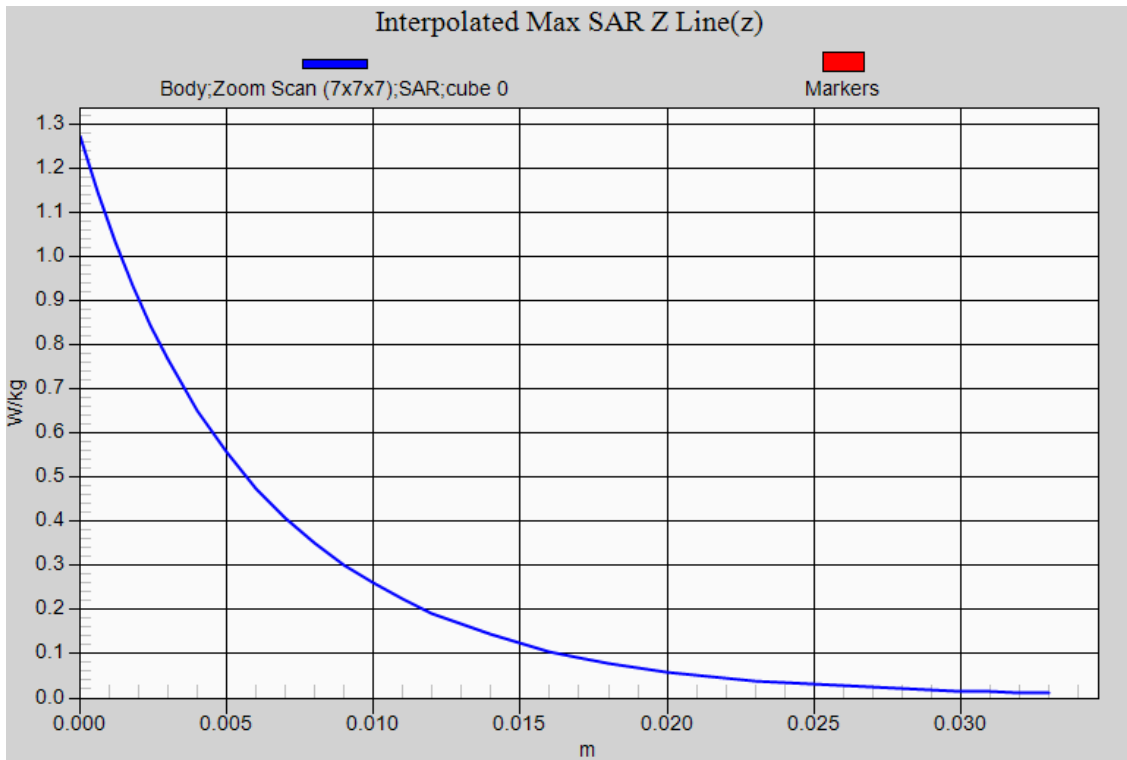
SAR(1 g) = 0.217 W/kg; SAR(10 g) = 0.089 W/kg

Maximum value of SAR (measured) = 0.299 W/kg



802.11b EUT R-Side Z-Axis plot

Channel: 11



Antenna Kit #3 : LYNwave Antenna, P/N: ALB120-052020-150052

Test Laboratory: QuieTek

Date/Time: 2/26/2013

802.11b_1-Top

DUT: Mobile Computer; Type: PT-9132-0-0

Communication System: WLAN 2.4G; Frequency: 2412 MHz; Communication System PAR: 0 dB

Medium parameters used: $f = 2412$ MHz; $\sigma = 1.94$ mho/m; $\epsilon_r = 54.13$; $\rho = 1000$ kg/m³

Phantom section: Flat Section

Ambient Temperature (°C) : 21.9, Liquid Temperature (°C) : 20.8

Measurement Standard: DASYS (IEEE/IEC/ANSI C63.19-2007)

DASY5 Configuration:

- Probe: EX3DV4 - SN3698; ConvF(6.68, 6.68, 6.68); Calibrated: 7/27/2012;
- Sensor-Surface: 3mm (Mechanical Surface Detection)
- Electronics: DAE4 Sn1207; Calibrated: 5/30/2012
- Phantom: SAM with right table; Type: SAM;
- Measurement SW: DASYS2, Version 52.8 (3); SEMCAD X Version 14.6.7 (6848)

Configuration/Body/Area Scan (6x9x1): Measurement grid: dx=12mm, dy=12mm

Maximum value of SAR (measured) = 0.261 W/kg

Configuration/Body/Zoom Scan (7x7x7) (7x7x7)/Cube 0: Measurement grid:

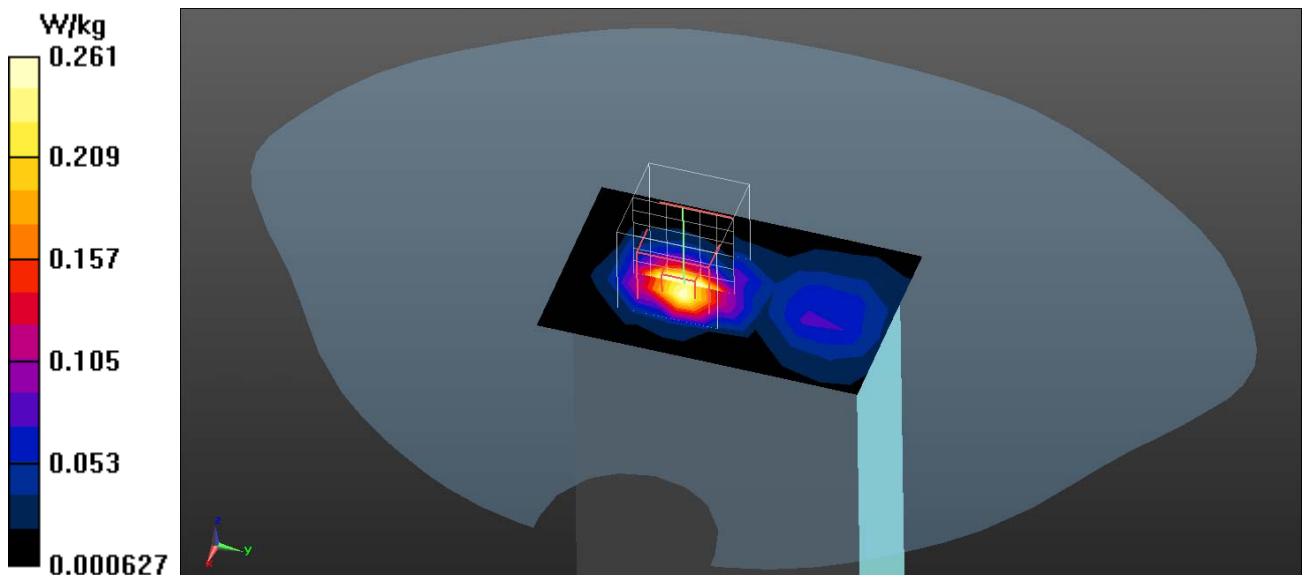
dx=5mm, dy=5mm, dz=5mm

Reference Value = 7.263 V/m; Power Drift = -0.04 dB

Peak SAR (extrapolated) = 0.522 W/kg

SAR(1 g) = 0.247 W/kg; SAR(10 g) = 0.103 W/kg

Maximum value of SAR (measured) = 0.341 W/kg



Test Laboratory: QuieTek

Date/Time: 2/26/2013

802.11b_6-Top

DUT: Mobile Computer; Type: PT-9132-0-0

Communication System: WLAN 2.4G; Frequency: 2437 MHz; Communication System PAR: 0 dB

Medium parameters used: $f = 2437 \text{ MHz}$; $\sigma = 1.96 \text{ mho/m}$; $\epsilon_r = 53.86$; $\rho = 1000 \text{ kg/m}^3$

Phantom section: Flat Section

Ambient Temperature ($^{\circ}\text{C}$) : 21.9, Liquid Temperature ($^{\circ}\text{C}$) : 20.8

Measurement Standard: DASYS (IEEE/IEC/ANSI C63.19-2007)

DASY5 Configuration:

- Probe: EX3DV4 - SN3698; ConvF(6.68, 6.68, 6.68); Calibrated: 7/27/2012;
- Sensor-Surface: 3mm (Mechanical Surface Detection)
- Electronics: DAE4 Sn1207; Calibrated: 5/30/2012
- Phantom: SAM with right table; Type: SAM;
- Measurement SW: DASYS2, Version 52.8 (3); SEMCAD X Version 14.6.7 (6848)

Configuration/Body/Area Scan (6x9x1): Measurement grid: $dx=12\text{mm}$, $dy=12\text{mm}$
 Maximum value of SAR (measured) = 0.435 W/kg

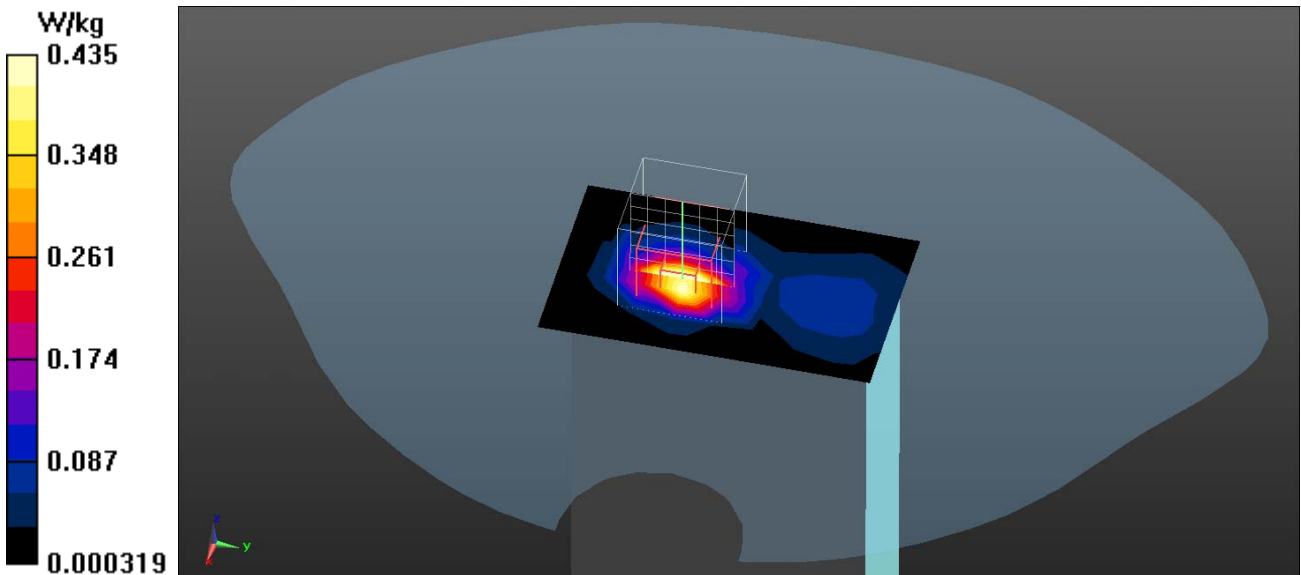
Configuration/Body/Zoom Scan (7x7x7) (7x7x7)/Cube 0: Measurement grid:
 $dx=5\text{mm}$, $dy=5\text{mm}$, $dz=5\text{mm}$

Reference Value = 9.206 V/m; Power Drift = 0.11 dB

Peak SAR (extrapolated) = 0.884 W/kg

SAR(1 g) = 0.421 W/kg; SAR(10 g) = 0.176 W/kg

Maximum value of SAR (measured) = 0.568 W/kg



Test Laboratory: QuieTek

Date/Time: 2/26/2013

802.11b_11-Top

DUT: Mobile Computer; Type: PT-9132-0-0

Communication System: WLAN 2.4G; Frequency: 2462 MHz; Communication System PAR: 0 dB

Medium parameters used: $f = 2462 \text{ MHz}$; $\sigma = 1.99 \text{ mho/m}$; $\epsilon_r = 53.37$; $\rho = 1000 \text{ kg/m}^3$

Phantom section: Flat Section

Ambient Temperature ($^{\circ}\text{C}$) : 21.9, Liquid Temperature ($^{\circ}\text{C}$) : 20.8

Measurement Standard: DASYS (IEEE/IEC/ANSI C63.19-2007)

DASY5 Configuration:

- Probe: EX3DV4 - SN3698; ConvF(6.68, 6.68, 6.68); Calibrated: 7/27/2012;
- Sensor-Surface: 3mm (Mechanical Surface Detection)
- Electronics: DAE4 Sn1207; Calibrated: 5/30/2012
- Phantom: SAM with right table; Type: SAM;
- Measurement SW: DASYS2, Version 52.8 (3); SEMCAD X Version 14.6.7 (6848)

Configuration/Body/Area Scan (6x9x1): Measurement grid: $dx=12\text{mm}$, $dy=12\text{mm}$
 Maximum value of SAR (measured) = 0.507 W/kg

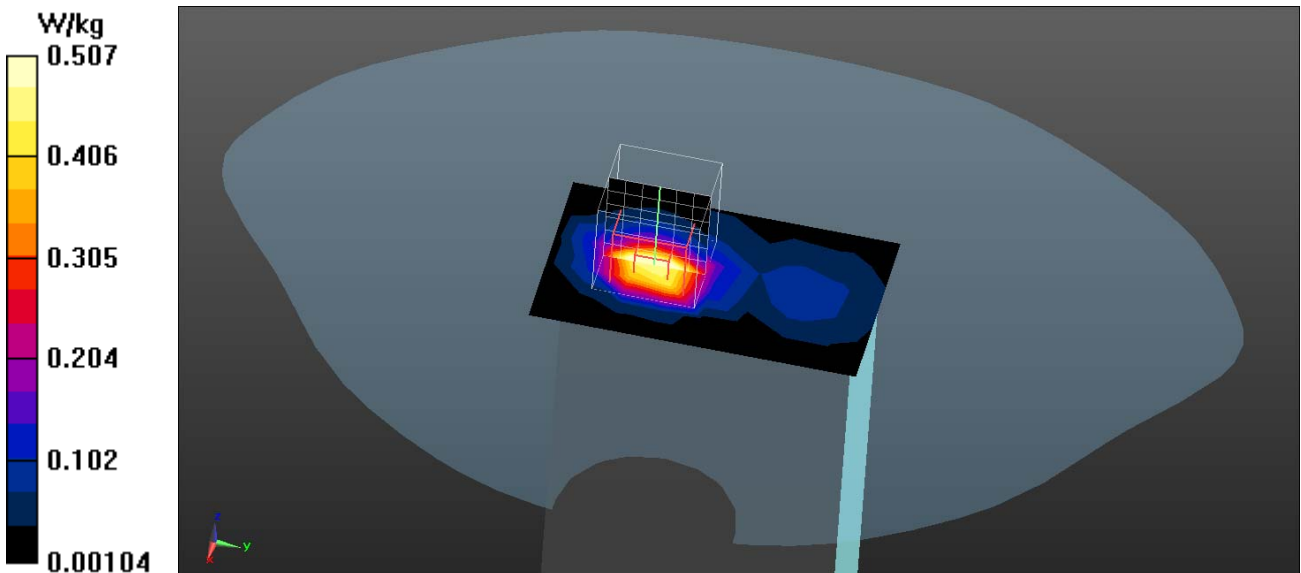
Configuration/Body/Zoom Scan (7x7x7) (7x7x7)/Cube 0: Measurement grid:
 $dx=5\text{mm}$, $dy=5\text{mm}$, $dz=5\text{mm}$

Reference Value = 8.303 V/m; Power Drift = 0.09 dB

Peak SAR (extrapolated) = 1.10 W/kg

SAR(1 g) = 0.522 W/kg; SAR(10 g) = 0.223 W/kg

Maximum value of SAR (measured) = 0.705 W/kg



Test Laboratory: QuieTek

Date/Time: 2/26/2013

802.11b_11-Front

DUT: Mobile Computer; Type: PT-9132-0-0

Communication System: WLAN 2.4G; Frequency: 2462 MHz; Communication System PAR: 0 dB

Medium parameters used: $f = 2462 \text{ MHz}$; $\sigma = 1.99 \text{ mho/m}$; $\epsilon_r = 53.37$; $\rho = 1000 \text{ kg/m}^3$

Phantom section: Flat Section

Ambient Temperature ($^{\circ}\text{C}$) : 21.9, Liquid Temperature ($^{\circ}\text{C}$) : 20.8

Measurement Standard: DASYS (IEEE/IEC/ANSI C63.19-2007)

DASY5 Configuration:

- Probe: EX3DV4 - SN3698; ConvF(6.68, 6.68, 6.68); Calibrated: 7/27/2012;
- Sensor-Surface: 3mm (Mechanical Surface Detection)
- Electronics: DAE4 Sn1207; Calibrated: 5/30/2012
- Phantom: SAM with right table; Type: SAM;
- Measurement SW: DASYS2, Version 52.8 (3); SEMCAD X Version 14.6.7 (6848)

Configuration/Body/Area Scan (9x17x1): Measurement grid: $dx=12\text{mm}$, $dy=12\text{mm}$
 Maximum value of SAR (measured) = 0.449 W/kg

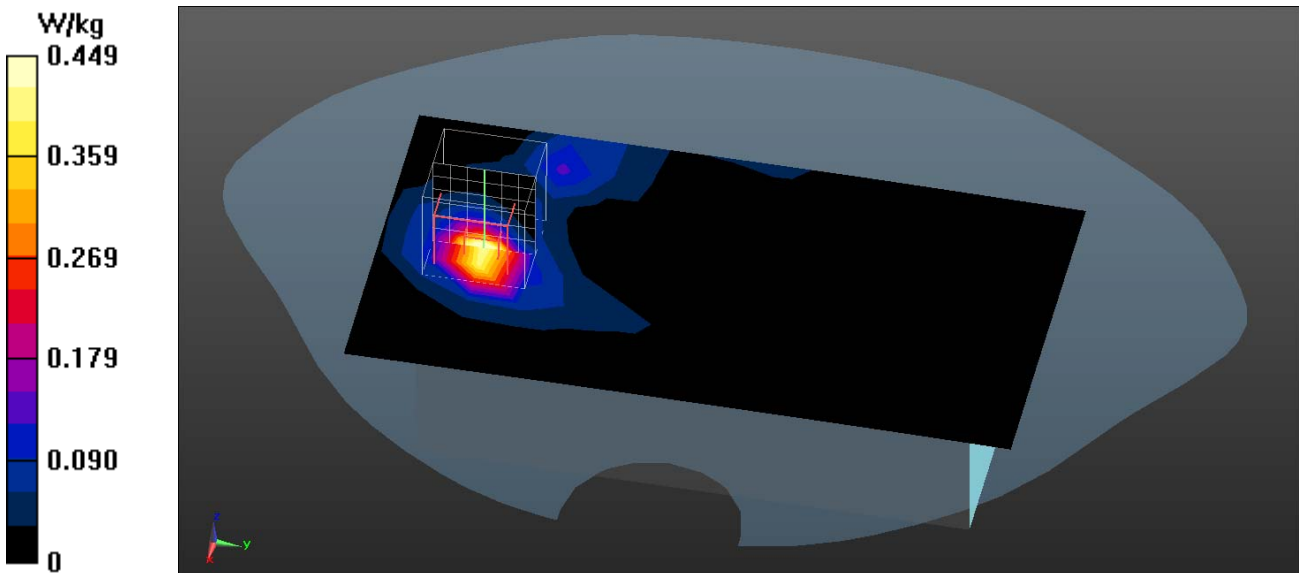
Configuration/Body/Zoom Scan (7x7x7) (7x7x7)/Cube 0: Measurement grid:
 $dx=5\text{mm}$, $dy=5\text{mm}$, $dz=5\text{mm}$

Reference Value = 1.546 V/m; Power Drift = 0.10 dB

Peak SAR (extrapolated) = 0.851 W/kg

SAR(1 g) = 0.397 W/kg; SAR(10 g) = 0.168 W/kg

Maximum value of SAR (measured) = 0.543 W/kg



Test Laboratory: QuieTek

Date/Time: 2/26/2013

802.11b_11-R-Side

DUT: Mobile Computer; Type: PT-9132-0-0

Communication System: WLAN 2.4G; Frequency: 2462 MHz; Communication System PAR: 0 dB

Medium parameters used: $f = 2462 \text{ MHz}$; $\sigma = 1.99 \text{ mho/m}$; $\epsilon_r = 53.37$; $\rho = 1000 \text{ kg/m}^3$

Phantom section: Flat Section

Ambient Temperature ($^{\circ}\text{C}$) : 21.9, Liquid Temperature ($^{\circ}\text{C}$) : 20.8

Measurement Standard: DASYS (IEEE/IEC/ANSI C63.19-2007)

DASY5 Configuration:

- Probe: EX3DV4 - SN3698; ConvF(6.68, 6.68, 6.68); Calibrated: 7/27/2012;
- Sensor-Surface: 3mm (Mechanical Surface Detection)
- Electronics: DAE4 Sn1207; Calibrated: 5/30/2012
- Phantom: SAM with right table; Type: SAM;
- Measurement SW: DASYS2, Version 52.8 (3); SEMCAD X Version 14.6.7 (6848)

Configuration/Body/Area Scan (6x17x1): Measurement grid: $dx=12\text{mm}$, $dy=12\text{mm}$
 Maximum value of SAR (measured) = 0.142 W/kg

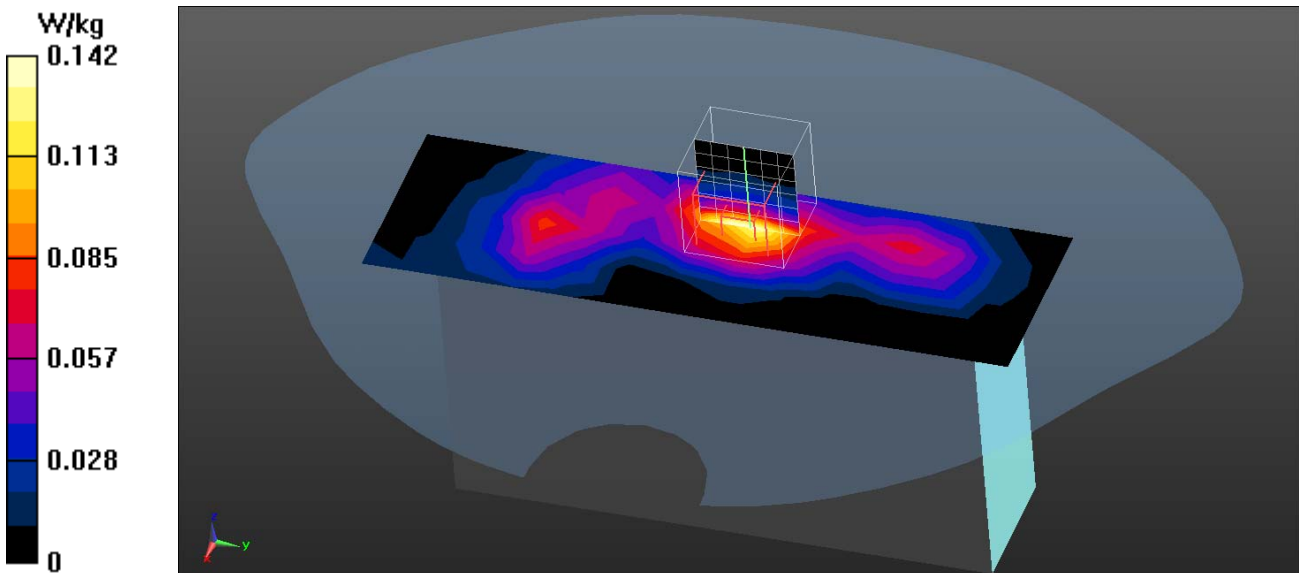
Configuration/Body/Zoom Scan (7x7x7) (7x7x7)/Cube 0: Measurement grid:
 $dx=5\text{mm}$, $dy=5\text{mm}$, $dz=5\text{mm}$

Reference Value = 6.202 V/m; Power Drift = 0.09 dB

Peak SAR (extrapolated) = 0.229 W/kg

SAR(1 g) = 0.118 W/kg; SAR(10 g) = 0.059 W/kg

Maximum value of SAR (measured) = 0.149 W/kg



Test Laboratory: QuieTek

Date/Time: 2/26/2013

802.11b_11-L-Side

DUT: Mobile Computer; Type: PT-9132-0-0

Communication System: WLAN 2.4G; Frequency: 2462 MHz; Communication System PAR: 0 dB

Medium parameters used: $f = 2462 \text{ MHz}$; $\sigma = 1.99 \text{ mho/m}$; $\epsilon_r = 53.37$; $\rho = 1000 \text{ kg/m}^3$

Phantom section: Flat Section

Ambient Temperature ($^{\circ}\text{C}$) : 21.9, Liquid Temperature ($^{\circ}\text{C}$) : 20.8

Measurement Standard: DASYS (IEEE/IEC/ANSI C63.19-2007)

DASY5 Configuration:

- Probe: EX3DV4 - SN3698; ConvF(6.68, 6.68, 6.68); Calibrated: 7/27/2012;
- Sensor-Surface: 3mm (Mechanical Surface Detection)
- Electronics: DAE4 Sn1207; Calibrated: 5/30/2012
- Phantom: SAM with right table; Type: SAM;
- Measurement SW: DASYS2, Version 52.8 (3); SEMCAD X Version 14.6.7 (6848)

Configuration/Body/Area Scan (6x17x1): Measurement grid: $dx=12\text{mm}$, $dy=12\text{mm}$
 Maximum value of SAR (measured) = 0.0941 W/kg

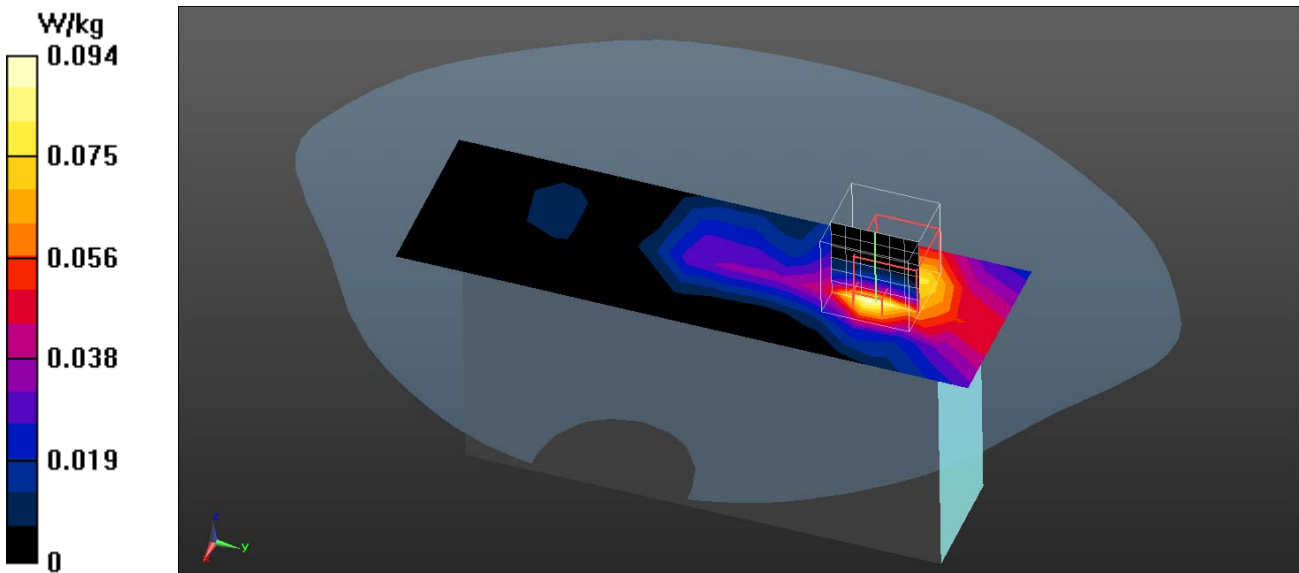
Configuration/Body/Zoom Scan (7x7x7) (7x7x7)/Cube 0: Measurement grid:
 $dx=5\text{mm}$, $dy=5\text{mm}$, $dz=5\text{mm}$

Reference Value = 4.037 V/m; Power Drift = -0.04 dB

Peak SAR (extrapolated) = 0.150 W/kg

SAR(1 g) = 0.071 W/kg; SAR(10 g) = 0.036 W/kg

Maximum value of SAR (measured) = 0.0953 W/kg



Test Laboratory: QuieTek

Date/Time: 2/26/2013

802.11g_6-Top

DUT: Mobile Computer; Type: PT-9132-0-0

Communication System: WLAN 2.4G; Frequency: 2437 MHz; Communication System PAR: 0 dB

Medium parameters used: $f = 2437 \text{ MHz}$; $\sigma = 1.96 \text{ mho/m}$; $\epsilon_r = 53.86$; $\rho = 1000 \text{ kg/m}^3$

Phantom section: Flat Section

Ambient Temperature ($^{\circ}\text{C}$) : 21.9, Liquid Temperature ($^{\circ}\text{C}$) : 20.8

Measurement Standard: DASY5 (IEEE/IEC/ANSI C63.19-2007)

DASY5 Configuration:

- Probe: EX3DV4 - SN3698; ConvF(6.68, 6.68, 6.68); Calibrated: 7/27/2012;
- Sensor-Surface: 3mm (Mechanical Surface Detection)
- Electronics: DAE4 Sn1207; Calibrated: 5/30/2012
- Phantom: SAM with right table; Type: SAM;
- Measurement SW: DASY52, Version 52.8 (3); SEMCAD X Version 14.6.7 (6848)

Configuration/Body/Area Scan (6x9x1): Measurement grid: $dx=12\text{mm}$, $dy=12\text{mm}$
 Maximum value of SAR (measured) = 0.283 W/kg

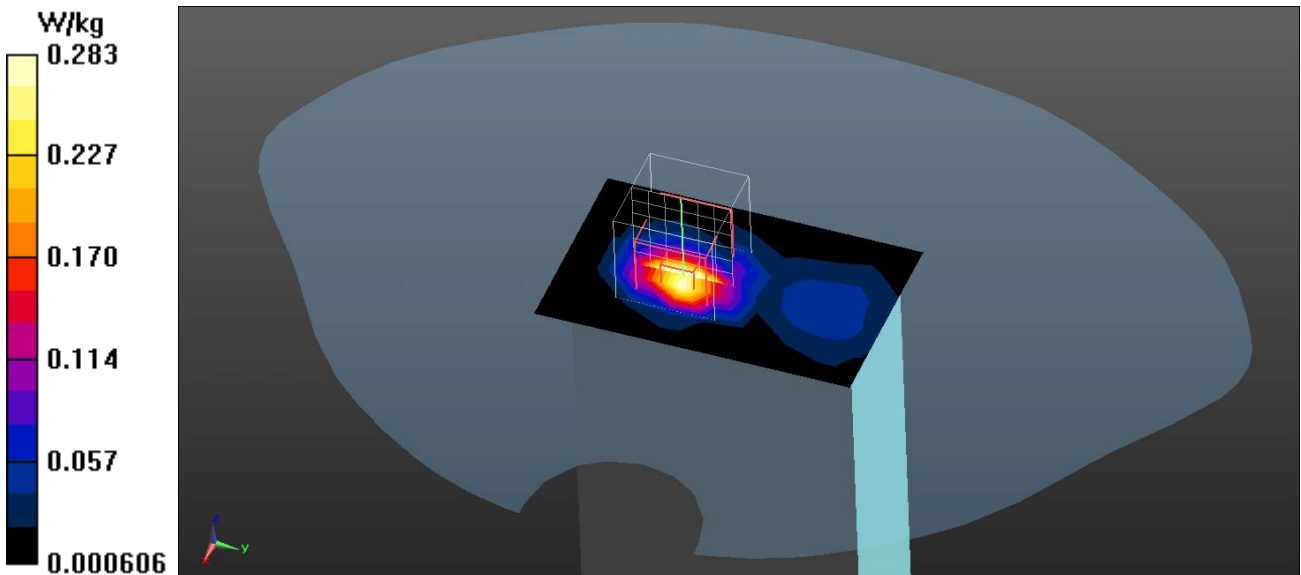
Configuration/Body/Zoom Scan (7x7x7) (7x7x7)/Cube 0: Measurement grid:
 $dx=5\text{mm}$, $dy=5\text{mm}$, $dz=5\text{mm}$

Reference Value = 7.731 V/m; Power Drift = -0.09 dB

Peak SAR (extrapolated) = 0.566 W/kg

SAR(1 g) = 0.267 W/kg; SAR(10 g) = 0.112 W/kg

Maximum value of SAR (measured) = 0.364 W/kg



Test Laboratory: QuieTek

Date/Time: 2/26/2013

802.11n_6-Top

DUT: Mobile Computer; Type: PT-9132-0-0

Communication System: WLAN 2.4G; Frequency: 2437 MHz; Communication System PAR: 0 dB

Medium parameters used: $f = 2437 \text{ MHz}$; $\sigma = 1.96 \text{ mho/m}$; $\epsilon_r = 53.86$; $\rho = 1000 \text{ kg/m}^3$

Phantom section: Flat Section

Ambient Temperature ($^{\circ}\text{C}$) : 21.9, Liquid Temperature ($^{\circ}\text{C}$) : 20.8

Measurement Standard: DASYS (IEEE/IEC/ANSI C63.19-2007)

DASY5 Configuration:

- Probe: EX3DV4 - SN3698; ConvF(6.68, 6.68, 6.68); Calibrated: 7/27/2012;
- Sensor-Surface: 3mm (Mechanical Surface Detection)
- Electronics: DAE4 Sn1207; Calibrated: 5/30/2012
- Phantom: SAM with right table; Type: SAM;
- Measurement SW: DASYS2, Version 52.8 (3); SEMCAD X Version 14.6.7 (6848)

Configuration/Body/Area Scan (6x9x1): Measurement grid: $dx=12\text{mm}$, $dy=12\text{mm}$
 Maximum value of SAR (measured) = 0.276 W/kg

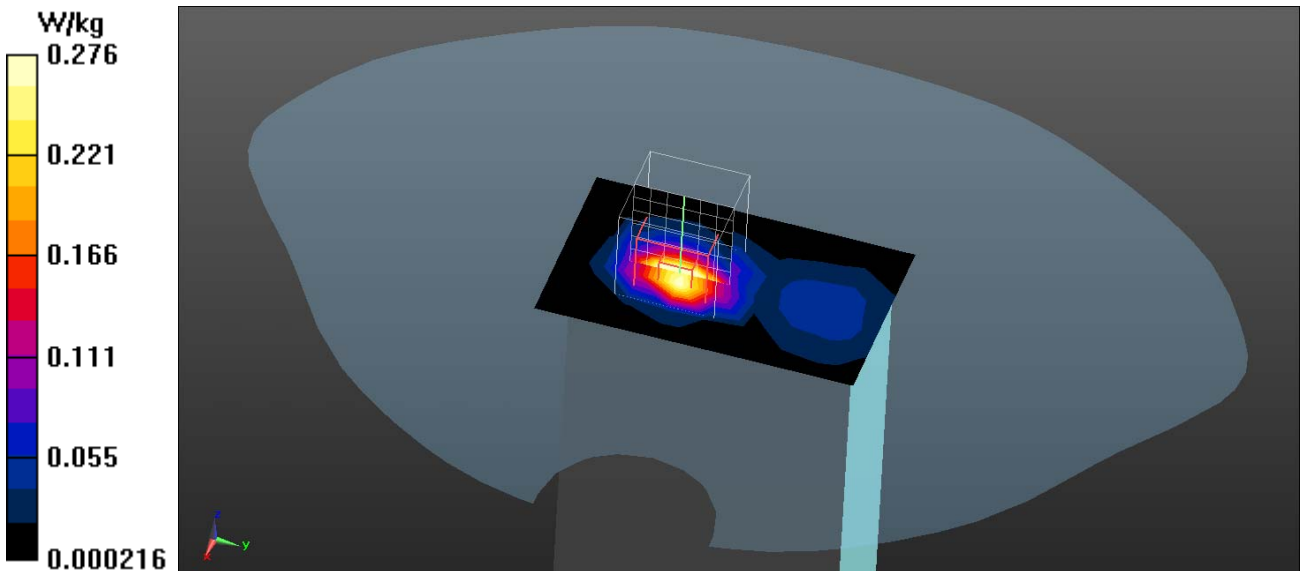
Configuration/Body/Zoom Scan (7x7x7) (7x7x7)/Cube 0: Measurement grid:
 $dx=5\text{mm}$, $dy=5\text{mm}$, $dz=5\text{mm}$

Reference Value = 7.530 V/m; Power Drift = -0.03 dB

Peak SAR (extrapolated) = 0.549 W/kg

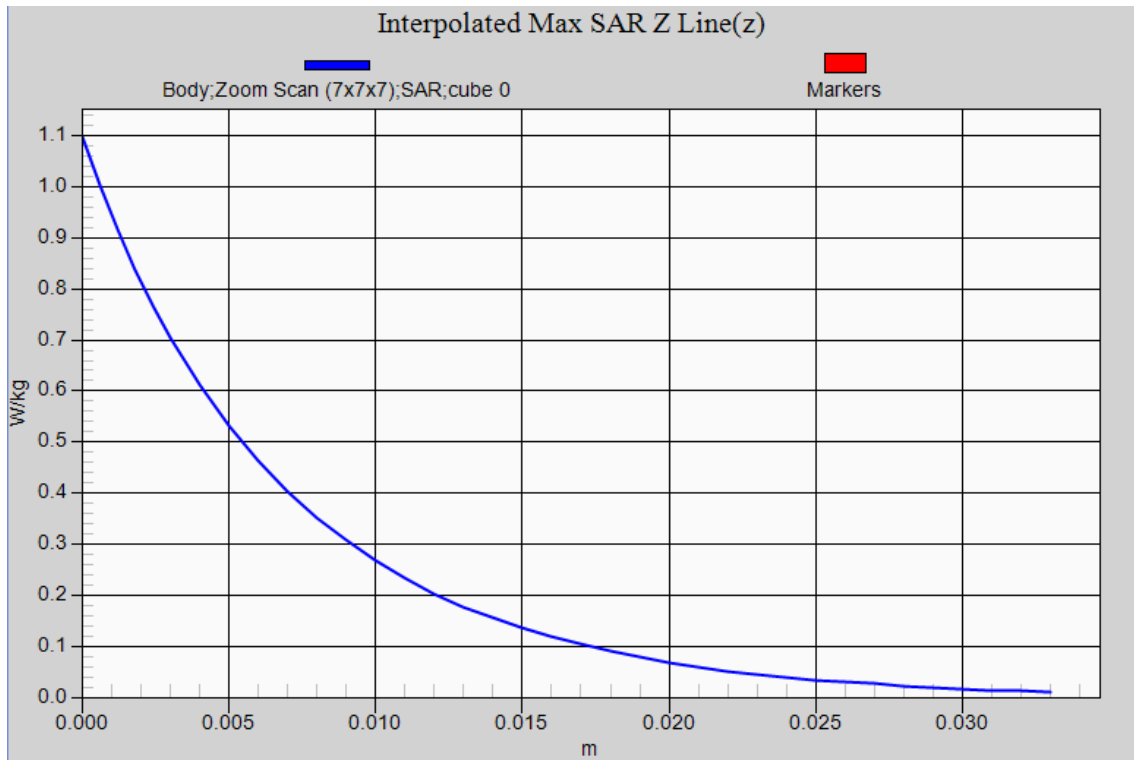
SAR(1 g) = 0.260 W/kg; SAR(10 g) = 0.109 W/kg

Maximum value of SAR (measured) = 0.354 W/kg



802.11b EUT Top Z-Axis plot

Channel: 11





Appendix D. Probe Calibration Data

Object: EX3DV4- SN: 3698

**Calibration Laboratory of
Schmid & Partner
Engineering AG**
Zeughausstrasse 43, 8004 Zurich, Switzerland



S Schweizerischer Kalibrierdienst
S Service suisse d'étalonnage
S Servizio svizzero di taratura
S Swiss Calibration Service

Accredited by the Swiss Accreditation Service (SAS)
The Swiss Accreditation Service is one of the signatories to the EA
Multilateral Agreement for the recognition of calibration certificates

Accreditation No.: **SCS 108**

Client **Quietek (Auden)**

Certificate No: **EX3-3698_Jul12**

CALIBRATION CERTIFICATE

Object **EX3DV4 - SN:3698**

Calibration procedure(s) **QA CAL-01.v8, QA CAL-14.v3, QA CAL-23.v4, QA CAL-25.v4
Calibration procedure for dosimetric E-field probes**

Calibration date: **July 27, 2012**

This calibration certificate documents the traceability to national standards, which realize the physical units of measurements (SI).
The measurements and the uncertainties with confidence probability are given on the following pages and are part of the certificate.

All calibrations have been conducted in the closed laboratory facility: environment temperature (22 ± 3)°C and humidity < 70%.

Calibration Equipment used (M&TE critical for calibration)

| Primary Standards | ID | Cal Date (Certificate No.) | Scheduled Calibration |
|----------------------------|-----------------|-----------------------------------|------------------------|
| Power meter E4419B | GB41293874 | 29-Mar-12 (No. 217-01508) | Apr-13 |
| Power sensor E4412A | MY41498087 | 29-Mar-12 (No. 217-01508) | Apr-13 |
| Reference 3 dB Attenuator | SN: S5054 (3c) | 27-Mar-12 (No. 217-01531) | Apr-13 |
| Reference 20 dB Attenuator | SN: S5086 (20b) | 27-Mar-12 (No. 217-01529) | Apr-13 |
| Reference 30 dB Attenuator | SN: S5129 (30b) | 27-Mar-12 (No. 217-01532) | Apr-13 |
| Reference Probe ES3DV2 | SN: 3013 | 29-Dec-11 (No. ES3-3013 Dec11) | Dec-12 |
| DAE4 | SN: 660 | 20-Jun-12 (No. DAE4-660_Jun12) | Jun-13 |
| Secondary Standards | ID | Check Date (in house) | Scheduled Check |
| RF generator HP 8648C | US3642U01700 | 4-Aug-99 (in house check Apr-11) | In house check: Apr-13 |
| Network Analyzer HP 8753E | US37390585 | 18-Oct-01 (in house check Oct-11) | In house check: Oct-12 |

| | | | |
|----------------|--------------------------------|--|---------------|
| Calibrated by: | Name Claudio Leubler | Function Laboratory Technician | Signature |
| Approved by: | Name Katja Pokovic | Function Technical Manager | Signature |

Issued: July 27, 2012

This calibration certificate shall not be reproduced except in full without written approval of the laboratory.



Accredited by the Swiss Accreditation Service (SAS)
The Swiss Accreditation Service is one of the signatories to the EA
Multilateral Agreement for the recognition of calibration certificates

Accreditation No.: **SCS 108**

Glossary:

| | |
|--------------------------|---|
| TSL | tissue simulating liquid |
| NORM _{x,y,z} | sensitivity in free space |
| ConvF | sensitivity in TSL / NORM _{x,y,z} |
| DCP | diode compression point |
| CF | crest factor (1/duty_cycle) of the RF signal |
| A, B, C | modulation dependent linearization parameters |
| Polarization φ | φ rotation around probe axis |
| Polarization ϑ | ϑ rotation around an axis that is in the plane normal to probe axis (at measurement center), i.e., $\vartheta = 0$ is normal to probe axis |

Calibration is Performed According to the Following Standards:

- IEEE Std 1528-2003, "IEEE Recommended Practice for Determining the Peak Spatial-Averaged Specific Absorption Rate (SAR) in the Human Head from Wireless Communications Devices: Measurement Techniques", December 2003
- IEC 62209-1, "Procedure to measure the Specific Absorption Rate (SAR) for hand-held devices used in close proximity to the ear (frequency range of 300 MHz to 3 GHz)", February 2005

Methods Applied and Interpretation of Parameters:

- NORM_{x,y,z}**: Assessed for E-field polarization $\vartheta = 0$ ($f \leq 900$ MHz in TEM-cell; $f > 1800$ MHz: R22 waveguide). NORM_{x,y,z} are only intermediate values, i.e., the uncertainties of NORM_{x,y,z} does not affect the E²-field uncertainty inside TSL (see below ConvF).
- NORM(f)_{x,y,z} = NORM_{x,y,z} * frequency_response** (see Frequency Response Chart). This linearization is implemented in DASY4 software versions later than 4.2. The uncertainty of the frequency response is included in the stated uncertainty of ConvF.
- DCP_{x,y,z}**: DCP are numerical linearization parameters assessed based on the data of power sweep with CW signal (no uncertainty required). DCP does not depend on frequency nor media.
- PAR**: PAR is the Peak to Average Ratio that is not calibrated but determined based on the signal characteristics
- A_{x,y,z}; B_{x,y,z}; C_{x,y,z}; VR_{x,y,z}**: A, B, C are numerical linearization parameters assessed based on the data of power sweep for specific modulation signal. The parameters do not depend on frequency nor media. VR is the maximum calibration range expressed in RMS voltage across the diode.
- ConvF and Boundary Effect Parameters**: Assessed in flat phantom using E-field (or Temperature Transfer Standard for $f \leq 800$ MHz) and inside waveguide using analytical field distributions based on power measurements for $f > 800$ MHz. The same setups are used for assessment of the parameters applied for boundary compensation (alpha, depth) of which typical uncertainty values are given. These parameters are used in DASY4 software to improve probe accuracy close to the boundary. The sensitivity in TSL corresponds to NORM_{x,y,z} * ConvF whereby the uncertainty corresponds to that given for ConvF. A frequency dependent ConvF is used in DASY version 4.4 and higher which allows extending the validity from ± 50 MHz to ± 100 MHz.
- Spherical isotropy (3D deviation from isotropy)**: in a field of low gradients realized using a flat phantom exposed by a patch antenna.
- Sensor Offset**: The sensor offset corresponds to the offset of virtual measurement center from the probe tip (on probe axis). No tolerance required.

Probe EX3DV4

SN:3698

| | |
|---------------|----------------|
| Manufactured: | April 22, 2009 |
| Repaired: | July 19, 2012 |
| Calibrated: | July 27, 2012 |

Calibrated for DASY/EASY Systems
(Note: non-compatible with DASY2 system!)

DASY/EASY - Parameters of Probe: EX3DV4 - SN:3698

Basic Calibration Parameters

| | Sensor X | Sensor Y | Sensor Z | Unc (k=2) |
|---|----------|----------|----------|---------------|
| Norm ($\mu\text{V}/(\text{V}/\text{m})^2$) ^A | 0.41 | 0.35 | 0.37 | $\pm 10.1 \%$ |
| DCP (mV) ^B | 98.7 | 99.2 | 99.7 | |

Modulation Calibration Parameters

| UID | Communication System Name | PAR | | A dB | B dB | C dB | VR mV | Unc ^C (k=2) |
|-----|---------------------------|------|---|---------|---------|---------|----------|---------------------------|
| 0 | CW | 0.00 | X | 0.00 | 0.00 | 1.00 | 144.9 | $\pm 3.8 \%$ |
| | | | Y | 0.00 | 0.00 | 1.00 | 134.2 | |
| | | | Z | 0.00 | 0.00 | 1.00 | 135.7 | |

The reported uncertainty of measurement is stated as the standard uncertainty of measurement multiplied by the coverage factor $k=2$, which for a normal distribution corresponds to a coverage probability of approximately 95%.

^A The uncertainties of NormX,Y,Z do not affect the E^2 -field uncertainty inside TSL (see Pages 5 and 6).

^B Numerical linearization parameter: uncertainty not required.

^C Uncertainty is determined using the max. deviation from linear response applying rectangular distribution and is expressed for the square of the field value.

DASY/EASY - Parameters of Probe: EX3DV4 - SN:3698

Calibration Parameter Determined in Head Tissue Simulating Media

| f (MHz) ^C | Relative Permittivity ^F | Conductivity (S/m) ^F | ConvF X | ConvF Y | ConvF Z | Alpha | Depth (mm) | Unct. (k=2) |
|----------------------|------------------------------------|---------------------------------|---------|---------|---------|-------|------------|-------------|
| 750 | 41.9 | 0.89 | 8.99 | 8.99 | 8.99 | 0.58 | 0.70 | ± 12.0 % |
| 835 | 41.5 | 0.90 | 8.68 | 8.68 | 8.68 | 0.77 | 0.59 | ± 12.0 % |
| 900 | 41.5 | 0.97 | 8.54 | 8.54 | 8.54 | 0.58 | 0.69 | ± 12.0 % |
| 1750 | 40.1 | 1.37 | 7.64 | 7.64 | 7.64 | 0.80 | 0.59 | ± 12.0 % |
| 1900 | 40.0 | 1.40 | 7.43 | 7.43 | 7.43 | 0.34 | 0.88 | ± 12.0 % |
| 2450 | 39.2 | 1.80 | 6.61 | 6.61 | 6.61 | 0.42 | 0.82 | ± 12.0 % |
| 2600 | 39.0 | 1.96 | 6.41 | 6.41 | 6.41 | 0.31 | 0.98 | ± 12.0 % |
| 3500 | 37.9 | 2.91 | 6.58 | 6.58 | 6.58 | 0.45 | 0.97 | ± 13.1 % |
| 5200 | 36.0 | 4.66 | 4.68 | 4.68 | 4.68 | 0.40 | 1.80 | ± 13.1 % |
| 5300 | 35.9 | 4.76 | 4.51 | 4.51 | 4.51 | 0.40 | 1.80 | ± 13.1 % |
| 5500 | 35.6 | 4.96 | 4.49 | 4.49 | 4.49 | 0.40 | 1.80 | ± 13.1 % |
| 5600 | 35.5 | 5.07 | 4.19 | 4.19 | 4.19 | 0.45 | 1.80 | ± 13.1 % |
| 5800 | 35.3 | 5.27 | 4.28 | 4.28 | 4.28 | 0.45 | 1.80 | ± 13.1 % |

^C Frequency validity of ± 100 MHz only applies for DASY v4.4 and higher (see Page 2), else it is restricted to ± 50 MHz. The uncertainty is the RSS of the ConvF uncertainty at calibration frequency and the uncertainty for the indicated frequency band.

^F At frequencies below 3 GHz, the validity of tissue parameters (ϵ and σ) can be relaxed to ± 10% if liquid compensation formula is applied to measured SAR values. At frequencies above 3 GHz, the validity of tissue parameters (ϵ and σ) is restricted to ± 5%. The uncertainty is the RSS of the ConvF uncertainty for indicated target tissue parameters.

DASY/EASY - Parameters of Probe: EX3DV4 - SN:3698

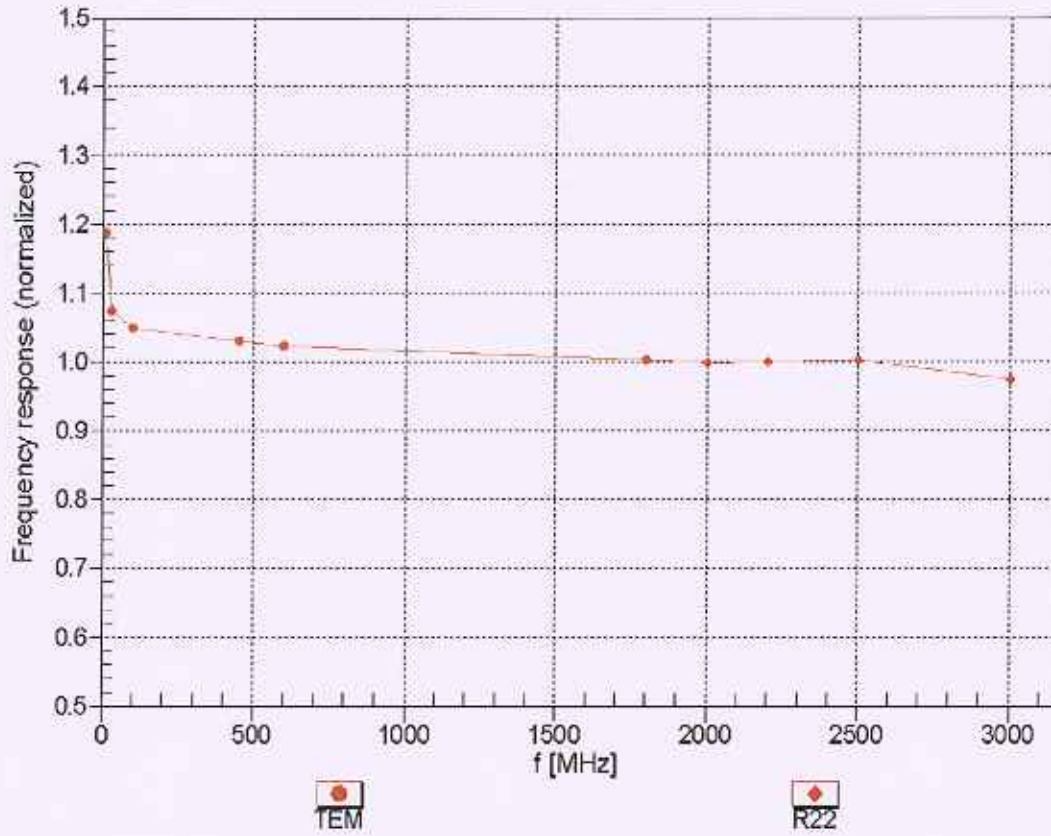
Calibration Parameter Determined in Body Tissue Simulating Media

| f (MHz) ^C | Relative Permittivity ^F | Conductivity (S/m) ^F | ConvF X | ConvF Y | ConvF Z | Alpha | Depth (mm) | Unct. (k=2) |
|----------------------|------------------------------------|---------------------------------|---------|---------|---------|-------|------------|-------------|
| 750 | 55.5 | 0.96 | 8.79 | 8.79 | 8.79 | 0.52 | 0.79 | ± 12.0 % |
| 835 | 55.2 | 0.97 | 8.71 | 8.71 | 8.71 | 0.41 | 0.87 | ± 12.0 % |
| 900 | 55.0 | 1.05 | 8.59 | 8.59 | 8.59 | 0.41 | 0.87 | ± 12.0 % |
| 1750 | 53.4 | 1.49 | 7.26 | 7.26 | 7.26 | 0.42 | 0.84 | ± 12.0 % |
| 1900 | 53.3 | 1.52 | 7.00 | 7.00 | 7.00 | 0.49 | 0.76 | ± 12.0 % |
| 2450 | 52.7 | 1.95 | 6.68 | 6.68 | 6.68 | 0.80 | 0.57 | ± 12.0 % |
| 2600 | 52.5 | 2.16 | 6.53 | 6.53 | 6.53 | 0.80 | 0.50 | ± 12.0 % |
| 3500 | 51.3 | 3.31 | 6.03 | 6.03 | 6.03 | 0.55 | 0.92 | ± 13.1 % |
| 5200 | 49.0 | 5.30 | 4.20 | 4.20 | 4.20 | 0.50 | 1.80 | ± 13.1 % |
| 5300 | 48.9 | 5.42 | 4.02 | 4.02 | 4.02 | 0.50 | 1.80 | ± 13.1 % |
| 5500 | 48.6 | 5.65 | 3.76 | 3.76 | 3.76 | 0.55 | 1.80 | ± 13.1 % |
| 5600 | 48.5 | 5.77 | 3.72 | 3.72 | 3.72 | 0.50 | 1.80 | ± 13.1 % |
| 5800 | 48.2 | 6.00 | 3.86 | 3.86 | 3.86 | 0.60 | 1.80 | ± 13.1 % |

^C Frequency validity of ± 100 MHz only applies for DASY v4.4 and higher (see Page 2), else it is restricted to ± 50 MHz. The uncertainty is the RSS of the ConvF uncertainty at calibration frequency and the uncertainty for the indicated frequency band.

^F At frequencies below 3 GHz, the validity of tissue parameters (ϵ and σ) can be relaxed to ± 10% if liquid compensation formula is applied to measured SAR values. At frequencies above 3 GHz, the validity of tissue parameters (ϵ and σ) is restricted to ± 5%. The uncertainty is the RSS of the ConvF uncertainty for indicated target tissue parameters.

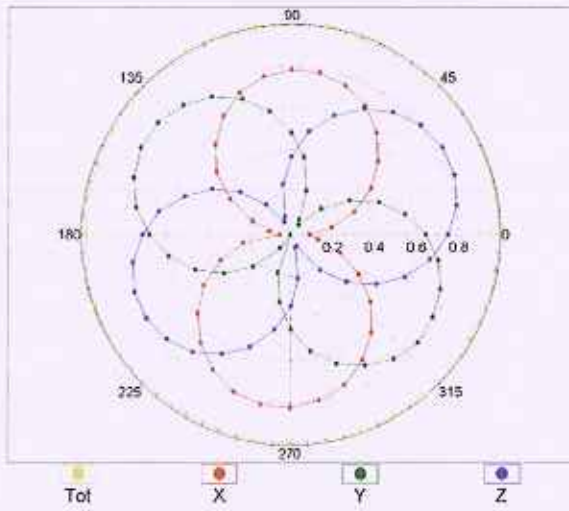
Frequency Response of E-Field (TEM-Cell:ifi110 EXX, Waveguide: R22)



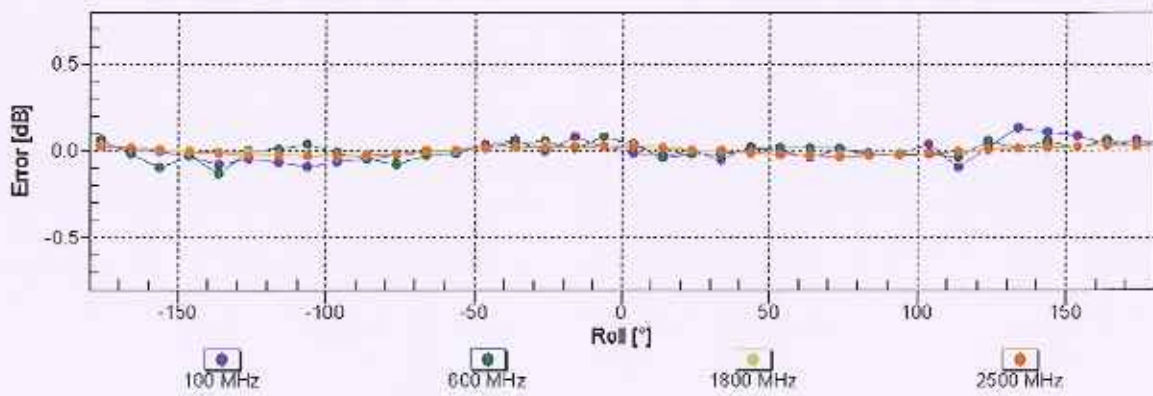
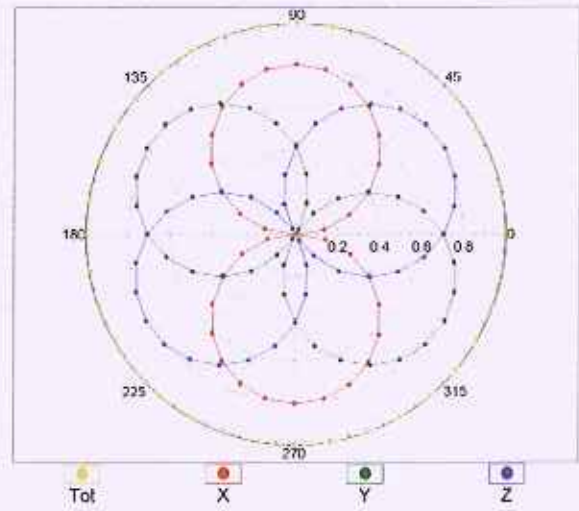
Uncertainty of Frequency Response of E-field: $\pm 6.3\%$ (k=2)

Receiving Pattern (ϕ), $\theta = 0^\circ$

f=600 MHz,TEM

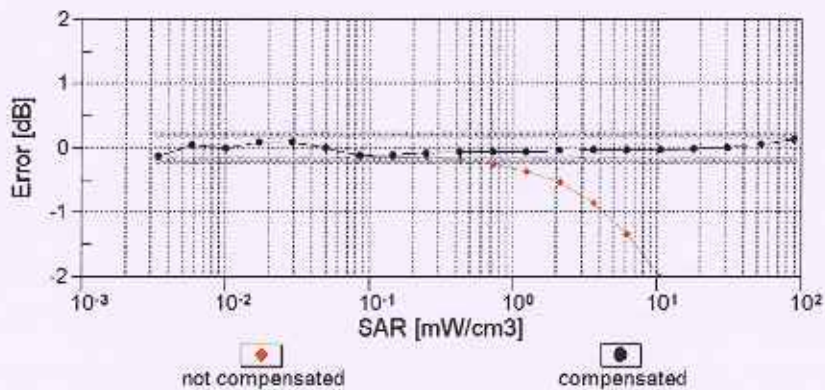
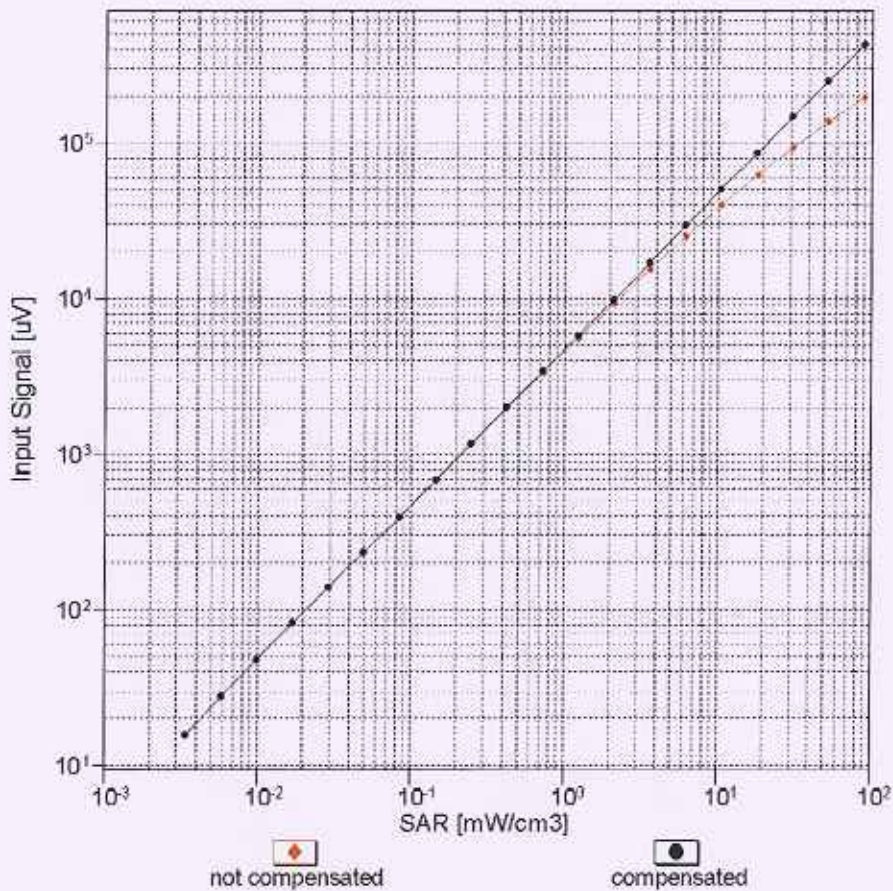


f=1800 MHz,R22



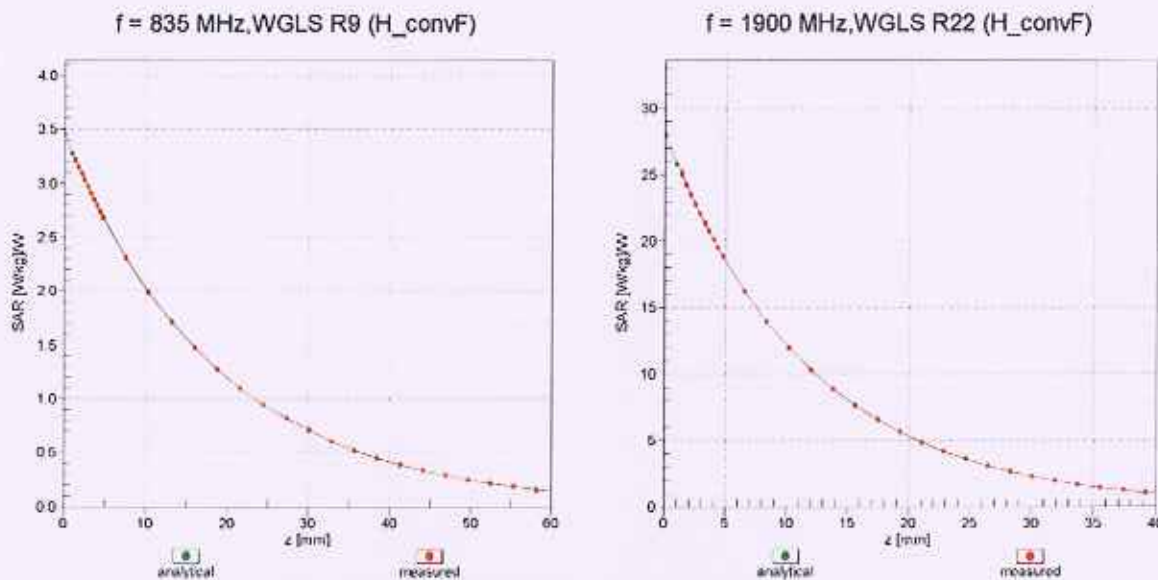
Uncertainty of Axial Isotropy Assessment: $\pm 0.5\%$ ($k=2$)

Dynamic Range $f(SAR_{head})$ (TEM cell , $f = 900$ MHz)



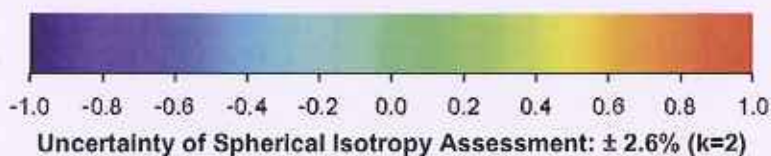
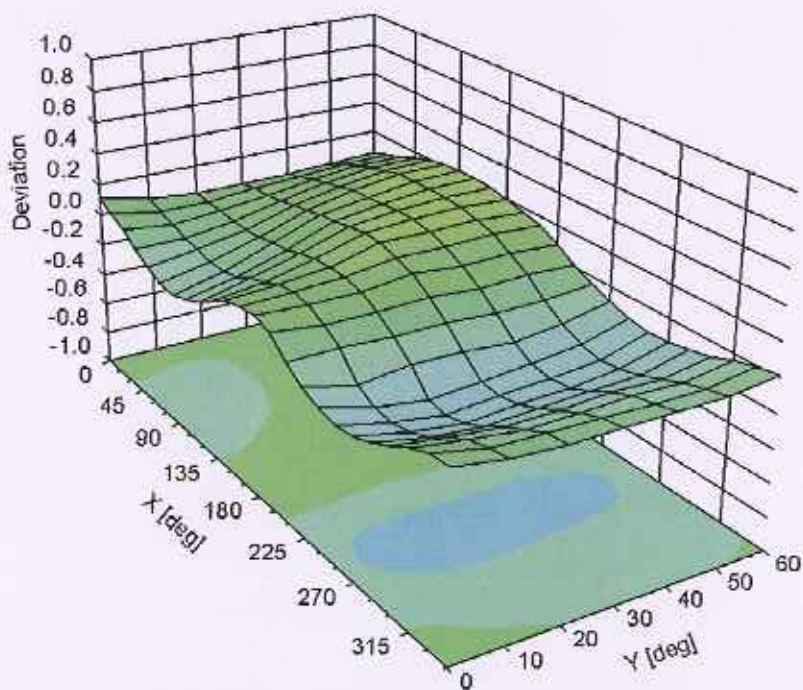
Uncertainty of Linearity Assessment: $\pm 0.6\%$ (k=2)

Conversion Factor Assessment



Deviation from Isotropy in Liquid

Error (ϕ, θ), f = 900 MHz



Uncertainty of Spherical Isotropy Assessment: $\pm 2.6\%$ (k=2)

DASY/EASY - Parameters of Probe: EX3DV4 - SN:3698**Other Probe Parameters**

| | |
|---|------------|
| Sensor Arrangement | Triangular |
| Connector Angle (°) | 43.7 |
| Mechanical Surface Detection Mode | enabled |
| Optical Surface Detection Mode | disabled |
| Probe Overall Length | 337 mm |
| Probe Body Diameter | 10 mm |
| Tip Length | 9 mm |
| Tip Diameter | 2.5 mm |
| Probe Tip to Sensor X Calibration Point | 1 mm |
| Probe Tip to Sensor Y Calibration Point | 1 mm |
| Probe Tip to Sensor Z Calibration Point | 1 mm |
| Recommended Measurement Distance from Surface | 2 mm |



Appendix E. Dipole Calibration

Validation Dipole 2450 MHz

M/N: ALS-D-2450

S/N: QTK-319

Calibration Laboratory of
Schmid & Partner
Engineering AG
Zeughausstrasse 43, 8004 Zurich, Switzerland



S Schweizerischer Kalibrierdienst
C Service suisse d'étalonnage
S Servizio svizzero di taratura
S Swiss Calibration Service

Accredited by the Swiss Accreditation Service (SAS)
The Swiss Accreditation Service is one of the signatories to the EA
Multilateral Agreement for the recognition of calibration certificates

Accreditation No.: SCS 108

Client **Quietek (Auden)**

Certificate No: ALS-2450-QTK-319_Nov12

CALIBRATION CERTIFICATE

Object **ALS-D-2450 - SN: QTK-319**

Calibration procedure(s) **QA CAL-05.v8
Calibration procedure for dipole validation kits above 700 MHz**

Calibration date: **November 20, 2012**

This calibration certificate documents the traceability to national standards, which realize the physical units of measurements (SI).
The measurements and the uncertainties with confidence probability are given on the following pages and are part of the certificate.

All calibrations have been conducted in the closed laboratory facility: environment temperature (22 ± 3)°C and humidity < 70%.

Calibration Equipment used (M&TE critical for calibration)

| Primary Standards | ID # | Cal Date (Certificate No.) | Scheduled Calibration |
|-----------------------------|--------------------|--------------------------------|-----------------------|
| Power meter EPM-442A | GB37480704 | 01-Nov-12 (No. 217-01640) | Oct-13 |
| Power sensor HP 8481A | US37292783 | 01-Nov-12 (No. 217-01640) | Oct-13 |
| Reference 20 dB Attenuator | SN: 5058 (20k) | 27-Mar-12 (No. 217-01530) | Apr-13 |
| Type-N mismatch combination | SN: 5047.2 / 06327 | 27-Mar-12 (No. 217-01533) | Apr-13 |
| Reference Probe ES3DV3 | SN: 3205 | 30-Dec-11 (No. ES3-3205_Dec11) | Dec-12 |
| DAE4 | SN: 601 | 27-Jun-12 (No. DAE4-601_Jun12) | Jun-13 |

| Secondary Standards | ID # | Check Date (in house) | Scheduled Check |
|---------------------------|------------------|-----------------------------------|------------------------|
| Power sensor HP 8481A | MY41092317 | 18-Oct-02 (in house check Oct-11) | In house check: Oct-13 |
| RF generator R&S SMT-06 | 100005 | 04-Aug-99 (in house check Oct-11) | In house check: Oct-13 |
| Network Analyzer HP 8753E | US37390585 S4206 | 18-Oct-01 (in house check Oct-12) | In house check: Oct-13 |

| | | | |
|----------------|------------------------------|--|---------------|
| Calibrated by: | Name Leif Klysner | Function Laboratory Technician | Signature |
| Approved by: | Name Katja Pokovic | Technical Manager | |

Issued: November 21, 2012

This calibration certificate shall not be reproduced except in full without written approval of the laboratory.



Accredited by the Swiss Accreditation Service (SAS)
The Swiss Accreditation Service is one of the signatories to the EA
Multilateral Agreement for the recognition of calibration certificates

Accreditation No.: **SCS 108**

Glossary:

| | |
|-------|---------------------------------|
| TSL | tissue simulating liquid |
| ConvF | sensitivity in TSL / NORM x,y,z |
| N/A | not applicable or not measured |

Calibration is Performed According to the Following Standards:

- IEEE Std 1528-2003, "IEEE Recommended Practice for Determining the Peak Spatial-Averaged Specific Absorption Rate (SAR) in the Human Head from Wireless Communications Devices: Measurement Techniques", December 2003
- IEC 62209-1, "Procedure to measure the Specific Absorption Rate (SAR) for hand-held devices used in close proximity to the ear (frequency range of 300 MHz to 3 GHz)", February 2005
- Federal Communications Commission Office of Engineering & Technology (FCC OET), "Evaluating Compliance with FCC Guidelines for Human Exposure to Radiofrequency Electromagnetic Fields; Additional Information for Evaluating Compliance of Mobile and Portable Devices with FCC Limits for Human Exposure to Radiofrequency Emissions", Supplement C (Edition 01-01) to Bulletin 65

Additional Documentation:

- DASY4/5 System Handbook

Methods Applied and Interpretation of Parameters:

- Measurement Conditions:** Further details are available from the Validation Report at the end of the certificate. All figures stated in the certificate are valid at the frequency indicated.
- Antenna Parameters with TSL:** The dipole is mounted with the spacer to position its feed point exactly below the center marking of the flat phantom section, with the arms oriented parallel to the body axis.
- Feed Point Impedance and Return Loss:** These parameters are measured with the dipole positioned under the liquid filled phantom. The impedance stated is transformed from the measurement at the SMA connector to the feed point. The Return Loss ensures low reflected power. No uncertainty required.
- Electrical Delay:** One-way delay between the SMA connector and the antenna feed point. No uncertainty required.
- SAR measured:** SAR measured at the stated antenna input power.
- SAR normalized:** SAR as measured, normalized to an input power of 1 W at the antenna connector.
- SAR for nominal TSL parameters:** The measured TSL parameters are used to calculate the nominal SAR result.

The reported uncertainty of measurement is stated as the standard uncertainty of measurement multiplied by the coverage factor $k=2$, which for a normal distribution corresponds to a coverage probability of approximately 95%.

Measurement Conditions

DASY system configuration, as far as not given on page 1.

| | | |
|------------------------------|------------------------|-------------|
| DASY Version | DASY5 | V52.8.3 |
| Extrapolation | Advanced Extrapolation | |
| Phantom | Modular Flat Phantom | |
| Distance Dipole Center - TSL | 10 mm | with Spacer |
| Zoom Scan Resolution | dx, dy, dz = 5 mm | |
| Frequency | 2450 MHz \pm 1 MHz | |

Head TSL parameters

The following parameters and calculations were applied.

| | Temperature | Permittivity | Conductivity |
|---|---------------------|----------------|----------------------|
| Nominal Head TSL parameters | 22.0 °C | 39.2 | 1.80 mho/m |
| Measured Head TSL parameters | (22.0 \pm 0.2) °C | 38.7 \pm 6 % | 1.85 mho/m \pm 6 % |
| Head TSL temperature change during test | < 0.5 °C | ---- | ---- |

SAR result with Head TSL

| SAR averaged over 1 cm ³ (1 g) of Head TSL | Condition | |
|---|--------------------|--|
| SAR measured | 250 mW input power | 14.3 W/kg |
| SAR for nominal Head TSL parameters | normalized to 1W | 56.3 W/kg \pm 17.0 % (k=2) |

| SAR averaged over 10 cm ³ (10 g) of Head TSL | condition | |
|---|--------------------|--|
| SAR measured | 250 mW input power | 6.63 W/kg |
| SAR for nominal Head TSL parameters | normalized to 1W | 26.3 W/kg \pm 16.5 % (k=2) |

Body TSL parameters

The following parameters and calculations were applied.

| | Temperature | Permittivity | Conductivity |
|---|---------------------|----------------|----------------------|
| Nominal Body TSL parameters | 22.0 °C | 52.7 | 1.95 mho/m |
| Measured Body TSL parameters | (22.0 \pm 0.2) °C | 51.2 \pm 6 % | 2.01 mho/m \pm 6 % |
| Body TSL temperature change during test | < 0.5 °C | ---- | ---- |

SAR result with Body TSL

| SAR averaged over 1 cm ³ (1 g) of Body TSL | Condition | |
|---|--------------------|--|
| SAR measured | 250 mW input power | 13.5 W/kg |
| SAR for nominal Body TSL parameters | normalized to 1W | 52.9 W/kg \pm 17.0 % (k=2) |

| SAR averaged over 10 cm ³ (10 g) of Body TSL | condition | |
|---|--------------------|--|
| SAR measured | 250 mW input power | 6.24 W/kg |
| SAR for nominal Body TSL parameters | normalized to 1W | 24.7 W/kg \pm 16.5 % (k=2) |

Appendix

Antenna Parameters with Head TSL

| | |
|--------------------------------------|--------------------------------|
| Impedance, transformed to feed point | 56.7 Ω - 0.9 j Ω |
| Return Loss | - 24.0 dB |

Antenna Parameters with Body TSL

| | |
|--------------------------------------|--------------------------------|
| Impedance, transformed to feed point | 53.2 Ω + 1.5 j Ω |
| Return Loss | - 29.3 dB |

General Antenna Parameters and Design

| | |
|----------------------------------|----------|
| Electrical Delay (one direction) | 1.018 ns |
|----------------------------------|----------|

After long term use with 100W radiated power, only a slight warming of the dipole near the feedpoint can be measured.

The dipole is made of standard semirigid coaxial cable. The center conductor of the feeding line is directly connected to the second arm of the dipole. The antenna is therefore short-circuited for DC-signals. On some of the dipoles, small end caps are added to the dipole arms in order to improve matching when loaded according to the position as explained in the "Measurement Conditions" paragraph. The SAR data are not affected by this change. The overall dipole length is still according to the Standard.

No excessive force must be applied to the dipole arms, because they might bend or the soldered connections near the feedpoint may be damaged.

Additional EUT Data

| | |
|-----------------|---------------|
| Manufactured by | APREL |
| Manufactured on | Not available |

Special Note

The deviation in SAR averaged results towards the latest certificate of the same dipole is higher than expected (higher than typical repeatability deviation for SAR validation dipoles). The reason is unknown, but it may be linked with the dipole repair that took place in between the two calibrations conducted in the SCS108 laboratory.

DASY5 Validation Report for Head TSL

Date: 20.11.2012

Test Laboratory: SPEAG, Zurich, Switzerland

DUT: Dipole 2450 MHz; Type: ALS-D-2450-S-2; Serial: SN: QTK-319

Communication System: CW; Frequency: 2450 MHz

Medium parameters used: $f = 2450$ MHz; $\sigma = 1.85$ mho/m; $\epsilon_r = 38.7$; $\rho = 1000$ kg/m³

Phantom section: Flat Section

Measurement Standard: DASY5 (IEEE/IEC/ANSI C63.19-2007)

DASY52 Configuration:

- Probe: ES3DV3 - SN3205; ConvF(4.45, 4.45, 4.45); Calibrated: 30.12.2011;
- Sensor-Surface: 3mm (Mechanical Surface Detection)
- Electronics: DAE4 Sn601; Calibrated: 27.06.2012
- Phantom: Flat Phantom 5.0 (front); Type: QD000P50AA; Serial: 1001
- DASY52 52.8.3(988); SEMCAD X 14.6.7(6848)

Dipole Calibration for Head Tissue/Pin=250 mW, d=10mm/Zoom Scan (7x7x7)/Cube 0:

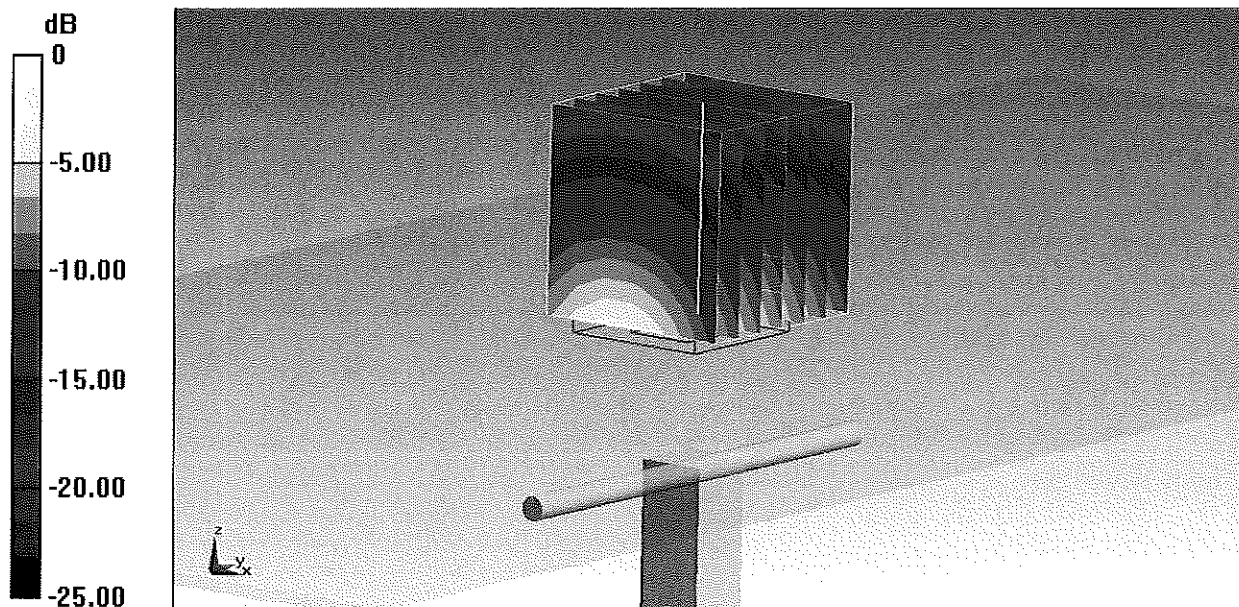
Measurement grid: dx=5mm, dy=5mm, dz=5mm

Reference Value = 102.6 V/m; Power Drift = 0.00 dB

Peak SAR (extrapolated) = 29.5 W/kg

SAR(1 g) = 14.3 W/kg; SAR(10 g) = 6.63 W/kg

Maximum value of SAR (measured) = 18.2 W/kg



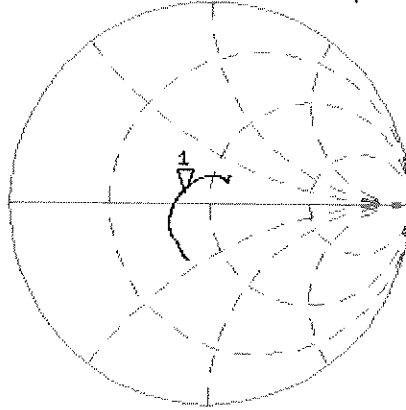
0 dB = 18.2 W/kg = 12.60 dBW/kg

Impedance Measurement Plot for Head TSL

20 Nov 2012 14:30:41

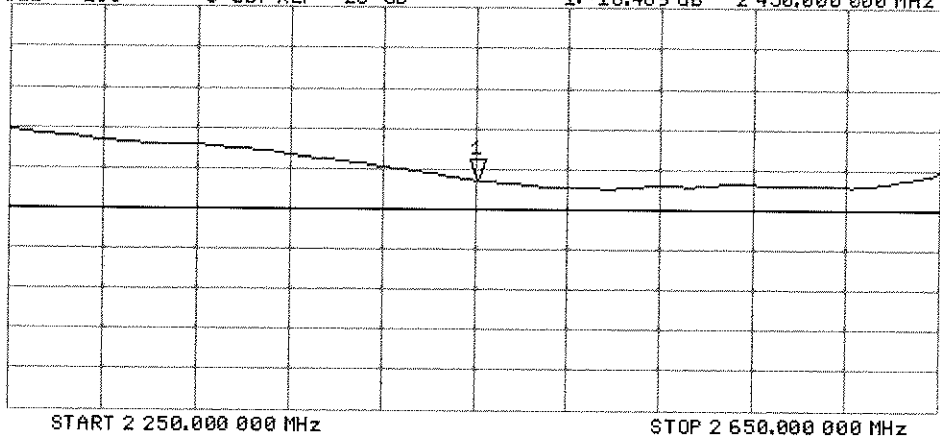
CH1 S11 1 U FS 1: 37.553 Ω 4.2793 Ω 277.99 μH 2 450.000 000 MHz

*
Del
CA
Avg
16
H1d



CH2 S11 LOG 5 dB/REF -20 dB 1:-16.469 dB 2 450.000 000 MHz

CA
Avg
16
H1d



DASY5 Validation Report for Body TSL

Date: 20.11.2012

Test Laboratory: SPEAG, Zurich, Switzerland

DUT: Dipole 2450 MHz; Type: ALS-D-2450-S-2; Serial: SN: QTK-319

Communication System: CW; Frequency: 2450 MHz

Medium parameters used: $f = 2450$ MHz; $\sigma = 2.01$ mho/m; $\epsilon_r = 51.2$; $\rho = 1000$ kg/m³

Phantom section: Flat Section

Measurement Standard: DASY5 (IEEE/IEC/ANSI C63.19-2007)

DASY52 Configuration:

- Probe: ES3DV3 - SN3205; ConvF(4.26, 4.26, 4.26); Calibrated: 30.12.2011;
- Sensor-Surface: 3mm (Mechanical Surface Detection)
- Electronics: DAE4 Sn601; Calibrated: 27.06.2012
- Phantom: Flat Phantom 5.0 (back); Type: QD000P50AA; Serial: 1002
- DASY52 52.8.3(988); SEMCAD X 14.6.7(6848)

Dipole Calibration for Body Tissue/Pin=250 mW, d=10mm/Zoom Scan (7x8x7)/Cube 0:

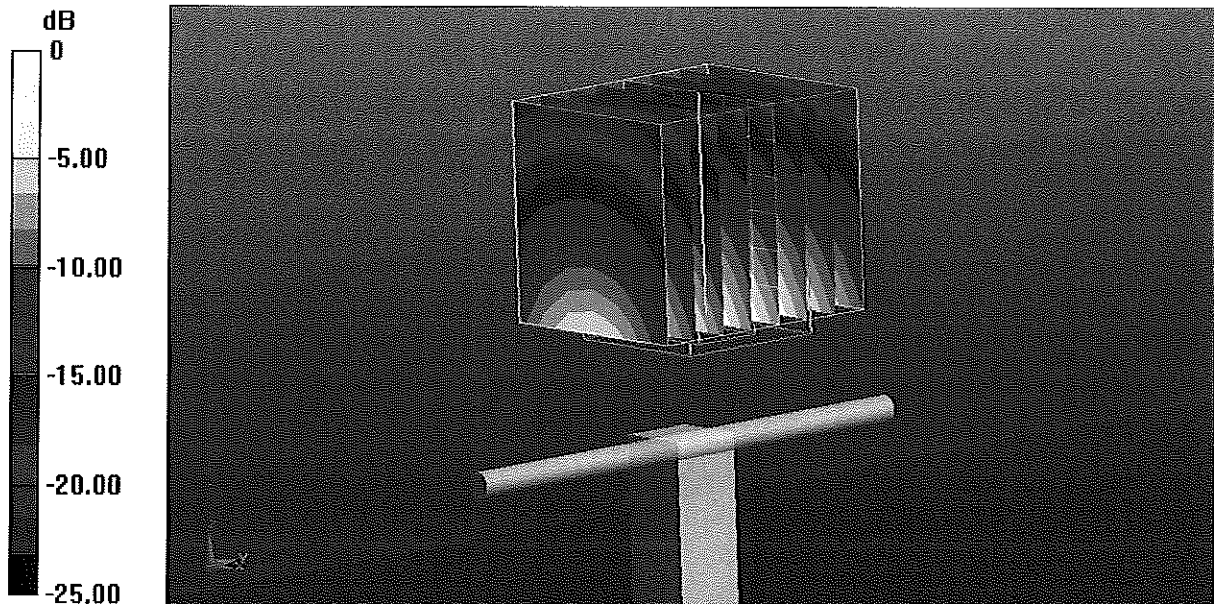
Measurement grid: dx=5mm, dy=5mm, dz=5mm

Reference Value = 94.392 V/m; Power Drift = 0.00 dB

Peak SAR (extrapolated) = 27.9 W/kg

SAR(1 g) = 13.5 W/kg; SAR(10 g) = 6.24 W/kg

Maximum value of SAR (measured) = 17.8 W/kg

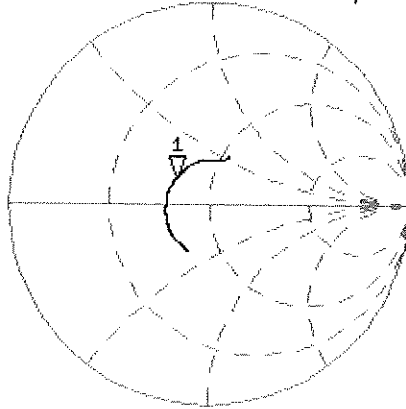


0 dB = 17.8 W/kg = 12.50 dBW/kg

Impedance Measurement Plot for Body TSL

20 Nov 2012 09:55:15
[CH1] S11 1 U FS 1: 34.504 Ω 8.8320 Ω 573.74 pF 2 450.000 000 MHz

*
De1
Cor

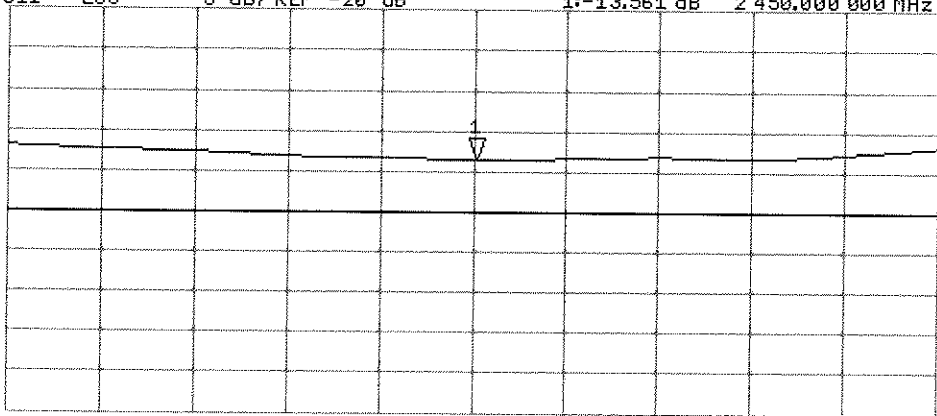


Avg
16

H1d

CH2 S11 LOG 5 dB/REF -20 dB 1: -13.561 dB 2 450.000 000 MHz

Cor



Avg
16

H1d

START 2 250.000 000 MHz

STOP 2 650.000 000 MHz