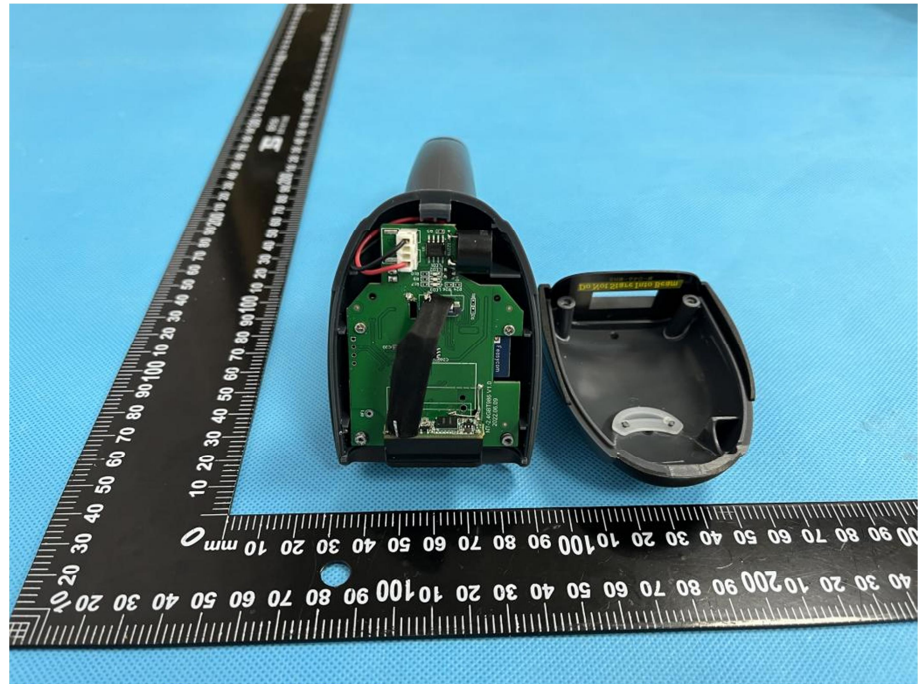
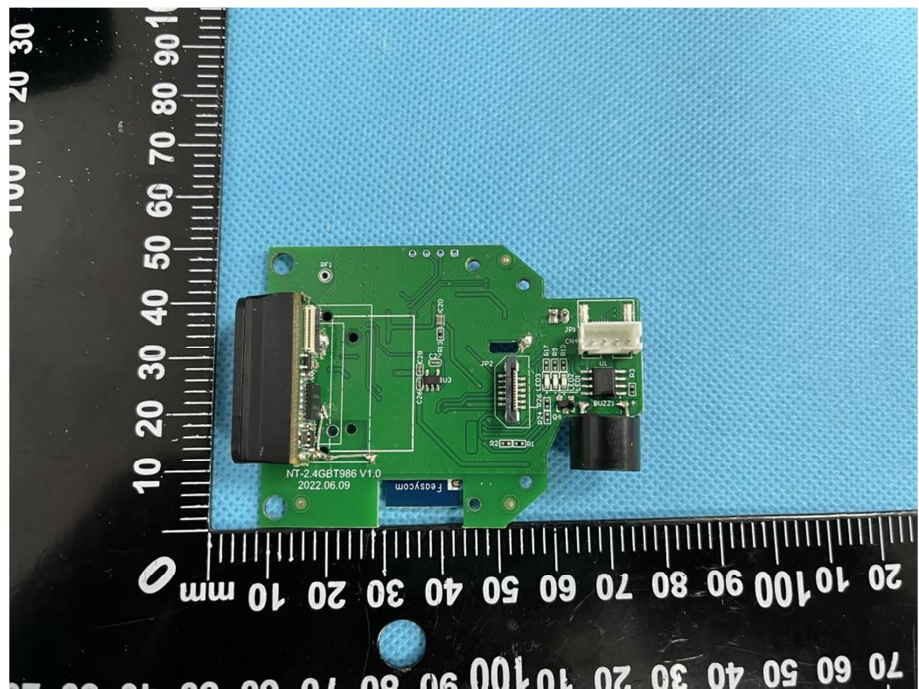


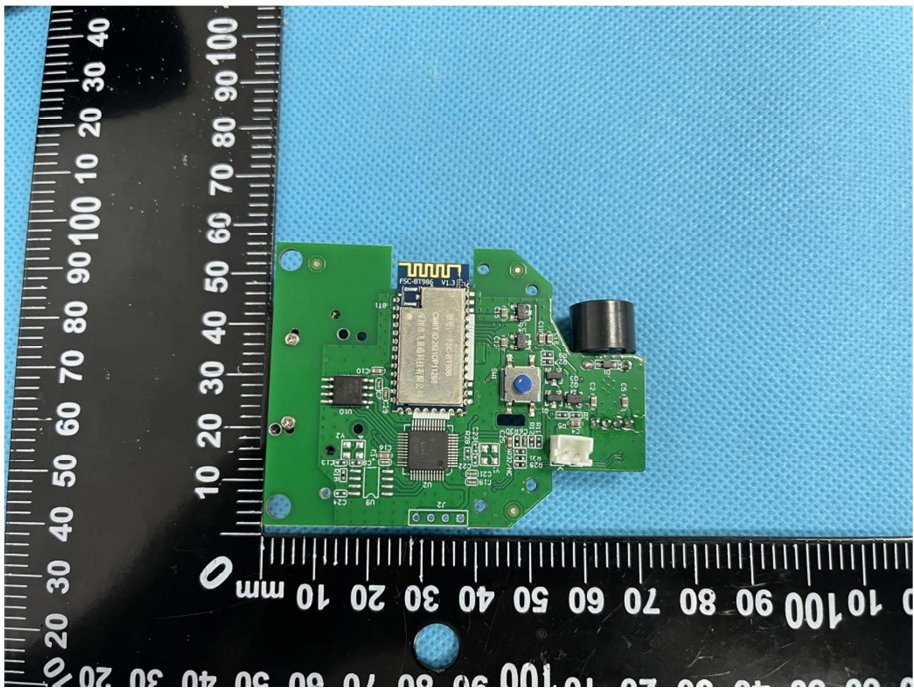
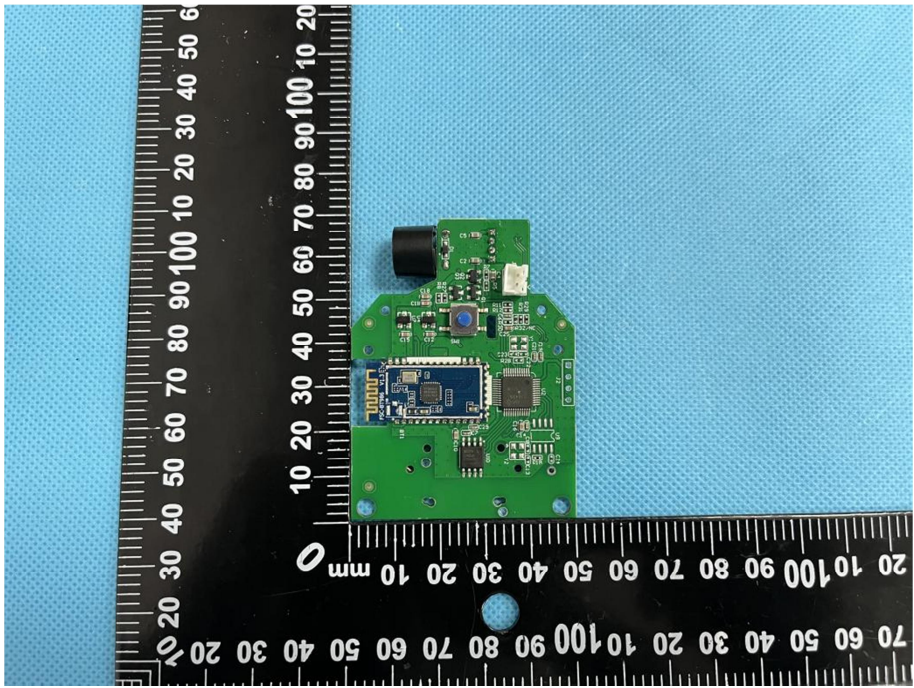
EXHIBIT 3 - EUT INTERNAL PHOTOGRAPHS

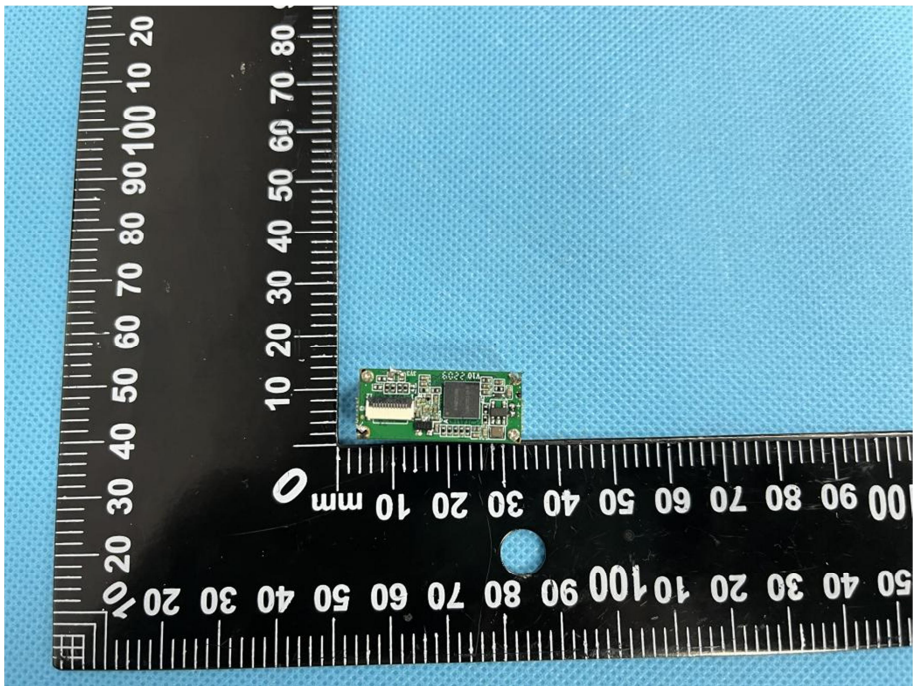
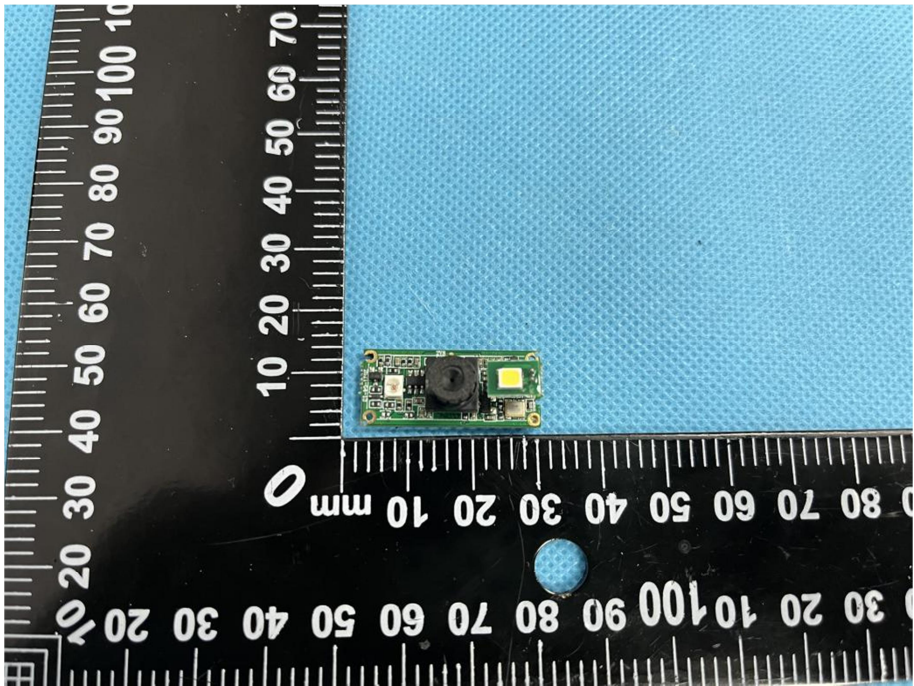
EUT Housing and Board View 1

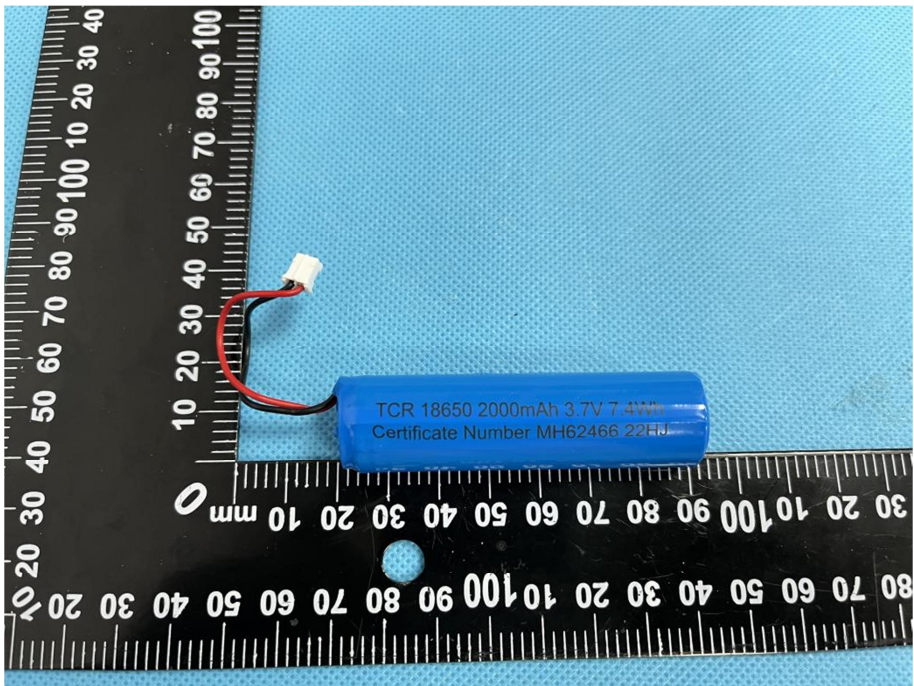
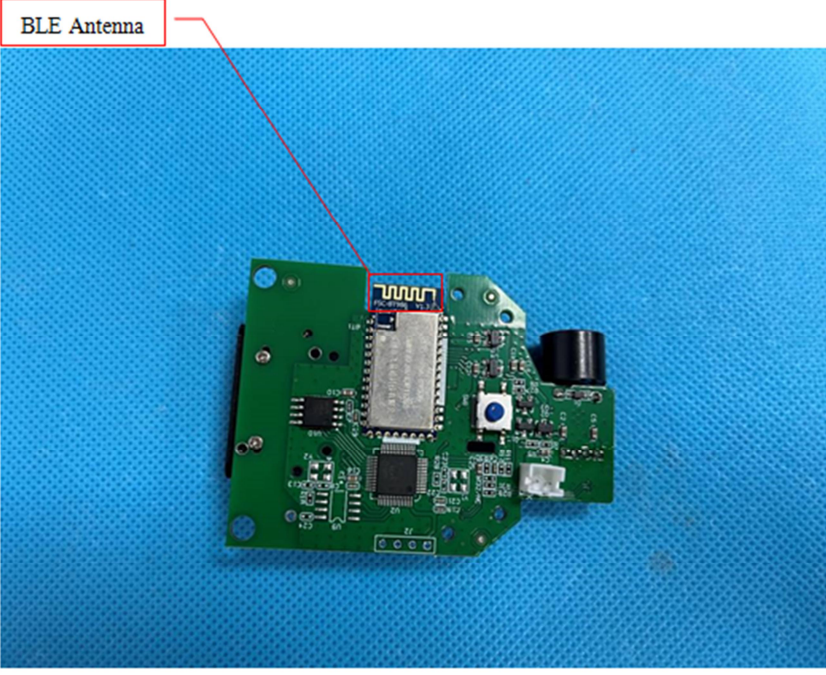


Solder Board-Component View 1



| | |
|---|--|
| <p>Solder Board-Component View 2</p> |  A photograph of a green printed circuit board (PCB) component, labeled 'View 2'. The board is rectangular with a complex layout of components, including a large central chip, several smaller surface-mount components, and a black cylindrical component on the right side. The board is placed on a blue textured surface. A black ruler with white markings is positioned vertically to the left of the board, showing measurements in millimeters from 0 to 100. The board's length is approximately 100 mm, and its width is approximately 60 mm. |
| <p>Solder Board-Component View 3</p> |  A photograph of the same green PCB component, labeled 'View 3'. This view shows the board from a different angle, highlighting the black cylindrical component and the central chip. The board is placed on the same blue textured surface. A black ruler with white markings is positioned vertically to the left of the board, showing measurements in millimeters from 0 to 100. The board's length is approximately 100 mm, and its width is approximately 60 mm. |

| | |
|---|--|
| <p>Solder Board-Component View 4</p> |  A photograph showing a small green printed circuit board (PCB) component, likely a solder board, placed on a blue textured surface. The component is positioned next to a black ruler with white markings. The ruler shows measurements in millimeters, with the component's length being approximately 20 mm. The component has several small components and a larger integrated circuit (IC) mounted on it. |
| <p>Solder Board-Component View 5</p> |  A photograph showing the same small green PCB component from a different perspective. The component is placed on the same blue textured surface next to the same black ruler. The ruler shows measurements in millimeters, with the component's length being approximately 20 mm. This view highlights a different side of the component, showing a different arrangement of components and a larger IC. |

| | |
|---|---|
| <p>Solder Board-Component View 6</p> |  |
| <p>Antenna View</p> |  |